

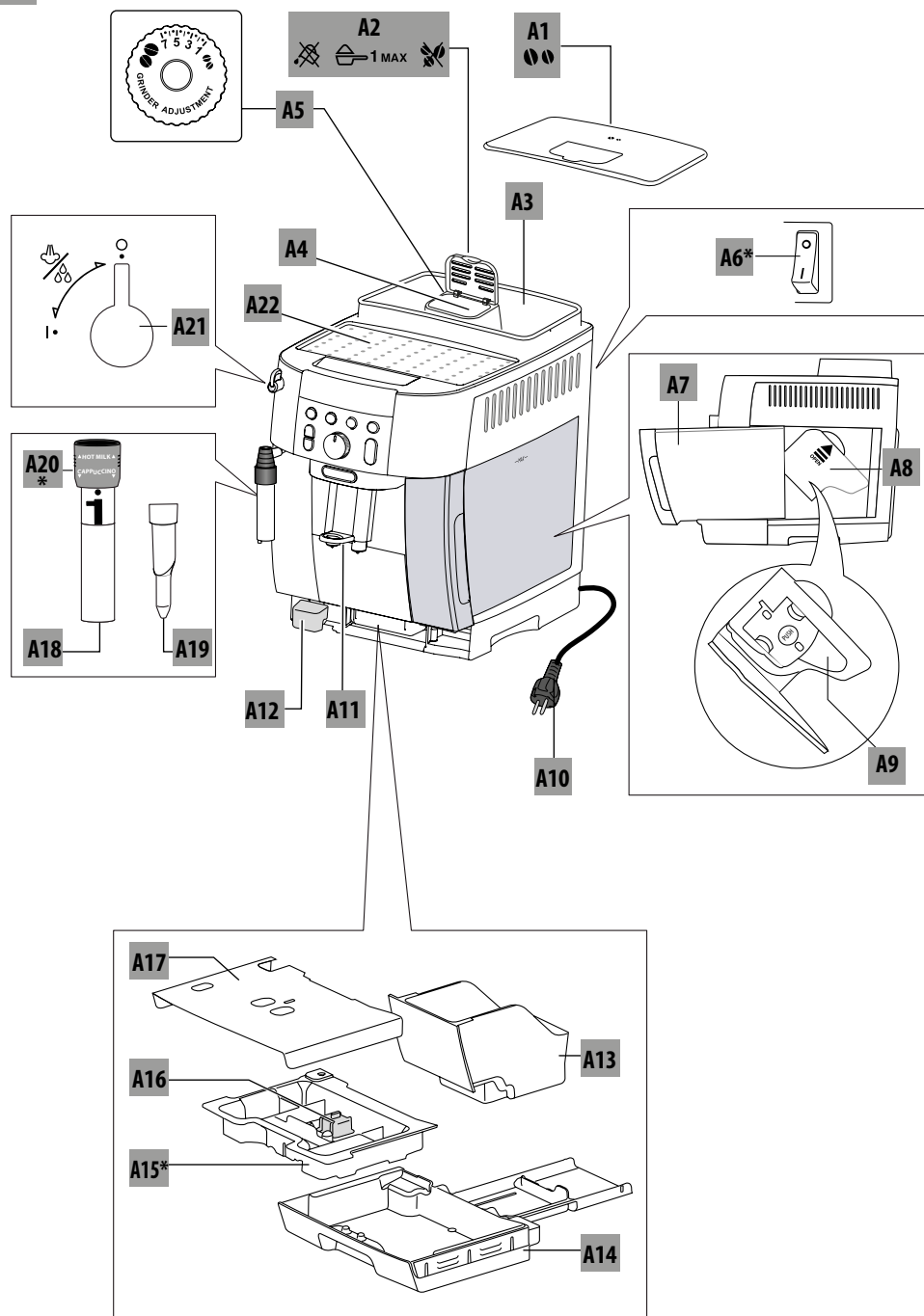
ECAM23X.1Y - ECAM25X.2Y - ECAM25X.3Y - ECAM25X.4Y - FEB25XY

BEAN TO CUP ESPRESSO AND
CAPPUCCINO MACHINE
Instructions for Use

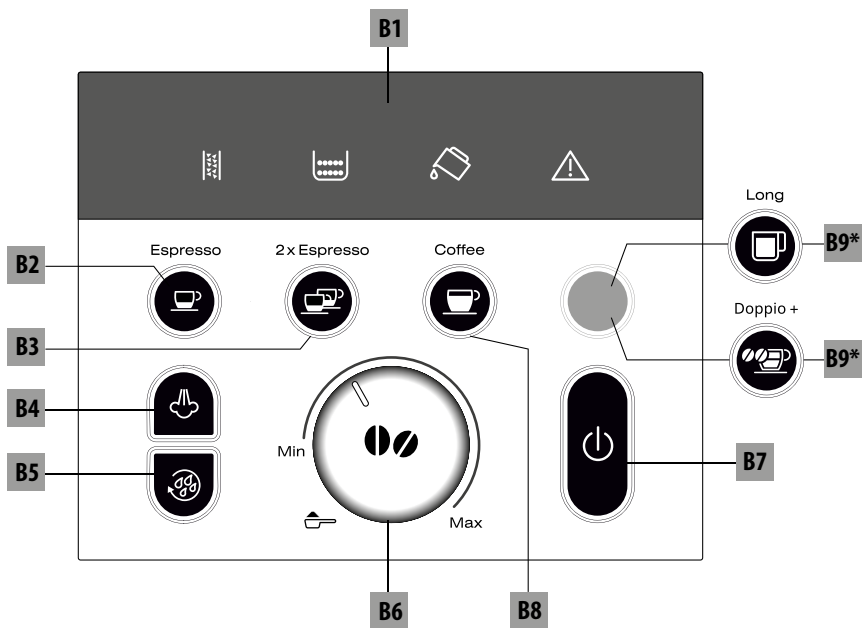


De'Longhi

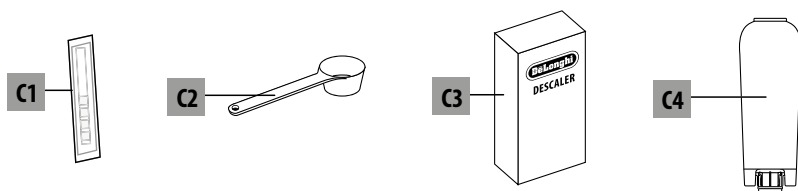
A



B



C



CONTENTS

1. INTRODUCTION.....	5	18. SETTING WATER HARDNESS	16
1.1 Letters in brackets	5	18.1 Measuring water hardness	16
1.2 Troubleshooting and repairs.....	5	18.2 Setting water hardness	16
2. DESCRIPTION.....	5	19. TECHNICAL DATA.....	16
2.1 Description of the appliance	5	20. EXPLANATION OF LIGHTS.....	17
2.2 Description of the control panel	5	21. TROUBLESHOOTING	18
2.3 Description of the accessories.....	5		
2.4 Description of lights	5		
3. SETTING UP THE APPLIANCE	5		
4. TURNING THE APPLIANCE ON.....	6		
5. TURNING THE APPLIANCE OFF	7		
6. SETTING WATER HARDNESS	7		
7. AUTO-OFF	7		
8. ENERGY SAVING.....	7		
9. SETTING THE TEMPERATURE	7		
10. WATER SOFTENER FILTER	7		
10.1 Installing the filter	8		
10.2 Removal and replacement of the water softener filter	8		
11. RINSING.....	8		
12. MAKING COFFEE USING COFFEE BEANS	9		
12.1 Selecting the coffee taste	9		
12.2 Adjusting the coffee mill	9		
12.3 Tips for a hotter coffee.....	9		
12.4 Coffee delivery	9		
13. MAKING COFFEE USING PRE-GROUND COFFEE ..	10		
13.1 Selecting the quantity in the cup	11		
14. MAKING CAPPUCCINO	11		
14.1 Cleaning the cappuccino maker after use....	11		
15. DELIVERING HOT WATER	12		
16. CLEANING	12		
16.1 Cleaning the machine	12		
16.2 Cleaning the internal circuit	12		
16.3 Cleaning the coffee grounds container.....	12		
16.4 Cleaning the drip tray and condensate tray.	13		
16.5 Cleaning the inside of the machine	13		
16.6 Cleaning the water tank	13		
16.7 Cleaning the coffee spouts	13		
16.8 Cleaning the pre-ground coffee funnel	14		
16.9 Cleaning the infuser	14		
17. DESCALING.....	14		

Before using the appliance, always read the safety warnings.

1. INTRODUCTION

Thank you for choosing this bean to cup espresso and cappuccino machine.

We hope you enjoy using your new appliance. Take a few minutes to read this Instruction for Use. This will avoid all risks and damage to the appliance.

1.1 Letters in brackets

The letters in brackets refer to the legend in the description of the appliance on pages 2-3.

1.2 Troubleshooting and repairs

In the event of problems, first try and resolve them by reading the information given in sections "20. Explanation of lights" and "21. Troubleshooting".

If this does not resolve the problem or you require further information, you should consult customer services by calling the number given on the annexed "Customer Service" sheet.

If your country is not among those listed on the sheet, call the number given in the guarantee. If repairs are required, contact De'Longhi customer services only. The addresses are given in the guarantee certificate provided with the machine.

2. DESCRIPTION




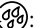


2.1 Description of the appliance

(page 2 - A)

- A1. Beans container lid
- A2. Pre-ground coffee funnel lid
- A3. Beans container
- A4. Pre-ground coffee funnel
- A5. Grinding adjustment dial
- A6. Main switch (certain models only)
- A7. Water tank
- A8. Infuser door
- A9. Infuser
- A10. Power cord
- A11. Coffee spouts (adjustable height)
- A12. Condensate tray
- A13. Coffee grounds container
- A14. Drip tray
- A15. Drip tray grille (*certain models only)
- A16. Drip tray water level indicator
- A17. Cup tray
- A18. Cappuccino maker (removable)
- A19. Hot water and steam connection nozzle (removable)
- A20. Cappuccino maker selection ring (*certain models only)
- A21. Steam/hot water dial
- A22. Cup shelf

2.2 Description of the control panel

(page 3 - B)

- B1. Lights
- B2. : "Espresso" coffee (1 cup) button with light
- B3. : "2x Espresso" coffee (2 cups) button with light
- B4. : steam button with light
- B5. : rinse button
- B6. Aroma/pre-ground function selection dial
- B7. : On/Standby button
- B8. : "Coffee" button with light
- B9. *Varies according to model:
 - : "Long" button with light
 - : "Doppio+" button with light

2.3 Description of the accessories

(page 3 - C)

- C1. Indicator paper
- C2. Pre-ground coffee measure
- C3. Descaler
- C4. Water softener filter (certain models only)

2.4 Description of lights



An alarm is displayed on the control panel (see section "21. Troubleshooting").



Light on steadily: the coffee grounds container must be inserted;

Light flashing: the grounds container is full and must be emptied.



Light on steadily: the water tank is missing;

Light flashing: there is not enough water in the tank.



Light flashing: the appliance must be descaled (see section "17. Descaling").

Light on steadily: the appliance is performing a descaling cycle.

For a description of all the lights, see section "20. Explanation of lights".

3. SETTING UP THE APPLIANCE

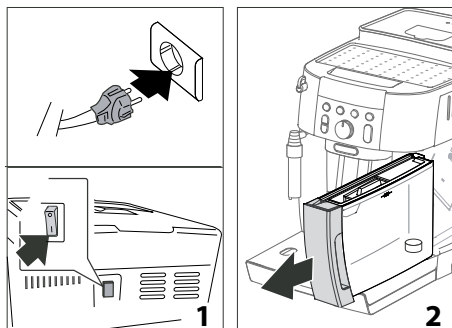
Please note:

- The first time you use the appliance, rinse with hot water all removable accessories which may come into contact with water or milk.
- Possible traces of coffee in the mill are the result of operating tests performed on the appliance before sale, proof of the meticulous care and attention we invest in our products.

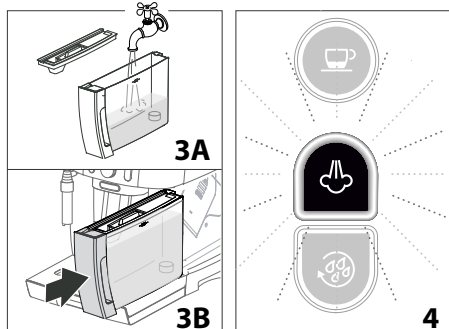
- You should customise water hardness as soon as possible following the instructions in section "18. Setting water hardness".

Proceed as described:

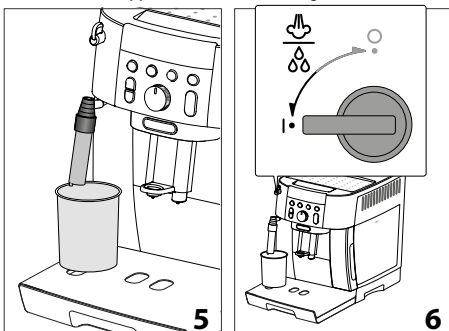
1. Plug the appliance into the mains socket and in models with main switch «A6», make sure it is pressed in the I position «fig. 1».



2. The light flashes on the control panel (B). Remove the water tank (A7) (fig. 2), fill to the MAX line with fresh water (fig. 3A) then put back in the appliance (fig. 3B).



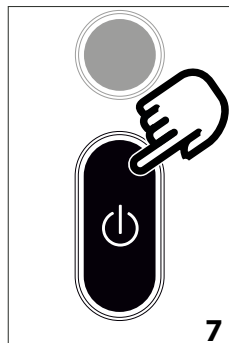
3. The button (B4) (fig. 4) flashes on the control panel.
4. Place a container with a minimum capacity of 100 ml under the cappuccino maker (A18) (fig. 5).



5. Turn the steam/hot water dial (A21) to the "I" position (fig. 6). The beverage buttons flash and water is delivered from the cappuccino maker.
6. When delivery stops automatically, turn the steam dial back to the "0" position.

The appliance goes off.

To use it, press the button (B7) (fig. 7).



Please note:

- The first time you use the appliance, you need to make 4-5 cups of coffee before the appliance starts to give satisfactory results.
- To enjoy your coffee even more and improve the performance of your appliance, we recommend installing a water softener filter (C4) as described in section "10. Water softener filter". If your model is not provided with a filter, you can request one from De'Longhi customer services.

4. TURNING THE APPLIANCE ON

Please note:

- Models with main switch «A6» only:* Before turning the appliance on, make sure the main switch on the back of the appliance is in the I position (fig. 1).
- Make sure the steam/hot water dial (A21) is in the 0 position.
- Each time the appliance is turned on, it performs an automatic preheat and rinse cycle which cannot be interrupted. The appliance is ready for use only after completion of this cycle.

Danger of scalding!

During rinsing, a little hot water comes out of the coffee spouts (A11) and is collected in the drip tray (A14) underneath. Avoid contact with splashes of water.

- To turn the appliance on, press the button (B7) (fig. 7). The "coffee" buttons (B2), (B3), (B8) and (B9) flash on the control panel (B) to indicate the appliance is heating up.

While heating up, the machine performs a rinse cycle. As well as heating the boiler, this also heats the internal circuits by circulating hot water.


The appliance is at temperature when the coffee buttons on the control panel remain on steadily.

5. TURNING THE APPLIANCE OFF

Whenever the coffee machine is turned off after being used to make coffee, it performs an automatic rinse cycle.


Danger of scalding!

During rinsing, a little hot water flows from the coffee spouts (A11). Avoid contact with splashes of water.


- To turn the appliance off, press the  button (B7) (fig. 7);
- if provided, the appliance performs a rinse cycle then goes off (stand-by).

Please note!

If you will not be using the appliance for some time, unplug it from the mains socket:

- first turn the appliance off by pressing the  button;
- in models with main switch «A6», just press it to the **0** position.

Important!

Always turn the appliance off with the  button (standby) before unplugging from the mains socket or (if present) pressing the main switch to the **0** position.


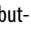
6. SETTING WATER HARDNESS











For instructions on setting water hardness, see section “18. Setting water hardness”.

7. AUTO-OFF

The time can be changed so that the appliance switches off after being idle for 15 or 30 minutes, or after 1, 2 or 3 hours.

To change the Auto-off setting, proceed as follows:

1. With the appliance off (standby) and the main switch (A6) in the **I** position (fig. 1), press and hold the  button (B9) until the lights (B1) on the control panel come on;
2. Select the required time interval by pressing the  button (B2):

	15 min.
 	30 min.
  	1 hour
   	2 hours



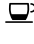
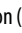
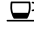


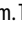
    	3 hours
--	---------

3. Press the  button (B9) to confirm. The lights go off.

The auto-off time is now programmed.

8. ENERGY SAVING

Use this function to enable or disable energy saving. When enabled, this mode reduces energy consumption in compliance with current European regulations.

1. The appliance must be plugged into the mains socket and the main switch «A6» (if present) must be in the **I** position «fig. 1».
2. Press and hold the  button (B4) until the  light on the control panel comes on;
3. To disable the function, press the  button (B2). The  light flashes;
4. To enable the function again, press the  button (B2) again: the  light comes on;
5. Press the  button (B9) to confirm. The  light goes off.


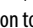
The energy saving setting is now programmed.

Please note!


- When in energy saving mode, a few seconds may elapse before the first coffee is delivered as the appliance must heat up again.

9. SETTING THE TEMPERATURE

To change the temperature of the water used to make the coffee, proceed as follows:

1. The appliance must be plugged into the mains socket and the main switch «A6» (if present) must be in the **I** position «fig. 1».
2. Press and hold the  button (B2) until the lights on the control panel come on;
3. Press the  button to select the required temperature:



4. Press the  button (B9) to confirm the selection. The lights go out.

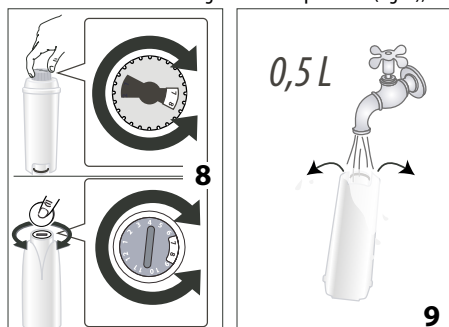
10. WATER SOFTENER FILTER

Certain models are fitted with a water softener filter (C4). If this is not the case with your model, you are recommended to purchase one from De'Longhi customer services.

To use the filter correctly, follow the instructions below.

10.1 Installing the filter

1. Turn the appliance on and wait until it is ready for use.
2. Remove the filter (C4) from the packaging. The date indicator disk varies according to the filter provided (fig. 8);

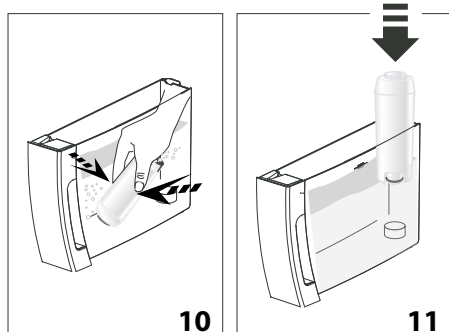


3. Turn the date disk to display the next 2 months of use.

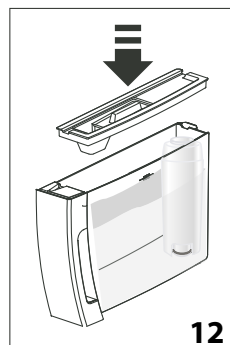
Please note

The filter lasts about two months if the appliance is used normally. If the coffee machine is left unused with the filter installed, it will last no longer than 3 weeks.

4. To activate the filter, run tap water through the hole in the filter as shown in figure 9 until water comes out of the openings at the side for more than a minute;
5. Extract the tank (A7) from the appliance and fill with water;
6. Insert the filter in the water tank and immerse it completely for about ten seconds, sloping it and pressing it lightly to enable the air bubbles to escape (fig. 10).
7. Insert the filter in the filter housing and press as far as it will go (fig. 11);



8. Close the tank with the lid (fig. 12), then replace the tank in the machine;



9. Position a container with a minimum capacity of 500ml under the cappuccino maker/hot water spout (A18).
10. Deliver hot water by turning the steam/hot water dial (A21) to the **I** position.
11. Deliver at least 500 ml of water, then turn the steam/hot water dial to the **0** position.

The filter is now active and you can use the coffee machine.

Please note:

Occasionally one delivery of hot water is not enough to install the filter and the following indicators will come on during installation:



If this happens repeat the installation procedure from point 8.

The filter is now active and you can use the coffee machine.

10.2 Removal and replacement of the water softener filter

After two months (see date indicator) or when the appliance has not been used for 3 weeks, you should replace the filter:

1. Extract the tank (A7) and exhausted filter (C4);
2. To replace the filter, remove the new filter from the packaging and proceed as described in the previous section.

The filter is now activated.


11. RINSING


Use this function to deliver hot water from the coffee spouts (A11) to clean and heat the appliance's internal circuit.

Place a container with a minimum capacity of 100ml under the coffee and hot water spouts.

Important! Danger of scalding.

Do not leave the appliance unattended while hot water is being delivered.

- 1) To start this function, press the  button (B5);
- 2) After a few seconds, hot water is delivered from the coffee spouts, cleaning and heating the appliance's internal circuit.

- 3) To interrupt the function manually, press the  button again.

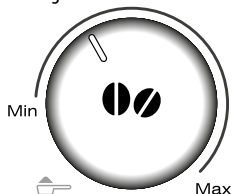
Please note!

- If the appliance is not used for more than 3-4 days, when you turn it on again, we strongly recommend performing 2/3 rinses before use;
- After cleaning, it is normal for the grounds container (A13) to contain water.

12. MAKING COFFEE USING COFFEE BEANS

12.1 Selecting the coffee taste

Turn the coffee taste selection dial (B6) to set the required taste. Turning clockwise increases the quantity of coffee beans that will be ground by the machine and consequently the strength of the coffee. Turn the dial to MIN for an extra mild coffee and to MAX for an extra strong coffee.

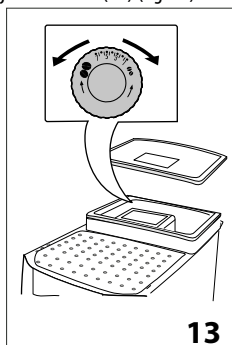


Please note:

- The first time you use the appliance, you will need to make a number of coffees to identify the correct dial position through trial and error.
- Do not turn the dial too far towards MAX, otherwise the coffee may be delivered too slowly (a drop at a time), particularly when making two cups of coffee at the same time.

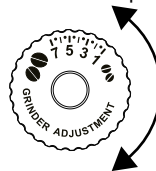
12.2 Adjusting the coffee mill

The coffee mill is factory-set in such a way that the coffee will be delivered correctly and should not require regulating initially. However, if after making the first few coffees you find that the coffee is either too weak and not creamy enough or delivery is too slow (a drop at a time), this can be corrected by adjusting the grinding adjustment dial (A5) (fig. 13).



Please note:

The grinding adjustment dial must only be turned when the coffee mill is in operation.




If the coffee is delivered too slowly or not at all, turn one click clockwise towards 7. For fuller bodied creamier coffee, turn one click anticlockwise towards 1 (do not turn more than one click at a time otherwise the coffee could be delivered a drop

at a time).

The effect of the adjustment will be noticed only after making a further 2 cups of coffee, at least. If this adjustment does not produce the desired result, turn the dial another click.

12.3 Tips for a hotter coffee

For hotter coffee, proceed as follows:

- perform a rinse cycle by pressing the  button (B5);
- warm the cups with hot water using the hot water function (see section "15. Delivering hot water");
- increase the coffee temperature (see section "9. Setting the temperature").

12.4 Coffee delivery

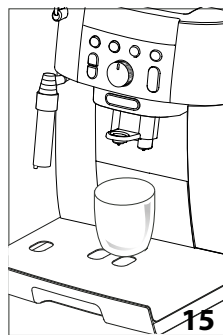
Important!

Do not use green, caramelised or candied coffee beans as they could stick to the coffee mill and make it unusable.

1. Fill the container (A3) with coffee beans (fig. 14);

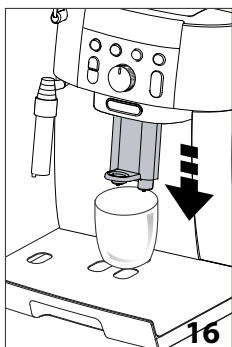


14








15

2. Place under the coffee spouts (A11):
 - 1 cup, to make 1 coffee (fig. 15);
 - 2 cups, to make 2 coffees.
3. Lower the spouts as near as possible to the cup. This makes a creamier coffee (fig. 16);



4. Then select your required coffee:

Recipe	Quantity	Programma- ble quantity
Espresso 	≈ 40 ml	from ≈20 to ≈ 120ml
2x Espresso 	≈ 40 ml + 40 ml	from ≈40 to ≈ 240ml
Coffee 	≈ 180 ml	from ≈100 to ≈ 240ml
* Long 	≈ 160 ml	from ≈115 to ≈ 250cc
* Doppio + 	≈ 120 ml	from ≈ 80 to ≈ 180 ml

(*Varies according to model)

5. Preparation begins and the light corresponding to the selected button flashes on the control panel (B).

Please note:

- While the appliance is making coffee, the flow can be interrupted at any moment by pressing one of the coffee buttons.
- At the end of delivery, to increase the quantity of coffee in the cup, just press one of the coffee icons (within 3 seconds).

Once the coffee has been made, the appliance is ready to make the next beverage.

Please note:

- Indicator lights may appear on the control panel (B) during use. Their meaning is given in section "20. Explanation of lights".
- For hotter coffee, see section "12.3 Tips for a hotter coffee".
- If the coffee is delivered a drop at a time, too weak and not creamy enough or too cold, read the tips in section "21. Troubleshooting".

13. MAKING COFFEE USING PRE-GROUND COFFEE

Important!

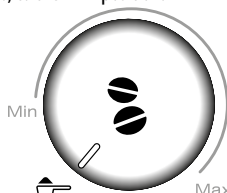
- Never place coffee beans in the pre-ground coffee funnel as this could damage the appliance.
- Never add pre-ground coffee when the machine is off, as it could infiltrate and soil the inner workings. This could damage the machine.
- Never use more than 1 level measure (C2) as it could soil the inside of the coffee machine or block the funnel (A4). Given the quantity of coffee used, it is not advisable to prepare "☕ 2x Espresso" (B3), "☕ Coffee" (B8) or (certain models only) "☕☕ Doppio+" (B9).



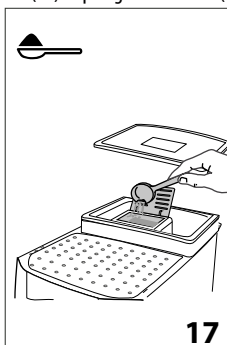
Please note:

When using pre-ground coffee, only one cup can be made at a time.

- Make sure the appliance is on;
- Turn the coffee taste selection dial (B6) anticlockwise as far as it will go, to the ☕ position.



- Make sure the funnel (A4) is not blocked, then add one level measure (C2) of pre-ground coffee (fig. 17).



- Place a cup under the coffee spouts (A11).
- Press the required 1 cup button.
- Preparation begins.

Important! Making "☕☕ Long" coffee (B9) (certain models only):

Halfway through preparation, delivery stops, the ⚠ light comes on and the ☕☕ light flashes. Add one level measure of pre-ground coffee and press the "☕☕ Long" button.

Please note:

If "Energy Saving" mode is active, you may have to wait a few seconds before the first coffee is delivered.

13.1 Selecting the quantity in the cup

To change the quantity of coffee the appliance delivers automatically into the cup, proceed as described below:

1. Place a sufficiently large cup or glass under the coffee spouts (A11);
2. Press the button corresponding to the quantity to be modified and hold it down until the light flashes and the appliance starts delivering coffee, then release;
3. When the coffee in the cup reaches the desired level, press the same button again to memorise the new amount. (See the table in section "12.4 Coffee delivery").

The machine is now reprogrammed with the new quantities.

14. MAKING CAPPUCCINO***Danger of scalding!***

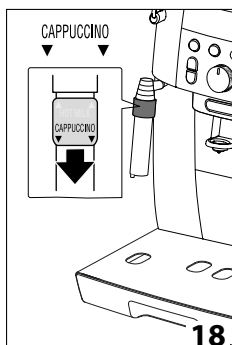
During preparation, steam is given off. Take care to avoid scalds.

1. When preparing cappuccino, make the coffee in a large cup;
2. Fill a container (preferably one with a handle to avoid scalding) with about 100 grams of milk for each cappuccino. When choosing the appropriate size of container, remember that the milk doubles or triples in volume;



Please note:

For a richer and denser froth, use skimmed or partially skimmed milk from the refrigerator (about 5°C). To avoid producing milk with poor froth or large bubbles, always clean the cappuccino maker as described in the section "14.1 Cleaning the cappuccino maker after use".

3. **Models with adjustable cappuccino maker only:** Make sure the cappuccino maker selection ring (A20) is positioned downwards in the "CAPPUCCINO" position (fig. 18);



4. The cappuccino maker (A18) can be turned slightly outwards to allow containers of any size to be used;

5. Immerse the cappuccino maker in the milk container;
6. Press the  button (B4);
7. When the light in the  button flashes after a few seconds, turn the steam dial (A21) to the **I** position (fig. 6). Steam is delivered from the cappuccino maker, giving the milk a creamy frothy appearance and making it more voluminous;
8. For a creamier froth, swirl the container slowly, moving it from the bottom upwards. (Steam should not be generated by the machine for more than 3 minutes continuously).
9. When you have obtained the required froth, stop steam delivery by turning the dial to the **0** position.

Danger of scalding!

Interrupt steam delivery before removing the container with the frothed milk to avoid burns caused by splashes of boiling milk.

10. Add the milk froth to the coffee prepared previously. The cappuccino is ready. Sweeten to taste and, if desired, sprinkle the froth with a little cocoa powder.

Please note!

If "Energy saving" is active, you may have to wait a few seconds before steam is delivered.

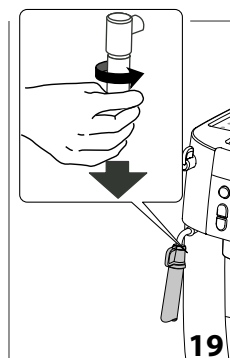
14.1 Cleaning the cappuccino maker after use

Clean the cappuccino maker (A18) each time you use it to avoid the build-up of milk residues or blockages.

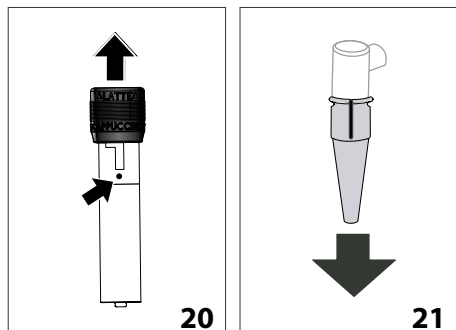
Danger of scalding!

When cleaning the cappuccino maker, a little hot water is delivered. Avoid contact with splashes of water.

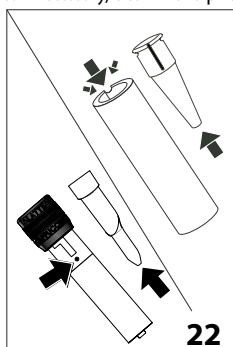
1. Deliver a little water by turning the steam/hot water dial (A21) to the **I** position. Then stop delivery by turning the dial back to the **0** position.
2. Wait a few minutes for the cappuccino maker to cool down. Turn the cappuccino maker downwards to remove it (fig. 19).



3. **Models with adjustable cappuccino maker only:** Move the ring (A20) upwards until the hole shown in fig. 20 is uncovered.



4. Remove the nozzle (A19) downwards (fig. 21).
5. Make sure the two holes shown by the arrow in fig. 22 are not blocked. If necessary, clean with a pin.



6. Reinsert the nozzle and replace the cappuccino maker on the nozzle, pushing it upwards and turning it until it is attached.

15. DELIVERING HOT WATER

Important! Danger of scalding.

Never leave the machine unattended while delivering hot water. The spout of the cappuccino maker (A18) becomes hot during delivery.

1. Place a container under the cappuccino maker (as close as possible to avoid splashes).
2. Turn the steam/hot water dial (A21) to the **I** position (fig. 6).
3. To stop hot water delivery manually, turn the steam/hot water dial to the **0** position.

Please note!

If "Energy Saving" is active, you may have to wait a few seconds before hot water and steam are delivered.

16. CLEANING

16.1 Cleaning the machine

The following parts of the machine must be cleaned regularly:


- the appliance's internal circuit;
- coffee grounds container (A13);
- drip tray (A14), drip tray grille* (A15) and condensate tray (A12);
- water tank (A7);
- coffee spouts (A11);
- cappuccino maker (A18) ("14.1 Cleaning the cappuccino maker after use");
- pre-ground coffee funnel (A4);
- infuser (A9), accessible after opening the infuser door (A8);
- control panel (B).

Important!

- Do not use solvents, abrasive detergents or alcohol to clean the coffee machine. With De'Longhi superautomatic coffee machines, no chemical products are required for cleaning purposes.
- None of the components of the appliance can be washed in a dishwasher with the exception of the drip tray grille* (A15).
- Do not use metal objects to remove encrustations or coffee deposits as they could scratch metal or plastic surfaces.

16.2 Cleaning the internal circuit


If the appliance is not used for more than 3/4 days, before using it again, we strongly recommend switching it on and:

- 2/3 rinse cycles by pressing  (B5);
- delivering hot water for a few seconds (section "15. Delivering hot water").

Please note:

Water may find its way into the grounds container (A13) during the above rinse procedure: this is quite normal.

16.3 Cleaning the coffee grounds container

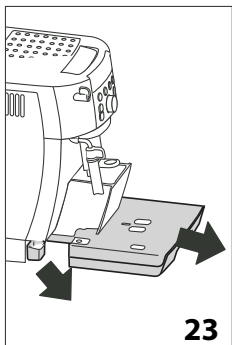
When the  light flashes, the coffee grounds container (A13) must be emptied and cleaned. The appliance cannot be used to make coffee until the grounds container has been cleaned. Even if not full, the empty grounds container message is displayed 72 hours after the first coffee has been prepared. For the 72 hours to be calculated correctly, the machine must never be turned off with the main switch (A6) (if provided).

Important! Danger of scalding

If you make a number of cappuccinos one after the other, the metal cup tray (A17) becomes hot. Wait for it to cool down before touching it and handle it from the front only.

To clean (with the machine on):

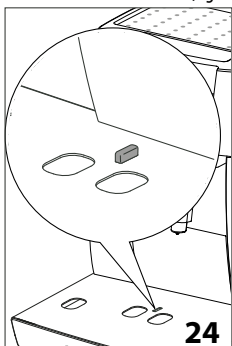
1. Remove the drip tray (A14) (fig. 23), empty and clean.



2. Empty the grounds container (A13) and clean thoroughly to remove all residues left on the bottom.
3. Check the red condensate tray (A12) (fig. 23) and empty if necessary.

16.4 Cleaning the drip tray and condensate tray **Important!**

The drip tray (A14) is fitted with a level indicator (A16) (red) showing the amount of water it contains (fig. 24).



Before the indicator protrudes from the cup tray (A17), the drip tray must be emptied and cleaned, otherwise the water may overflow the edge and damage the appliance, the surface it rests on or the surrounding area.

To remove the drip tray:

1. Remove the drip tray and grounds container (A13) (fig. 23);
2. Remove the cup tray (A17) and drip tray grille* (A15), then empty the drip tray and grounds container and wash all components;
3. Check the red condensate tray (A12) and empty if necessary;
4. Replace the drip tray complete with grille* and grounds container.

Important!

When removing the drip tray, the grounds container must be emptied, even if it contains few grounds.

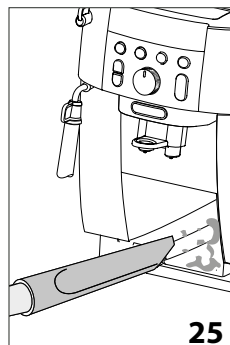
If this is not done, when you make the next coffees, the grounds container will fill up more than expected and clog the machine.

16.5 Cleaning the inside of the machine

Danger of electric shock!

Before cleaning internal parts, the machine must be turned off (see section "5. Turning the appliance off") and unplugged from the mains power supply. Never immerse the machine in water.

5. Check regularly (about once a week) that the inside of the appliance (accessible after removing the drip tray (A14)) is not dirty. If necessary, remove coffee deposits with a brush and a sponge;
6. Remove all the residues with a vacuum cleaner (fig. 25).

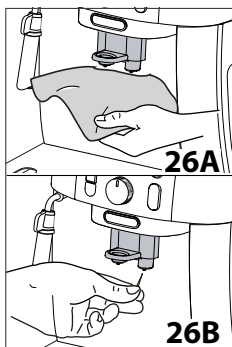


16.6 Cleaning the water tank

1. Clean the water tank (A7) regularly (about once a month) and whenever you replace the water softener filter (C4) (if provided) with a damp cloth and a little mild washing up liquid;
2. Remove the filter (C4) (if present) and rinse with running water;
3. Replace the filter (if installed), fill the tank with fresh water and replace;
4. (Models with water softener filter only) Deliver about 100ml of water.

16.7 Cleaning the coffee spouts

1. Clean the coffee spouts (A11) regularly with a sponge or cloth (fig. 26A);



- Check the holes in the coffee spouts are not blocked. If necessary, remove coffee deposits with a toothpick (fig. 26B).

16.8 Cleaning the pre-ground coffee funnel

Check regularly (about once a month) that the pre-ground coffee funnel (A4) is not blocked. If necessary, remove coffee deposits with a brush.

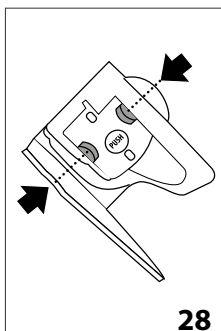
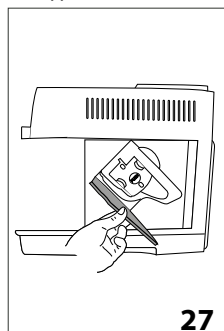
16.9 Cleaning the infuser

The infuser (A9) must be cleaned at least once a month.

Important!

The infuser cannot be removed when the machine is on.

- Make sure the machine is correctly turned off (see section "5. Turning the appliance off");
- Remove the water tank (A7);
- Open the infuser door (A8) (fig. 27) on the right side of the appliance;



- Press the two coloured release buttons inwards and at the same time pull the infuser outwards (fig. 28);
- Soak the infuser in water for about 5 minutes, then rinse under the tap;

Important!

RINSE WITH WATER ONLY

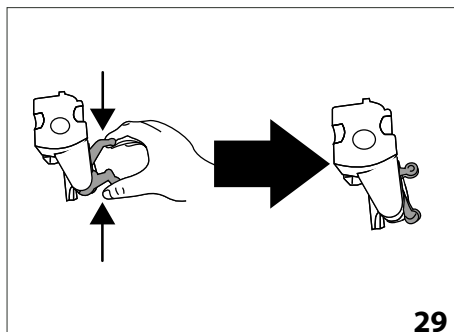
NO WASHING UP LIQUID - NO DISHWASHER

Clean the infuser without using washing up liquid as it could be damaged.

- Use the brush to remove any coffee residues left in the infuser housing, visible through the infuser door;
- After cleaning, replace the infuser by sliding it onto the internal support, then push the PUSH symbol fully in until it clicks into place;

Please note:

If the infuser is difficult to insert, before insertion, adapt it to the right size by pressing the two levers (fig. 29).



- Once inserted, make sure the two coloured buttons have snapped out;
- Close the infuser door;
- Put the water tank back.

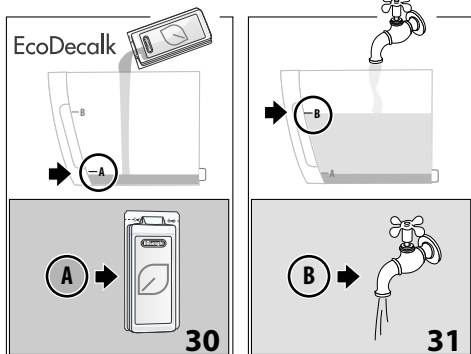
17. DESCALING

Descalc the appliance when the  light on the control panel flashes.

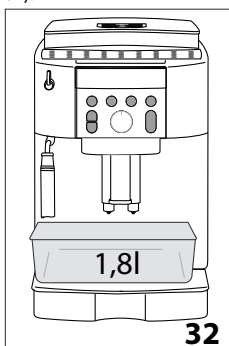
Important!

- Before use, read the instructions and the labelling on the descaler pack.
- Use De'Longhi descaler only. Using unsuitable descaler products and/or performing the descale procedure incorrectly could give rise to faults not covered by the manufacturer's guarantee.
- Descaler could damage delicate surfaces. If the product is accidentally spilt, dry immediately.

To descale	
Descaler	De'Longhi descaler
Container	Recommended capacity: 1.8
Time	~45min



1. Turn the appliance on and wait until it is ready for use.
2. Empty the water tank (A7) and remove the water softener filter (C4) (if present).
3. Pour the descaler (C3) into the water tank up to the level **A** (corresponding to a 100ml pack) marked on the back of the tank (fig. 30), then add water (1 litre) up to level **B** (fig. 31).
4. Place an empty container with a minimum capacity of 1 litre under the cappuccino maker (A18) and coffee spouts (A11) (fig. 32).



5. Press and hold the button (B5) for at least 5 seconds to confirm that you have added the solution and begin the descaling procedure. The light in the button remains on steadily to indicate that the descaling programme has begun. The light flashes telling you to turn the steam dial to the **I** position.

Important! Danger of scalding

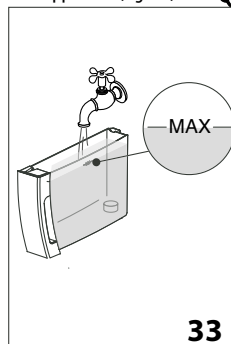
Hot water containing acid flows from the cappuccino maker and coffee spouts. Avoid contact with splashes of water.

6. Turn the steam dial (A21) a half turn anticlockwise to the **I** position. The descaler solution flows out of the cappuccino maker into the underlying container.

The descaling programme automatically performs a series of rinses and pauses to remove all the scale. It is normal for several minutes of inactivity to elapse between rinses.

After about 25 minutes, the water tank is empty and the and lights flash. Turn the steam dial clockwise as far as it will go to the **0** position.

7. The appliance is now ready to be rinsed out with clean water. Empty the container used to collect the descaler solution. Extract the water tank, empty, rinse under running water, fill with fresh water up to the **MAX** level and put back in the appliance (fig. 33). The light flashes.



8. Place the container used to collect the descaler solution empty under the cappuccino maker and coffee spouts (fig. 32).
9. Turn the hot water/steam dial to the **I** position to begin rinsing. Hot water is delivered first from the cappuccino maker, to continue and end with the coffee spouts.
10. When the water tank is completely empty, the and lights flash on the control panel. Turn the steam/hot water dial to the **0** position.
11. Empty the container used to collect the rinsing water. Remove the water tank, replace the water softener filter (if removed previously), fill the tank up to the **MAX** level with cold water and insert in the appliance. The steam light flashes.
12. Place the container used to collect the rinsing water empty under the cappuccino maker;
13. Turn the hot water/steam dial to the **I** position. The appliance begins rinsing again from the cappuccino maker only.
14. When it finishes, the steam light flashes on the control panel. Turn the steam/hot water dial to the **0** position.
15. Top up the water tank with fresh water to the **MAX** level and put back in the machine.

The descaling cycle is now complete.

Please note!

- If the descaling cycle is not completed correctly (e.g. electrical power failure) it is advisable to repeat the procedure;

- After descaling, it is normal for the grounds container (A13) to contain water;
- If the water tank has not been filled to the MAX level, at the end of descaling, the appliance requests a third rinse to guarantee that the descaler solution has been completely eliminated from the machine's internal circuits. Before starting rinsing, remember to empty the drip tray.

18. SETTING WATER HARDNESS

Descaling is necessary after a period of operation established according to the water hardness set.
 The machine is set by default for a hardness level of 4. The machine can also be programmed according to the hardness of the mains water in the various regions so that the machine needs to be descaled less often.

18.1 Measuring water hardness

1. Remove the "TOTAL HARDNESS TEST" indicator paper (C1) from its pack (attached to the English instructions);
2. Immerse the paper completely in a glass of water for one second;
3. Remove the paper from the water and shake lightly. After about a minute, 1, 2, 3, or 4 red squares will appear, depending on the hardness of the water. Each square corresponds to 1 level;

Indicator paper	Water hardness	Corresponding setting
	low	
	medium	
	high	
	maximum	

18.2 Setting water hardness








1. The appliance must be plugged into the mains socket and the main switch «A6» (if present) must be in the I position «fig. 1».
2. Press and hold the button (B5) for at least 5 seconds.
 The , and lights come on together;
3. Press the button (B2) to set the actual water hardness (as measured by the indicator paper - see table in previous section).
4. Press the / button (B9) to confirm the selection.







The machine is now reprogrammed with the new water hardness setting.

19. TECHNICAL DATA

Voltage:	220-240 V~ 50/60 Hz max. 10A
Absorbed power:	1450W
Pressure:	1.5MPa (15 bars)
Max. water tank capacity:	1.8 L
Size LxDxH:	240x440x360 mm
Cord length:	1150 mm
Weight:	9.2 kg
Max. beans container capacity:	250 g

20. EXPLANATION OF LIGHTS


LIGHTS DISPLAYED	POSSIBLE CAUSE	REMEDY
 FLASHING	The steam/hot water dial must be turned (A21)	Turn the steam/hot water dial
 FLASHING	Insufficient water in the tank (A7)	Fill the tank with water and/or insert it correctly, pushing it as far as it will go until it clicks into place.
 ON STEADILY	The tank (A7) is missing or not correctly in place	Insert the tank correctly, pushing it as far as it will go until it clicks into place.
 FLASHING	The grounds container (A13) is full	Empty the grounds container and drip tray (A14), clean and replace. Important: when removing the drip tray, the grounds container MUST be emptied, even if it contains few grounds. If this is not done, when you make the next coffees, the grounds container may fill up more than expected and clog the machine.
 ON	After cleaning, the grounds container (A13) has not been replaced	Remove the drip tray (A14) and insert the grounds container.
 FLASHING	The grinding is too fine and the coffee is delivered too slowly or not at all	Repeat coffee delivery and turn the grinding adjustment dial (A5) (fig. 13) one click clockwise towards "7" while the coffee mill is in operation. If after making at least 2 coffees delivery is still too slow, repeat the correction procedure, turning the grinding adjustment dial another click (see section "12.2 Adjusting the coffee mill"). If the problem persists, turn the steam/hot water dial (A21) to the I position and let some water run from the cappuccino maker (A18).
	If the water softener filter (C4) is present, an air bubble may have been released inside the circuit, obstructing delivery	Deliver a little water from the cappuccino maker (A18) by turning the steam/hot water dial (A21) to the I position until the flow is regular (fig. 5).
 FLASHING	The coffee beans have run out	Fill the beans container (A3 - fig. 14).
➔		


LIGHTS DISPLAYED	POSSIBLE CAUSE	REMEDY
 FLASHING ON	The pre-ground coffee function has been selected without placing any pre-ground coffee in the funnel (A4)	Place pre-ground coffee in the funnel (fig. 17) or deselect the "pre-ground" function.
	The pre-ground coffee funnel (A4) is clogged	Empty the funnel with the help of a brush as described in section "16.8 Cleaning the pre-ground coffee funnel".
 FLASHING	The machine must be descaled	The descaling procedure described in section "17. Descaling" needs to be carried out without delay.
 FLASHING	Too much coffee has been used	Select a milder taste by turning the dial (B6) anticlockwise.
 FLASHING	The water circuit is empty	Turn the steam/hot water dial (A21) to the I position until delivery stops, then bring it back to the 0 position. If the alarm occurs while hot water or steam is being delivered, turn the dial to the 0 position. Turn the steam/hot water dial to the I position until delivery stops, then bring it back to the 0 position. If the problem persists, make sure the water tank (A7) is fully inserted.
 ON STEADILY	The inside of the machine is very dirty	Clean the inside of the appliance thoroughly, as described in section "16. Cleaning". If the message is still displayed after cleaning, contact a customer service centre.
 FLASHING	The infuser (A9) has not been replaced after cleaning	Insert the infuser as described in section "16.9 Cleaning the infuser".

21. TROUBLESHOOTING

Below is a list of some of the possible malfunctions.

If the problem cannot be resolved as described, contact customer services.

PROBLEM	POSSIBLE CAUSE	REMEDY
The coffee is not hot.	The cups were not preheated.	Warm the cups by rinsing them with hot water (Please note: you can use the hot water function).
	The internal circuits of the appliance have cooled down because 2/3 minutes have elapsed since the last coffee was made.	Before making coffee, rinse the internal circuits by pressing the  button (B5).
	The coffee temperature setting is too low.	Set a higher coffee temperature in the menu (see section "9. Setting the temperature").
→		

PROBLEM	POSSIBLE CAUSE	REMEDY
The coffee is weak or not creamy enough.	The coffee beans have been ground too coarsely.	Turn the grinding adjustment dial (A5) one click anticlockwise towards 1 while the coffee mill is in operation (fig. 13). Continue one click at a time until coffee delivery is satisfactory. The effect is only visible after delivering 2 coffees (see section "12.2 Adjusting the coffee mill").
	The coffee is unsuitable.	Use coffee for espresso machines.
The coffee is delivered too slowly or drop by drop.	The coffee is ground too finely.	Turn the grinding adjustment dial (A5) one click clockwise towards "7" while the coffee mill is in operation (fig. 13). Continue one click at a time until coffee delivery is satisfactory. The effect is only visible after delivering 2 coffees (see section "12.2 Adjusting the coffee mill").
The infuser (A9) cannot be removed	The appliance has not been turned off correctly	Turn the appliance off by pressing the  button (B5) (see section "5. Turning the appliance off").
At the end of descaling, the appliance requests a third rinse	During the two rinse cycles, the water tank has not been filled to the MAX level.	Follow the instructions displayed by the appliance, but first empty the drip tray (A14) to avoid the water overflowing.
The frothed milk has large bubbles	The milk is not cold enough or is not semi-skimmed	Ideally, use skimmed or semi-skimmed milk from the refrigerator (about 5°C). If the result is still not as desired, try changing the brand of milk.
The milk is not frothed	The cappuccino maker (A18) and steam/hot water connection nozzle (A19) are dirty	Clean as described in section "14.1 Cleaning the cappuccino maker after use".
Steam delivery stops	A safety device stops steam delivery	Wait a few minutes and then enable the steam function again.
The appliance does not come on	The appliance is not plugged into the mains socket	Insert the plug (A10) into the mains socket (fig. 1).
	When present, make sure the main switch «A6» is on.	Press the main switch to the I position «fig. 1».
Coffee does not come out of one or both of the spouts	The coffee spouts (A11) are blocked	Clean as described in section "16.7 Cleaning the coffee spouts".

Register Now

www.delonghi.com/register



De'Longhi Appliances via Seitz, 47 31100 Treviso, Italy delonghi.com

57132C9285_00_1224