

KENWOOD

TYPE JEP01

instructions



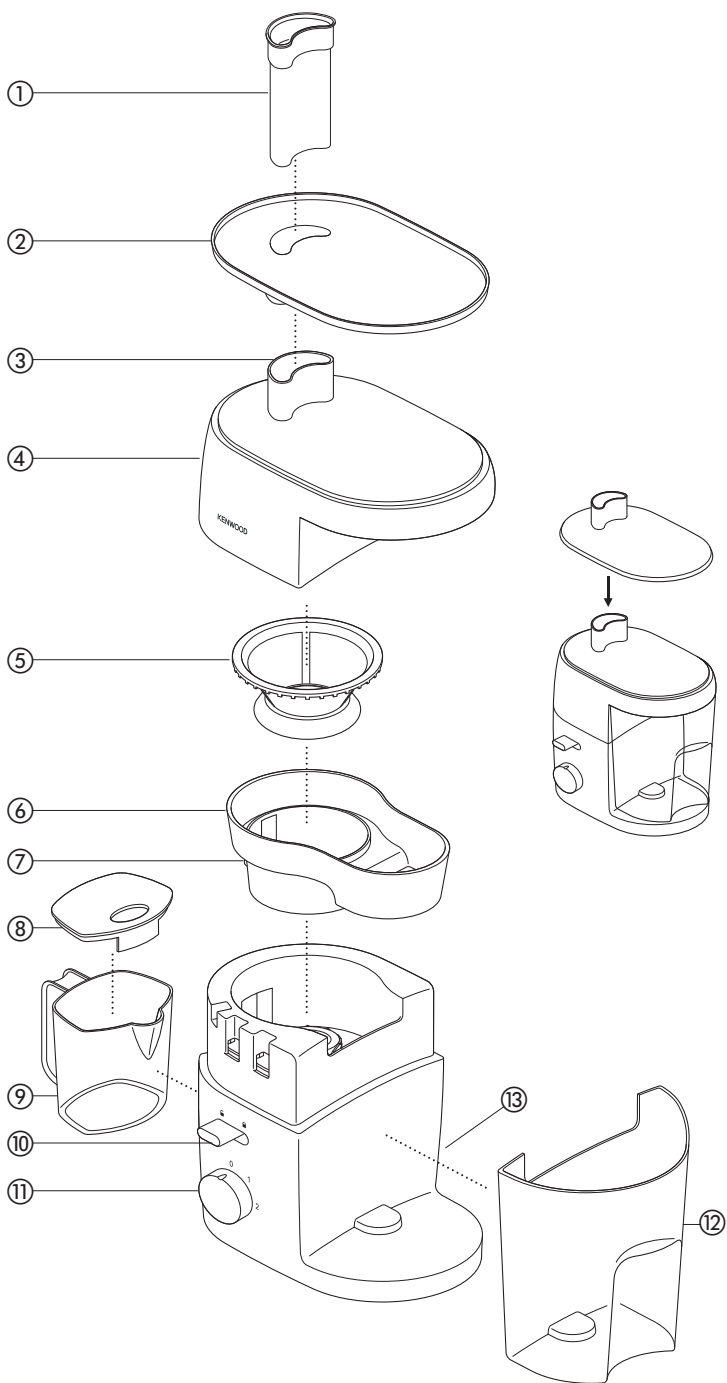
English

2 - 8

عربي

٩ - ١٤





English

safety

- Read these instructions carefully and retain for future reference.
- Remove all packaging and any labels.
- **Do not** use the juicer if the filter is damaged.
- **DO NOT operate the juicer without the pulp collector fitted.**
- The cutting blades on the base of the filter are very sharp, take care when handling and cleaning the filter.
- Never put the motor unit, cord or plug in water – you could get an electric shock.
- Switch off and unplug:
 - before fitting or removing parts
 - before cleaning
 - after use.
- Never use a damaged juicer. Get it checked or repaired: see 'Service and customer care'.
- Only use the pusher supplied. Never put your fingers in the feed tube. Unplug and take the juicer apart before unblocking the feed tube.
- Before removing the lid, switch off and wait for the filter to stop.
- Never let the cord touch hot surfaces or hang down where a child could grab it.
- Do not touch moving parts.
- Never leave the juicer on unattended.
- Children should be supervised to ensure that they do not play with the appliance.
- This appliance shall not be used by children. Keep the appliance and its cord out of reach of children.

- Misuse of your appliance can result in injury.
- Appliances can be used by persons with reduced physical, sensory or mental capabilities or lack of experience and knowledge if they have been given supervision or instruction concerning use of the appliance in a safe way and if they understand the hazards involved.
- Only use the appliance for its intended domestic use. Kenwood will not accept any liability if the appliance is subject to improper use, or failure to comply with these instructions.

before plugging in

- Make sure your electricity supply is the same as the one shown on the underside of your juicer.

Important – UK only

- The wires in the cord are coloured as follows:
Blue = Neutral,
Brown = Live.
- The appliance must be protected by a 3A approved (BS1362) fuse.

Note:

- For non-rewireable plugs the fuse cover **MUST** be refitted when replacing the fuse. If the fuse cover is lost then the plug must not be used until a replacement can be obtained. The correct fuse cover is identified by colour and a replacement may be obtained from your Kenwood Authorised Repairer (see Service).
- If a non-rewireable plug is cut off it must be DESTROYED IMMEDIATELY. An electric shock hazard may arise if an unwanted non-rewireable plug is inadvertently inserted into a 13A socket outlet.
- This appliance conforms to EC directive 2004/108/EC on Electromagnetic Compatibility and EC regulation no. 1935/2004 of 27/10/2004 on materials intended for contact with food.

before using for the first time

- 1 Remove all packaging.
- 2 Wash the parts: see 'care and cleaning'.

key

- ① pusher
- ② hopper
- ③ feed tube
- ④ lid
- ⑤ filter
- ⑥ filter holder
- ⑦ juice outlet
- ⑧ lid with foam separator
- ⑨ juice jug
- ⑩ interlock
- ⑪ On/Off speed control
- ⑫ pulp collector
- ⑬ cord storage (at the back)

using your juicer

assembly and use

- 1 Slide the pulp collector ⑫ into position and fit the filter holder ⑥.
- 2 Fit the filter ⑤ inside the filter holder.
- 3 Fit the lid ④. Then push down firmly on the feed tube and slide the interlock switch ⑩ to lock.

● **Your juicer will not work if the lid is unlocked.**

● **DO NOT operate the juicer without the pulp collector fitted.**

- 4 Place the hopper ② onto the lid.
 - 5 Fit the Juice Jug with the lid fitted under the outlet.
 - 6 Use the recommended usage chart as a guide for juicing different fruits and vegetables.
 - 7 Switch on ⑪ and feed the food items down with the pusher ①.
 - 8 After adding the last piece of food; allow the juicer to continue to run to help clear the juice from the filter/filter holder. The time will vary depending on the fruit type and thickness of the juice extracted.
 - 9 Switch off and wait until the filter has stopped and the final flow of juice has reduced to a few slow drips.
- When juicing hard foods we recommend a maximum quantity of 1Kg with a maximum operating time of 2 minutes. Some very hard foods may make your juicer slow down or stop. If this happens switch off and unblock the filter.
 - Switch off and clear the pulp collector regularly during use.

Always unplug after use.

to take your juicer apart

- Reverse the assembly procedure to take the juicer apart.

note:

- Vitamins degrade - for maximum benefit the sooner you drink your juice, the more vitamins you'll get.
- If you need to store the juice for a few hours put it in the fridge. It will keep better if you add a few drops of lemon juice.
- Don't drink more than three 230mls (8 fl.oz.) glasses of juice a day unless you're used to it.
- Dilute juice for children with an equal amount of water.
- Juice from dark green (broccoli, spinach etc) or dark red (beetroot, red cabbage etc) vegetables is extremely strong, so always dilute it.
- Fruit juice is high in Fructose (fruit sugar), so people with diabetes or low blood sugar should avoid drinking too much.

recommended usage chart

<ul style="list-style-type: none"> ● Wash all fruit and vegetable thoroughly before juicing. ● Use Speed 2 for harder food items. ● Use Speed 1 for softer food items. ● To maximise juice extraction place small quantities at a time in the feed tube and push down slowly. ● For best results fruits such as bananas, mangoes and soft berries are best processed using a blender. 			
Fruit/Vegetable	Preparation	Recommended Speed	Hints & Tips
Apples & Pears	Cut to fit the feed tube	2	To maximise juice extraction hard foods are best juiced when at room temperature.
Root Vegetables - Carrots	Cut to fit the feed tube.	2	
Pineapple	Remove the leaves and stalk by slicing off the top and base. Peel and cut into small pieces	2	
Grapes	Remove stalks.	1	Process small handfuls at a time to maximise juice extraction.
Tomatoes	Cut to fit the feed tube.	1	A thick pulpy juice will be produced rather than a smooth juice.
Stone Fruits – Peaches, Nectarines, Plums	Cut in half and remove stone.	1	–
Mangoes	Remove tough skin and stones.	1	The juice produced will be very thick, so to increase the flow rate best combined with other fruits.
Melons	Remove tough skin.	1	Feed slowly to maximise juice extraction.
Kiwi Fruits	Juice whole.	1	–
Strawberries	Remove leaves Juice whole.	1	Feed small handfuls at a time and juice with other fruits to maximise juice extraction.
Soft berries – Raspberries, Blackberries etc.	Cut to fit the feed tube.	1	
Harder Berries – Blueberries, Cranberries etc.	Cut to fit the feed tube.	1	
Beetroot (Raw)	Remove leaves and peel.	2	Best flavour if peeled and leaves removed.
Leaf Vegetables Spinach, cabbage etc.	Remove hard core. Cut to fit feed tube. Wrap leaves together to form a bundle.	2	Juice extraction will be very low so best juiced with other fruits or vegetables.
Celery	Juice whole.	2	–
Cucumber	Cut to fit the feed tube.	1	Feed slowly to maximise juice extraction.
Citrus Fruit – Oranges, Grapefruits	Peel and remove white pith. Cut to fit feed tube.	1	Removing the pith will produce a better flavour. For best results Kenwood Citrus Juicers are recommended for citrus fruit.

care and cleaning

- Before cleaning, unplug your juicer.
- If the filter is too tight to remove, wait a few minutes until it loosens up.
- Some foods, eg carrot, will discolour the plastic. Rubbing with a cloth dipped in vegetable oil helps remove discolouring.

motor unit

- Wipe with a damp cloth, then dry.
- Do not immerse in water.
- Store excess cord in the storage area at the back of the power unit ⑬.

filter

- Clean using a soft brush.
- **Do not dishwash.**
- **Check the filter regularly for signs of damage. Do not use if the filter is damaged. Refer to “service and customer care”**

other parts

- Wash in hot soapy water, then dry.
- Alternatively they are dishwasher safe and can be washed on the top rack of your dishwasher. Avoid placing items on the bottom rack directly over the heating element. A short low temperature (Maximum 50°C) programme is recommended.

Note: The hopper ② can be inverted for storage on the juicer.

service and customer care

- If the cord is damaged it must, for safety reasons, be replaced by KENWOOD or an authorised KENWOOD repairer.
- **If you experience any problems with the operation of your juicer, before calling for assistance refer to the troubleshooting guide.**

If you need help with:

- using your juicer or
- servicing or repairs (in or out of guarantee)

UK only

- ☎ call Kenwood customer care on **023 9239 2333. Have your model number ready (ie JEP010 and date code (5 digit code ie 13L35) ready.** They are on the underside of your power unit.

spares and attachments

- ☎ call 0844 557 3653.

other countries

- Contact the shop where you bought your juicer.
- Designed and engineered by Kenwood in the UK.
- Made in China.

troubleshooting guide

Problem	Cause and Solution
The juicer will not operate,	<ul style="list-style-type: none">● Juicer not plugged in.● Juicer not assembled correctly. Check that the lid is latched correctly.
Motor appears to slow or stop during use.	<ul style="list-style-type: none">● Refer to the recommended usage chart to check that you are using the correct speed.● If processing hard or fibrous foods, check that the pulp collector is not full and that there is not a build up of pulp on or around the filter. Switch off and unplug, then empty the pulp collector and clean the filter/holder.
Pulp too wet and low juice extraction.	<ul style="list-style-type: none">● Use a slower juicing action and process small quantities at a time.● Clean filter if processing very fibrous foods.● Refer to the recommended usage chart to check that you are using the correct speed.
Juice leaking between lid and pulp collector.	<ul style="list-style-type: none">● Wrong speed used. Refer to the recommended usage chart.● Food pushed down feed tube too fast. Use a slower action.● Check pulp collector is fitted correctly.



**IMPORTANT INFORMATION FOR
CORRECT DISPOSAL OF THE
PRODUCT IN ACCORDANCE
WITH EC DIRECTIVE
2002/96/EC.**

At the end of its working life, the product must not be disposed of as urban waste.

It must be taken to a special local authority differentiated waste collection centre or to a dealer providing this service.

Disposing of a household appliance separately avoids possible negative consequences for the environment and health deriving from inappropriate disposal and enables the constituent materials to be recovered to obtain significant savings in energy and resources. As a reminder of the need to dispose of household appliances separately, the product is marked with a crossed-out wheeled dustbin.

**UK only
guarantee**

If your juicer goes wrong within one year from the date you bought it, we will repair or **where necessary** replace it free of charge provided:

- you have not misused, neglected or damaged it;
- it has not been modified (unless by Kenwood);
- it is not second-hand;
- it has not been used commercially;
- you have not fitted a plug incorrectly; and
- **you supply your receipt to show when you bought it.**

This guarantee does not affect your statutory rights.



HEAD OFFICE: Kenwood Limited, 1-3 Kenwood Business Park, New Lane, Havant, Hampshire PO9 2NH

kenwoodworld.com

KENWOOD
CREATE MORE

124497/1