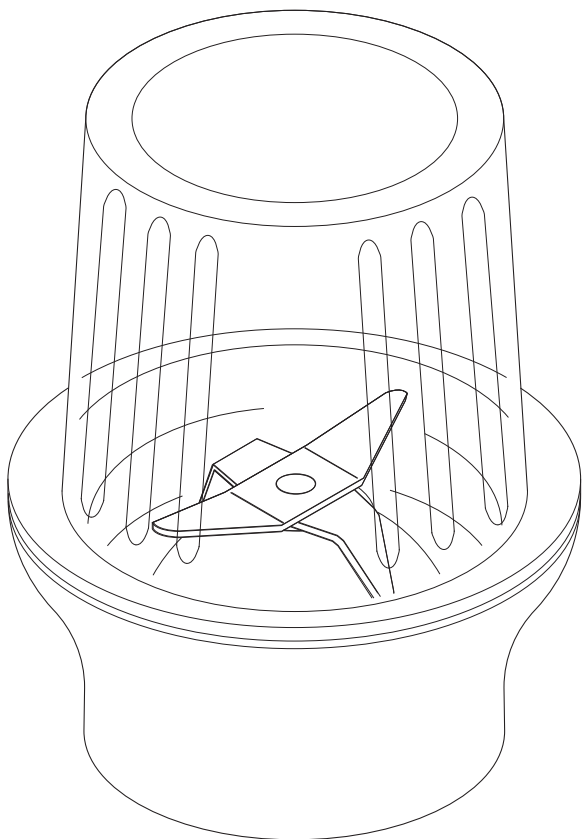
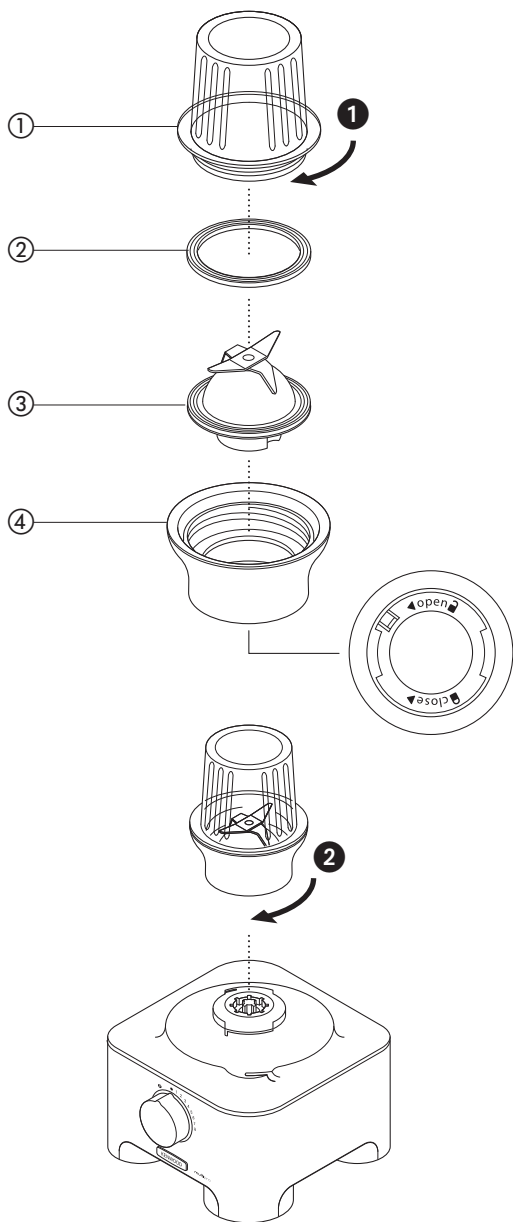


KENWOOD

instructions





The compact chopper/grinder has been designed to be used on the following food processor models:-
Type FDP60
Type FDM78/FDM79

safety



- Read these instructions carefully and retain for future reference.
- Remove all packaging and any labels.
- Never fit the blade unit to your food processor without the jar fitted.
- Never unscrew the jar while the compact chopper/grinder is fitted to your appliance.
- **Do not touch the sharp blades**
 - Keep the blade unit away from children.
- Never remove the compact chopper/grinder until the blades have completely stopped.
- To ensure the long life of your compact chopper/grinder, do not run it continuously for longer than 30 seconds. Switch off as soon as you have got the right consistency.
- The appliance will not work if the compact chopper/grinder is incorrectly fitted.
- Do not process turmeric root in the compact chopper/grinder as it is too hard.
- The processing of spices is not recommended as they may damage the plastic parts.
- Refer to your main instruction manual for additional safety warnings.

key

- ① glass jar
- ② sealing ring
- ③ blade unit
- ④ base

to use your compact chopper/grinder

Use the compact chopper/grinder for milling herbs, nuts and coffee beans.

- 1 Put the ingredients into the jar ①.
- 2 Fit the sealing ring ② into the blade unit ③.
- 3 Then clip the blade unit into the base ④.
- 4 Turn the blade assembly upside down. Lower it into the jar, blades down.
- 5 Screw the blade unit onto the jar until finger tight ①. Refer to the graphics on the underside of the blade unit as follows:
 -  unlocked position
 -  locked position
- 6 Place the compact chopper/grinder onto the power unit and turn clockwise ② to lock .
- 7 Switch onto maximum speed or use the pulse control.

honey and nut spread recipe

340g clear honey at room temperature
20g chopped almonds

- 1 Place the ingredients into the compact chopper/grinder in the above order.
- 2 Fit the compact chopper/grinder to the power unit and allow the ingredients to settle to the bottom before processing.
- 3 Blend together using the pulse for 5seconds.
- 4 Use as required.

care & cleaning

- 1 Empty the jar before unscrewing it from the blade unit.
- 2 Wash the jar by hand
- 3 Then remove the blade unit from the base by pushing up from underneath.
- 4 Wash the jar by hand.
- 5 **Don't touch the sharp blades** – brush them clean using hot soapy water, then rinse thoroughly under the tap. Don't immerse the blade unit in water.
- 6 Leave to dry upside down.



IMPORTANT INFORMATION FOR CORRECT DISPOSAL OF THE PRODUCT IN ACCORDANCE WITH EC DIRECTIVE 2002/96/EC.

At the end of its working life, the product must not be disposed of as urban waste. It must be taken to a special local authority differentiated waste collection centre or to a dealer providing this service.

Disposing of a household appliance separately avoids possible negative consequences for the environment and health deriving from inappropriate disposal and enables the constituent materials to be recovered to obtain significant savings in energy and resources. As a reminder of the need to dispose of household appliances separately, the product is marked with a crossed-out wheeled dustbin.

service & customer care

UK

If you need help with:

- using your appliance or
- servicing or repairs (in or out of guarantee)

☎ call Kenwood customer care on **023 9239 2333. Have your model number ready.**

● **spares and attachments**

☎ call 0844 557 3653.

other countries

- Contact the shop where you bought your appliance.
- Designed and engineered by Kenwood in the UK.
- Made in China.

🇬🇧 designed & engineered by **KENWOOD** in the UK

made in China



HEAD OFFICE: Kenwood Limited, 1-3 Kenwood Business Park, New Lane, Havant, Hampshire PO9 2NH

kenwoodworld.com

KENWOOD

CREATE MORE

124816/2