

EASY
HOME®



USER GUIDE

ROBOT VACUUM CLEANER



NOW YOU HAVE PURCHASED AN EASY HOME® PRODUCT
YOU CAN REST ASSURED IN THE KNOWLEDGE THAT AS
WELL AS YOUR MANUFACTURER'S WARRANTY YOU HAVE
THE ADDED PEACE OF MIND OF DEDICATED HELPLINES
AND WEB SUPPORT

AFTER SALES SUPPORT

☎ 08452 100888
☎ 00353 (0) 579324910

💻 www.aldi.com

MODEL: 2711, 03/14, 59600

3

YEAR WARRANTY

ACCESSORIES

Index

03	Introduction
04	Important safeguards
08	Description of the appliance
10	Instructions for use
18	How to programme daily cleaning
19	Cleaning and maintenance
21	Storing the appliance and disposal
22	Troubleshooting
21	Characteristics

Introduction

Congratulations!

You have made an excellent choice with the purchase of this quality EASY HOME® product.

By doing so you now have the assurance and peace of mind which comes from purchasing a product that has been manufactured to the highest standards of performance and safety, supported by the high quality standards of ALDI.

We want you to be completely satisfied with your purchase so this EASY HOME® product is backed by a comprehensive manufacturer's 3 year warranty and an outstanding after sales service through our dedicated Helpline.

We hope you will enjoy using your purchase for many years to come.

If you require technical support or in the unlikely event that your purchase is faulty please telephone our Helpline for immediate assistance. Faulty product claims made within the 3 year warranty period will be repaired or replaced free of charge provided that you have satisfactory proof of purchase (keep your till receipt safe!). This does not affect your statutory rights. However, be aware that the warranty will become null and void if the product is found to have been deliberately damaged, misused or disassembled.

The instruction manual is also available from our customer assistance service, in PDF format.

Important safeguards

SYMBOLS

The information in this manual is labelled as follows:



DANGER for children



DANGER from electricity



DANGER from other causes



IMPORTANT possible damage to materials

READ THESE INSTRUCTIONS BEFORE USE.

KEEP THIS MANUAL AND CONSIGN IT TO THE NEW USER IF THE APPLIANCE IS SOLD ON.

This appliance conforms to the Directives 2006/95/EC and EMC 2004/108/EC.



— To dispose of product correctly according to European Directive 2009/96/CE, please refer to and read the provided leaflet enclosed with the product.



DANGER to children

- Children over the age of 8 years are permitted to use this appliance, as are persons with reduced physical, sensory or mental capabilities, or without experience or skills, as long as they are suitably supervised or trained in the safe use of the appliance, and as a result, aware of the risks involved.
- Children must not play with the appliance.
- Cleaning and maintenance cannot be performed by children without adult supervision.
- Never allow the cord to dangle in places where it may be grabbed by a child.
- Inform everyone in the house that the robot vacuum cleaner is cleaning. Caution should be used if small children and animals are in the house.
- In the event that you decide to dispose of the appliance, we advise you to make it inop-



Important safeguards

erative by cutting off the power cord. We also recommend that any parts that could be dangerous be rendered harmless, especially for children, who may play with the appliance or its parts.

- Packaging must never be left within the reach of children since it is potentially dangerous.



DANGER from electricity

- Make sure that the voltage on the appliance rating plate corresponds to that of the mains electricity.
- Only use the charging station provided by Aldi to charge the robot vacuum cleaner.
- Always make sure that your hands are thoroughly dry before using or adjusting the switches on the appliance, or before touching the power plug or power connections.



DANGER from other causes

- Never leave the appliance exposed to the elements (rain, sun, etc....).
- Never place the appliance on or close to sources of heat.
- Never place the appliance unit, charging station, plug or power cord in water or other liquids; wipe them clean with a damp cloth.
- If the appliance is not operating, remove it from the charging base, switch off the power, and unplug the appliance from the mains socket before inserting or removing any parts or cleaning the appliance.
- Never use the appliance or charging station if the power cord or plug are damaged or if the appliance is faulty; all repairs, including the replacement of the power cord, must be carried out by an Aldi assistance service or by a service engineer approved by Aldi, so as to eliminate any risks.
- If the power feeder or cable needs to be replaced and/or serviced, always contact an Aldi assistance service or a service engineer approved by Aldi, so as to eliminate any risks.
- If any fluid should leak from the batteries, do not use the appliance: take it to the nearest assistance service for battery replacement.
- This appliance operated using rechargeable batteries and therefore, at the end of its useful

Important safeguards

life, it must not be disposed of with other household waste. It can be taken to a council recycling centre or to stores or retailers offering this type of service. Separate disposal of electric appliances means it is possible to avoid some of the negative effects on health and the environment caused by incorrect disposal and it also makes it possible to recover the materials from which it is made and this helps to save energy and resources. To point out the requirement to dispose of electrical appliances properly and separately, this product is marked with the crossed out wheelie bin symbol. Never throw batteries into fire.

- This appliance is designed for HOME USE ONLY and may not be used for commercial or industrial purposes.
- Only charge and use the appliance in closed environments.



IMPORTANT possible damage to materials

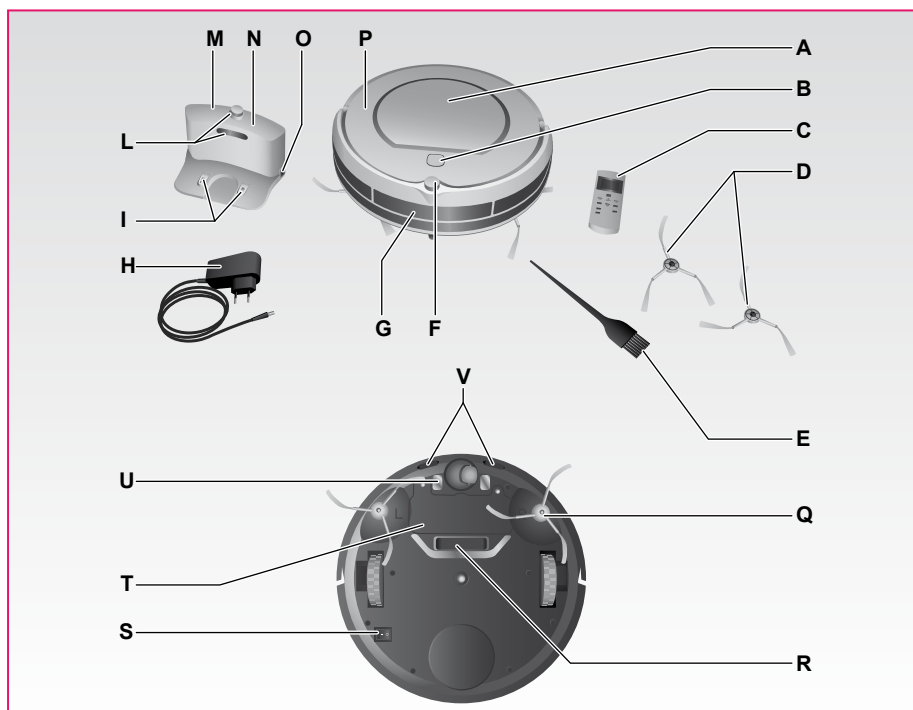
- Never clean up hot ash, large pieces of glass, plaster debris, sharp or pointed objects, or liquids.
- Do not allow clothes or body parts to become caught up in the robot vacuum cleaner's wheels or rotary brushes.
- The appliance must not come into contact with cigarettes, lighters, matches or other flammable items.
- Never place items on top of the robot vacuum cleaner, never sit on the appliance.
- Before use, pick up items from the floor (remove fragile objects and wires, clothing, paper, curtains and any fringes on rugs, as these may become caught up in the appliance and cause items to fall from tables and/or shelves).
- The robot vacuum cleaner must not be used without its filters, or if the filters are broken or damaged in any way.
- Never use to clean on wet surfaces.
- Never clean up liquids or residues of bleach, paint or other chemicals or wet substances.
- Always disconnect the robot vacuum cleaner or the charging station from the mains power if it is not to be used for any length of time or when transporting it.



Important safeguards

- Do not threaten the safety of the appliance by using parts that are not original or which have not been approved by the manufacturer.
- To unplug the appliance, grip the plug and remove it directly from the power socket. Never pull the power cord to unplug the appliance.
- In case of using extension leads, these must be suitable for the appliance power to avoid danger to the operator and for the safety of the environment in which the appliance is being used. Extension leads, if not suitable, can cause operating anomalies.
- Any changes to this product that have not been expressly authorised by the manufacturer may lead to the user's guarantee being rendered null and void.

Description of the appliance

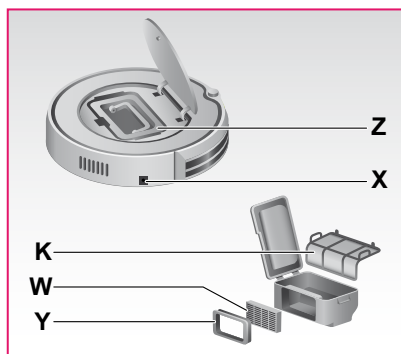


DESCRIPTION OF THE APPLIANCE

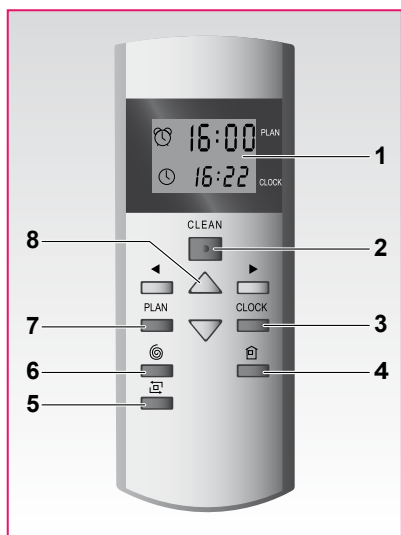
- A Dust container lid
- B "CLEAN" on button with lighting and sound warning
- C Remote control
- D Spare brush set
- E Cleaning brush
- F Infrared signal receiver
- G Crashproof sensor beam for tall obstacles
- H Power cord
- I Contact points for charging
- L IR signal transmitters

- M Charging station ("HOME BASE")
- N Power light
- O Socket for power cord
- P Appliance body
- Q Rotary brushes
- R Suction opening
- S ON/OFF switch
- T Battery cover
- U Contact points for charging station
- V Crashproof sensor beam for low obstacles and to prevent falling

Description of the appliance



- Z Dirt container
- X Socket for power cord
- Y Hepa filter support
- W Hepa filter (1 extra)
- K Main filter



- 1 Display
- 2 CLEAN button
- 3 CLOCK button
- 4 Return to charging station button
- 5 Perimeter clean button
- 6 Turbo clean button
- 7 PLAN button
- 8 Direction buttons

Instructions for use

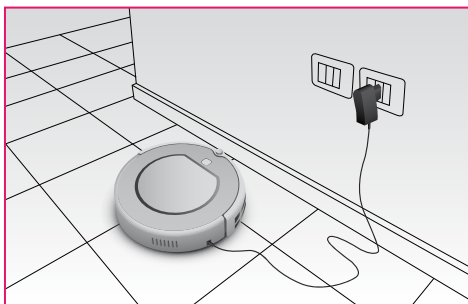
- **PLACE THE CHARGING STATION (M)** on a hard surface and against a wall with no obstacles within one metre on each side and for about two metres to the front. Plug the power cord (H) into the socket (O) in the charging station and then connect the battery charger to the main power. The power light (N) in the charging station will switch on to show that it is correctly connected.
- **TURN THE SWITCH (S)** on the base of the appliance to ON, to charge up the appliance for operation. If the appliance has been switched on, the "CLEAN" button (B) will switch on for 15 seconds before entering "Pause" mode (see the section about operating modes).
- **CHARGE THE BATTERY:**

The robot vacuum cleaner is powered by a rechargeable Ni-Mh battery. The charge modes are:

a) Directly via adaptor (H)

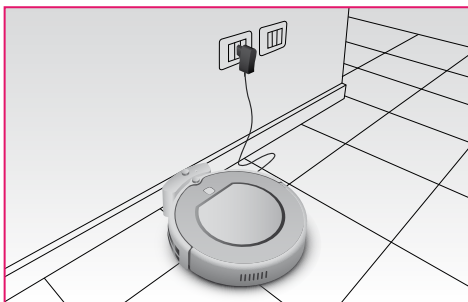
Plug the charger (H) directly into the socket (X) in the appliance body (P).

NEVER USE THIS CHARGING METHOD WHEN THE ROBOT VACUUM CLEANER HAS BEEN SET TO SWITCH ON LATER FOR CLEANING (SEE THE "PROGRAMMING" CHAPTER), AS THIS COULD CAUSE DAMAGE TO THE POWER CORD AND TO THE APPLIANCE AT THE START OF THE CLEANING CYCLE.



b) Via charging station (M)

After installing the "Home Base" correctly, place the robot vacuum cleaner on this charging station, making sure that the charge poles (U) meet with the charge contacts (I) in the base. The "Home Base" charge contacts are low voltage and do not constitute any type of hazard.

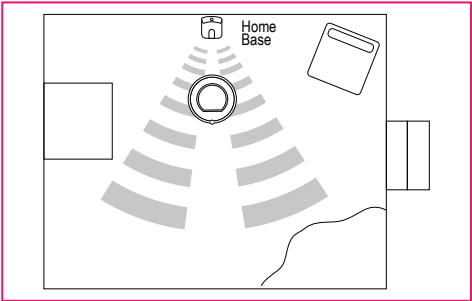


Instructions for use

c) Auto-charge:

The robot vacuum cleaner will automatically return to the “Home Base” when the battery charge is low. To do this, it is necessary for the IR signal to reach it from the “Home Base” which means that the base must be in the same room as the one being cleaned.

If the robot vacuum cleaner is unable to return to the charging station at its first attempt, it will continue to try to do so until it is correctly positioned.



IMPORTANT: THE ROBOT VACUUM CLEANER CANNOT RETURN TO THE CHARGING STATION IF THE STATION IS NOT CONNECTED TO THE MAINS POWER; IN THIS CASE, THE SUCTION FUNCTION WILL BE REDUCED UNTIL IT RUNS OUT AND THE ROBOT VACUUM CLEANER WILL SWITCH OFF.

IMPORTANT: IF THE ROBOT VACUUM CLEANER IS IN A DIFFERENT ROOM TO THE CHARGING STATION, IT WILL NOT BE ABLE TO PICK UP THE RECALL SIGNAL.

IMPORTANT: MAKE SURE THAT THE POWER CORD DOES NOT GET IN THE WAY OF THE ROBOT VACUUM CLEANER, AS THERE IS A RISK OF BLOCKING THE ROTARY BRUSHES.

NOTES ABOUT CHARGING AND AUTONOMY

IMPORTANT: BEFORE USING FOR THE FIRST TIME, YOU NEED TO CHARGE THE APPLIANCE FOR AT LEAST 12 HOURS. ANYTHING LESS THAN THIS COULD AFFECT THE LIFE OF THE BATTERIES.

Subsequent charges need a maximum time of 3.5 hours to guarantee a full 1.5 hour cleaning cycle.

First charge time	12 h
Subsequent charge times	3,5 h
Autonomous operating time	1,5 h (including return to charging station)

Instructions for use

If used correctly, the battery has a useful lifetime of hundreds of cleaning cycles.

To extend battery life as much as possible, keeping operating autonomy at the same level, you should follow some important rules:

- use the robot vacuum cleaner frequently;
- recharge the battery completely before every cleaning cycle;
- always keep the robot vacuum cleaner connected to the power supply;
- if you do not intend to use the robot vacuum cleaner for a certain length of time, charge the batteries completely, switch off the appliance at the switch (S), remove the batteries and store them in a cool, dry place;
- after a long period of disuse, charge the batteries fully before use.

IMPORTANT: DO NOT LEAVE THE BATTERIES FLAT FOR A LONG PERIOD OF TIME, SINCE THEY COULD BECOME DAMAGED.

IMPORTANT: DO NOT CHARGE BATTERIES AT TEMPERATURES BELOW 4°C OR ABOVE 40°C.

Instructions for use

CHECK THE CONDITION OF THE ROBOT VACUUM CLEANER BEFORE STARTING OR STOPPING OPERATION.

Before sending any command to the robot vacuum cleaner, make sure that the switch (S) is set to ON and check that the status of the light on the "CLEAN" button on the appliance body:

CLEAN button light	the robot vacuum cleaner status	the robot vacuum cleaner status
Fixed orange	Battery flat	Off: proceed to charge.
	Return to charging station	Moving, in search of the charging station.
Flashing orange	Charging	Charging: wait for charging to complete.
Fixed green	Charging finished	Ready to use.
Flashing green	"Pause" mode	Pause, waiting for commands.
Fixed or flashing green	"Clean" mode	Moving, cleaning in progress.
Off	"Sleeping" mode	Idle and needing to be "woken" before it can be started.
Red	Error	There is a problem (see errors table).
Flashing red and acoustic signal	Switch (S) set to OFF	Completely switched off: no charging is possible, press the switch (S).

SELECT THE OPERATING MODE

It is possible to switch the robot vacuum cleaner on or off, using the "CLEAN" button (B) on the appliance body or using the equivalent "CLEAN" button on the remote control (C).

Using the "CLEAN" button it is possible to pass from one operating mode to another – from clean, to pause to sleep.

Instructions for use

The light and status of the robot vacuum cleaner show the current mode:

Operating mode	CLEAN button light	State of the robot vacuum cleaner
"Pause" mode	Flashing green	Pause, waiting for commands.
"Cleaning" mode	Fixed or flashing green	Moving, cleaning in progress.
"Sleeping" mode	Off	Idle and needing to be "woken" before it can be started.

- a) If the robot vacuum cleaner is in "pause" mode (not moving and the green light is flashing), this means it is paused and is waiting for commands:
- to start a cleaning cycle, press the "CLEAN" button once;
 - to set it from the "pause" mode to the "sleeping" mode, press and hold down the "CLEAN" button for 3 seconds or wait 15 seconds, after which time the flashing light will switch off.
- b) If the robot vacuum cleaner is in "sleeping" mode (not moving and the green light is off), this means it is "idle" and to start a cleaning cycle, the "CLEAN" button must be pressed twice:
- once to "wake up" the robot vacuum cleaner and set it to "pause" mode: the "CLEAN" button will go back to flashing green;
 - a second time to start cleaning, setting it to "cleaning" mode: the "CLEAN" button will light up green and fixed.
- c) If the robot vacuum cleaner is in "cleaning" mode (it is cleaning and the green light is fixed), it can be stopped by pressing the "CLEAN" button once:
- by simply pressing once to set it to "pause" mode, waiting 15 seconds for it to enter "sleeping" mode automatically;
 - by pressing and holding down for 3 seconds to set it directly to "sleeping" mode.

Instructions for use

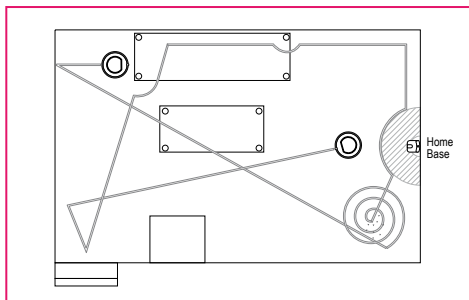
SELECTING CLEANING MODE

1) AUTOMATIC cleaning:

Pressing the "CLEAN" button on the appliance body or the remote control will start the "cleaning" mode. The robot vacuum cleaner will clean the room on its own, alternately and randomly applying the following:

- spiral movements
- linear perimeter movements
- diagonal linear movements

It will automatically adapt its route according to the obstacles it meets on the floor:



IMPORTANT: FOR THE BEST CLEANING RESULTS AND TO MAKE SURE THAT THE ROBOT VACUUM CLEANER CAN COVER THE ENTIRE SURFACE OF THE ROOM WITHOUT LEAVING ANY AREA UNCOVERED AND IN THE SHORTEST POSSIBLE AMOUNT OF TIME, IT IS NECESSARY TO REMOVE AS MANY OBSTRUCTIONS FROM THE FLOOR AS POSSIBLE.

IMPORTANT: TO PREVENT THE ROBOT VACUUM CLEANER FROM GETTING STUCK, REMOVE OR LIFT ANY WIRES AND POWER CORDS THAT COULD BECOME WRAPPED AROUND THE ROTARY BRUSHES AND CAUSE ITEMS TO FALL FROM FURNITURE OR BREAK OR DAMAGE THE ROBOT VACUUM CLEANER.

IMPORTANT: WHEN USING THE APPLIANCE IN AREAS WHERE THERE IS A GOOD DEAL OF DIRECT SUNLIGHT, WE RECOMMEND PARTLY CLOSING THE CURTAINS TO PREVENT THE LIGHT FROM ADVERSELY AFFECTING THE DIRECTION AND PATH OF THE ROBOT.

2) Remote control cleaning:

The remote control can be used to select single operating modes: Turbo, perimeter and return to charging station.

IMPORTANT: IF THE ROBOT VACUUM CLEANER IS MOVING, TO SELECT THE SPECIFIC FUNCTION FROM THE REMOTE CONTROL, IT IS NECESSARY TO SET IT TO "PAUSE" USING THE "CLEAN" BUTTON AND THEN TO SELECT THE FUNCTION REQUIRED.

Instructions for use

a) TURBO cleaning:

If an area of the floor is particularly dirty, it is possible to select the "Turbo" cleaning function by pressing the "🌀" button on the remote control; in this way, the robot vacuum cleaner will begin a faster spiral movement with greater suction power, concentrating on the area to be cleaned.

The Turbo function will stop automatically once the area has been cleaned or it can be interrupted by pressing the CLEAN button.

b) Perimeter cleaning:

Place the robot vacuum cleaner close to an edge (e.g., wall, furniture unit) and press the "🏠" button. the robot vacuum cleaner will move along the perimeter.

IMPORTANT: IF PLACED IN THE CENTRE OF THE ROOM, THE ROBOT VACUUM CLEANER MIGHT NOT BE ABLE TO IDENTIFY AND REACH THE PERIMETER TO BE CLEANED.

It is possible to stop perimeter cleaning by pressing the "CLEAN" button, to set the appliance back to "pause" and/or "sleeping" mode. Perimeter cleaning will stop automatically when the robot vacuum cleaner intercepts the charging station or once the battery is flat.

c) Linear cleaning:

Pressing the special buttons (8) on the remote control, it is possible to direct the robot vacuum cleaner while it is moving.

IMPORTANT: IF MANUALLY DIRECTED TOWARDS STEPS, THE ROBOT MAY FALL AS THE MANUAL CONTROL PREVAILS OVER THE STAIR SENSOR.

IMPORTANT: IF MANUALLY DIRECTED, MAKE SURE THAT THE STAIR SENSOR (V) IS POSITIONED AT THE FRONT OF THE BASE.

d) Return to the charging station:

By pressing the "🏠" button, it is possible to return the robot vacuum cleaner to the charging station when required. The same indications apply as for the autocharge function:

- the robot vacuum cleaner must be able to intercept the IR signal from the charging station which must therefore be in the same room as is being cleaned;
- if the robot vacuum cleaner is not able to return to the base at the first attempt, it will continue to try until it is correctly positioned.

Instructions for use

IMPORTANT: IF THE ROBOT VACUUM CLEANER IS UNABLE TO RETURN TO THE CHARGING STATION AT ITS FIRST ATTEMPT, IT WILL CONTINUE TO TRY TO DO SO UNTIL IT IS CORRECTLY POSITIONED.

IMPORTANT: THE ROBOT VACUUM CLEANER CANNOT RETURN TO THE CHARGING STATION IF THE STATION IS NOT CONNECTED TO THE MAINS POWER; IN THIS CASE, THE SUCTION FUNCTION WILL BE REDUCED UNTIL IT RUNS OUT AND THE ROBOT VACUUM CLEANER WILL SWITCH OFF.

IMPORTANT: DURING THE RETURN TO THE CHARGING STATION, THE SUCTION FUNCTION IS SUSPENDED AND THEREFORE, THE NOISE LEVEL WILL BE LOWER.

HOW THE ROBOT VACUUM CLEANER COMPLETES A CLEANING CYCLE

The coverage time for a room may vary according to floor type and to the number of obstructions the robot vacuum cleaner encounters as well as the possible differences in height on the floor.

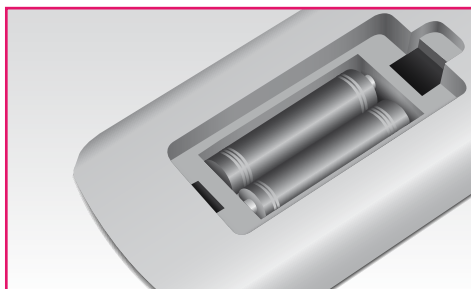
Thanks to its front anti-collision sensors, the robot vacuum cleaner is able to intercept surfaces (walls, furniture...) avoiding collisions with them. However, if the obstruction consists of corners or tubular parts of furnishings, then a gentle impact may be possible. Special anti-fall sensors on its base mean that the robot vacuum cleaner is able to recognise differences in height and therefore, to avoid falling from tops or stairs. The robot vacuum cleaner is also able to overcome differences in level such as thresholds or rugs and to move away from obstacles (pipes, floor lamps, etc.) of no higher than 1 cm.

IMPORTANT: WHEN CLEANING CARPETS OR RUGS, DO NOT ALLOW THE ROBOT VACUUM CLEANER TO COME INTO CONTACT WITH FRINGES AND DO NOT CLEAN SHAG PILE CARPETS, AS THE FIBRES AND FRINGES MAY BECOME CAUGHT UP AROUND THE ROTARY BRUSHES.

INSTALLATION OF REMOTE CONTROL BATTERIES

Insert the two batteries (Type AAA or R03) in the slot on the back of remote control, after raised the lid.

Fit the poles with the indication marks (+) and (-). Then, close the lid by a slight pressure.



How to programme daily cleaning

HOW TO PROGRAMME DAILY CLEANING

Use the remote control to set the start and finish times for the robot vacuum cleaner to clean on a daily basis.

IMPORTANT: MAKE SURE THAT THE REMOTE CONTROL HAS BEEN FITTED WITH BATTERIES.

To set the operating times, it is first necessary to set the clock.

How to set the clock

- Point the remote control towards the robot vacuum cleaner.
- Press the "CLOCK" button to select the hour and then the minutes, using the direction keys.
- Press the "CLOCK" button to save the time setting.

IMPORTANT: A SOUND SIGNAL WILL BE EMITTED TO SHOW THAT THE TIME HAS BEEN SAVED.

IF NO SOUND IS HEARD, RESET THE CLOCK AND SAVE AGAIN.

- To delete the time, set it to 00:00 and save.

How to set delayed cleaning

- Point the remote control towards the robot vacuum cleaner.
- Press the "PLAN" button to set the hour and then the minutes, using the direction keys for the time at which the cleaning cycle needs to start.
- Once the time is set, press the "PLAN" button to save the cleaning programme settings.

IMPORTANT: A SOUND SIGNAL WILL BE EMITTED TO SHOW THAT THE TIME HAS BEEN SAVED.

IF NO SOUND IS HEARD, RE-ENTER THE SETTINGS AND SAVE AGAIN.

- To delete the programme time, set it to 00:00 and save.

At the selected time, the robot vacuum cleaner will move from its charging station to start the cleaning cycle and then return to the station when the cleaning is complete or if the batteries are almost flat. Once it has begun to return to the station, the robot vacuum cleaner may take up to 30 minutes to intercept the signal and reposition itself on the "Home Base".

IMPORTANT: THE ROBOT VACUUM CLEANER WILL START UP AT THE SET TIME EVERY DAY, AS LONG AS THE BUTTON (S) ON THE BASE HAS NOT BEEN SET TO OFF, AS THIS WILL DELETE THE TIME AND PROGRAMMED SETTINGS.

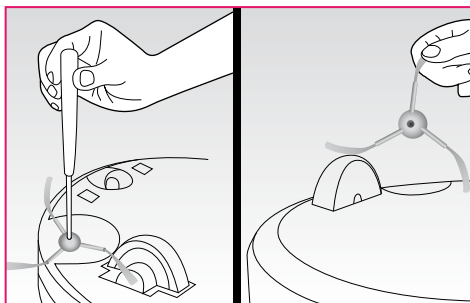
Cleaning and maintenance

CLEANING AND MAINTENANCE

For the correct maintenance of the robot vacuum cleaner, follow the rules below:

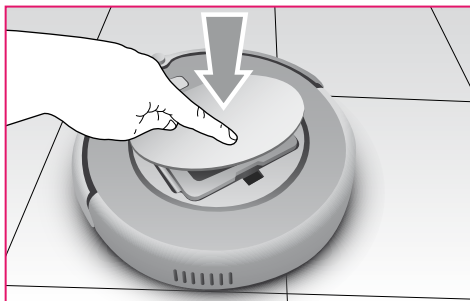
Clean the side brushes on a regular basis and replace them if damaged.

- Remove the screw in the centre of each brush support.
- Remove the brushes and replace them, making sure that the marks "L" (left) and "R" (right) meet with the same marks on the appliance base.

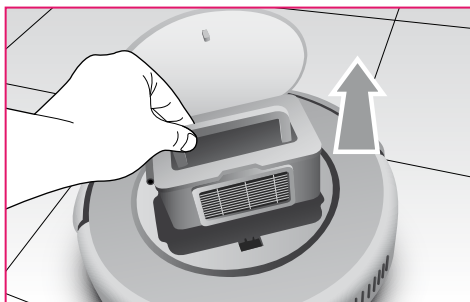


Clean the dust container after each use:

- Lift the lid (A) by pressing gently yet firmly on the logo "push": the lid will open slowly.

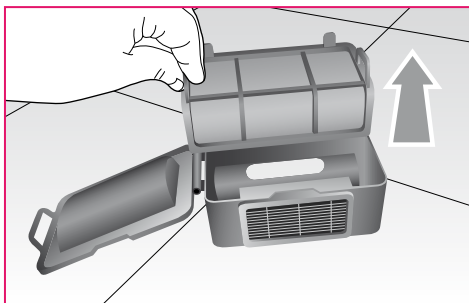


- Take out the container by its handle.



Cleaning and maintenance

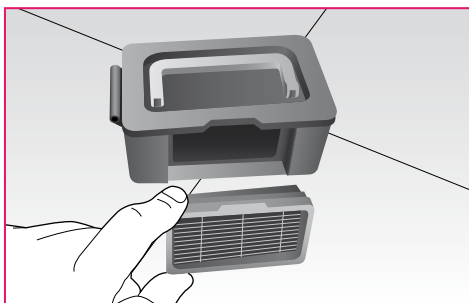
- Open the container using the special tab on the side and remove the main filter (K); clean it with the special brush (E) provided and if necessary, wash it.



- Remove the HEPA filter using the special tab and clean it with the brush.

IMPORTANT: WASH THE HEPA FILTER EVERY 15-30 DAYS AND REPLACE IT EVERY 6 MONTHS.

- Empty the container and clean it with the brush and/or wash it.
- Dry all the parts and then re-fit them, taking care to insert the Hepa filter in its special housing.



IMPORTANT: ALWAYS MAKE SURE THAT NO ITEMS OR BUILD UP OF DIRT HAS BLOCKED THE SUCTION OPENING, REMOVING THEM IF NECESSARY.

- Wipe the robot vacuum cleaner clean with a soft, dry cloth, taking special care in the area of the sensor beam (G) and the points that come in contact with the charging station.
- Always make sure that there is no dirt blocking the wheels or their housing.

Cleaning and maintenance

Storing the appliance

Store the appliance in a clean, dry place, out of reach of children.

Disposal

Packaging

The product is packaged using recyclable materials, which must be disposed of in the proper containers.

Electronic equipment



Do not dispose of electronic equipment in normal household waste.

Compliant with EU directive 2002/96/EC, at the end of its useful life, the appliance must be disposed of in a suitable manner. This will make it possible to re-use recyclable material, limiting the impact on the environment.

Dispose of the appliance at a collection centre for electrical waste or a recycling centre.

For more information, please contact your local disposal company or local authority.

Troubleshooting

Sound signal	Cause	Solution
<ul style="list-style-type: none">•	The wheels or side brushes will not work.	Check and clean the wheels and side brushes.
<ul style="list-style-type: none">• •	Sensor error	Clean the sensors (G-V), and make sure there are no foreign objects on them.
<ul style="list-style-type: none">• • •	The robot vacuum cleaner is blocked.	Move the robot vacuum cleaner and restart it.
Red light and <ul style="list-style-type: none">• •	The robot vacuum cleaner is on the charging station and when the switch (S) is set to "OFF", the robot vacuum cleaner does not charge.	Switch on the robot vacuum cleaner with the switch (S) to allow it to charge.

Note: if these errors continue, contact the Aldi assistance service.

Characteristics

Classification	Item	Detail
Mechanical specifications	Diameter	340 mm
	Height	90 mm
	Weight	3,0 Kg
Electrical specifications	Power voltage	14,4 V
	Battery specifications	Ni-MH 2000 mAH
Cleaning specifications	Dust container capacity	0,5 l
	Charge type	Automatic / Manual charge
	Cleaning mode	Automatic, Turbo, Perimeter, Daily schedule
	Charge time	About 200 min
	Cleaning time	90 min at maximum
Main body button type		Hard button
Remote control batteries		2x1,5V - Type AAA or R03

ROBOT VACUUM CLEANER

Your details:

Name _____

Address _____



E mail _____

Date of purchase* _____

* We recommend you keep the receipt with this warranty card

Location of purchase _____

Description of malfunction:

Return your completed warranty card to:

GB
Home-tek Europe Limited
Roe Head House
Far Common Road
Mirfield
West Yorkshire
WF14 0DQ
England
HELPLINE 08452-100888

IRE
Kenny Distributors
Sragh Business Park
Tullamore Co. Offaly
Ireland
HELPLINE 00353(0)579324910

AFTER SALES SUPPORT



GB 08452 100888



00353 (0) 579324910



www.aldi.com

MODEL: 2711, 03/14, 59600

3

YEAR WARRANTY

