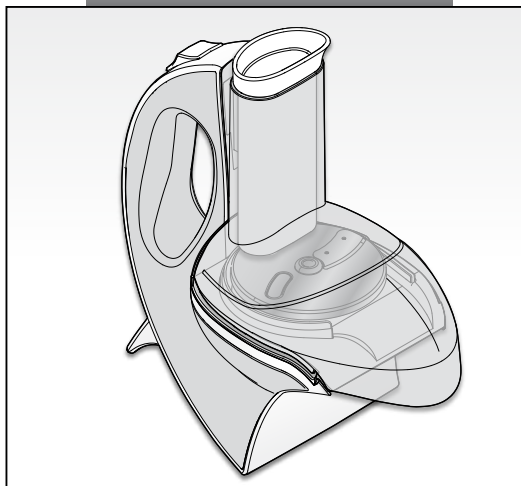




Mod. 1789



saladino cordless

Ariete

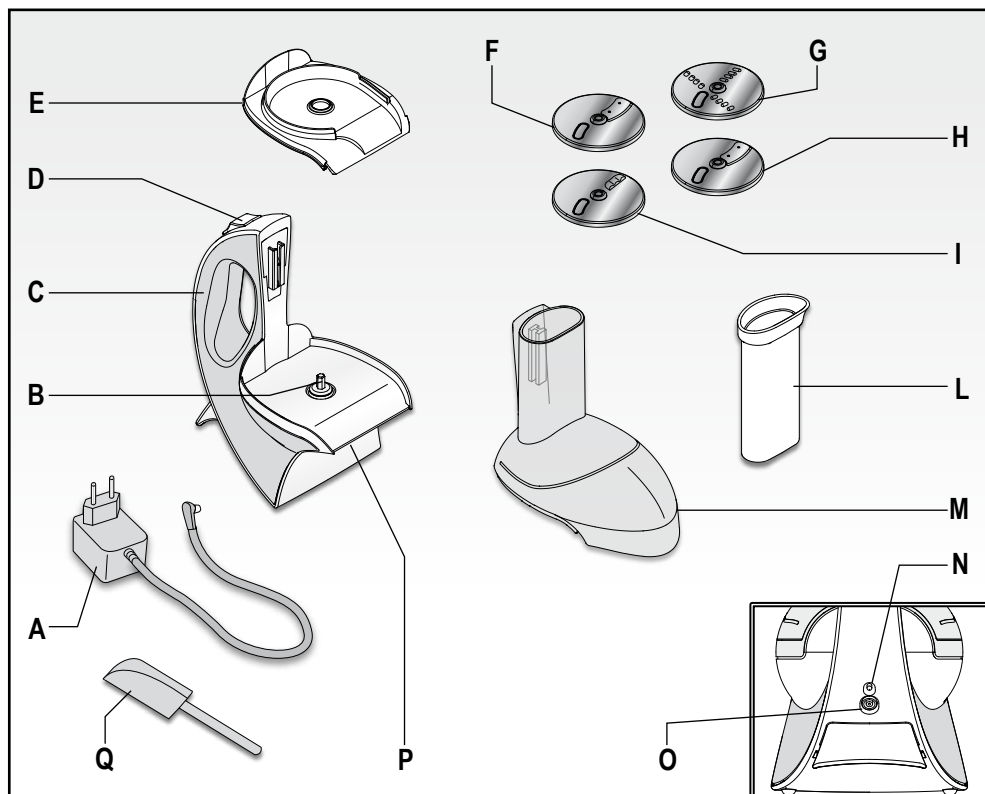


Fig. 1

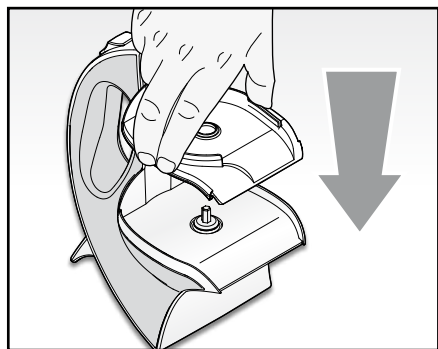


Fig. 2

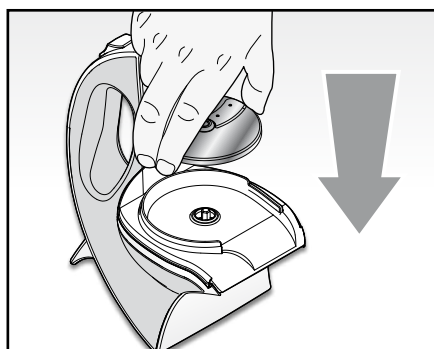


Fig. 3

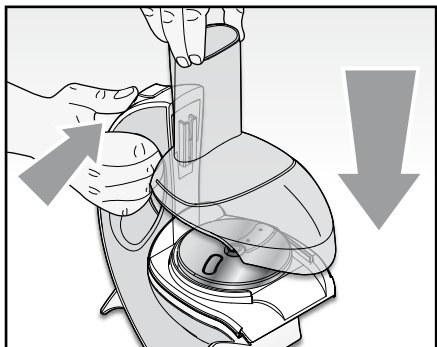


Fig. 4

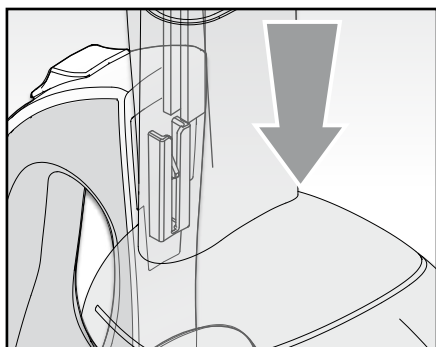


Fig. 5

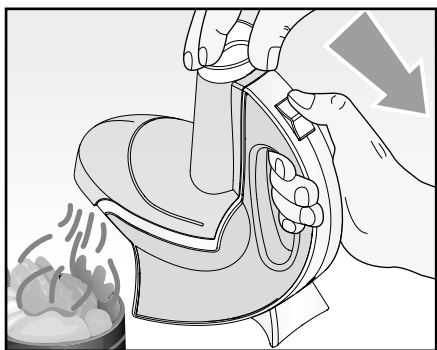


Fig. 6

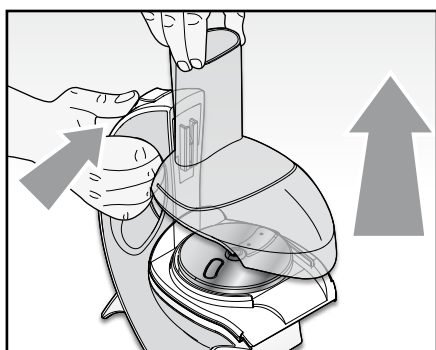




Fig. 7

IMPORTANT SAFEGUARDS

READ THESE INSTRUCTIONS BEFORE USE.

The necessary precautions must be taken when using electrical appliances, and these include the following:

- 1 Make sure that the voltage on the appliance rating plate corresponds to that of the mains electricity.
- 2 Never place the appliance on or close to sources of heat.
- 3 Never leave the appliance exposed to the elements (rain, sun, etc....).
- 4 Make sure that the power cord does not come into contact with hot surfaces.
- 5 This appliance is not intended for use by persons (including children) with reduced physical, sensory or mental capabilities, or lack of experience and knowledge, unless they have been given supervision or instruction concerning use of the appliance by a person responsible for their safety.
- 6 Children should be supervised to ensure that they do not play with the appliance.
- 7 NEVER PLACE THE APPLIANCE BODY, PLUG OR POWER CORD IN WATER OR OTHER LIQUIDS; ALWAYS WIPE CLEAN WITH A DAMP CLOTH.
- 8 Always make sure that your hands are thoroughly dry before using or adjusting the switches on the appliance, or before touching the power plug or power connections.
- 9 Wash all attachments with care before use.
- 10 Never use the appliance if the discs or blades are damaged.
- 11 Never operate the appliance when empty.
- 12  **To prevent accidents or damage to the appliance, always keep hands and cooking utensils well away from moving blades or discs.**
- 13  **Blades and discs are very sharp and need to be handled with extreme care.**
- 14 Make sure that the disc support has been fitted correctly with the required disc on the attachment, and that the funnel has been inserted before starting the appliance.
- 15 Never insert foods by pressing them down with your hands; always use the special food press.
- 16 To avoid overheating the appliance, ALWAYS ABIDE BY THE 60 SECONDS MAXIMUM TIME FOR CONTINUOUS USE; always wait for the appliance to cool down between one pause and another before using it again.
- 17 Never use the appliance to chop excessively hard foods (e.g., ice cubes).
- 18 This appliance must only be used to cut fruit and/or vegetables.
- 19 To avoid any risks, always contact our Customer Support Centre or similarly

- qualified person when replacing and/or servicing the power base or power cord.
- 20 If any fluid should leak from the batteries, do not use the appliance; contact our Customer Support Centre on 1300 886 649 or info@tempo.org to have the batteries replaced.
- 21 This appliance operates using NiMH rechargeable batteries and therefore, at the end of its useful life, do not dispose of it in general household waste. Take it to a special municipal recycling facility or to retailers offering this type of service. Separate disposal of a household appliance makes it possible to prevent potentially negative effects on health and the environment as well as to recover the material of which the appliance is made in order to achieve significant savings in terms of energy and resources. The product is marked with a crossed out wheeled bin symbol to show that it needs to be disposed of separately. Never throw batteries into fire.
- 22 To unplug the appliance, grip the plug and remove it directly from the power socket. Never pull the power cord to unplug the appliance.
- 23 Never use the appliance if the power cord or plug are damaged or if the appliance itself is faulty; in this case, contact our Customer Support Centre on 1300 886 649 or info@tempo.org.
- 24 To prevent any risks, if the power cord is damaged, it must be replaced by the manufacturer, its Technical Assistance Service or a similarly qualified person.
- 25 This appliance is designed for HOME USE ONLY and may not be used for commercial or industrial purposes.
- 26 Any changes to this product that have not been expressly authorised by the manufacturer may lead to the user's guarantee being rendered null and void.
- 27 In the event that you decide to dispose of the appliance, we advise you to make it inoperative by cutting off the power cord. We also recommend that any parts that could be dangerous be rendered harmless, especially for children, who may play with the appliance or its parts.
- 28 Packaging must never be left within the reach of children since it is potentially dangerous.
- 29 Unless your home is already fitted with a residual current device (safety switch), we recommend installing an RCD with a rated residual operating current not exceeding 30mA to provide additional safety protection when using electrical appliances. See your electrician for professional advice.

DO NOT THROW AWAY THESE INSTRUCTIONS

The manufacturer reserves the right to make small improvements of colour changes."

DESCRIPTION OF THE APPLIANCE (Fig. 1)

- A Battery charger
- B Attachment insertion pin
- C Handgrip
- D On/Funnel release button
- E Disc support
- F Disc with blade for thick slicing
- G Disc with julienne blade
- H Disc with fine slicing blade
- I Disc with crinkled slicing blade
- L Food press
- M Funnel
- N Lit recharge indicator
- O Socket for battery charger
- P Appliance body
- Q Spatula

CHARGING

For the batteries to operate at full power, they need to be charged for about 24 hours.

To charge the batteries, connect the battery charger (A), inserted into the rear socket (O) of the appliance, into the mains power socket. The lit indicator (N) will switch on to show that the batteries are charging.

CHARGING NOTES

The appliance batteries will last for longer and work better if the appliance is used with a certain frequency.

The handgrip (C) may heat up slightly during charging, but this is normal.

Do not charge batteries in temperatures of lower than 4°C or higher than 40°C, as this could damage them.

If the appliance will not operate, make sure that it has been charged correctly and that, during the charge phase, it was correctly connected to the mains socket using the battery charger (A).

INSTRUCTIONS FOR USE

IMPORTANT: Before each use, rinse the parts that will come into contact with foods in running water.

- Place the appliance body (P) on a flat, steady surface.
- Fit the disc support (E) onto the appliance body (P), placing it over the attachment insertion pin (B) (Fig. 2).
- Place the correct disc for the food to be cut over the support (E), making sure it is centred on the attachment insertion pin (B) (Fig. 3).

IMPORTANT: To prevent accidents or injuries, never fit the discs on the base without first fitting the proper support (E).

IMPORTANT: The disc blades are very sharp and need to be handled with the utmost care.

- Fit the funnel (M) onto the appliance body (P) (Fig. 4) by inserting it from the top and at the same time, pushing the On/Funnel release button (D) upwards. Press the funnel gently down until it clicks into place, so that the back reference tab on the funnel (M) slides into the relevant guide on the appliance body (P) (Fig. 5).

IMPORTANT: Before operating the appliance, make sure that it has been assembled correctly.

- Place a container under the bottom opening of the funnel (M) and insert the food in the special chute on the top of the funnel (M).

IMPORTANT: Different types of food may need to be chopped into small pieces before it can be inserted into the funnel (M); carrots and zucchini, for example, can be inserted whole.

- Holding the handgrip (C), press the on button (D) downwards and while holding the bottom down, push the vegetables down towards the rotating blade, using the food presser (L) (Fig. 6).

IMPORTANT: Never operate the appliance for more than 60 seconds at a time. Wait at least 3 minutes before using it again.

IMPORTANT NOTE: Do not use too much pressure on the food presser (L) as this could slow down the motor and/or block the disc.

IMPORTANT: Never press down on food with your hands; always use the special food presser.

IMPORTANT: To prevent accidents or damage to the appliance, always keep hands and cooking utensils well away from moving blades or discs.

- After use, release the on button (D) and remove the single parts of the appliance.
- Remove the funnel (M) pushing the on/release button (D) upwards at the same time (Fig. 7).
- Remove the disc and the support (E) first sliding out the disc by pulling it upwards.

IMPORTANT: Take special care when removing the disc and never touch the sharpened blade with your fingers. If disc removal is difficult, use kitchen gloves. Never use utensils of any kind to force out the disc.

USEFUL ADVICE

Food should be cut into pieces for easier insertion into the funnel (M).

IMPORTANT: Some longer vegetables (e.g., carrots, medium-sized zucchini, celery, ...) can also be inserted whole, while others (e.g., onions, potatoes, various pieces of fruit) need to be cut into pieces to fit inside the chute on the funnel (M).

- To obtain small pieces, insert the foods vertically (no more than one piece at a time). This procedure is especially recommended for cutting into Julienne strips or for crinkled cuts.

The best results are achieved with sufficiently firm foods.

If the food to be chopped is not sufficiently firm, we advise keeping it in the freezer for enough time for it to harden (as long as it does not freeze). Do not use the appliance to chop excessively hard foods (for example, ice cubes).

IMPORTANT: Processing foods that are too soft and/or pressing down too hard with the food presser

(L), or after intensive and continued use, could cause the disc to slow down and/or become blocked. In this case, stop the appliance immediately by releasing the on button, remove the funnel (M) and the disc, and clean it perfectly, removing any vegetable residues that might be present.

CLEANING

WARNING: NEVER PLACE THE APPLIANCE BODY, PLUG OR THE POWER CORD OF THE BATTERY CHARGER IN WATER OR OTHER LIQUIDS. WIPE CLEAN WITH A DAMP CLOTH.

For easier clearing, rinse the parts immediately after use and use the spatula (Q), provided.

Appliance attachments (blades, disc support, funnel and food presser), with the exception of the appliance body (P) can be washed in hot soapy water or directly in the top rack of the dishwasher.

WARNING: When cleaning the discs, always take care with the blade and always wear kitchen gloves to protect your hands.

-Ariete

Distributed by Tempo (Aust) Pty Ltd
PO Box 6056, Frenchs Forest DC 2086

After Sales Support:

1300 886 649

info@tempo.org