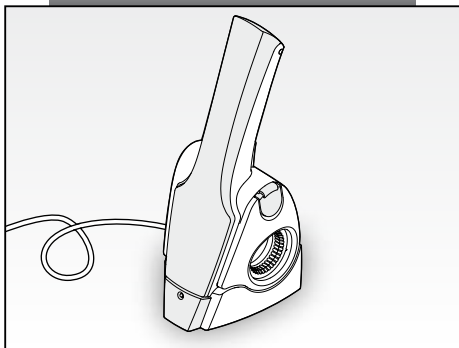




Mod. 447



gratì

Ariete

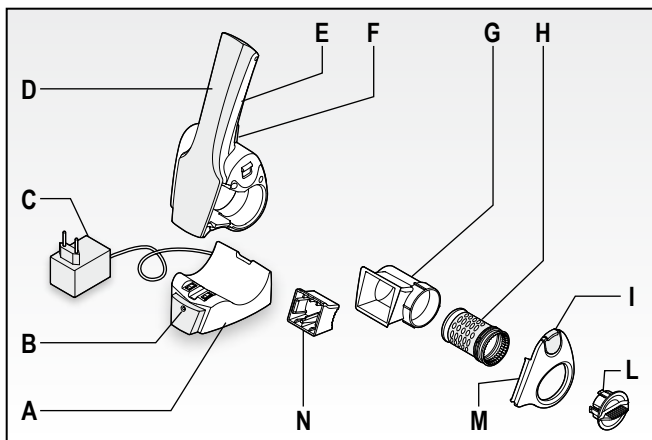


Fig. 1

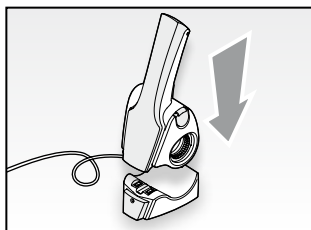


Fig. 2

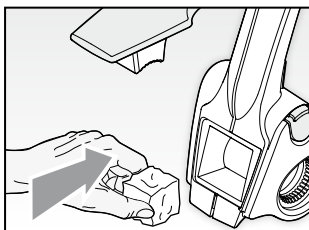


Fig. 3

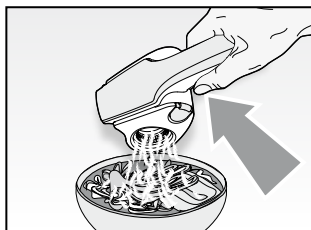


Fig. 4

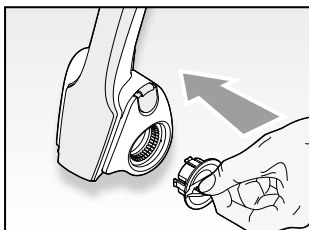


Fig. 5

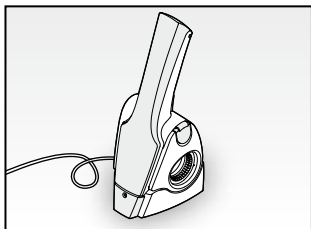


Fig. 6

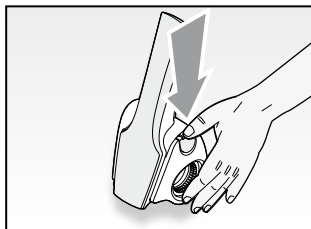


Fig. 7

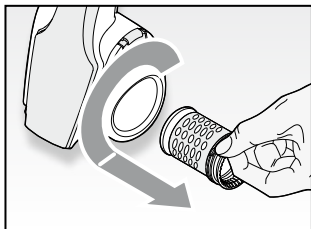


Fig. 8

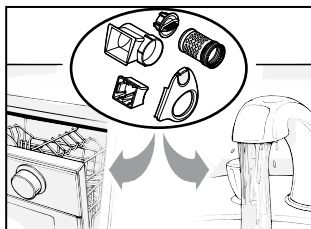


Fig. 9

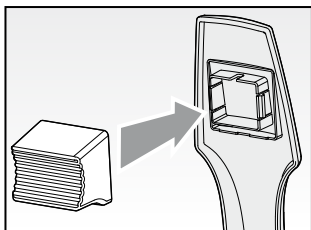


Fig. 10

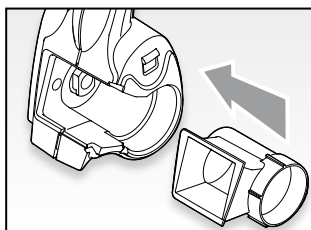


Fig. 11

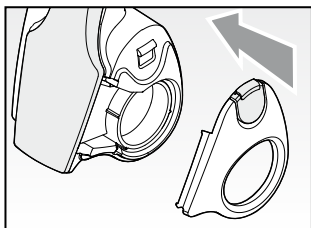


Fig. 12

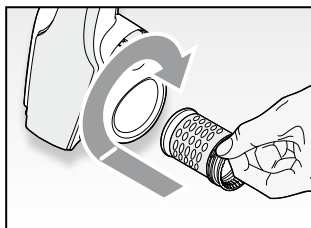


Fig. 13

IMPORTANT SAFEGUARDS

READ THESE INSTRUCTIONS BEFORE USE

The necessary precautions must be taken when using electrical appliances, and these include the following:

1. Before connecting the charging unit to the mains power, make sure that the voltage on the appliance rating plate is compatible with that of the mains power.
2. Never leave the appliance unattended when connected to the power supply; unplug it after every use.
3. Never place the appliance on or close to sources of heat.
4. Never leave the appliance exposed to the elements (rain, sun, etc....).
5. Make sure that the power cord does not come into contact with hot surfaces.
6. This appliance can be used by children aged from 8 years and above if they have been given supervision or instruction concerning use of the appliance in a safe way and if they understand the hazards involved. Cleaning and user maintenance shall not be made by children unless they are aged from 8 years and above and supervised. Keep the appliance and its cord out of reach of children aged less than 8 years.
7. Appliances can be used by persons with reduced physi-

cal, sensory or mental capabilities or lack of experience and knowledge if they have been given supervision or instruction concerning use of the appliance in a safe way and if they understand the hazards involved.

8. NEVER STAND THE APPLIANCE BODY, CHARGING UNIT, PLUG OR POWER CORD IN WATER OR OTHER LIQUIDS. WIPE CLEAN WITH A DAMP CLOTH.
9. REMOVE THE APPLIANCE FROM THE CHARGING UNIT DURING USE.
10. Always make sure that your hands are thoroughly dry before using or adjusting the switches on the appliance, or before touching the power plug or power connections.
11. NEVER TOUCH MOVING PARTS.
12. Never operate the appliance if it is empty.
13. Never use the appliance to chop excessively hard foods (for example, ice cubes or meat on the bone).
14. In case of replacement and/or maintenance of the charging unit or power cord, contact an Ariete Authorised Assistance Centre or similarly qualified person in order to avoid any risks.
15. In the event that fluid should leak from the batteries, do not use the appliance; contact our Customer Support Centre on 1300 886 649 or info@tempo.org to replace the batteries.
16. This appliance operates using rechargeable NiMH batteries and therefore, at the end of its useful life, it must

not be disposed of with standard household waste. It can be taken to one of the relevant recycling centres operated by your local authority or to retailers offering this service. The separate disposal of an electrical or electronic appliance makes it possible to avoid the possible negative consequences to health and the environment of unsuitable disposal methods and it also means it is possible to recover the material used to make it, meaning a significant saving in terms of energy and resources. To point out the obligation for separate disposal of electrical appliances the product has the crossed-out wheeled bin symbol. Never throw batteries into fire.

17. To unplug the appliance, grip the plug and remove it directly from the power socket. Never pull the power cord to unplug the appliance.
18. Never use the appliance if the power cord or plug are damaged or if the appliance itself is faulty; in this case, contact our Customer Support Centre on 1300 886 649 or info@tempo.org.
19. To prevent any risks, if the power cord is damaged, it must be replaced by the manufacturer, its Technical Assistance Service or a similarly qualified person.
20. This appliance is designed for HOME USE ONLY and may not be used for commercial or industrial purposes.
21. Any changes to this product that have not been

expressly authorised by the manufacturer may lead to the user's guarantee being rendered null and void.

22. In the event that you decide to dispose of the appliance, we advise you to make it inoperative by cutting off the power cord. We also recommend that any parts that could be dangerous be rendered harmless, especially for children, who may play with the appliance or its parts.
23. Packaging must never be left within the reach of children since it is potentially dangerous.
24. Unless your home is already fitted with a residual current device (safety switch), we recommend installing an RCD with a rated residual operating current not exceeding 30mA to provide additional safety protection when using electrical appliances. See your electrician for professional advice.

DO NOT THROW AWAY THESE INSTRUCTIONS

The manufacturer reserves the right to make small improvements of colour changes.

Dear Customer,

Your Ariete GRATÌ rechargeable electric grater will soon become an indispensable aid in your kitchen, making it so much easier to prepare cheese so that you can always enjoy it freshly grated. This appliance has been designed to grate any type of hard or medium-hard cheese but it can also grate chocolate, dry bread, almonds, nuts, etc. And now, Grati is even easier to clean because all the parts are removable and it is also even more hygienic, thanks to the cap to close it at the side. The GRATÌ rechargeable grater works after being charged on a charging unit powered from the mains.

DESCRIPTION OF THE APPLIANCE (Fig. 1)

A	Charging unit	G	Hopper
B	Operating light	H	Grater rollers
C	Power adaptor/plug for charging unit	I	Hopper lid release button
D	Press lever	L	Roller cap
E	Appliance body	M	Hopper lid
F	Start button	N	Removable section of the press lever

Please read these instructions with care before using the appliance; they will allow you to get the best possible performance from your “Grati” and to keep it working longer.

CHARGING THE BATTERIES

WARNING: Always charge the battery completely before using the appliance.

IMPORTANT: Always charge the battery for 24 hours to activate it before using it for the first time, after which time, the time needed to charge it fully will be approximately 16 hours.

IMPORTANT: Make sure not to start the appliance while it is charging.

- Connect the plug from the charging unit (A); the operating light (B) switches on to show that the mains power is connected. This light will switch off once the power cord is removed from the mains socket;
- insert the appliance body (E) into the charging unit (A) (Fig. 2). After approximately 16 hours, the appliance will be charged and the ready for use.

WARNING: We recommend using up the full battery charge before charging it again.

Charging unit

The charging unit serves to charge the batteries inside the appliance handle and it has the additional bonus of serving to put away the appliance when it is not being used; therefore, it needs to be placed near to a mains power socket.

Notes about charging

The charge will last longer and the appliance will work better if it is used on a regular basis.

IMPORTANT: The top part of the appliance body (E) can become warm while it is charging; this is normal.

IMPORTANT: Do not charge the appliance at temperatures below 5°C (40°F) or above 40°C (105°F) as this could damage the batteries.

IMPORTANT: If the appliance does not work, make sure that it is housed correctly in the charging unit (A), that the plug is inserted correctly.

Important: If, after repeated use, the power seems not to last so long, this does not mean that the unit is faulty. This problem can be solved by leaving the appliance switched on until it stops working and then charge it for approximately 16 hours. This will improve the charge capacity of the batteries. Repeat this operation several times, if necessary. If the power still does not last for very long, contact your assistance centre.

INSTRUCTIONS FOR USE

IMPORTANT: REMOVE THE APPLIANCE FROM THE CHARGING UNIT DURING USE.

IMPORTANT: NEVER USE THE APPLIANCE WHEN EMPTY.

- When the appliance has charged, take it out of its base (A).
- Cut the food into "cubes" (if cheese, remove the rind) and place the cubes inside the hopper (G) (Fig. 3). Then lower the press lever (D).
- Use the grater over a container or grate directly onto the food, pressing the start button (F) (Fig. 4).
- The appliance now has a handy, hygienic cap (L) to prevent dirt and dust from entering inside the roller. After use, fit the cap (L) onto the lid (M) (Fig. 5) and put away the appliance, using the charging unit (A) as a support for upright storage (Fig. 6).

IMPORTANT: Do not place the appliance in the refrigerator, as this could damage the batteries.

IMPORTANT: It is not hygienic to leave cheese (or chocolate) inside the hopper for days and it could lead to the formation of mould or unpleasant smells.

Therefore, after each use, we recommend removing any food that has not been used (unless it is going to be grated within a very short space of time) and to store them appropriately in line with normal hygiene standards.

CLEANING AND MAINTENANCE

IMPORTANT: NEVER STAND THE APPLIANCE BODY, CHARGING UNIT, PLUG OR POWER CORD IN WATER OR OTHER LIQUIDS. WIPE CLEAN WITH A DAMP CLOTH.

IMPORTANT: We recommend cleaning the appliance regularly since during use, residues of food can become trapped inside the hopper. Constant cleaning will guarantee greater hygiene for your food. We recommend that you ALWAYS clean the appliance if it is used with different foods (for example, if grating chocolate after first grating cheese), since any residues of one food could affect the taste of the others.

IMPORTANT: Keep the appliance clean and tidy; this way you will be guaranteed excellent prepared foods and a longer appliance lifetime.

Before cleaning the appliance, it needs to be disassembled completely, proceeding as follows:

- remove the cap (L), if necessary, by pulling it outwards;
- remove the lid (M) by pressing the release button (I) and at the same time, pulling it outwards (Fig. 7);
- turn the roller (H) about a 1/4 turn anticlockwise and remove it (Fig. 8);
- slide out the hopper (G) from the appliance body (E) and take out the removable section of the press lever (N) from the lever (D) by pulling it out.

Only the removable parts (roller, hopper and hopper lid, removable press and cap), as shown in Fig. 9, can be washed in hot soapy water or in the top rack of the dishwasher.

To clean the other parts (appliance body, non-removable presser and charging unit) wipe clean with a damp cloth and NEVER stand in water or other liquids.

Also take care not to use abrasive cloths which could scratch and damage the plastic parts. Only use soft cloths.

Reassembling the appliance

Before using the appliance again, it needs to be reassembled as follows:

- lift the press lever (D) and fit the removable section (N) into the seat, pressing it until it clicks into place (Fig. 10). Make sure that the tap enters the slot in the presser (D);
- insert the hopper (G) as far as it will go inside the appliance body (E) (Fig. 11);
- fit the lid (M) onto the appliance body (E) making sure it is perfectly lined up inside its housing and pressing it gently until it clicks into place (Fig. 12);
- insert the roller (H) into its seat inside the appliance body (E) and holding it down, turn it by a 1/4 turn clockwise (Fig. 13).

IMPORTANT: Before using the appliance, make sure that all parts have been correctly fitted inside it.

-Ariete

Distributed by Tempo (Aust) Pty Ltd
PO Box 6056, Frenchs Forest DC 2086

After Sales Support:
1300 886 649
info@tempo.org