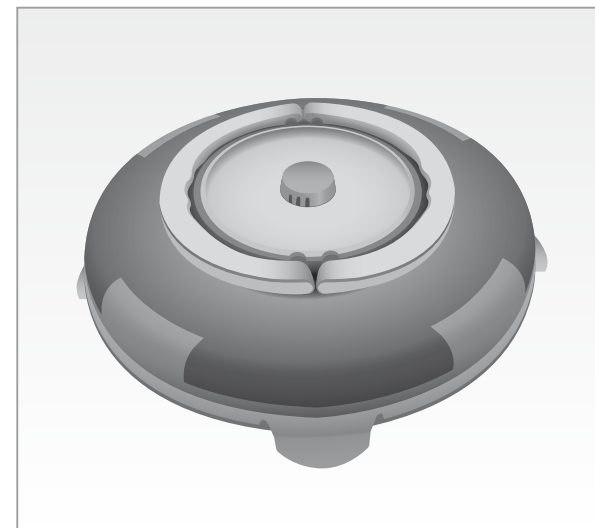


# ***Ariete***



# scaldì

## ***Ariete***

Distributed by Tempo (Aust) Pty Ltd  
PO Box 6056, Frenchs Forest DC 2086

After Sales Support:  
1300 886 649  
[info@tempo.org](mailto:info@tempo.org)



## Mod. 799

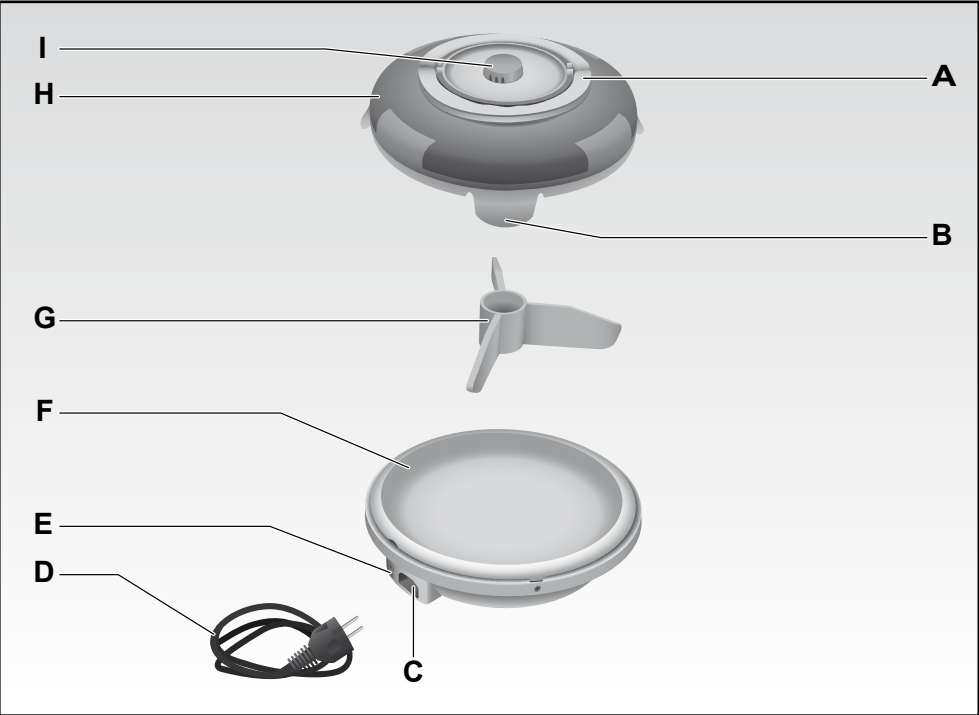


Fig. 1

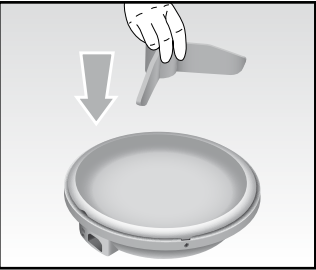


Fig. 2

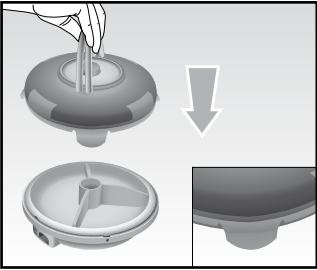


Fig. 3

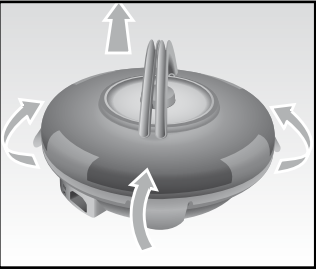


Fig. 4

# IMPORTANT SAFEGUARDS

## READ THESE INSTRUCTIONS BEFORE USE.

The necessary precautions must be taken when using electrical appliances, and these include the following:

1. Make sure that the voltage on the appliance rating plate corresponds to that of the mains electricity.
2. Never leave the appliance unattended when connected to the power supply; unplug it after every use.
3. Never place the appliance on or close to sources of heat.
4. Always place the appliance on a flat, level surface during use.
5. Never leave the appliance exposed to the elements (rain, sun, etc....).
6. Make sure that the power cord does not come into contact with hot surfaces.
7. This appliance must not be used by people (including children) with reduced physical or mental capabilities or by people without the relevant experience or knowledge of the appliance, unless they are carefully supervised or properly trained in its use by a person responsible for their safety.
8. Make sure that children cannot play with the appliance.
9. Never place the appliance body, plug or power cord in water or other liquids; always wipe clean with a damp cloth.
10. Always unplug the power cord from the electricity mains before fitting or removing single attachments or before cleaning the appliance.
11. This product cannot be powered using external timers or separate, remote controlled systems.
12. **IMPORTANT: This appliance must not be used with coal or similar fuels.**
13. Never touch the plate while it is operating: risk of burns and scalds.
14. Never operate the appliance while there is no food inside it.
15. Never carry or move the appliance while it is connected to the mains electricity.
16. Never cover the insides of the appliance with foil, as there is a risk of serious damage to its operation.
17. Never wrap foods in film or plastic, as this could damage the appliance as well as being a potential fire hazard.
18. Only use this appliance to heat foods.
19. Make sure that hands are thoroughly dry before touching the plug or power connections.
20. To unplug the appliance, grip the plug and remove it directly from the power

socket. Never pull the power cord to unplug the appliance.

21. Do not use the appliance if the power cord or plug is damaged or if the appliance itself is faulty. If the power cord is damaged, it must be replaced by a new cord or special assembly, by the manufacturer or its technical assistance service.
22. In the interests of risk prevention, all repairs must only be performed by service personnel authorised by the distributor. Contact our Customer Support Centre on 1300 886 649 or [info@tempo.org](mailto:info@tempo.org) for advice
23. In case of using extension leads, these must be suitable for the appliance power to avoid danger to the operator and for the safety of the environment in which the appliance is being used. Extension leads, if not suitable, can cause operating anomalies.
24. Never allow the cord to dangle in places where it may be grabbed by a child.
25. Do not threaten the safety of the appliance by using parts that are not original or which have not been approved by the manufacturer.
26. This appliance is designed for HOME USE ONLY and may not be used for commercial or industrial purposes.
27. Any changes to this product that have not been expressly authorised by the manufacturer may lead to the user's guarantee being rendered null and void.
28. In the event that you decide to dispose of the appliance, we advise you to make it inoperative by cutting off the power cord. We also recommend that any parts that could be dangerous be rendered harmless, especially for children, who may play with the appliance or its parts.
29. Packaging must never be left within the reach of children since it is potentially dangerous.
30. Unless your home is already fitted with a residual current device (safety switch), we recommend installing an RCD with a rated residual operating current not exceeding 30mA to provide additional safety protection when using electrical appliances. See your electrician for professional advice.

## **DO NOT THROW AWAY THESE INSTRUCTIONS**

*The manufacturer reserves the right to make small improvements of colour changes.*

## DESCRIPTION OF THE APPLIANCE (Fig. 1)

- A Handles
- B Lid lock tabs
- C Power cord socket
- D Power cord
- E Pilot light
- F Plate
- G Food divider
- H Lid
- I Steam vent

## INSTRUCTIONS FOR USE

- Before use, clean the plate (F), the lid (H) and the divider (G) using a cloth, some hot water and a mild detergent. Dry thoroughly.
- Place the food for heating on the plate (F) using a spatula or cooking tongs.  
If heating different types of food at the same time, insert the food divider (G) into the plate (F) before use (Fig. 2).
- Fit the lid (H) over the plate (F), using the special handles (A) and lock it in place by pressing gently downwards until the bottom tabs (B) can be heard clicking into place (Fig. 3).
- Insert the relevant end of the power cord (D) into the socket (C) on the appliance and then plug the appliance into the mains power. The pilot light (E) will switch on to show that the heating stage has begun.

**Note:** It takes an average of about 10 minutes to heat the food.

- Once the food has heated, unplug the appliance from the mains power.
- Remove the lid by lifting both lock tabs (B) at the same time (Fig. 4).
- The appliance can also be used for storing foods inside a refrigerator.

### **IMPORTANT:**

***Before using the appliance, make sure that it is correctly assembled.***

***Wear oven gloves during use to avoid the risk of scalding or burns.***

***Lift the lid with care to avoid potential scalds from the moisture that forms inside the appliance.***

## CLEANING AND MAINTENANCE

Clean the plate (F), lid (H) and divider (G) using a cloth with hot water and a mild detergent.

### **IMPORTANT:**

***Wait for the plate (F) to cool before cleaning.***

***Never use strong, abrasive or solvent products. Do not use scourers, steel wool or scouring pads impregnated with soap.***

