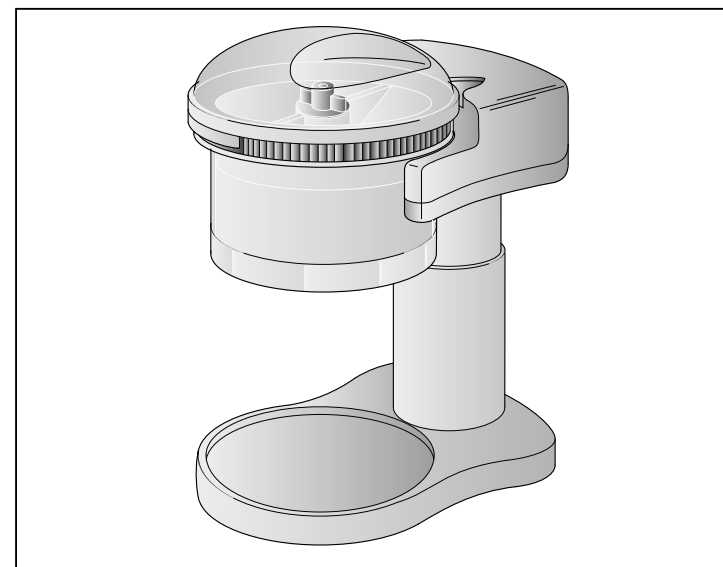


Ariete



Slushie Maker

Ariete

Distributed in Australia by
Mann & Noble Pty Ltd
ABN 87 147 260 197
Unit 1, Southridge Unit Estate
2 Southridge Street
Eastern Creek NSW 2766
National Toll Free 1800 099 385
customerservice@mann-noble.com



Mod. 78

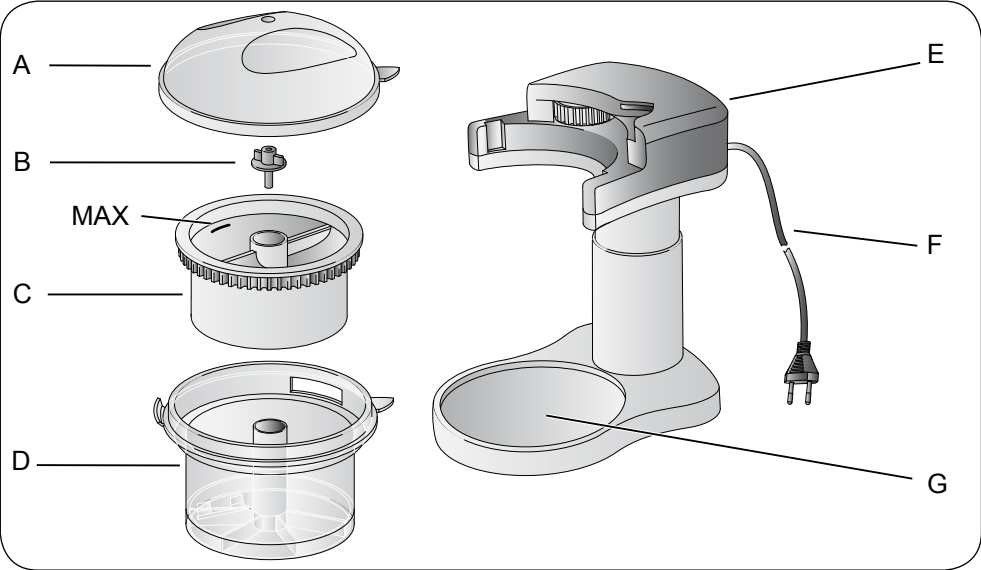


Fig. 1

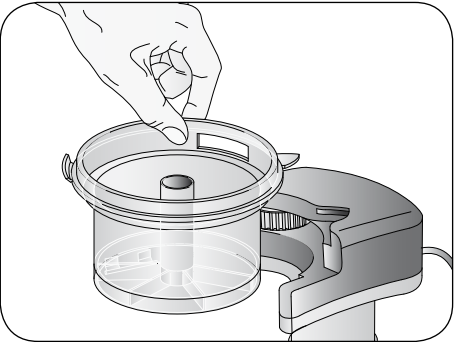


Fig. 2

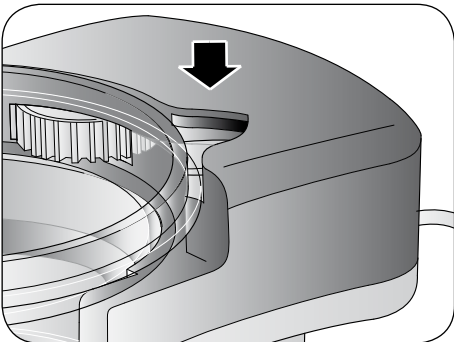


Fig. 3

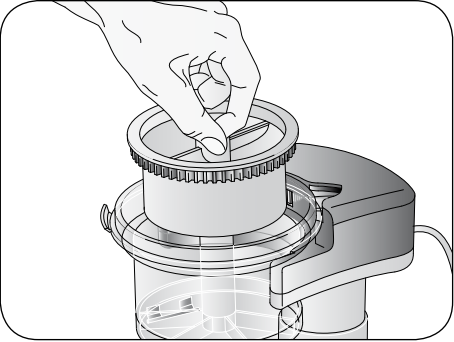


Fig. 4

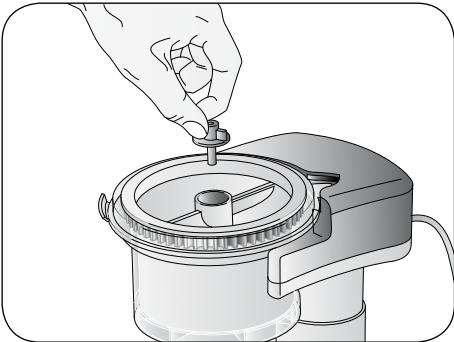


Fig. 5

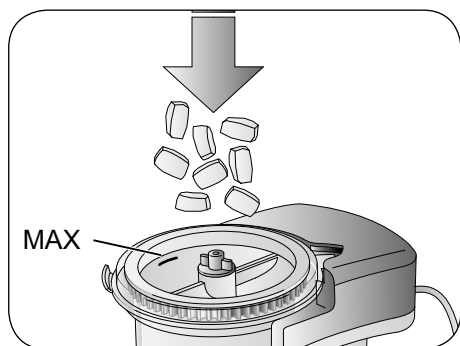


Fig. 6



Fig. 7

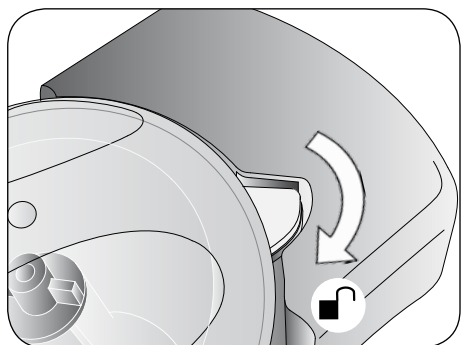


Fig. 8

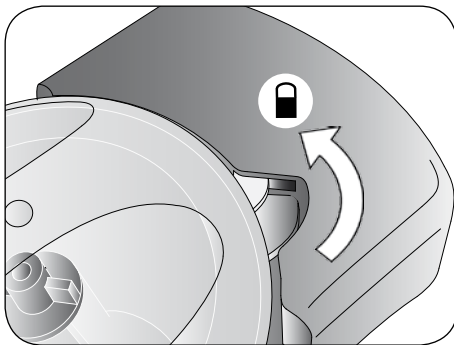


Fig. 9

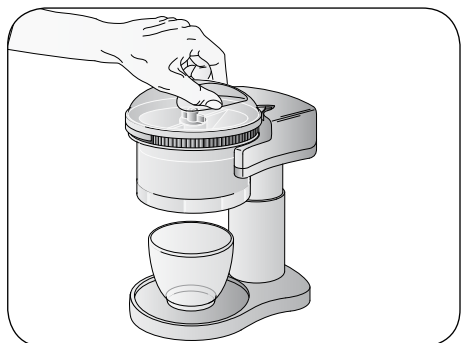


Fig. 10

IMPORTANT SAFEGUARDS

READ THESE INSTRUCTIONS BEFORE USE

The necessary precautions must be taken when using electrical appliances, and these include the following:

1. Make sure that the voltage on the appliance rating plate corresponds to that of the mains electricity.
2. Never leave the appliance unattended when connected to the power supply; unplug it after every use.
3. Never place the appliance on or close to sources of heat.
4. Always place the appliance on a flat, level surface during use.
5. Never leave the appliance exposed to the elements (rain, sun, etc....).
6. Make sure that the power cord does not come into contact with hot surfaces.
7. This appliance must not be used by children. Keep the appliance and the power cord out of reach of children.
8. This appliance must not be used by people (including children) with reduced physical or mental capabilities or by people without the relevant experience or knowledge of the appliance, unless they are carefully supervised or properly trained in its use by a person responsible for their safety.
9. Make sure that children cannot play with the appliance.
10. Never place the appliance body, plug or power cord in water or other liquids; always wipe clean with a damp cloth.
11. Always unplug the power cord from the electricity mains before fitting or removing single attachments or before cleaning the appliance.
12. Always make sure that your hands are thoroughly dry before using or adjusting the switches on the appliance, or before touching the power plug or power connections.
13. To unplug the appliance, grip the plug and remove it directly from the power socket. Never pull the power cord to unplug the appliance.
14. Do not use the appliance if the power cord or plug are damaged or if the appliance itself is faulty; all repairs, including substitution of power cord, must be carried out exclusively by personnel authorised by the distributor in order to avoid all risks. Contact our Customer Support Centre on 1800 099 385 or customerservice@mann-noble.com.
15. In case of using extension leads, these must be suitable for the appliance power to avoid danger to the operator and for the safety of the environment in which the appli-

- ance is being used. Extension leads, if not suitable, can cause operating anomalies.
16. Never allow the cord to dangle in places where it may be grabbed by a child.
 17. Do not threaten the safety of the appliance by using parts that are not original or which have not been approved by the manufacturer.
 18. This appliance is designed for HOME USE ONLY and may not be used for commercial or industrial purposes.
 19. Any changes to this product that have not been expressly authorised by the manufacturer may lead to the user's guarantee being rendered null and void.
 20. In the event that you decide to dispose of the appliance, we advise you to make it inoperative by cutting off the power cord. We also recommend that any parts that could be dangerous be rendered harmless, especially for children, who may play with the appliance or its parts.
 21. Packaging must never be left within the reach of children since it is potentially dangerous.
 22. IMPORTANT: INSERT THE BLADE BEFORE THE FOODS. Before removing the lid, wait for the blade to stop moving completely and always unplug the power cord from the mains power.
 23. Never operate the appliance when empty.
 24. Never touch moving parts.
 25. Do not use the appliance if the blade is damaged.
 26. NEVER INSERT LIQUIDS INTO THE BOWL.
 27. Do not use the appliance to chop excessively hard foods (for example, meat on the bone).
 28. To prevent accidents or damage to the appliance, always keep hands and cooking utensils well away from moving parts.
 29. Blades are sharp: handle with care both when inserting and removing them from the container and during cleaning.
 30. Unless your home is already fitted with a residual current device (safety switch), we recommend installing an RCD with a rated residual operating current not exceeding 30mA to provide additional safety protection when using electrical appliances. See your electrician for professional advice.

DO NOT THROW AWAY THESE INSTRUCTIONS

The manufacturer reserves the right to make small improvements of colour changes.

DESCRIPTION OF THE APPLIANCE

- A Lid
- B Lock nut
- C Ice bucket
- D Container
- E Motor body
- F Power cord + plug
- G Support base

INSTALLING THE APPLIANCE

Remove all packing material from the components.

Place the motor housing (E) into the opening on the support base (G): press down the motor housing.



Warning!

Before using the appliance, it is recommended to wash all removable parts that come into contact with the ice (container, ice bucket, lock nut and lid) with water and common dishwashing soap.

INSTRUCTIONS FOR USE



Warning!

The components assembly and disassembly must be carried out with the machine off and power cord unplugged from the power outlet. The container has a sharp blade inside. Handle the container with care during assembly, disassembly and cleaning.

Before using the appliance, make sure to have correctly installed all components:

- Place the container (D) on the motor housing (Fig. 2). Align the tab on the container with the seat on the machine body (Fig. 3).
- Place the ice bucket (C) in the container (Fig. 4).
- Place the lock nut (B) into the hole on the ice bucket (Fig. 5). Turn the nut clockwise to lock the ice bucket.
- Place a glass on the support base (G), under the ice bucket.

If you use paper cups place them into heavier cups.

- Insert ice in the bucket (Fig. 6).

Never fill the ice bucket over the MAX level.

- Plug into the mains socket.
- Place the lid (A) on the container (Fig. 7). Align the tab on the lid with the seat on the machine body (Fig. 8).
- Turn the lid counterclockwise. The tab on the lid enters into the machine body and activates the motor rotation (Fig. 9). The bucket starts turning and crushed ice goes down into the glass. The lid must be kept locked with the hand (Fig. 10).
- To stop the rotation of the bucket turn the lid clockwise: bring the tab on the lid out of the machine body (Fig. 8).

- Unplug it from the socket-outlet.

At the end of the operation ice residues could have been left in the bucket and in the container. Remove excess ice.



Warning!

The appliance must not be operated for more than 5 consecutive minutes. Wait for the motor to cool before performing a new operation.

When using the appliance for the first time, it may happen that give off a slight odour and a bit of smoke. This is normal and is due to the fumes of oils for lubricating the appliance parts.

The sounds you hear during use are normal.

CLEANING



Warning!

All cleaning operations described below must be performed with the machine off and with the electric plug disconnected from the socket-outlet.

Regular maintenance and cleaning preserve and keep the machine efficient for a longer amount of time. Never wash machine components in the dishwasher. Do not use direct jets of water.

All operations must be performed when the machine is cold.

The container has a sharp blade inside. Handle the container with care during assembly, disassembly and cleaning.

- Disassemble the appliance in all its components.
- Wash the lid (A), the ice bucket (C), the container (D) and the lock nut (B) with lukewarm soapy water. Dry all components.
- Clean the motor body (E) and the support base (G) with a damp sponge or with a cloth.
- Reassemble the appliance. The appliance can be stored with the base separate from the machine body.



Warning!

Do not use abrasive detergents or metallic utensils. Rinse and dry all parts thoroughly.

Do not store plastic parts inside the fridge.

SUGGESTIONS

If the appliance motor is working excessively try to leave the ice cubes at room temperature for a few minutes.

Never fill the ice bucket over the MAX level. The lid must close the container without forcing.

Cube-shaped ice will be crushed better than ice with rounded shapes.