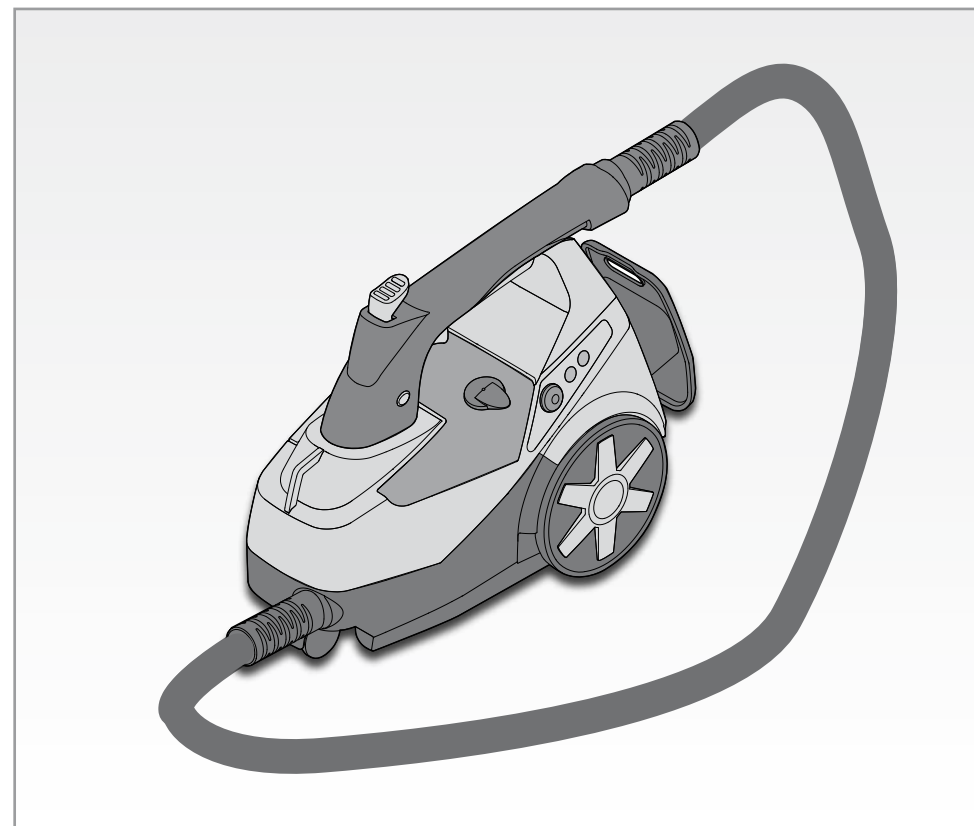


# ***Ariete***

by **KENWOOD**

INSTRUCTIONS FOR USE .....2



**SCS.20**



***Ariete***

by **KENWOOD**

De'Longhi Australia Pty Ltd

ABN 49 104 012 857

Po Box 4540

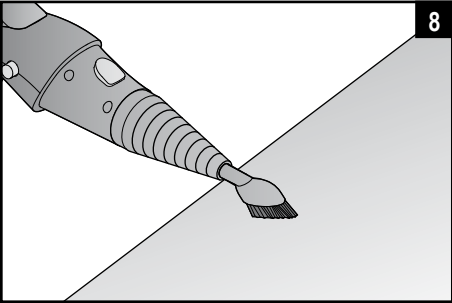
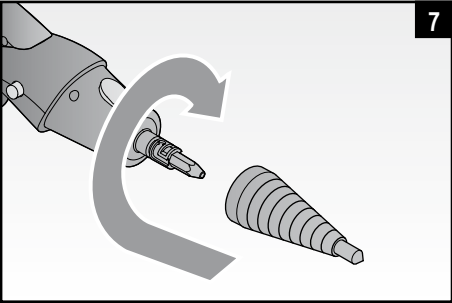
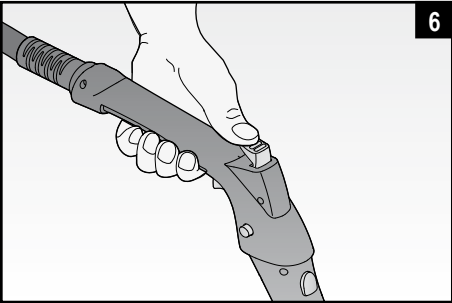
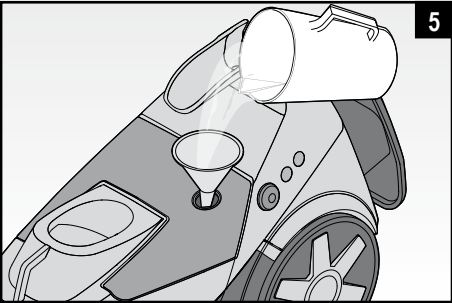
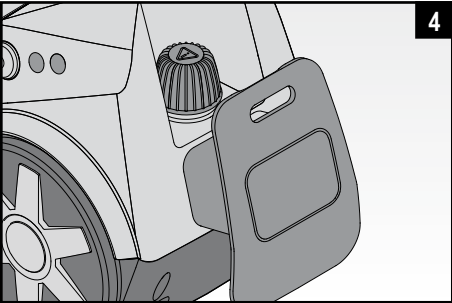
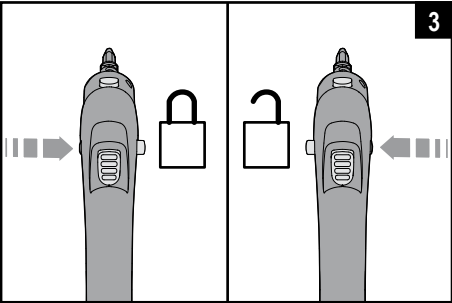
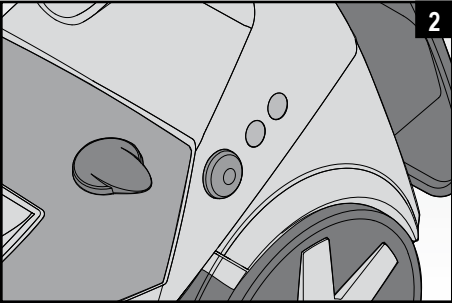
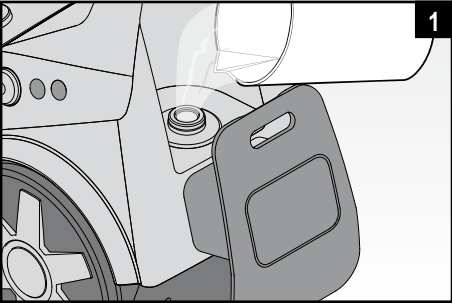
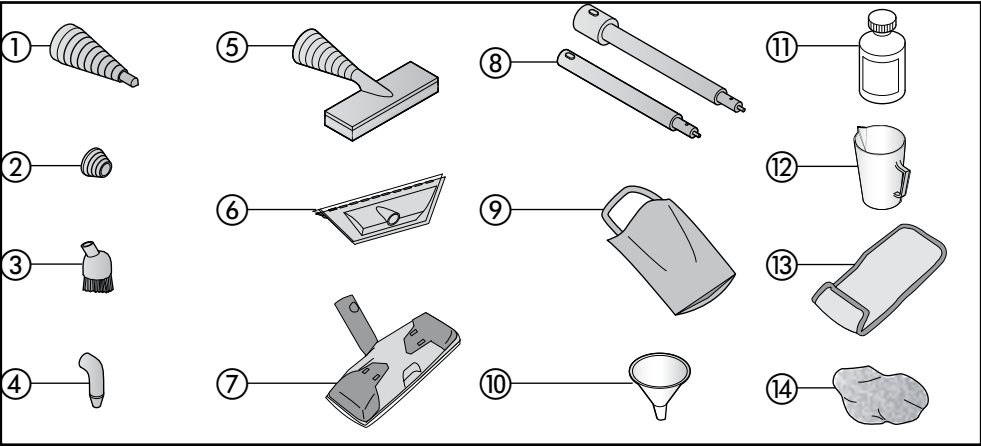
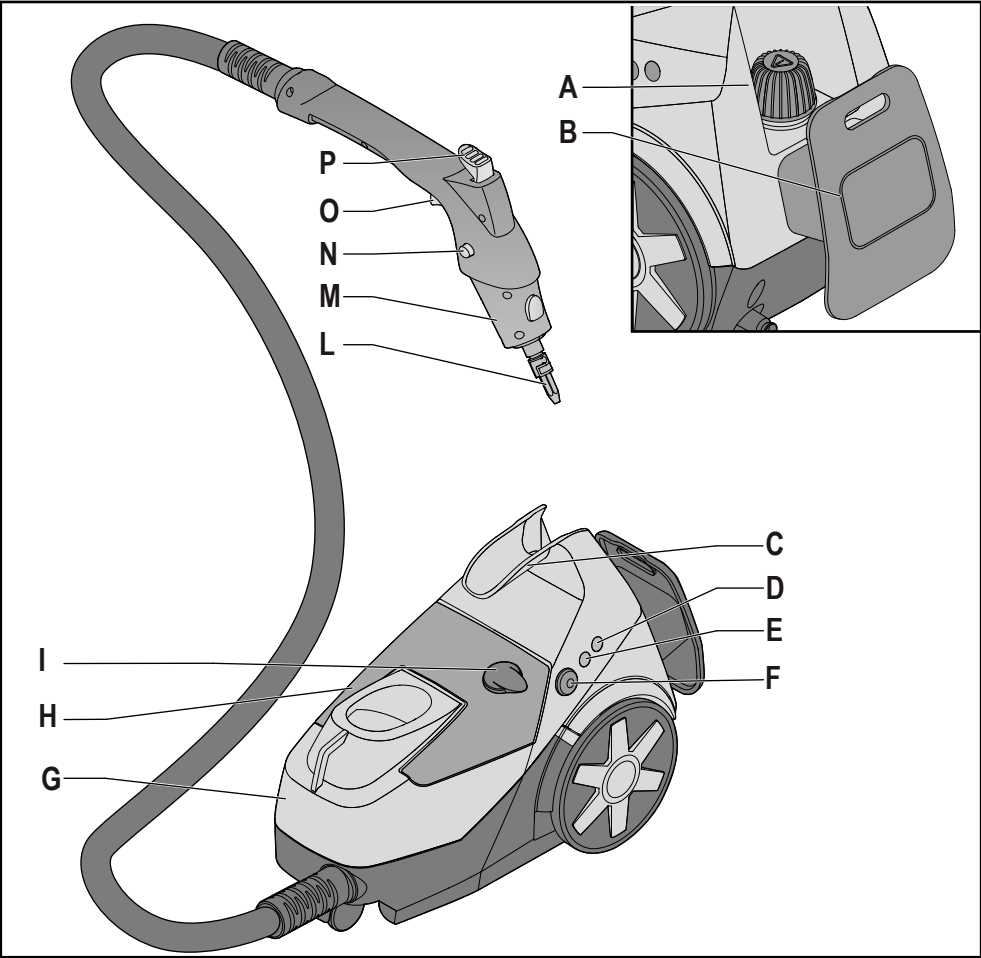
Casula Mall NSW 2170

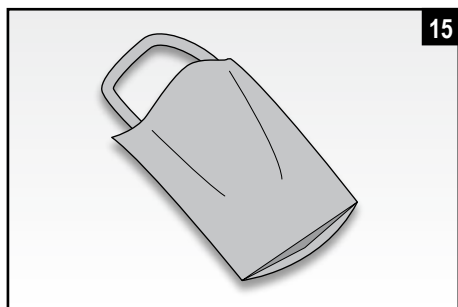
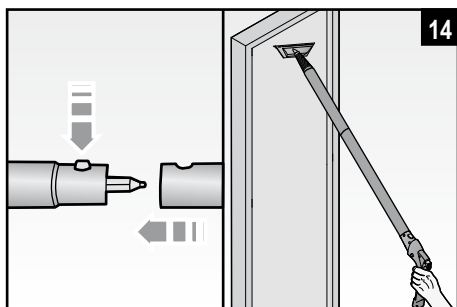
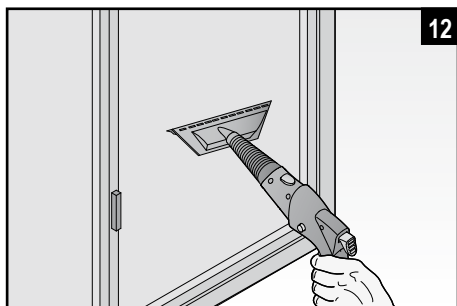
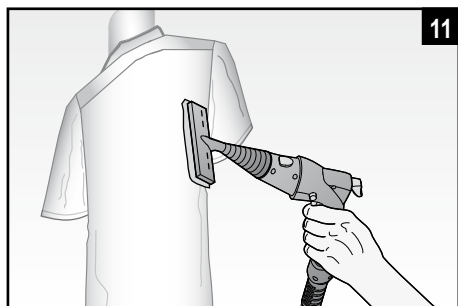
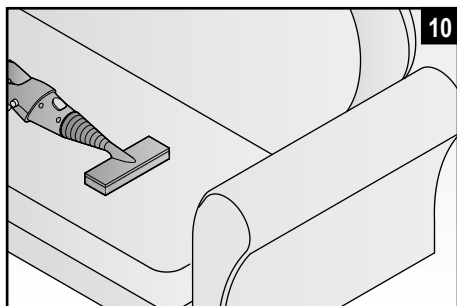
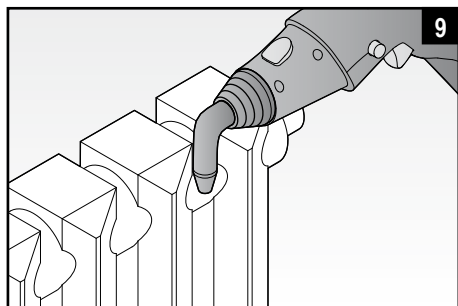
Australia

Phone: 1800 126 659

Fax: 1800 007 289

[www.kenwood-australia.com](http://www.kenwood-australia.com)





---

**CONTENTS**

---

SYMBOLS .....	3
IMPORTANT SAFEGUARDS .....	3
DESCRIPTION OF THE APPLIANCE .....	5
DESCRIPTION OF ATTACHMENTS .....	6
INSTRUCTIONS FOR USE .....	6
Filling the boiler tank before use .....	6
Switching on .....	6
Operation .....	6
Switching off the appliance .....	6
USING WITH DETERGENT .....	7
ATTACHMENTS .....	7
FILLING THE BOILER TANK DURING USE .....	8
CLEANING AND MAINTENANCE .....	8
Cleaning the detergent reservoir .....	8
Emptying and cleaning the inside of the boiler tank .....	8
TROUBLESHOOTING .....	9

## SYMBOLS

The information in this manual is labelled as follows:



DANGER for children



DANGER from electricity



DANGER from other causes



WARNING danger of scalds



IMPORTANT possible damage to materials



Use with detergent

## IMPORTANT SAFEGUARDS

**READ THESE INSTRUCTIONS BEFORE USE.**

**DO NOT THROW AWAY THESE INSTRUCTIONS.**

This appliance conforms to the Directives 2006/95/EC and EMC 2004/108/EC.



**DANGER to children**



- This appliance is not suitable for use by people – including children – with reduced physical, sensorial or mental capabilities; by people with little or no experience or awareness of the appliance, unless carefully supervised or trained in the use of the appliance by a person responsible for their safety.
- It is necessary to supervise children to make sure that they do not play with the appliance.
- When disposing of the appliance as waste, it must be made inoperative by cutting off the power cord. Also remember to make any parts of the potentially hazardous parts of the appliance safe, as there is a risk that children may use them as playthings.
- Packaging elements must not be left in reach of children as they are potentially hazardous.
- The detergent used for this appliance must be kept well out of reach of children.
- Always follow the instructions on the detergent label before use.



**DANGER from electricity**




- Make sure that the power voltage of the appliance corresponds to that of your mains electricity.
- Always connect the appliance to a properly earthed socket.
- In case of using extension leads, these must be suitable for the appliance power to avoid danger to the operator and for the safety of the environment in which the appliance is being used. Extension leads, if not suitable, can cause operating anomalies.
- Never leave the appliance unattended when it is connected to the power mains; unplug it after every use.

- Always switch off the appliance at the main switch and unplug it from the power mains before refilling it.
- Never allow the detergent sprayed from the appliance to come into contact with power sockets and/or other electrical appliances or wires.
- Make sure that hands are dry before using or adjusting the appliance switches, before touching the plug or power connections.



## **DANGER from other causes**




- Never leave the appliance exposed to the elements (rain, sunshine, etc.).
- Never place the appliance on or near to sources of heat.
- Make sure that the power cord does not come into contact with hot surfaces.
-  Never point steam jets in the direction of people, animals or plants or towards appliances that contain electrical parts (e.g. oven interiors).
- Never direct steam jets onto the appliance itself.
- **Never immerse the body of the appliance, plug or power cord in water or other liquids; clean them with a damp cloth.**
- Never use the appliance if the power cord or plug are damaged or if the appliance is faulty / damaged.
- All repairs, including the replacement of the power cord, must only be carried out by an Kenwood Assistance Centre or by technicians authorised by Kenwood, so as to prevent any risks.
- This appliance has been designed for **domestic use only** and may not be used for commercial or industrial purposes.
- During use, the appliance contains pressurised steam: improper use can be dangerous. The appliance is designed for domestic use only, as stated in the manual. The manufacturer cannot accept any liability for damage cause through improper or incorrect use of the appliance.
- When the appliance is not in use, always lock the steam dispensing button with the special cursor.



## **WARNING danger of scalds**



- If the steam button is pressed before the boiler has reached the optimum temperature, then water instead of steam could come out of the nozzle.
- Never touch hot surfaces while using the product. Leave attachments to cool before replacing them.
- **Even when the appliance is not in operation, unplug it from the power mains and leave it to cool before inserting or removing single parts or before cleaning it.**
-  **IMPORTANT:** danger of scalds

NEVER OPEN THE CAP ON THE BOILER TANK DURING USE.

IMPORTANT:

Before unscrewing the safety cap, proceed as follows:

- ✓ switch off the appliance at the main switch and unplug the power cord from the mains socket;
- ✓ release the remaining pressure from the boiler tank, using the steam button on the gun and pointing the jet into a suitable container;
- ✓ leave the appliance to cool for a few minutes;
- ✓ slowly loosen the boiler tank cap, part of the way and wait for a few seconds;
- ✓ unscrew the cap completely and remove it.




## **IMPORTANT possible damage to materials**



- Your Kenwood Steam Cleaner is also ideal for ceramic, marble, vinyl, linoleum and sealed hardwood floors.
- Warning: DO NOT use on sealed wood floors, or timber floors in high traffic areas where the protective coating may have worn out. DO NOT leave the mop in one spot during use or while hot for more than 15 seconds, this could cause the wood grain to rise. When using on surfaces treated with wax, the wax may be removed by the heat and steam action. It is recommended to try the appliance on a small inconspicuous area before use and refer to care instructions from the

flooring manufacturer.

- Not recommended for use on CORK or CORK tiles.
- Kenwood will not accept any responsibility for damage caused to flooring if the above warnings have been ignored.
- Never use in swimming pools containing water.
- Never add scale removers, fragrances, alcohols or detergents to the boiler tank, as these could damage the appliance. We recommend filling with tap water or alternatively, with 50% demineralised water and 50% tap water in areas where the water is very hard.
- Before switching on the appliance, make sure that there is sufficient water inside the boiler tank. If it is necessary to refill the tank during use, proceed as described previously, and following the instructions in the paragraph **"FILLING THE BOILER TANK DURING USE"**.
- If using the measure and/or funnel with detergent, always clean them thoroughly before using them to fill the boiler tank.
- The detergent must only be used in small amounts and only for particularly stubborn stains; excessive amounts could damage the surfaces to be treated. Normal cleaning only requires the steam issued from the appliance. Never, under any circumstances, use cleaning agents containing the following: chlorine, solvents, ammonia or substances marked with an "X" . Always ventilate the area after using cleaning agents.
- Clean the boiler tank at least once a month so as to eliminate any scale residues that might affect the normal operation of the appliance (see the paragraph **"CLEANING AND MAINTENANCE"**).
- Never use the window wiper brush if the surface to be cleaned is cold; the thermal movement could cause the surface to break. In cold seasons, where the temperature is particularly low, pre-heat the glass with steam jets, all over, from a distance of about 40 cm.
- When using for the first time or after a long pause, direct the steam jet into a container to eliminate any excess water.
- Do not threaten the safety of the appliance by using parts that are not original or which have not been approved by the manufacturer.
- Unplug the appliance by gripping the plug firmly and pulling it out of the power socket; never unplug the appliance by pulling on the power cord.
- Any changes to this product not expressly authorised by the manufacturer may make safety devices inoperative and will also render the user's warranty null and void.

## DESCRIPTION OF THE APPLIANCE

Ref.	Description	Ref.	Description
A	Boiler tank cap	H	Detergent reservoir
B	Manual cord winder	I	Detergent reservoir cap
C	Handle	L	Gun nozzle
D	Steam ready light	M	Gun
E	On/off light	N	Lock cursor
F	On/off switch	O	Steam dispenser button
G	Appliance body	P	Detergent dispenser button

## DESCRIPTION OF ATTACHMENTS

Ref.	Description	Ref.	Description
①	Extension nozzle	⑧	Extension tubes
②	Hood	⑨	Attachment bag
③	Round brush	⑩	Funnel
④	Angled nozzle	⑪	Detergent bottle
⑤	Upholstery brush	⑫	Measure
⑥	Window brush	⑬	Floor cloth
⑦	Floor brush	⑭	Upholstery cloth

## INSTRUCTIONS FOR USE

### Filling the boiler tank before use

- Unscrew the boiler tank filler cap (A), and use the funnel (⑩) provided to fill the boiler tank without exceeding the maximum level (1).
- Screw on the boiler tank filler cap (A).
- Fit the required tool (see the "ATTACHMENTS" paragraph) to the gun (M) and only if strictly necessary (e.g. stubborn stains), insert the detergent following the instructions in the paragraph "USING WITH DETERGENT".

### Switching on

- Plug the appliance power cord into the mains electricity and switch on the appliance using the On/off switch (F); the On/off light (E) will switch on, as will the steam ready light (D)(2).
- After a few minutes, the steam ready light (D) will switch off to show that the boiler tank is pressurised and the appliance can now dispense steam.

### Operation

- The steam ready light (D) will switch on and off during use to show that the boiler tank is working.
- To prevent the steam from being dispensed accidentally, the lock cursor (N) must be moved from the left to the right (A); to release the steam function, move the cursor (N) from right to left (A) (3).
- To dispense steam, press the button (O) on the gun (M).
- When using for the first time, it is a good idea to spray the steam jet into a container to get rid of any water residues that might be inside the tube (any water coming out is because of the condensed steam inside the tube). This action needs to be repeated even after a few minutes of appliance inactivity. In any case, when the gun begins to dispense steam, always point the jet downwards to the ground.

**IMPORTANT:** When the appliance is not being used, always lock the steam dispenser button with the cursor (N).

### Switching off the appliance

- To stop dispensing steam, release the dispensing button (O).
- After use, switch off the appliance, using the switch (F) and unplug it from the mains power socket. Clean the attachments and boiler tank as described in the "CLEANING AND MAINTENANCE" section.
- Wind the power cord around the cord rewriter (B) (4).
- Refit the gun (M) over the special handle (C), after placing the slider (N) in the lock position.





## USING WITH DETERGENT




The following steam appliance is fitted with an innovative, integrated detergent function to be used for stubborn dirt removal; it is an additional function and does not replace the use of steam.

- Remove the cap (I) on the appliance body (G), and use the funnel (Ⓓ) provided to fill the appliance's detergent reservoir (5).

**IMPORTANT:** Do not use tools to remove the cap (I) as they might damage it.

**IMPORTANT:** Never add the detergent to the boiler tank. If using the measure and/or funnel with detergent, always clean them thoroughly before using them to fill the boiler tank.

**IMPORTANT:** Use the detergent provided (Ⓙ) or a detergent expressly made for use with “steam cleaners”.

Never, under any circumstances, use cleaning agents containing the following: chlorine, solvents, ammonia or substances marked with an “X” . Always ventilate the area after using cleaning agents.

- Close the cap (I) tightly, pressing it all the way down.
- Press the detergent dispenser button (P) on the gun (M); the detergent will only be dispensed when the button is released (6).
- The detergent does not come out immediately; it is necessary to wait for a few seconds. When using for the first time only, press the button (P) several times to feed the detergent into the dispenser circuit. In this case, prepare a special container to capture it.
- Only use small amounts of detergent and even then, only when there are particularly stubborn stains; excessive amounts of detergent can damage the surface being cleaned. The steam from the appliance is sufficient for normal cleaning.
- Use the steam dispenser button (O) and proceed to clean the surface.
- To clean the detergent reservoir (H), operate the dispenser pump (P) until the reservoir is completely empty, or remove the cap (I) from the reservoir and tilt the appliance to one side.

## ATTACHMENTS

### Extension nozzle ①

With this attachment it is possible to thoroughly clean all those surfaces where stubborn dirt can take hold.

The nozzle can be fitted directly to the gun nozzle (E) or extension tubes (8): after lining up the marks on the gun nozzle (E) and attachment, turn the nozzle 90° clockwise until it locks into place (7).

### Hood ②

This attachment can be fitted to the gun nozzle (E) to protect the end.

### Round brush ③

This attachment is for fitting on the extension nozzle ① and helps to dissolve the most stubborn dirt build up, such as the type that forms on the cook top or in the grout widths between tiles. It can be used to clean bathroom fixtures, sinks, cooker racks, showers and baths, where it removes all traces of scale (8).

### Angled nozzle ④

This attachment can be fitted to the gun nozzle (E) after inserting the cap ② or extension nozzle ①.

It is particularly useful for reaching and sterilising difficult areas, where dirt can build up unseen, on radiators, shutters, and bathroom fixtures, removing it simply and quickly (9).

### Upholstery brush ⑤

The fabric brush can be fitted straight onto the gun nozzle (E) or to the extension tubes (8). When the handy cloth ⑭ is fitted, it is possible to use the brush to remove dust and for daily cleaning of sofas, armchairs, blankets, mattresses and cushions (10). The brush can also be used to freshen up fabrics, removing all creases. In any case, we recommend, when using for the first time and during normal use, to discharge the condensation from the steam into a container so as not to wet the fabrics (11).

**Window brush ⑥**

The fabric brush ⑤ can be fitted with a window wiper: assemble the two attachments, placing the tabs at the base of the fabric brush inside the hooks at the base of the window wiper. Use the window wiper to restore the polished shine to windows, mirrors and gloss surfaces. It is also easy to use on shower cubicle glass, removing the problem of lime scale (12).

**Floor brush ⑦**

This accessory is used on extension tubes ⑧ and it has handy cloth grips that can hold, as well as the cloth provided ⑬, any type of machine washable cloth. To fit the cloth, place the brush in the middle, lift the clips at the ends of the brush, insert a flap of cloth and then release the clips (13).

**Extension tubes ⑧**

The extension tubes snap together and can be easily separated by pressing the release button. They are useful for reaching high surfaces with the window wiper ⑥, using the special extension joint, or they can be used with the floor brush ⑦ (14).

**Attachment bag ⑨**

The appliance comes with a bag for the attachments, which is handy for storage as well as for keeping them close at hand (15).

---

## FILLING THE BOILER TANK DURING USE

---

If the boiler tank should become empty during use, switch off the appliance, unplug it from the mains power and proceed as follows:

- press the steam dispensing button (O) to discharge any residual steam;
- slowly unscrew the boiler tank filler cap (A) waiting a few seconds for the steam to finish before unscrewing it completely. Wait a few minutes before adding water to the boiler tank;
- add more water, making sure to pour it in slowly to prevent new bursts of steam from forming.
- **We recommend waiting at least 3 minutes from the time of unplugging the appliance before adding more water to the boiler tank;**
- firmly screw the boiler tank filler cap (A) back into place;
- plug the appliance to the power mains;
- press the on switch (F).

---

## CLEANING AND MAINTENANCE

---

**Cleaning the detergent reservoir:**

- Press the detergent dispensing button (P) and empty all of the detergent from the appliance into a suitable container or empty the detergent reservoir (H) into a container, making sure to clean it thoroughly with water;
- Remove the cap (I) and fill the detergent reservoir (H) with water;
- Press the button (P) several times to remove all detergent residues. Repeat this operation until only water is dispensed; then tilt the appliance to empty the detergent reservoir (H) of any remaining water.

**Emptying and cleaning the inside of the boiler tank**

**IMPORTANT:** Clean the boiler tank at least once every month so as to remove any scale residues which might affect the normal operation of the appliance.

**IMPORTANT:** Switch off the appliance, unplug it from the mains power and leave it to cool before cleaning out the boiler tank, so as to avoid the risk of scalds.

- Release any pressure remaining in the boiler tank using the steam button (O) on the gun (M), pointing the jet into a suitable container.
- Slowly unscrew the boiler tank filler cap (A) and remove it completely.
- Fill the boiler tank with tap water, shake the appliance and then turn it upside down to empty it.
- Repeat this operation a few times.

**WARNING:** Never add scale removers, vinegar or other perfumed substances to the tank, as these risk damaging the appliance with immediate cancellation of the warranty.

## TROUBLESHOOTING...

PROBLEM	CHECK	POSSIBLE CAUSES	POSSIBLE REMEDY
No steam comes out of the nozzle	Steam ready light (D) on	Cold boiler tank	Wait for the steam ready light (D) to switch off.
	Steam ready light (D) off	No water in the boiler tank	Fill the boiler tank as described in the paragraph <b>"FILLING THE BOILER TANK DURING USE"</b>
	Steam ready light (D) off – Water in the boiler tank	Malfunction	Contact your ASSISTANCE CENTRE
The nozzle is dispensing little steam	Steam ready light (D) on	The boiler tank is cold	Wait for the boiler tank to heat up
No detergent is being dispensed from the nozzle		First-time use	Carry out the procedures described in the paragraph <b>"INSTRUCTIONS FOR USE"</b>
		No detergent in the reservoir	Fill the reservoir
		No apparent cause	Contact the ASSISTANCE CENTRE





