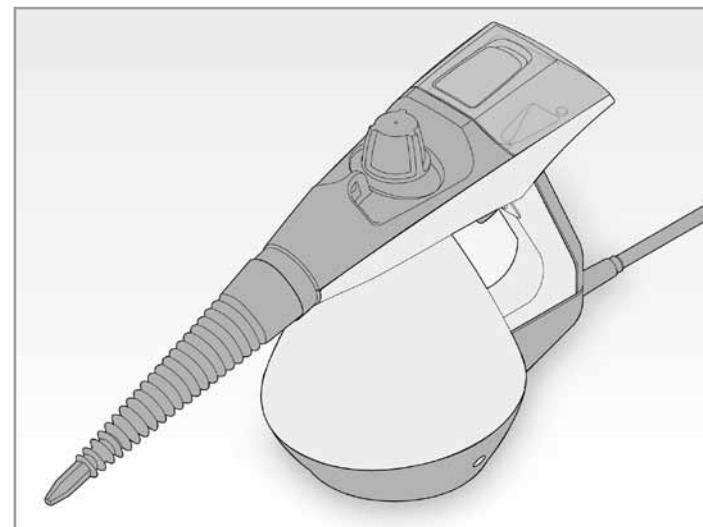


Ariete



SteamJET

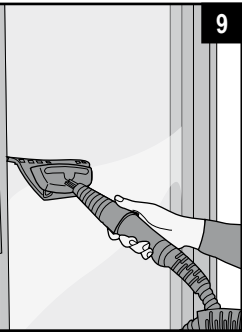
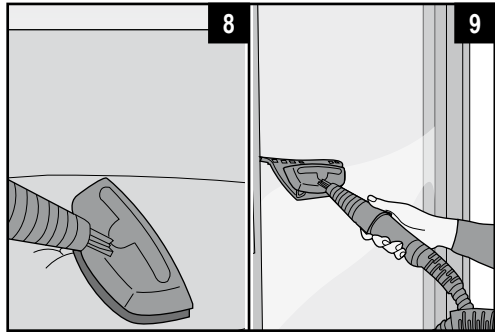
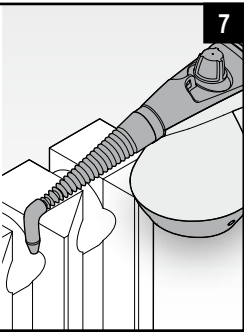
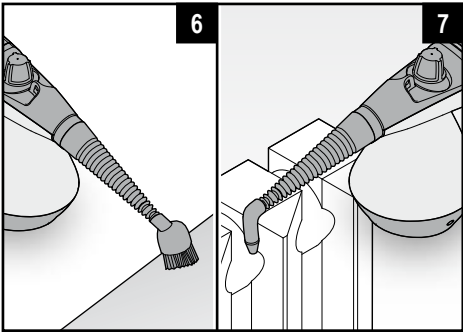
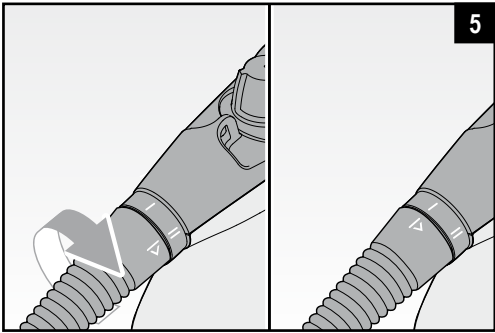
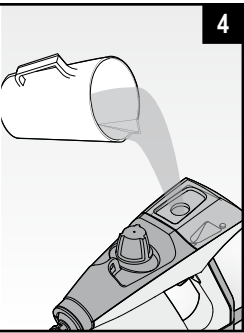
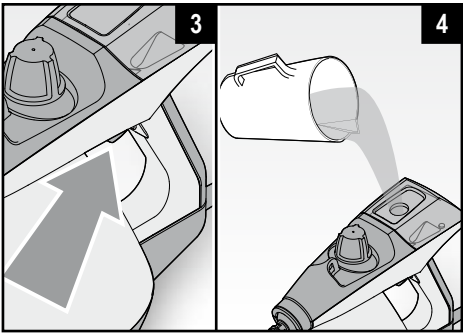
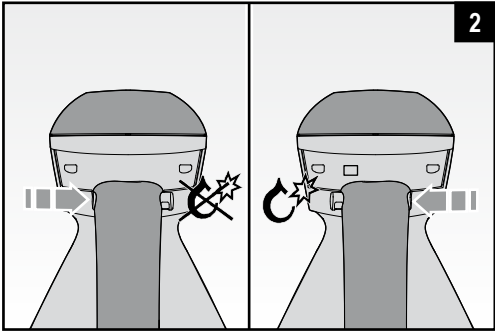
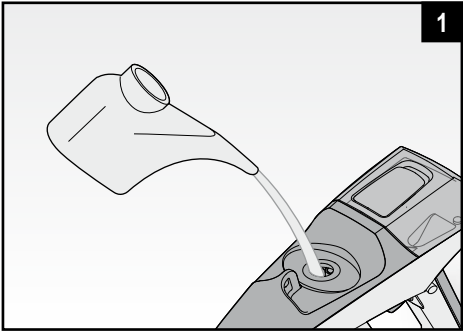
Ariete

Distributed by Tempo (Aust) Pty Ltd
PO Box 6056, Frenchs Forest DC 2086

After Sales Support:
1300 886 649
info@tempo.org



4109









IMPORTANT SAFEGUARDS

READ THESE INSTRUCTIONS BEFORE USE.

DO NOT THROW AWAY THESE INSTRUCTIONS.

SYMBOLS

The information in this manual is labelled as follows:

-  DANGER for children
-  DANGER from electricity
-  DANGER from other causes
-  WARNING danger of scalding
-  IMPORTANT possible damage to materials
-  Use with detergent


DANGER to children

- The appliance can be used by children aged from 8 years and above and persons with reduced physical, sensory or mental capabilities or lack of experience and knowledge if they have been given supervision or instruction concerning use of the appliance in a safe way and understand the hazards involved.
- Children shall not play with the appliance.
- Cleaning and user maintenance shall not be made by children without supervision.
- When disposing of the appliance as waste, it must be made inoperative by cutting off the power cord. Also remember to make any parts of the potentially hazardous parts of the appliance safe, as there is a risk that children may use them as playthings.
- Packaging elements must not be left in reach of children as they are potentially hazardous.
- The detergent used for this appliance must be kept well out of reach of children.
- Always follow the instructions on the detergent label before use.

DANGER from electricity

- Make sure that the power voltage of the appliance corresponds to that of your mains electricity.
- Always connect the appliance to a properly earthed socket.
- In case of using extension leads, these must be suitable for the appliance power to avoid danger to the operator and for the safety of the environment in which the appliance is being used. Extension leads, if not suitable, can cause operating anomalies.
- Never leave the appliance unattended when it is connected to the power mains; unplug it after every use.
- Always switch off the appliance at the main switch and unplug it from the power mains before refilling it.
- Never allow the detergent sprayed from the appliance to come into contact with power sockets and/or other electrical appliances or wires.
- Make sure that hands are dry before using or adjusting the appliance switches, before touching the plug or power connections.
- **RCD:** The installation of a residual current device (safety switch) is recommended to provide additional safety protection when using electrical appliances. It is advisable that a safety switch with a rated residual operating current not exceeding 30mA be installed in the electrical circuit supplying the appliance. See your electrician for professional advice.)


DANGER from other causes

- Never leave the appliance exposed to the elements (rain, sunshine, etc.).
- Never place the appliance on or near sources of heat.
- Make sure that the power cord does not come into contact with hot surfaces.
-  Never point steam jets in the direction of people, animals or plants or towards appliances that contain electrical parts (e.g., oven interiors).
- Never direct steam jets onto the appliance itself.
- **Never immerse the body of the appliance, plug or power cord in water or other liquids; clean them with a damp cloth.**
- Never use the appliance if the power cord or plug are damaged or if the appliance is faulty / damaged.

- All repairs, including the replacement of the power cord, must only be carried out by an authorised service centre, so as to prevent any risks. Contact our Customer Support Centre on 1300 887 649 or info@tempo.org for advice.
- This appliance has been designed for **domestic use only** and may not be used for commercial or industrial purposes.
- During use, the appliance contains pressurised steam: improper use can be dangerous. The appliance is designed for domestic use only, as stated in the manual. The manufacturer cannot accept any liability for damage caused through improper or incorrect use of the appliance.




WARNING danger of scalding

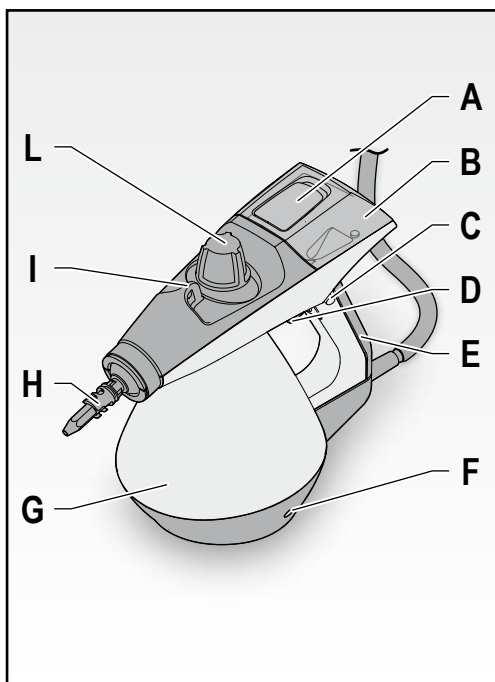
- If the steam button is pressed before the boiler has reached the optimum temperature, then water instead of steam could come out of the nozzle.
- Never touch hot surfaces while using the product. Leave attachments to cool before replacing them.
- **Even when the appliance is not in operation, unplug it from the power mains and leave it to cool before inserting or removing single parts or before cleaning it.**
-  **IMPORTANT:** danger of scalding.
- **NEVER OPEN THE CAP ON THE BOILER TANK DURING USE.**
- **IMPORTANT:** Before unscrewing the cap on the boiler tank, proceed as follows:
 - ✓ disconnect the power cable from plug socket;
 - ✓ bleed out the remaining pressure from the boiler tank, using the steam button on the gun and pointing the jet into a suitable container;
 - ✓ leave the appliance to cool for a few minutes;
 - ✓ slowly loosen the boiler tank cap, part of the way and wait for a few seconds;
 - ✓ unscrew the cap completely and remove it.



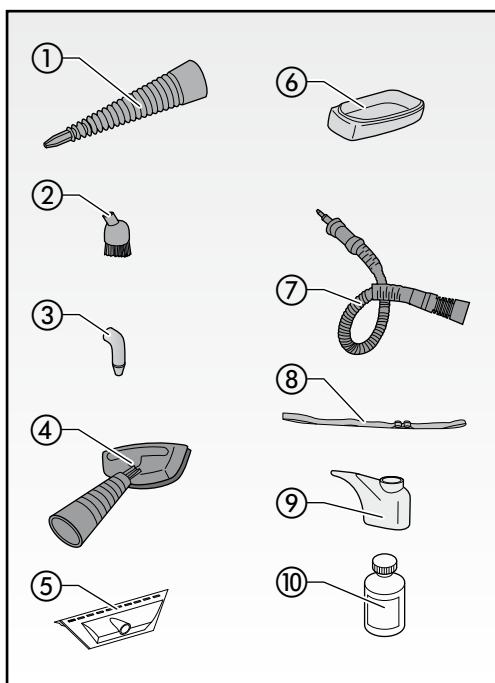
IMPORTANT possible damage to materials

- Before using the product, make sure that all items, surfaces and fabrics to be cleaned are resistant to or compatible with the high temperature of the steam. Specifically, treated terracotta flooring, wooden surfaces or delicate fabrics, such as silk or velvet, should not be treated without first consulting the instructions from the manufacturer and carrying out a test on a small hidden sample part.
- Never use in swimming pools containing water.

- Never add scale removers, fragrances, alcohols or detergents to the boiler tank, as these could damage the appliance. We recommend filling with tap water or alternatively, with 50% demineralised water and 50% tap water in areas where the water is very hard.
- Before switching on the appliance, make sure that there is sufficient water inside the boiler tank. If it is necessary to refill the tank during use, proceed as described previously, and following the instructions in the paragraph **“FILLING THE BOILER TANK DURING USE”**.
- If using the measure and/or funnel with detergent, always clean them thoroughly before using them to fill the boiler tank.
- The detergent must only be used in small amounts and only for particularly stubborn stains; excessive amounts could damage the surfaces to be treated. Normal cleaning only requires the steam issued from the appliance. Never, under any circumstances, use cleaning agents containing the following: chlorine, solvents, ammonia or substances marked with an **“X”** . Always ventilate the area after using cleaning agents.
- Clean the boiler tank at least once a month so as to eliminate any scale residues that might affect the normal operation of the appliance (see the paragraph **“CLEANING AND MAINTENANCE”**).
- Never use the window wiper brush if the surface to be cleaned is cold; the thermal movement could cause the surface to break. In cold seasons, where the temperature is particularly low, pre-heat the glass with steam jets, all over, from a distance of about 40 cm.
- When using for the first time or after a long pause, direct the steam jet into a container to eliminate any excess water.
- Do not threaten the safety of the appliance by using parts that are not original or which have not been approved by the manufacturer.
- Unplug the appliance by gripping the plug firmly and pulling it out of the power socket; never unplug the appliance by pulling on the power cord.
- Any changes to this product not expressly authorised by the manufacturer may make safety devices inoperative and will also render the user's warranty null and void.



| Ref. | Description |
|------|-----------------------------------------|
| A | Detergent filler cap |
| B | Detergent tank |
| C | Detergent use consent cursor (☞ ↔ ☜) |
| D | Steam / detergent dispensing button |
| E | Handle |
| F | On/off light |
| G | Appliance body |
| H | Jointed nozzle |
| I | Strap fastening eyelet |
| L | Boiler tank filler cap |



| Ref. | Description |
|------|------------------|
| ① | Extension nozzle |
| ② | Round brush |
| ③ | Angled nozzle |
| ④ | Upholstery brush |
| ⑤ | Window brush |
| ⑥ | Cloth |
| ⑦ | Flexible hose |
| ⑧ | Strap |
| ⑨ | Measuring cup |
| ⑩ | Detergent bottle |

INSTRUCTIONS FOR USE

Filling the boiler tank before use


- Unscrew the boiler tank filler cap (L), and use one full measuring cup (⑨) to fill the boiler tank with water (**1**).
- Screw on the boiler tank filler cap (L).
- Fit the required attachment (see paragraph “**ACCESSORIES**”) to the nozzle (H) and, only if need be, (ex.: stubborn stains) fill the detergent by following instructions on paragraph “**USING WITH DETERGENT**”.

Switching on

- Connect the plug into the plug socket; the related power indicator light (F) turns on.
- After few minutes the boiler is under pressure and the appliance starts producing steam.

Functioning

The product does not permit simultaneous use of steam and detergent: move from a function to the other by means of the appropriate cursor (C) (**2).**

- To dispense steam, lock the detergent use by moving the cursor (C) towards the sign “”, then press the button (D) on the handle (E) (**3**).
- When using for the first time, it is a good idea to spray the steam jet into a container to get rid of any water residues that might be inside the tube (any water coming out is because of the condensed steam inside the tube). This action needs to be repeated even after a few minutes of appliance inactivity. In any case, when the gun begins to dispense steam, always point the jet downwards to the ground.

Switching off the appliance

- Release the button (D) to stop steam or detergent dispensing.
- After use, unplug the appliance from plug socket. Proceed with cleaning of attachments and boiler as described in paragraph “**CLEANING AND MAINTENANCE**”.



USING WITH DETERGENT

The following steam appliance is fitted with an innovative, integrated detergent function to be used for stubborn dirt removal; it is an additional function and does not replace the use of steam.

- Remove the cap (A) on the tank (B) and, by using the provided funnel, (⑨) fill the appliance with detergent (**4**).



IMPORTANT: Do not use tools to remove the cap (A) as they might damage it.

CAUTION: Never fill the boiler with detergent. In you use the detergent in the measuring cup, always clean it thoroughly before using it for filling the boiler.

IMPORTANT: Use the detergent provided (⑩) or a detergent expressly made for use with “steam cleaners”. Never, under any circumstances, use cleaning agents

containing the following: chlorine, solvents, ammonia or substances marked with an "X" ❗ Always ventilate the area after using cleaning agents.

- Close the cap (A) tightly, pressing it all the way down.
- Activate the detergent function by moving the cursor (C) towards the sign "☒", then press the button (D) on the handle (E); only after releasing the button, detergent is dispensed. The longer you press and hold down the button, the more detergent will be dispensed.
- The detergent does not come out immediately; it is necessary to wait for a few seconds. When using for the first time only, press the button (D) several times to feed the detergent into the dispenser circuit. In this case, prepare a special container to capture it.
- Use small amount of detergent and in case of particularly stubborn stains only; an excessive quantity could make removal difficult. Steam dispensed by the appliance is sufficient for normal cleaning.

ATTACHMENTS

Extension nozzle ①

With this attachment it is possible to thoroughly clean all those surfaces where stubborn dirt can take hold. Insert the attachment onto the nozzle (H) by pressing it towards the appliance fixed part and aligning the notched line on the nozzle with the yellow line on the appliance. Rotate clockwise aligning the appliance line with the two lines located on the appliance fixed part. In this way the attachment remains in the stop middle position (**5**). The appliance is equipped also with an articulation which permits to direct steam or detergent jet towards the most suitable position.

Round brush ②

This attachment can be fitted to the extension nozzle (①), the jointed nozzle (H) or the flexible hose (⑦) and it is useful for removing the most resistant stains, such as those on hob burners or in tile spacing. It can be used to clean bathroom fixtures, sinks, cooker racks, showers and baths, where it removes all traces of scale (**6**).

Angled nozzle ③

This attachment can be fitted to the extension nozzle (①), the jointed nozzle (H) or the flexible hose (⑦). It is particularly useful for reaching and cleaning difficult areas, where dirt can build up unseen, on radiators, shutters, and bathroom fixtures, removing it simply and quickly (**7**).

Upholstery brush ④

The cloth brush can be fitted directly to the flexible hose (⑦). When the handy cloth (⑥) is fitted, it is possible to use the brush to remove dust and for daily cleaning of sofas, armchairs, blankets, mattresses and cushions. The brush can also be used to freshen up fabrics, removing all creases. In any case, we recommend, when using for the first time and during normal use, to discharge the condensation from the steam into a container so as not to wet the fabrics (**8**).

Window brush ④

The fabric brush (⑤) can be fitted with a window wiper: assemble the two attachments, placing the tabs at the base of the fabric brush inside the hooks at the base of the window wiper. Use the window wiper to restore the polished shine to windows, mirrors and gloss surfaces. It is also easy to use on shower cubicle glass, removing the problem of lime scale (9).

Flexible hose ⑦

The flexible hose must be fitted to the jointed nozzle (H). The extension nozzle (①), the round brush (②), the angled nozzle (③) and the cloth brush (④) can be fitted to the hexagonal side at the end of the hose.

Strap ⑧

The appliance is equipped with a strap, whose ends must be both fastened to the appropriate eyelet (I) for easy use.


FILLING THE BOILER TANK DURING USE

If you need to refill the boiler tank during use, unplug the appliance from the plug socket and proceed as follows:

- Press the button (D) to discharge any remaining steam.
- Slowly unscrew the boiler tank filler cap (L), waiting a few seconds for the steam to finish before unscrewing it completely. Wait a few minutes before adding water to the boiler tank.
- Add more water, making sure to pour it in slowly to prevent new bursts of steam from forming.
- **We recommend waiting at least 3 minutes from the time of unplugging the appliance before adding more water to the boiler tank.**
- Firmly screw the boiler tank filler cap (L) back into place.
- Plug the appliance to the power mains.

CLEANING AND MAINTENANCE

Cleaning the detergent reservoir:


- Activate the detergent function by moving the cursor (C) towards the sign “”, then press the button (D) to discharge all detergent from the appliance and let it drain into a container; or empty the detergent tank (B) in a container being careful to clean it thoroughly with water.
- Remove the cap (A) and fill the detergent tank (B) with water.
- Press the button (D) several times in order to remove detergent residues. Repeat the procedure until just water comes out; then turn the appliance upside down and empty the detergent tank (B) by removing any remaining water.

Emptying and cleaning the inside of the boiler tank





IMPORTANT: Clean the boiler tank at least once every month so as to remove any scale residues which might affect the normal operation of the appliance.

CAUTION: unplug the appliance from the plug socket and let it cool down before cleaning the boiler to prevent injuries.

- Lock detergent use by moving the cursor (C) towards the sign “

WARNING: Never add scale removers, vinegar or other perfumed substances to the tank, as these risk damaging the appliance with immediate cancellation of the warranty.

TROUBLESHOOTING...

| PROBLEM | CHECK | POSSIBLE CAUSES | POSSIBLE REMEDY |
|-----------------------------------|---------------------------------------------------------------------------------------------------------------------------------------|----------------------------------------------------------------------------------------------------------------------------------|-------------------------------------|
| Appliance does not dispense steam | Cursor (C) moved on sign “  BOILER FILLING DURING USE" | | |
| Appliance dispenses little steam | | Cursor (C) moved on sign “  INSTRUCTIONS FOR USE" | |
| | No detergent in the reservoir (B) | | Fill the reservoir |
| | No apparent cause | | Contact our Customer Support Centre |

