



Spend a little Live a lot



Spend a little Live a lot

# User Manual

## Contents

Great care has gone into the manufacture of this product and it should therefore provide you with years of good service when used correctly. In the event of product failure within its intended use over the course of the first 3 years after date of purchase, we will remedy the problem as quickly as possible once it has been brought to our attention. In the unlikely event of such an occurrence, or if you require any information about the product, please contact us via our helpline support services, details of which are to be found both in this manual and on the product itself.



**PRODUCED IN CHINA FOR:**  
ALDI STORES LTD. PO BOX 26, ATHERSTONE  
WARWICKSHIRE, CV9 2SH.

ALDI STORES (IRELAND) LTD.  
PO BOX 726, NAAS, CO. KILDARE.  
visit us at [www.aldi.com](http://www.aldi.com)

## AMBIANO COMPACT FOOD PROCESSOR



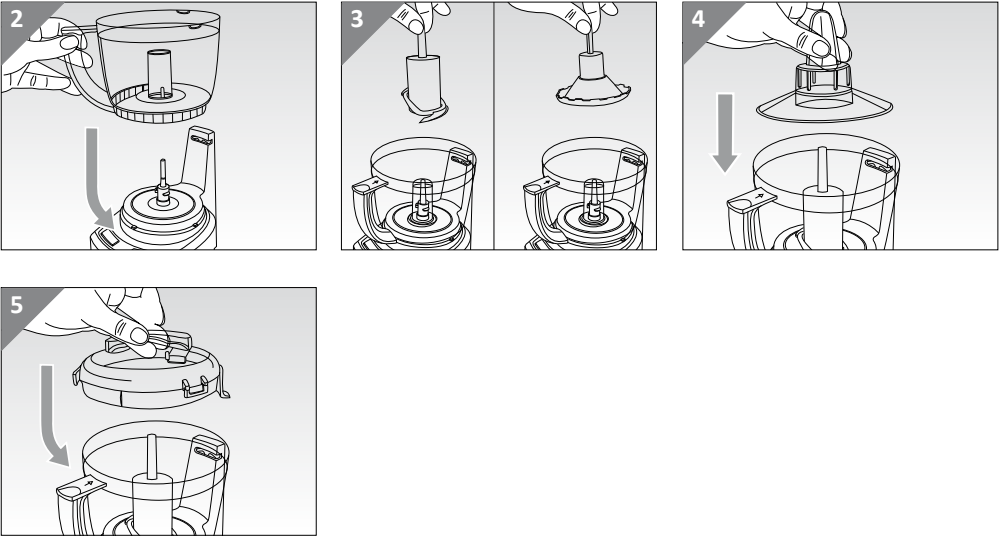
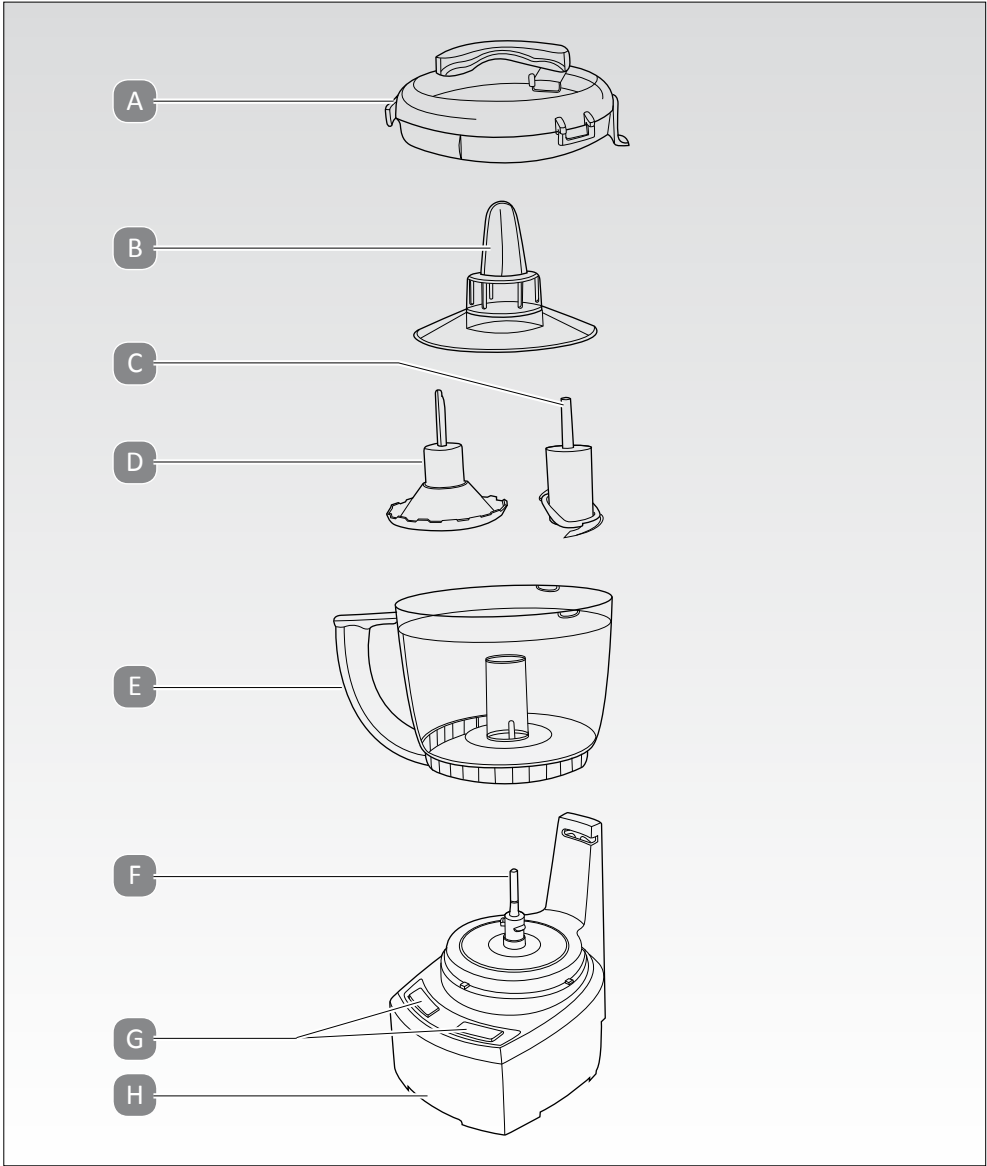
With regard to this manual.....	1
Important safeguards.....	1
Instructions for use.....	4
Tips .....	6
Cleaning and maintenance .....	6
Technical data.....	7
Disposal of waste.....	7
Warranty card.....	8
Warranty conditions.....	9

### AFTER SALES SUPPORT

GB 01924 481053  
IRE 014968036 / 014963993  
GB customerservice@jaleno.com  
IRE kenilworthelec@eircom.net

Model: 1767 Product Code: 68074 01/16





## Description of the appliance

- A Lid
- B Reducer for small food amounts
- C Chopping blade
- D Whipping disc
- E Bowl
- F Motor shaft
- G Operating buttons (two rotation directions)
- H Appliance body

**WITH REGARD TO THIS MANUAL**

Even if you are familiar with this type of product please read these warnings carefully and use the appliance only for the use it is designed for in order to prevent accidents and damage. Keep this manual close by for future consultation. If you should decide to give this appliance to other persons, please remember to also include these instructions.

The information provided in this manual is marked with the following symbols indicating:



Danger for children



Danger from electricity



DANGER from other causes



IMPORTANT, possible damage to materials

**IMPORTANT SAFEGUARDS****READ THESE INSTRUCTIONS BEFORE USE.****ALWAYS KEEP THESE INSTRUCTIONS.**

This appliance conforms to the directives 2006/95/EC and EMC 2004/108/EC, and to the regulations (EC) No. 1935/2004 of 27/10/2004 regarding material in contact with foods. To dispose of the product correctly according to European Directive 2012/19/EU, please refer to and read the provided information enclosed with the product.

**Danger for children**

1. This appliance is not intended for use by persons with reduced physical, sensory or mental capabilities, or lack of experience and knowledge, unless they have been given supervision or instruction concerning the use of the appliance by a person responsible for their safety.
2. This appliance shall not be used by children. Keep the appliance and its cord out of reach of children.
3. Children shall not play with the appliance.
4. When disposing of the appliance as waste, it must be made inoperative by cutting off the power cord. Ensure the severed power cord is disposed of properly as it represents a serious safety hazard. Also remember to make any parts of the potentially hazardous parts of



the appliance safe, as there is a risk that children may use them as playthings.

5. Packaging elements must not be left in reach of children as they are potentially hazardous



### **Danger from electricity**

6. Make sure that the voltage on the appliance rating plate corresponds to that of the local mains supply.
7. Never leave the appliance unattended when connected to the power supply; unplug it after every use.
8. If using an extension lead, these must be suitable for the appliance power to avoid danger to the operator and for the safety of the environment in which the appliance is being used. Extension leads, if not suitable, can cause operating anomalies.



### **Danger from other causes**

9. Always place the appliance on a flat, level surface during use.
10. Always unplug the power cord from the mains supply before fitting or removing attachments or before cleaning the appliance.
11. Always make sure that your hands are thoroughly dry before using or adjusting the switches on the appliance, or before touching the power plug or power connections.
12. Always disconnect the appliance from the supply if it is left unattended and before assembling, disassembling or cleaning.
13. Do not touch any moving parts.
14. To prevent personal injuries and appliance damage, always keep hands and kitchenware out of the area of the operating blades and discs.
15. Blades are sharp, handle them with care.



### **Important, Possible damage to materials**

16. Never place the appliance on or close to sources of heat.

17. Never leave the appliance exposed to the elements (rain, sun, etc....).
18. Make sure that the power cord does not come into contact with hot surfaces.
19. Never place the appliance body, plug or power cord in water or other liquids; always wipe clean with a damp cloth only.
20. To unplug the appliance, grip the plug and remove it directly from the power socket. Never pull the power cord to unplug the appliance.
21. Do not use the appliance if the power cord or plug are damaged or if the appliance itself is faulty; all repairs, including substitution of power cord, must be carried out exclusively by a service centre or by authorised technicians in order to avoid all risks.
22. Do not affect the safety of the appliance by using parts that are not original or which have not been approved by the manufacturer.
23. This appliance is designed for HOME USE ONLY and may not be used for commercial or industrial purposes.
24. Any changes to this product that have not been expressly authorised by the manufacturer may lead to the user's guarantee being rendered null and void.
25. Attention: insert the blade before food. Before removing the lid, wait for the blade to stop completely and always unplug the appliance first.
26. Never operate the appliance when empty.
27. Do not use the appliance if the blade is damaged.
28. Do not use the appliance to process overly hard food (such as ice cubes or meat with bone).
29. Do not move the appliance using the bowl as its handle is not suitable to move the appliance.
30. Do not remove food from the sides of the bowl while the appliance is operating. Switch the appliance off, unplug it, wait for the blade to stop completely and always use a spatula.
31. The product was designed to work only when the lid and the bowl are assembled properly. If it does not operate correctly, contact an authorised service centre.



## INSTRUCTIONS FOR USE

### ATTENTION


The appliance is equipped with an interlock device, which prevents functioning when the lid (A) is not properly located and the bowl (E) is not properly inserted.

### ATTENTION

Before using the appliance, clean all parts that will be in contact with food using a cloth with warm water and a mild detergent. Dry thoroughly.

### ATTENTION

Before cleaning the appliance or removing or installing attachments, make sure it is unplugged.

- Put the bowl (E) onto the motor shaft (F) of the appliance body (H) with the handle on the left corner and lock it by rotating it counterclockwise until it locks in the middle (Fig. 2).
- When using the appliance in the chopping mode, mount the metal blade (C) into the bowl (E), pressing it downwards until it locks, otherwise mount the appropriate plastic disc (D) for whipping (Fig. 3).
- Cut food into small pieces (1.5 x 1.5 cm) and insert it into the bowl (E) or, insert the ingredients for kneading. In case of a small amount of ingredients or, for instance, walnut grinding, insert the reducer (B) on the blade (C) Fig. 4.
- Insert the lid (A) onto the bowl (E) by aligning the handle to the sign . Lock the lid by rotating it counterclockwise so that its rear flap perfectly engages in the appliance body slot (Fig. 5).
- Plug the appliance in.
- Switch the appliance on by keeping the starting button pressed (G).  
For best results, keep it pressed for a very short time (2/3 seconds).

**Note: The double rotation direction permits to use the same appliance to knead, mix, grind.**

- Use the right starting button (G) for chopping. Use the reverse mode, left starting button (G), for mixing and kneading.
- After operation or if it is required to add food during functioning, release the button (G) and unplug the appliance.
- For a smoothly chopped result, if necessary, remove food from the bowl sides and bring it to the centre using a spatula, after having switched the appliance off and unplugging it.

**⚠ CAUTION**

Blades are sharp, handle them with care.

**⚠ ATTENTION**

Do not insert food above the max level indicated on the bowl (E).

**⚠ ATTENTION**

Make sure the lid is properly locked before starting the appliance.

**⚠ ATTENTION**

Do not operate the appliance continuously for more than 30 seconds. After 30 seconds use, wait for 2 minutes before using the appliance again.

**⚠ CAUTION**

Do not remove food from the sides of the bowl while the appliance is operating. Switch the appliance off and then unplug it.

**⚠ CAUTION**

To prevent personal injuries and appliance damage, always keep hands and kitchenware out of the operating area of the blades and discs.

**⚠ CAUTION**

Do not use your fingers to remove food from the sides of the bowl while the appliance is functioning. Always use the appropriate spatula after the appliance has stopped rotating and has been switched off and unplugged.

## TIPS

### **ATTENTION**

**While preparing food for infants or children, always check the ingredients are properly homogenized before giving them to the child.**

- When liquid ingredients are mixed, never fill the bowl above halfway.
- Do not excessively process some kinds of food, for instance dried fruit, bread, biscuits, and cooked/raw meat. Stop frequently and check its consistency.
- Some spices, among which cloves and cumin, may damage the appliance plastic, therefore it is not advisable to process such items.
- For better results, process small amounts of food at a time.
- Before processing dried fruit, breadcrumbs, etc., make sure the food, the blade, the bowl and the lid are completely dry.

## CLEANING AND MAINTENANCE

- Remove all attachments used, by dismantling in the opposite way compared to the assembly operations previously described.
- To avoid damage to the blade, clean it under running water. All other attachments may be washed in the top part of the dishwasher at a max. temperature of 50°C/ 122°F.
- Use a slightly damp cloth for cleaning the appliance body (H).

### **CAUTION**

**Blades are sharp, handle them with care.**

### **ATTENTION**

**After cleaning, let all parts completely dry before re-assembly.**



## TECHNICAL DATA

Nominal voltage: 220/240V~  
Nominal frequency: 50/60Hz  
Nominal power: 220W  
Protection class: II

## DISPOSAL OF WASTE



The product packaging is made of recyclable materials. The packaging material can be taken to public recycling collection points.



**Old appliances do not belong in household waste!** To comply with current legislation, old appliances, having reached the end of their useful lives, should be taken to a disposal facility where they can be sorted. In this way, any valuable material contained in the old appliances can be recycled and the environment protected.

Responsible local authorities or their waste disposal operators can provide further information.



**WARRANTY CARD****Compact Food Processor****Your personal details:**

Name \_\_\_\_\_

Address \_\_\_\_\_

\_\_\_\_\_

 \_\_\_\_\_ Email \_\_\_\_\_

Date of purchase\* \_\_\_\_\_

\* We recommend you keep the receipt with this warranty card

Location of purchase \_\_\_\_\_

**Description of malfunction:****Return your completed warranty card to:**

Jaleno Europe Limited  
Roe Head House  
Far Common Road  
Mirfield  
West Yorkshire  
WF14 0DQ  
England

Kenilworth Electrical  
253 Harolds Cross Road,  
Dublin, Ireland  
kenilworthelec@eircom.net

**AFTER SALES SUPPORT**

GB 01924 481053

IRE 014968036 / 014963993



GB customerservice@jaleno.com

IRE kenilworthelec@eircom.net

MODEL: 1767 PRODUCT CODE: 68074, 01/16

**3****YEAR WARRANTY**

## Warranty conditions

Dear Customer,

**Warranty period:**           **3 years from date of purchase.**  
**6 months** for wear parts and consumables under normal and proper conditions of use (e.g. rechargeable batteries).

**Costs:**                       Free repair/exchange or refund.  
No transport costs.

**Hotline:**                   No additional charge for fixed network calls.

**ADVICE:** Please contact our service hotline by phone, e-mail or fax before sending in the device. This allows us to provide support in the event of possible operator errors.

**In order to make a claim under the warranty, please send us:**

- the original receipt and the warranty card properly completed.
- the product with all components included in the packaging.

**The warranty does not cover** damage caused by:

- **Accident or unanticipated events** (e.g. lightning, water, fire).
- **Improper use or transport.**
- **Disregard of the safety and maintenance instructions.**
- Other **improper treatment or modification.**

After the expiry of the warranty period, you still have the possibility to have your product repaired at your own expense. If the repair or the estimate of costs is not free of charge you will be informed accordingly in advance.

This warranty does not affect your statutory rights.

