



Spend a little Live a lot



Spend a little Live a lot

# User Manual

## Contents

Great care has gone into the manufacture of this product and it should therefore provide you with years of good service when used correctly. In the event of product failure within it’s intended use over the course of the first 3 years after date of purchase, we will remedy the problem as quickly as possible once it has been brought to our attention. In the unlikely event of such an occurrence, or if you require any information about the product, please contact us via our helpline support services, details of which are to be found both in this manual and on the product itself.



**PRODUCED IN CHINA FOR:**  
ALDI STORES LTD. PO BOX 26, ATHERSTONE  
WARWICKSHIRE, CV9 2SH.

ALDI STORES (IRELAND) LTD.  
PO BOX 726, NAAS, CO. KILDARE.  
visit us at [www.aldi.com](http://www.aldi.com)

### AFTER SALES SUPPORT

**GB** 01924 481053 **GB** customerservice@jaleno.com  
 **IRE** 014968036/014963993 **IRE** kenilworthelec@eircom.net

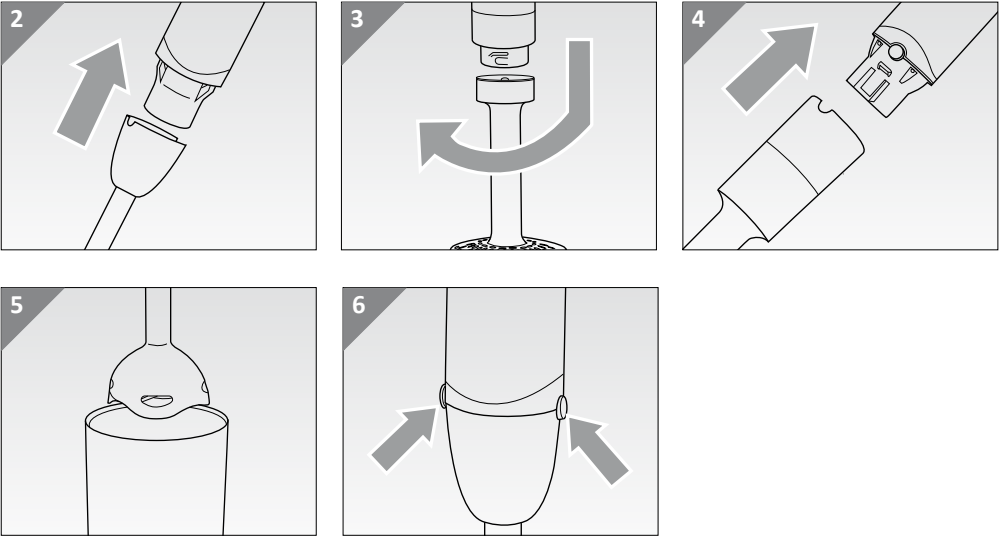
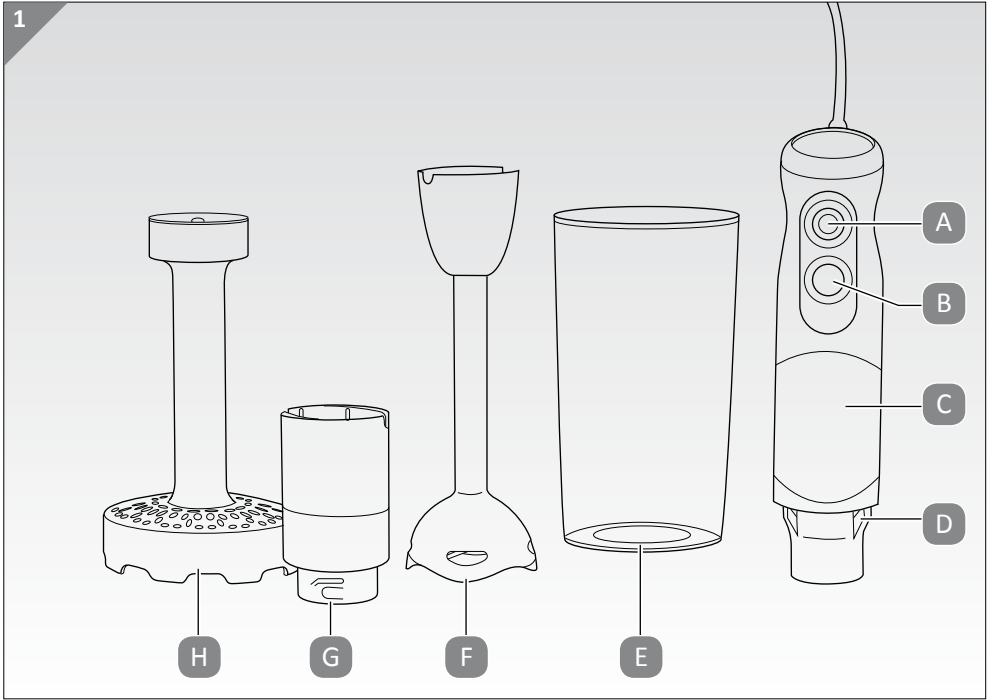
Model: 888 Product Code: 70837 07/2016



## AMBIANO STICK BLENDER WITH POTATO MASHER



With regard to this manual.....	1
Important safeguards.....	1
Instructions for use.....	4
Cleaning and maintenance .....	6
Technical data.....	6
Disposal of waste.....	6
Warranty card.....	7
Warranty conditions.....	8



### Description of the appliance

- A Speed I button
- B Turbo speed button
- C Power base
- D Release buttons
- E Graduated container
- F Hand blender shaft
- G Support for potato masher attachment
- H Potato masher attachment

**WITH REGARD TO THIS MANUAL**

Even if you are familiar with this type of product please read these warnings carefully and use the appliance only for the use it is designed for in order to prevent accidents and damage. Keep this manual close by for future consultation. If you should decide to give this appliance to other people, remember to also include these instructions.

The information provided in this manual is marked with the following symbols indicating:



Danger for children



Danger from electricity



DANGER from other causes



IMPORTANT, possible damage to materials

This manual can be available in electronic format on website.

**IMPORTANT SAFEGUARDS**

**READ THESE INSTRUCTIONS BEFORE USE.**

**ALWAYS KEEP THESE INSTRUCTIONS.**

**COMPLIANCE TO EU DIRECTIVES**

This appliance conforms to the directives 2014/35/EU, EMC 2014/30/EU, 2011/65/EU and to the regulations (EC) No. 1935/2004 of 27/10/2004 regarding material in contact with foods. To dispose of the product correctly according to European Directive 2012/19/EU, please refer to and read the provided information enclosed with the product.

**Danger for children**

1. Appliances can be used by persons with reduced physical, sensory or mental capabilities or lack of experience and knowledge if they have been given supervision or instruction concerning use of the appliance in a safe way and if they understand the hazards involved.
2. This appliance shall not be used by children. Keep the appliance and its cord out of reach of children.
3. Children shall not play with the appliance.
4. When disposing of the appliance as waste, it must be made inoperative by cutting off the power cord. Also remember to make any potentially hazardous parts of the appliance safe, as there is a risk that



children may use them as playthings.

5. Packaging elements must not be left in reach of children as they are potentially hazardous.



### **Danger from electricity**

6. Make sure that the voltage on the appliance rating plate corresponds to that of your local mains electricity supply.
7. Never leave the appliance unattended when connected to the power supply; unplug it after every use.
8. Make sure that the power cord does not come into contact with hot surfaces.
9. It is not recommended to use this appliance in conjunction with an extension cord.



### **Danger from other causes**

10. Always unplug the power cord from the electricity mains before fitting or removing attachments or before cleaning the appliance.
11. Always make sure that your hands are thoroughly dry before using or adjusting the switches on the appliance, or before touching the power plug or power connections.
12. Always disconnect the appliance from the supply if it is left unattended and before assembling, disassembling or cleaning.
13. Keep the power cord well away from sharp edges. Do not wind the power cord around the appliance.
14. Do not touch any moving parts.
15. Do not insert hands or metal utensils (forks, knives, etc.) into the various attachments while operating the appliance.
16. Keep long hair or loose clothing away from the appliance while the blender is operating.
17. Blades are sharp, handle them with care.





### **Important, Possible damage to materials**

18. Never place the appliance on or close to sources of heat.
19. Never leave the appliance exposed to the elements (rain, sun, etc....).
20. Never place the appliance body, plug or power cord in water or other liquids; always wipe clean with a damp cloth only.
21. To unplug the appliance, grip the plug and remove it directly from the power socket. Never pull the power cord to unplug the appliance.
22. Do not use the appliance if the power cord or plug are damaged or if the appliance itself is faulty; all repairs, including substitution of power cord, must be carried out exclusively by an assistance centre or by authorized technicians in order to avoid all risks.
23. Do not affect the safety of the appliance by using parts that are not original or which have not been approved by the manufacturer.
24. Make sure that the power base is not switched on before fitting or removing attachments, when cleaning the appliance or when it is not in use.
25. This appliance is designed for HOUSEOLD USE ONLY and may not be used for commercial or industrial purposes.
26. Any changes to this product that have not been expressly authorised by the manufacturer may lead to the user's guarantee being rendered null and void.
27. Do not use the appliance in case of damaged blades.
28. This appliance has been designed for use within a time limit of 1 minute max. Switch off the appliance after 1 minute in case of liquid foods and after 30 seconds in case of solid foods. Leave the appliance for at least 30 minutes at room temperature before using it again to avoid overloading the motor.
29. If the blade set does not rotate or has difficulty in rotating, to avoid causing any damage to the appliance, switch it off immediately and unplug it from the mains power. Make sure that there is nothing to block the blade in the container or that the container is not too full.



## INSTRUCTIONS FOR USE

### ATTENTION

Make sure that the power base (C) is switched off before fitting or removing attachments, when cleaning the appliance or when it is not in use.

### ATTENTION

Before using the appliance, clean all parts that will be in contact with food using a cloth with warm water and a mild detergent. Dry thoroughly.

### ATTENTION

**DO NOT immerse the Power Base, power cord or mains plug in water or any other liquid.**

### Using the appliance

- Attach the shaft (F) onto the power base (C): put the two parts together, by aligning the slots with the release buttons (D), and insert the shaft (F) slightly pressing it on the power base (C) until it locks (Fig. 2).
- The hand blender is a useful appliance for preparing sauces, soups, mayonnaise, baby food and shakes.
- The hand blender can be used with the provided graduated container (E) or put directly into the saucepan containing food, after having removed it first from the heat to prevent overheating (Fig. 5). To keep food from splashing during blending operations, we recommend using containers with high sides and switching off the appliance while it is still inside the container with the food. We also recommend using the Turbo (B) function as this not only offers better results, it also prevents the appliance motor from overheating. Do not use to blend boiling foods to avoid all risk of burns and scalds.

After switching off, the blade on the handheld blender will continue to rotate. Wait for the blade to stop before removing the blender from the foods, then continue with food preparation, using the appliance.

- Once the appliance is assembled, start it by pressing the speed I button (A). After this, and according to the type of food being processed, it will be possible to pass to the higher speed by pressing the Turbo button (B).

### Using the potato masher attachment

- Assemble the potato masher attachment (H) on its support (H), by rotating clockwise until it locks (Fig. 3).
- Mount the potato masher attachment onto the power base (C): put the two parts together, by aligning the slots with the release buttons (D), and insert the attachment by slightly pressing it on the power base (C) until it locks (Fig. 4).
- Use the appliance with the potato masher attachment immersed directly into a suitable container containing the cooked vegetables.

### CAUTION

**For a proper use of the attachment, the potatoes must be still hot, otherwise they cannot be mashed and the motor may be damaged.**

- For disassembling the hand blender shaft (F) and the potato masher attachment (H) with its support (G), press the two release buttons (D) on the power base (Fig. 6).
- Remove the potato masher attachment (H) from its support (H), by rotating it clockwise.

### CAUTION

**Blades are sharp, handle them with care.**

### ATTENTION

**If the appliance should fail to operate, make sure that the attachments have been fitted correctly.**

### ATTENTION

**Before removing the power base, wait for the blades to have stopped completely and then unplug the appliance from the power mains.**

### CAUTION

**To prevent personal injuries and appliance damage, always keep hands and kitchenware away from the blades when the appliance is operating.**

## CLEANING AND MAINTENANCE

### CAUTION

Never immerse the power base, plug or power cord in water.

### ATTENTION

**Make sure that the power base is not switched on at the mains supply before fitting or removing attachments, when cleaning the appliance or when it is not in use.**

- Remove the attachments from the power base (C) by following the assembly process in reverse order.
- The power base (C) can be wiped clean with a damp cloth.
- The attachments can be cleaned in the top rack of a dishwasher.
- Remove any food residue from the potato masher attachment using a plastic spatula to avoid scratching the stem or damaging the blade.
- Never clean the appliance using sharp or abrasive items or harsh chemicals.

## TECHNICAL DATA

Nominal voltage: 220-240V

Nominal frequency: 50/60Hz

Nominal power: 800 W

## DISPOSAL OF WASTE



**The product packaging is made of recyclable materials. The packaging material can be taken to public recycling collection points.**



**Old appliances do not belong in household waste!** To comply with current legislation, old appliances, having reached the end of their useful lives, should be taken to a disposal facility where they can be sorted. In this way, any valuable material contained in the old appliances can be recycled and the environment protected. Responsible local authorities or their waste disposal operators can provide further information.



## AFTER SALES SUPPORT



**WARRANTY CARD****Stick blender  
with potato masher****Your personal details:**

Name \_\_\_\_\_

Address \_\_\_\_\_  
\_\_\_\_\_  
\_\_\_\_\_

Email \_\_\_\_\_

Date of purchase\* \_\_\_\_\_

\* We recommend you keep the receipt with this warranty card

Location of purchase \_\_\_\_\_

**Description of malfunction:****Return your completed warranty card to:**

**Jaleno Europe Limited**  
Roe Head House  
Far Common Road  
Mirfield  
West Yorkshire  
WF14 0DQ  
England

**Kenilworth Electrical**  
253 Harolds Cross Road,  
Dublin, Ireland  
kenilworthelec@eircom.net

**AFTER SALES SUPPORT**

GB 01924 481053

IRE 014968036 / 014963993



GB customerservice@jaleno.com

IRE kenilworthelec@eircom.net

MODEL: 888 PRODUCT CODE: 70837, 07/2016

**3****YEAR WARRANTY**

## Warranty conditions

Dear Customer,

The **ALDI warranty** offers you extensive benefits in addition to your statutory rights:

**Warranty period:**        **3 years from date of purchase.**  
                                 **6 months** for wear parts and consumables under  
                                 normal and proper conditions of use  
                                 (e.g. rechargeable batteries).

**Costs:**                      Free repair/exchange or refund.  
                                 No transport costs.

**Hotline:**                      No additional charge for fixed network calls.

**ADVICE:** Please contact our service hotline by phone, e-mail or fax before sending in the device. This allows us to provide support in the event of possible operator errors.

**In order to make a claim under the warranty, please send us:**

- the original receipt and the warranty card properly completed.
- the product with all components included in the packaging.

**The warranty does not cover** damage caused by:

- **Accident or unanticipated events** (e.g. lightning, water, fire).
- **Improper use or transport.**
- **Disregard of the safety and maintenance instructions.**
- **Other improper treatment or modification.**

After the expiry of the warranty period, you still have the possibility to have your product repaired at your own expense. If the repair or the estimate of costs is not free of charge you will be informed accordingly in advance.

This warranty does not affect your statutory rights.