



User Manual

Spend a little Live a lot

WITH
**QUICK
START
GUIDE**

EASY
HOME

HANDHELD STEAM CLEANER



**Product
Info**



www.aldi.co.uk

+ VIDEO

QR codes take you where you want to go quickly and easily

Whether you require **product information**, **spare parts** or **accessories**, details on **warranties** or **aftersales services**, or if you want to watch a **product demonstration video**, our QR codes will take you there in no time at all.

What is a QR code?

A QR code (QR = Quick Response) is a type of matrix that can be read with a smartphone camera and that contains a link to a website or contact details, for example.

Advantage: You do not need to manually enter a website address or contact details.

This is how it works

To scan the QR code, all you need is a smartphone with QR code reader software and an internet connection.* This type of software can be downloaded for free from your app store.

Try it out now

Just scan the QR code with your smartphone and find out more about the Aldi product you have purchased.*

Your Aldi Service Portal

All details mentioned above can also be found in the Aldi Service Portal at www.aldi.co.uk.

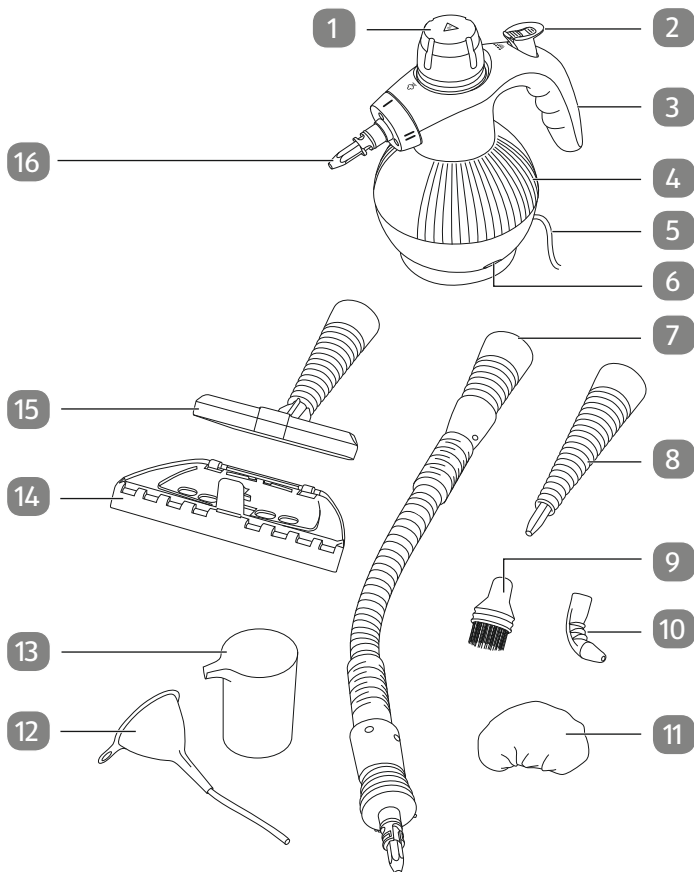


* Depending on your tariff plan you may be charged for the connection.

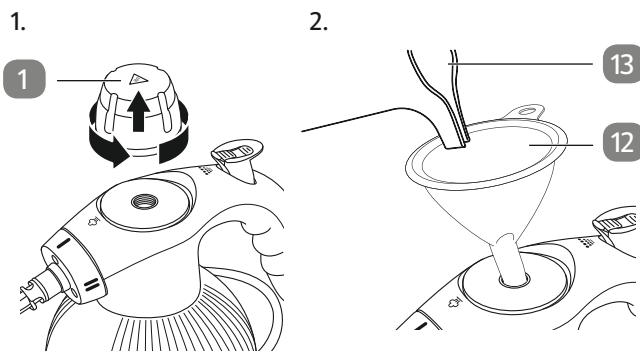
Contents

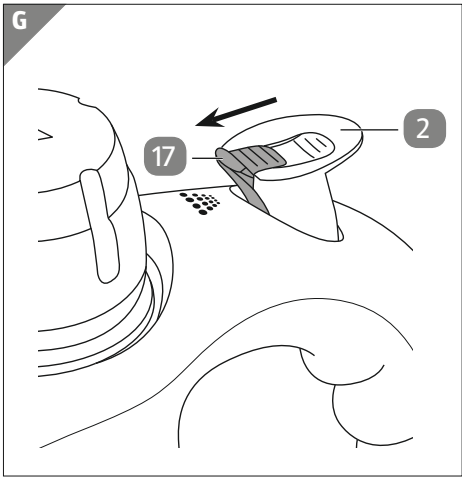
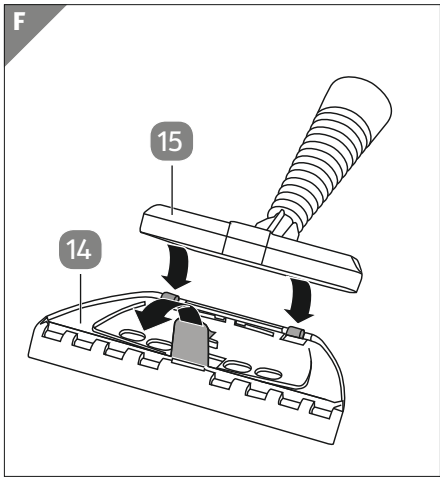
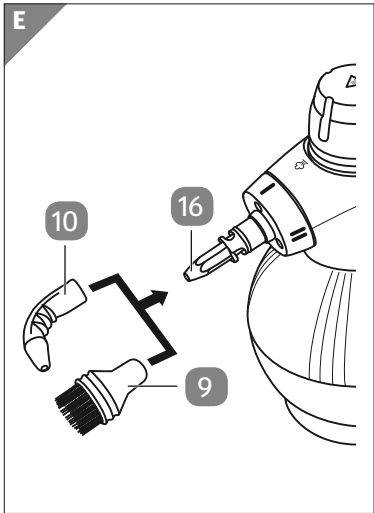
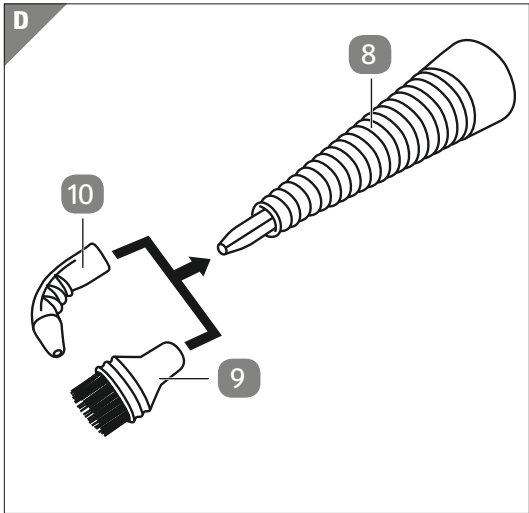
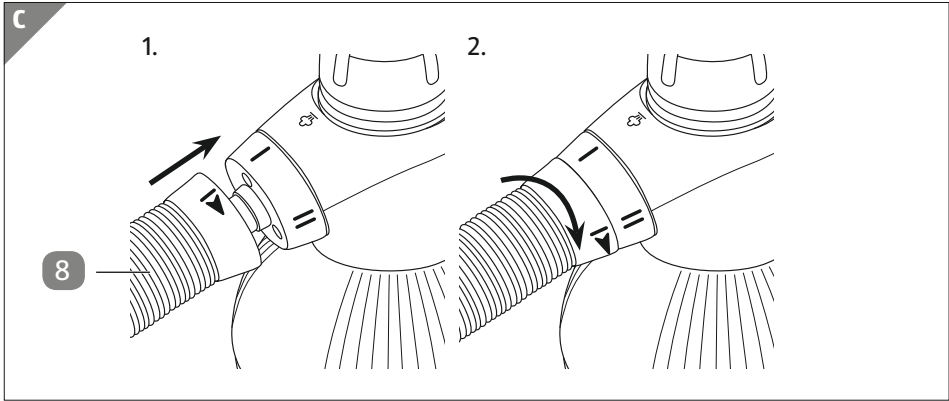
Overview	4
Use.....	5
Product contents/device parts.....	6
Safety	7
Explanation of symbols	7
Safety notes	8
Quick start guide.....	14
General information.....	16
Reading and storing the instruction manual	16
Proper use.....	16
Checking the steam cleaner and product contents	16
Filling the boiler	17
Accessories	18
Attaching accessories	18
Straight nozzle	18
Round brush and curved nozzle	19
Flexible hose, textile brush, fabric cover and glass cleaner	19
Operation.....	19
Filling the boiler during use	20
Emptying the boiler after use	21
Cleaning and maintenance.....	21
Storage	22
Declaration of conformity.....	22
Technical data	23
Disposal.....	23
Disposing of the packaging	23
Disposing of old devices	23
Warranty card	25
Warranty conditions.....	26

A



B





Product contents/device parts

- 1 Safety closure
- 2 Steam button
- 3 Handle
- 4 Boiler
- 5 Mains cord
- 6 Power indicator light
- 7 Flexible hose
- 8 Straight nozzle
- 9 Round brush
- 10 Curved nozzle
- 11 Fabric cover
- 12 Funnel
- 13 Measuring cup
- 14 Glass cleaner
- 15 Textile brush
- 16 Steam nozzle
- 17 Safety lock

Safety

Explanation of symbols

The following symbols and signal words are used in this instruction manual, on the steam cleaner or on the packaging.

WARNING!

This signal symbol/word designates a hazard with moderate degree of risk which may lead to death or severe injury if not avoided.

CAUTION!

This signal symbol/word designates a hazard with low risk that, if not avoided, may result in minor or moderate injury.

NOTICE!

This signal word warns against potential damages to property.



This symbol provides you with useful supplementary information on assembly or use.



Declaration of conformity (see chapter “Declaration of conformity”):
Products marked with this symbol meet all applicable Community regulations for the European Economic Area.



WARNING! Burn hazard due to hot steam.



Burn hazard! Warning of hot surface!



This symbol indicates that this type of packaging can be recycled through kerbside collection programs.

Safety notes

IMPORTANT PROTECTIVE MEASURES

When using electrical devices, fundamental protective measures should always be complied with, including the following notes.

READ THESE INSTRUCTIONS BEFORE USE.

DO NOT THROW THESE INSTRUCTIONS AWAY.

WARNING!

Risk of electric shock!

A faulty electrical installation, excessive mains voltage or incorrect operation may result in an electric shock.

- Only connect the steam cleaner to a properly installed socket with an earthing contact.
- Make sure that the voltage of the socket corresponds to the voltage data on the nameplate.
- Do not use extension cords.
- Only connect the steam cleaner to an easily accessible socket so that you can quickly pull the mains plug in an emergency.
- Do not leave the steam cleaner unattended if it is connected to the socket.
- Make sure that your hands are dry before you use the steam cleaner and before you touch the mains plug or power connections.
- Do not use the steam cleaner if the housing or mains cord is defective or the steam cleaner exhibits other visible damages.
- In the event of damage, only have the steam cleaner replaced by the manufacturer, its customer service team or a similar qualified person to avoid risks.
- Pull the mains plug out of the socket:
 - before you fill the steam cleaner with water,
 - before you clean the steam cleaner,
 - if an error occurs,
 - during a storm,
 - when you are no longer using the steam cleaner.



⚠ WARNING!

Danger for children and persons with impaired physical, sensory or mental capacities (e.g. partially disabled persons, older persons with reduced physical and mental capacities) or lack of experience and knowledge (e.g. older children).

- The steam cleaner may be used by persons with impaired physical, sensory or mental capacities or those lacking experience and knowledge if they are supervised or have been instructed in how to safely use the steam cleaner and have understood the risks associated with operating it.
- The steam cleaner must not be used by children.
- Keep the steam cleaner and the corresponding mains cord away from children during use and while the steam cleaner cools down.
- Ensure that children do not play with the steam cleaner.
- Ensure that children do not play with the packing film. They may get caught in it when playing and suffocate.
- When you dispose of the steam cleaner, cut through the mains cord before so it is not longer possible to use it. Always remember to secure any potentially dangerous parts of the steam cleaner as there is a risk that children may play with it.

⚠ WARNING!**Burn hazard!**

Improper handling of the steam cleaner may result in injury from hot steam.

- If you push the steam button before the boiler has reached the operating temperature, water may escape from the nozzle instead of steam.
- Do not leave the steam cleaner unattended if it is connected to the mains.
- Do not touch the hot surfaces while using the steam cleaner. Let accessories cool off completely before changing them.

AFTER SALES SUPPORT

☎ GB 01924 481053

IRE 01-4968036/4963993

💻 GB customerservice@jaleno.com

IRE kenilworthelec@eircom.net

- Even when the steam cleaner is not being operated, disconnect it from the mains and let it cool down before attaching or removing accessories or before you clean it.
- **IMPORTANT!** Scalding hazard.
NEVER OPEN THE SAFETY CLOSURE OF THE BOILER WHILE USING THE DEVICE.
- **IMPORTANT!** Perform the following steps before you remove the closure:
 - disconnect the mains cord from the socket;
 - let the remaining pressure escape from the boiler by pushing the steam button on the nozzle; point the stream in a suitable container;
 - let the device cool off for a few minutes;
 - slowly unscrew the safety closure until it is slightly loose and wait a few seconds;
 - unscrew the safety closure until it is completely loose and remove it.

⚠ WARNING!**Scalding hazard!**

If you open the boiler during use, hot steam may be emitted.

- Do not open the safety closure of the boiler during use.
- The steam cleaner is very hot after every use. The safety closure can only be removed if the steam pressure in the boiler amounts to less than 0.35 bar (approx. 5 psi). After use, let the steam cleaner cool down before you empty the boiler or remove accessories.

⚠ CAUTION!**Risk of injury!**

Improper handling of the steam cleaner may cause injury.

- Do not point the vapour stream at persons, animals or plants and do not point it at devices that contain electrical components (e.g. inside of ovens).



- Lay the mains cord of the steam cleaner so that it does not pose a tripping hazard.
- During use, never tilt the steam cleaner more than 45° away from the upright position in order to prevent hot water from running out of the boiler.

NOTICE!

Risk of damage!




Improper handling of the steam cleaner may result in damage.

- Only use the steam cleaner in accordance with proper use. The steam cleaner is only intended for use in your household.
- Do not expose the steam cleaner to rain, direct sunlight, dust, extreme temperatures etc.
- Do not position the steam cleaner on or near heat sources.
- Make sure that the mains cord is not laid over sharp edges and is not in contact with hot surfaces.
- Make sure that the mains cord is not twisted, kinked or knotted.
- Do not point the vapour stream at the steam cleaner itself.
- Do not open the housing of the steam cleaner.
- Do not submerge the main unit of the steam cleaner, the mains plug or the mains cord in water or other liquids.
- Before using the steam cleaner, make sure that all objects, surfaces and fabrics you intend to clean are able to withstand or are compatible with the high temperature of the steam. In particular, you should only clean treated terracotta floors, wood surfaces or sensitive fabrics like silk or satin after you have read the manufacturer's instructions and tested the steam cleaner on a small inconspicuous sample.
- Do not use the steam cleaner in swimming pools that are filled with water.
- Do not add any limescale removers, scents, alcohols or cleaners to the boiler as they could damage the steam cleaner.

- Before you connect the steam cleaner to a power source, make sure that there is enough water in the boiler.
If the boiler has to be filled up during use, refer to the chapter “Filling the boiler during use” for the necessary steps.
- Do not use any glass cleaner if the surface you intended to clean is cold. The movement induced by the heat may shatter the glass surface. In the event of particularly low temperatures during the cold season, heat the glass surface with steam bursts from a distance of approx. 40 cm.
- If you are using the steam cleaner for the first time or after a prolonged pause, point the vapour steam in a container to remove any excess water.
- If you use the flexible hose, point the stream in a container before emitting a burst of steam to remove condensation from the hose.
- Do not modify the steam cleaner and do not use accessories that do not originate from the manufacturer.
- Disconnect the steam cleaner from the socket by holding the mains plug and pulling it out of the socket. Do not disconnect the steam cleaner from the mains by pulling on the mains cord.
- Any modifications to the steam cleaner, which are not expressly approved by the manufacturer, could deactivate the safety equipment. This also voids the warranty claim.
- Stop using the steam cleaner if it has fallen down or is not water-tight or exhibits other visible damage.



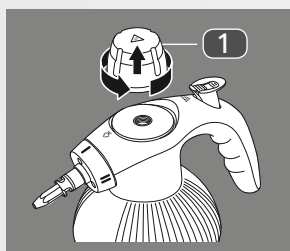
AFTER SALES SUPPORT

  01924 481053
 01-4968036/4963993

  customerservice@jaleno.com
 kenilworthelec@eircom.net

QUICK START GUIDE!

Using the Handheld Steam Cleaner:



1. Removing the safety cap

- Make sure the power cord of the cleaner is NOT connected to a socket.
- Unscrew the safety cap **1** and then remove it.

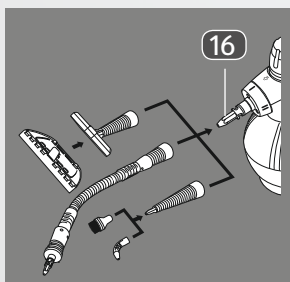


2. Filling in water

- Fill the cleaner with water by using the measuring cup **13** and funnel **12**.

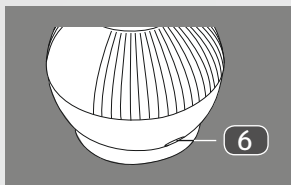
3. Replacing the safety cap

- Screw the safety cap on again.



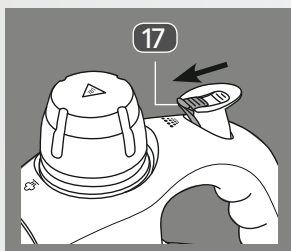
4. Attaching accessories

- Attach accessories to the steam nozzle **16**.
- See chapter "Attaching the accessories" for more information.



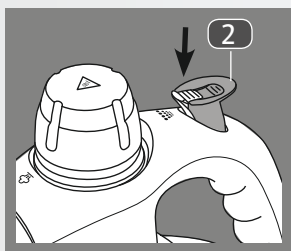
5. Connecting to power

- Connect the power cord to a socket.
- The power indicator light **6** will turn on.
- Wait for about 3-4 minutes for the steam to be ready.



6. Unlocking the steam button

- Slide the safety lock **17** towards the front end of the cleaner to unlock the steam button.



7. Releasing steam

- Press the steam button **2** to release steam for cleaning.

8. Disconnecting from power

- When cleaning is done, disconnect the power cord and allow the cleaner to cool down completely before storing it.

Read all safety notes in the user guide before use.

Also read other chapters in the user guide to learn how to use more features.

General information

Reading and storing the instruction manual



This instruction manual accompanies this handheld steam cleaner. It contains important information on start-up and handling.

For improved readability, the handheld steam cleaner will be referred to only as the “steam cleaner” below.

Before using the steam cleaner, read the instruction manual carefully. This particularly applies for the safety notes. Failure to heed this instruction manual may result in severe injury or damage to the steam cleaner.

The instruction manual is based on the standards and rules in force in the European Union. When abroad, you must also observe country-specific guidelines and laws.

Store the instruction manual for future use. If you pass the steam cleaner on to third parties, be absolutely sure to include this instruction manual.

Proper use

The steam cleaner is exclusively for cleaning fillings, tiles, mirrors, windows and for removing stains from carpets and similar with hot steam. It is only suitable for private use in indoor areas and is not for commercial use.

Only use the steam cleaner as described in this instruction manual. Any other use is deemed improper and may result in damage to property or even personal injury. The steam cleaner is not a children's toy.

The manufacturer or vendor accepts no liability for damage caused by improper or incorrect use.

Checking the steam cleaner and product contents

1. Take the steam cleaner out of the packaging.
2. Remove all foils and packaging parts.
3. Make sure that all components and accessories are present (see **fig. A**).
4. Check whether the steam cleaner or the individual parts exhibit damage. If this is the case, do not use the steam cleaner. Contact the manufacturer at the service address specified on the warranty card.



Filling the boiler

WARNING!

Risk of electric shock!

There is a risk of electrical shock if used improperly.

- Only screw the safety closure off if you are certain that the steam cleaner has been disconnected from the socket.

WARNING!

Risk of injury!

You could injure yourself if you try to open the safety closure while the steam cleaner is still hot.

- Only open the safety closure if the steam cleaner is cold.
- Slowly and carefully open the safety closure.



It is recommended that you fill the steam cleaner with tap water or alternatively, for regions with very hard water, with 50 % demineralised water and 50 % tap water.

Perform the following steps before you remove the closure:

1. Disconnect the steam cleaner from the mains.
2. Let the remaining pressure escape from the boiler **4** by pushing the steam button **2** on the handle **3**.
Point the stream in a suitable container.
3. Let the steam cleaner cool off for a few minutes.
4. Slowly loosen the safety closure **1** somewhat and wait a few seconds.
You can now slowly loosen the safety closure.
5. Unscrew the safety closure and remove it (see step 1 in **fig. B**).
6. Use the measuring cup **13** and the funnel **12** to fill the boiler with water (see step 2 in **fig. B**).
Do not let any water run out of the boiler. The boiler should be filled up completely. For this, fill the measuring cup up to the top reference notch two times.
7. Then screw the safety closure back on.

Accessories

The steam cleaner has multiple accessories for different cleaning applications:

Accessories	Cleaning application
Flexible hose 7	Use the flexible hose as an extension for the straight nozzle, the round brush, the curved nozzle, the textile brush or the glass cleaner.
Straight nozzle 8	Suitable for cleaning hard-to-reach areas or as an extension for the round brush or the curved nozzle.
Round brush 9	Suitable for cleaning the hubcaps of vehicles, water fittings or tile joints in kitchens or bathrooms etc.
Curved nozzle 10	Suitable for cleaning hard-to-reach corners, nooks and crannies, e.g. sinks and radiators.
Fabric cover 11	Suitable for cleaning sensitive surfaces, e.g. sofas and chairs (in combination with the textile brush).
Glass cleaner 14	Suitable for cleaning smooth surfaces, e.g. mirrors, windows and shower walls (in combination with the textile brush).
Textile brush 15	Suitable for cleaning fabrics, e.g. carpets.

Attaching accessories

⚠ CAUTION!

Risk of injury!

The steam cleaner is very hot during and after use. Improper handling of the steam cleaner may cause injury.

- Let the steam cleaner cool off before you remove or change accessories.

Straight nozzle

1. Attach the straight nozzle **8** to the hexagonal end of the steam nozzle **16** so that the reference mark on the straight nozzle and the mark on the steam nozzle line up (see step 1 in **fig. C**).
2. Turn the straight nozzle clockwise until the reference mark on the straight nozzle is aligned with the two lines on the steam nozzle (see step 2 in **fig. C**).

Round brush and curved nozzle

Both the round brush **9** and the curved nozzle **10** can be fitted on the hexagonal end of the straight nozzle **8** (see **fig. D**) or directly on the hexagonal end of the steam nozzle **16** (see **fig. E**).

Flexible hose, textile brush, fabric cover and glass cleaner



Using the flexible hose:

Before you emit a burst of steam, point the nozzle in a container to remove any condensation from the flexible hose.

- The flexible hose **7** must be fitted on the hexagonal end of the steam nozzle **16** for use.
- The straight nozzle **8**, round brush **9**, curved nozzle **10** or textile brush **15** can be fitted on the hexagonal end of the flexible hose for use.
- The fabric cover **11** can be fitted on the textile brush in order to clean sensitive surfaces.
- The glass cleaner **14** can be fitted on the textile brush in order to clean smooth surfaces (see **fig. F**).

Operation

1. Fill the boiler **4** with water (see chapter "Filling the boiler").
2. Connect the mains cord **5** to a socket.
The power indicator light **6** will light up. Wait approximately 3 to 4 minutes for steam to be produced.
3. If the safety lock **17** has engaged, push it towards the front end of the steam cleaner to unlock it (see **fig. G**).
4. Push the steam button **2** to emit steam.
5. Once you are done cleaning, release the steam button.
6. Push the safety lock towards the rear end of the cleaner to lock the steam button.
This will avoid accidental activation of the steam button.
7. Disconnect the mains cord from the socket and let the steam cleaner cool off completely.

Filling the boiler during use

WARNING!

Risk of electric shock!

There is a risk of electrical shock if used improperly.

- Only screw the safety closure off if you are certain that the steam cleaner has been disconnected from the socket.

NOTICE!

Risk of damage!

If the steam pressure in the boiler is too high, the safety closure cannot be loosened or removed.

- Let the steam cleaner cool down for a few minutes before trying again.

If no steam is emitted after pressing the steam button, the boiler may be empty.

Fill the boiler as follows:

1. Pull the mains plug out of the socket.
2. Push the steam button **2** to release residual steam from the boiler **4** while pointing the vapour stream in a suitable container.
3. Let the steam cleaner cool off for a few minutes.
4. Loosen the safety closure **1** just a little bit. Wait until the hissing produced by the remaining steam diminishes before you completely screw off the safety closure.
5. Screw the safety closure off so that it is completely loose and remove it.
6. Slowly pour water into the boiler **4**. Use the measuring cup **13** and the funnel **12** for this.
Do not let any water run out of the boiler.
7. Then screw the safety closure back on.
8. Connect the mains cord to a socket again.

Emptying the boiler after use

CAUTION!

Risk of injury!

The steam cleaner is very hot after every use. The safety closure can only be removed if the steam pressure in the boiler amounts to less than 0.35 bar.

- After use, let the steam cleaner cool down before you empty the boiler.
 1. Once you are done cleaning, pull the mains plug out of the socket.
 2. Let the steam cleaner cool off completely.
 3. Screw the safety closure **1** off.
 4. Pour the water out of the boiler **4**.
 5. Then screw the safety closure tight again.

Cleaning and maintenance

WARNING!

Risk of electric shock!

There is a risk of electrical shock if used improperly.

- Always disconnect the mains cord from the socket before you clean the steam cleaner.
- Do not submerge the steam cleaner, the mains cord or the mains plug in water or other liquids.

CAUTION!

Risk of injury!

Improper handling of the steam cleaner may cause injury.

- Always let the steam cleaner cool off completely before you clean or store it.

NOTICE!**Risk of damage!**

If you do not clean the steam cleaner properly, you could damage it.

- Do not use any aggressive cleaners, brushes with metal or nylon bristles, as well as sharp or metallic cleaning utensils such as knives, hard scrapers and the like. The surfaces of the steam cleaner could be damaged as a result.
 - Make sure that no water penetrates the housing of the steam cleaner.
 - Clean the boiler at least once a month to remove any limescale deposits that could affect normal operation of the steam cleaner.
1. Wipe the steam cleaner off with a damp cloth or sponge. Wipe it dry after cleaning.
 2. Rinse the boiler **4** out once a month to remove any limescale deposits. Do not use vinegar or other decalcifiers.

Storage

- Clean the steam cleaner before you store it (see chapter “Cleaning and maintenance”).
- Make sure that the mains cord **5** is not knotted or kinked.
- Always store the steam cleaner in a clean, dry area.
- Keep children away from the steam cleaner.

Declaration of conformity

The EU declaration of conformity can be requested from the address specified on the warranty card (at the end of this instruction manual).



Technical data

Product description:	Handheld steam cleaner
Model:	4133
Product code:	92742
Input voltage:	220 – 240 V, 50/60 Hz
Power supply:	900 W
Protection class:	I (the device must be grounded)
Protection class for protection against contact/foreign bodies:	IPX4 (splash-proof)

Disposal

Disposing of the packaging



Dispose of the packaging separated into single type materials. Dispose of cardboard and carton as waste paper and foils via the recyclable material collection service.

Disposing of old devices

(Applicable in the European Union and other European states with systems for the separate collection of reusable waste materials)



Old devices must not be disposed of with household waste!

If the steam cleaner can no longer be used, every user is required by law **to dispose of old devices separately from their household waste**, e.g. at a collection point in his community/borough. This ensures that old devices are recycled in a professional manner and also rules out negative consequences for the environment. For this reason, electrical devices are marked with the above symbol.

EASY
HOME

WARRANTY CARD

HANDHELD STEAM CLEANER

Your details:

Name _____

Address _____

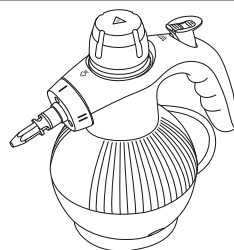
 _____ E-mail _____

Date of purchase* _____

* We recommend you keep the receipt with this warranty card.

Location of purchase _____

Description of malfunction:



If after contacting the manufacturer you are requested to return the faulty product please return the completed warranty card together with it.

GB: Jaleno Europe Limited,
Roe Head House, Far Common Road
Mirfield, West Yorkshire, WF14 0DQ,
ENGLAND

IRE: Kenilworth Electrical,
253 Harolds Cross Road Dublin,
IRELAND

AFTER SALES SUPPORT



GB 01924 481053

IRE 01-4968036/4963993



GB customerservice@jaleno.com

IRE kenilworthelec@eircom.net

MODELL: 4133

PRODUCT CODE: 92742

01/2016

GB: Phone lines available
Monday to Friday
8.00 am-4.00 pm.

IRE: Phone lines available
Monday to Friday
9.00 am-5.00 pm.

3

YEARS
WARRANTY



Warranty conditions

Dear Customer,

The **ALDI warranty** offers you extensive benefits in addition to your statutory rights:

Warranty period: **3 years** from date of purchase.

6 months for wear parts and consumables under normal and proper conditions of use (e.g. rechargeable batteries).

Costs: Free repair/exchange.
No transport costs.

ADVICE:	Please contact our service hotline by phone, e-mail or fax before sending in the device. This allows us to provide support in the event of possible operator errors.
----------------	--

In order to make a claim under the warranty, please send us:

- the faulty item together with the original purchase receipt and the completed warranty card.
- the faulty product with all components included in the packaging.

The warranty does not cover damage caused by:

- **Accident** or **unanticipated events** (e.g. lightning, water, fire).
- **Improper use** or **transport**.
- **Disregard of the safety** and **maintenance instructions**.
- Other **improper treatment** or **modification**.

After the expiry of the warranty period, you still have the possibility to have your product repaired at your own expense. If the repair or the estimate of costs is not free of charge you will be informed accordingly in advance.

This warranty does not affect your statutory rights.



Spend a little Live a lot

Great care has gone into the manufacture of this product and it should therefore provide you with years of good service when used properly. In the event of product failure within its intended use over the course of the first 3 years after date of purchase, we will remedy the problem as quickly as possible once it has been brought to our attention. In the unlikely event of such an occurrence, or if you require any information about the product, please contact us via our helpline support services, details of which are to be found both in this manual and on the product itself.



PRODUCED IN CHINA FOR:

ALDI STORES LTD. PO BOX 26, ATHERSTONE
WARWICKSHIRE, CV9 2SH.

ALDI STORES (IRELAND) LTD.
PO BOX 726, NAAS, CO. KILDARE.
Visit us at www.aldi.com

AFTER SALES SUPPORT



GB 01924 481053
IRE 01-4968036/4963993



GB customerservice@jaleno.net
IRE kenilworthelec@eircom.net

MODEL: 4133

PRODUCT CODE: 92742

01/2016

3
YEARS
WARRANTY