



Spend a little Live a lot

Great care has gone into the manufacture of this product and it should therefore provide you with years of good service when used correctly. In the event of product failure within its intended use over the course of the first 3 years after date of purchase, we will remedy the problem as quickly as possible once it has been brought to our attention. In the unlikely event of such an occurrence, or if you require any information about the product, please contact us via our helpline support services, details of which are to be found both in this manual and on the product itself.

GB

Jaleno Europe Limited  
Roe Head House  
Far Common Road  
Mirfield  
West Yorkshire  
WF14 0DQ  
England

IRE

Kenilworth Electrical  
Electrolux Complex  
Longmile road  
Dublin 12

#### AFTER SALES SUPPORT

GB 01924 481053 customerservice@jaleno.com  
IRE 014508703 / 014508705 kenilworthelec@eircom.net

Model: 4143 Product Code: 65784 06/2015

3  
YEAR  
WARRANTY



Spend a little Live a lot



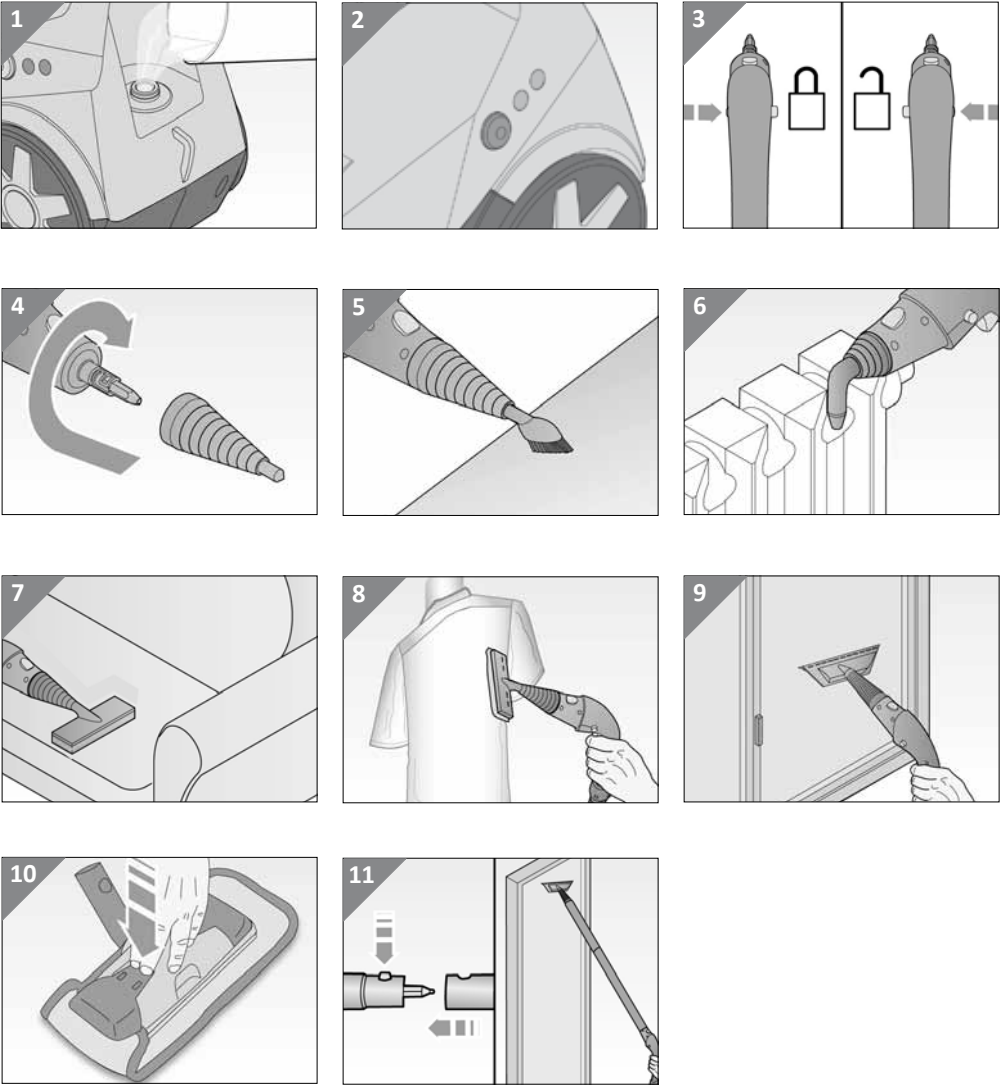
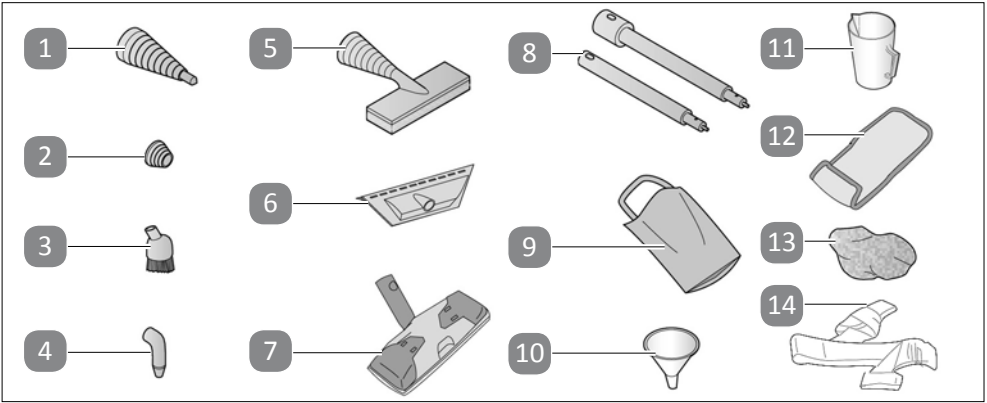
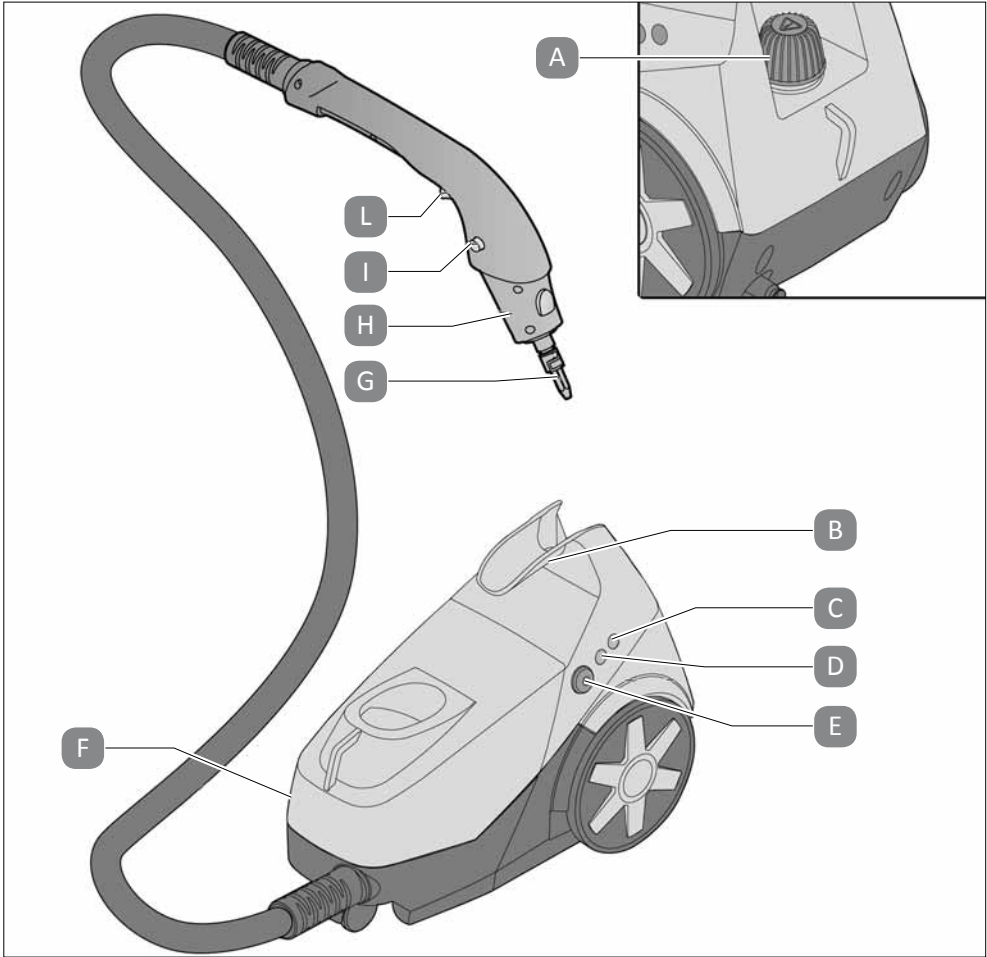
## MULTIPURPOSE STEAM CLEANER



# User Manual

## Contents

With regard to this manual.....	1
Important safeguards.....	1
Instructions for use.....	5
Filling the boiler tank before use.....	5
Switching on.....	5
Operation.....	5
Switching off the appliance.....	5
Attachments.....	6
Filling the boiler tank during use.....	7
Cleaning and maintenance.....	8
Emptying and cleaning the inside of the boiler tank.....	8
Troubleshooting.....	9
Technical data.....	10
Disposal of waste.....	10
Warranty card.....	11
Warranty conditions.....	12



## Description of the appliance

- A Boiler tank cap
- B Handle
- C Steam ready light
- D On/off light
- E On/off switch
- F Appliance body
- G Gun nozzle
- H Gun
- I Lock button
- L Steam dispenser button

## Description of attachments

- 1 Extension nozzle
- 2 Hood
- 3 Round brush
- 4 Angled nozzle
- 5 Upholstery brush
- 6 Window brush
- 7 Floor brush
- 8 Extension tubes
- 9 Attachment bag
- 10 Funnel
- 11 Measure
- 12 Floor cloth
- 13 Upholstery cloth
- 14 Shoulder belt

**WITH REGARD TO THIS MANUAL**

Even if you are familiar with this type of product please read these warnings carefully and use the appliance only for the use it is designed for in order to prevent accidents and damage. Keep this manual close by for future consultation. If you should decide to give this appliance to other people, remember to also include these instructions.

The information provided in this manual is marked with the following symbols indicating:



Danger for children



Danger from electricity



DANGER from other causes



WARNING danger of scalds



IMPORTANT, possible damage to materials

**IMPORTANT SAFEGUARDS****READ THESE INSTRUCTIONS BEFORE USE.****ALWAYS KEEP THESE INSTRUCTIONS.**

This appliance conforms to the Directives 2006/95/EC and EMC 2004/108/EC. To dispose of the product correctly according to European Directive 2012/19/EU, please refer to and read the provided information enclosed with the product.

**Danger for children**

1. This appliance is not suitable for use by people – including children – with reduced physical, sensorial or mental capabilities; by people with little or no experience or awareness of the appliance, unless carefully supervised or trained in the use of the appliance by a person responsible for their safety.
2. It is necessary to supervise children to make sure that they do not play with the appliance.
3. When disposing of the appliance as waste, it must be made inoperative by cutting off the power cord. Also remember to make any parts of the potentially hazardous parts of the appliance safe, as there is a risk that children may use them as playthings.



4. Packaging elements must not be left in reach of children as they are potentially hazardous




### **Danger from electricity**

5. Make sure that your local mains supply voltage matches that shown on the Rating Plate of this appliance before connecting to a mains outlet.
6. Always connect the appliance to a properly earthed socket.
7. In case of using extension leads, these must be suitable for the appliance power to avoid danger to the operator and for the safety of the environment in which the appliance is being used. Extension leads, if not suitable, can cause operating anomalies. A 3 wire Extension cord (EARTHED) with a minimum conductor cross sectional area of 1.5mm<sup>2</sup> must be used.
8. Never leave the appliance unattended when it is connected to the power mains; unplug it after every use.
9. Always switch off the appliance at the main switch and unplug it from the mains power outlet before refilling it.
10. Make sure that your hands are dry before using or adjusting the appliance switches and before touching the plug or power connections.




### **Danger from other causes**

11. Never leave the appliance exposed to the elements (rain, sunshine, etc.).
12. Never place the appliance on or near to sources of heat.
13. Make sure that the power cord does not come into contact with hot surfaces.
14.  Never point steam jets in the direction of people, animals or plants or towards appliances that contain electrical parts (e.g., oven interiors).
15. Never direct steam jets onto the appliance itself.
16. Never immerse the body of the appliance, plug or power cord in water or other liquids; clean them only with a damp cloth.
17. Never use the appliance if the power cord or plug are damaged or if the appliance is faulty / has been dropped or damaged in any way.

18. All repairs, including the replacement of the power cord, must only be carried out by an Assistance Centre or by suitably qualified persons, so as to prevent any risks.
19. This appliance has been designed for domestic use only and may not be used for commercial or industrial purposes.
20. During use, the appliance contains pressurised steam: improper use can be dangerous. The appliance is designed for domestic use only, as stated in the manual. The manufacturer cannot accept any liability for damage cause through improper or incorrect use of the appliance.
21. When the appliance is not in use, always lock the steam dispensing button with the special button.



### **Warning danger of scalds**

22. If the steam button is pressed before the boiler has reached the optimum temperature, then water instead of steam could come out of the nozzle.
23. Never touch hot surfaces while using the product. Leave attachments to cool before replacing them.
24. Even when the appliance is not in operation, unplug it from the mains power outlet and leave it to cool before inserting or removing parts or before cleaning it.
25.  **IMPORTANT:** danger of scalds.
26. **NEVER OPEN THE CAP ON THE BOILER TANK DURING USE.**
27. **IMPORTANT:** Before unscrewing the cap on the boiler tank, proceed as follows:
  - switch off the appliance at the main switch and unplug the power cord from the mains socket;
  - bleed out the remaining pressure from the boiler tank, using the steam button on the gun, pointing the jet into a suitable container;
  - leave the appliance to cool for a few minutes;
  - slowly loosen the boiler tank cap, part of the way and wait for a few seconds;
  - unscrew the cap completely and remove it.





### **Important, Possible damage to materials**

28. Before using the product, make sure that all items, surfaces and fabrics to be cleaned are resistant to or compatible with the high temperature of the steam. Specifically, treated terracotta flooring, wooden surfaces or delicate fabrics, such as silk or velvet, should not be treated without first consulting the instructions from the manufacturer and carrying out a test on a small hidden sample part.
29. Never use in swimming pools containing water.
30. Never add scale removers, fragrances, alcohols or detergents to the boiler tank, as these could damage the appliance. We recommend filling with tap water or alternatively, with 50% demineralised water and 50% tap water in areas where the water is very hard.
31. Before switching on the appliance, make sure that there is sufficient water inside the boiler tank. If it is necessary to refill the tank during use, proceed as described previously, and following the instructions in the paragraph "FILLING THE BOILER TANK DURING USE".
32. Clean the boiler tank at least once a month so as to eliminate any scale residues that might affect the normal operation of the appliance (see the paragraph "CLEANING AND MAINTENANCE").
33. Never use the window wiper brush if the surface to be cleaned is cold; the thermal shock could cause the surface to break, In cold seasons, where the temperature is particularly low, pre-heat the glass with steam jets, all over, from a distance of about 40 cm.
34. When using for the first time or after a long pause, direct the steam jet into a container to eliminate any excess water.
35. Do not threaten the safety of the appliance by using parts that are not original or which have not been approved by the manufacturer.
36. Unplug the appliance by gripping the plug firmly and pulling it out of the power socket; never unplug the appliance by pulling on the power cord.
37. Any changes to this product not expressly authorised by the manufacturer may make safety devices inoperative and will also render the user's warranty null and void.

## INSTRUCTIONS FOR USE



### Filling the boiler tank before use

- Unscrew the boiler tank filler cap (A), and use the funnel (10) provided to fill the boiler tank (Fig. 1).
- Screw on the boiler tank filler cap (A).
- Fit the required attachment to the gun (H) (see the “ATTACHMENTS” paragraph).

### Switching on

- Plug the appliance power cord into the mains electricity and switch on the appliance using the On/off switch (E); the On/off light (D) will switch on, as will the steam ready light (C) (Fig. 2) indicating the appliance is heating.
- After a few minutes, the steam ready light (C) will switch off to show that the boiler tank is pressurised and the appliance can now dispense steam.

### Operation

- The steam ready light (C) will switch on and off during use to show that the boiler tank is maintaining temperature.
- To prevent the steam from being dispensed accidentally, the lock button (I) must be moved from the left to the right (); to release the steam function, move the button (I) from right to left () (Fig. 3).
- To dispense steam, press the steam dispenser button (L) on the gun (H).
- When using for the first time, it is a good idea to spray the steam jet into a container to get rid of any water residues that might be inside the tube (any water coming out is because of the condensed steam inside the tube). This action needs to be repeated even after a few minutes of appliance inactivity. In any case, when the gun begins to dispense steam, always point the jet downwards to the ground.

### ATTENTION

**When the appliance is not being used, always lock the steam dispenser button with the lock button (I) by moving it from the left to the right.**

### Switching off the appliance

- To stop dispensing steam, release the dispensing button (L).
- After use, switch off the appliance, using the On/Off switch (E) and unplug it from the mains power socket. Clean the attachments and boiler tank as described in the “CLEANING AND MAINTENANCE” section.
- Refit the gun (H) over the special handle (B), after placing the lock button (I) in the lock position.

## ATTACHMENTS

### Extension nozzle (1)

With this attachment it is possible to thoroughly clean all those surfaces where stubborn dirt can take hold.

The nozzle can be fitted directly to the gun nozzle (G) or extension tubes (8): after lining up the marks on the gun nozzle (G) and attachment, turn the nozzle 90° clockwise until it locks into place (Fig. 4).

### Hood (2)

This attachment can be fitted to the gun nozzle (G) to protect the end.

### Round brush (3)

This attachment is for fitting on the extension nozzle (1) and helps to dissolve the most stubborn dirt build up, such as the type that forms on the cook top or in the grout widths between tiles. It can be used to clean bathroom fixtures, sinks, cooker racks, showers and baths, where it removes all traces of scale (Fig. 5).

### Angled nozzle (4)

This attachment can be fitted to the gun nozzle (G) after inserting the cap (2) or extension nozzle (1).

It is particularly useful for reaching and sterilising difficult areas, where dirt can build up unseen, on radiators, shutters, and bathroom fixtures, removing it simply and quickly (Fig. 6).

### Upholstery brush (5)

The fabric brush can be fitted straight onto the gun nozzle (G) or to the extension tubes (8). When the handy cloth (14) is fitted, it is possible to use the brush to remove dust and for daily cleaning of sofas, armchairs, blankets, mattresses and cushions (Fig. 7). The brush can also be used to freshen up fabrics, removing all creases. In any case, we recommend, when using for the first time and during normal use, to discharge the condensation from the steam into a container so as not to wet the fabrics (Fig. 8).

### Window brush (6)

A window wiper brush can be fitted to the fabric brush (5): to assemble the two, just insert the tabs at the base of the fabric brush into the hooks at the bottom of the window wiper brush. Use the window wiper to restore the polished shine to windows, mirrors and gloss surfaces. It is also easy to use on shower cubicle glass, removing the problem of lime scale (Fig. 9).



### Floor brush (7)

This accessory is used on extension tubes (8) and it has handy cloth grips that hold the cloth provided (13), any type of machine washable cloth. To fit the cloth, place the brush in the middle, lift the clips at the ends of the brush, insert a flap of cloth and then release the clips (Fig 10).

### Extension tubes (8)

The extension tubes snap together and can be easily separated by pressing the release button. They are useful for reaching high surfaces with the window wiper (6), using the special extension joint, or they can be used with the floor brush (7) (Fig. 11).

### Attachment bag (9)

The appliance comes with a bag for the attachments, which is handy for storage as well as for keeping them close at hand.

### Shoulder Belt (14)

You can use the belt (14) to carry the unit on your shoulder when using.

## FILLING THE BOILER TANK DURING USE

If the boiler tank should become empty during use, switch off the appliance, unplug it from the mains power and proceed as follows:

- press the steam dispensing button (L) to discharge any residual steam;
- slowly unscrew the boiler tank filler cap (A) waiting a few seconds for the steam to finish before unscrewing it completely. Wait a few minutes before adding water to the boiler tank;
- add more water, making sure to pour it in slowly to prevent new bursts of steam from forming.
- We recommend waiting at least 3 minutes from the time of unplugging the appliance before adding more water to the boiler tank;
- firmly screw the boiler tank filler cap (A) back into place;
- plug the appliance to the power mains;
- press the On/Off switch (E).

### ATTENTION

In case the safety cap (A) does not loosen, wait some minutes to allow the appliance to cool down as there is still some steam under pressure. Press the steam dispenser button (L) to exhaust the residual steam in the boiler and proceed with cap removal again.

## CLEANING AND MAINTENANCE

### Emptying and cleaning the inside of the boiler tank

#### **ATTENTION**

Clean the boiler tank at least once every month so as to remove any scale residues which might affect the normal operation of the appliance.

#### **ATTENTION**

Switch off the appliance, unplug it from the mains power and leave it to cool before cleaning out the boiler tank, so as to avoid the risk of scalds.

- Bleed out any pressure remaining in the boiler tank using the steam dispenser button (L) on the gun (H), pointing the jet into a suitable container.
- Slowly unscrew the boiler tank filler cap (A) and remove it completely.
- Fill the boiler tank with tap water, shake the appliance and then turn it upside down to empty it.
- Repeat this operation a few times.

#### **CAUTION**

Never add scale removers, vinegar or other perfumed substances to the tank, as these risk damaging the appliance with immediate cancellation of the warranty.

## TROUBLESHOOTING

PROBLEM	CHECK	POSSIBLE CAUSES	POSSIBLE REMEDY
No steam comes out of the nozzle	Steam ready light (C) on	Cold boiler tank	Wait for the steam ready light (C) to switch off.
	Steam ready light (C) off	No water in the boiler tank	Fill the boiler tank as described in the paragraph "FILLING THE BOILER TANK DURING USE"
	Steam ready light (C) off – Water in the boiler tank	Malfunction	Contact your ASSISTANCE CENTRE
The nozzle is dispensing little steam	Steam ready light (C) on	The boiler tank is cold	Wait for the boiler tank to heat up

## TECHNICAL DATA

Nominal voltage: 220-240V~  
Nominal frequency: 50/60Hz  
Nominal power: 1400W  
Protection: IPX4 Class I

## DISPOSAL OF WASTE



**The product packaging is made of recyclable materials. The packaging material can be taken to public recycling collection points.**



**Old appliances do not belong in household waste!** To comply with current legislation, old appliances, having reached the end of their useful lives, should be taken to a disposal facility where they can be sorted. In this way, any valuable material contained in the old appliances can be recycled and the environment protected.

Responsible local authorities or their waste disposal operators can provide further information.





# WARRANTY CARD

## Multipurpose steam cleaner

### Your personal details:

Name \_\_\_\_\_

Address \_\_\_\_\_

\_\_\_\_\_



\_\_\_\_\_ Email \_\_\_\_\_

Date of purchase\* \_\_\_\_\_

\* We recommend you keep the receipt with this warranty card

Location of purchase \_\_\_\_\_

### Description of malfunction:



### Return your completed warranty card to:

Jaleno Europe Limited  
Roe Head House  
Far Common Road  
Mirfield  
West Yorkshire  
WF14 0DQ  
England

Kenilworth Electrical  
Electrolux Complex  
Longmile road  
Dublin 12

### AFTER SALES SUPPORT



GB 01924 481053

IRE 014508703 / 014508705



GB customerservice@jaleno.com

IRE kenilworthelec@eircom.net

MODELL: 4143 PRODUCT CODE: 65784, 06/2015

3

YEAR WARRANTY



## Warranty conditions

Dear Customer,

**Warranty period:**        **3 years from date of purchase.**  
**6 months** for wear parts and consumables under normal and proper conditions of use (e.g. rechargeable batteries).

**Costs:**                      Free repair/exchange or refund.  
No transport costs.

**Hotline:**                    No additional charge for fixed network calls.

**ADVICE:** Please contact our service hotline by phone, e-mail or fax before sending in the device. This allows us to provide support in the event of possible operator errors.

**In order to make a claim under the warranty, please send us:**

- the original receipt and the warranty card properly completed.
- the product with all components included in the packaging.

**The warranty does not cover** damage caused by:

- **Accident or unanticipated events** (e.g. lightning, water, fire).
- **Improper use or transport.**
- **Disregard of the safety and maintenance instructions.**
- **Other improper treatment or modification.**

After the expiry of the warranty period, you still have the possibility to have your product repaired at your own expense. If the repair or the estimate of costs is not free of charge you will be informed accordingly in advance.

This warranty does not affect your statutory rights.

In the event that a product is received for repair, neither the service company nor the seller will assume any liability for data or settings possibly stored on the product by the customer.