

BRAUN

Breakfast 1



Type HT101AI

型号 HT101AI

Register your product

点击下方链接，注册产品

www.braunhousehold.com/register

多士炉
HT1015 WH
Toaster

Before use

Please read the user instructions carefully and completely before using the appliance and retain for future reference. Remove all packaging and labels and dispose them appropriately.

Caution

- This appliance can be used by children aged from 8 years and above and persons with reduced physical, sensory or mental capabilities or lack of experience and knowledge if they have been given supervision or instruction concerning use of the appliance in a safe way and understand the hazards involved.
- Children shall not play with the appliance.
- Cleaning and user maintenance shall not be made by children unless they are older than 8 years and supervised.
- Children younger than 8 years shall be kept away from the appliance and its mains cord.
- If the supply cord is damaged, it must be replaced by the manufacturer, its service agent or similarly qualified persons in order to avoid a hazard.
- Bread may burn. Therefore, do not use near or below curtains or other flammable materials.
- Never immerse the unit in water or other liquids.
- The appliance will get hot during operation, especially the metal parts. Unplug the toaster and let it cool down before putting on the dust lid and storage.
- This appliance is not intended to be operated by means of an external timer or separate remotecontrol system.
- This appliance is designed for household use only and for processing normal household quantities.
- Please clean all parts before first use or as required, following the instructions in the Care and Cleaning section.
- Never use any solvents such as alcohol, gasoline or benzene.
- Before plugging into a socket, check whether your voltage corresponds with the voltage printed on the bottom of the appliance.
- Do not use unattended.
- Avoid touching hot insides.
- Never let the cord come in contact with the inside.
- Do not put metal objects into the toaster.
- This appliance is not suitable for toasting crisp bread, rusk, or similar food.
- Never cover the toaster slot, nor insert food covered with foil.
- Never use without the crumb tray in place.
- Occasionally pull out and empty the crumb tray.
- Only use in upright position.
- Do not toast any fatty food.
- Never place the toast directly on the toaster.
- Do not place the dust lid or any other object on top of the toaster when the appliance is switched on or when it is still hot, as this can cause damage or fire.

使用前须知

使用本产品前,请仔细阅读使用说明书并妥善保存以备日后查阅。
请将所有产品包装及标签取下。

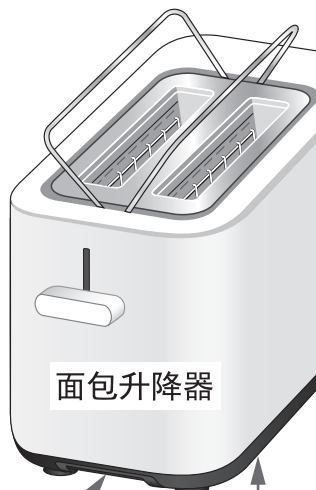
注意事项

- 8岁以上儿童或有生理、心理和感官障碍或缺乏本产品操作经验及知识的人士请在有人监管或指导的情况下安全使用本产品,并确保已了解相关操作风险。
- 请勿让儿童把玩本产品。
- 8岁以上的儿童可在有人监管的情况下,对本产品进行清洁和维护。
- 本产品及其主电源线应置于8岁以下儿童接触不到的地方。
- 电源线损坏时,为了避免危险,请务必由制造商、代理商或经授权的专业服务人员更换。
- 面包有可能燃烧。请勿在靠近窗帘及其他可燃材料的地方或在窗帘及其他可燃材料的下方使用。
- 请勿将本产品浸泡在水或其他液体中。
- 本产品在使用过程中易热,尤其是其金属部件。使用结束后请先拔下电源插头,待机身冷却后盖上防尘盖再进行储存。
- 本产品不能在外接定时器或独立的遥控控制系统方式下运行。
- 本产品仅限于家用,适合处理普通家庭量的食物。
- 请在首次使用前或根据您自身的需要,参照《清洗、维护及储存》部分中的说明对产品进行清洁。
- 请勿使用任何溶剂进行清洗,例如酒精、汽油或苯类产品。
- 产品通电之前,请先确认当地供电电压与本产品底部标签所示的额定电压是否一致。
- 请勿在无人照看的情况下使用本产品。
- 请勿接触多士炉内的灼热内侧表面。
- 请勿将电源线接触本产品内侧。
- 请勿将金属物件置于多士炉内。
- 本产品不适宜于烘烤脆面包片,甜面包干或类似食物。
- 请勿覆盖烤面包槽,或是往槽内插入包有铝箔的食物。
- 使用本产品时,确保面包屑托盘已放置到位。
- 定期将面包屑托盘抽出,进行清理擦拭。
- 本产品只有在竖直放置的状态下才可使用。
- 请勿烘烤任何含有脂肪的食物。
- 请勿将面包片直接放置于多士炉上方。
- 当本产品处于启动状态或仍处于高温状态时,请勿将防尘盖或任何其他物体放置于多士炉上方,否则可能会导致产品损坏或引发火灾。

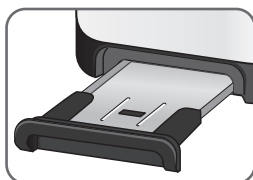
防尘盖



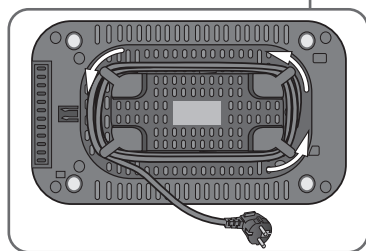
面包烤架



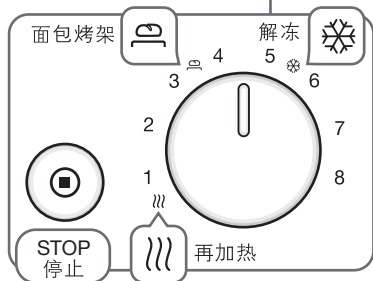
面包屑托盘



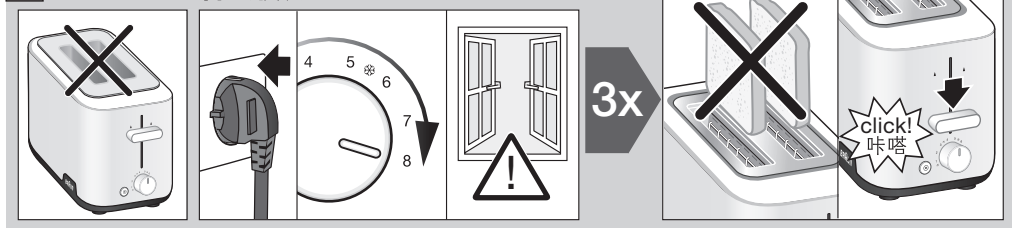
面包升降器



电源线储藏格



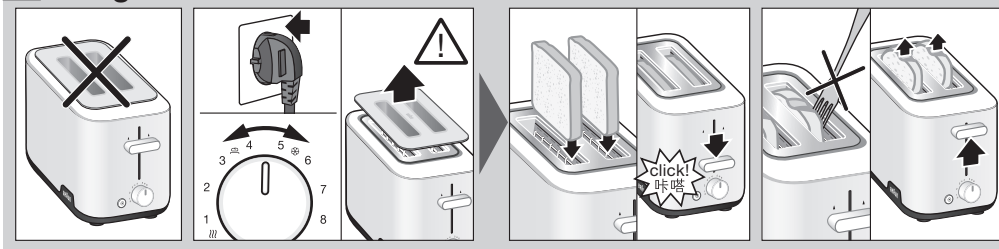
A First use 首次使用




EN Before using for the first time, heat up the empty toaster 3 times at setting «8» in a well-aired room. This will remove possible odours caused by manufacturing processes.

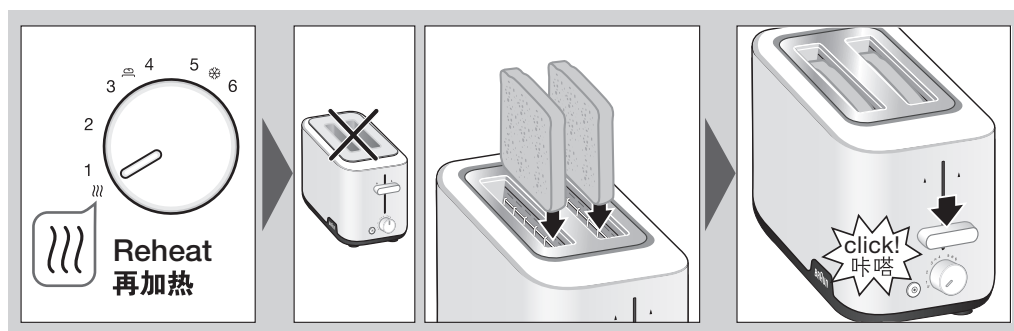
CN 首次使用之前,请在通风良好的空间内将空置多士炉调节至«8»档并按下面包升降器加热3次,以去除生产加工过程中产生的异味。

B Usage 操作



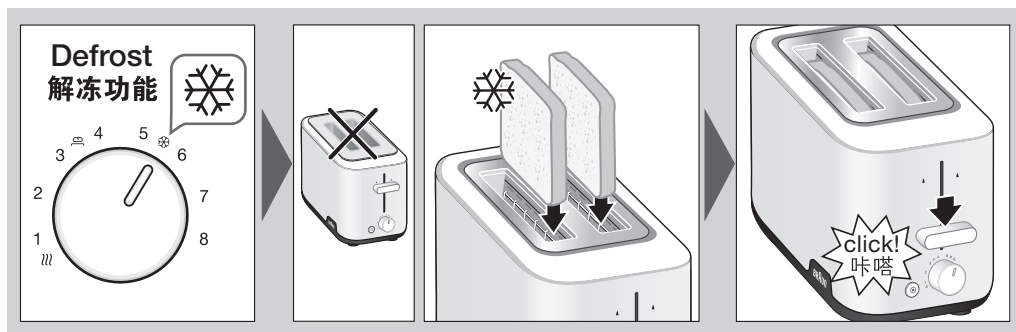
EN You can toast all sizes of bread which fit the toaster slot. Ensure the crumb tray is in place and the dust lid has been removed. Use the variable browning control to choose one of 8 toasting cycle times. Insert the bread, then press down the bread lift. The toaster automatically stops at the end of the toasting cycle, the bread lift returns to the starting position and the slices of bread pop up. The toasting cycle may be interrupted at any time by pressing the «Stop» button.

CN 您可使用该产品烘烤所有适宜烤槽大小的面包片。确保面包屑托盘固定到位,并且已移除防尘盖。使用可调节烘烤控制旋钮,选择您想要的烘烤程度,共有8档可供选择。接通电源插入面包片,然后按下面包升降器。烘烤时间结束后,多士炉会自动停止运行,面包升降器返回到初始位置,面包片会被自动托起。若需中断烘烤,只需按下  停止按钮。



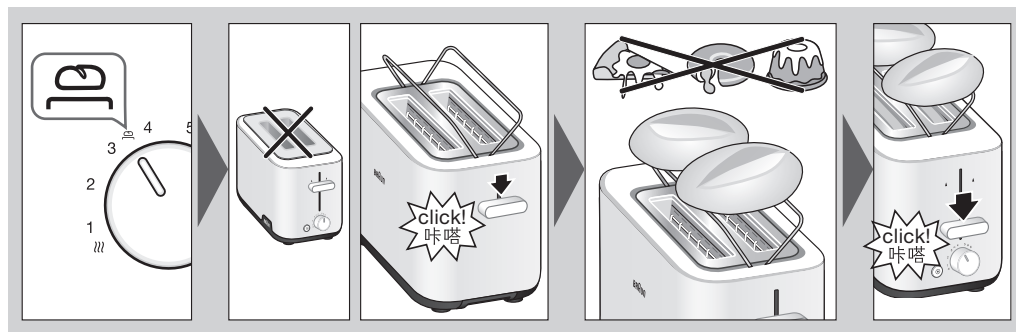
EN The toaster starts for just a short time to heat up bread that has already been toasted.

CN 多士炉只需启动很短时间便可用于加热已经烘烤过冷却的面包。



EN The defrost function guarantees that the toasting result is the same whether you use frozen or fresh bread. It will take a little longer to toast as the toaster will automatically defrost the bread first before toasting.

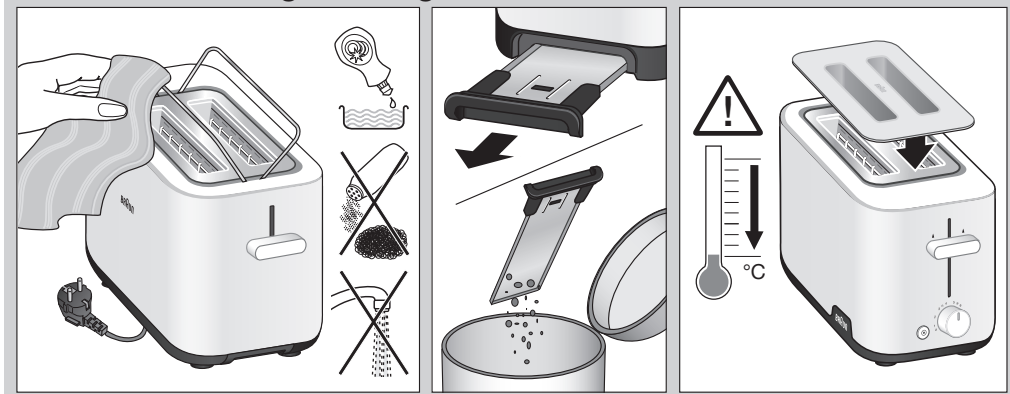
CN 解冻功能可确保无论您使用的是冷冻面包还是新鲜面包,烘烤后都能达到同样的效果。由于多士炉会在烘烤之前先自动解冻面包,因此烘烤过程需要的时间稍久一些。



EN The bun warming rack is designed for warming up buns.

CN 面包烤架可用于加热面包卷。

C Care & Cleaning & Storage 清洗、维护及储存



EN Unplug the appliance and allow to cool down before cleaning. Never clean the appliance under running water, nor immerse it in water. Clean the exterior surfaces with a damp cloth only. Do not use steel wool or abrasive cleaners. Small amounts of dishwashing liquids may be used. Never use any solvents such as alcohol, gasoline or benzene. Occasionally pull out and empty the crumb tray.

The dust lid is designed to cover the toaster slots when the toaster is not in operation, is cooled down and ensures a clean storage and use.

Note: The dust lid must not be used during operation.

CN 清洁之前请务必拔掉电源并静待本产品冷却。切勿使用流水冲洗本产品,或将其浸入水中。仅可使用湿布擦拭外表面。

请勿使用钢丝球或擦洗剂。清洁过程中可使用少量餐具洗涤剂。

切勿使用任何溶剂进行清洗,例如酒精、汽油或苯类产品。建议定期取出面包屑托盘进行清理。

防尘盖用于多士炉闲置时盖在烤面包槽上,以确保机器内部保持洁净,同时便于储存和使用。注意,机器冷却后使用防尘盖。

注意:烘烤面包时请勿使用防尘盖。

检验合格

★若有任何需求请与下述地址联系:

☆德龙电器(上海)有限公司

地址:上海市普陀区凯旋北路1188号38层01-05室

电话: 021 3135 8858 传真: 021 3135 8262

客户热线: 400 827 1668 邮编: 200063

网址: www.braunhousehold.com

名称和产品中有害物质的含量

Name and content of hazardous substances in products

组件名称 Components Name	有害物质 Hazardous substances						备注 Remark
	铅 Lead (Pb)	汞 Mercury (Hg)	镉 Cadmium (Cd)	六价铬 Hexavalent Chromium (Cr (VI))	多溴联苯 Polybrominated biphenyls (PBB)	多溴二苯醚 Polybrominated diphenyl ethers (PBDE)	
印刷电路板 组装 Printed Circuit Board Assembly	X	○	○	○	○	○	
金属零件 Metal parts	○	○	○	○	○	○	

本表格依据SJ/T 11364的规定编制。This table is prepared in accordance with the provisions of SJ/T 11364.

○:表示该有害物质在该部件所有均质材料中的含量均在GB/T 26572规定的限量要求以下。

○:The content of such hazardous substance in all homogeneous material of such components is below the limit required by GB/T 26572.

X:表示该有害物质至少在该部件的某一均质材料中的含量超出GB/T 26572规定的限量要求。主要是由于受技术发展水平限制，暂时无法实现替代或减量化，但这部分零部件本身不直接与食物接触，正常使用条件下不会对使用者造成任何健康影响。我们的产品均通过食品安全检测，可安心使用。

X: The content of such hazardous substance in a certain homogeneous material of such components is beyond the limit required by GB/T 26572, mainly due to the level of technical development situation, temporarily unable to achieve replacement or reduction. But this part of the component itself does not directly contact with food, it will not cause any health issue under normal conditions of use. All our products passed Food Safety Monitoring and can be used safely.