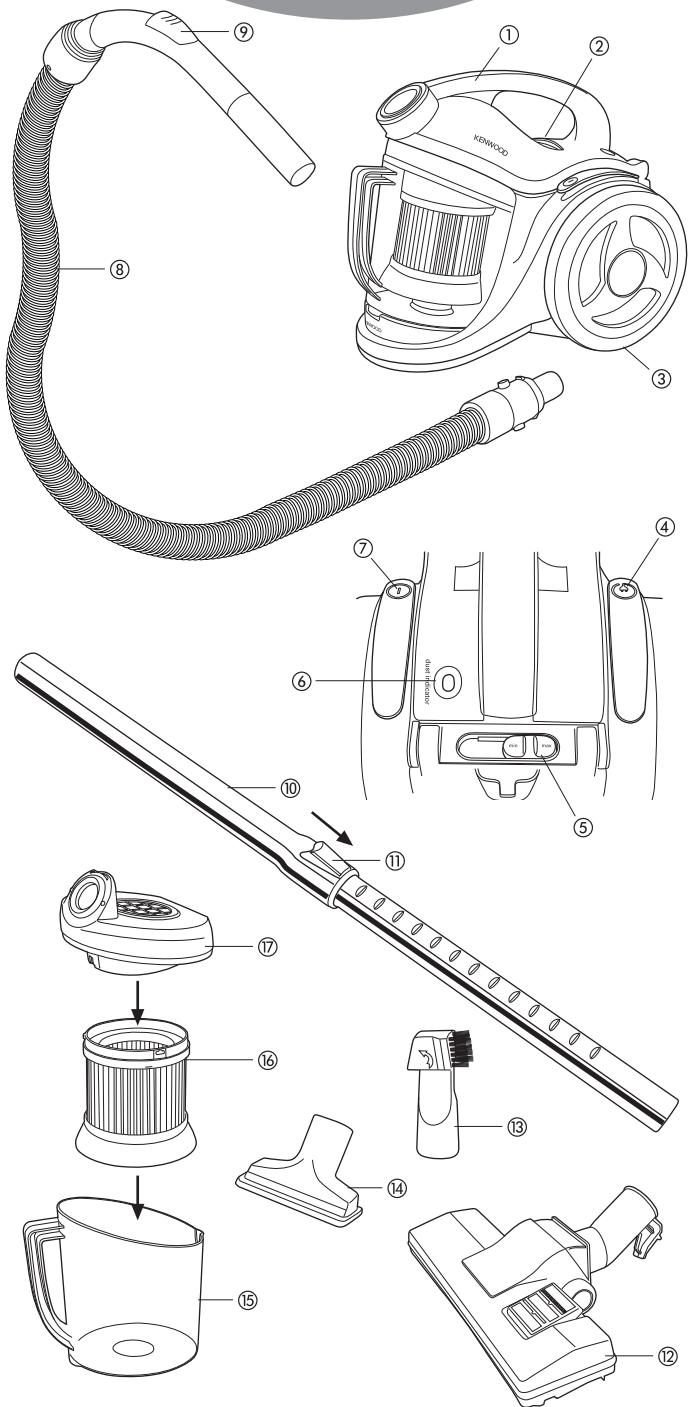


KENWOOD



VC6000 series
VC6200 series
VC6300 series
VC6800 series



English

safety

- Trailing cords are a hazard, keep them out of the way to prevent accidents.
- Never run the vacuum cleaner over the cord and keep the cord away from heated surfaces or sharp edges.
- Never unplug by pulling on the cord. To unplug grasp the plug not the cord.
- Only carry the vacuum cleaner by the handle provided, do not pull or carry by the cord.
- The appliance is not intended for use by young children or infirm persons unless they been adequately supervised by a responsible person to ensure that they can use the appliance safely.
- Never leave the vacuum cleaner on unattended,
- Never use a damaged vacuum cleaner. Get it checked or repaired: see 'service and customer care'.
- Don't touch the appliance with wet or damp hands.
- Do not immerse the appliance in water or other liquids.
- Keep children away from the vacuum cleaner. Always unplug the vacuum cleaner when not in use.
- To reduce the risk of electric shock, do not use outdoors or on wet surfaces.
- Never use an unauthorised attachment.
- Keep hair, loose clothing, fingers and all parts of the body away from openings and moving parts.
- Turn off all controls before unplugging.
- Always switch off and unplug before fitting or removing attachments.
- Do not use without a dust bag or filter in place.
- Never use the vacuum cleaner to pick up liquids.
- Do not pick up flammable or combustible liquids such as petrol or use the vacuum cleaner in areas where they may be present and do not pick up anything that is burning or smoking, such as cigarettes, matches or hot ashes.
- Do not put any object into openings and do not use if any opening is blocked. Keep free of lint, hair and anything that may reduce airflow.
- Do not extend the cord beyond the red mark.
- Do not use extension cords or outlets with inadequate current carrying capacity.
- Use extra care when cleaning on stairs
- Unplug electrical appliances before vacuuming them

before plugging in

- Make sure the electricity supply is the same as the one shown on the underside of the vacuum cleaner.

Important – UK only

The wires in the cord are coloured as follows;

Blue = Neutral

Brown = Live

- The appliance must be protected by a 13A approved (BS1362) fuse.
- For non-rewireable plugs the fuse cover **MUST** be refitted when replacing the fuse. If the fuse cover is lost then the plug must not be used until a replacement can be obtained. The correct fuse cover is identified by colour and a replacement may be obtained from your Kenwood Authorised Repairer (see Service).
- If a non-rewireable plug is cut off it must be **DESTROYED IMMEDIATELY**. An electric shock hazard may arise if an unwanted non-rewireable plug is inadvertently inserted into a 13A socket outlet.
- This machine complies with European Economic community Directive 89/336/EEC

before using for the first time

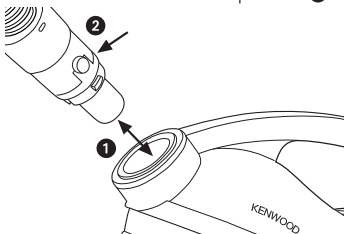
1. Remove all packaging.
2. Make sure that all the openings that suck in air such as the suction pipe are not blocked. If they are blocked, clear the item(s) before switching on.
3. Make sure that both filters and the dust bag are correctly located. (see 'care and cleaning').

key

- ① carry handle
- ② cover release lever
- ③ wheel
- ④ cord rewind button
- ⑤ variable power control
- ⑥ dust indicator
- ⑦ on/off button
- ⑧ flexible hose
- ⑨ air release valve
- ⑩ telescopic extension tube
- ⑪ adjusting lever
- ⑫ floor brush
- ⑬ crevice/dust tool
- ⑭ upholstery tool
- ⑮ dust canister
- ⑯ canister filter
- ⑰ canister lid

to use the vacuum cleaner

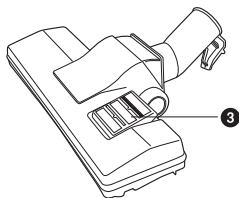
1. Push the end of the flexible hose into the handle nozzle until it clicks into place.
2. Push the swivel fitting on the end of the flexible hose into the vacuum cleaner until it locks into position ①.



- To remove, first unplug the appliance from the power supply then press the buttons either side ② and remove the hose.

3. Unwind sufficient length of cord and connect to the power supply. A yellow mark on the cord indicates the ideal length, don't extend the cord beyond the red mark.
 - To rewind the cord, press the cord rewind button with one hand and guide the cord into the appliance with the other hand. Failure to do this may cause damage.
4. Fit the wide end of the telescopic extension tube to the flexible hose.
 - Adjust the length of the tube by moving the lever on the side of the tube in the direction indicated and at the same time pull out the inner extension tube to the desired length. To shorten the tube repeat this procedure but push the smaller tube inside the larger tube.
5. Select the required tool and push onto the end of the tube.

Note: the motor has a slow start up so you will only hear the motor and suction noises after several seconds. At higher settings the delay is reduced.
floor brush, crevice and upholstery tools



- The floor brush can be used on carpets and hard floors. It is fitted with two wheels to help smooth operation on all surfaces. Select the required height for the bristles by pressing the lever on top of the floor brush into the required position ③. The crevice/dust and upholstery tools need to be stored separately from the vacuum cleaner.
- Use the crevice tool to clean in narrow spaces such as behind radiators, in crevices and corners. With the dusting head swiveled into place this tool can also be used for dusting flat or uneven surfaces.
- Use the upholstery tool to clean furniture, blinds, curtain etc.

English

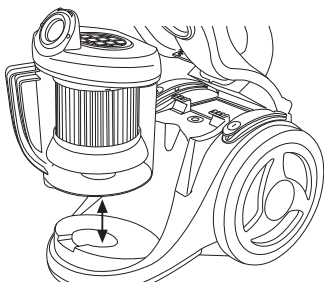
3. Check that the air release valve is closed, then switch on by pressing the on/off button. Ensure that the area you are vacuuming is well lit.
- The air release valve on the hose handle allows you to adjust the suction or to release anything attached to the nozzle.
7. Switch off after use.

care and cleaning

- Always switch off and unplug the vacuum cleaner before emptying the dust bag or cleaning the filters.

to empty the dust canister

1. Remove the swivel fitting of the flexible hose from the front of the vacuum cleaner.
2. Open the cover by lifting the cover release lever and then lifting the cover.
3. Remove the dust canister. Lift off the filter/lid assembly and empty the canister.



4. Replace the filter/lid assembly and put the dust canister back in the vacuum cleaner.
5. Close the cover by pressing down until it locks into position.

cleaning the filters

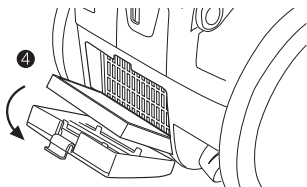
The filters should be cleaned at least twice a month or when they become visibly dusty. Failure to do so may cause reduced suction or damage the motor.

1. Canister filter. To remove the canister filter from the lid, turn the lid in an anti-clockwise direction. This is a HEPA filter which will help to improve the quality of household air by filtering out dust, pollens and other small

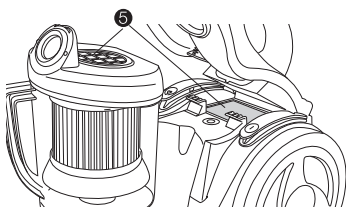
particles. When visibly dirty, the canister filter should be washed in warm water. Do not use detergent or other cleaners. Do not attempt to wash in washing machine. Allow to dry normally, then replace. After the canister HEPA filter has been washed 5 or 6 times it should be replaced with a new replacement filter.

2. Rear filter. This is also a HEPA filter. It is **not** washable. When visibly dirty it should be replaced with a new replacement filter. To remove it, open the rear cover by pushing down on the small clip and then remove the filter ④.

For your nearest stockist of kenwood replacement HEPA filters call your KENWOOD retailer or distributor.



3. Internal filters. These are normal plastic fabric filters. Remove and wash in warm water, dry thoroughly and then replace ⑤. The filter in the canister lid should be removed from the underside of the lid.



Do not wash the filters in a washing machine and always allow to dry naturally.

4. Store the vacuum cleaner in a dry area.

Important

The dust canister must be emptied if the dust canister full indicator is visible whilst the cleaner is operating and with the nozzle away from the floor.

The vacuum cleaner stops automatically if a blockage

occurs in the nozzle/tube/hose or if the filters are blocked with dirt. If the vacuum cleaner stops working because of a blockage, disconnect from the power supply and allow the cleaner to cool for 20-30 minutes. Remove the blockage and/or clean the filters. Restart the vacuum cleaner.

service and customer care

- If the cord is damaged it must, for safety reasons, be replaced by KENWOOD or an authorised KENWOOD repairer.

If you need help with:

- using your vacuum cleaner or
- servicing or repairs (in or out of guarantee)

Contact the Kenwood distributor or your authorised Kenwood repairer.

Have your model number ready - it's on the underside of the vacuum cleaner