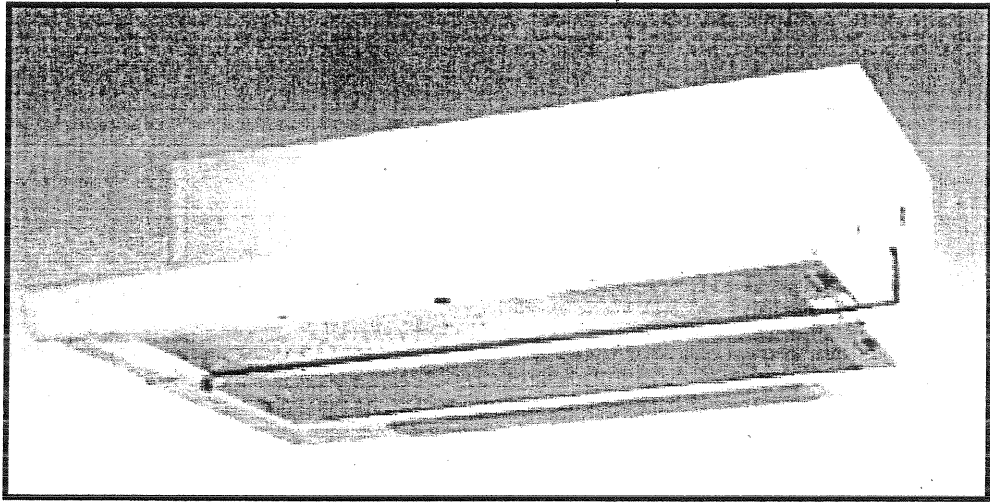


# TF 60 / TF 90



# USER MANUAL

Fig. 1

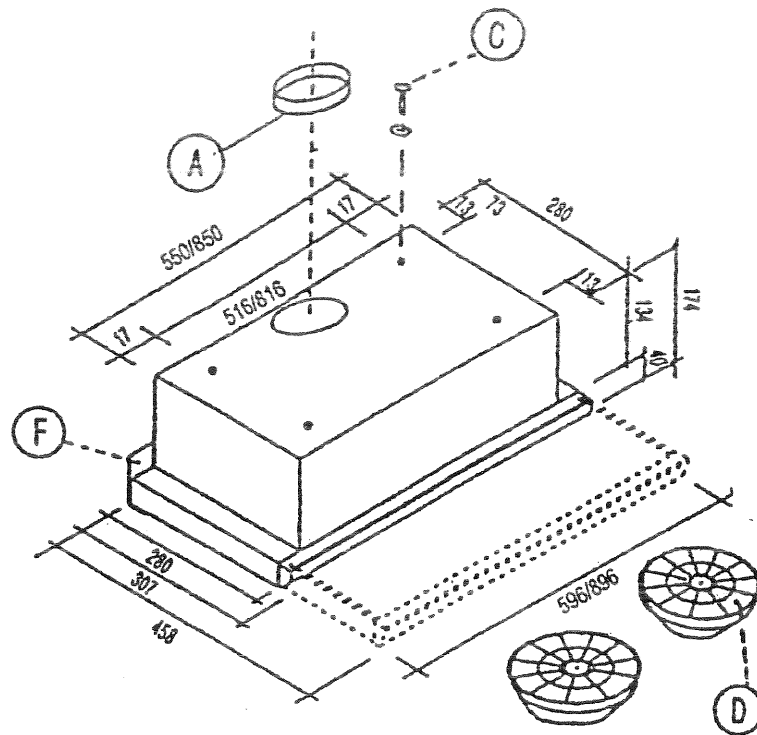
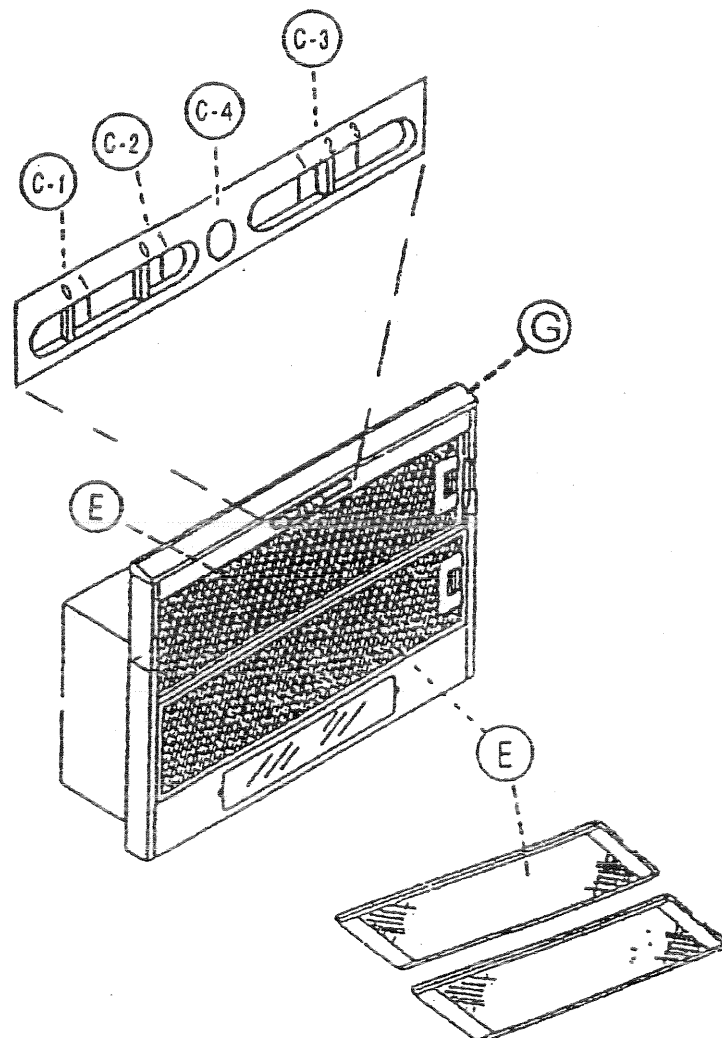


Fig. 2



## **IMPORTANT**

PLEASE READ ALL INSTRUCTIONS CAREFULLY, BEFORE COMMENCING INSTALLATION. CHECK THAT THE ELECTRICAL SUPPLY DATA QUOTED ON THE RATING PLATE OF THE APPLIANCE AGREES WITH THAT OF YOUR SUPPLY.

- The appliance must be installed by a Service Agent, or similarly qualified technician, in order to avoid a hazard.
- The rangehood must be fixed directly to a wall or mounted in the lower part of a hanging rangehood.
- Do not install the rangehood close to a window.
- Do not immerse unit, plug or cord in water
- Do not spray unit with liquids
- Before performing any maintenance, disconnect the rangehood from the mains power supply
- Disconnect the rangehood before removing or replacing any parts
- Do not operate in the presence of explosive and / or flammable fumes
- Do not operate any appliance with a damaged cord, after the appliance malfunctions or has been dropped or damaged in any manner
- Do not let the cord touch any hot surfaces
- Do not check the filter when appliance is working
- Do not touch the lamps after prolonged use of the appliance
- No food must be cooked flaming under the hood
- Do not have an unprotected flame under the rangehood
- Do not leave fried food unattended whilst cooking under the rangehood
- The appliance is not intended for use by young children or the infirm without supervision
- Young children should be supervised to ensure that they do not play with the appliance
- This product is for HOUSEHOLD USE only and not for commercial or industrial use
- Do not switch on the appliance unless completely assembled and adjusted
- The manufacturers refuse to accept any responsibility for eventual damages, because of failure to observe the above instructions

## **WARNING**

When the supply cord is damaged, it must be replaced by the manufacturer or its Service Agent or similarly qualified person, in order to avoid hazard.

This appliance complies with the directions EMC 89/336/EEC revised 92/31/EEC and 93/68/EEC.

If the room contains a flued fuel burning appliance which is not of the "Balance Flue" type – make sure there is an adequate air inlet to the room at all times so that fumes are not drawn down the flue.

## **ELECTRICAL CONNECTION**

- The connection to the electrical mains must be made as follows:  
BLUE .....(N) NEUTRAL  
BROWN .....(L) LIVE
- As the colour of the wires in the mains lead of this appliance may not correspond with the coloured markings identifying the terminals in your plug, proceed as follows:
  - The wire which is coloured BROWN must be connected to the terminal which is marked with letter "L" or coloured RED
  - The wire which is coloured BLUE must be connected with the terminal which is marked with a letter "N" or coloured BLACK
- If the terminals of the plug are unmarked or if you are in any doubt, consult a qualified electrician
- If it is not supplied, fit an Australian approved 10amp plug to the cord
- In the case of a direct connection to the mains, it is necessary to fit a double pole switch of suitable current rating with minimum of 3mm opening between contacts.

**ATTENTION: Should the lamps not work, make sure they are tightened.**

## **VENTING OPTIONS**

- The hood is designed for either external venting or internal venting (re-circulated filtered).

## **INSTALLATION**

- The cooker hood is supplied with
  - 1 spacer
  - 4 screws
  - 2 bulbs
- When installed, the hood must be not less than 70cm above electric burner or 80cm above gas or mixed-fuel burners.

- This hood is designed for fitting in a cabinet or on some other support. For mounting, use the four 4mm screws supplied with the hood (C). Once firmly secured adjust the spacer (F) to fill in the gap between the rangehood and the wall.
- Before completing any connection, make sure the voltage corresponds with the voltage indicated on the data label.

#### **EXTERNALLY VENTED**

- The air is vented outdoors by a duct which must be connected to the exhaust port @ 100mm-120mm using the connector ring (A).
- The hood must not be connected to the fuel exhaust flues or to a duct in which hot air is circulated, or is used to remove the fumes from anything other than electrical appliances.
- When operating gas appliances or similar in the vicinity of the rangehood, allow adequate ventilation ie. open door or window - to provide enough air for the combustion process.
- The exhaust of the rangehood can only be incorporated in the same flue as other electrical appliances.

#### **INTERNAL VENTING (USING CARBON FILTER)**

- When there is no exhaust duct for venting outdoor, you can use a carbon filter (D). The air is cleansed by the carbon filter and returned back into the room. Filters are not washable and have to be replaced approximately every two (2) months.
- To fit the carbon filters, remove the two grease filters (E) fig. 2, from the rangehood, and locate each carbon filter on the centre lug of each fan by pushing up and turning the filter 90° to lock it in place.
- Re-fit the grease filters back to their original position.
- The air is released back into the room through a connecting pipe, which goes through the hanging cupboard and is connected to the connecting ring supplied (A) fig 1.

#### **OPERATION INSTRUCTION**

- Switch on the lamps (L) fig 2.
- Pull out the grill (G) more than 50mm
- Slide the switch (C-1) from position "0" to "1" FAN SPEED (fig 2)
- Pull out the grill (G) more than 50mm

- Slide the switch (C-2) from position "0" to "1" at low speed
- Adjust the fan to high speed by sliding the switch (C-3) from position "2" to "3"
- Switch off the appliance by sliding the switch (C-2) from position "1" to "0"
- LED (C-4) will be oh when the fans are running

#### **MAINTENANCE**

- The efficient functioning of the hood depends on regular maintenance, particularly with respect to the filter (E) and activated charcoal filters (D).
- It is necessary to clean the grease filter at least every two months as follows:
  - Remove the grease filters and wash it with a solution of lukewarm water and mild liquid detergent, allowing the dirt to soften.
  - Rinse thoroughly in lukewarm water.
- Ensure the fan and surrounding surfaces are kept clean using a moist cloth and mild cleaning detergent.
- Do not use harsh abrasive cleaners.

#### **CHANGING THE BULBS**

- Disconnect the power to the hood
- Remove the lamp cover
- Always replace burnt-out lamps, with olive-shaped max 40 watt bulbs
- Re-fit the lamp cover.

Should the rangehood ever require service, contact Parex Industries Ltd:

Australia	1800 126 659
New Zealand	(09) 915 7273