

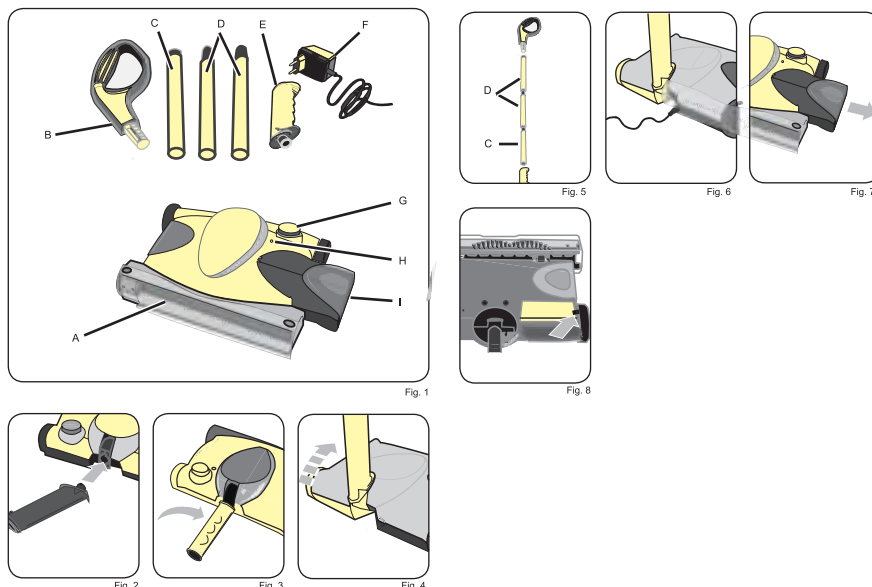


cordlessweeper

Instructions

SAVE THESE INSTRUCTIONS FOR
FUTURE REFERENCE
DESCRIPTION OF THE APPLIANCE

- A Rotating brush
- B Handle
- C Lower rod segment
- D Upper rod segments
- E Rod support
- F Charger
- G On/Off button
- H Operation indicator
- I Dust container



HOW TO INSTALL THE APPLIANCE

- 1) Insert the rod support (E) in the seat on the back of the appliance (Fig 2).
- 2) Rotate the rod support in clockwise direction, upwards, until it locks (Fig 3).
- 3) Pull up the rod support (Fig 4).
- 4) Insert the lower segment with the shortest plastic insert (C) in the rod support. Connect the two remaining segments (D) to the lower segment to form the rod (Fig 5).
- 5) Insert the handle (B) in the upper part of the rod.

FIRST USE

The appliance is sold with uncharged battery. Before using it for the first time, keep charging the appliance for at least 10-12 hours.

Incomplete charging before first use can compromise the appliance performance.

BATTERY CHARGE

- 1) Connect the charger to the base (Fig 6).
- 2) Insert the charger plug into a standard outlet. The ON indicator light (H) turns on.
- 3) For a full charge, keep the appliance charging for 6-8 hours.
- 4) Disconnect the charger from the base. After a full charge, the appliance can work for 40-50 minutes.

INSTRUCTIONS FOR USE

Turn the appliance on and off

Press the on/off button (G) to start the appliance.

Press again the on/off button to turn off the appliance.

Do not use the appliance if the dust container is not inserted into the base.

Empty the dust container

- 1) Pull the dust container (I) to the left to remove it (Fig 7).
- 2) Empty and clean the container.
- 3) Insert again the container in the base.

CLEANING AND MAINTENANCE

Regular maintenance and cleaning preserve and maintain the appliance efficient for a longer period.

Warning!

All cleaning operations described below must be made with power off and the electrical plug disconnect from the power outlet.

Don't try to repair the appliance on your own.

Appliance cleaning-Warning!

Don't immerse the base in water. Don't use aggressive products or solvents that may damage the plastic.

Wash the appliance using a slightly wet, non-abrasive cloth, water and few drops of a non-aggressive product.

IMPORTANT SAFEGUARDS

READ THESE INSTRUCTIONS CAREFULLY.

- This appliance is designed only and solely for private use, and is therefore to be considered unsuitable for industrial or professional purposes.
- Do not leave the appliance exposed to weathering (rain, sun, etc..).
- Do not leave the packaging near children because it is potentially dangerous.
- This appliance can be used by persons who have reduced physical sensory or mental capabilities, or lack of experience and knowledge, only if they are monitored by a responsible person or if they have received and understood the instructions and dangers which may arise during the appliance use.
- This appliance can be used by children aged 8 years and up if properly monitored or if you have received instructions regarding the appliance safe use and if they understand the dangers involved.
- Children shall not play with the appliance or its components.
- Always keep the appliance and the power cord out of the reach of children under the age of 8 years.
- Cleaning and maintenance by the user must not be carried out by children unless they are older than 8 years and are monitored during the operation.
- Before plugging the appliance into the mains socket, ensure that the voltage shown on the rating plate matches the local voltage supply.
- Always connect the appliance to an earthed socket.
- Do not place the appliance on or near heat sources.
- Do not collect very hot objects or objects that are smoking or burning such as cigarettes, matches or ashes that are still hot.
- Do not pick up flammable or combustible material (volatile liquids, such as gasoline, kerosene, etc.) or use in the presence of large amounts of water.
- Do not immerse the appliance, the plug or the power cord in water or other liquids. Clean them with a damp cloth.
- Switch off the appliance when its use is completed and before inserting or removing individual parts or before cleaning it.
- Make sure that your hands are dry before using or adjusting the switches on the appliance, or before touching the plug and power connections.
- Do not disconnect the charger from the power socket pulling it by the cord.
- Do not leave the power cord against sharp edges or sharp parts.
- Any modifications made on this product that are not explicitly authorised by the manufacturer may lead to the forfeiture of its safety and guarantee of its use by the user.
- In the event that this appliance is to be disposed of, it is suggested that the power cord is cut off. It is also recommended that all potentially dangerous components including the power cord are rendered harmless to prevent personal injury. Do not let children play with the appliance or its components.
- Do not use the appliance if the power cord or the plug are damaged, or if the appliance is faulty. All repairs, including the power cord replacement, must be carried out only by the Service Center or by authorized technicians, in order to avoid any risk.

SAVE THESE INSTRUCTIONS FOR FUTURE REFERENCE

TROUBLESHOOTING

In the event of malfunctions, switch off the appliance immediately

Problems	Causes	Remedies
The appliance does not work.	Low batteries.	Charge the batteries.
	Faulty appliance.	Contact an Service Center.
The rotating brush does not collect dust.	The dust container is full.	Empty the dust container.
	The brush is blocked.	Remove the material that caused the block.
	The batteries are low.	Recharge the batteries.
There are leaks of dust from the appliance.	The dust container is full.	Empty the dust container.
The appliance does not charge properly.	The charge does not work.	Replace the charger.
	The batteries are no longer usable.	The batteries must be replaced. To access the battery compartment, loosen the screw on the bottom of the appliance (Fig 8).