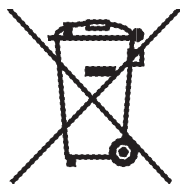


IMPORTANT SAFEGUARDS

- 1) Read the instructions carefully
- 2) The appliance contains pressurised steam. Incorrect or improper use could be dangerous. The appliance is designed for household use only as described in the manual. The manufacturer declines all liability for damage deriving from improper use of the product.
- 3) Do not leave the appliance unsupervised when plugged into the mains.
- 4) After use and before cleaning the appliance or carrying out maintenance, always unplug from the mains.
- 5) Before use, make sure the mains voltage corresponds to the voltage indicated on the rating plate on the bottom of the appliance.
- 6) Plug the appliance into an efficiently earthed socket with a minimum rating of 10 A.
- 7) Never direct the steam jet towards power sockets or appliances containing electrical components such as those inside ovens. They could be damaged.
- 8) Never direct the steam jet towards the appliance.
- 9) Never unplug the appliance by pulling the power cable or appliance itself. Do not touch the plug with wet hands.
- 10) Do not run the appliance over the power cable. Avoid closing the door on the cable or rubbing it over sharp edges. Keep it away from hot surfaces. Never place the appliance in a vertical position. Always keep the appliance in a horizontal position when in use.
- 11) DO NOT OPEN THE CAP WHILE USING THE APPLIANCE OR BEFORE ALL THE WATER HAS BEEN COMPLETELY USED UP. When this occurs, steam is no longer discharged from the handgrip or tools. To add water, unplug from the mains and wait about 15 minutes to avoid sudden temperature changes and prevent water or steam from flowing back through the filling hole. Place a cloth over the cap and unscrew slowly to allow residual steam to escape slowly.
- NEVER fill the appliance under a tap. Always use a suitable jug or other recipient.
- 12) Avoid the steam coming into contact with the skin. The high temperature could cause serious burns. Never direct the steam jet towards persons or animals or towards surfaces or objects with could be damaged by high temperatures.
- 13) To move the appliance, hold it by the handgrip. As it contains a steam generator, surfaces become hot during use. Persons affected by particular pathologies causing abnormal sensitivity to heat should take special care when using this appliance.
- 14) Do not add detergent to the tank. Use water only.
- 15) Never wash the appliance with triethylene or other solvents. Clean with a damp cloth and normal washing up liquid only. Do NOT immerse the appliance in water.
- 16) Take the utmost care when using the appliance to clean stairs.
- 17) If not used for long periods, you are recommended to evaporate the water completely before putting the appliance away.
- 18) Keep the appliance out of reach of children or persons not capable of using it without supervision.
- 19) Do not use the appliance if it appears to be faulty. Contact your local dealer or an authorised service centre.
- 20) Protect the appliance from atmospheric agents (rain, frost, sun, etc).
- 21) For all repairs and for replacement of the power cable if damaged contact your dealer or an authorised service centre to maintain the efficiency of your appliance and the validity of the guarantee. For the same reasons, you are always recommended to use original spare parts.

KEEP THESE INSTRUCTIONS CAREFULLY

IMPORTANT INFORMATION FOR CORRECT DISPOSAL OF THE PRODUCT IN ACCORDANCE WITH EC DIRECTIVE 2002/96/EC.



At the end of its working life, the product must not be disposed of as urban waste.

It must be taken to a special local authority differentiated waste collection centre or to a dealer providing this service.

Disposing of a household appliance separately avoids possible negative consequences for the environment

and health deriving from inappropriate disposal and enables the constituent materials to be recovered to obtain significant savings in energy and resources. As a reminder of the need to dispose of household appliances separately, the product is marked with a crossed-out wheeled dustbin.

DESCRIPTION

- A Handgrip
- B "Steam ready" light
- C "No water" light
- D ON/OFF switch and light
- E Steam generator cap
- F Cable ties
- G Tool holder

Tools

- H Extension tubes
- I Triangular brush
- L Carpet/floor brush
- M Cloth for carpet/floor brush and triangular brush
- N Crevice tool
- O Brushes for crevice tool
- P Squeegee for crevice tool

PREPARATIONS FOR USE

Filling the steam generator

Before performing maintenance or cleaning the appliance, make sure it is unplugged from the mains.

- Open the steam generator by pressing down on the safety cap and turning (fig. 1).
- You should fill the steam generator (fig. 2) with a maximum of 1.2 litres of tap water (overfilling could cause the appliance to malfunction).
- Press down on the cap and screw up.

Preparing the cleaning tools

All the tools provided can be used on either the extension tubes or the handgrip.

To fit, just push on until they click into place (fig. 3). To remove, press the button and pull, taking care not to pinch your fingers.

USING THE APPLIANCE

- Plug the appliance into the mains.
- Press the ON/OFF switch (D). The light on the switch comes on.
- When the "steam ready" light (B) comes on, the appliance is ready to use.
To use the steam press the button on the handgrip (fig. 5). To stop steam delivery just release the button.

NB: When used for the first time, the appliance may give out smoke and an odour for several minutes. This is caused by heating and subsequent drying of the sealers used in assembling the steam generator. You are recommended to ventilate the room.

REFILLING THE STEAM GENERATOR SAFELY

When the "no water" light (C) comes on (fig. 6), the steam generator must be filled.

Proceed as follows:

- To discharge all the steam, press the button on the handgrip.
Never open the cap until the water is completely finished.
- Turn the appliance off using the ON/OFF switch (D) and unplug from the mains socket.
- Wait about 15 minutes to let the steam generator cool down and avoid flowback of water while refilling.
- Place a cloth over the steam generator cap (E) and open the cap slowly and carefully to allow residual steam to escape.
- Fill the steam generator again as described above.

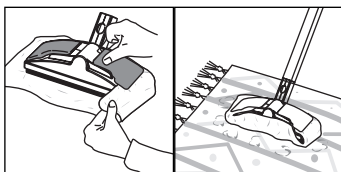
AFTER USE

After use, put the appliance away tidily by unplugging, wrapping the power cable around the cable ties and putting the tools away on the tool holder (fig. 4).

TIPS FOR CLEANING

Rugs and carpet

Tools: carpet/floor brush + cloth attached to the spring clips.

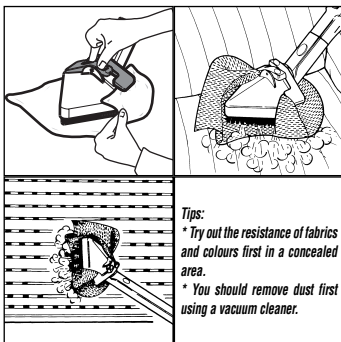


Tips:

- * Try out the resistance of fabrics and colours first in a concealed area.
- * You should remove dust first using a carpet beater or vacuum cleaner.

Armchairs, sofas, cushions, mattresses, car interiors, blinds, vertical walls, garden furniture, gazeboes, garden umbrellas and rocking chairs.

Tools: triangular brush + cloth attached to the spring clips.

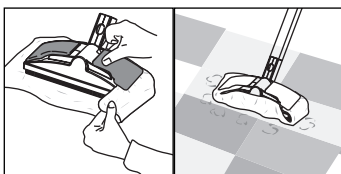


Tips:

- * Try out the resistance of fabrics and colours first in a concealed area.
- * You should remove dust first using a vacuum cleaner.

Hard floors

Tools: carpet/floor brush + cloth attached to the spring clips.

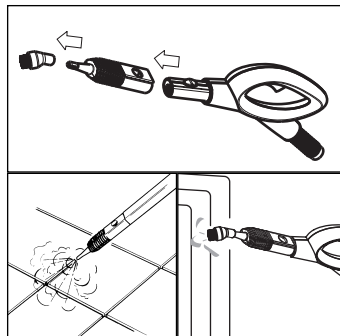


Tips:

- * Not recommended for treated cotton floors, wax polished floors and parquet.

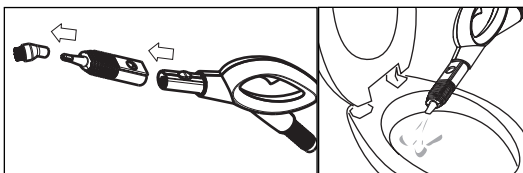
Joints between tiles, radiators, shutters, door jams, inaccessible points, vases, bicycles, mountain bikes, car engines, motorbikes, garden equipment (mower), children's toys (swing)

Tools: crevice tool + brush



Bathroom (shower cubicle, sanitary fittings, basins, swimming pools)

Tools: crevice tool + brush directly on hose or extension tube.



Mirrors, windows, car windows, verandas and greenhouses

Tools: crevice tool + squeegee directly on hose or extension tube.

IMPORTANT: in low temperatures, you are recommended to warm the windows first with a weak jet of steam to avoid the risk of breakage due to sudden temperature changes.

