

Some notions on humidity

Air always contains a certain amount of water in the form of vapour. This determines the level of humidity in an atmosphere.

The capacity of the air to hold water vapour increases with temperature.

This is why in our homes, as soon as the temperature decreases, the vapour contained in the air condenses, as is evident on the colder surfaces in the room, such as the windows, walls etc.

The purpose of a dehumidifier is to remove the excess moisture from the air, avoiding the damage caused by condensation.

Experts have established that the optimum environmental conditions for our well being and for the home are obtained between 40% and 60% relative humidity.

With temperatures near 5°C, you are recommended to heat the room even minimally.

With heating, the condensation formed by the water vapour on windows and other cold surfaces evaporates into the air to be collected by the dehumidifier.

IMPORTANT INFORMATION FOR THE CORRECT DISPOSAL OF THE PRODUCT IN ACCORDANCE WITH EUROPEAN DIRECTIVE 2002/96/EC.



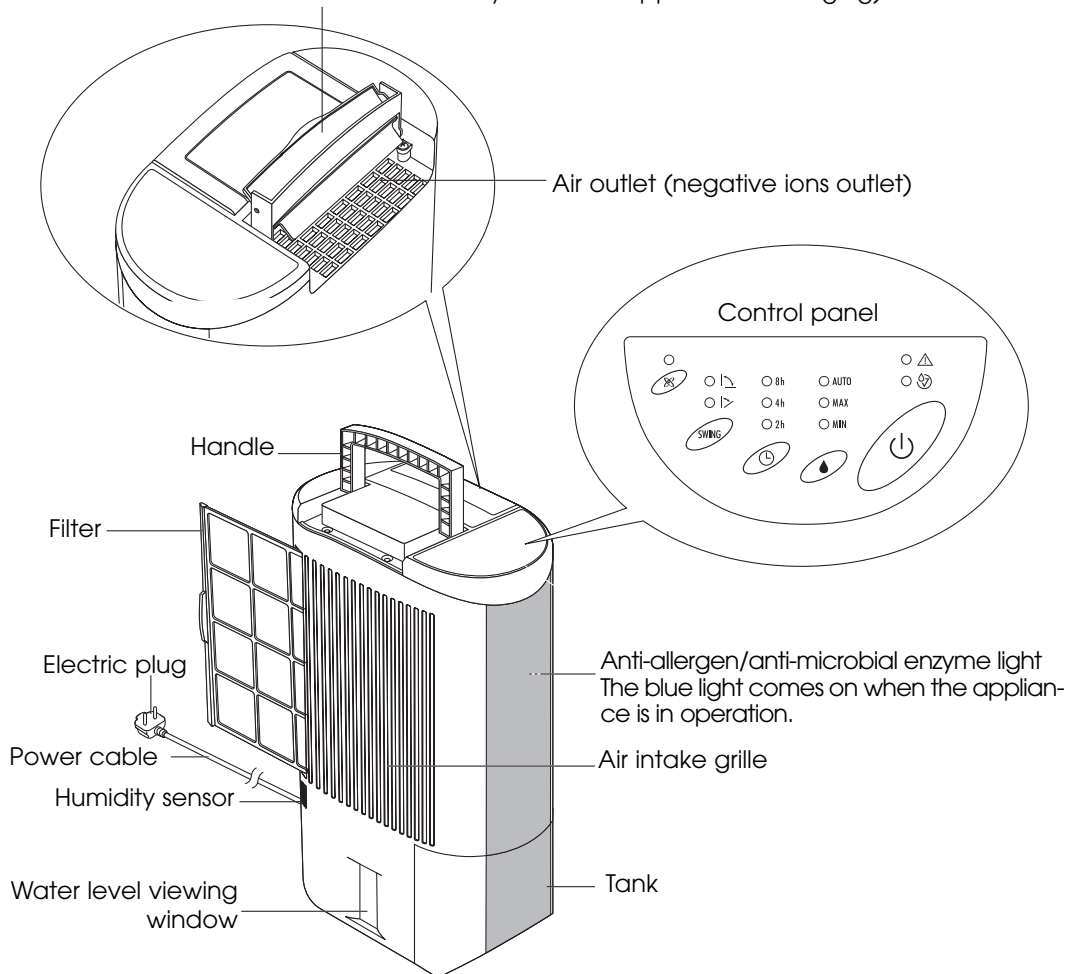
At the end of its working life, the product must not be disposed of as urban waste. It must be taken to a special local authority differentiated waste collection centre or a dealer providing this service.

Disposing of household appliances separately avoids all possible negative consequences for the environment and health deriving from inappropriate disposal and enables constituent materials to be salvaged, resulting in considerable savings of energy and resources.

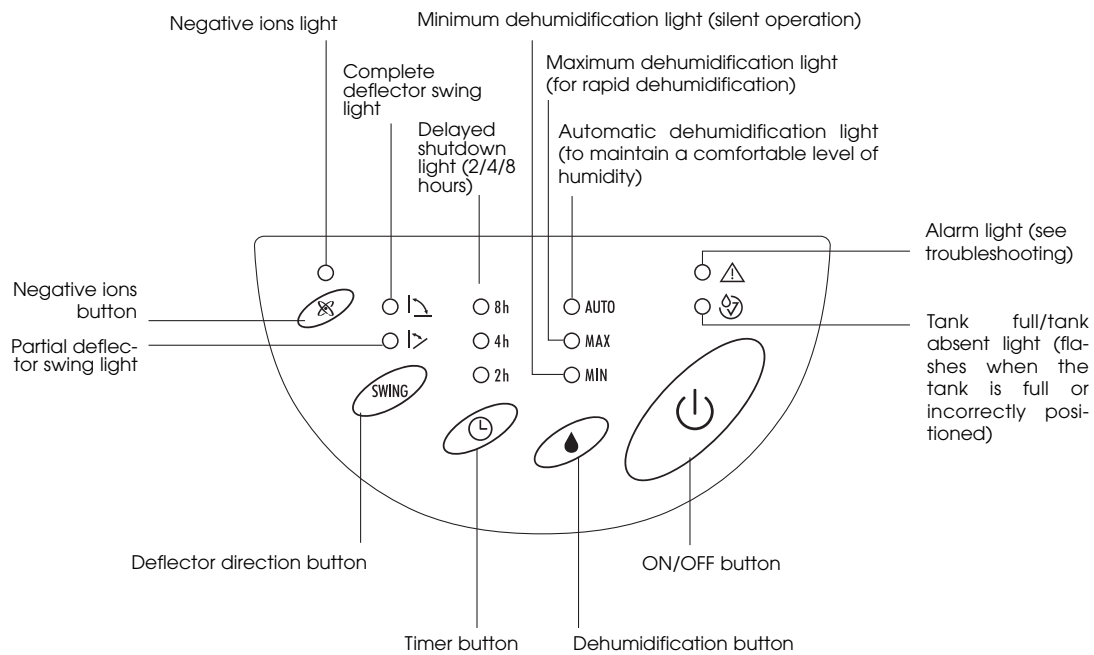
As a reminder of the obligation to dispose of household appliances separately, the product is marked with the symbol of a barred refuse bin.

Description

Deflector with fin manually adjustable to three positions (the deflector should not be moved manually while the appliance is swinging).



Control panel



Warnings

- Use this appliance only as described in this instruction manual.
- As with all electrical equipment, whilst the instructions aim to cover as many eventualities as possible, caution and common sense should be applied when operating and installing this appliance.
- This appliance is designed to dehumidify domestic rooms and must not be used for other purposes.
- It is dangerous to modify or alter the characteristics of the appliance in any way.
- If the appliance requires repair, always contact a Service Centre authorised by the manufacturer. Always insist on original spare parts.
Repairs carried out by unauthorised personnel may be dangerous and invalidate the guarantee.
- The appliance must not be used by young children or unfit persons without adequate supervision.
- Do not allow children to play with the appliance.
- The appliance must be installed in accordance with the rules on household appliances in force in the country concerned.
- If the power cable is damaged, it must be replaced by the manufacturer, an authorised service centre or a qualified electrician in order to eliminate all risk.
- The appliance must be connected to an efficient earth installation.
- Have your electrical circuit checked by a qualified electrician.
- Do not use extension leads.
- Before cleaning or maintenance operations, always unplug the appliance from the power socket.
- Do not move the appliance by pulling the power cable.
- Do not install the appliance in rooms containing gas, oil or sulphur. Do not install near sources of heat.
- Do not use the appliance on sloping surfaces.
- Keep the appliance at least 50 cm away from flammable substances (alcohol etc) or pressurised containers (e.g. aerosol cans).
- Do not rest heavy or hot objects on top of the appliance.
- Clean the air filter regularly.
- Remember to drain the condensate tank before moving the appliance.
- At the end of its working life, consign the appliance to a specialist collection centre.
- The materials used for packaging can be recycled.
- You are therefore recommended to dispose of them in special differentiated waste collection containers.
- Do not use the appliance outdoors.
- Do not obstruct the air intake or outlet.
- Do not insert fingers or other objects into the air intake or outlet openings.
- Do not insert metal objects into the apertures.
- Danger! Rotating parts; contact with the internal fan could cause electric shock or injury.
- Do not drink the water collected from the appliance or use it as animal drinking water.
- Before moving the appliance, turn off the switch and empty the water in the tank.
- Water could leak out and wet other objects and cause electric shocks or fire.

Assistance

Keep the list of Service Centres and identify the Centre nearest you.

Electrical connections

After moving the appliance, wait at least an hour before turning it on again.

Before plugging the appliance into the mains socket, check that:

- The mains power supply corresponds to the power supply indicated on the rating plate.
- The power socket and electrical circuit are adequate for the appliance.
- The power socket matches the plug. If this is not the case, have the plug replaced by a qualified electrician;
- The mains socket is adequately earthed.

Installation

Position the appliance in the room to be dehumidified.
Respect the minimum distances between the appliance and furniture or walls (fig. 1).
Failure to do so would obstruct ventilation, jeopardising correct operation of the appliance.

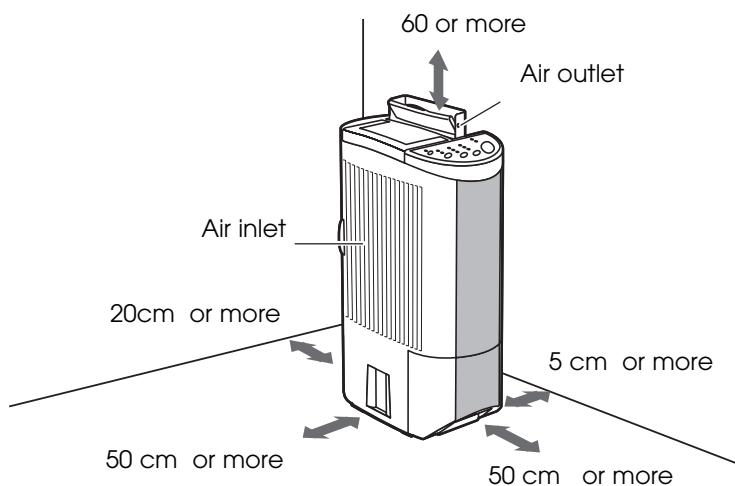


fig. 1

When the appliance is functioning.

You should keep all doors and windows closed while the appliance is in operation.
If doors and windows are opened, the temperature and humidity in the room may change and it could therefore require longer to dehumidify the room.

With temperatures of less than 1 °C or above 40 °C, dehumidification is automatically deactivated and the appliance switches to fan only mode.

If the humidity is lower than 20%, the safety circuit triggers automatically and the dehumidifier shuts down to avoid damage.

If the humidity in the room drops, the dehumidification capacity is automatically reduced.

Continuing to dehumidify a room reduces the humidity and, as a result, the dehumidification capacity of the appliance.

Do not drop or tilt the appliance.

If the appliance falls over, place it upright immediately.

Even when the room is dehumidified, condensation and mould may form externally or in poorly ventilated points, for example behind furniture.

How to dehumidify

How to dehumidify

- 1) Plug the appliance into a mains socket.
- 2) Press the ON/OFF button.
 - Make sure the "tank full/tank missing" light is off. If it is on, position the tank correctly or empty it.
 - The deflector opens completely and the appliance comes on in automatic mode.
(The Auto light comes on, together with the anti-allergens/anti-microbial enzyme light against allergens and the propagation of mould and bacteria.)
Press the POWER OFF/ON button again to turn the appliance off (all lights go off).
The fan remains in operation for about two minutes after the appliance is turned off, to allow the heating element to cool down.

Selecting the operating mode

Press the dehumidification button (💧). Each time you press the dehumidification button (💧), the relative indicator light comes on (AUTO, MAX, MIN).

Auto: to maintain a comfortable level of humidity.

Max: to dehumidify rapidly.

Min: for silent operation.

Important: Wait two minutes before unplugging the appliance from the mains as the fan continues to operate for about two minutes after the appliance has been turned off to cool the heating element.)

Note: The humidity level is maintained at around 55% in Auto mode and the appliance therefore comes on and goes off automatically.

(When a humidity of 55% is reached, the appliance switches into fan mode.)

Setting the timer

Before using this function, make sure the appliance is on.

Each time you press the TIMER button, the timer setting is changed (2,4,8 hours).

The timer indicator lights come on in sequence as the time goes by to indicate the time left.

When the timer is set, even if the tank full light is flashing, after emptying and repositioning the tank, the appliance continues to operate for the time left.

Emission of negative ions

Before using this function, make sure the appliance is on.

Press the negative ions button (⌘). The negative ions indicator light comes on and the appliance emits negative ions from the air outlet grille. Press the button again to interrupt negative ion emission.

(The negative ions indicator light goes off).

A large quantity of negative ions are produced, quantitatively similar to those present in environments such as forests or waterfalls.

These are microscopic particles which create a negative electrical field in the air.

The deflector

You can set the deflector to swing automatically.

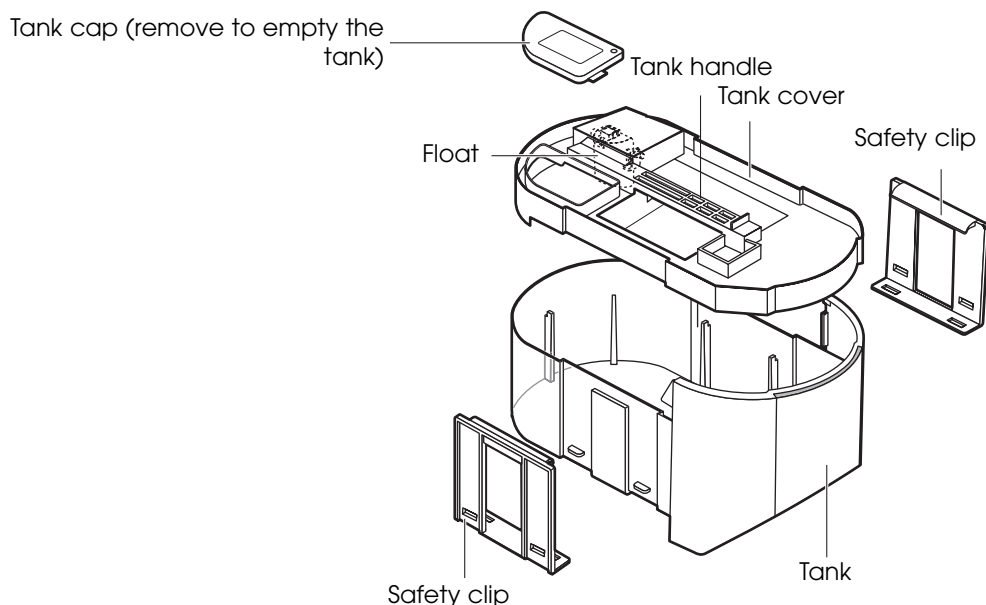
Press the SWING button to set automatic swing of the deflector.

Each time you press the SWING button, the setting switches from complete deflector swing to partial deflector swing then off.

Adjusting the fin

You can adjust the fin manually to extend the radius of the air flow (three positions).

Emptying the tank



When the tank is full (about 2 litres), the appliance stops automatically.

The tank full light flashes

(The other lights go off.)

When the empty tank is put back, the appliance starts functioning according to the previous settings.

(The tank full light goes off).

Removing the tank

- 1 Extract the tank slowly
Hold the appliance and remove the tank using the handle.
- 2 Remove the cap and empty the tank.
- 3 Replace the cap.
- 4 Push the tank into place delicately.

Important:

Make sure you have put the cap back before replacing the tank, otherwise the water could leak out. When you remove the tank, do not touch internal parts of the dehumidifier.

It could damage the appliance. Make sure to push the tank into place delicately.

If it knocks against the walls or is incorrectly inserted, the appliance may not function.

(The tank full light flashes.)

Remove the tank then replace delicately in position.

Maintenance/Cleaning

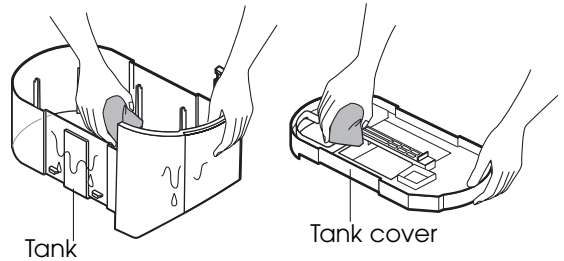
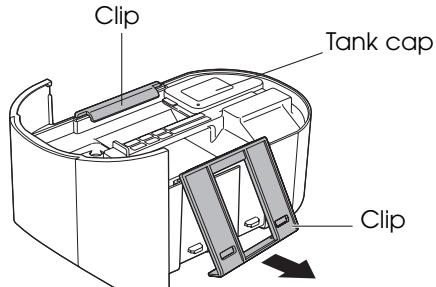
Maintenance

Turn the appliance off (press the ON/OFF button).
Unplug from the mains.
Empty the water.

Cleaning the tank assembly (once a month)

Removing the tank assembly

- 1 Remove the right and left clips
- 2 Remove the tank cover. Pull upwards and extract
- 3 Remove the cap



Replacing the tank assembly

Follow the procedure in reverse.

Rinse these components with water two or three times.
Use mild washing-up liquid to remove stubborn marks.

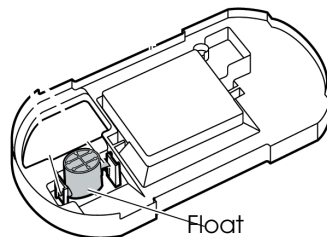
Make sure you replace the tank cover, cap and clips, otherwise water could leak out.

Depending on where the dehumidifier is used, the inside of the tank may become dirty as a result of dirt and dust contained in the air.

Make sure you put the tank back by pushing it gently into place, (otherwise the appliance will not work).

Cleaning the float

You can eliminate the dirt without removing the float.



Cleaning/important safeguards

Maintenance

Always unplug the appliance from the power socket before performing any cleaning or maintenance operations.

For safety reasons, never wash the dehumidifier using a jet of water.

Cleaning the cabinet

- Clean the appliance using a damp cloth then dry with a dry cloth.
- Never use petrol, alcohol or solvents to clean the appliance.
- Never spray liquid insecticide or similar products as they may deform the plastic.

Cleaning the air filter

If the filter is dirty, air circulation is compromised and the efficiency of the dehumidifying and air purifying functions decreases.

It is therefore good practice to clean the filter at regular intervals.

The frequency depends on the duration and conditions of operation.

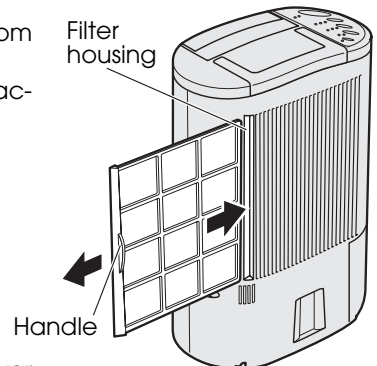
If the unit is used constantly or systematically, you are recommended to clean the filter once a week.

- Before use, the filter is a light brown colour. This colour does not indicate the presence of dirt.

Removing the filter

- Remove the filter using the handle.
- Use a vacuum cleaner to remove dust accumulations from the filter.

Never wash the filter with water to avoid removing the bactericide extracts of green tea and catechin.



If the appliance is not used for long periods

- After having unplugged the appliance from the power socket, empty the tank.
- Clean and reposition the filter.
- Cover the appliance with a plastic bag to protect it from dust.

Troubleshooting

Check the following points before calling your local authorised Service Centre.

PROBLEM	Cause	Solution
The appliance does not work in dehumidifying mode (indicator light off)	<ul style="list-style-type: none"> •the appliance is not plugged in •there is no current •the tank is full of water •the tank is incorrectly positioned •the float is detached 	<ul style="list-style-type: none"> •plug into the mains •check the power supply •empty the tank •position the tank correctly •put back in position
The appliance is operating in dehumidifying mode (light on), but the humidity does not decrease	<ul style="list-style-type: none"> •the filter is blocked •the temperature or humidity in the room are too low •the area is too big •too many sources of humidity in the room (pots of boiling water, etc.) •the air intake and outlet grills are blocked. 	<ul style="list-style-type: none"> •clean the filter •in certain conditions, it is normal for the appliance not to dehumidify (in these cases the room being dehumidified should also be heated) •remove the obstructions
Alarm light on and 8-hour timer light flashing	<ul style="list-style-type: none"> •the filter is blocked •the air intake and outlets are blocked. •The humidity is too low 	<ul style="list-style-type: none"> •clean the filter. •remove the obstructions •The appliance is operating in a room with a minimum of 20% humidity
Alarm light on and MAX light flashing	<ul style="list-style-type: none"> •The humidity in the room is too low 	<ul style="list-style-type: none"> •The appliance is operating in a room with a minimum of 20% humidity
Alarm light on and other lights flashing		<ul style="list-style-type: none"> •Contact the dealer for repair

Technical Specifications

- Power supply voltage
- Absorbed power
- Maximum power input
- Absorbed current
- Quantity of negative ions
- Humidistat
- Fan speeds
- Air filter
- Dimensions WxHxD
- Tank capacity
- Operating limits:
 - temperature
 - relative humidity

See rating plate
"
"
10000/cm³ approx
yes
3
yes
475x175x304mm
2 litres approx
Dehumidifying
1° - 40°
30 - 95%

ENGLISH