
Air Purifier with Ionizer

Épurateur d'air avec ionisateur

Luftreiniger mit Ionisator

Purificatore d'aria con ionizzatore

Luchtzuiveringsapparaat met Ionisator

Purificador de Aire con Ionizador

Purificador de Ar com Ionizador

Ιονιστής αέρα

Luftrenser med ioniseringsanordning

Luftrenare med jonisator

Ilmanpuhdistaja - ionisoja

Luftrenser med ioniseringsanordning

Instructions for use

Mode d'emploi

Gebrauchsanweisung

Istruzioni per l'uso

Gebruiksaanwijzing

Instrucciones para el uso

Instruções para o uso

Οδηγίες χρήσης

Bruksanvisning

Bruksanvisning

Käyttöohje

Contents	GB	Table des matières	F
General instructions		Avertissement	
Features		Caractéristiques techniques	
Description of appliance		Description de l'appareil	
Instructions for use		Mode d'emploi	
Cleaning the appliance		Nettoyage de l'appareil	
Maintenance and filter replacement		Maintenance et changement du filtre	
Inhalt	D	Indice	I
Wichtige Hinweise		Avvertenze	
Technische Angaben		Caratteristiche tecniche	
Gerätebeschreibung		Descrizione dell'apparecchio	
Inbetriebsetzung		Istruzioni per l'uso	
Pflege und Reinigung des Gerätes		Pulizia dell'apparecchio	
Instandhaltung und Filterwechsel		Manutenzione e sostituzione del filtro	
Inhoudsopgave	NL	Índice	E
Waarschuwingen		Advertencias	
Technische kenmerken		Características técnicas	
Beschrijving van het apparaat		Descripción del aparato	
Gebruiksaanwijzing		Instrucciones para el uso	
Reinigen van het apparaat		Limpieza del aparato	
Onderhoud en vervanging van het filter		Mantenimiento y reemplazo del filtro	
Índice	P	Περιεχόμενα	GR
Advertências		Προειδοποιήσεις	
Características técnicas		Τεχνικά χαρακτηριστικά	
Descrição do aparelho		Περιγραφή της συσκευής	
Instruções para o uso		Οδηγίες χρήσης	
Limpeza do aparelho		Καθαρισμός της συσκευής	
Manutenção e substituição do filtro		Συντήρηση και αντικατάσταση του φίλτρου	
Innholdsfortegnelse	DK	Innehållsförtecknings	S
Advarsler		Allmänna instruktioner	
Tekniske specifikationer		Teknisk information	
Beskrivelse af apparatet		Beskrivning av apparaten	
Brugsanvisninger		Instruktioner för användning	
Rengøring af apparatet		Rengøring av apparaten	
Vedligeholdelse og udskiftning		Underhåll och byte av filter	
Kiftning af filtrene			
Innholdsfortegnelse	N	Sisällysluettelo	SF
Generelle instruksjoner		Yleiset ohjeet	
Teknisk informasjon		Tekniset tiedot	
Beskrivelse av apparatet		Laitteen kuvaus	
Instruksjon for bruk		Käyttöohjeet	
Rensing av apparatet		Laitteen puhdistaminen	
Vedlikehold og skifting av filter		Huolto ja suodattimien vaihto	

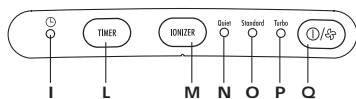
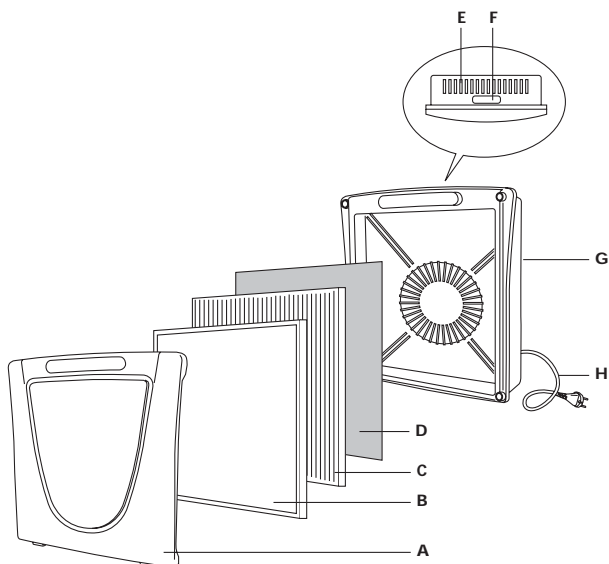


Fig.1

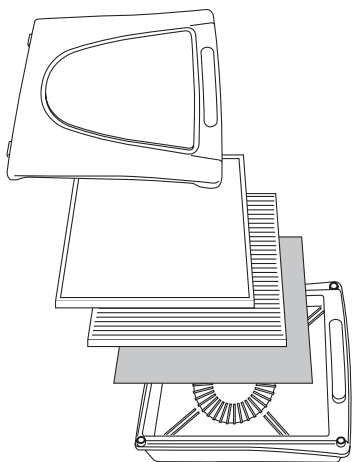


Fig. 2

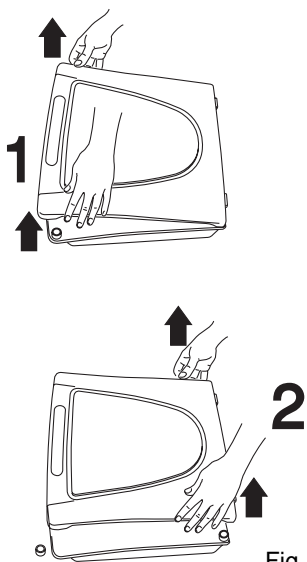


Fig. 3

READ THIS BOOKLET CAREFULLY BEFORE USING THE APPLIANCE.
THIS IS THE ONLY WAY TO ENSURE BEST RESULTS AND
MAXIMUM SAFETY.

GB

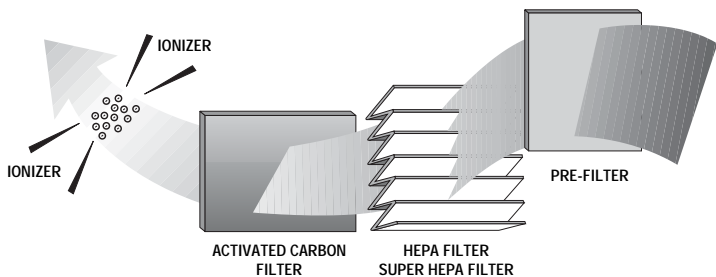
GENERAL INSTRUCTIONS

- This appliance must be used exclusively for the purpose for which it was expressly conceived, namely as a domestic air purifier. Any other use is considered improper and thus dangerous. Improper, incorrect or irresponsible use and/or repairs performed by unqualified personnel absolve the manufacturer from all liability for resulting damage.
- After unpacking, make sure the appliance is complete and undamaged. If in doubt, do not use and consult a qualified electrician.
- The plastic bag containing the appliance must not be left within reach of children as it could represent a hazard.
- Before plugging the appliance into the mains electricity supply, make sure the mains voltage corresponds to the voltage indicated on the rating plate.
- If the plug fitted to the appliance does not match the power socket, have the socket replaced with a suitable type by a qualified professional.
- If the supply cord is damaged, it must be replaced by the manufacturer, its service agent or similarly qualified persons in order to avoid a hazard.
- Children or infirm persons should not be allowed to use this product unsupervised
- Children should not be allowed to play with this appliance
- Never immerse the appliance in water.
- When the appliance is plugged into the mains, always respect the following fundamental safety rules:
 - never touch the appliance with damp or wet hands;
 - do not use the appliance with bare or damp feet;
 - do not pull the power cable or appliance itself to unplug from the mains;
 - keep the appliance out of reach of children;
 - do not insert foreign bodies into the appliance;
 - protect the appliance from atmospheric agents and do not use out of doors;
 - do not obstruct the air intake and outlet grills;
- If the power cable is damaged, it must be replaced at once by specialist personnel authorised by the manufacturer only.
- If the appliance is to be disposed of definitively, after unplugging from the mains socket, you are recommended to remove the power cable to make it unusable.
- Before cleaning or maintenance of any sort, always unplug the appliance from the mains socket.
- In the event of breakdown and/or malfunction, turn the appliance off. Do not attempt to repair it.
- For all repairs, contact professional service centres only and insist on the use of original spare parts and accessories.
- Before use, always check that the power cable is undamaged.

KEEP THESE INSTRUCTIONS IN A SAFE PLACE FOR FUTURE REFERENCE

FEATURES

- 1. De'Longhi air purifiers incorporate the latest technology in domestic air filtration;
- 2. A powerful silent fan motor draws in the air from the front panel;
- 3.The contaminated air passes through a washable prefilter which removes the larger impurities such as dust and pollen. The partially filtered air is then passed through a long-lasting HEPA filter with a large filtering surface. This is easily recognisable as it is made with special folded paper. This HEPA (High Efficiency Particulate Air) filter removes impurities down to 0.1 micron in size, filtering all types of particles and even bacteria.
- 4. The air then passes through an activated carbon filter which removes odours. The filter is dark grey and is easily distinguished by its highly porous appearance;



- 5. Purified air is then returned to the room through the top mounted grill. The upward movement of filtered air promotes efficient circulation without causing unpleasant drafts;
- 6. When switched on, an independently controlled ionizer releases a cloud of negative ions into the outgoing filtered air;
- 7. When coming into contact with the negative ions, small airborne particles become negatively charged. These can then combine with positively charged particles to form larger particles which are subsequently filtered by the purifier; otherwise, the negative particles will be attracted to positively charged surfaces such as walls or floors;
- 8. The negative ions help create a better balance of ions in the room as, generally, there is a predominance of positive ions over negative ones. So ionizing helps reduce the static electricity created by rugs, carpets, televisions and computer screens.

GENERAL FEATURES	
Voltage	
Frequency	see rating label
Absorbed power	
Suitable for rooms of up to	30 m ³
Number of fans	1
Fan speed	3
Ioniser control	•

DESCRIPTION OF APPLIANCE

- | | |
|---------------------------------------|----------------------------|
| A) Front panel | I) Timer light |
| B) Washable prefilter | L) Timer button |
| C) HEPA filter | M) Ionising button |
| D) Anti-odour activated carbon filter | N) Silent light |
| E) Filtered air outlet grill | O) Standard light |
| F) Handle | P) Turbo light |
| G) Power cable | Q) ON/OFF/fan speed button |
| H) Plug | |

INSTRUCTIONS FOR USE

1. Unpack the air purifier and place it on a flat, stable surface so that the air inlet (front grill) and air outlet (top grill) are not blocked. A good place to position the appliance could be at least a metre away from a wall.
2. Remove the front grill (A). Inside you will find the filters packed in plastic bags;
3. Remove the filter packaging. Position the filters in the order shown in the diagram: activated carbon filter (black), resting directly against the inside of the purifier so that it stays there, then the HEPA filter, resting against the activated carbon filter and finally the prefilter.
4. Replace the front panel;
5. Check that the voltage in your home corresponds to that indicated on the appliance, then plug the appliance into the mains socket.
6. Turn the appliance on by pressing the ON-OFF/fan speed button (Q), then press the button again to select the required fan speed (quiet, standard, turbo).

Quiet mode: use this mode when you want the purifier to work silently.

Standard mode: use this mode when you want the purifier to work at medium speed.

Turbo mode: use this mode when you want the purifier to work at maximum speed in smoky or particularly dusty atmospheres.

The light corresponding to the mode selected comes on.

7. To release negative ions into the room with the purified air, press the ioniser button. The light on the button comes on.

8. Programme mode:

To activate programme mode, with the appliance on, press the timer button. The appliance goes off after three hours.

CLEANING THE APPLIANCE

Clean the outside of the air purifier with a soft, clean, damp cloth to remove dust, grime and fingerprints.

The front grill and prefilter within it can be removed and washed separately in warm, soapy water (NOT in a dishwasher). Dry the components carefully before replacing.

The top air emission grill can be cleaned with a small, soft brush.

WARNING: Never immerse the appliance in water to clean the purifier.

MAINTENANCE AND FILTER REPLACEMENT

1. Remember that the efficiency of your purifier depends largely on the condition of the filters. These should therefore be checked regularly.
2. Remove the front panel. Inspect the prefilter. If a considerable amount of dust and other dirt has accumulated, remove the filter from the grill and wash it by hand in warm soapy water. Dry well before replacing;
3. The life of the HEPA and activated carbon filters depends on the conditions of use. In general, with continuous 24-hour operation at medium speed in conditions with normal amounts of dust/smoke in the air, the HEPA filters last about 12-18 months and the activated carbon filters about 6-12 months.
To change the activated carbon filter, first remove the HEPA filter, then remove the activated carbon filter and replace with a new one. Before replacing the front panel, check that the prefilter is clean. Frequent cleaning of the prefilter will help prolong the life of the HEPA filter;
4. When the white filter becomes dark grey or brown, it needs replacing.
Do not wash the activated carbon or HEPA filters. Once exhausted, these filters can no longer be used.
5. De'Longhi replacement filters are available from our service centres and home appliance retailers.



IMPORTANT INFORMATION FOR CORRECT DISPOSAL OF THE PRODUCT IN ACCORDANCE WITH EC DIRECTIVE 2002/96/EC.

At the end of its working life, the product must not be disposed of as urban waste.

It must be taken to a special local authority differentiated waste collection centre or to a dealer providing this service.

Disposing of a household appliance separately avoids possible negative consequences for the environment and health deriving from inappropriate disposal and enables the constituent materials to be recovered to obtain significant savings in energy and resources. As a reminder of the need to dispose of household appliances separately, the product is marked with a crossed-out wheeled dustbin.

ELECTRICAL CONNECTION (UK ONLY)

- A) If your appliance comes fitted with a plug, it will incorporate a 13 Amp fuse. If it does not fit your socket, the plug should be cut off from the mains lead, and an appropriate plug fitted, as below.

WARNING: Very carefully dispose of the cut off plug after removing the fuse: do not insert in a 13 Amp socket elsewhere in the house as this could cause a shock hazard. With alternative plugs not incorporating a fuse, the circuit must be protected by a 15 Amp fuse.

WARNING - THIS APPLIANCE MUST BE EARTHED IMPORTANT

The wires in the mains lead are coloured in accordance with the following code:


Green and yellow: Earth
Blue: Neutral
Brown: Live



If the plug is a moulded-on type, the fuse cover must be re-fitted when changing the fuse using a 13 Amp Asta approved fuse to BS 1362. In the event of losing the fuse cover, the plug must NOT be used until a replacement fuse cover can be obtained from your nearest electrical dealer. The colour of the correct replacement fuse cover is that as marked on the base of the plug.

- B) If your appliance is not fitted with a plug, please follow the instructions provided below:

As the colours of the wires in the mains lead may not correspond with the coloured markings identifying the terminals in your plug, proceed as follows:

The green and yellow wire must be connected to the terminal in the plug marked with the letter E or the earth symbol  or coloured green or green and yellow.

The blue wire must be connected to the terminal marked with the letter N or coloured black.

The brown wire must be connected to the terminal marked with the letter L or coloured red.