

## IMPORTANT SAFEGUARDS

---

- 1) Read the instructions carefully
- 2) The appliance contains pressurised steam. Incorrect or improper use could be dangerous. The appliance is designed for household use only as described in the manual. The manufacturer declines all liability for damage deriving from improper use of the product.
- 3) Do not leave the appliance unsupervised when plugged into the mains.
- 4) After use and before cleaning the appliance or carrying out maintenance, always unplug from the mains.
- 5) Before use, make sure the mains voltage corresponds to the voltage indicated on the rating plate on the bottom of the appliance. 6) Plug the appliance into an efficiently earthed socket with a minimum rating of 10 A.
- 7) Never direct the steam jet towards power sockets or appliances containing electrical components such as those inside ovens. They could be damaged.
- 8) Never direct the steam jet towards the appliance.
- 9) Never unplug the appliance by pulling the power cable or appliance itself. Do not touch the plug with wet hands.
- 10) Do not run the appliance over the power cable. Avoid closing the door on the cable or rubbing it over sharp edges. Keep it away from hot surfaces.  
**Never place the appliance in a vertical position.** Always keep the appliance in a horizontal position when in use.
- 11) **When filling the tank, never place the appliance under the tap to add water.**
- 12) Avoid the steam coming into contact with the skin. The high temperature could cause serious burns. Never direct the steam jet towards persons or animals or towards surfaces or objects which could be damaged by high temperatures.
- 13) To move the appliance, hold it by the handgrip. As it contains a steam generator, surfaces become hot during use. Persons affected by particular pathologies causing abnormal sensitivity to heat should take special care when using this appliance.
- 14) Do not add detergent to the tank. Use water only.
- 15) Never wash the appliance with triethylene or other solvents. Clean with a damp cloth and normal washing up liquid only. **NEVER immerse the appliance in water.**
- 16) Take the utmost care when using the appliance to clean stairs.
- 17) If not used for long periods, you are recommended to evaporate the water completely before putting the appliance away.
- 18) Keep the appliance out of reach of children or persons not capable of using it without supervision.
- 19) Do not use the appliance if it appears to be faulty. Contact your local dealer or an authorised service centre.
- 20) Protect the appliance from atmospheric agents (rain, frost, sun, etc).
- 21) For all repairs contact your dealer or an authorised service centre to maintain the efficiency of your appliance and the validity of the guarantee. For the same reasons, you are always recommended to use original spare parts.
- 22) Each appliance is tested to ensure perfect operation, and consequently droplets of water may be noted through the water level indicator (H).
- 23) If the supply cord is damaged, it must be replaced by the manufacturer, its service agent or similarly qualified persons in order to avoid a hazard.

---

## KEEP THESE INSTRUCTIONS CAREFULLY

## DESCRIPTION

- A** Flexible hose with handgrip and steam regulation
- B** "Steam ready" light
- C** "No water" light
- D** ON/OFF switch and light
- E** Tank cap
- F** Cable tidies
- G** Tool holder
- H** Water level indicator

## Accessories

- I** Extension tubes
- L** Triangular brush
- M** Carpet/floor brush
- N** Cloth for carpet/floor brush and triangular brush
- O** Crevice tool
- P** Round brushes for crevice tool
- Q** In-line brush for crevice tool
- R** Squeegee for crevice tool

## PREPARATIONS FOR USE

### Filling the tank

Before performing maintenance or cleaning the appliance, make sure it is unplugged from the mains.

- To open the tank, remove the cap (fig. 1).
- Pour the water into the tank, taking care not to exceed the top notch on the water level indicator (H) (fig. 2).
- Close the cap.

### Fitting the hose to the appliance and preparing the cleaning tools

To fit the hose to the appliance, insert into the socket until it hooks into place (fig. 3). To remove, press the button and pull out (fig. 4). The tools provided have the same attachment system and can be used on either the extension tubes or the handgrip.

## USING THE APPLIANCE

- Plug the appliance into the mains.
- Press the ON/OFF switch (D). The light on the switch turns off.

To use the steam press the button on the handgrip (fig. 5). To stop steam delivery just release the button.

**NB: When used for the first time, the appliance may give out smoke and an odour for several minutes. This is caused by heating and subsequent drying of the sealers used in assembling the steam generator. You are recommended to ventilate the room.**

## STEAM REGULATION

The steam regulator is located on the hose at the bottom of the handgrip (fig. 6). This can be used to reduce or increase the quantity of steam according to the type of surface to be cleaned (eg. hard floors, tile joints - maximum steam; sofas, upholstery - minimum steam).

**When you turn the appliance on, you are recommended to turn the steam regulator to maximum.**

## TOPPING UP THE WATER IN THE TANK

When the "no water" light (C) comes on (fig. 7), the tank must be filled. Proceed as follows:

- Turn the appliance off using the ON/OFF switch (D) and unplug from the mains socket.
- Remove the cap and fill the tank with **cold** water. Replace the cap.

**IMPORTANT:** during operation, the appliance fills the steam generator with water from the tank (continuous fill). It is normal to hear the noise caused by filling at regular intervals to maintain constant steam pressure.

If the water in the tank **runs out completely**, there is still enough steam left for about 10 minutes operation, depending on the quantity being used. If you do not fill the tank, the pump vibrates and no more steam is given off.

When the water in the tank has been topped up, the appliance operates as if it were turned on for the first time. Before cleaning, you must therefore wait for the steam to be ready. This takes about three minutes, during which time the water is pumped into the steam generator.

When the water in the tank has run out, you should not continue steam cleaning, leaving the pump vibrating. If continued over time, this practice could irreparably damage internal components. **IMPORTANT:** there may be water on the surface under the appliance. This is caused by the pressure relief valve.

To avoid water spilling out of the tank when moving the appliance, always close the tank with the cap.

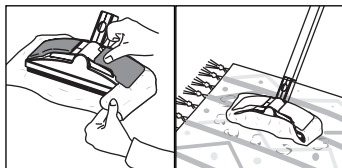
## AFTER USE

After use, put the appliance away tidily by unplugging, wrapping the power cable around the cable ties and putting the tools away on the tool holder (fig.8).

## CLEANING TIPS

### Rugs and carpet

Tools: carpet/floor brush + cloth attached to the spring clips.

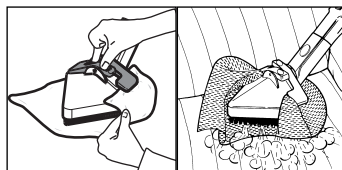


#### Tips:

- \* Try out the resistance of fabrics and colours first in a concealed area.
- \* You should remove dust first using a carpet beater or vacuum cleaner.

Armchairs, sofas, cushions, mattresses, car interiors, blinds, vertical walls, garden furniture, gazeboes, garden umbrellas and rocking chairs.

Tools: triangular brush + cloth attached to the spring clips.

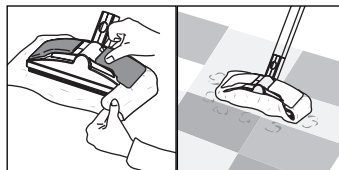


#### Tips:

- \* Try out the resistance of fabrics and colours first in a concealed area.
- \* You should remove dust first using a vacuum cleaner.

### Hard floors

Tools: carpet/floor brush + cloth attached to the spring clips.

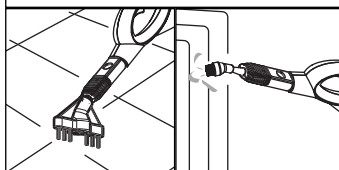
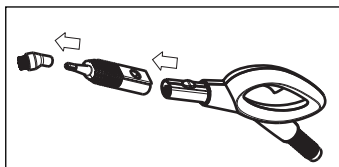


#### Tips:

- \* Not recommended for treated cotton floors, wax polished floors and parquet.

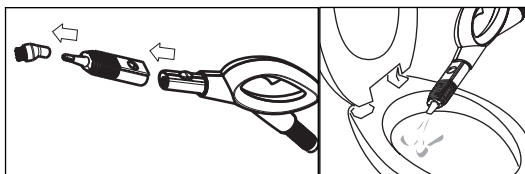
Joints between tiles, radiators, shutters, door jams, inaccessible points, vases, bicycles, mountain bikes, car engines, motorbikes, garden equipment (mower), children's toys (swing)

Tools: crevice tool + brushes (round or in-line).



## Bathroom (shower cubicle, sanitary fittings, basins, swimming pools)

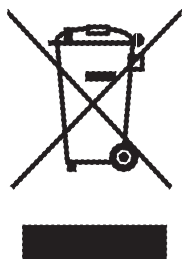
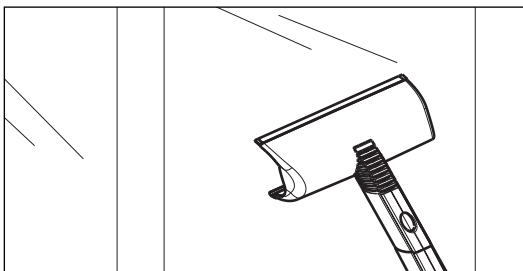
Tools: crevice tool + brushes (round or in-line) directly on the hose or extension tubes.



## Mirrors, windows, car windows, verandas and greenhouses

Tools: squeegee directly on the hose or extension tubes.

*Important: in low temperatures, you are recommended to warm the windows first with a weak jet of steam to avoid the risk of breakage due to sudden temperature changes..*



### Important information for correct disposal of the product in accordance with EC Directive 2002/96/EC.

At the end of its working life, the product must not be disposed of as urban waste.

It must be taken to a special local authority differentiated waste collection centre or to a dealer providing this service.

Disposing of a household appliance separately avoids possible negative consequences for the environment and health deriving from inappropriate disposal and enables the constituent materials to be recovered to obtain significant savings in energy and resources. As a reminder of the need to dispose of household appliances separately, the product is marked with a crossed-out wheeled dustbin.