

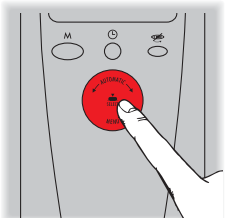
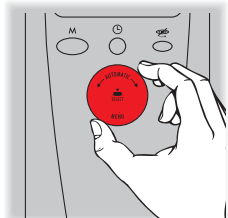
# Quick Guide MW769

**THANK YOU FOR HAVING CHOSEN THIS MICROWAVE OVEN.**

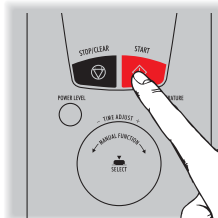
**THIS QUICK GUIDE SUMMARISES THE MAIN FUNCTIONS OF YOUR OVEN. FOR BEST RESULTS, WE RECOMMEND THAT YOU READ THE INSTRUCTION BOOKLET BEFORE USING THE APPLIANCE.**

## Automatic function

- 1 Prepare the food to be cooked in a Pyrex dish and place it inside the oven on the low wire rack: close the oven door.
- 2 Turn the top knob (SELECT – AUTOMATIC) until selecting the desired category and confirm by pressing the same knob.

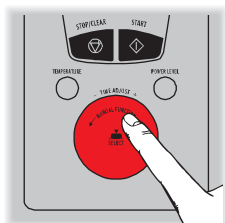
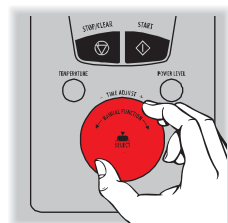


- 3 Turn the top knob (SELECT – AUTOMATIC) again (only if required by the recipe) until selecting the desired submenu.
- 4 Press the START key.

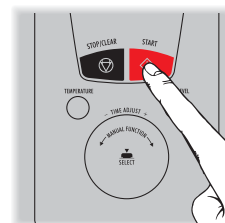
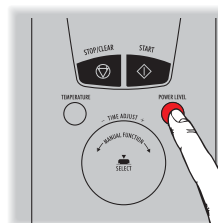


## Manual function: Micro

- 1 Prepare the food to be cooked in a Pyrex dish and place it on the turntable: close the oven door.
- 2 Turn the bottom knob (SELECT – MANUAL FUNCTION) until selecting the MICRO function and confirm by pressing the same knob.

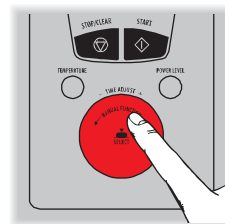
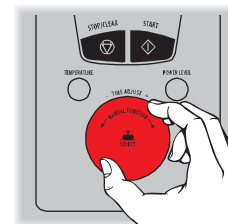


- 3 Select the cooking time by turning the bottom knob again.
- 4 Adjust the microwave power level, if necessary, by pressing the POWER LEVEL key repeatedly.
- 5 Press the START key.

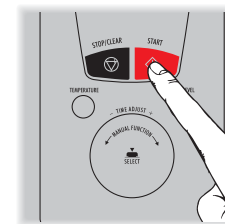
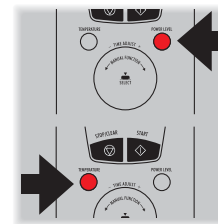


## Manual function: Micro fan

- 1 Prepare the food to be cooked in a Pyrex dish and place it on the low wire rack: close the oven door.
- 2 Turn the bottom knob (SELECT – MANUAL FUNCTION) until selecting the MICRO FAN function and confirm by pressing the same knob.
- 3 Select the cooking time by turning the bottom knob again.

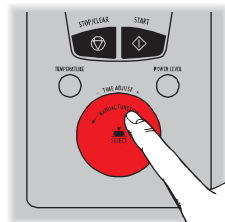
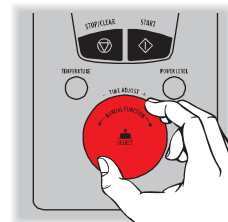


- 4 Adjust the microwave power level, if necessary, by pressing the POWER LEVEL key repeatedly.
- 5 Adjust the temperature, if necessary, by pressing the TEMPERATURE key repeatedly.
- 6 Press the START key.

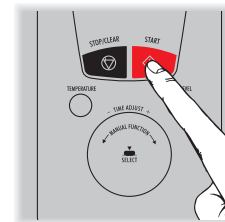
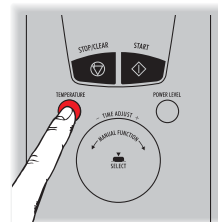


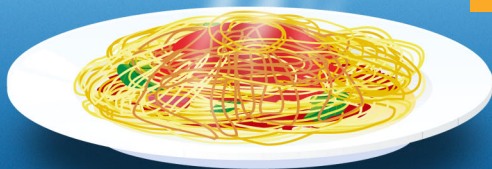
## Manual function: Fan

- 1 Place the low wire rack inside the oven and close the oven door.
- 2 Turn the bottom knob (SELECT – MANUAL FUNCTION) until selecting the FAN function and confirm by pressing the same knob.
- 3 Select the cooking time by turning the bottom knob again.
- 4 Adjust the temperature, if necessary, by pressing the TEMPERATURE key repeatedly.



- 5 Press the START key.
- 6 Once the oven reaches the set temperature (signalled by 5 short “beeps”), the previously set time will flash on the display.
- 7 Now place the food inside the oven, on the low wire rack, and press the START key.

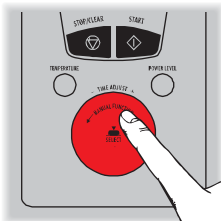
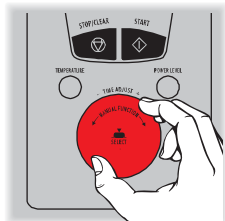




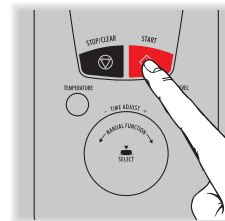
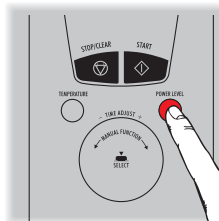
# Quick Guide MW769

## Manual function: Micro grill

- 1 Prepare the food to be cooked in a Pyrex dish and place it on the low wire rack: close the oven door.
- 2 Turn the bottom knob (SELECT – MANUAL FUNCTION) until selecting the MICRO GRILL function and confirm by pressing the same knob.

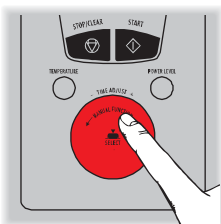
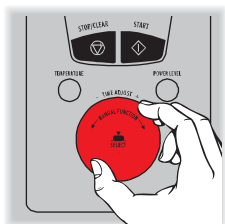


- 3 Select the cooking time by turning the bottom knob again.
- 4 Adjust the microwave power level, if necessary, by pressing the POWER LEVEL key repeatedly.
- 5 Press the START key.



## Manual function: Grill

- 1 Place the high wire rack inside the oven and close the oven door.
- 2 Turn the bottom knob (SELECT – MANUAL FUNCTION) until select the GRILL function and confirm by pressing the same knob.

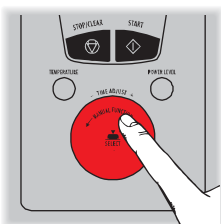
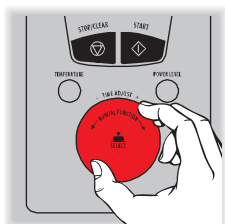


- 3 Select the cooking time by turning the bottom knob again.
- 4 Press the START key.
- 5 After 3 allowing minutes for preheating, place the food to be grilled on the wire rack and close the door again; press the START key.

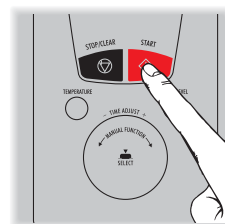
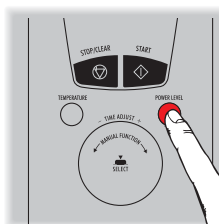


## Manual function: Defrost

- 1 Place the food to be defrosted directly on the turntable: close the oven door.
- 2 Turn the bottom knob (SELECT – MANUAL FUNCTION) until selecting the MICRO function and confirm by pressing the same knob.



- 3 Select the cooking time by turning the bottom knob again.
- 4 Press the POWER LEVEL key repeatedly until the display shows the message DEFROST.
- 5 Press the START key.



## Quick reheat

Place the food to be reheated inside the oven on the turntable, close the door and press the START key. The oven will operate automatically for 30 seconds at the maximum power level. Pressing the same key a series of times in rapid succession increases the time in 30 second intervals up to a maximum of 3 minutes.

## Memory key

This function is used to save a frequently-used cooking program (manual function only).

- 1 At the end of the cooking program, press and hold the M key for more than 5 seconds; the recently-completed function will be stored in the memory.
- 2 To recall the stored function, simply press the M key for less than 3 seconds.

## Timer function

- 1 Turn the bottom knob (SELECT – MANUAL FUNCTION) until selecting the TIMER function and confirm by pressing the same knob.
- 2 Select the cooking time by turning the bottom knob again, and press the START key.
- 3 During this function, the oven cannot be used for any type of cooking.