



# Quick Guide MW537P

**THANK YOU FOR CHOOSING OUR MICROWAVE OVEN**  
**FOR BEST RESULTS, PLEASE READ THE INSTRUCTION MANUAL BEFORE USING THE APPLIANCE.**

## PASTA FUNCTION

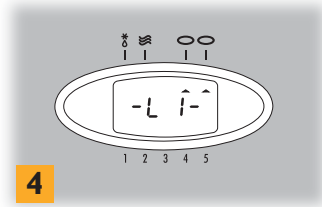
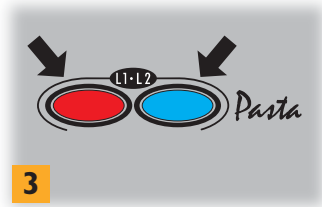
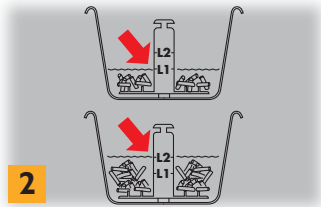
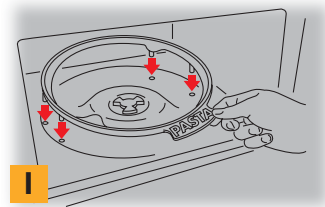
- 1** After removing the turntable and turntable support with wheels from the oven, place the pasta cooker support in the oven, inserting the four pins into the four holes in the bottom of the cavity.
- 2** Place the pasta in the pasta cooker and cover completely with water until it reaches one of the two levels indicated on the mixer. Add salt and cover with the lid.
- 3** Place the container in the oven and select the key corresponding to the water temperature (blue if the water added is cold, red if the water is hot), pressing it a number of times until the level of water
- 4** reached in the container (L1 or L2) is displayed.

reached in the container (L1 or L2) is displayed.

Select the cooking time for the pasta used (see pasta pack) by rotating the **TIME ADJUST** knob.

To start the function, press the **START** key.  
 At the end of cooking, drain the pasta.

**IMPORTANT:** you should read the instruction manual carefully for more detailed explanations on how to proceed.



## MICROWAVE FUNCTION

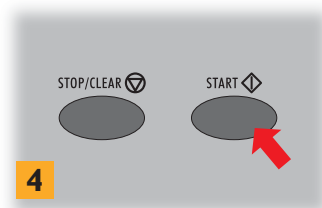
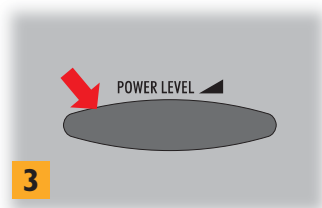
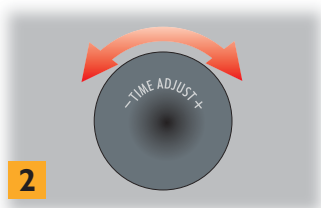
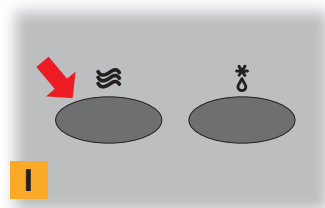
Prepare the food in a container suitable for microwave use and place it on the turntable. Close the oven door.

- 1** Press the key. 0:00 flashes on the display.
- 2** Select the cooking time by rotating the **TIME ADJUST** knob.

- 3** If necessary, modify the microwave power by repeatedly pressing the **POWER LEVEL** key.

- 4** Press the **START** key to start the function.

At the end of cooking, you will hear a beep and the word **END** will appear on the display.



## QUICK HEAT

Place the food to be heated inside the oven on the turntable and close the door.

Press the **+1 min** key. Pressing this key again in rapid sequence will increase the time in steps of 30" up to a maximum of 6 minutes.

Press the **START** key .

## AUTOMATIC DEFROSTING FUNCTION

Place the food to be defrosted directly on the turntable or in a container suitable for microwave use. Close the oven door.

Press the key. 0:00 flashes on the display.

Select the defrosting time by rotating the **TIME ADJUST** knob.

Press the **START** key.

At the end of defrosting, you will hear a beep and the word **END** will appear on the display.



Living innovation