

IMPORTANT SAFEGUARDS

- Use this appliance only as described in this instruction manual.
As with all electrical equipment, whilst the instructions aim to cover as many eventualities as possible, caution and common sense should be applied when operating and installing this appliance.
- This appliance is designed for home air conditioning and must not be used for other purposes.
- It is dangerous to modify or alter the characteristics of the appliance in any way.
- The appliance must be installed in conformity with national legislation regulating electrical equipment and installations.
- If the appliance requires repair, contact a Service Centre authorised by the manufacturer only. Repairs carried out by unauthorised personnel may be dangerous.
- This appliance must be used exclusively by adults.
- Never allow the appliance to be used by people (including children) with psychological, physical or sensory impairments or with insufficient experience and knowledge, unless closely supervised and instructed by someone responsible for their safety.
Young children should be supervised to ensure that they do not play with the appliance.
- The appliance must be connected to an efficient earth system.
Have your electrical circuit checked by a qualified electrician.
- Do not use extension cables.
- Before cleaning or maintenance, always unplug the appliance from the mains socket.
- Never unplug the appliance by pulling on the power cable.
- Do not install the appliance in rooms containing gas, oil or sulphur. Do not install near sources of heat.
- Keep the appliance at least 50 cm away from flammable substances (alcohol etc) or pressurised containers (eg aerosol cans).
- Do not rest heavy or hot objects on top of the appliance.
- Clean the air filter at least once a week.
- Avoid using heating appliances near the air conditioner.
- Always transport the appliance upright or resting on one side.
Before moving the appliance, empty the internal circuit completely of water.
After moving the appliance, wait at least 1 hour before starting it
- When putting the appliance away, do not cover with plastic bags.
- The materials used for packaging can be recycled.
You are therefore recommended to dispose of them in special differentiated waste collection containers.
- At the end of its working life, consign the appliance to a specialist collection centre.
- If the power cable is damaged, it must be replaced by the manufacturer or an authorised technical service centre in order to avoid all risk.
- Remember to descale the appliance at the end of every season and always after 500 hours of operation (see page 20).
In areas with particularly hard water, you are recommended to add special water softener obtainable from authorised service centres to the water.
- "These models shall be connected only to supply with the relevant system impedance no more than 0.187 ohm. Restrictions to connection may be imposed by the supply authority on the use of equipment if the actual system impedance at the interface point of the user's premise exceeds 0.187 ohm. If necessary please consult your energy supply authority."

SPECIFIC WARNINGS FOR APPLIANCES WITH R410A* REFRIGERANT GAS

R410A refrigerant gas conforms to EC regulations on the environment.

Avoid perforating the refrigerant circuit of the appliance.

ENVIRONMENTAL INFORMATION: This unit contains fluorinated greenhouse gases covered by the Kyoto Protocol.

Maintenance and disposal must be carried out by qualified personnel only (R410A, GWP=1975).

*** Verify the type of refrigerant gas used in your appliance on the rating plate.**

SPECIFIC WARNINGS FOR APPLIANCES WITH R290* REFRIGERANT GAS



READ THE MANUAL



CAUTION RISK OF FIRE

- Read the warnings carefully.
- When defrosting or cleaning, use only the implements recommended by the manufacturer.
- The appliance must be placed in a room without continuously operating sources of ignition (for example: open flames, an operating gas appliance or an operating electric heater).
- Do not pierce or burn.
- Refrigerant gas may be odourless.
- The appliance must be installed, used and stored in a room with a surface area greater than 15 m².
- This appliance contains about 300 g of R290 refrigerant gas.
- R290 refrigerant gas complies with European environmental directives. Do not perforate any of the components in the refrigerant circuit.
- If the appliance is installed, used or stored in an unventilated room, the room must be such as to prevent stagnation of possible leaks of refrigerant gas as there could be a danger of fire or explosion hazard should the refrigerant come into contact with electric heaters, stoves or other sources of ignition.
- The appliance must be stored in such a way as to prevent mechanical faults.
- Persons working on a refrigerant circuit must have the relative authorisation issued by an accredited body certifying their competence to handle refrigerants in compliance with a standard assessment recognised by sector associations.
- All repairs must be carried out in accordance with the manufacturer's recommendations. Maintenance and repairs requiring the assistance of other qualified personnel must be carried out under the supervision of specialists in the use of inflammable refrigerants.

* **Verify the type of refrigerant gas used in your appliance on the rating plate.**

IMPORTANT INFORMATION FOR CORRECT DISPOSAL OF THE PRODUCT



At the end of its working life, the product must not be disposed of as urban waste. It must be taken to a special local authority differentiated waste collection centre or to a dealer providing this service.

Disposing of a household appliance separately avoids possible negative consequences for the environment and health deriving from inappropriate disposal and enables the constituent materials to be recovered to obtain significant savings in energy and resources. As a reminder of the need to dispose of household appliances separately, the product is marked with a crossed-out wheeled dustbin.

ELECTRICAL CONNECTIONS

Before plugging the appliance into the mains socket, check that:

- the mains power supply corresponds to the value indicated on the rating plate on the back of the appliance;
- the power socket and electrical circuit are adequate for the appliance.
- the mains socket matches the plug. If this is not the case, have the plug replaced;
- the mains socket is adequately earthed. **Failure to follow these important safety instructions absolves the manufacturer of all liability.**

WHAT IS THE WATER-AIR PINGUINO

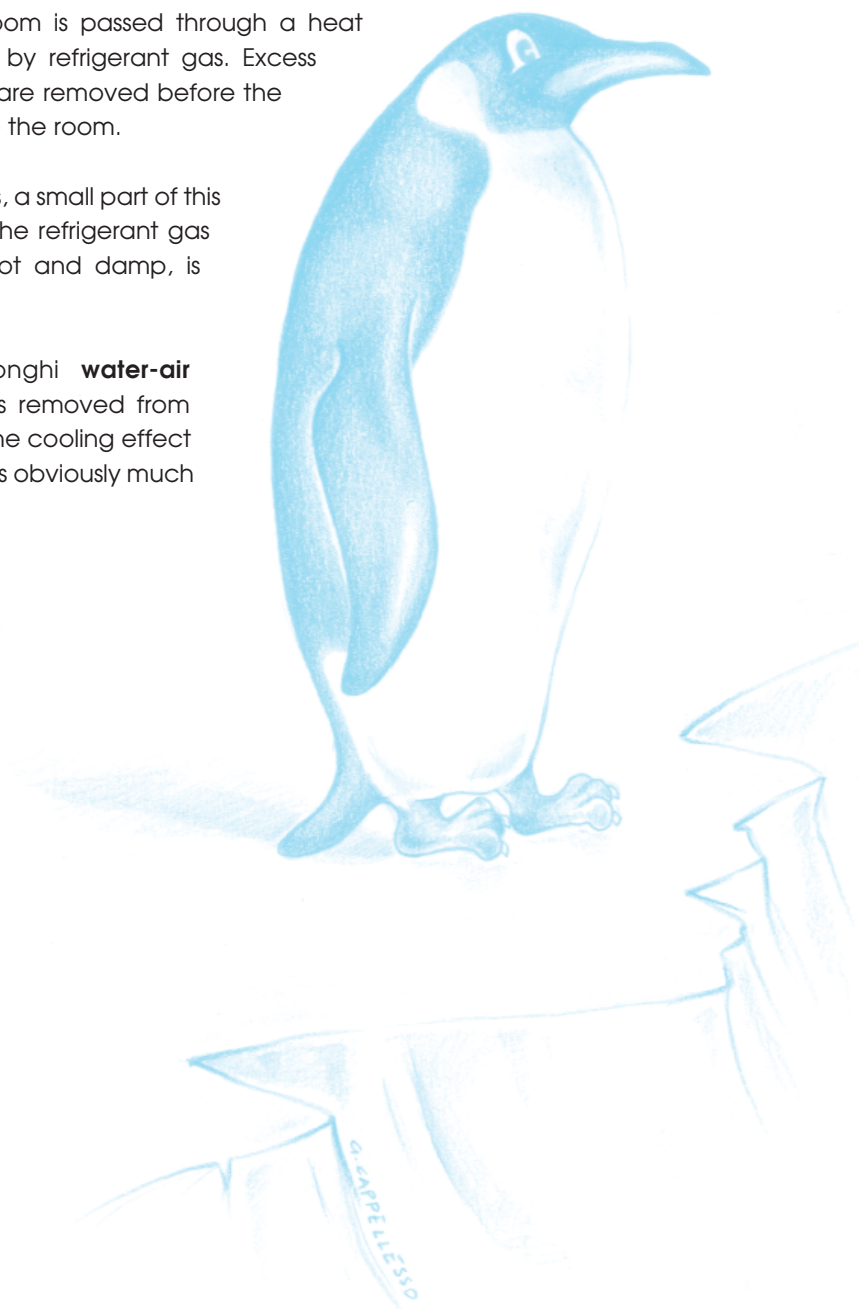
During the summer, you feel comfortable at a temperature of between 24 and 27° C with a relative humidity of about 50%.

An air conditioner removes excess moisture and heat from the room where it is located. Compared with installed models, portable air conditioners have the advantage that they can be moved from one room to another in the home or be transported from one building to another.

Hot air from the room is passed through a heat exchanger cooled by refrigerant gas. Excess heat and moisture are removed before the air is re-emitted into the room.

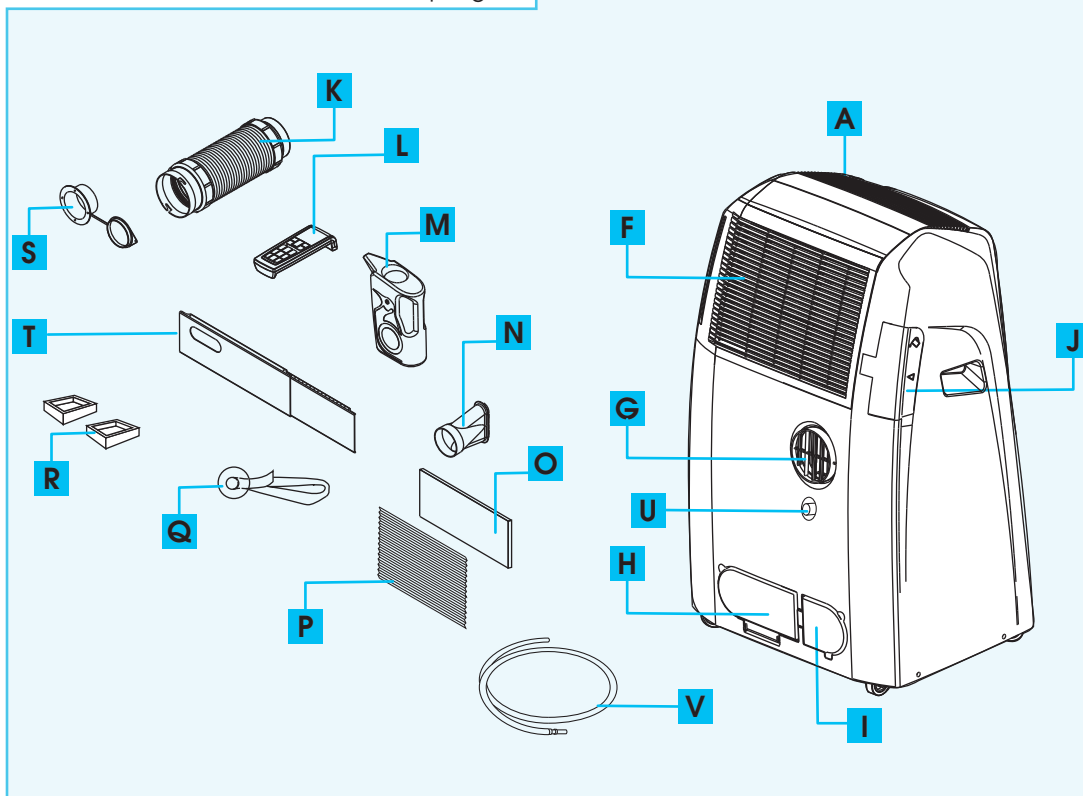
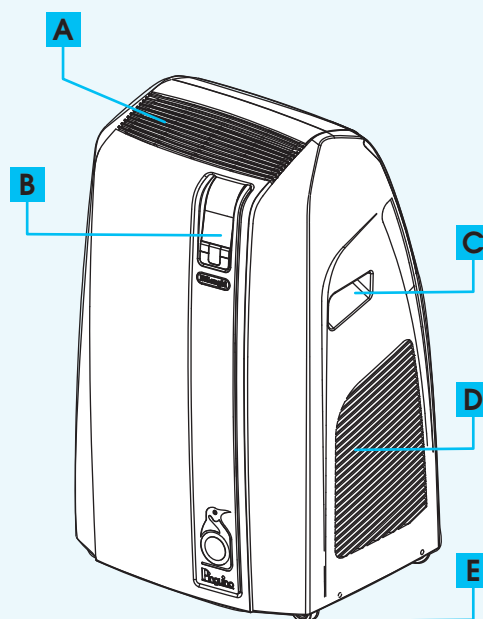
In single unit models, a small part of this air is used to cool the refrigerant gas and then, when hot and damp, is discharged outside.

In exclusive De'longhi **water-air models**, the heat is removed from the room through the cooling effect of the water which is obviously much greater than air.



DESCRIPTION

- A** Air outlet grille
- B** Control panel with advanced LCD display
- C** Handle
- D** Grille
- E** Castors
- F** Air intake grille with dust filter
- G** Air exhaust hose compartment
- H** Water drainage hose door
- I** Power cable compartment door
- J** Water fill door
- K** Air exhaust hose
- L** Remote control
- M** Filling jug
- N** Window outlet
- O** Silver ion filter (certain models only)
- P** 3M filter (certain models only)
- Q** Sucker
- R** Castor locks
- S** Flange with cap
- T** Adjustable bar
- U** Condensate drain connector
- V** Condensate drain hose with coupling



PREPARING FOR USE

The instructions below will enable you to prepare your air conditioner for operation as efficiently as possible.

Before use, make sure the air intake and outlet grilles are unobstructed.

AIR-CONDITIONING WITHOUT INSTALLATION

Just a few simple steps and your comfort is ensured with your appliance:

- Fit the air exhaust hose in the housing at the back of the appliance (fig. 1).
- Fit the window outlet to the end of the hose.
- Place the air conditioner near a window or French window.
- Adjust the length of the hose to reach the window.
- Make sure the air exhaust hose is unobstructed.
- Open the window or French window slightly and position the outlet (fig. 2).
- If you have a double window, use the sucker provided to hold the two parts of the window together (fig. 3).

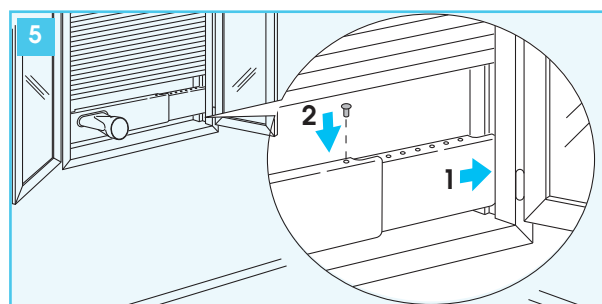
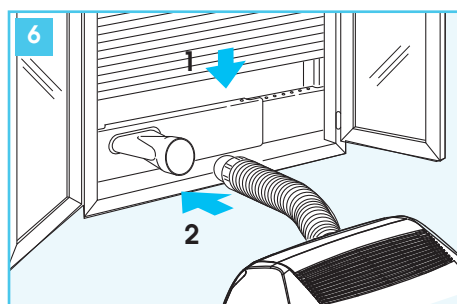
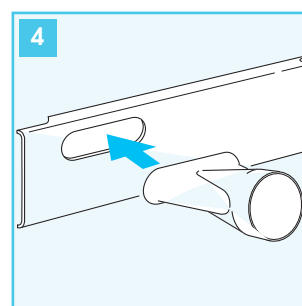
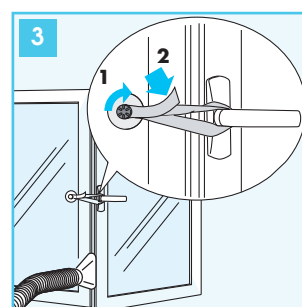
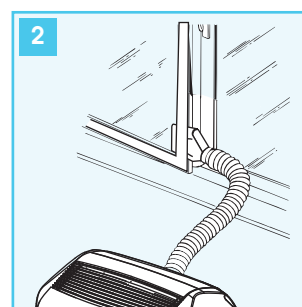
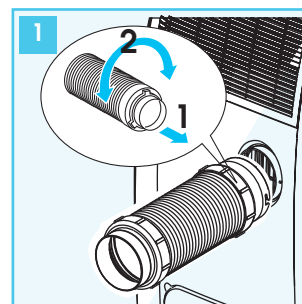
You can also use the "adjustable bar" accessory.

- Fit the window outlet in the housing in the bar (fig. 4).
- Position the bar on the window sill and adjust until it fits in the guides of the blind (the length can be blocked with the plastic pin provided), then lower the blind (fig. 5).
- Fit the air hose to the end of the window outlet.
- Place the air conditioner near a window or French window and connect the end of the hose as shown in figure 6.

Keep the air hose as short and free of curves as possible to avoid bottlenecks.

To use the appliance in heating or smart mode, the condensate drain hose must be attached as follows:

- Fit the hose with the rapid coupling as shown in fig. 7.
- In order for the continuous drain function to operate correctly, make sure the hose coupling is fully inserted into the connector. To remove, press the connector flange.



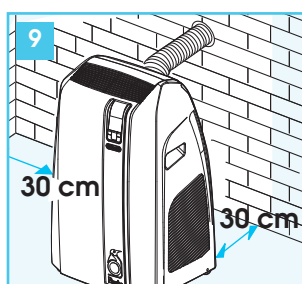
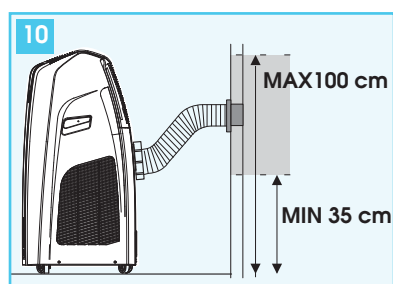
Place the end of the hose in a suitable container (for example, 5 litres) which must be emptied regularly. Alternatively place it outside the window (max. height 1 m) (fig. 8).

AIR-CONDITIONING WITH INSTALLATION

If required, your appliance can also be installed semi-permanently (Fig. 9).

Proceed as follows:

- Drill a 106 mm dia. hole in the wall respecting the heights shown in fig. 10 and following the indications in figs. 11, 12 and 13.



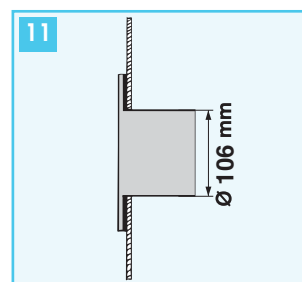
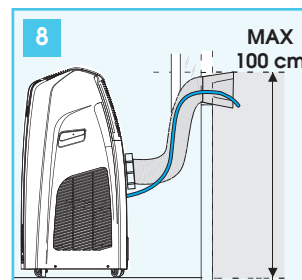
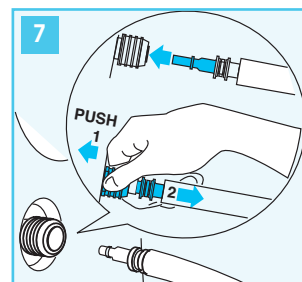
- Fit the flange accessory provided in the hole
- Fit the hose in the housing at the back of the appliance (fig. 1).
- Fit the end of the hose to the flange as shown in fig. 10. When the hose is not fitted, the hole can be closed with the flange cap.

Keep the air hose as short and free of curves as possible to avoid bottlenecks.

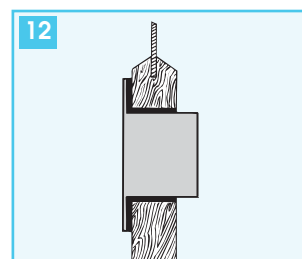
- ✓ When installing the air conditioner semi-permanently, you should leave a door slightly open (as little as 1 cm) to guarantee correct ventilation.

To use the appliance in heating or smart mode, the condensate drain hose must be attached as follows:

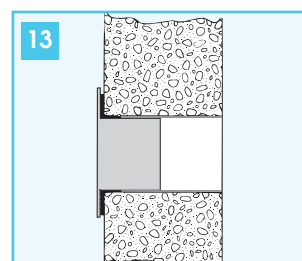
- Fit the hose with the rapid coupling as shown in fig. 7.
- In order for the continuous drain function to operate correctly, make sure the hose coupling is fully inserted into the connector. To remove, press the connector flange. Place the other end of the hose in a suitable container (for example, 5 litres) which must be emptied regularly, (max. height 1 m).



in the window pane



in the wooden kickboard of a French window




in the wall: you are recommended to insulate the section of wall using suitable insulation.

PREPARING FOR OPERATION IN WATER MODE

Once the appliance has been installed following the instructions above, it is ready for use. However, its efficiency can be enhanced by operating it in the exclusive De'longhi **water mode**. The water in the tank increases the cooling power of your Pinguino and at the same time reduces noise levels and electrical consumption. Compared to air, water reduces the temperature of the cooling circuit much more efficiently, before being given off from the air exhaust hose in the form of vapour.

Remember that:

- You must always use salt-free **clean mains water**.
- The length of time the water in the tank lasts depends greatly on environmental conditions such as temperature, humidity, insulation, the exposure of the room, the number of people present, etc. Indicatively it lasts about six hours. By using the WATERSAVE function (see page 34), the length of time can be extended to 10 hours, with a slightly lower cooling power and efficiency.
- When the water in the tank runs out, the  light comes on and operation of the appliance switches automatically to air-air. At the same time, the quantity of air given out from the rear hose increases.

FILLING THE TANK

You can fill the tank in one of two ways:

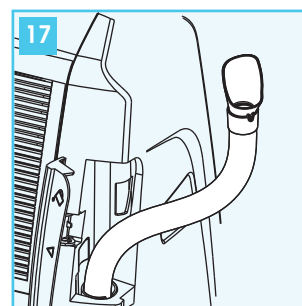
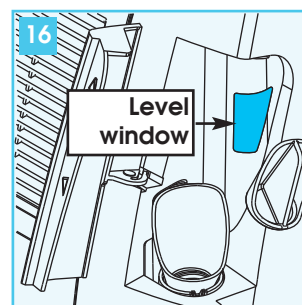
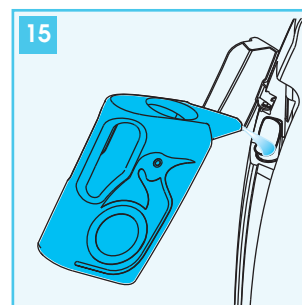
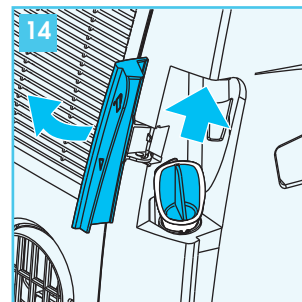
1) By using the jug provided or another recipient:

Instead of the jug provided, you can use any recipient (plastic or glass bottle, watering can etc), providing you avoid the water spilling.

- Without using force, open the rear door completely, then remove the rubber cap (fig. 14).
- Pour the water into the tank (fig. 15). When the tank is full, the water level window (fig. 16) becomes completely red. Indicatively, you will need to refill the jug three times to fill the tank completely.
- After filling, put the rubber cap back in place, then close the door.

2) Using the extendible hose:

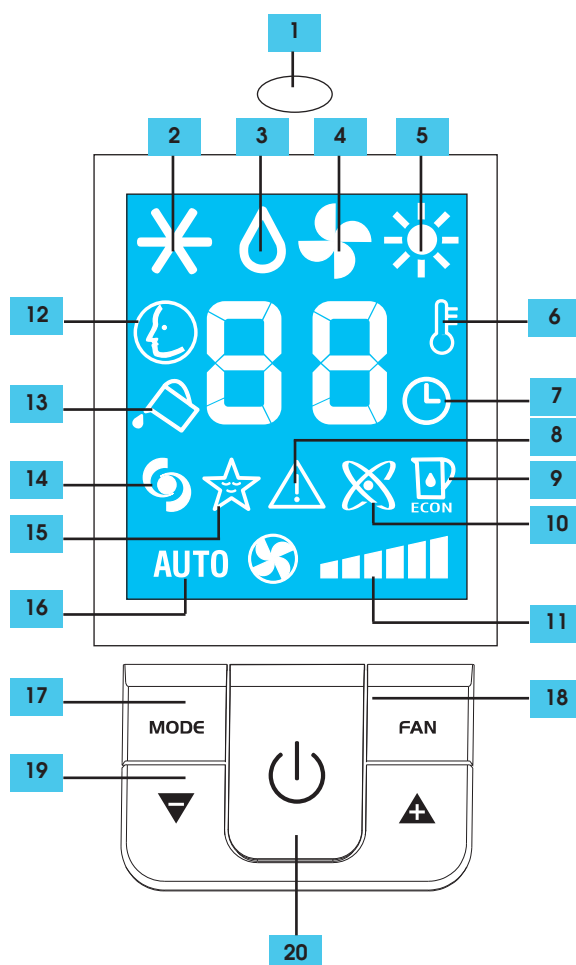
- Without using force, open the rear door completely, then remove the rubber cap (fig. 14). Pull out the extendible hose (fig. 17) and place near a tap.
- Fill the tank to the required level.
- When the tank is full, the water level window (fig. 16) becomes completely red (about 14 l).
- After filling, put the rubber cap back in place, then close the door.



- ✓ The tank does not have to be full to use the water function, but the length of time the appliance will operate in water mode will be shorter.
- ✓ When the level window has become completely red, do not add further water or it could overflow. **The tank has no overflow prevention system.**

DESCRIPTION OF THE CONTROL PANEL WITH ADVANCED LCD DISPLAY


- 1 Signal receiver
- 2 Air conditioning symbol
- 3 Dehumidifying symbol
- 4 Fan symbol
- 5 Heating symbol (certain models only)
- 6 Temperature indicator
- 7 Timer symbol
- 8 Alarm symbol
- 9 WATERSAVE symbol
- 10 Ioniser symbol (certain models only)
- 11 Speed indicator
- 12 SMART symbol
- 13 "No water" symbol
- 14 BOOST symbol
- 15 SLEEP symbol
- 16 AUTOFAN indicator
- 17 MODE button (selects the modes)
- 18 FAN button
- 19 Increase (+) and decrease (-) temperature button
- 20 ON/Standby button

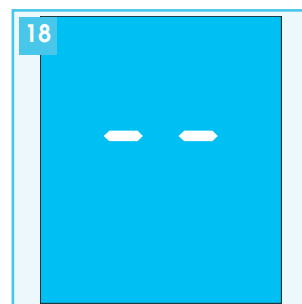


OPERATING FROM THE CONTROL PANEL

The control panel enables you to manage all the main functions of the appliance, but to fully exploit its potential, you must use the remote control unit.

TURNING THE APPLIANCE ON

- Plug into the mains socket.
Two lines appear on the display indicating that the appliance is in standby (fig. 18).
- Press the  button until the appliance comes on. The last function active when it was turned off will appear.



✓ Never turn the air conditioner off by unplugging from the mains. Always press the  button, then wait for a few minutes before unplugging. This allows the appliance to perform a cycle of checks to verify operation.



AIR CONDITIONING MODE (FIG. 19)

Ideal for hot muggy weather when you need to cool and dehumidify the room.

Always make sure the water fill door is completely closed before setting this mode.

To set this mode correctly:

- Press the **MODE** button a number of times until the air-conditioning symbol appears.
- Select the target temperature by pressing the ▲ or ▼ button until the corresponding value is displayed.
- Select the required fan speed by pressing the **FAN** button.

Four speeds are available:



Maximum speed: to achieve the target temperature as rapidly as possible



Medium speed: reduces noise levels but still maintains a good level of comfort

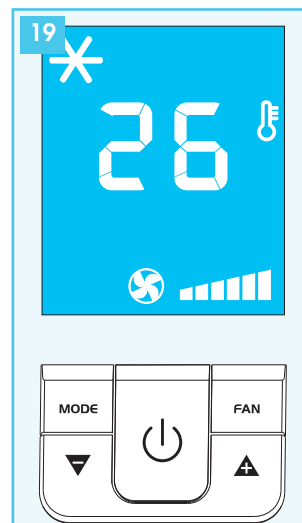


Low speed: for silent operation



AUTOFAN: the appliance automatically selects the most suitable fan speed in relation to the temperature set on the digital display.

The most suitable temperature for the room during the summer varies from 24 to 27°C. You are recommended, however, not to set a temperature much below the outdoor temperature.



DEHUMIDIFYING MODE (FIG. 20)

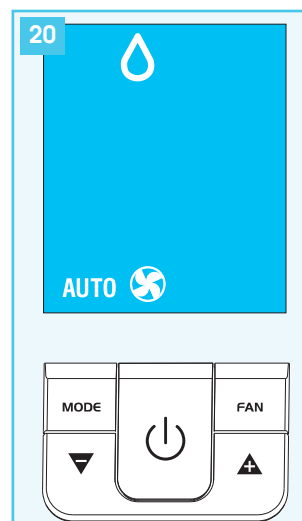
Ideal to reduce room humidity (spring and autumn, damp rooms, rainy periods, etc).

In dehumidifying mode, the appliance should be prepared in the same way as for air conditioning, with the air exhaust hose attached to enable the moisture to be discharged outside.

To set this mode correctly:

- Press the **MODE** button a number of times until the dehumidifying symbol appears.

In this mode, fan speed is selected automatically by the appliance and cannot be set manually.





FAN MODE (FIG. 21)

When using the appliance in this mode, the air hose does not need to be attached.

To set this mode correctly:

- Press the **MODE** button a number of times until the fan symbol appears.
- Select the required fan speed by pressing the **FAN** button. Three speeds are available:



Maximum speed: for maximum fan power



Medium speed: reduces noise levels but still maintains effective fan operation.



Low speed: for silent operation

In this mode, AUTO speed cannot be selected.



HEATING MODE (FIG. 22)

CERTAIN MODELS ONLY

This is ideal in spring and autumn when outdoor temperatures are not particularly severe.

When using the appliance in this mode, the air hose does not need to be attached.

In heating mode, as well as fitting the air exhaust hose, you must also attach the condensate drain hose to drain the water removed from the room (see the section: "Preparing for use").

To set this mode correctly:

- Press the **MODE** button a number of times until the heating symbol appears.
- Select the target temperature by pressing the **▲** or **▼** button until the corresponding value is displayed.

In this mode, fan speed is selected automatically by the appliance and cannot be set manually.

N.B. -When operating in very cold rooms, the appliance defreezes automatically, momentarily interrupting normal operation. " **L E** " appears on the display. During this operation, it is normal for the noise made by the appliance to change.

- In this mode, you may have to wait a few minutes before the appliance starts giving out hot air.

- In this mode, the fan may operate for short periods, even though the set temperature has already been reached.



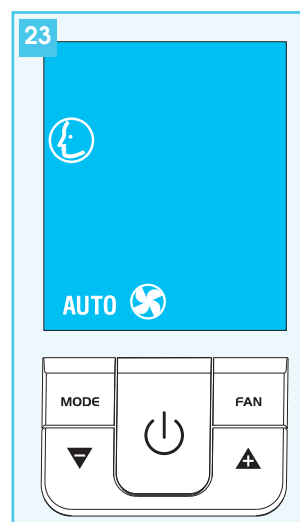
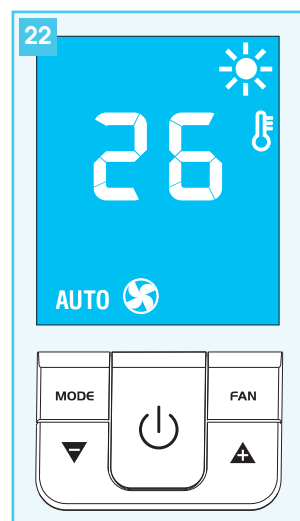
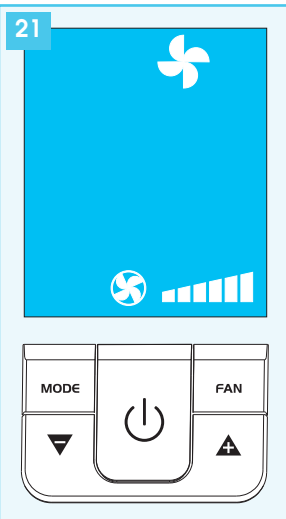
SMART MODE (FIG. 23)

The appliance chooses automatically whether to operate in air conditioning, fan or heating (certain models only) mode.

To set this mode:

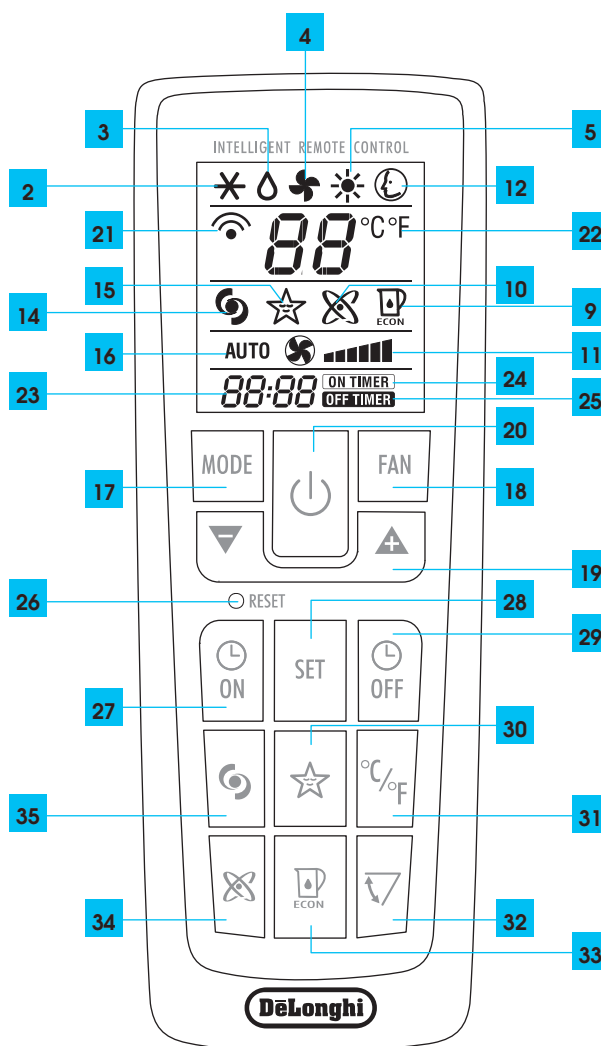
- Press the **MODE** button a number of times until the SMART symbol appears.
- Select the required fan speed. For safety reasons, when the appliance is operating in heating mode, the fan speed could differ from the set speed.

N.B.: in SMART mode, you should always fit the condensate drain hose as the appliance may also operate in heating mode.



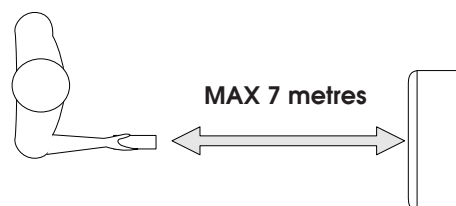
DESCRIPTION OF THE REMOTE CONTROL

- 2 Air conditioning symbol
- 3 Dehumidifying symbol
- 4 Fan symbol
- 5 Heating symbol (certain models only)
- 9 WATERSAVE symbol
- 10 Ioniser symbol (certain models only)
- 11 Fan speed indicator
- 12 SMART symbol
- 14 BOOST symbol
- 15 SLEEP symbol
- 16 AUTOFAN indicator
- 17 MODE button (selects the modes)
- 18 FAN button
- 19 Increase (+) and decrease (-) temperature button
- 20 ON/Standby button
- 21 Signal transmission
- 22 Selected temperature scale indicator
- 23 Clock
- 24 Timer ON symbol
- 25 Timer OFF symbol
- 26 Reset button (resets the appliance to the original settings)
- 27 Timer ON button
- 28 SET button
- 29 Timer OFF button
- 30 SLEEP button
- 31 °C or °F selection button
- 32 Swing button (function not available in these models)
- 33 WATERSAVE button
- 34 Ioniser button (certain models only)
- 35 BOOST button



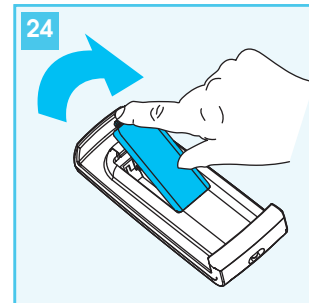
USING THE REMOTE CONTROL

- ✓ Point the remote control at the receiver on the appliance. The remote control must be no more than 7 metres away from the appliance (without obstacles between the remote control and the receiver).
- ✓ The remote control must be handled with **extreme care**. Do not drop it or expose it to direct sunlight or sources of heat.



INSERTING OR REPLACING THE BATTERIES

- Remove the cover on the rear of the remote control (fig. 24);
 - Insert two R03 "AAA" 1.5V batteries, making sure they are in the correct position (see the instructions inside the battery compartment);
 - Replace the cover.
- ✓ If the remote control unit is replaced or discarded, the batteries must be removed and disposed of in accordance with current legislation as they are harmful to the environment.



SETTING THE TIME

After having inserted the batteries, the clock on the display flashes until the time is set. Proceed as follows.

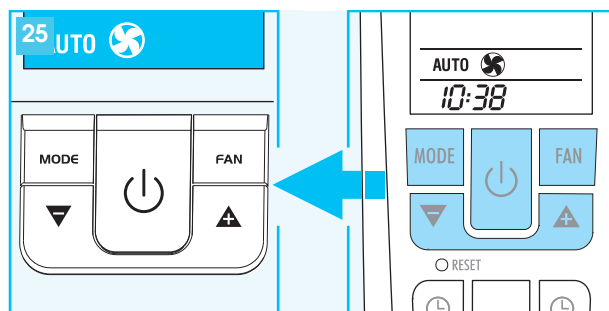
- Press the ▲ or ▼ button until the correct time is reached. Hold the button down to run rapidly through first the minutes, then the tens of minutes.
- Once the correct time has been reached, release the button and press the **SET** button to confirm.
- To cancel the settings programmed on the remote control and restore the original settings, press the **RESET** button lightly with the point of a pencil or pen.

USING THE REMOTE CONTROL UNIT

The first part of the controls on the remote control are the same as those on the control panel of the appliance (fig. 25).

You should therefore refer to the instructions in the chapter Operating the appliance from the control panel to:

- turn the appliance on
- select the operating mode (**AIR CONDITIONING, DEHUMIDIFYING, FAN, HEATING** or **SMART**) and the fan speed.
- set the required temperature



The following section describes the additional functions corresponding to the controls on the bottom part of the remote control.

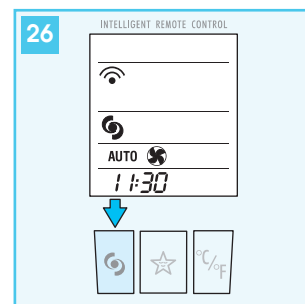


BOOST FUNCTION (FIG. 26)

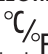
Ideal for the summer to cool rooms rapidly.

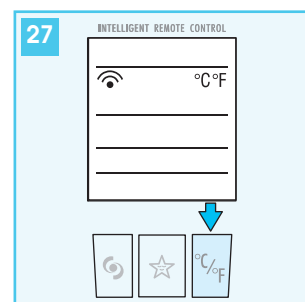
Activate by simply pressing the  button.

The appliance operates in air conditioning mode at maximum fan speed. While this function is selected, it is not possible to set the temperature or change fan speed.



SELECTING THE TEMPERATURE SCALE (FIG. 27)

Press the  button to switch the temperature display from °C to °F and vice versa.





SLEEP FUNCTION (FIG. 28)

This function is useful for the night as it gradually reduces operation of the appliance and turns it off after 8 hours.

To set this function correctly:

- Select the operating mode (air conditioning, dehumidifying, smart or heating (certain models only) as described above.
- Press the ★ button. The appliance operates in the previously selected mode with the lowest possible fan speed.

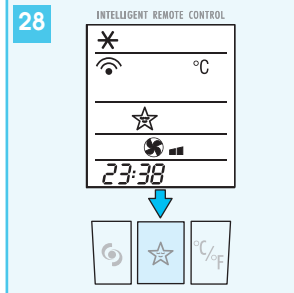
The SLEEP function maintains the room at optimum temperature without excessive fluctuations in either temperature or humidity and with silent operation.

Fan speed, room temperature and humidity vary gradually to ensure the most comfortable conditions.

During air conditioning, the temperature increases by 1°C after 60 minutes and a further 1°C after 2 hours.

In dehumidifying mode, the dehumidifying power of the appliance is partially reduced every hour for the first two hours.

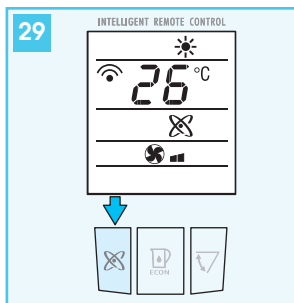
In heating mode, the temperature drops by 1°C every hour, three times.



IONISER FUNCTION (CERTAIN MODELS ONLY) (FIG. 29)

The ioniser is an electronic component which releases negative ions into the air. Rooms with a clean pleasant atmosphere have been shown to have an abundance of negative ions, while rooms with stale air contain abundant positive ions.

The ioniser restores the correct balance between the two types of ion, reducing dust in the air and generating a pleasant sensation of well-being. This button activates the ioniser present in certain models. This function can be activated in all operating modes.



WATERSAVE FUNCTION (FIG. 30)

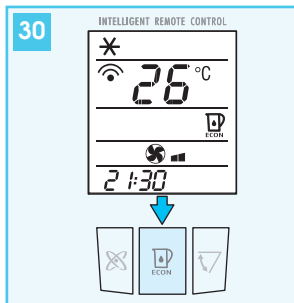
This function is designed to increase the operating time of the appliance when operating in water mode and can be activated in air conditioning and SMART mode.

When the button is pressed, the appliance is slightly less efficient, but consumption of water in the tank is considerably reduced.

With a full tank, the appliance normally operates for six hours.

With this function activated, the operating time increases to 10 hours, avoiding the need to top up frequently.

When the water runs out, the 💧 light comes on and the quantity of air coming out of the hose at the back increases. To restore operation in water mode, fill the tank.







SWING FUNCTION

Not available in these models.





PROGRAMMIN THE TIMER

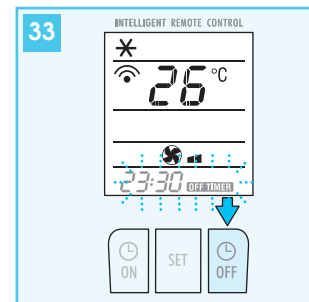
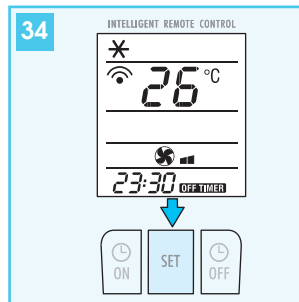
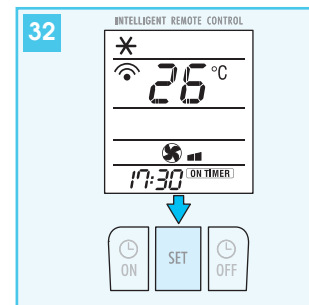
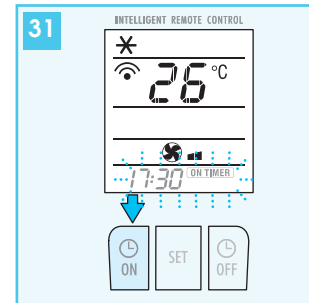
The appliance can be programmed to start up and shut down when required.

Programming start up

- Press the  **ON** button.
The start-up time and message "ON TIMER" flash on the remote control display (fig. 31).
- Press the  or  buttons to set the time you want the appliance to start up.
- When that time is reached, press the **SET** button to confirm (fig. 32). The message "ON TIMER" appears on the remote control display and the  symbol is displayed on the appliance to indicate that the timer is active.






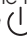
Programming shutdown

- Press the  **OFF** button. The shutdown time and message "OFF TIMER" flash on the remote control display (fig. 33).
- Press the  or  buttons to set the time you want the appliance to shut down.
- When that time is reached, press the **SET** button to confirm (fig. 34). The message "OFF TIMER" appears on the remote control display and the  symbol is displayed on the appliance to indicate that the timer is active.



SELF-DIAGNOSIS

The appliance has a self diagnosis system to identify a number of malfunctions. Error messages are displayed on the appliance display.

IF...IS DISPLAYED,	WHAT SHOULD I DO?	IF...IS DISPLAYED,	WHAT SHOULD I DO?
 LOW TEMPERATURE (frost prevention)	The appliance is fitted with a frost protection device to avoid excessive formation of ice. The appliance starts up again automatically when the defrosting process is completed.	 HIGH LEVEL (tank full)	Empty the internal safety tank, following the instructions in the "End of season operations" paragraph. If this reoccurs, contact your local authorised service centre. In heating mode, attach the condensate drain hose.
 PROBE FAILURE (sensor damaged)	If this is displayed, contact your local authorised service centre.	 CLEAN	This message appears after about 500 hours of operation in water mode and indicates that the appliance requires descaling as described in the "descaling" paragraph.
 FAILURE1 (pump failure)	This message could appear in heating mode if the condensate drain hose is not attached or is blocked. Attach the hose or remove the obstruction.	After descaling or if the alarm reappears too soon after the last descaling (carried out before the message is displayed), reset the alarm by holding the  button down for 10 seconds.	

TIPS FOR CORRECT USE

To get the best from your air conditioner, follow these recommendations:

- close the windows and doors in the room to be air conditioned (fig. 35). When installing the air conditioner semi-permanently, you should leave a door slightly open (as little as 1 cm) to guarantee correct ventilation.
- protect the room from direct exposure to the sun by partially closing curtains and/or blinds to make the appliance much more economical to run (fig. 36);
- never rest objects of any kind on the air conditioner;
- do not obstruct the air intake and outlet (fig. 37). Leave both grilles free;
- make sure there are no heat sources in the room.
- never use the appliance in very damp rooms (laundries for example).
- never use the appliance outdoors.
- make sure the air conditioner is standing on a level surface. If necessary, place the castor locks under the front wheels.

AIR PURIFYING FILTERS

The appliance is fitted with a dust filter which retains impurities in the air drawn in from the room.

Certain models also include other filters with a high filtering capacity, namely a silver ion filter and a 3M® electrostatic filter.

SILVER ION FILTER

The silver ion filter not just retains dust particles, but also has an efficient antibacterial action. It also greatly reduces concentrations of irritants such as pollen and spores.

The filter is treated with small particles of silver (on the scale of millionths of a millimetre) which are able to block the multiplication of and kill any nearby bacteria or spores.

3M® ELECTROSTATIC FILTER

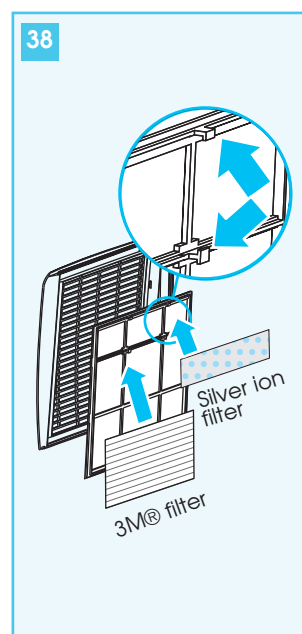
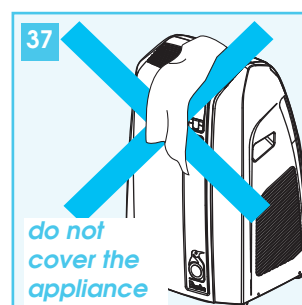
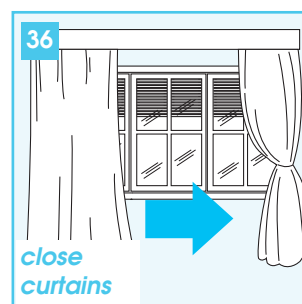
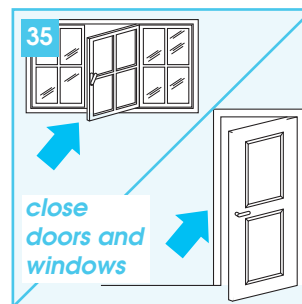
The 3M® electrostatic filter retains the finest dust particles, thus enhancing the filtering capacity of the appliance.

FITTING THE FILTERS TO THE GRILLE


The appliance can be used with just the dust filter already inserted in the grille.

To use the two supplementary filters (if provided with your model), remove them from the packaging and attach them to the dust filter, inserting them under the special clips (fig. 38).

If you decide not to use them, keep them sealed in the packaging.



CLEANING

Before cleaning or maintenance, turn the appliance off by pressing the  button on the control panel or remote control, wait for a few seconds then unplug from the mains socket.

CLEANING THE CABINET

You should clean the appliance with a slightly damp cloth then dry with a dry cloth.

- ✓ Never wash the air conditioner with water. It could be dangerous.
- ✓ Never use petrol, alcohol or solvents to clean the appliance. Never spray insecticide liquids or similar.

CLEANING THE AIR FILTERS

To keep your air conditioner working efficiently, you should clean the dust filters every week of operation.

Dust filter supplied with all models

The filter is housed in the intake grille.

To clean the filters, proceed as follows:

- Remove the intake grille by pulling it outwards (fig. 39).
- Remove the dust filter by detaching it from the grille (Fig. 40).
- Use a vacuum cleaner to remove the dust collected on the filter. If it is very dirty, immerse in warm water and rinse a number of times. The water should never be hotter than 40°C.
- After washing, leave the filter to dry completely.
- To replace, put the filters back in the intake grille then attach the intake grille to the appliance.

Silver ion filter and 3M® electrostatic filter (certain models only)

These two filters are located behind the dust filter.

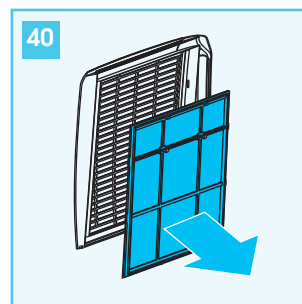
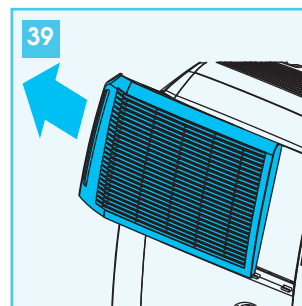
To clean the dust filter, the two supplementary filters must be temporarily removed.

To clean, use a vacuum cleaner at medium power.

The silver ion filter **can be washed** with cold water. Leave to dry completely and replace. It should be replaced at least once every two seasons.

The 3M® filter **is not washable** and must be replaced at the end of the season or when it is exhausted and no longer efficient.

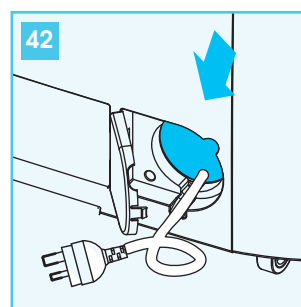
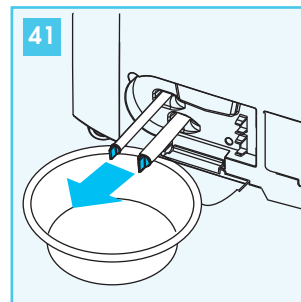
- ✓ The silver ion filter and 3M® filter can be bought from shops selling De'longhi accessories or authorised service centres.



OPERATIONS AT END OF SEASON (OR BEFORE TRANSPORTING THE APPLIANCE)

Before putting the appliance away, you are recommended to perform the descaling procedure described in the "Descaling" section.

- Before putting the appliance away or moving it to another location, you must empty any water left in the tanks as described in the "Forced draining" section.
- Then empty any water left in the internal circuits by extracting and opening the two hoses inside the rear door (fig. 41).
- After performing the two operations described above, operate the appliance in fan only mode for about half an hour. This dries any water remaining inside the appliance.
- Turn the appliance off and unplug from the mains.
- Remove the air exhaust hose and condensate drain hose.
- Clean the dust filters and (in certain models) the air purifying filters.
- Place the power cable in the special rear cable compartment (fig. 42).
- Cover the appliance to avoid dust.



FORCED DRAINING

If you need to completely empty the appliance of water (for example, to move it to another location or put it away at the end of the season), you must follow the forced draining procedure.

Proceed as follows:

- Attach the continuous drain hose and make sure it drains into a suitable container or drain (max. height 1 m).
- Plug the appliance into the mains and set the appliance to stand-by.
- Press and hold the ON/STAND-BY and MODE buttons for about 6-7 seconds.


A beep indicates that the automatic procedure has begun and a graphic sequence is displayed.




Wait for the procedure to end.

- The appliance resets to stand-by.

Depending on the quantity of water to be drained, this process could last more than an hour.

DESCALING

When using the appliance in water mode, lime scale will inevitably form and must be removed to maintain efficiency. After about 500 hours of operation, the appliance therefore warns that descaling is required by displaying the message  **CL** (CLEAN). Descal the appliance.

- Turn off the appliance and unplug from the mains. Empty all water from the inside of the appliance through the drain hoses (fig. 42).
- Close and replace the drain hoses. Pour 0.5 l of descaler (one bottle) and 1.5 l of clean water into the tank.
- Plug in and operate the appliance in air conditioning mode with the BOOST function selected until the  "no water" symbol appears on the display.
- Turn off the appliance and unplug from the mains. Empty all water from the inside of the appliance through the drain hoses.
- Close and replace the drain hoses. Pour 2 l of clean water into the tank and rinse the internal circuits of dirt and descaler.
- Plug in and operate the appliance until the  "no water" symbol appears on the display.
- Turn off the appliance and unplug from the mains. Empty all rinsing water from the inside of the appliance through the drain hoses.
- If the water drained off is very dirty or contains large quantities of foam, repeat the rinsing operation.
- Close the drain hoses and replace.
- After descaling, reset the alarm by pressing the  button for 10 seconds.

✓ If you think there may be a large amount of water left in the tank, before descaling, perform the "forced draining" procedure.

TECHNICAL CHARACTERISTICS:

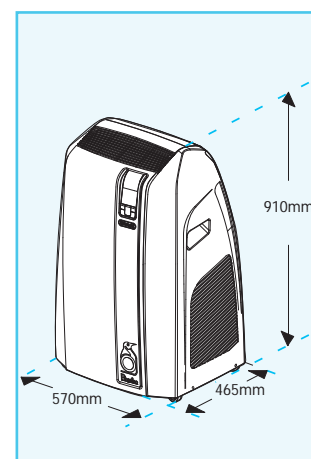
Power supply voltage	see rating plate
Max. power input during air conditioning	"
Absorbed power heating (certain models only)	"
Refrigerant	"
Cooling capacity	"

LIMIT CONDITIONS


Room temperature for air conditioning	21 ÷ 35°C
Room temperature for heating	10 ÷ 27°C

GUARANTEE AND TECHNICAL ASSISTANCE

The conditions of the guarantee and technical assistance are given on the certificate supplied with your appliance.



TROUBLESHOOTING

PROBLEM	CAUSE	SOLUTION
The air conditioner does not come on	<ul style="list-style-type: none"> • there is no current • it is not plugged into the mains • the internal safety device has tripped 	<ul style="list-style-type: none"> • wait • plug into the mains • call the Service Centre
The air conditioner works for a short time only	<ul style="list-style-type: none"> • there are bends or kinks in the air exhaust hose • something is preventing the air from being discharged 	<ul style="list-style-type: none"> • position the air hose correctly, keeping it as short and free of curves as possible to avoid bottlenecks. • check and remove any obstacles obstructing air discharge
The air conditioner works, but does not cool the room	<ul style="list-style-type: none"> • windows, doors and/or curtains open • there are heat sources in the room (oven, hairdryer, etc) • the air exhaust hose is detached from the appliance • dust filter and (when present) silver ion filter and 3M® filter clogged • the technical specification of the appliance is not adequate for the room in which it is located. 	<ul style="list-style-type: none"> • close doors, windows and curtains, bearing in mind the "tips for correct use" given above • eliminate the heat sources • fit the air exhaust hose in the housing at the back of the appliance (fig. 1). • clean the filters as described above
During operation, there is an unpleasant smell in the room	<ul style="list-style-type: none"> • dust filter and (when present) silver ion filter and 3M® filter clogged 	<ul style="list-style-type: none"> • clean the filters as described above
The air conditioner does not operate for about three minutes after restarting it	<ul style="list-style-type: none"> • the internal compressor safety device prevents the appliance from being restarted until three minutes have elapsed since it was last turned off. 	<ul style="list-style-type: none"> • wait. This delay is part of normal operation.
The symbol  and one of the following messages appears on the appliance display: LT / PF / HL / CL	<ul style="list-style-type: none"> • The appliance has a self diagnosis system to identify a number of malfunctions. 	<ul style="list-style-type: none"> • see the SELF-DIAGNOSIS chapter.