

## SOME NOTIONS ON HUMIDITY

Air always contains a certain amount of water in the form of vapour. This determines the level of humidity in an atmosphere.

The capacity of the air to hold water vapour increases with temperature.

This is why in our homes, as soon as the temperature decreases, the vapour contained in the air condenses, as is evident on the colder surfaces in the room, such as the windows, walls etc.

The purpose of a dehumidifier is to remove the excess moisture from the air, avoiding the damage caused by condensation.

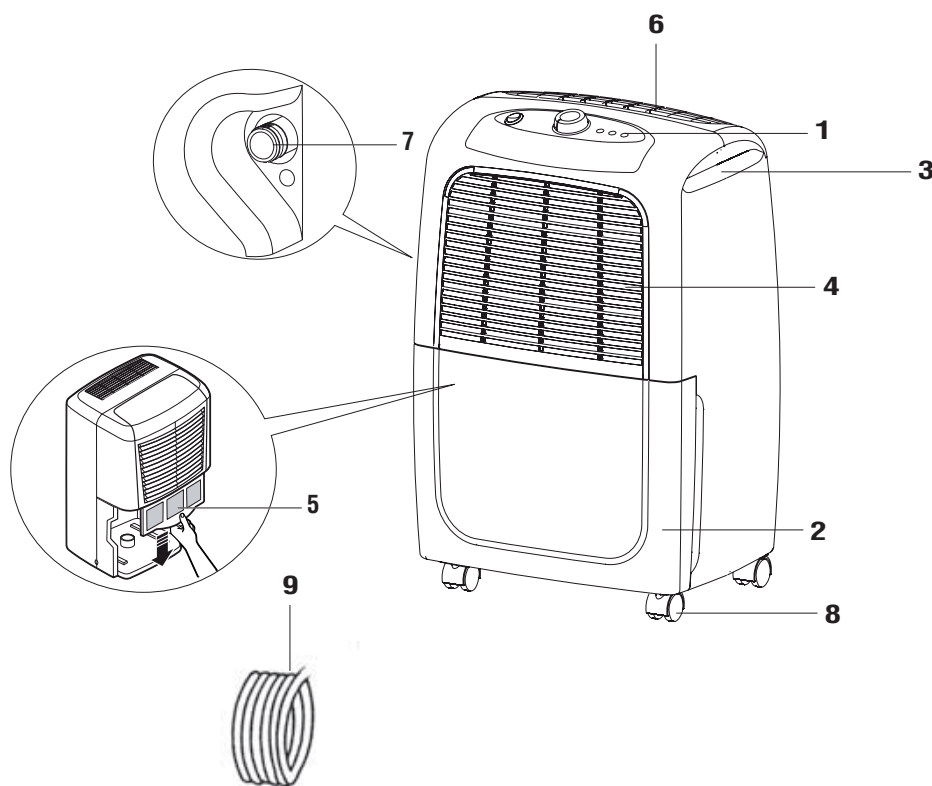
Experts have established that the optimum environmental conditions for our well being and for the home are obtained between 40% and 60% relative humidity. Lower relative humidity can be achieved with higher room temperatures. For lower room temperatures the achievable relative humidity will be on the higher side, closer to 60%. Therefore, with lower room temperatures, you are recommended to heat the room even minimally.

This considerably increases the dehumidifying power of the appliance.

With heating, the condensation formed by the water vapour on windows and other cold surfaces evaporates into the air to be collected by the dehumidifier.

## DESCRIPTION/ACCESSORIES

1. Control panel
2. Condensate collection tank
3. Handles
4. Air intake grille
5. Dust filter
6. Air outlet grille
7. Continuous draining outlet
8. Wheels
9. Drain hose (only on some models)



## INTRODUCTION

Thank you for choosing a Superclima product. Take a couple of minutes to read these instructions.

This will avoid danger or damage to the appliance.

### Symbols used in these instructions

These symbols draw your attention to important warnings.

It is vital to respect these warnings.

Failure to do so may result in electric shock, serious injury, burns, fire or damage to the appliance.



#### **Danger!**

Failure to observe this warning may result in life threatening injury by electric shock.



#### **Important!**

Failure to observe this warning may result in injury or damage to the appliance.



This symbol draws your attention to important recommendations and information.

### Problems and repairs

In the event of problems, first try and resolve them by reading the information given in the "Troubleshooting" section on page 8.

If the appliance requires repair, always contact a Center authorized by the manufacturer.

Always insist on original spare parts. Repairs carried out by unauthorized personnel may be dangerous and invalidate the guarantee.

## IMPORTANT SAFEGUARDS

### Fundamental safety warnings



**Danger!** This is an electrical appliance, it is therefore important to respect the following safety warnings:

- Do not touch the appliance with wet hands.
- Do not touch the plug with wet hands.
- Make sure the outlet used is always accessible, enabling you to unplug the appliance when necessary.
- Always unplug the appliance using the plug itself. Never pull the cable as it might be damaged.
- To disconnect the appliance completely from the electricity supply, you must unplug it from the outlet.
- If the appliance malfunctions, do not attempt to repair it yourself.  
Turn the appliance off, unplug from the outlet socket and contact a Service Center.
- Do not move the appliance by pulling the power cable.
- It is dangerous to modify or alter the characteristics of the appliance in any way.
- If the power cable is damaged, it must be replaced by the manufacturer or an authorized technical service center in order to avoid all risk.
- Do not use extension cords.
- The appliance must be installed in accordance with the rules on household appliances in force in the country concerned.
- The appliance must be connected to a properly grounded outlet.  
Have your electrical circuit checked by a qualified electrician.
- This appliance is not intended for use for water damage restoration of commercial/household properties.



**Danger!** Keep packaging materials (plastic bags, polystyrene foam) out of reach of children.



**Danger!** The appliance is not intended for use by persons (including children) with reduced physical, sensory or mental capabilities, or lack of experience and knowledge, unless they have been given supervision or instruction concerning use of

the appliance by a person responsible for their safety. Always supervise children. Make sure they do not play with the appliance.

## SAVE THESE INSTRUCTIONS

THIS PRODUCT IS FOR HOUSEHOLD ONLY

### Appropriate use

The appliance is designed and produced for domestic use only.

Use this appliance only as described in this instruction manual. As with all electrical equipment, the instructions aim to cover as many eventualities as possible. However, caution and common sense should be applied when operating and installing this appliance.

### General safeguards

- Do not install the appliance in rooms containing gas, oil or sulphur. Do not install near sources of heat.
- Do not use the appliance on sloping surfaces.
- Keep the appliance at least 2 ft (61cm) away from flammable substances (alcohol etc) or pressurised containers (e.g. aerosol cans).
- Do not rest heavy or hot objects on top of the appliance.
- Always transport the appliance upright, NOT on its side.  
Remember to drain the condensate tank before moving the appliance.  
If the appliance was transported on its side, you must wait at least 6 hours before using it (24 hrs is recommended).

**ENVIRONMENTAL INFORMATION:** This unit contains fluorinated greenhouse gases covered by the Kyoto Protocol. Avoid perforating the refrigerant circuit of the appliance. Maintenance and disposal must be carried out by qualified personnel only (R410A, GWP=1975).

- The materials used for packaging can be recycled.  
You are therefore recommended to dispose of them in special differentiated waste collection containers.
- Do not use the appliance outdoors.
- Do not use the appliance in laundry rooms.

### Instructions

Read these instructions carefully before installing and/or using the appliance.

- Keep these instructions.  
If the appliance is transferred to other owners, they should also be given these instructions.
- Failure to respect the instructions may result in injury or damage to the appliance.  
The manufacturer is not liable for damage deriving from failure to follow these instructions.

### Electrical connections

Before plugging the appliance into the outlet, check that:

- The outlet, power supply corresponds to the working voltage indicated on the rating plate.
- The power outlet, and electrical circuit are adequate for the appliance.
- The power outlet, matches the plug. If this is not the case, have the plug replaced by a qualified electrician;
- The outlet is properly grounded.

## INSTALLATION

### Wheels mounting (only on some models)

Wheels mounting is recommended to avoid damage to floors.

1. Remove the wheels from the tank of the dehumidifier.
2. Position the dehumidifier on its side.
3. Mount the wheels according to the arrow direction (Fig 1).
4. Slide the wheels in as far as it will go. The wheels will snap into place.
5. Repeat steps 1 to 4 for other 3 castors.

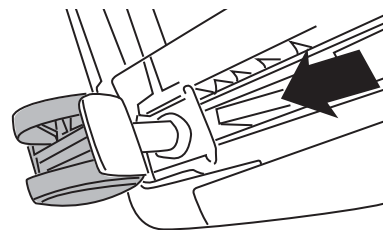


fig. 1

Position the appliance in the room to be dehumidified. A free space of at least 2 ft (61 cm) must be left at the front of the dehumidifier, so as not to block the air outlet.

For efficient ventilation a space of about 2-4 in (5-10 cm) should be left at the back of the appliance. The condensate can be drained in one of the following ways:

### A) Draining into the tank

The condensate can be drained directly into the tank. The tank can be easily removed (fig.2). When the tank is full, remove and empty it into a sink.

When finished, replace it properly.

**NOTE:** When the tank is removed the indicator light will turn on, the unit will shut off.

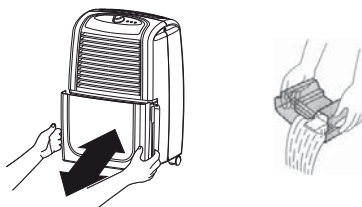
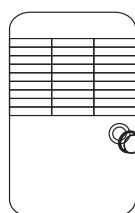


fig. 2

### B) Continuous external draining

If the appliance is to be operated for long periods but you are unable to empty the tank regularly, you are recommended to use continuous draining.

- 1) Remove the stopper from the drainage outlet (fig.3).



Tube stopper

- 2) Remove the flat pad from the stopper (fig.4).

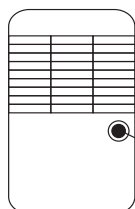


fig.4



Flat pad

Tube stopper

- 3) Insert the drain cap into the condensate drain hose (fig.5).
- 4) Screw the amended hose into the drainage outlet.

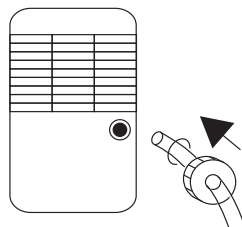


fig. 5

- 5) Make sure the end of the hose is no higher than the spout or water could remain in the tank. Make sure there are no kinks in the hose (fig. 6/7).

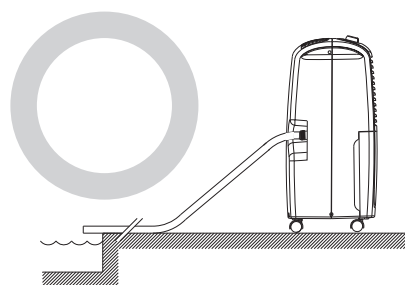


fig. 6

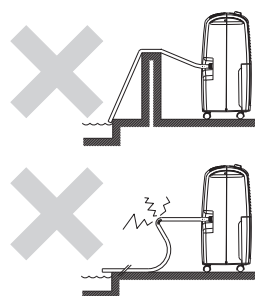
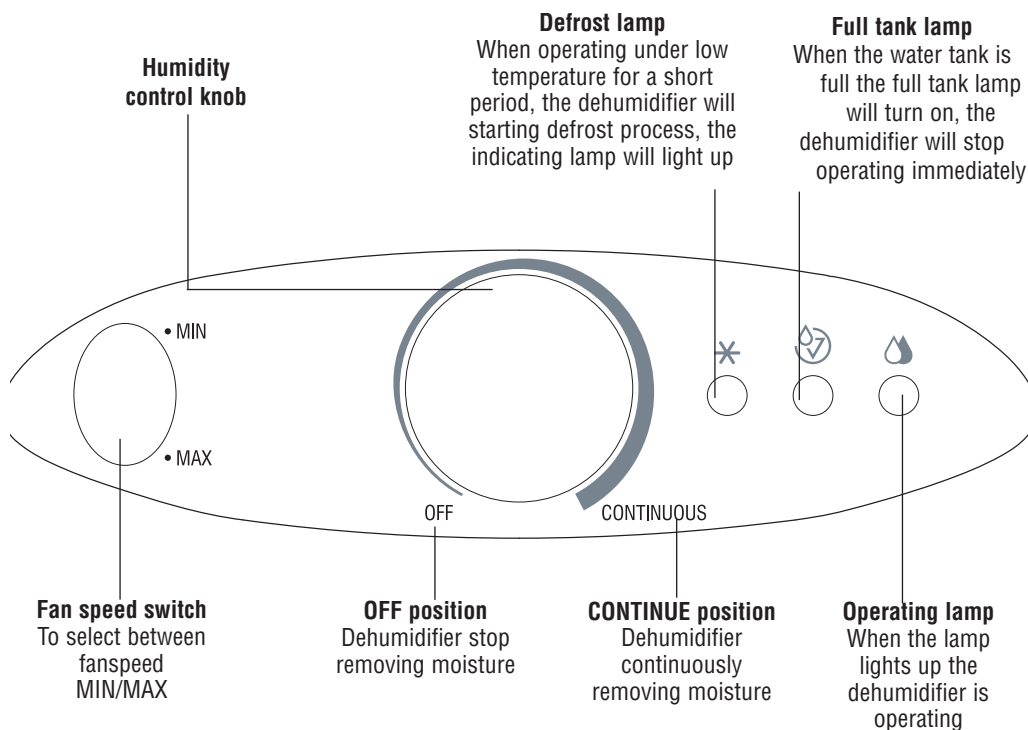


fig. 7

**i** The tank must be in place and securely seated for the dehumidifier to operate.

**i** The dehumidifier will turn off automatically when the tank is full, or when the tank is removed or not replaced in the proper position.

## CONTROL PANEL



### How to dehumidify

- Plug the appliance into a mains socket.
- Make sure the "Full tank indicator light" is off. If it is on, position the tank correctly.
- Turn the humidity control knob clockwise to the desired humidity. If the room humidity is over the set humidity, the machine will start working.
- When the humidity in the room reaches the set humidity, the machine will stop operating.
- When the humidity in the room is over the set humidity then the machine will start removing moisture again.

### Auto defrosting function

With a very low ambient temperature (less than 12°C) the appliance automatically performs defrosting cycles and the defrost lamp will light on.

### Continuous mode (drying washing)

To remove a large amount of moisture (for example when drying washing), you are recommended to operate the appliance with the humidity control knob in the "continuous" position.

In this mode, the dehumidifier operates continuously, irrespective of the level of humidity in the room.

## CLEANING AND MAINTENANCE

Always unplug the appliance from the power outlet before performing any cleaning or maintenance operations.

For safety reasons, never wash the dehumidifier using a jet of water.

### Cleaning the cabinet

- Clean the appliance using a damp cloth then dry with a dry cloth.
- Do not use petrol, alcohol or solvents to clean the appliance.
- Do not spray liquid insecticide or similar products as they may deform the plastic.

### Cleaning the air filter

If the filter is dirty, air circulation is compromised and the efficiency of the dehumidifying and air purifying functions decreases.

It is therefore good practice to clean the filter at regular intervals. The frequency depends on the duration and conditions of operation.

If the unit is used constantly or systematically, you are recommended to clean the filter once a week.

To remove the filter, pull it down as shown in figure 8.

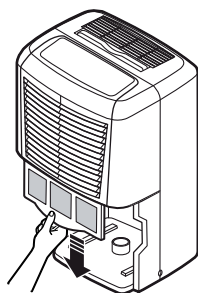


fig. 8

## TECHNICAL SPECIFICATIONS

Power supply voltage	See rating plate
Absorbed power	"
Maximum power input	"
Freeze protection device	Yes
Hygrometer	Yes
Fan speeds	2
Air filter	Yes

### Operating limits:

temperature	41°F-89.6°F (5°C-32°C)
relative humidity	35-90%

### If the appliance is not used for long periods

- After unplugging the appliance from the power outlet, empty the tank.
- Clean and reposition the filter.
- Cover the appliance with a plastic bag to protect it from dust.

## TROUBLESHOOTING

Check the following points before calling your local authorised Service Centre.

PROBLEMS	CAUSE	SOLUTION
The appliance is operating in dehumidifying mode, but the humidity does not decrease.	The filter is blocked.	Clean the filter.
	The temperature or humidity in the room are too low.	In certain conditions, it is normal for the appliance not to dehumidify (in certain cases, it is recommended to heat the environment).
	The room is too big for the dehumidifying power of the appliance.	
	Too many sources of humidity in the room (pots of boiling water, etc.).	
	The humidity set point is too high.	Decrease the humidity set point.
The appliance does not work for 3 minutes after start-up.	The safety device has tripped.	Wait for 3 minutes to pass.
The appliance does not work.	• The appliance is not plugged in	• Plug into the mains
	• There is no current	• Check the power supply
	• The Humidity Control may not be set low enough.	• For drier air, position the humidity control knob to the “continuous” position for maximum dehumidification.
	• The tank is full of water	• Empty the tank
	• The tank is not in the correct position (red light on)	• Gently place the tank in the correct position

This warranty applies to all home appliances with Superclima brand names.

FOR CONTIGUOUS UNITED STATES ONLY

### **Limited Warranty**

We warrant each appliance to be free from defects in material and workmanship. From the purchase date, our obligation under this warranty is to provide one (1) year free parts and labor on the entire appliance, with an additional four (4) years free on any part of the sealed system consisting of the compressor, evaporator, condenser and factory connected refrigerant tubing. Labor and all other parts during the additional four (4) year warranty are to be paid by the owner. All appliances in need of repair are to be shipped to an authorized Superclima service center at the owner's expense, and Superclima will then incur the return shipping costs. After the first five (5) years of ownership, all expenses (all parts, labor and shipping) are to be paid by the owner of the unit. This warranty shall apply only if the appliance is used in accordance with the factory directions that accompany it, and on an Alternating Current (AC) circuit. This warranty is in lieu of all other warranties and representations, expressed or implied, and all other obligations or liabilities on our part. We do not authorize any other person or company to assume for us any liability in connection with the sale or use of our appliance. This warranty shall not apply to any appliance that has been repaired or altered outside our factory nor shall it apply to any appliance that has been subjected to misuse, negligence or accidents.

If repairs become necessary, see contact information below:

#### **U.S. Residents:**

Please contact our toll free hotline at 1-800-322-3848  
For all accessories, spare parts or replacement parts, please contact our parts division  
at 1-800-865-6330.

#### **Residents of Canada:**

Please contact our toll free hotline at 1-888-335-6644