



ELECTRIC CONVECTOR HEATER

HCO series

Please retain these instructions for future reference



Living innovation

Fig. 1

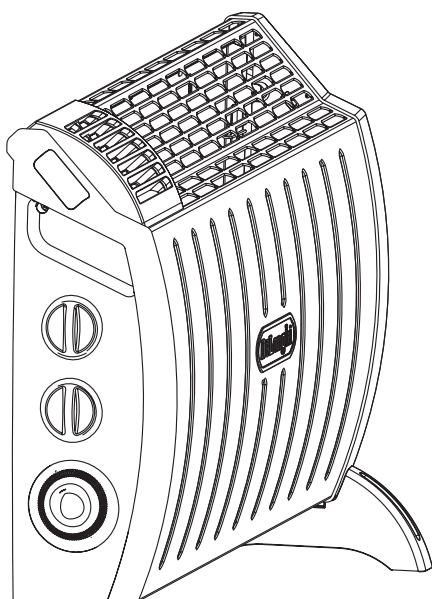


Fig.2

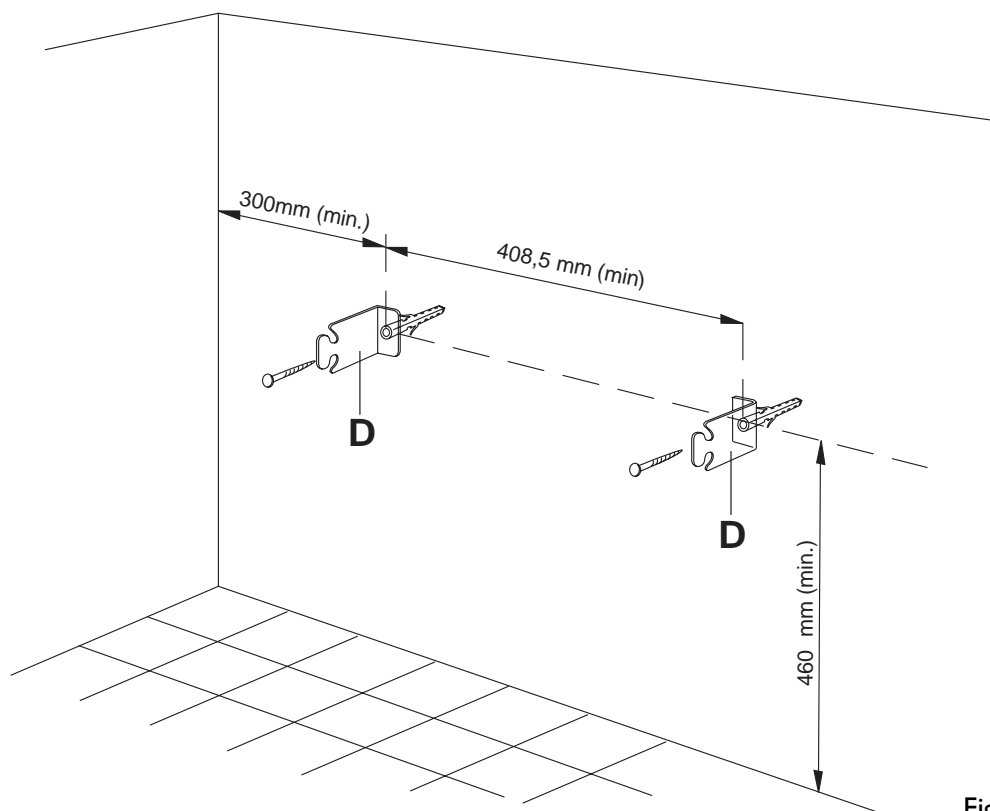
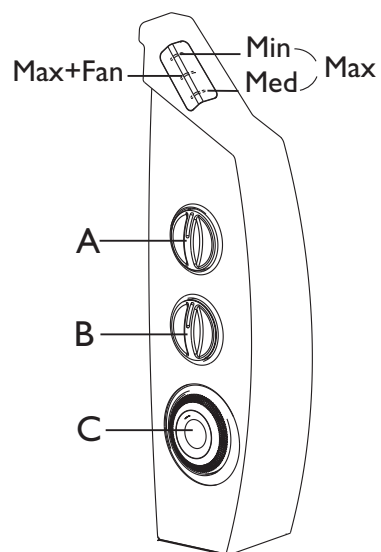


Fig. 3

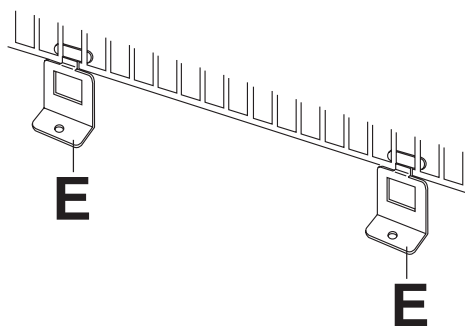


Fig. 4

Thank you for choosing this electric convector heater.

To get the very best out of your new electric convector heater it is advisable to read these instructions before using the appliance. This is the only way to ensure optimum results and maximum safety.

General instructions

Remove the heater from the packaging.

Check that neither the heater nor the power cable has been damaged in any way during transportation. Do not operate the heater if damaged.

Electrical connection

- Before plugging the electric convector heater into the mains, check that your supply voltage is the same as that shown on the rating plate of the appliance.
- If using more than one appliance at a time, it is important to ensure that the ring main is adequate to cope with the power requirements.
- It is important to ensure that the socket is adequately earthed.
- This appliance complies with EEC Directive 89/336 relating to electromagnetic compatibility.

How to use it

To fit the feet, proceed as follows:

Insert the foot into the guide on the side and push as far as it will go until the two teeth hook in place (fig. 1).

Wall mounting

IMPORTANT: Before drilling into any wall ensure no electrical cables are present in the area.

In order to wall mount your convector please proceed as follows:

1. Fix two brackets “**D**” following carefully the dimensions as indicated in fig.3. Use a 6 mm masonry drill and use the wall plugs and screws provided or suitable wall plugs for your type of wall.
2. Hang the convector on the two brackets fixed to the wall and insert metal brackets “**E**” into the bottom rear section of the base of the convector as indicated in figure 4, one at each end.
Mark the positions for fixing these brackets to the wall.
This bracket when fixed retains the base of the convector in a fixed position, preventing removal.
3. Remove the convector heater from the hanging brackets and drill the wall for 2 x suitable wall plugs and insert them.
4. Fit the convector to the 2 brackets “**D**”. Insert Brackets “**E**” to the convector base and fix brackets “**E**” to the wall plugs by means of the supplied screws.

Your convector is now wall mounted.

The appliances should not be installed directly under a wall power socket.

Do not use your heater in a bathroom.

The appliance should not be installed immediately below a permanent mains outlet.

Position the appliance so that the plug and the outlet can be easily reached even after installation.

Turning on

Plug into the mains, turn the thermostat dial (**B**) to maximum and turn the appliance on by means of the power selector (**A**) as described below.

- Turn the selector to the **Min** position to select minimum power (the Min power light comes on).
- Turn the selector to the **Med** position to select medium power (the Med power light comes on).
- Turn the selector to the **Max** position to select maximum power (the Max power light comes on).

Adjusting the thermostat

When the room has reached the required temperature, turn the thermostat dial (**B**) slowly anticlockwise until the lights go out and no further. The thermostat will automatically regulate the temperature set and keep it constant. In spring or autumn or on mild days, you can save energy by using minimum power.

Frost prevention mode

With the thermostat dial in the ✕ position and one of the power levels selected, the appliance maintains room temperature at about 5°C, preventing freezing with minimal energy consumption.

Models with fan

A number of models have a fan for faster more even heating. To use this function, turn the power selector (**A**) to the Max + Fan position (the corresponding light comes on).

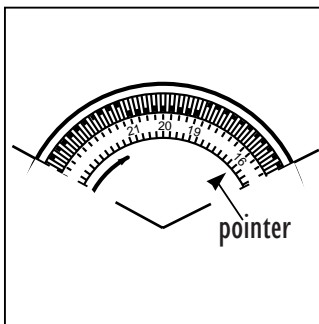


Fig.5

Using the timer(C)

To set the heating periods proceed as follows:

Setting the correct time

Check the time on your watch. If for example it is 4.00 pm. (16.00), turn the dial in a clockwise direction until the number 16 is lined up with the triangular pointer (fig.5).

N.B.: Never turn the dial in an anti-clockwise direction!

The timer is in effect, an electric clock and works only if the plug is connected to the power supply. Whenever the plug is disconnected or there is a power failure, the clock must be re-set.

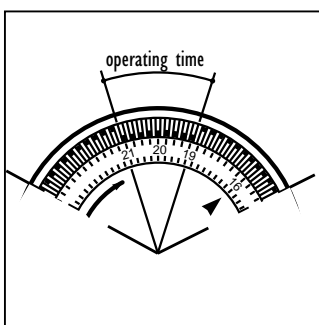


Fig.6

To program the timer

- 1) Set the operating times by pushing in the notches on the dial corresponding to the period required (each notch represents 15 mins.) (fig.6).
- 2) Make sure that the timer indicates the correct time (see instructions on setting the correct time).
- 3) Select the desired function.

Once programmed in this way, the appliance will repeat the pre-established program every day.

Maintenance

Always unplug from the mains socket before cleaning.

The convector heater requires no special maintenance. It is sufficient to remove dust with a soft dry cloth. Clean when cold only.

Never use abrasive powders or solvents.

Warnings

- Do not use the heater in a bathroom or in the vicinity of bathtubs, wash basins, showers or swimming pools.
- Never use the heater to dry laundry.
- Only use the heater in an upright position.
- The heater must be positioned at least 50cm from walls, curtains, furniture or other objects.
- The first time you use the appliance, operate it for at least 15 minutes with the thermostat at maximum to eliminate the "new" smell. A little smoke due to the protective substances applied to the heating element before transport may be given off.
- If the supply cord is damaged, it must be replaced by the manufacturer, its service agent or similarly qualified persons in order to avoid a hazard.
- Do not use this appliance in rooms which have a floor area smaller than 4m² as this may lead to overheating.
- The heater must never be placed immediately under a fixed mains socket.
- Never obstruct the heaters intake and outlet grilles as this could cause dangerous overheating.
- **IMPORTANT:** Never for any reason cover the appliance during operation as this could lead to dangerous overheating.
- The use of an extension lead is not recommended, as overheating of the extension lead may occur during the operation of the heater.
- **CAUTION:** In order to avoid a hazard due to inadvertent resetting of the thermal cutout, this appliance must not be supplied through an external switching device, such as a timer, or connected to a circuit that is regularly switched on and off by the utility.
- As with any electrical appliance, whilst the instructions aim to cover as many eventualities as possible, caution and common sense should be applied when operating your appliance, particularly in the vicinity of young children.

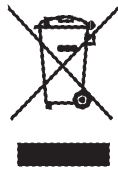
A safety device intervenes and turns off the appliance in the event of overheating or because the appliance is positioned in a strong draught of air. To reactivate it, remove the plug from the electrical outlet, allow the appliance to cool (about 30'), remove the cause of the overheating/draught and then reconnect the appliance to the mains and turn it back on. A number of models have a special device to cut off current if the unit is overturned, placed at an angle or knocked. An acoustic warning indicates the problem.



WARNING: In order to avoid overheating, never under any circumstances cover the appliances during operation, as this would lead to dangerous overheating.

CAUTION: In order to avoid a hazard due to inadvertent resetting of the thermal cutout, this appliance must not be supplied through an external switching device, such as a timer, or connected to a circuit that is regularly switched on and off by the utility.

IMPORTANT INFORMATION FOR CORRECT DISPOSAL OF THE PRODUCT IN ACCORDANCE WITH EC DIRECTIVE 2002/96/EC.



At the end of its working life, the product must not be disposed of as urban waste. It must be taken to a special local authority differentiated waste collection centre or to a dealer providing this service. Disposing of a household appliance separately avoids possible negative consequences for the environment and health deriving from inappropriate disposal and enables the constituent materials to be recovered to obtain significant savings in energy and resources. As a reminder of the need to dispose of household appliances separately, the product is marked with a crossed-out wheeled dustbin.

Electrical connection (U.K. only)

- A) Your appliance comes fitted with a plug, it will incorporate a 13 Amp fuse. If it does not fit your socket, the plug should be cut off from the mains lead, and an appropriate plug fitted, as below.

WARNING: Very carefully dispose of the cut off plug after removing the fuse: do not insert in a 13 Amp socket elsewhere in the house as this could cause a shock hazard.

With alternative plugs not incorporating a fuse, the circuit must be protected by a 15 Amp fuse.

If the plug is a moulded-on type, the fuse cover must be re-fitted when changing the fuse using a 13 Amp Asta approved fuse to BS 1362. In the event of losing the fuse cover, the plug must NOT be used until a replacement fuse cover can be obtained from your nearest electrical dealer. The colour of the correct replacement fuse cover is that as marked on the base of the plug.

- B) If your appliance is not fitted with a plug or if it must be replaced, please follow the instructions provided below:

The wires in the mains lead are coloured in accordance with the following code:

Blue:	Neutral
Brown:	Live

As the colours of the wires in the mains lead may not correspond with the coloured markings identifying the terminals in your plug, proceed as follows:

The blue wire must be connected to the terminal marked with the letter N or coloured black.

The brown wire must be connected to the terminal marked with the letter L or coloured red. If you have a 3-pins plug, do not connect any wire to the "earth" terminal.

