



*We were thinking of you  
when we thought of it*

---

**IMPORTANT**  
DO NOT OPERATE WITHOUT READING  
INSTRUCTIONS FIRST

---

Spare copies of this leaflet can be obtained  
from your dealer

## **DRAGON HM3**

Proudly distributed by

**De'Longhi Australia Pty Limited**

P.O. BOX 4540

CASULA MALL NSW 2170

Customer Service Ph: 1800 126 659

Fax: 1800 706932

[www.delonghi.co.au](http://www.delonghi.co.au)

e-mail: [delonghi@delonghi.com.au](mailto:delonghi@delonghi.com.au)

**De'Longhi New Zealand Limited**

25 Carbine Road

Mt Wellington

Auckland, New Zealand

P.O. Box 58-056 Botany

MANUKAU 2163

Customer Service Ph: 0508 200 300

Fax: 0508 200 301

[www.delonghi.co.nz](http://www.delonghi.co.nz)

e-mail: [delonghi@delonghi.co.nz](mailto:delonghi@delonghi.co.nz)

**Thank you for choosing this De'Longhi radiator. To get the very best out of your new radiator it is advisable to read these instructions before using it. This will ensure that you gain optimum results and use the appliance safely.**

### **General instructions**

Take the radiator out of its packing box and remove any polystyrene pieces or any other packaging material that might be lodged inside it.

Make sure that the radiator has not been damaged during transit and that the mains cable is in working order. Do not operate the radiator if damaged.

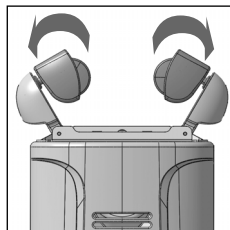


Fig. 1

### **“Easy wheel”system**

Turn the radiator upside-down on a rug or a soft surface in order to prevent damaging the paint finish. Fully unfold the castors by turning them outwards (Fig. 1). Turn the radiator back to its upright position.

### **Electrical connection**

- Before plugging the radiator into the mains, check that your supply voltage is the same as that shown on the rating plate of the radiator.
- If using more than one appliance at a time, it is important to ensure that the ring main is adequate to cope with the power requirements.
- It is important to ensure that the socket is adequately earthed.
- THIS APPLIANCE COMPLIES WITH DIRECTIVE 2004/108/EEC ON RADIO INTERFERENCE SUPPRESSION.

### **How to use it**

#### **Switching on**

Plug the radiator in and position the thermostat slider to maximum and turn the radiator on as follows using the power selector:

- Turn the power selector to position 1 to select minimum output (the light on the left will come on).
- Turn the power selector to position 2 to select medium output (the light on the right will come on).
- Turn the power selector to position 3 to select maximum output (both lights will come on).

## Adjusting the thermostat

Leave the thermostat at its highest setting until the room has reached the required temperature. Then slowly turn the thermostat slider back until you hear a click. The temperature selected in this way will then be regulated automatically and kept constant by the thermostat.

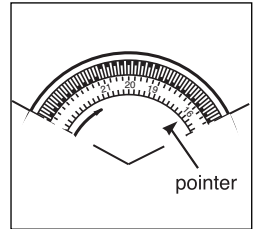


Fig.2

## Frost protection function

With the thermostat slider in the minimum position and a power selected, the unit maintains the room at a temperature of about 5°C, preventing freezing with minimum energy consumption.

## Models with 24-hour timer

### Using the timer

If you wish to use the timer, position the switch in the middle position ⌚ (Fig. 4).

### Setting the correct time

Check the time on your watch. If for example it is 4.00 pm. (16.00), turn the dial in a clockwise direction until the number 16 is lined up with the triangular pointer (fig.2).

N.B.: Never turn the dial in an anti-clockwise direction!

The timer is in effect an electric clock and works only if the plug is connected to the power supply. Whenever the plug is disconnected or there is a power failure, the clock must be re-set.

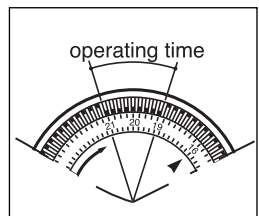


fig.3

### To program the timer

- 1) Set the operating times by pushing in with your thumbnail to the outer rim, the notches on the dial corresponding to the period required (fig.3) (each notch represents 15 mins.)
- 2) Make sure that the timer indicates the correct time (see instructions on setting the correct time).
- 3) Turn the radiator on and set it to the heat setting and temperature level on the thermostat as required.

Once programmed in this way, the appliance will repeat the pre-established program every day, if the selector is in the ⌚ position.

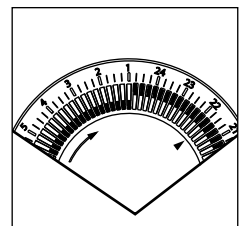
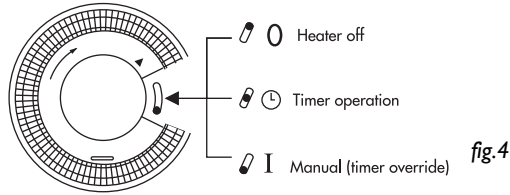


fig.3

### Timer override

If you wish to override the timer settings, push the timer switch to position I (fig.4) manual (timer override). To return to timed operation push the switch back to the middle position ⌚ (fig.4).



**NOTE:** if the timer switch is at the **0** position (fig.4), the heater is off and will not operate).

### Cleaning and maintenance

Your oil filled radiator is absolutely free from maintenance, fully reliable and will give many years of trouble free service. Wipe radiator with soft damp cloth; do not use detergents or abrasives.

If necessary, use a vacuum cleaner to remove any built-up dirt.

### Important notes

- Do not use your radiator close to bath, wash-basin, shower and swimming pool.
- Do not use your radiator to dry laundry.
- Never place the power cable on top of the radiator while it is hot.
- Only use the radiator in an upright position.
- The heater must be positioned at least 50 cm from furniture or other objects.
- If the power cable has been damaged, it must be replaced by the manufacturer or the technical service centre or by a qualified person so as to avoid all risks.
- In order to eliminate the radiator's "new" smell, set it to maximum power for at least a few hours when used for the first time. During this operation, the room in which the radiator is located must be ventilated.
- The power cord should be fully removed from the cord storage unit when in use.
- The appliance is not intended for use by persons (including children) with reduced physical, sensory or mental capabilities, or lack of experience and knowledge, unless they have been given supervision or instruction concerning use of the appliance by a person responsible for their safety. Children should be supervised to ensure that they do not play with the appliance.
- The appliance is fitted with a tilt-switch which turns the appliance off if it should fall over.  
To restart the appliance, simply place it upright again.
- It is perfectly normal for the radiator to make "creacking"

sounds when used for the first time. (or in the case of unfrequent use).

- The radiator must not be located immediately below a fixed socket-outlet.
- The body of this radiator is filled with a precise quantity of special oil, so that repairs requiring the opening of the oil body must only be made by the service agent. Any oil leakage must be reported to the service agent.
- Do not use this appliance in rooms having a floor area of less than 4m<sup>2</sup> as this can lead to overheating.
- If the appliance is scrapped, provisions on the disposal of oil must be respected.
- The use of an extension lead is not recommended, as overheating of the extension lead may occur during the operation of the radiator.
- As with any electrical appliance, whilst the instructions aim to cover as many eventualities as possible, caution and common sense should be applied when operating your appliance, particularly in the vicinity of young children.

**A safety device will turn the radiator off. To reset, contact the technical assistance service.**

**ATTENTION:** in order to avoid any danger caused by an accidental resetting of the safety system, this appliance must not be powered through an external timer.



**IMPORTANT:** Do not cover the radiator during operation as this could lead to dangerous overheating,

