



## STRETTO

**Please retain these instructions for future reference**



*Living innovation*

**Thank you for choosing this De'Longhi heater. To get the very best out of your new heater it is advisable to read these instructions before using it. This will ensure that you gain optimum results and use the appliance safely.**

### **General instructions**

1. Remove the heater from the packaging.
2. Turn the heater upside down and rest on the polystyrene.
3. Check that neither the heater nor the power cable has been damaged in any way during transportation.
4. Do not operate the heater if damaged.
5. Your heater is suitable for either freestanding or wall mounting usage.

Make sure that no pieces of polystyrene or other packaging material have been left between the elements of the appliance.

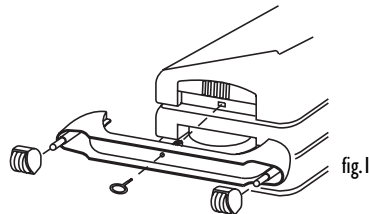
It may be necessary to use a vacuum cleaner to help eliminate the small pieces.

### **Fitting the castors**

Remove the castors, wheels and assemblies from the polystyrene packaging.

In the unlikely event that there are any parts missing please contact our customer services department on 0845 600 6845 who will send you the part by return.

Insert the castors into the pins of the feet and push them all the way in until a click can be heard (fig 1) Make sure that they are in tightly by pulling the wheels gently. Attach the castor assembly into the base of the control panel by inserting the guiding ridges between the control panel and the first element and between the end panel and the last element; insert the location lug into his housing and lock the castor assembly to the product by inserting the eye screw and screwing it in tightly (fig 1). Finally turn the heater over to its upright position, ensuring you do not damage the wheels.



## Installation wall-mounting

The wall mounting kit should contain:

2 x Upper brackets (A)

1 x Lower brackets (B)

1. Select position for siting the heater ensuring that:
  - a. It is not located directly below a power socket outlet.
  - b. The plug and power outlet can be easily reached after installation.
  - c. No electric cables or other tubes could be damaged.
  - d. Keep away from curtains or inflammable materials. Also note the minimum distances indicated in the figure 2.

### Important

Before drilling into any wall ensure no electrical cables are present in the area.

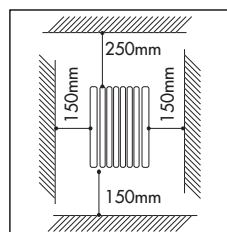
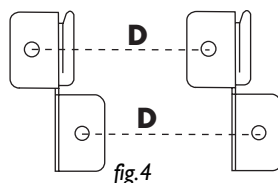
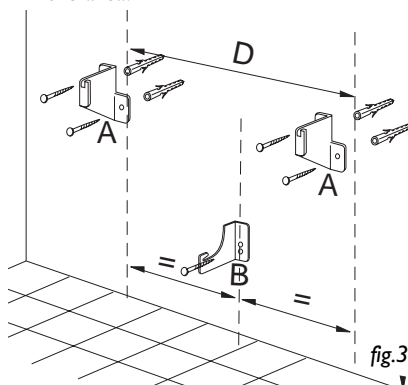


Fig.2

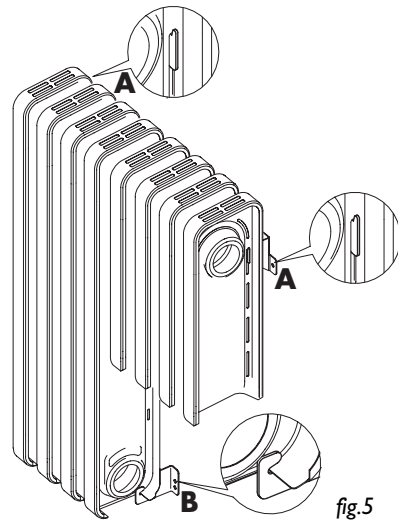
Minimum distances  
from surrounding  
walls/ furnishings

2. Following carefully the dimensions as indicated below (the distance depends on which model you have purchased) mark distance "D" on your wall.

Model	Distance	mm
1 Kw	D	140 mm
1,5 Kw	D	210 mm
2 Kw	D	280 mm
2,5 Kw	D	385 mm

3. Line up the centre of the holes of the brackets "A" with the marked line (indicated in fig.3/4 as a dashed line) ensuring that the 2 brackets are level, mark the holes to be drilled.
4. For solid brick block walls, use a 6 mm masonry drill and drill the marked holes and then insert wall plugs to suit.  
(For plasterboard we suggest, locating the studding and using No 6 woodscrews directly into the wood, or special plasterboard fixings. For other wall types please seek specialist advice).

5. Fix the brackets “**A**” onto the wall. Then hang the radiator (fig.5).  
To make it easier to locate brackets “**A**” into their respective slots (in the rear of the radiator), we suggest that you mark a pencil line on the back of the radiator adjacent to the top and bottom of each slot, so that you can see more easily the slots position.  
Once the brackets are located alongside the slots, move the radiator to the side to engage in the slots and hang the radiator on the brackets.
6. Mark the position for fixing the lower brackets “**B**” to the wall.  
This bracket when fixed retains the base of the radiator preventing removal.
7. Fit the radiator to the 2 brackets “**A**” (fig. 5). Insert bracket “**B**” in the middle of the radiator base as shown in figure 5.  
Fix the bracket “**B**” to the pre-drilled hole.  
Your radiator is now wall mounted.  
Do not use your heater in a bathroom.



### Electrical connection

- Before plugging the appliance into the mains, check that your supply voltage is the same as that shown on the rating plate of the appliance.
- If using more than one appliance at a time, it is important to ensure that the ring main is adequate to cope with the power requirements.
- It is important to ensure that the socket is adequately earthed.
- This appliance complies with EEC directive 89/336 regarding electromagnetic compatibility.

## Instruction for use

### Using for the first time

On using the appliance for the first time we advise that you turn it on to the maximum power setting for up to 8 hours. This is to eliminate the heater's "new odour". During this time ensure that the room is well ventilated.

### Operation and use

#### Turning the appliance on

Insert the plug into the mains socket and switch on.

Turn the thermostat dial clockwise to its highest setting.

The heater has 3 heat settings:

**Eco/night-time (min power):** Press the upper switch (the red light on the switch will come on)

**Medium power:** Press the lower switch (the red light on the switch will come on)

**Maximum power:** Press both switches (the red lights on both switches will come on)

To turn the appliance off, press both switches on the **0** position so the red lights are off and unplug at the mains.

We suggest that for night-time/ background heat or on days when temperatures are not particularly cold, select minimum output to optimise savings on energy consumption.

Please note that the min power setting will remain on, whilst the heater is switched on to maintain a comfort background heat.

#### Adjusting the thermostat

When the room has reached the desired temperature, turn the thermostat dial slowly in an anti-clockwise direction until you hear a click. The thermostat will now keep the temperature in the room constant, turning the heater on and at the minimum power to save energy.

#### Frost protection function

Turn the thermostat dial fully anti-clockwise so the \* is showing. Press only the lower switch on. When set in this way, the appliance will switch on automatically only if the room temperature falls below 5°C, to prevent freezing at minimum energy consumption.

#### Using the timer

If you wish to use the timer, position the switch in the middle position ⌚.

#### Setting the correct time

Check the time on your watch. If for example it is 4.00 pm. (16.00), turn the dial in a clockwise direction until the number 16 is lined up with the triangular pointer (fig.6).

N.B.: Never turn the dial in an anti-clockwise direction!

The timer is in effect an electric clock and works only if the plug is connected to the power supply. Whenever the plug is disconnected or there is a power failure, the clock must be re-set.

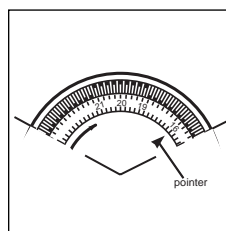
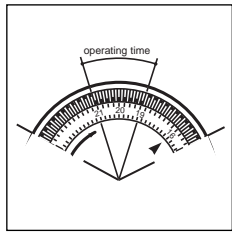


fig.6



g.7

### To program the timer

- 1) Set the operating times by pushing in the notches on the dial corresponding to the period required (fig.7) (each notch represents 15 mins.)
- 2) Make sure that the timer indicates the correct time (see instructions on setting the correct time).
- 3) Push switch(-es) in.

Once programmed in this way, the appliance will repeat the pre-established program every day, if the selector is in the ⌚ position.

### Timer override

If you wish to override the timer settings, push the timer switch to position 1 (fig.8) manual (timer override). To return to timed operation push the switch back to the middle position ⌚ (fig.8).

**NOTE:** if the timer switch is at the 0 position (fig.8), the heater is off and will not operate).

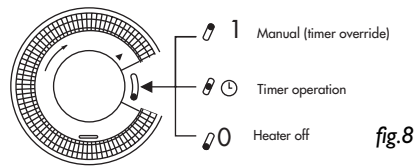


fig.8

### Cleaning and maintenance

The heater should not require any maintenance. However before attempting to clean the heater, unplug from the mains and wait for it to cool (this should take around 30 minutes). It is sufficient to remove external dust with a soft, dry cloth. Never use abrasive powders or solvents. If necessary, remove concentrated areas of dirt with a vacuum cleaner.

## Warnings

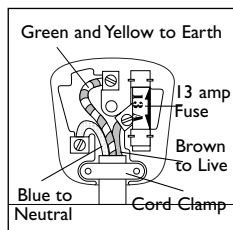
- Do not use the heater in a bathroom or in the vicinity of bathtubs, wash basins, showers or swimming pools.
- Never use the heater to dry laundry.
- Never rest the power cable on the heater's elements while it is hot.
- Only use the heater in an upright position.
- The heater must be positioned at least 50cm from furniture or other objects.
- If the power cable is damaged, it must be replaced by the manufacturer or an authorised technical service centre.
- It is normal for the heater to make 'crackling' noises during its first use (or if it has not been used for a long time).
- The body of the heater is filled with an exact quantity of oil. If repairs are necessary which call for the opening of the heater, they must be done only by the manufacturer or an authorised service centre.
- In the unlikely event of oil leakage, contact the manufacturer or an authorised service centre.
- Do not use this appliance in rooms which have a floor area smaller than 4m<sup>2</sup> as this may lead to overheating.
- The heater must never be placed immediately under a fixed mains socket.
- When scrapping the appliance, respect legislation on the disposal of oil.
- The use of an extension lead is not recommended, as overheating of the extension lead may occur during the operation of the heater.
- In order to avoid any danger caused by an accidental resetting of the safety system, this appliance must not be powered through an external timer.
- As with any electrical appliance, whilst the instructions aim to cover as many eventualities as possible, caution and common sense should be applied when operating your appliance, particularly in the vicinity of young children.

**The appliance is fitted with a safety device which will switch off it in case of accidental overheating. To reset, contact an authorised service centre.**

**IMPORTANT:** never for any reason cover the appliance during operation as this could lead to dangerous overheating.

**Warning - this appliance must be earthed**

**Electrical requirements**



**Before using this appliance ensure that the voltage indicated on the product corresponds with the main voltage in your home, if you are in any doubt about your supply contact your local electricity company.**

The flexible mains lead is supplied connected to a B.S. 1363 fused plug having a fuse of 13 amp capacity. Should this plug not fit the socket outlets in your home, it should be cut off and replaced with a suitable plug, following the procedure outlined below.


**Note:** Such a plug cannot be used for any other appliance and should therefore be properly disposed of and not left where children might find it and plug it into a supply socket - with the obvious consequent danger.

**N.B.** We recommend the use of good quality plugs and wall sockets that can be switched off when the machine is not in use.

important: the wires in the mains lead fitted to this appliance are coloured in accordance with the following code:

GREEN AND YELLOW	EARTH
BLUE	NEUTRAL
BROWN	LIVE

As the colours of the wires in the mains lead of this appliance may not correspond with the coloured markings identifying the terminals in your plug, proceed as follows:

The wire which is coloured green and yellow must be connected to the terminal in the plug which is marked with the letter E or by the earth symbol  or coloured green or green and yellow.

The wire which is coloured blue must be connected to the terminal which is marked with the letter N or coloured black.

The wire which is coloured brown must be connected to the terminal which is marked with the letter L or coloured red.

When wiring the plug, ensure that all strands of wire are securely retained in each terminal. Do not forget to tighten the mains lead clamp on the plug. If your electricity supply point has only two pin socket outlets, or if you are in doubt, consult a qualified electrician.

Should the mains lead ever require replacement, it is essential that this operation be carried out by a qualified electrician and should only be replaced with a flexible cord of the same size.

After replacement of a fuse in the plug, the fuse cover must be refitted. If the fuse cover is lost, the plug must not be used until a replacement cover is obtained. The colour of the correct replacement fuse cover is that of the coloured insert in the base of the fuse recess or elsewhere on the plug. Always state this colour when ordering a replacement fuse cover.

Only 13amp replacement fuses which are approved to B.S. 1362 should be fitted.

This appliance conforms to the Norms EN 55014 regarding the suppression of radio interference.



5706000500/01.04