

This radiator is an extremely versatile home heating appliance with a choice of three power levels. It also incorporates an exclusive function enabling you to obtain optimum comfort in all situations. To get the best from your product, you should read the following instructions thoroughly.

1. GENERAL

Unpack the appliance and turn it upside down, resting it on the protective polystyrene packaging. Check that the power cable is intact and the appliance has not been damaged during transport. Do not use the appliance if it is damaged.

2. ATTACHING THE FEET

Remove the feet and castors from the polystyrene packaging.

Thread the castors onto the pins on the feet and push down until they click into place (fig.1). Pull to make sure the castors are firmly attached.

Attach the feet with castors to the bottom of the radiator by inserting them between the control box and the first element and the rear box and the last element. Fit the teeth into the housing provided and lock the foot in place with the eye screw, screwing it up fully (fig. 1).

When complete, turn the radiator back into the vertical operating position.

3. WALL MOUNTING

The wall mounting kit should include:

2 x top brackets (A)

1 x bottom bracket (B)

5 x screws

5 x anchors

2 x screws for the feet

1. Choose where the panel is to be installed, making sure that:
 - a. It is not immediately under a power socket.
 - b. The plug and the socket are easy to reach after installation.
 - c. Neither the power cables or other tubes can be damaged.
 - d. The panel is away from curtains or inflammable material.
2. Before drilling the wall, mark the exact points with a template respecting the dimensions (D, Fig. 3) which vary according to the model as shown in table **3A**.

Model	1Kw	1,5 Kw	2 Kw	2,5 Kw
D	140 mm	210 mm	280 mm	385 mm

3A

3. Line up the centre of the brackets **A** along the line indicated in fig. 3/4 by a dotted line, making sure the two brackets are at the same height, then mark the holes to be drilled.
4. For brick walls, use a 6 mm masonry bit and drill on the basis of the marks made previously, insert the anchors provided.
(For plasterboard or false walls, you should locate the wooden uprights and use 6 mm wood screws directly into the wood or use specific anchors. For any other type of wall, seek the advice of a specialist).
5. Attach the brackets "**A**" to the wall using the screws provided in the holes.

6. Hang the radiator on the brackets (fig. 3/4).
7. Identify the fixing position of the bottom bracket (**B**), attaching it to the centre of the base of the appliance. Use one of the screws provided to mark the exact position of the hole (fig. 3).
This bracket prevents accidental removal of the appliance.
8. Remove the radiator from brackets **A** and drill the hole as indicated previously for the holes for bracket A. Insert the anchor. Replace the radiator on brackets **A** with bracket **B** inserted and then fix with the screw (fig. 3).
The radiator is now fixed to the wall.
Do not use the appliance in the bathroom.

3. ELECTRICAL CONNECTION

- Before plugging into the mains, make sure the voltage of your mains supply corresponds to the value V indicated on the appliance and that the socket and power line are appropriate for the load required.
- CONNECT THE RADIATOR TO AN EFFICIENTLY EARTHED SOCKET ONLY.
- This appliance complies with directive 89/336/EEC and D.M. 476/92 on radio interference suppression.

4. OPERATION AND USE

Turning on

Plug into the mains. Turn the thermostat as far as it will go to maximum position. Turn the radiator on using the switch or switches.

Models with double switch (3 power levels)

- button "I" pressed = minimum power (indicator light on)
- button "II" pressed = intermediate power (indicator light on)
- both buttons "I" and "II" pressed = maximum power (indicator lights on)

To turn the appliance off, both switches must be in the "0" position, then unplug from the mains.

Adjusting the thermostat

When the room has reached the required temperature, turn the thermostat slowly until a "click" is heard and no further. This temperature will be regulated automatically and kept constant by the thermostat.

Frost protection function

With the thermostat in the * position, the top switch in the "0" position and the bottom switch in the "MED" position, the appliance keeps the room at a temperature of about 5°C, preventing freezing with minimum energy outlay.

Models with 24 hour timer

Using the timer

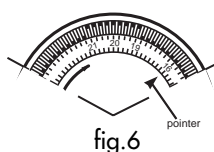
If you wish to use the timer, position the switch in the middle position ⌚.

Setting the correct time

Check the time on your watch. If for example it is 4.00 pm. (16.00), turn the dial in a clockwise direction until the number 16 is lined up with the triangular pointer (fig.6).

N.B.: Never turn the dial in an anti-clockwise direction!

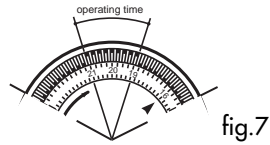
The timer is in effect, an electric clock and works only if the plug is connected to the power supply. Whenever the plug is disconnected or there is a power failure, the clock must be re-set.



To program the timer

- 1) Set the operating times by pushing out the notches on the dial corresponding to the period required (fig.7) (each notch represents 15 mins.)
- 2) Make sure that the timer indicates the correct time (see instructions on setting the correct time).
- 3) Push switch(-es) in.

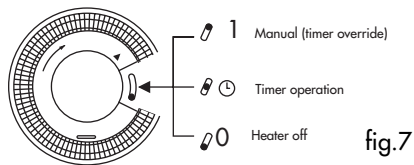
Once programmed in this way, the appliance will repeat the pre-established program every day, if the selector is in the ⌚ position.



Timer override

If you wish to override the timer settings, push the timer switch to position **1** (fig.8) manual (timer override). To return to timed operation push the switch back to the middle position ⌚ (fig.8).

NOTE: if the timer switch is at the **0** position (fig.8), the heater is off and will not operate).



Model with "Tilt-switch"

The heater is fitted with a tilt-switch which turns the appliance off if it should fall over. To restart the appliance, simply place it upright again.

Cleaning and maintenance

The heater should not require any maintenance. However before attempting to clean the heater, unplug from the mains and wait for it to cool (this should take around 30 minutes). It is sufficient to remove external dust with a soft, dry cloth. Never use abrasive powders or solvents. If necessary, remove concentrated areas of dirt with a vacuum cleaner.

5. MAINTENANCE

The oil-filled electric radiator requires no special maintenance. It is sufficient to remove dust with a soft dry cloth; clean when cold only. Do not use abrasive powders or solvents. If necessary, remove accumulations of dirt using a vacuum cleaner.

6. IMPORTANT

- Do not use the radiator in bathrooms or near bath tubs, showers, sinks or swimming pools.
- Do not use the radiator to dry washing, do not rest the power cable on hot elements.
- Always use the radiator in the vertical position.
- The appliance must be positioned at least 50 cm from furniture or other objects.
- If the power cable is damaged, it must be replaced by the manufacturer, an authorised service centre or a qualified electrician in order to eliminate all risk.
- The appliance is not intended for use by young children or infirm persons without supervision.
- Young children should be supervised to ensure that they do not play with the appliance.
- It is normal for the appliance to make "squeaking" noises when first turned on.
- The appliance must not be placed immediately under a fixed power socket.
- This appliance is filled with a precise quantity of oil and repairs requiring it to be opened must be carried out by the manufacturer or an authorised technical assistance centre only. In the event of oil leaks, contact the manufacturer or an authorised technical assistance centre.
- Do not use this appliance in rooms measuring less than 4m².
- When disposing of this appliance, respect legislation on disposal of oil.
- Do not rest the cable on the appliance when hot.
- Do not cover the appliance when in operation.
- The use of extensions is not recommended as they could overheat during operation of the appliance.

Take the appliance out of the packaging and remove any residues remaining inside the appliance.

A **safety device** shuts the radiator down in the case of accidental overheating.

To reset operation, contact the nearest authorised service centre.



IMPORTANT: Never under any circumstances cover the appliance during operation as this would lead to dangerous overheating.

5706000300/01.04