

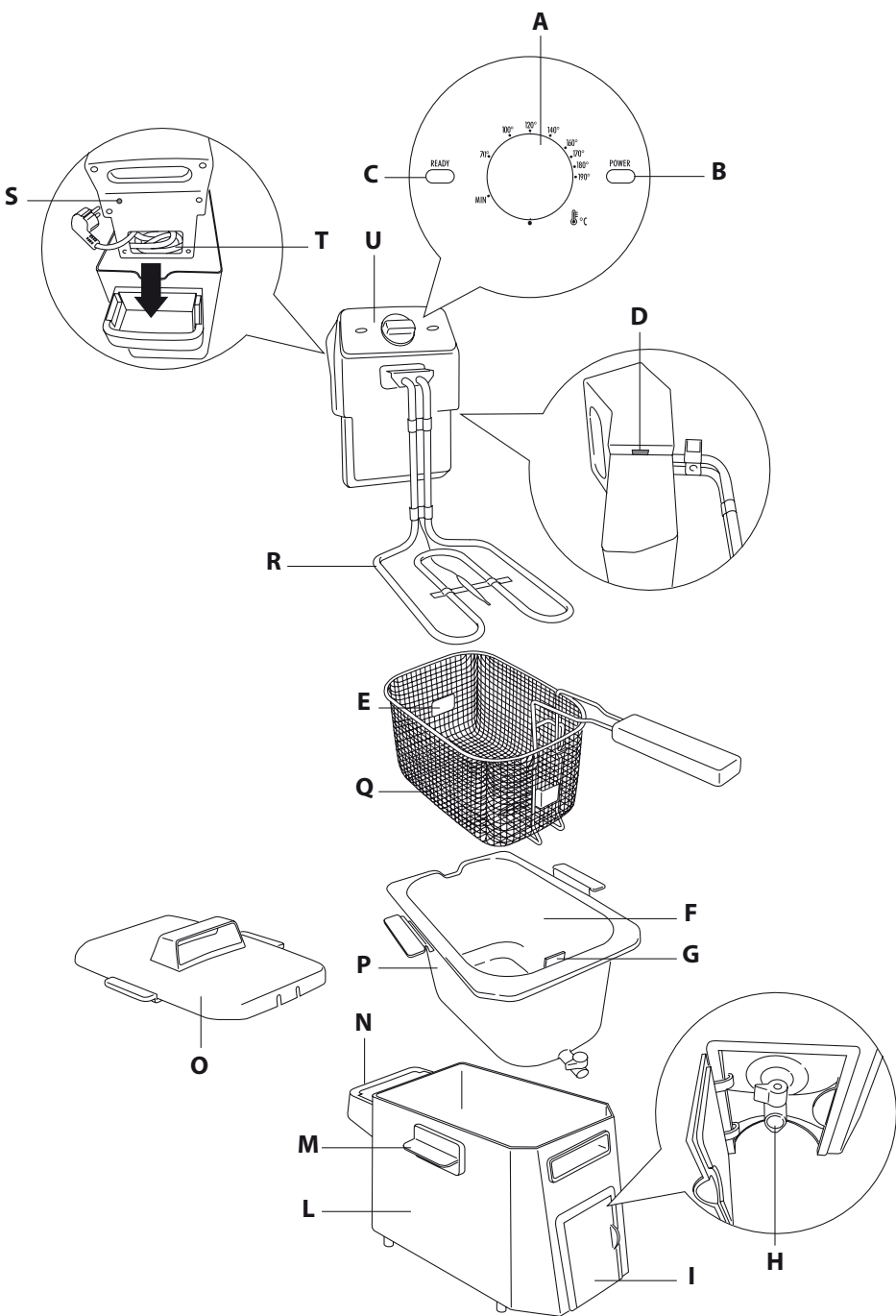


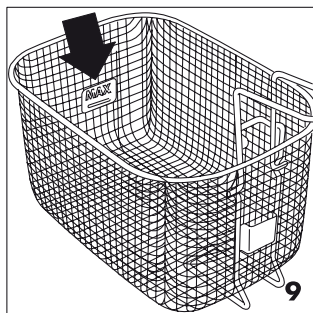
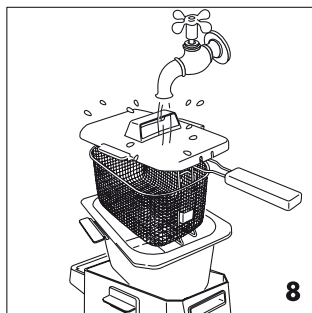
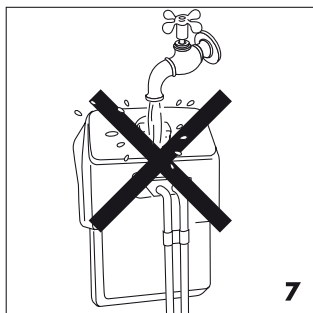
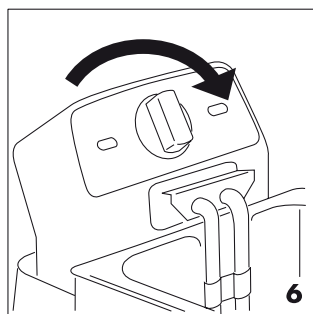
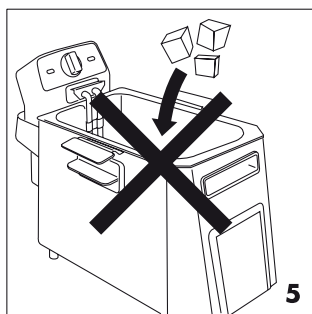
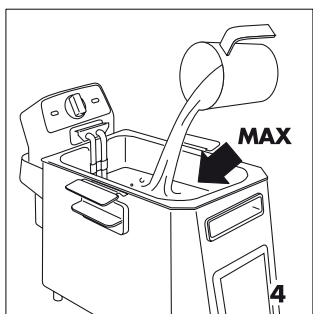
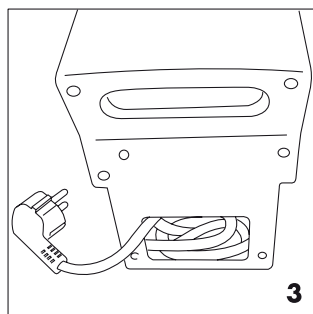
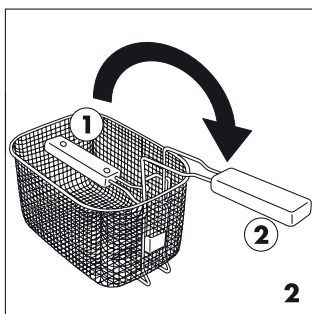
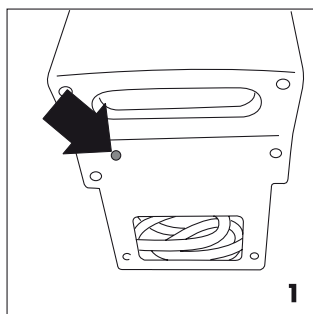
De'Longhi Appliances  
via Seitz, 47  
31100 Treviso Italia

Instruction for use

ELECTRIC DEEP FRYER  
F22310CZ







# important warnings

READ THIS INSTRUCTION BOOKLET CAREFULLY BEFORE INSTALLING AND USING THE APPLIANCE. THIS IS THE ONLY WAY TO ENSURE THE BEST RESULTS AND MAXIMUM SAFETY FOR THE USER.



## **Danger!**

Failure to observe the warning may result in life threatening injury by electric shock.

- Do not turn the appliance on if it is damaged (e.g. after having been dropped) or if operating problems arise. Contact a service centre authorised by the manufacturer.
- Before using the appliance check that the mains voltage corresponds to the value specified on the appliance rating plate.
- Only connect the appliance to power points with a minimum rating of 10A that are properly earthed.
- If the supply cord is damaged, it must be replaced by the manufacturer, its service agent in order to avoid a hazard.
- Do not remove the plug by tugging the power cable: always use the plug itself.
- The power cable must not be placed near or against the hot parts of the appliance, sources of heat or sharp edges.
- Do not position the appliance near sources of heat or where water may be present.
- Always keep the appliance disconnected during cleaning operations and when not in use.



## **Danger of burns!**

Failure to observe the warning could result in scalds or burns.

- Serious burns may be caused by the deep fryer falling. Do not leave the cable hanging from the edge of the surface the deep fryer rests on, where it may be within the reach of a child or represent an obstacle to the user. Do not use extension cords.
- During operation the appliance is hot; as a consequence, only use the handles and knobs. **DO NOT LEAVE THE APPLIANCE WITHIN THE REACH OF CHILDREN.**
- Do not move the deep fryer when the oil is hot, as this risks causing serious burns. The appliance must only be moved when cold, using the handles.
- The oil and fat are inflammable; if these substances catch fire, immediately disconnect the appliance from the power point and dampen the fire using the lid or a blanket. Never use water to extinguish the flames.
- When removing the bowl, always wait for the oil or fat to cool completely.



## **Important!**

Failure to observe the warning could result in injury or damage to the appliance.

- The deep fryer must be operated only after having correctly filled it with oil or liquefied fat; if heated when empty, a thermal safety device is activated to stop operation.

- Always respect the MIN and MAX levels indicated inside the removable container.
- The safety micro-switch ensures that the heating element operates only if the control unit is correctly positioned.
- Never immerse the control unit, the cable and the electrical plug in water or other liquids.
- The appliance is not intended for use by persons (including children) with reduced physical, sensory or mental capabilities, or lack of experience and knowledge, unless they have been given supervision or instruction concerning use of the appliance by a person responsible for their safety. Children should be supervised to ensure that they do not play with the appliance.



## **Please note:**

This symbol identifies important advice or information for the user.

- This is a household appliance only. It is not intended to be used in: staff kitchen areas in shops, offices and other working environment; farm houses; by clients in hotels, motels and other residential type environments; bed and breakfast type environments.
- Materials and accessories coming into contact with food conform to EC regulation 1935/2004.
- Appliance is not intended to be operated by means of an external timer or separate remote-control system.
- Keep these instructions.

## **DISPOSING OF THE APPLIANCE**



In compliance with European directive 2002/96/EC, the appliance must not be disposed of with household waste, but taken to an authorised waste separation and recycling centre.

## **ELECTRICAL CONNECTION (U.K. ONLY)**

- A) If your appliance comes fitted with a plug, it will incorporate a 13 Amp fuse. If it does not fit your socket, the plug should be cut off from the mains lead, and on appropriate plug fitted, as below. **warning:** Very carefully dispose of the cut off plug after removing the fuse: do not insert in a 13 Amp socket elsewhere in the house as this could cause a shock hazard. With alternative plugs not incorporating a fuse, the circuit must be protected by a 15 Amp fuse. If the plug is a moulded-on type, the fuse cover must be re-fitted when changing the fuse using a 13 Amp Asta approved fuse to BS 1362. In the event of losing the fuse cover, the plug must NOT be used until a replacement fuse cover can be obtained from your nearest electrical dealer. The colour of the correct replacement fuse

cover is that as marked on the base of the plug.


- B) If your appliance is not fitted with a plug, please follow the instructions provided below:  
warning - this appliance must be earthed  
important

The wires in the mains lead are coloured in accordance with the following code:



Green and yellow	Earth
Blue	Neutral
Brown	Live

As the colours of the wires in the mains lead may not correspond with the coloured markings identifying the terminals in your plug, proceed as follows:

The green and yellow wire must be connected to the terminal in the plug marked with the letter E or the earth symbol  or coloured green or green and yellow.

The blue wire must be connected to the terminal marked with the letter N or coloured black.

The brown wire must be connected to the terminal marked with the letter L or coloured red.

## DESCRIPTION OF THE APPLIANCE

(See illustration on the front cover)

- A. Thermostat dial for setting the temperature
- B. Power on light (red)
- C. Oil temperature light (green)
- D. Safety micro-switch
- E. Maximum food quantity indicator
- F. Oil MIN-MAX levels
- G. Basket support
- H. Oil drain tap
- I. Oil drain tap cover
- L. Casing
- M. Handles
- N. Slot for fitting the control unit
- O. Cover with handle
- P. Removable bowl
- Q. Basket with folding handle
- R. Electrical heating element
- S. Thermal safety device reset
- T. Cable storage
- U. Control unit

## THERMAL SAFETY DEVICE

The appliance is fitted with a thermal safety device that stops the appliance from heating in the event of incorrect use or irregular

operation. Once the appliance has cooled, using a toothpick or similar, delicately press the safety device reset button (S) marked RESET (see Fig. 1). If the appliance does not start operating again, contact De'Longhi Customer Experience. See warranty card.

## OPERATING INSTRUCTIONS

Before using the deep fryer for the first time, carefully clean, using warm water and dishwashing detergent, the basket, the bowl and the cover.

The control unit, power cable and heating element may be cleaned using a damp cloth. Check that water does not enter into the control unit and that there is no residual water in the bottom of the removable bowl.

Carefully dry all the parts. Check that the control unit is properly fastened to the deep fryer body. The safety micro-switch (D) will prevent the appliance from operating unless the control unit (U) is correctly positioned (N).

## FILLING WITH OIL OR FAT

- Turn the folding handle of the basket until it locks into place (pos. 2, Fig. 2). Remove the basket (Q) by lifting it upwards.
- If oil is used, pour it into the bowl (P) until reaching the maximum level indicated (see Fig. 4).

Never exceed this limit, as oil may overflow from the container. The level of oil must always be between the maximum and minimum limits (F). For best results, use good quality peanut oil.

- If lumps of fat are used, cut the lumps into pieces and melt them in another container, then pour the liquefied fat into the deep fryer bowl. Never melt the fat in the basket or on the deep fryer heating element (see Fig. 5).

## PREHEATING

- Place the food to be fried in the basket (Q), without exceeding the maximum level indicated on the basket (fig. 9). Check that the handle of the basket is correctly positioned (pos. 2 in Fig. 2).
- Connect to the mains supply. Both lights (B) and (C) come on.
- Move the thermostat dial (A) (see fig. 6) to the required temperature (see cooking table), the oil temperature light (green) (C) comes off.
- When the set temperature is reached, the green light (C) comes on.

## FRYING

- As soon as light (C) comes on, lower the basket (Q) into the oil very slowly to avoid the hot oil splashing or overflowing.

- A significant amount of steam will be released: this is completely normal.
- When the set cooking time has elapsed, lift the basket (Q) and check that the food has been cooked to the required colour.
- If the food is completely cooked, turn the appliance off by moving the thermostat dial (A) to the “-” position.
- Unplug from the mains socket.
- Allow the excess oil to drain by hooking the basket (Q) onto the support (G) on the bowl.

**i Please note:** To cook more than one batch of food, wait until the green light comes on, indicating that the oil is again at the set temperature.  
Then slowly place the basket (Q) in the oil a second time.

## HOW LONG THE OIL OR FAT LASTS

The level of oil or fat must never fall below the minimum. Every now and then it must be completely changed. The life of the oil or fat depends on what foods are being fried. Food coated in breadcrumbs, for example, dirties the oil more than simple frying.  
As for any deep fryer, the oil deteriorates after being heated a number of times! Therefore, even if used correctly, it should be completely changed on a regular basis.

## FRYING NON-FROZEN FOOD

Never overfill the basket, as this may cause a sudden drop in the temperature of the oil and thus result in greasier and less uniform frying. Check that the food is sliced into thin, even pieces. If the slices are too thick, the food will not be well cooked inside, despite its appearance, while even slices will be perfectly cooked at the same time.  
Carefully dry the food before immersing it in the oil or fat, to avoid oil being sprayed; furthermore, wet food will be less crisp after cooking (especially potatoes).  
Foods with a high water content (fish, meat, vegetables) should be crumbed or battered before frying, making sure the excess flour or breadcrumbs are removed before immersing the food in the oil. When cooking food in batter, you should first immerse the basket empty.  
Then, when the set temperature has been reached, immerse the food directly in the hot oil to avoid the batter sticking to the basket. When referring to the following table, please keep in mind that the cooking times and temperatures are approximate, and must be adjusted according to the quantity of food and personal tastes.

Food		Temperature (°C)	Time (minutes)
Fresh potato chips full portion		170°	11-15
Fish	Calamari	140°	9-13
	Sardines	140°	10-14
	Prawns	140°	8-12
	Cod or Haddock	140°	6-10
Meat	Pork cutlets	160°	8-12
	Chicken cutlets	160°	9-13
	Meatballs	160°	9-13
Vegetables	Artichokes	150°	13-18
	Cauliflower	150°	10-14
	Mushrooms	150°	8-12
	Aubergines	150°	9-13
	Courgettes	150°	13-18

## FRYING FROZEN FOODS

Frozen foods are stored at very low temperatures. Consequently, they significantly lower the temperature of the liquid used for cooking. For optimum results, do not overfill the basket.  
Frozen foods are often covered with a layer of ice; this ice should be removed before cooking. Immerse the basket in the oil very slowly to prevent the oil from boiling over.  
The cooking times are approximate and must be adjusted according to the initial temperature of the food being fried and the temperatures indicated on the packaging of the food.

Food		Temperature (°C)	Time (minutes)
Pre-cooked frozen potato chips		190°	10-14
Potato croquettes		180°	7-10
Fish	Fish-fingers	180°	3-6
	Fish fillets	180°	2-5
Meat	Chicken cutlets	180°	3-6



## CLEANING

Before cleaning, make sure that the power plug is disconnected.

Never immerse the deep fryer in water and never place it under running tap water (see Fig. 7). The infiltration of water into the control unit may cause electrocution. Check that the oil has cooled down, and drain the oil. Remove the deposits from the bowl using a sponge or absorbent paper.

Except for the control unit, power cable and heating element, all the other parts can be cleaned with warm water and dishwashing detergent (see Fig. 8). Never use abrasive sponges, to avoid damaging the deep fryer.

When this procedure has been completed, carefully dry all parts, to prevent hot oil from spraying out during operation.

Except for the control unit, cover, basket, removable bowl and casing can be cleaned in the dishwasher.