



Spend a little Live a lot

Great care has gone into the manufacture of this product and it should therefore provide you with years of good service when used correctly. In the event of product failure within it’s intended use over the course of the first 3 years after date of purchase, we will remedy the problem as quickly as possible once it has been brought to our attention. In the unlikely event of such an occurrence, or if you require any information about the product, please contact us via our helpline support services, details of which are to be found both in this manual and on the product itself.



PRODUCED IN CHINA FOR:
ALDI STORES LTD. PO BOX 26, ATHERSTONE
WARWICKSHIRE, CV9 2SH.

ALDI STORES (IRELAND) LTD.
PO BOX 726, NAAS, CO. KILDARE.
visit us at www.aldi.com

AFTER SALES SUPPORT

GB 01924 481053 **GB** customerservice@jaleno.com
 IRE 014968036/014963993 **IRE** kenilworthelec@eircom.net

Model: 6253 Product Code: 72496 10/2016



Spend a little Live a lot

EASY HOME[®] STEAM IRON



User Manual

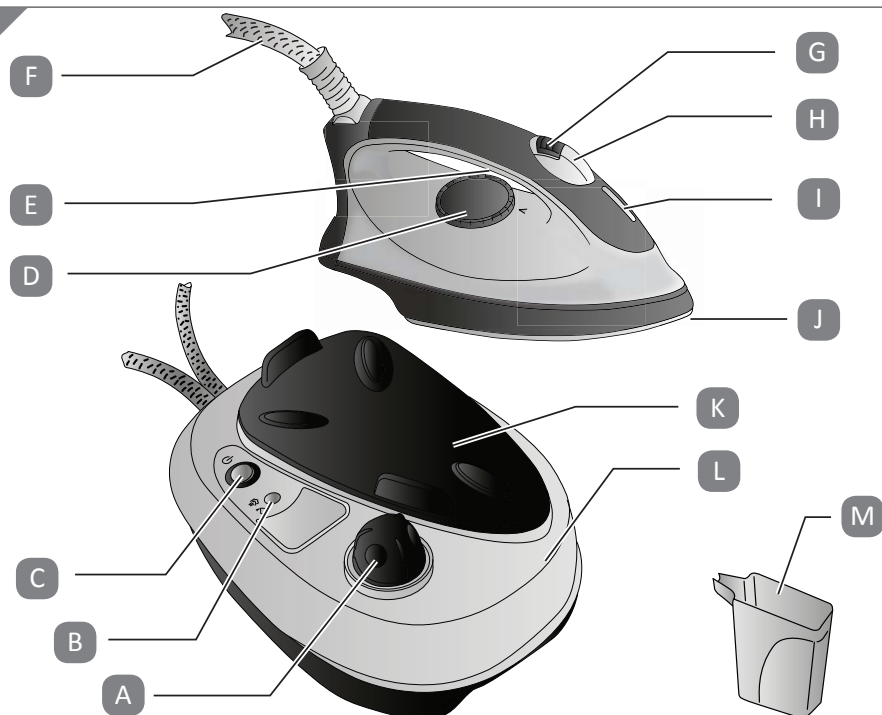
Contents

Intended use.....	1
Residual risks.....	1
Compliance to EU Directives.....	2
Important safeguards.....	2
Instruction for use	5
Vertical ironing	8
Dry iron.....	9
Suggestions.....	9
After ironing	10
Cleaning and maintenance	11
Technical Data	12
Disposal of Waste	12

Description of the appliance

- A Boiler cap
- B Steam ready light
- C On-off switch
- D Thermostat knob
- E Steam button
- F Iron/boiler connection cable
- G Continuous steam lock slider
- H Continous steam button
- I Iron temperature control indicator light
- J Soleplate
- K Iron stand
- L Boiler
- M Measuring cup

1



With regards to this manual

Even if the appliances are made in conformity with the European regulatory specifications in force and therefore all potentially hazardous parts are protected. Carefully read these warnings and use the appliance only for the use it is designed for in order to prevent accidents and damage. Keep this manual close by for future consultation. If you should decide to give this appliance to other people, remember to also include these instructions.

The information in this manual is marked with the following symbols and words that indicate:



Risk of injury

DANGER

Warns the user on the possible risk of serious injury



Risk of electric shock

WARNING

Warns the user on the possible risk of injury or serious property damage



Risk of burns

CAUTION

Warns the user on the possible risk of minor injury



Risk of material damage

NOTE

Warns the user on the possible risk of material damage

This manual is available in electronic format on the website.

INTENDED USE

You can use the appliance for ironing clothing of any kind, curtains and fabrics by following the instructions on the label, dry or steam and also in a vertical position. Iron fabrics using a stable surface both for supporting the fabrics and for setting down the iron when changing the garments.

The appliance has been designed for home use only and must not be used for commercial or industrial purposes.

Any other use of the appliance is not intended by the Manufacturer who does not accept any responsibility for damages of any kind caused by improper use of the appliance itself.

Improper use also results in any form of warranty being forfeited.

RESIDUAL RISKS



WARNING

RISK OF BURNS - The constructive characteristics of the appliance, covered by this publication, does not allow to protect the user from possible contact with the hot plate



of the iron both during the intended use and in the minutes following its switching off. Furthermore, pay close attention when steam is being delivered and do not direct it turn it towards body parts or pets.

WARNING

RISK OF INJURY - After you have turned off the iron and unplugged it from the socket-outlet, let it rest on a stable surface and above all out of the reach of children.

COMPLIANCE TO EU DIRECTIVES

This appliance conforms to the directives 2014/35/EU, EMC 2014/30/EU, 2011/65/EU and to the regulations (EC) No. 1935/2004 of 27/10/2004 regarding material in contact with foods. To dispose of the product correctly according to European Directive 2012/19/EU, please refer to and read the provided information enclosed with the product.

IMPORTANT SAFEGUARDS

READ THESE INSTRUCTIONS BEFORE USE.

ALWAYS KEEP THESE INSTRUCTIONS.

1. We decline any responsibility resulting from misuse or any use other than those covered in this booklet.
2. We suggest you keep the original box and packaging, as our free-of-charge service does not cover any damage resulting from inadequate packaging of the product when this is sent back to an Authorised Service Centre.
3. This appliance can be used by persons who have reduced physical sensory or mental capabilities, or lack of experience and knowledge, only if they are monitored by a responsible person or if they have received and understood the instructions and dangers which may arise during the appliance use.



Danger for children

4. This appliance can be used by children aged 8 years and up if properly monitored or if you have received instructions regarding the appliance

safe use and if they understand the dangers involved.

5. Do not leave the packaging near children because it is potentially dangerous.
6. Children shall not play with the appliance.
7. Cleaning and user maintenance shall not be made by children without supervision.
8. Do not leave the iron and the power cord within the reach of children under the age of 8 years if the iron is connected to the outlet or while it is cooling.
9. Packaging elements must not be left in reach of children as they are potentially hazardous.



Danger of electric shock

10. Make sure that the voltage on the appliance rating plate corresponds to that of your local mains electricity supply.
11. Always connect the iron to an earthed socket.
12. Do not start ironing if your hands are wet or if you are barefoot.
13. Never leave the appliance unattended when connected to the power supply; unplug it after every use.
14. Make sure that the power cord does not come into contact with hot or sharp surfaces.
15. It is not recommended to use this appliance in conjunction with an extension cord.
16. Remove the plug from the power outlet before cleaning or maintenance.
17. Do not immerse the appliance in water or other liquids.
18. The appliance must not be used if it has been dropped, if there are visible signs of damage or leaks of water. Do not use the appliance if the power cord or the plug are damaged, or if the appliance is faulty. To prevent any accident, all repairs, including the replacement of the power cord, must be carried out by an Authorised Service Centre or, in



any case, by qualified personnel



Danger of burns

19. Never try to iron garments being worn.
20. Do not touch the metal parts of the iron when in operation and for several minutes after it is turned off since it could cause burns.
21. Do not aim the jet of steam towards parts of the body or pets.



Danger of damage originating from other causes

22. Never leave the appliance unattended when it is connected to the power supply.
23. Turn on the appliance only when it is in working position.
24. Choose an adequately illuminated and clean room with easily accessible power outlet.
25. During use, rest the appliance onto a horizontal surface. The iron must be put to rest only on its iron support.
26. The appliance must be used and left at rest on a stable surface.



Danger of material damage

27. Place the appliance on a work surface that bears a temperature of at least 90°C (194°F). Do not place the appliance on delicate surfaces.
28. When the iron is hot, do not rest it onto the connecting cable or the power cord. Take special care in ensuring that the cable and the cord do not come into contact with the soleplate when it is hot.
29. Do not pull the power cord to unplug the appliance.
30. Do not pour vinegar, descalers or other scented substances into the boiler; Otherwise, the warranty may be revoked.
31. Do not expose the appliance to atmospheric agents (rain, sun ...).

INSTRUCTION FOR USE

When using the iron for the first time, try it on an old piece of cloth to test that the soleplate and the boiler are perfectly clean.

DANGER

RISK OF ELECTRIC SHOCK - Check the state of the power cable of your iron on a regular basis before using it, and if it is damaged, take it to the service centre closest to you to have it replaced only by specialised personnel.

NOTE: using the appliance with no water in the boiler may damage the pump.

- Remove any labels and protections from the soleplate before using the appliance for the first time.
- Fill up the boiler with water before starting up the appliance.
- Make sure the surface on which the iron support is placed is stable.

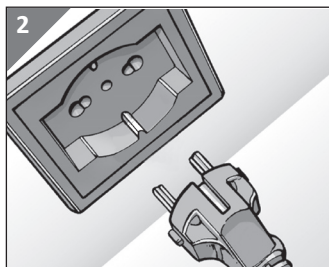
Filling the boiler before use

DANGER

RISK OF ELECTRIC SHOCK - Remove the plug from the power outlet before filling the boiler with water.

NOTE: do not fill the boiler with an excessive amount of water. Do not use sparkling (carbonated) water. Do not use pure demineralised water.

- The product functions with normal tap water.
- Turn the boiler cap counterclockwise.
- To fill the boiler, use the measuring cup supplied. Pour natural mineral water into the boiler until completely filled (Fig. 3).
- Fully screw the boiler cap clockwise, making sure that its stroke is completed.
- If the tap water is particularly hard (higher than 20°f), use a mixture of 50% tap water and 50% demineralized water.
- For a short ironing session, it is not necessary to fill the boiler completely. In fact, less water in the boiler will reduce the waiting time, and consequently electric energy consumption.



Switching on the appliance

NOTE: the appliance may give out a little smoke when used for the first time. This transitory effect is perfectly normal and is due to the fact that some of components have been slightly lubricated.

- Always unwind the power cord before use.
- Connect the appliance to the power supply, ensuring that the voltage indicated on the identification plate corresponds to your local power supply.
- Keep the iron on its grille rest.
- Press the iron/boiler on/off switch.
- Select the desired temperature using the thermostat knob. Wait until the steam ready light turns on to use the steam.
- Before applying a jet of steam to the article to be ironed, release two or three good jets of steam towards the floor to stabilise the steam flow (Fig. 5).

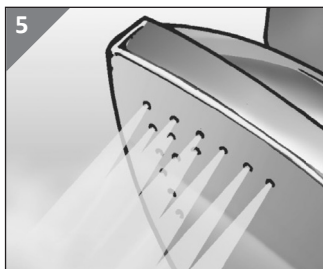
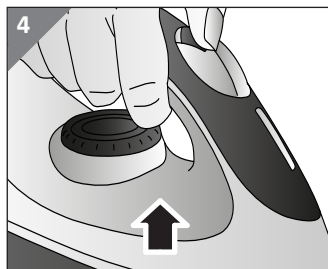
NOTE

RISK OF MATERIAL DAMAGE - Never dispense steam when the iron is placed over the appropriate iron rest grill.

When you must be away even for a short time, always place the iron on the appropriate iron rest grill.

Temperature selection

- First check whether the fabric has a label containing ironing instructions and compare the symbol with the instructions which follow. If there is no label with instructions, but you know the type of material, follow the instructions below.
- Note that the table refers to fabrics not treated with sizing agents or similar products; if they have been, you can also iron at a lower temperature.



Shot of steam

- Set the required ironing temperature using the thermostat knob over the symbol (•••).
- Wait until the iron temperature control light turns off. Wait until the steam ready light turns on.
- When you press the steam button (E) from 3 to 5 seconds, an intense jet of steam will be dispensed when the button is released.

NOTE: water might get out from the steam holes if you press the steam button before the appliance has reached the best temperature or before the iron is hot.

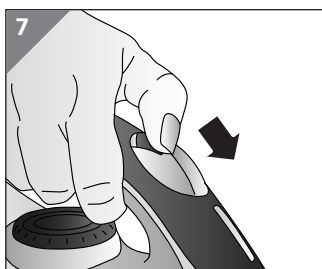
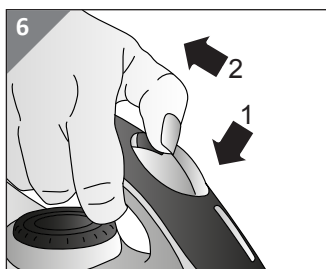
NOTE

RISK OF MATERIAL DAMAGE - Never dispense steam when the iron is placed on the iron rest grill.

Do not operate the steam dispensing button uninterruptedly for more than 30 seconds: water droplets can come out from the steam holes of the iron plate.

Continuous steam

- Set the required ironing temperature using the thermostat knob over the symbol (•••).
- Wait until the iron temperature control light turns off. Wait until the steam ready light turns on.
- Press the steam button (H) and move the continuous steam lock slider towards the handle (Fig. 6). The cursor will lock the steam button (H) causing the output of a continuous and constant steam jet.
- To release the steam button (H) and stop the continuous jet push the lock slider forward (Fig. 7).



Filling the boiler during use

WARNING

RISK OF ELECTRIC SHOCK - Never unscrew the cap of the boiler while the appliance is connected to the mains or when there is still pressure inside.

- Position the appliance on a stable surface.
- Press the on/off button (C) to turn off the appliance.
- Remove the power cable from the socket-outlet;
- Take the iron and press the steam button. Let all the residual steam come out.
- Store the iron on its iron stand grid.
- Let the appliance to cool down for a few minutes.
- Very carefully, turn the boiler cap counterclockwise. Wait until any hiss of steam stops. Now it is possible to fully unscrew the cap.
- The product functions with normal tap water. To fill the boiler, use the measuring cup supplied. Pour natural mineral water into the boiler until completely filled (Fig. 3).

WARNING

RISK OF BURNS - Add the water to the boiler very slowly. In this way you will avoid splatters of hot water or steam from the boiler from coming unexpectedly out of the hole. Keep your face away from the hole.

- Fully screw the boiler cap clockwise, making sure that its stroke is completed.

NOTE: if the iron is not used for a long time (several weeks) before ironing it is advisable to keep it in a horizontal position and operate the steam button for about 30 seconds in order to clean the internal steam tubes

VERTICAL IRONING

You can use the jet of continuous steam for ironing hanging fabrics. This special ironing procedure serves to remove creases from curtains, fabrics, etc.

- Set the required ironing temperature using the thermostat knob over the symbol (•••).
- Put the curtain or fabric in the position you want to iron it vertically and press the steam button.

WARNING

RISK OF BURNS - Do not iron fabrics held by other people.

DRY IRON

- Connect the appliance to the mains.
- Switch on the appliance.
- Adjust the thermostat knob to the desired temperature.





NOTE: do not press the steam button.

SUGGESTIONS

Divide the articles to be ironed according to the types of material: wool with wool, cotton with cotton, etc...

Because the iron heats up much more quickly than it cools down, it is advisable to start with those fabrics which require lower temperatures and move on to those which require progressively higher temperatures.

If the material is made up of more than one type of fibre, always set the temperature to the fibre which requires less heat. For example, if the material is made up of 70% synthetics and 30% cotton, set the temperature control to position (●) (see table) without steam, that is, the temperature for synthetic fabrics.

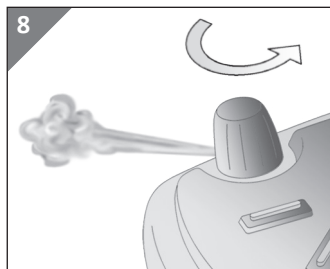
Label Ironing instructions	Kind of fabric	Thermostat
	Synthetic fabrics: Acetate Acrylic Viscose Poliammide (Nylon) Viscose (Rayon) Silk	●
	Wool	● ●
	Cotton Linen	● ● ●
	The mark on the label means do not iron	

If you do not know the composition of the article to be ironed, choose a part of the article which will not be seen. Do a test ironing on this part to establish the appropriate temperature (always start with a relatively low temperature and work up until the ideal temperature is reached).

Pure (100%) wool articles can be ironed with the iron set to one of the steam positions. To avoid pure wool, silk and synthetic materials becoming shiny, it makes good sense to iron them on the reverse side. For other materials, especially velvet, which can become shiny very easily, cover them with a cloth and iron in one direction only, using light pressure. The iron must be kept constantly moving over the fabric.

AFTER IRONING

- Press the on/off button (C) to turn off the appliance.
- With the power plug inserted into the outlet, the appliance is powered: press the steam button (H) and remove the residual pressure in the boiler.
- Remove the power cable from the socket-outlet.
- Wait few minutes to make the appliance cool down.
- Very carefully, turn the boiler cap counterclockwise.
- Wait until any hiss of steam stops.
- Now it is possible to fully unscrew the cap (Fig. 8).
- Let the iron cool down on its stand, taking care not to touch the power cables and connection with the hot parts of the appliance.
- Completely empty the boiler so as to prevent that the accumulation of water in the boiler favours the formation of scale.
- Put the appliance back on top of a stable surface and out of the reach of children.



CLEANING AND MAINTENANCE

DANGER

RISK OF ELECTRIC SHOCK - Never immerse the appliance in water or other liquids.

WARNING

RISK OF BURNS - Always unplug the appliance before cleaning it. Let the iron cool on the dedicated iron stand grid.

NOTE

RISK OF MATERIAL DAMAGE - Do not use abrasives for cleaning the soleplate. Try and keep the soleplate smooth: avoid contact with metal objects.

Never use solvents which may damage the plastic parts.

- Clean plastic parts with a damp, non-abrasive cloth and dry them with a dry cloth.

Cleaning the boiler

- Remove the power cable from the socket-outlet;
- Let the appliance to cool down for a few minutes.
- Very carefully, turn the boiler cap counterclockwise. Wait until any hiss of steam stops.
- Now it is possible to fully unscrew the cap.
- To fill the boiler, use the measuring cup supplied. Pour a bit of cool tap water in the boiler (Fig. 3). Screw the boiler cap.
- Shake the boiler to remove scale residues formed inside.
- Unscrew the boiler cap and remove the water. Repeat the operation until water comes out clear and clean.
- Completely empty the boiler so as to prevent that the accumulation of water in the boiler favours the formation of scale.
- Put the appliance back on top of a stable surface and out of the reach of children.

NOTE

RISK OF MATERIAL DAMAGE - Clean the boiler at least every two months so as to eliminate any residue of lime that could jeopardize proper operation of the appliance.

The warranty does not cover damage caused by clogging due to lime.

TECHNICAL DATA

Nominal voltage:	220-240V
Nominal frequency:	50/60Hz
Nominal power:	2200-2500W
Protection Class:	I (This appliance must be earthed.)

DISPOSAL OF WASTE



The product packaging is made of recyclable materials. The packaging material can be taken to public recycling collection points.



Old appliances do not belong in household waste! To comply with current legislation, old appliances, having reached the end of their useful lives, should be taken to a disposal facility where they can be sorted.

In this way, any valuable material contained in the old appliances can be recycled and the environment protected. Responsible local authorities or their waste disposal operators can provide further information.

EASY
HOME®

WARRANTY CARD

Steam Iron

Your personal details:

Name _____

Address _____

_____ _____ Email _____

Date of purchase* _____

* We recommend you keep the receipt with this warranty card

Location of purchase _____

Description of malfunction:



Return your completed warranty card to:

Jaleno Europe Limited
Roe Head House
Far Common Road
Mirfield
West Yorkshire
WF14 0DQ
EnglandKenilworth Electrical
253 Harolds Cross Road,
Dublin, Ireland
kenilworthelec@eircom.net

AFTER SALES SUPPORT



GB 01924 481053

IRE 014968036 / 014963993



GB customerservice@jaleno.com

IRE kenilworthelec@eircom.net

MODEL: 6253 PRODUCT CODE: 72496, 10/2016

3

YEAR WARRANTY



Warranty conditions

Dear Customer,

The **ALDI warranty** offers you extensive benefits in addition to your statutory rights:

Warranty period: **3 years from date of purchase.**
 6 months for wear parts and consumables under
 normal and proper conditions of use
 (e.g. rechargeable batteries).

Costs: Free repair/exchange or refund.
 No transport costs.

Hotline: No additional charge for fixed network calls.

ADVICE: Please contact our service hotline by phone, e-mail or fax before sending in the device. This allows us to provide support in the event of possible operator errors.

In order to make a claim under the warranty, please send us:

- the original receipt and the warranty card properly completed.
- the product with all components included in the packaging.

The warranty does not cover damage caused by:

- **Accident or unanticipated events** (e.g. lightning, water, fire).
- **Improper use or transport.**
- **Disregard of the safety and maintenance instructions.**
- **Other improper treatment or modification.**

After the expiry of the warranty period, you still have the possibility to have your product repaired at your own expense. If the repair or the estimate of costs is not free of charge you will be informed accordingly in advance.

This warranty does not affect your statutory rights.