



# De'Longhi Waste Disposer

## **RotoRaptor™** WD1000

1.25 Horse Power (1000 Watt)  
Domestic Waste Disposal



## USER GUIDE

Please read this user guide carefully and retain for future reference

# Contents

Features.....	02
User Guide.....	03
De'Longhi's Safety Precautions.....	04
Waste Disposer Precautions.....	05
Operating Instructions.....	06
The Do's and Don'ts of Waste Disposing.....	07
Cleaning and Troubleshooting.....	08
Cleaning your waste disposer	
Releasing a jam	
Resetting following an overheat	
Installation Guide.....	11
Before You Begin.....	12
Tools you may need	
Installation dimensions	
Remove existing disposer	
Disconnect sink drain	
Installing Your Waste Disposer.....	14
Disassemble new disposer mounting assembly	
Install flange in sink hole	
Mounting assembly to flange	
Clean sink drain line	
Connect disposer to electrical supply	
Switch installation	
Connect disposer to mounting assembly	
Attach discharge pipe to waste drain line	
5 Year Warranty Information.....	20

## 1.25 Horse Power (1000 Watt)

The high powered 1.25 Horse Power (1000 Watt) PMDC motor is manufactured to De'Longhi's specifications ensuring its reliability and superior performance.

## 5 Year Warranty

The De'Longhi Waste Disposer WD1000 has a full 5 Year Warranty covering faults resulting from the manufacturing processes or material defects.

## Quiet, 3 Stage Noise Absorption

Sound created during the disposal process is absorbed within an insulation layer and reduced further with the splash baffle and outer housing ensuring the WD1000 remains quiet while disposing of your kitchen waste.

## Tested to 5000 Cycles

To ensure that the WD1000 meets the highest standards of performance and safety its design and manufacture is stringently factory tested.

## Built in Air Switch

Activating your WD1000 is as easy as pressing a button, the bench top Air Switch ensures convenience and ease when disposing of unwanted mess.

## Efficient Load Sensing Motor

The PMDC motor provides only the correct amount of power for the required job ensuring efficient power usage no matter what the task.

## RotoRaptor™ Fine Grind System

The RotoRaptor™ combines slanted stainless steel cutting teeth with powerful raptor tails and claws to tear through your kitchen waste, ensuring that the WD1000 is the most voracious food waste disposer on the market.

## Easy Installation

Quality design and manufacture of the WD1000 ensures that it can be installed quickly and easily into new and existing sinks in most kitchens.

## Stainless Steel Grind System and Chamber

The grind system and chamber are constructed from high grade stainless steel to provide a long trouble free working life.

## Thermal Cut Off

If the disposer is in operation for long periods of time, the thermal cut off system will halt the WD1000 before any damage can occur to the internal components. Once cooled the WD1000 can be easily reset ready for use.

## Continuous Feed

The WD1000 allows waste to be continuously fed into the grinding chamber ensuring that any amount of waste is disposed off quickly and easily.

De'Longhi's Safety Precautions.....	04
Waste Disposer Precautions.....	05
Operating Instructions.....	06
The Do's and Don'ts of Waste Disposing.....	07
Cleaning and Troubleshooting.....	08
Cleaning your waste disposer.....	08
Releasing a jam.....	08
Resetting following an overheat .....	09

## De'Longhi's Safety Precautions

De'Longhi pride themselves on their innovative range of the highest quality consumer products.

De'Longhi ensures all of its products are 100% safe through quality design and manufacture. All products meet or exceed stringent laboratory-tested safety requirements, as well as complying with Australian Safety Specifications.

It is necessary for anyone using an electrical appliance to be safety conscious. The following precautions are essential for the safe use of an electrical appliance:

Carefully read all of the instructions provided with your appliance.

- Always turn the power off at the power outlet before you insert or remove a plug. Remove by grasping the plug, do not pull on the cord.
- Do not use your appliance with an extension cord unless this cord has been checked and tested by a qualified technician or service person.
- Do not install or use any electrical appliance if the AC supply cord is damaged or worn, have it replaced by a De'Longhi qualified technician or service centre.
- Always use your appliance from a power outlet of the voltage (A.C. only) marked on the appliance.
- Do not use an appliance for any purpose other than its intended use.
- Do not attempt to repair an electrical appliance. Return a damaged or malfunctioning appliance to a qualified service centre for adjustment or repair if required.
- If the supply cord is damaged. It must be replaced by the manufacturer or its service agent or a similarly qualified person in order to avoid a hazard.
- Do not immerse appliance in water or any other liquid unless recommended.
- The appliance is not intended for use by persons (including children) with reduced physical sensory or mental capabilities, or lack of experience and knowledge, unless they have been given supervision or instruction concerning use of the appliance by a responsible person for their safety
- Young children should be supervised to ensure that they do not play with the appliance.

## Waste Disposer Safety Precautions

### IMPORTANT SAFETY INSTRUCTIONS - READ ALL INSTRUCTIONS BEFORE USING, AND SAVE FOR FUTURE REFERENCE.

#### INSTRUCTIONS PERTAINING TO A RISK OF FIRE, ELECTRIC SHOCK, OR INJURY TO PERSONS

When using electric appliances, basic precautions should always be followed, including:

- Read and understand all instructions before using the appliance.
- This appliance is not intended for use while unattended.
- To reduce the risk of injury, close supervision is required when an appliance is used near children.
- Do not put fingers or hands into a waste disposer.
- Turn the power switch to the off position and disconnect the power supply before attempting to clear a jam, removing an object from the disposer, or pressing reset button.
- Use long-handled tongs or pliers when attempting to remove objects from a waste disposer.
- To reduce the risk of injury, do not use the sink installed with the disposer for purposes other than food preparation (such as baby bathing or hair washing).

- This product is designed to dispose of normal household food waste. Introducing materials other than food waste into disposer may cause personal injury and/or property damage.
- To reduce the risk of injury do not put the following into a waste disposer:
  - Clam or oyster shells
  - Caustic drain cleaners or similar products
  - Glass, china, or plastic
  - Large (whole) bones
  - Metal (such as bottle caps, tin cans, or utensils)
  - Hot grease or other hot liquids.
- Do not dispose of the following in the disposer:
  - Paints, solvents, household cleaners and chemicals
  - Automotive fluids
  - Plastic wrap
  - Whole corn husks
- Replace sink baffle when worn to help prevent entry or ejection of material and water.

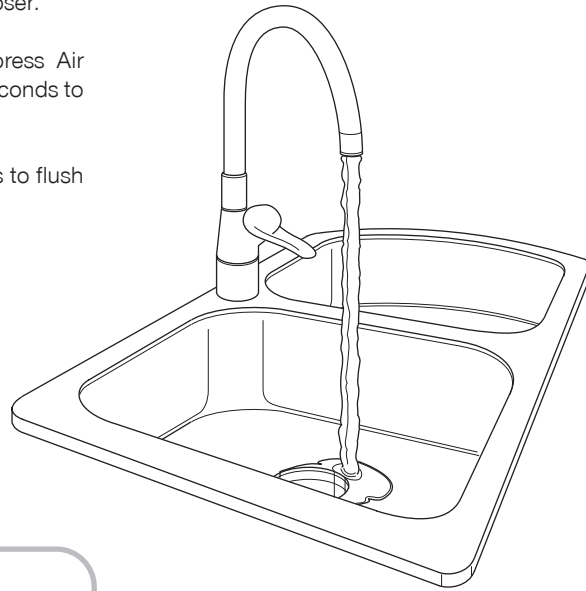
#### FIRE HAZARD

Do not store flammable items such as rags, paper, or aerosol cans near disposer.

Do not store or use gasoline or other flammable vapors and liquids in vicinity of disposer.

## To operate your waste disposer

1. Remove stopper from sink opening and run water. Water should be cold, and flow should be strong.
2. Slowly insert food waste into disposer, and position stopper to minimize potential ejection of material while grinding.
3. Press Air Switch (or operate Wall Switch) for 1-2 seconds to start the disposer.
4. After grinding all food waste, press Air Switch (or Wall Switch) for 1-2 seconds to stop the disposer.
5. Run water for at least 15 seconds to flush and aid draining.



## WARNING

In the case of a sudden power outage during operation of the disposer, please be sure to turn the unit "off" by pressing the Air Switch until you hear an audible "click" or set the Wall Switch to the "off" position. Please then unplug the disposer from the power supply to ensure the unit is not on when power resumes.

## IN CASE OF EMERGENCY

Press Air Switch (or set Wall Switch to off) to stop the unit, or turn electrical power off at fuse box or circuit breaker.

Your De'Longhi Waste Disposer is designed to dispose of food waste including small bones, fruit and vegetable waste, egg shells and coffee grounds.

Large pieces of food waste like melon rinds should be cut into smaller pieces before being put into the disposer.

DO NOT put items like glass, china, metal, tin cans, bottle caps or oyster and clam shells into the disposer. These items belong in the trash; damage may result to both disposer and drain system if this type of trash is placed in the disposer.

## Do...

- Do turn on a moderate to strong flow of cold water before turning on the disposer. Continue running cold water for at least 15 seconds after grinding is completed to flush the drain line.
- Do grind hard materials such as small bones, fruit pits, and ice. The particles scour the inside of the grind chamber.
- Do grind citrus fruit peels to freshen up the drain.
- Do use a disposer cleaner, degreaser, or deodorizer as necessary to relieve objectionable odors caused by grease build-up.

## Don't...

- Don't pour grease or fat down your disposer, or down any drain. It can build up in pipes and cause drain blockages. Place grease in a jar or can and dispose of in the trash.
- Don't use hot water when running the disposer. You may drain hot water into the disposer between grinding periods.
- Don't fill disposer with a large mass of vegetable peel all at once. Instead, turn the water and disposer on, then gradually feed the peel into the disposer.
- Don't grind extremely fibrous materials like corn-husks, artichokes, etc., to avoid possible drain blockage.
- Don't turn off disposer until grinding is completed. You should only hear the sound of the motor and water.
- Don't be alarmed if a brown discoloration appears on the face of the grinding disc; this is normal. It is only a superficial discoloration and will not affect the life or performance of the disposer.

## Cleaning your waste disposer

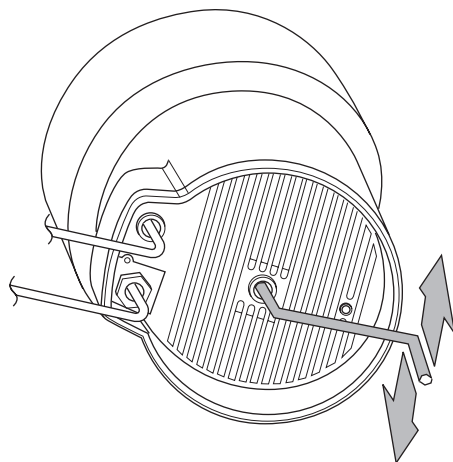
Odor emitting from the disposer is usually a sign of grease and food build up; over time, food waste may remain in the grinding chamber and sink baffle. Therefore, the food waste disposer should be regularly cleaned and maintained.

1. TURN OFF DISPOSER by air switch or wall switch and disconnect power supply.
2. Reach through sink opening and clean underside of sink baffle and inside upper lip of grind chamber with a scouring pad.
3. Place stopper in sink opening and fill sink halfway with a solution of detergent and water.
4. Mix  $\frac{1}{4}$  cup baking soda with the water. Remove stopper from sink and turn on disposer to wash away loose particles.

## Releasing a jam

If motor stops while disposer is operating, disposer may be jammed.

1. TURN OFF DISPOSER by air switch or wall switch and disconnect power supply.
2. Turn off the water.
3. Insert one end of wrench into centre hole on bottom of disposer. Work wrench back and forth until it turns one full revolution. Remove wrench.
4. Reach into disposer with long-handled tongs and remove object(s). Allow disposer motor to cool for 3-5 minutes, then remove the rubber switch cover to check the red reset button has released. If so gently push red reset button.
5. Connect the power supply and turn on the water.
6. Turn on the disposer by air switch or wall switch.
7. If motor remains inoperative, check service panel for tripped circuit breakers or blown fuses.



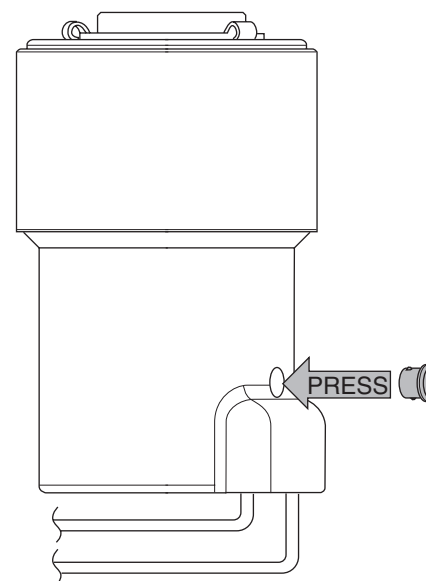
## Resetting following a thermal cut off

If the disposer is in operation for a long time, the disposer will automatically be stopped by the thermal cut off function to prevent damage to the internal mechanism.

If this is the case, the disposer needs to cool down for 2.5 hours at room temperature.

1. TURN OFF DISPOSER by air switch or wall switch and disconnect power supply.
2. Once the disposer has cooled, remove the rubber switch cover and gently push the red reset button on disposer side to reset the disposer.
3. Then connect the power supply. Your disposer should now be ready to operate.

IF THE DISPOSER REMAINS INOPERABLE, CALL THE DE'LONGHI CONSUMER HELPLINE.



## Consumer Help

If you have any concerns or questions regarding the performance or use of your appliance, please visit:  
[www.delonghi.com.au](http://www.delonghi.com.au)  
 or  
[www.delonghi.co.nz](http://www.delonghi.co.nz)  
 or contact the De'Longhi Consumer Helpline.

## Australia

Phone: 1800 126 659  
 Fax: 1800 706 932

## New Zealand

Phone: 0508 200 300  
 Fax: 0508 200 301

# Installation Contents

Before You Begin.....	12
Tools you may need.....	12
Installation dimensions.....	12
Remove existing disposer.....	13
Disconnect sink drain.....	13
Installing Your Waste Disposer.....	14
Disassemble new disposer mounting assembly.....	14
Install flange in sink hole.....	14
Mounting assembly to flange.....	15
Clean sink drain line.....	15
Connect disposer to electrical supply.....	15
Switch installation.....	16
Connect disposer to mounting assembly.....	18
Attach discharge pipe to waste drain line.....	19

## Before You Begin

All installation work has to be performed by Qualified Trades People.

For general enquiries free call De'Longhi:

### Australia

1800 126 659

### New Zealand

0508 200 300

### Tools you may need

Phillips and Flathead "Slotted" Screwdrivers  
Adjustable Pliers

Hammer

Drain Auger

10 mm (3/8") Electrical Clamp Connector

Wire Nuts (2)

Pipe Wrench

40 mm (1 1/2") Drain Trap

Water Hose Clamp

Dishwasher Drain Connection Kit

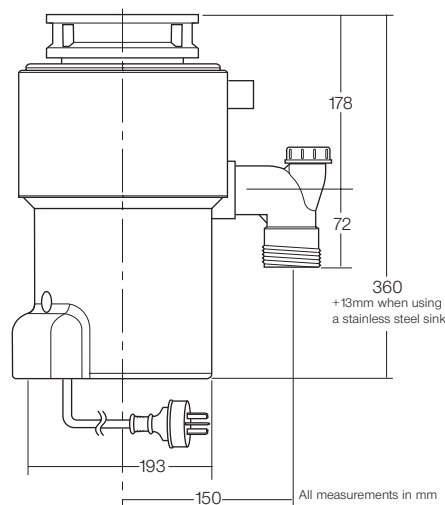
Air Gap

Drain Tube Extension

Hacksaw

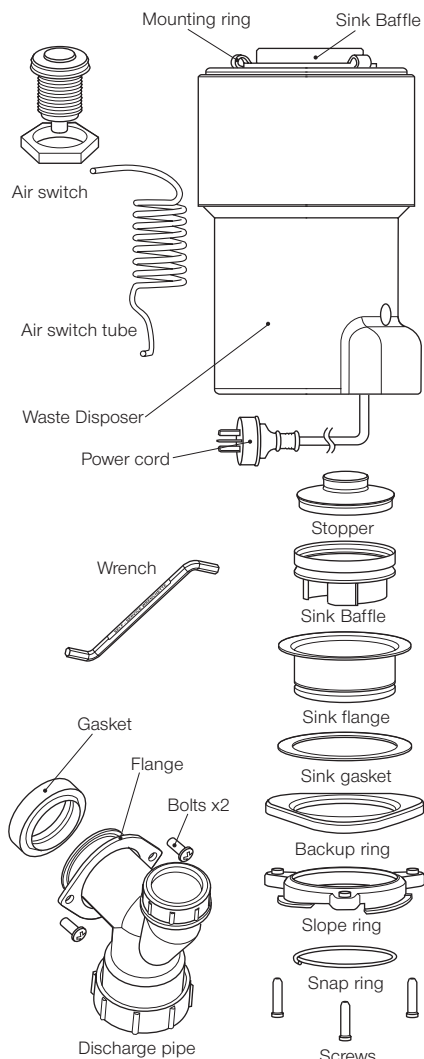
Beveled Washer

### Installation Dimensions



READ THROUGH THE INSTRUCTIONS IN THIS MANUAL COMPLETELY AND CAREFULLY BEFORE INSTALLING THE DISPOSER.

Determine which tools, materials and accessories you may need before you begin. Make sure you have all necessary disposer parts before beginning the installation.



## Before You Begin

### WARNING

If uninstalling an existing waste disposer turn off electrical power at a fuse box or circuit breaker, and make sure disposer is grounded. Improper connection can result in electric shock.

Do not position your head or body under disposer, as the unit could fall during removal or installation

### Remove existing disposer

SKIP THIS STEP FOR FIRST TIME INSTALLATION

1. Turn off electrical power prior to disconnecting the old disposer.
2. Unplug the old unit from the power supply.
3. If applicable, disassemble the air switch from the unit by pulling out the air switch tube.
4. Disconnect drain trap from disposer waste discharge pipe with adjustable pliers. Disconnect dishwasher drain connection as well, if applicable.
5. Support the unit with one hand and insert end of wrench or screwdriver into right side of one mounting lug on lower mounting ring. Lift disposer slightly and loosen lower mounting ring by pushing or pulling wrench or screwdriver to the left until disposer is free from mounting assembly. NOTE: DISPOSER MAY BE HEAVY PROVIDE PROPER SUPPORT
6. Using screwdriver, loosen mounting screws and pry off snap ring. Remove old mounting assembly. (Some mounting assemblies may require additional tools to remove.)
7. Push old sink flange up through sink hole and clean sink flange area of any rust or other remaining residue.

### Disconnect sink drain

FOR NEW INSTALLATION ONLY

1. Loosen nut at top of drain trap with pipe wrench.
2. Loosen nut at top of extension pipe. Remove extension pipe.
3. Loosen nut at base of sink flange. If nut is corroded or too tight, apply lubricant.
4. Push sink flange up through sink hole and remove.
5. Clean sink flange area of any rust or other remaining residue.

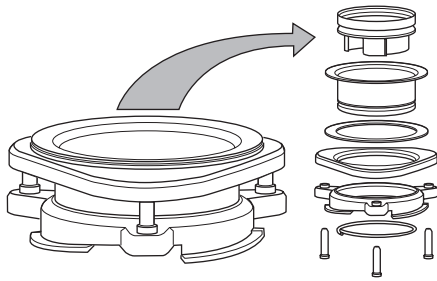


# Installing Your Waste Disposer

## STEP 01

### Disassemble new disposer mounting assembly

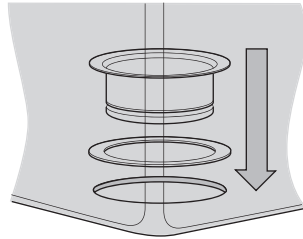
1. Turn mounting assembly over and loosen three mounting screws until snap ring is accessible.
2. Use screwdriver to pry off snap ring from sink flange. Mounting assembly will now come apart.



## STEP 02

### Install flange in sink hole

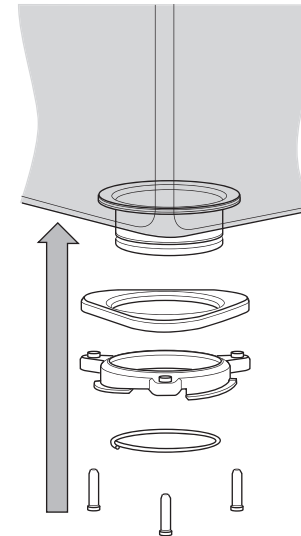
1. Insert sink flange into sink gasket.
2. Insert sink flange with sink gasket component into the sink.



## STEP 03

### Mounting assembly to sink flange

1. Working from underneath sink, slip the metal backup ring, flat side up, over sink flange.
2. Hold backup ring in place as you slip tapered ring over sink flange so it settles against backup ring.
3. Hold backup ring and slope ring tight against sink bottom. Slide snap ring onto sink flange until it pops into groove on flange.
4. Tighten three mounting screws into sink until mounting assembly is seated tightly and evenly against sink.



HINT: Placing a thick, wide rubber band around the sink flange (above the snap ring groove) may help hold parts in place while installing snap ring. Remember to remove rubber band after snap ring is installed.

## STEP 04

### Clean sink drain line

Failure to clean sink drain line may result in drain line blockage.

1. Remove drain trap.
2. Flush the piping with water to clear away all residue and waste in horizontal drain line.

## ELECTRIC SHOCK RISK

Disconnect power before installing or servicing disposer.

Improper connection of the equipment grounding conductor may create an electric shock risk. Check with a qualified electrician or serviceman first if you are in any doubt as to whether the appliance is properly grounded.

DO NOT modify the plug provided with the appliance; if the plug will not fit the outlet; have a suitable outlet installed by a qualified electrician.

This unit is equipped with a three-prong, grounded plug; plug must be inserted into a three-holed grounded outlet. The appropriate outlet must be properly installed and grounded in accordance with all local codes and ordinances.

Power plug must be accessible after installation.

## GROUNDING INSTRUCTIONS FOR CORDED UNITS

This appliance must be grounded. Should a malfunction or breakdown occur, grounding provides a path of least resistance for the electric current, reducing the risk of electric shock.

The cord on this unit has an equipment-grounding conductor and a grounding plug to be plugged into an appropriate outlet. The outlet used must be properly installed and grounded in accordance with all local codes and ordinances.

## STEP 06

### Connect disposer to electrical supply

Connect electrical power to your disposer by plugging the power cord directly into power outlet.

## STEP 07

### Switch Installation

There are two types of on/off switches available for installation. Install the option that best suits how you will use your waste disposer.

**Air Switch:** This installation provides a benchtop switch that allows the waste disposer to be controlled with a single press.

**Wall Switch:** This installation does not use the Air Switch and requires you to control the waste disposer with a regular wall switch.

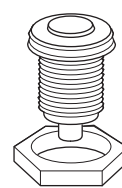
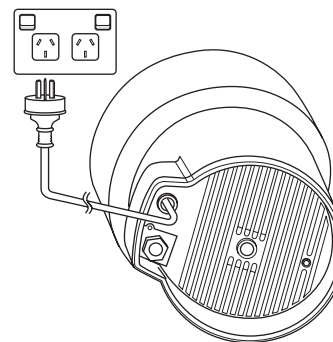
### Air Switch Installation (regular)

The air switch kit includes:

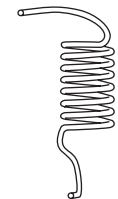
Push button  
PVC air switch tube

1. Make a hole (34.5 mm in diameter) in an area of kitchen counter convenient for a push button, or for some sink units, remove the cap on the pre-existing switch hole.
2. Fit the push button bellows in the prepared hole and screw the nut up underneath the countertop.
3. Plug the PVC air switch tube into the bottom of the push button bellows, then plug other end of tube into the air switch spout located at the bottom of the disposer.

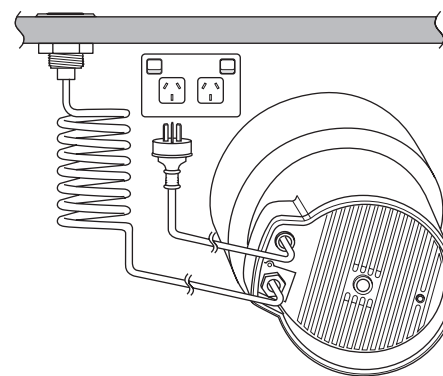
NOTE: Do not use a wrench to tighten the Air Switch; it may damage the plastic parts.



Air switch



Air switch tube



## Wall Switch Installation

1. Air Switch can be disabled if Wall Switch operation is preferred. The disposer is shipped with switch in the "off" position. Attach air switch actuator to the air switch spout located on the bottom of the disposer, using the tube provided.
2. Depress Air Switch once until you hear the switch audibly "click".
3. Remove and discard the Air Switch actuator and tube.
4. The disposer may now be activated by a Wall Switch.

## WARNING

If you are not familiar with mechanical and electrical connections, the Power Cord and Air Switch should be installed and replaced by a qualified technician.

# Installing Your Waste Disposer

## WARNING

Do not position your head or body under disposer, as the unit could fall during installation.

## STEP 08

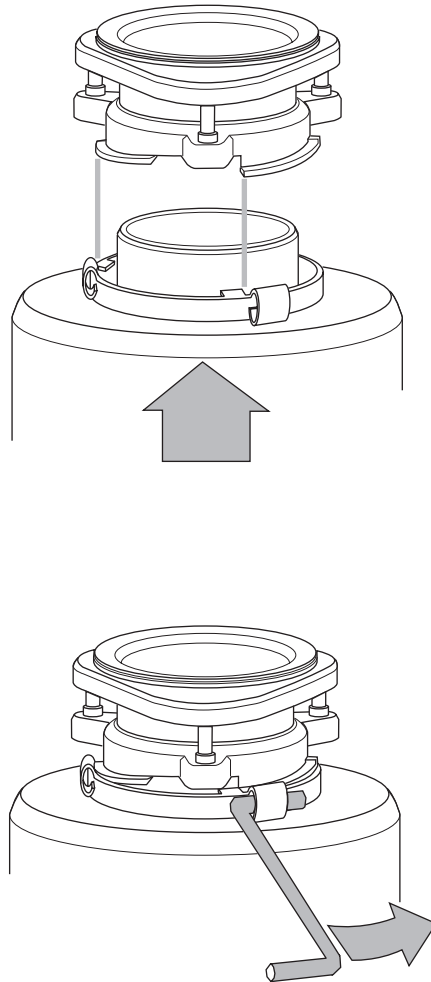
### Connect disposer to mounting assembly

1. Position disposer so that the three mounting tabs are aligned to slide over slope ring rails.
2. Lift disposer, insert top end (sink baffle) into mounting assembly, and turn lower mounting ring to the right (with wrench or screwdriver) until mounting tabs slide completely past locking ridges on the slope ring rails.

MAKE SURE ALL THREE MOUNTING TABS ARE LOCKED SECURELY OVER RIDGES.

Disposer will now hang on its own.

NOTE: Make sure to push sink baffle into sink opening with "cupped" side up.



## STEP 09

### Attach discharge pipe to waste drain line

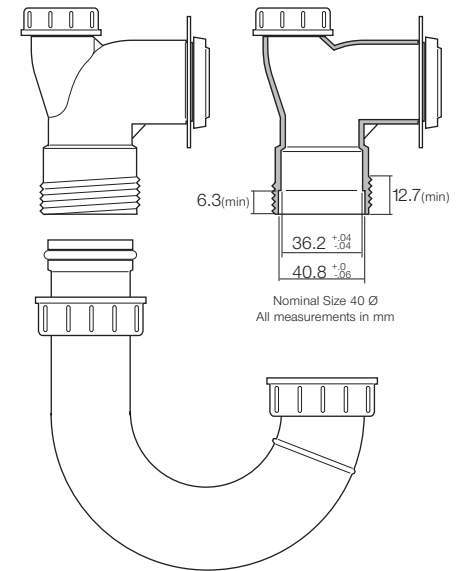
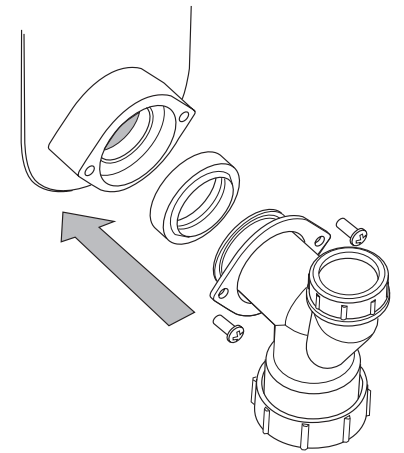
Do not use thread sealants or pipe dope; they may impair or harm the disposer and/or cause property damage.

### Two-bolt discharge pipe installation

If replacing existing disposer, remove and discard existing discharge pipe and gasket. (Unit will not seal properly with old discharge pipe.)

1. Slide metal flange over discharge pipe.
2. Insert rubber gasket into discharge outlet. Secure metal flange and discharge pipe to disposer with two bolts.
3. Rotate disposer unit and align discharge pipe with drain trap. Do not pull or bend discharge pipe to drain trap. If discharge pipe is too long, cut off as much of pipe as necessary with a hacksaw (make sure cut is straight and clean.) If discharge pipe is too short, you can purchase an extension from a hardware store. Note: Disposer must remain in vertical position to prevent vibration.
4. Place trap nut, then beveled washer (supplied with unit) against bottom of discharge pipe and hand tighten on drain trap (Do not over tighten trap nut). If you have a double sink, use a separate drain trap for each side.
5. Lower mounting ring must be securely locked over mounting flange ridges.

NOTE: If using sink overflow, it should be connected to the overflow inlet on the tailpipe. Remove the plug by unscrewing the connector cap to connect the overflow



NOTE: Plumbing and drainage installation of this appliance must comply with AS/NZS 3500.2.

The product and installation of this waste disposal may require the approval of the relevant regulators and/or the sewerage system operator.

## 5 Year Warranty Information

The De'Longhi Waste Disposer WD1000 is warranted against faults resulting from manufacturing or material defects. The warranty period for normal domestic installation and use is five years from the date of installation in your home. In non-domestic use De'Longhi limits the voluntary warranty to 6 months.

De'Longhi undertakes to repair or replace the Waste Disposer WD1000 at our discretion if the product is found to be defective due to a manufacturing fault during the warranty period.

Should De'Longhi determine the waste disposer should be replaced rather than repaired the warranty on the replacement unit will be limited to the unexpired term of the original warranty.

Only purchase De'Longhi replacement parts for the De'Longhi Waste disposer. Ensure that the all parts match the correct model and type number.

This warranty excludes any damage caused by misuse, neglect, shipping accident, or incorrect installation. Normal wear and tear is also expressly excluded. The warranty claim is void if no fault is found with the product or if work is carried out by anyone other than an authorized De'Longhi Service Agent.

In New Zealand, this warranty is additional to the conditions and guarantees of the Consumers Guarantees Act (1993)

In Australia, this warranty is additional to the conditions and guarantees which are mandatory as implied under the Trade Practices Act 1974 and State and Territory legislation.

If your disposer does not operate, follow these steps:

1. Check the CLEANING AND TROUBLESHOOTING section of this guide.
2. Make sure that the disposer is connected to electrical power, and the fuses or circuit breakers are in working order.
3. Re-read the instruction book to ensure that you are operating the disposer correctly.
4. Contact De'Longhi or an Authorized Service Agent.

### How to contact us about a warranty claim

To talk to a De'Longhi representative for further warranty or product information please call the number in your country:

#### Australia

[www.delonghi.com.au](http://www.delonghi.com.au)  
Phone: 1800 126 659

#### New Zealand

[www.delonghi.co.nz](http://www.delonghi.co.nz)  
Phone: 0508 200 300

NOTE: Warranty is determined by unit serial number and date of installation.

**PLEASE KEEP YOUR PURCHASE  
RECIEPT TO AUTHENTICATE YOUR  
WARRANTY**

All installation work has to be performed by Qualified Trades People.

For general enquiries free call De'Longhi:

**Australia**  
1800 126 659

**New Zealand**  
0508 200 300



## Consumer Helpline

### **Australia**

Phone: 1800 126 659

Fax: 1800 007 289

### **New Zealand**

Phone: 0508 200 300

Fax: 0508 200 301

[www.delonghi.com.au](http://www.delonghi.com.au)

[www.delonghi.co.nz](http://www.delonghi.co.nz)

Distributed by De'Longhi Australia Pty Ltd.

ABN 49 104 012 857

P.O. Box 4156 Millperra BC, NSW 1891

Distributed by De'Longhi New Zealand Ltd.

P.O. Box 58-056 Greenmount, Auckland



is a registered Trademark  
of De'Longhi Australia Pty Ltd.  
ABN 49 104 012 857.