



# De'Longhi Wine Cabinet

Temperature Controlled Wine Storage

Single Zone Models

DEWC30S

DEWC54S

DEWC166S



## USER GUIDE

Please read this user guide carefully and retain for future reference

This User Guide covers Models:

**DEWC30S**

**DEWC54S**

**DEWC166S**

# Contents

- De’Longhi Safety Precautions..... 03
- Wine Cabinet Safety Precautions..... 04
- Parts and Features..... 06
  - DEWC30S
  - DEWC54S
  - DEWC166S
- Installation Safety Precautions..... 08
- Installation..... 09
  - Before installing your Wine Cabinet
  - Quick installation
  - Recessed installation
  - Attaching the door handle
- Using Your Wine Cabinet..... 12
  - On / Off power
  - Setting the temperature control
  - Storing wines
  - Storage capacity
  - Interior light
  - Door lock
- Care and cleaning..... 14
  - Cleaning your Wine Cabinet
  - Energy saving tips
  - Power failure
  - Going on Vacation
  - Moving your Wine Cabinet
- Troubleshooting..... 15
- Customising your Wine Cabinet..... 16
  - Reversing the door swing
  - Shelves
- Help Us Help You..... 19
- Warranty Information..... 20

# Features

- Single zone
- Wooden telescopic shelves
- Stainless steel fascia's
- Stainless steel door frame
- Electronic control panel
- Blue LED display
- Adjustable temperature range (5 to 18 degrees)
- UV treated glass doors
- Key lock
- Reversible doors
- Internal light
- 3 Year warranty
- Built in option (bottom front vent)

# De'Longhi's Safety Precautions

De'Longhi pride themselves on their innovative range of the highest quality consumer products.

De'Longhi ensures all of its products are 100% safe through quality design and manufacture. All products meet or exceed stringent laboratory-tested safety requirements.

It is necessary for anyone using an electrical appliance to be safety conscious. The following precautions are essential for the safe use of an electrical appliance. Carefully read all of the instructions provided with your appliance:

- Always turn the power off at the power outlet before you insert or remove a plug. Remove by grasping the plug, do not pull on the cord.
- Do not use your appliance with an extension cord unless this cord has been checked and tested by a qualified technician or service person. The extension cord must be a VDE-Listed, 3-wire grounding extension cord that has a grounding plug and outlet and that the electrical rating of the cord is 220-240 volts and at least 10 amperes.
- Always use your appliance from a power outlet of the voltage (A.C. only) marked on the appliance.
- Do not use an appliance for any purpose other than its intended use.
- Do not attempt to repair an electrical appliance. Return a damaged or malfunctioning appliance to a qualified service centre for adjustment or repair if required.
- The appliance must be positioned so the AC plug is accessible.
- This appliance is designed exclusively for household use. All other uses are strictly forbidden.
- The appliance is not intended for use by persons (including children) with reduced physical, sensory or mental capabilities, or lack of experience and knowledge, unless they have been given supervision or instruction concerning use of the appliance by a person responsible for their safety. Children should be supervised to ensure that they do not play with the appliance.
- If the power cable is damaged, it must be replaced by the manufacturer, an authorised service centre or a qualified electrician in order to eliminate all risk.

# Wine Cabinet Safety Precautions

## IMPORTANT SAFETY INSTRUCTIONS - READ ALL INSTRUCTIONS BEFORE USING, AND SAVE FOR FUTURE REFERENCE.

Your safety and the safety of others is very important. Safety messages are displayed in this manual and on your appliance.

Read and obey these safety messages as they will alert you to a potential hazards and tell you how to reduce the chance of injury.



### **Safety Alert Symbol**

This symbol alerts you to potential hazards.



### **Danger**

Danger indicates a high level of risk to yourself and others. Ensure that care is taken to avoid severe injury or even death.



### **Warning**

Warning indicates a moderate level of risk to yourself, others and the product. Ensure that care is taken to avoid extensive product damage or serious injury.



### **Caution**

Caution indicates a level of risk to yourself, others and the product. Ensure care is taken to avoid moderate product damage or injuries.

# Wine Cabinet Safety Precautions

## **WARNING** PLEASE FOLLOW THE PRECAUTIONS APPLICABLE TO YOUR MODEL

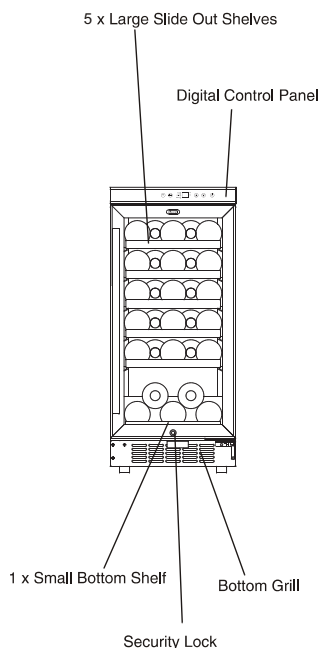
- Use two or more people to move and install appliance. Failure to do so can result in back or other injury.
- To ensure proper ventilation for your appliance, the front of the unit must be completely unobstructed. Choose a well-ventilated area with temperatures above 16°C and below 32°C. This unit must be installed in an area protected from the elements, such as wind, rain, water spray or drips.
- The appliance should not be located next to ovens, grills or other sources of high heat.
- It is important for the appliance to be level in order to work properly. You may need to make several adjustments to the feet to ensure it is level.
- The appliance must be installed to all electrical, plumbing, water and drain connections in accordance with state and local codes.
- Only use a standard electrical supply (220-240V AC only, 50 Hz) that is properly grounded in accordance with all local codes and ordinances.
- AC power plug is not to be squashed or damaged by placing too close to the rear of the cabinet.
- Do not kink, pinch or damage the power supply cord of the appliance.
- The fuse (or circuit breaker) size should be 10 amperes.
- Make certain that any pipes are not pinched, kinked or damaged during installations.
- Check for leaks or any damage to the appliance after installation.
- Do not use solvent-based cleaning agents or abrasives on any interior surfaces. These cleaners may damage or discolour the interior.
- These appliances are for wine storage/serving only and can not be used for refrigeration purposes.
- This appliance is designed exclusively for household use. All other uses are strictly forbidden.
- Never allow children to operate, play with, or crawl inside the appliance.
- The appliance is not intended for use by persons (including children) with reduced physical, sensory or mental capabilities, or lack of experience and knowledge, unless they have been given supervision or instruction concerning use of the appliance by a person responsible for their safety. Children should be supervised to ensure that they do not play with the appliance.
- Never clean appliance parts with flammable fluids. The fumes can create a fire hazard or explosion.
- Do not store or use gasoline or any other flammable vapors and liquids in the vicinity of this or any other appliance. The fumes can create a fire hazard or explosion.
- Do not use aerosols near cabinet.
- If the power cable is damaged, it must be replaced by the manufacturer, an authorised service centre or a qualified electrician in order to eliminate all risk.

# Parts and Features

## Model: DEWC30S

### Dimensions

- Height 855-865mm
- Width 380mm
- Depth 595mm (with handle 640mm)



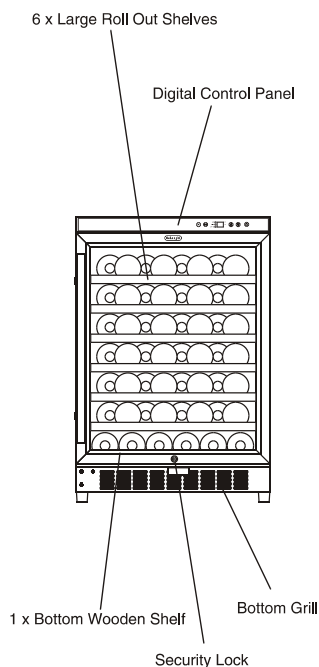
### Components

- Stainless steel handle
- Large slide out shelves x5
- Small Bottom Shelf
- Keys x2

## Model: DEWC54S

### Dimensions

- Height 855-865mm
- Width 595mm
- Depth 575mm (with handle 620mm)



### Components

- Stainless steel handle
- Large roll out shelves x6
- Bottom Wooden Shelf
- Keys x2

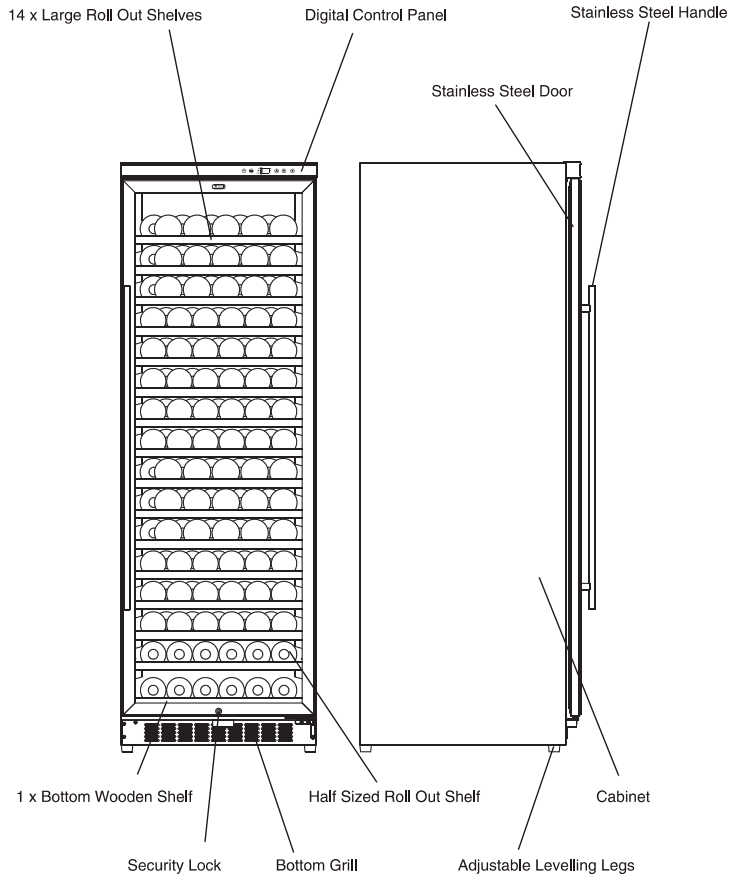


# Parts and Features

## Model: DEWC166S & Side View

### Dimensions

- Height 1805-1810mm
- Width 595mm
- Depth 675mm (with handle 720mm)



### Components

- Stainless steel handle
- Large roll out shelves x14
- Half sized roll out shelf
- Bottom Wooden Shelf
- Keys x2

# Installation Safety Precautions



## Electric shock risk

Before the appliance is used, it must be properly positioned and installed as described in this manual.

To reduce the risk of fire, electrical shock or injury when using the appliance, follow basic precautions, including:

- Plug into a grounded 3 pin wall outlet, do not remove grounding pin and do not use an adapter.
- Replace all panels before operating.
- It is recommended that a separate circuit, serving only your appliance be provided. Use wall outlets that cannot be turned off by a switch or pull chain.
- Improper use of the grounded plug or power cord can result in the risk of electrical shock. If the power cord is damaged, have it replaced by an authorized De'Longhi Product service centre.
- This appliance requires a standard 220-240 Volt AC ~/50Hz electrical grounded outlet with three pins. Have the wall outlet and circuit checked by a qualified electrician to make sure the outlet is properly grounded. When a standard 2 pin wall outlet is encountered, it is your responsibility and obligation to have it replaced with a properly grounded 3 pin wall outlet.
- The cord should be secured behind the appliance and not left exposed or dangling to prevent accidental injury.
- Never clean appliance parts with flammable fluids.
- Do not store or use gasoline or other flammable vapors and liquids in the vicinity of this or any other appliance.
- Before proceeding with cleaning and maintenance operations, TURN OFF the wine cabinet and unplug from the power.
- Do not connect or disconnect the electric plug when your hands are wet.
- Do not attempt to repair or replace any part of your appliance unless it is specifically recommended in this manual. All other servicing should be referred to a qualified technician.

## Extension cord

- Because of potential safety hazards under certain conditions, it is strongly recommended that you do not use an extension cord with this appliance. However, if you must use an extension cord it must be checked and tested by a qualified technician or service person.
- The extension cord must be a VDE-Listed, 3-wire grounding extension cord that has a grounding plug and outlet and that the electrical rating of the cord is 220-240 volts and at least 10 amperes.

# Installation

## Before installing your Wine Cabinet

1. Remove the exterior and interior packing.
2. Check to be sure you have all product components, as listed on pages 6 & 7.
3. Before connecting the Wine Cabinet to the power source, let it stand upright for approximately 2 hours. This will reduce the possibility of a malfunction in the cooling system from handling during transportation.
4. Clean the interior surface with lukewarm water using a soft cloth.
5. Install the handle on the left side of the door. For details of how to attach the door handle please refer to Page 11.

## Quick installation of your Wine Cabinet

1. Place your Wine Cabinet on a floor that is strong enough to support its weight even when fully loaded.
2. Level your Wine Cabinet by adjusting the front leveling leg at the bottom of the Wine Cabinet.
3. Plug the Wine Cabinet into an exclusive, properly installed wall outlet. Any questions concerning the electrical connection of your wine cabinet should be directed toward a certified electrician or an authorized De'Longhi Product Service centre.

NOTE: For the best performance of your Wine Cabinet locate it in a dry area away from direct sunlight and sources of heat.

### NOTE:

All Wine Cabinet models have the option of being recessed into a cavity space. For details of the recessed installation process and required ventilation please refer to page 10.

# Installation

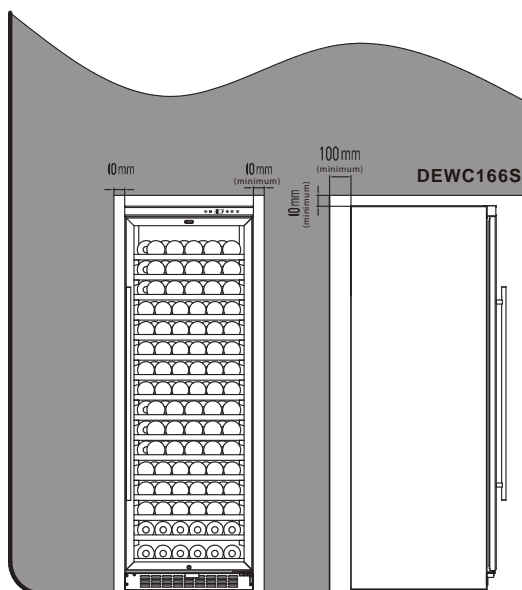
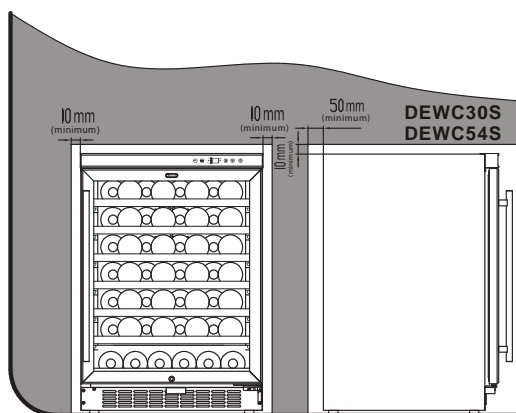
## Recessed installation of your Wine Cabinet

Your Wine Cabinet can be recessed into a cavity space as long as there is sufficient ventilation surrounding the appliance.

1. Ensure that the installation cavity is large enough to contain the Wine Cabinet including the required ventilation and that the floor is strong enough to support the weight of it when full. For the required ventilation dimensions please refer to the illustration.

NOTE: For the best performance of your Wine Cabinet locate it in a dry area away from direct sunlight and sources of heat. The recommended temperature for the installation location is 23 ~ 26°C (72 ~ 78°F)

2. Level your Wine Cabinet by adjusting the front leveling leg at the bottom of the Wine Cabinet.
3. Plug the Wine Cabinet into an exclusive, properly installed wall outlet. Any questions concerning the electrical connection of your Wine Cabinet should be directed toward a certified electrician or an authorized De'Longhi Product Service center.
4. Push the Wine Cabinet into the cavity ensuring the AC supply cord and plug do not get pinched or damaged.



# Installation

## Attaching the door handle

1. Pull away the door gasket (a) around the area where the handle is to be installed.  
(AS INDICATED IN ILLUSTRATION 1)  
NOTE: The gasket is easily displaced by hand, no tools are necessary.

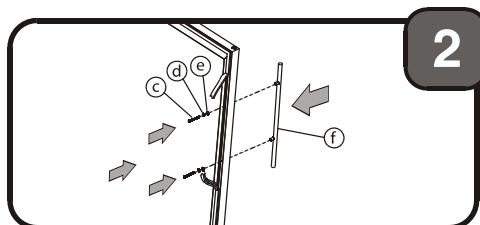
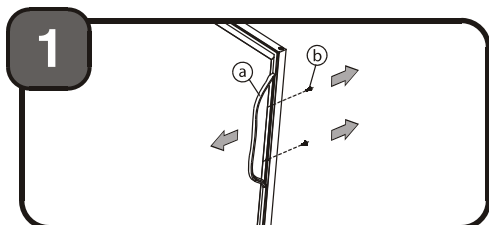
2. Using a flat head screwdriver remove the two pre-installed decorative plugs (b) from the back of the door.  
(AS INDICATED IN ILLUSTRATION 1)  
NOTE: Save the decorative plugs for future use.

3. Insert the two Phillips head screws (c) with the lock washers (d) and flat washers (e) through the gasket side of the door frame until the screws pass right through the door.  
(AS INDICATED IN ILLUSTRATION 2)

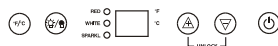
4. Align the handle (f) with the screws and tighten using a Phillips head screwdriver until the handle sets flush against the door frame.  
(AS INDICATED IN ILLUSTRATION 2)  
NOTE: Do not overtighten as this will cause damage to the handle assembly.

5. Replace the door gasket to its original position.

NOTE: The door can be customised to open from either side. For details of how to change the side the door opens from please refer to page 16.



# Using your Wine Cabinet



## ON / OFF Power

To turn the Wine Cabinet ON or OFF, press and hold the power button for 2 seconds. The LED readout will show the last set temperature.

### NOTE:

The factory preset temperature is 12°C.

NOTE: These appliances are for wine storage/ serving only and can not be used for refrigeration purposes.

## Setting the temperature control

- You can alter the temperature display setting from Fahrenheit to Celsius by pushing the F°/C° button. The Fahrenheit (F) or Celsius (C) will light up to indicate the set scale.
- You can control the internal temperature by pressing the UP or DOWN arrow buttons.
- The temperature will increase or decrease 1° for every press of the UP or DOWN arrow buttons. The set temperature will be displayed on the LCD display.

## Locking the control panel

- The lock function will be active automatically 12 seconds after the last time a button is pushed on the control panel.
- To unlock the control panel press and hold the +/- buttons together for 2 seconds.

## Humidity level

The humidity within the cabinet is maintained between 55 - 75%, dependent on the ambient room temperature.

A small plastic tray is provided to assist in maintaining the humidity levels within the cabinet. The tray is to be filled with water and placed in front of the circulation fan. Refill tray when necessary.

## Red wines

The temperature needs to be set at 15 ~ 18°C (58 ~ 65°F) and the LED lamp under "RED" will be lit.

## White wines

The temperature needs to be set at 9 ~ 14°C (48 ~ 57°F) and the LED lamp under "WHITE" will be lit.

## Sparkling wines

The temperature needs to be set at 5 ~ 8°C (40 ~ 47°F) and the LED lamp under "SPARKL" will be lit.

# Using your Wine Cabinet

## Storage capacity

Many wine bottles may differ in size and dimensions. As such the actual number of bottles you will be able to store may vary.

DEWC30S - You can place 30 standard bottles in this Wine Cabinet.

DEWC54S - You can place 54 standard bottles in this Wine Cabinet, by having 8 bottles on each full size shelf and 6 bottles on each half size shelf.

DEWC166S - You can place 166 standard bottles in this Wine Cabinet, by having 11 bottles on each full size shelf and 6 bottles on each half size shelf.

## Interior light

Interior LED lights are available inside your Wine Cabinet.

- You can turn the interior light on and off by pushing the button marked with the "bulb" symbol.
- If the long life LED lights require replacement please refer to your De'Longhi service provider.

## Door lock

Your unit is comes with a lock and key.

- The keys are located inside the plastic bag that are contained with this User Guide. Insert the key into the lock and turn it counterclockwise to unlock the door.
- To lock the door do the reverse operation making sure the metal pin is engaged completely. Remove the key and place it in a secure place for safekeeping.

### NOTE:

- If the Wine Cabinet is unplugged, power lost, or turned off, you must wait 3 to 5 minutes before restarting it. If you attempt to restart before this time delay, the Wine Cabinet will not start.
- When you use the Wine Cabinet for the first time or restart the Wine Cabinet after having been shut off for a long time, there could be a few degrees variance between the temperature you have set and the one inside the Wine Cabinet. This is normal and it is due to the length of the activation time. Once the Wine Cabinet has been running for a few hours the temperature inside the Wine Cabinet will match the temperature set on the LCD display.

# Care and Cleaning

## Cleaning your wine cabinet

1. Turn off the power, unplug the appliance, and remove all items including shelves.
2. Wash the inside surfaces with a warm water and baking soda solution. The solution should be about 2 tablespoons of baking soda per 150ml of water.
3. Wash the shelves with a mild detergent solution.
4. Wring excess water out of the sponge or cloth when cleaning areas around controls, or any electrical parts.
5. Wash the outside of the cabinet with warm water and mild liquid detergent. Rinse well and wipe dry with a clean soft cloth.
6. Rubber door seals if soiled will not close properly and therefore will not operate correctly. Clean the door seals with a mild detergent and damp cloth, then dry.

## Energy saving tips

The Wine Cabinet should be located in the coolest area of the room, away from heat producing appliances, and out of the direct sunlight.

## Power failure

Most power failures are corrected within a few hours and should not affect the temperature inside your Wine Cabinet if you minimize the number of times the door is opened.

If the power is going to be off for a longer period of time, you need to take the appropriate steps to protect your contents.

## Going on vacation

**SHORT VACATIONS:** Leave the Wine Cabinet operating during vacations of less than three weeks.

**LONG VACATIONS:** If the appliance will not be used for several months, remove all items and turn off the appliance. Clean and dry the interior thoroughly. To prevent odor and mold growth, leave the door open slightly; blocking it open if necessary.

## Moving your wine cabinet

1. Remove all items.
2. Securely tape down all loose items (shelves) inside your appliance.
3. Turn the adjustable legs up to the base to avoid damage.
4. Tape the door shut.
5. Be sure the appliance stays secure and upright during transportation. Also protect the outside of the appliance with a blanket, or similar item.



# Troubleshooting

## **Wine Cabinet does not operate**

- Check the Wine Cabinet is plugged in.
- Check the Wine Cabinet is turned ON.
- Check if a circuit breaker has been tripped or a fuse has blown.

## **Wine Cabinet is not cold enough**

- Check the temperature control setting.
- External environment may require a lower temperature setting.
- Has the door been opened too often?
- Check the door is closed completely.
- Check the door gasket seals properly.

## **Turns on and off frequently**

- Can be caused if the room temperature is hotter than normal.
- Can be caused if a large amount of contents has been added to the Wine Cabinet.
- Has the door been opened too often?
- Check the door is closed completely.
- Check the door gasket seals properly.
- Check the temperature control is set correctly.

## **The light does not work**

- Check the Wine Cabinet is plugged in.
- Check the Wine Cabinet is turned ON.
- Check if a circuit breaker has been tripped or a fuse has blown.
- Check the light button is "ON".

## **Can hear or feel vibrations**

- Check to assure that the Wine Cabinet is level.

## **The Wine Cabinet seems to make too much noise**

- A rattling noise may come from the flow of the refrigerant, which is normal.
- As each cycle ends, you may hear gurgling sounds caused by the flow of refrigerant in your Wine Cabinet.
- Normal contraction and expansion of the inside walls may cause popping and crackling noises.
- Check the Wine Cabinet is level.

## **The door will not close properly**

- Check the Wine Cabinet is level.
- If the door was reversed, check that it is properly installed.
- Check if the gasket is dirty or requires cleaning.
- Check the shelves are in the correct position.

## **Display "E1" or "E2"**

- The temperature sensor has failed. This fault should be referred to a qualified technician or authorised De'Longhi Service Centre.

## **Consumer Help**

If you have any concerns or questions regarding the performance or use of your appliance, please visit:

[www.delonghi.com.au](http://www.delonghi.com.au)

or

[www.delonghi.co.nz](http://www.delonghi.co.nz)

## **Australia**

Phone: 1800 126 659

Fax: 1800 007 289

## **New Zealand**

Phone: 0508 200 300

Fax: 0508 200 301

# Customising your Wine Cabinet

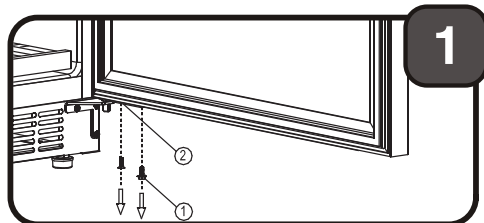
## Reversing the door swing

Your Wine Cabinet has the capability of the door opening from either the left or right side. The unit is delivered to you with the door opening from the left side.

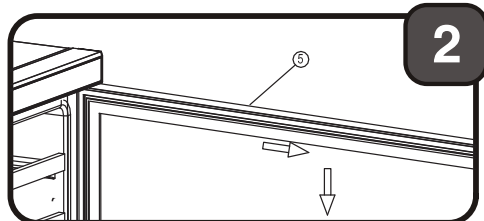
To reverse the door opening direction:

1. Open the glass door and remove the two lock screws holding the lower hinge to the glass door. Be careful to hold the glass door firmly after removing the screws.

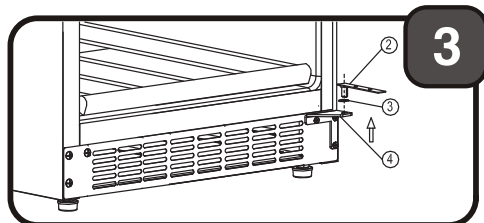
NOTE: All parts removed must be saved to allow the door swing to be reversed.



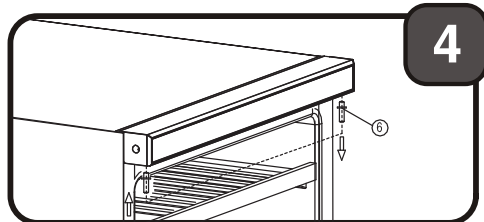
2. Pull down to remove the glass door from the upper hinge pivot and place the door on a padded surface to prevent scratching it.



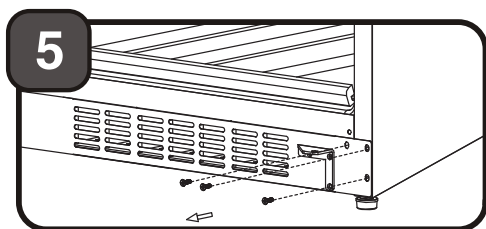
3. Remove the two decoration screws underneath the lower left corner of glass door. Then install and tighten them at the opposite designated holes.



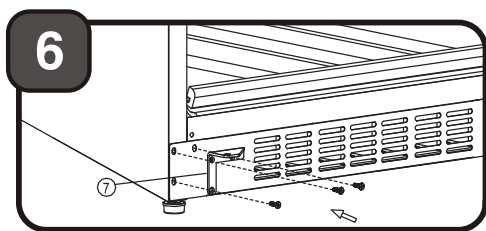
4. Remove the lower door hinge and bush.



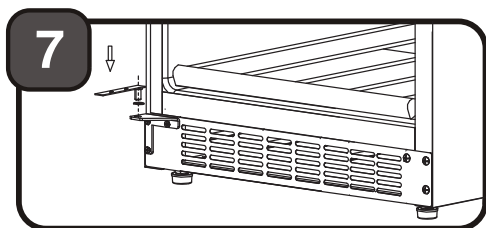
# Customising your Wine Cabinet



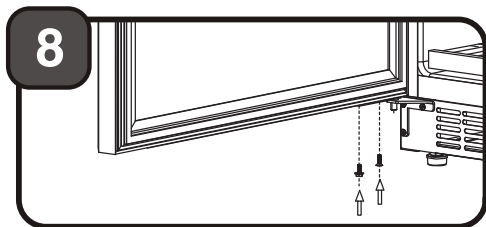
5. Install the lower hinge together with the bush into the left side in the designated position.



6. Remove the upper hinge pivot from the right side then install and tighten it into the left position.



7. Locate and press the glass door up onto the upper hinge pivot. Be careful to hold the glass door firmly until the lock screws are tightened.



8. Move glass door into position and install the two lock screws to connect the lower hinge with the glass door and tighten them before the door is leveled. Then remove the handle from the left side and install it on the right side of the door, as specified on Page 11.

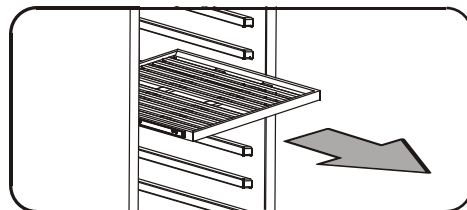
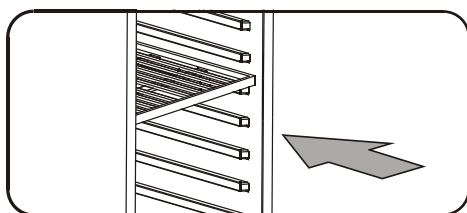
# Customising your Wine Cabinet

## Shelves

Your Wine Cabinet is equipped with wooden roller shelves, these allow you to slide the shelves smoothly in and out to access your wine selection (except for the bottom wooden shelf).

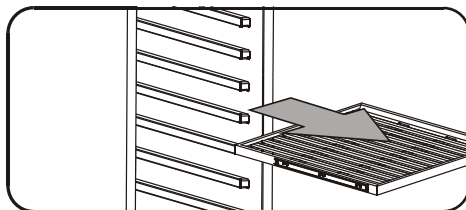
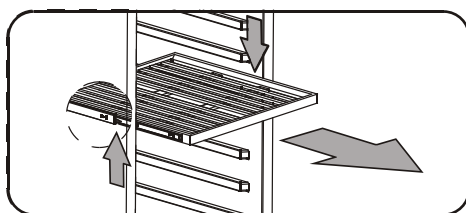
### Opening and closing roller shelves

- To prevent damaging the door gasket, make sure to have the door all the way opened when pulling shelves out of the rail compartment.
- For easy access to the bottles, you can slide the shelves approximately 1/3 out of the rail compartment (as indicated below).



### Removing the roller shelves

1. To remove the shelves, slide to outer position.
2. Use a long flat screwdriver to press down the right plastic notch and at the same time lift the left plastic notch (as indicated below)
3. Then proceed to pull out the shelf slowly. Contact the De'Longhi Helpline if assistance is needed.



# Help us Help You

Read this guide carefully, it is intended to help you operate and maintain your new Wine Cabinet properly.

Keep it handy to answer your questions. If you don't understand something or you need more assistance, please call the De'Longhi Helpline.

To help us provide prompt answers to your queries please record your Wine Cabinet model and serial numbers. You'll find them on a plate located on the rear outside wall of the Wine Cabinet.

## Wine cabinet details

---

Date of Purchase

---

Model Number

---

Serial Number

STAPLE OR  
AFFIX PURCHASE  
RECIPT HERE

## Before you call for service

Check the Troubleshooting Section on page 15. It lists causes of minor operating problems that you can correct yourself.

# Warranty Information

The De'Longhi Wine Cabinets are warranted against faults resulting from manufacturing or material defects. The warranty period for normal domestic installation and use is three years from the date of installation in your home. In non-domestic use De'Longhi limits the voluntary warranty to 6 months.

De'Longhi undertakes to repair or replace the Wine Cabinets at our discretion if the product is found to be defective due to a manufacturing fault during the warranty period.

This warranty excludes any damage caused by misuse, neglect, shipping accident, or incorrect installation. Normal wear and tear is also expressly excluded. The warranty claim is void if no fault is found with the product or if work is carried out by anyone other than an authorized De'Longhi Service Agent.

In Australia, this warranty is additional to the conditions and guarantees which are mandatory as implied under the Trade Practices Act 1974 and State and Territory legislation.

## **How to contact us about a warranty claim**

To talk to a De'Longhi representative for further warranty or product information please call the number in your country:

### **Australia**

[www.delonghi.com.au](http://www.delonghi.com.au)

Phone: 1800 126 659

### **New Zealand**

[www.delonghi.co.nz](http://www.delonghi.co.nz)

Phone: 0508 200 300

NOTE: Warranty is determined by unit serial number and date of installation.





## Consumer Helpline

### **Australia**

Phone: 1800 126 659

Fax: 1800 007 289

### **New Zealand**

Phone: 0508 200 300

Fax: 0508 200 301

[www.delonghi.com.au](http://www.delonghi.com.au)

[www.delonghi.co.nz](http://www.delonghi.co.nz)

Distributed by De'Longhi Australia Pty Ltd.

ABN 49 104 012 857

P.O. Box 4156 Milperra BC, NSW 1891

Distributed by De'Longhi New Zealand Ltd.

P.O. Box 58-056 Greenmount, Auckland



is a registered Trademark  
of De'Longhi Australia Pty Ltd.  
ABN 49 104 012 857.

© 2008 De'Longhi Australia Pty Ltd.

08A