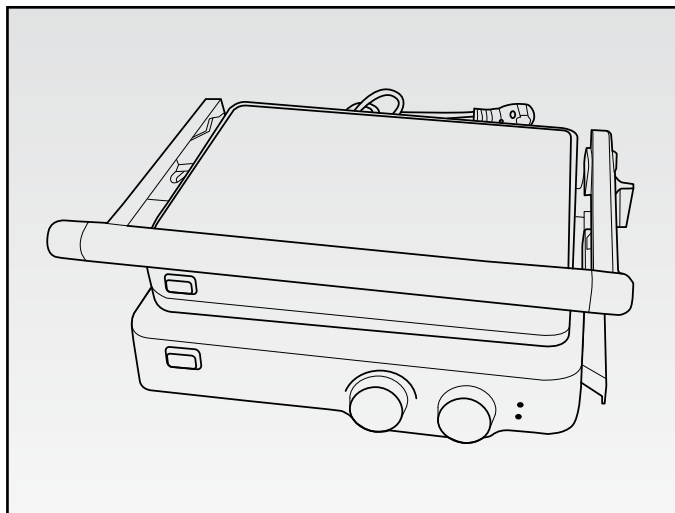


# ***Ariete***



***Contact grill***

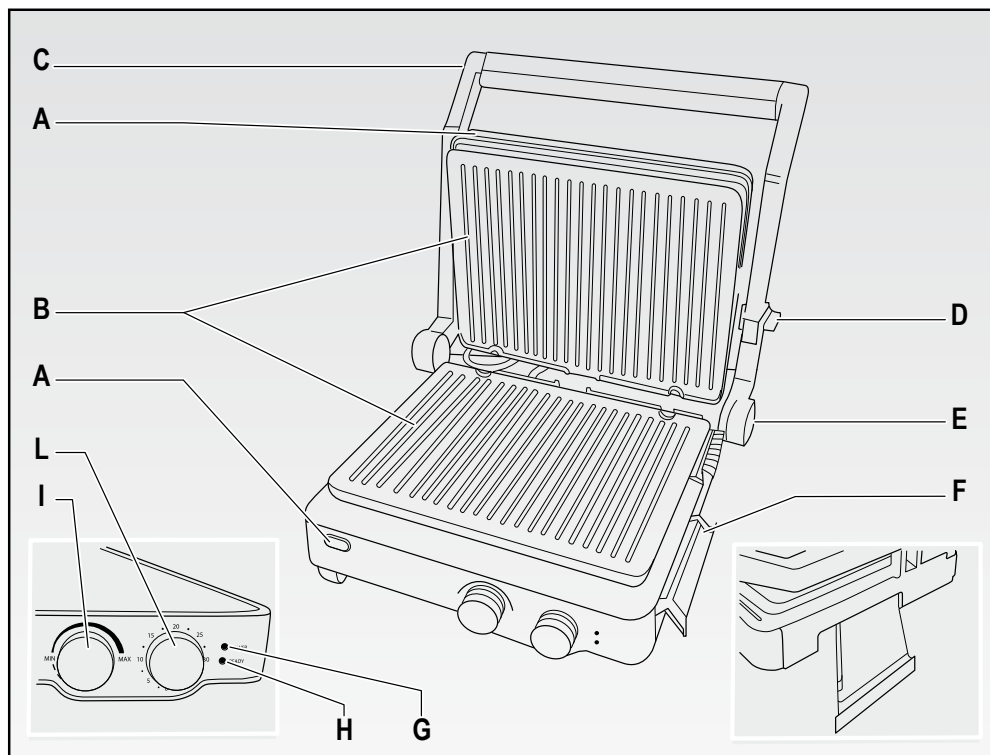


Fig. 1

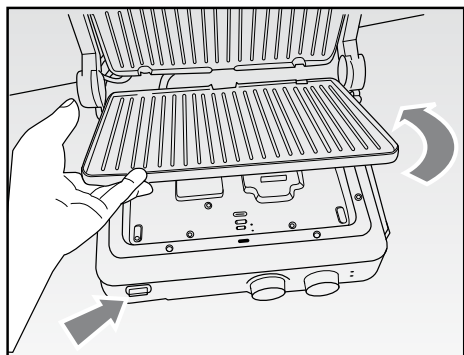


Fig. 2

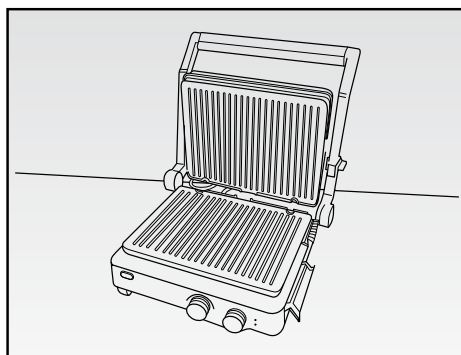


Fig. 3

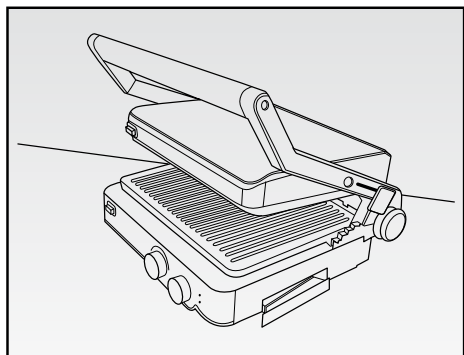


Fig. 4

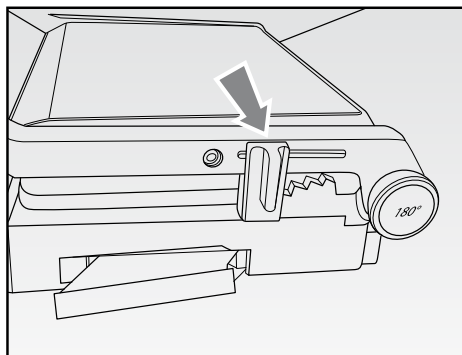


Fig. 5

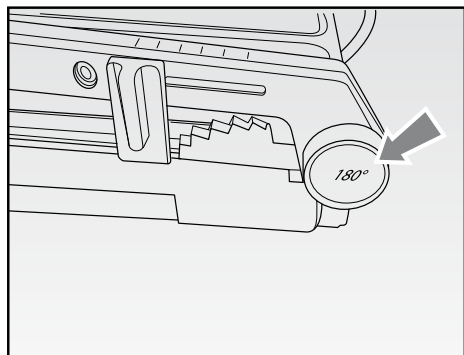


Fig. 6

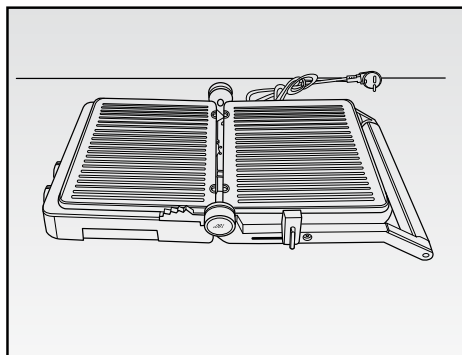


Fig. 7

# IMPORTANT SAFEGUARDS

## READ THESE INSTRUCTIONS BEFORE USE

The necessary precautions must be taken when using electrical appliances, and these include the following:

1. Make sure that the voltage on the appliance rating plate corresponds to that of the mains electricity.
2. Never leave the appliance unattended when connected to the power supply; unplug it after every use.
3. Never place the appliance on or close to sources of heat.
4. Always place the appliance on a flat, level surface during use.
5. Place the appliance on a heat-resistant surface.
6. Do not place the appliance on or near to sources of heat, electrical elements or inside a hot oven. Do not place it on top of other appliances.
7. Do not use the appliance near to walls or curtains.
8. Never leave the appliance exposed to the elements (rain, sun, etc....).
9. Make sure that the power cord does not come into contact with hot surfaces.
10. This appliance can be used by children aged from 8 years and above and persons with reduced physical, sensory or mental capabilities or lack of experience and knowledge only if they have been given supervision or instruction concerning use of the appliance in a safe way and understand the hazards involved. Do not allow children to play with the appliance. Cleaning and user maintenance must not be carried out by children unless they are older than 8 and supervised.
11. Children under age 8 should not be allowed to handle appliance and its power cord which must be kept out of their reach.
12. NEVER PLACE THE APPLIANCE BODY, PLUG OR POWER CORD IN WATER OR OTHER LIQUIDS; ALWAYS WIPE CLEAN WITH A DAMP CLOTH.
13. ALWAYS UNPLUG THE POWER CORD FROM THE ELECTRICITY MAINS BEFORE FITTING OR REMOVING SINGLE ATTACHMENTS OR BEFORE CLEANING THE APPLIANCE.
14. Accessible surfaces can become very hot while the appliance is operating.
15. Never clean the appliance with abrasive or corrosive detergents; the appliance is not dishwasher safe.
16. Always make sure that your hands are thoroughly dry before using or adjusting the switches on the appliance, or before touching the power plug or power connections.

17. To unplug the appliance, grip the plug and remove it directly from the power socket. Never pull the power cord to unplug the appliance.
18. Do not use the appliance if the power cord or plug are damaged or if the appliance itself is faulty; all repairs, including substitution of power cord, must be carried out exclusively by an Ariete assistance centre or by authorized Ariete technicians in order to avoid all risks.
19. Any changes to this product that have not been expressly authorised by the manufacturer may lead to the user's guarantee being rendered null and void.
20. In the event that you decide to dispose of the appliance, we advise you to make it inoperative by cutting off the power cord. We also recommend that any parts that could be dangerous be rendered harmless, especially for children, who may play with the appliance or its parts.
21. Packaging must never be left within the reach of children since it is potentially dangerous.

## **DO NOT THROW AWAY THESE INSTRUCTIONS**

### **APPLIANCE DESCRIPTION (Fig. 1)**

- A Plate unlocking button
- B Grooved grill plates
- C Opening handle
- D Top plate for lifting the hinge (5 levels) and locking/unlocking the plate
- E Unlocking button for 180° opening plates
- F Drip tray
- G On light
- H Temperature light
- I Temperature selection dial
- L On / Off / grilling time selection dial (timer)

The appliance is intended for DOMESTIC USE ONLY, do not use it for commercial or industrial purposes.

This appliance complies with Directives 2014/35/EU and EMC 2014/30/EU, as well as to regulation (EC) No. 1935/2004 of 27/10/2004 on materials in contact with food.

### **INSTRUCTIONS FOR USE**

**WARNING:** EVEN WHEN NOT IN USE, UNPLUG THE APPLIANCE BEFORE INSERTING OR REMOVING THE SINGLE PARTS OR BEFORE CLEANING.

- Before use, remove any labels from plates.  
Check the grill plates (B) are clean and free of dust streaks.
- If necessary, remove the two plates (B) by pressing the apposite unlocking buttons (A), Fig. 2, and clean them with warm water and mild detergent.

- Insert the plates (B) back, by aligning the rear slots with the hooks on the appliance body and pressing them slightly until they click into place.

**WARNING:** Before using the appliance, make sure all components are properly assembled.

**WARNING:** Make sure the plate is closed during pre-heating phase.

**WARNING:** While using for the first time, a very small amount of smoke may come out; this is just caused by the warming up of some components.

- Plug in appliance. The related red light goes on (G).
- Turn the dial (L) and set the required grilling time according to the type of food.
- Turn the dial (I) to set the required temperature setting. The green light (H) switches on when the appliance is heating up. As soon as the light goes off, the appliance is ready for use.
- Keep the plate closed during pre-heating phase.

## DIFFERENT GRILLING MODES

The appliance has different grilling positions, according to the type of food to be cooked.

### Standard grilling position:

- This position is suitable for meat, sandwiches, toasts, skewers, etc., that is food in contact with the plate.
- Open the top plate by means of the handle (C), Fig. 2.
- Place the food to be grilled on the bottom grill plate. Always place food towards the back of the plate and then close the top plate until it comes in contact with food. The plates are tilting to optimize the adherence of food throughout the surface.
- According to the type of food, in case the combined grilling of the two plates (bottom and top) is not required, the appliance can be used with the top plate in vertical position. To do this, rotate the top plate backward until it locks in place automatically (Fig. 3).
- Make sure the drip tray (F) is properly positioned.

### Oven grilling position (Fig 4):

- This appliance is ideal for warming up pizza, bruschetta, bread, brioche, etc. The oven grilling mode avoids the contact with food indeed, since it allows to just heat up/grill it.
- Open the top plate by means of the handle (C).
- Place food to be cooked on the bottom plate.  
Always place food towards the back of the plate.
- Lower the top grill plate, by taking it with the handle (C) and using the apposite movable hinge (D), Fig. 5. It is possible to position the upper part of the grill (Fig. 4) in 5 modes indicated on the hinge, from LOW to HIGH, according to the required height.
- Make sure the drip tray (F) is properly positioned.

### Open plate grilling position:

- This position is suitable to grill fish, skewers, vegetable, etc. and offers a very wide surface, ideal to cook different kinds of food at the same time.
- To set the appliance in the position with open plates, press the appropriate unlocking button (E) and at the same time rotate the top plate backward using the apposite handle (C), Fig. 6-7.

- Place food to be grilled on the open plates.
- Make sure the drip tray (F) is properly positioned.
- For grilling, 5-20 minutes are required. Anyhow, time depends on personal tastes, as well as type and thickness of food.
- After cooking, turn the appliance off by rotating the dial (L) to "0", unplug the appliance and raise the top plate using the apposite handle (C). Remove food using an apposite plastic spatula.

**WARNING:** Never use metal kitchenware to prevent the non-stick coating of grill plates from being damaged.

## CLEANING

**WARNING:** Before cleaning the appliance, unplug it and wait for all hot parts to cool down.

**WARNING:** NEVER PLACE THE APPLIANCE BODY, PLUG OR POWER CORD IN WATER OR OTHER LIQUIDS; ALWAYS WIPE CLEAN WITH A DAMP CLOTH.

- Clean the appliance body using a dry cloth.
- Clean the two plates, as previously described, and clean them by using a plastic spatula with warm water and mild detergent.

**WARNING:** Never use metal objects, abrasive sponges or powders to prevent the plate non-stick coating from being damaged.

- Remove and clean the drip tray after each use with warm water and mild detergent.
- Before storing, lock the grill by means of the hinge (D) on position "■".

## GRILLING TIME

Sandwich	6-8 min.
Sausages/wurst	8-10 min.
Toast	3-6 min.
Fish	8-10 min.
Skewers	8-10 min.
Vegetables	8-10 min.
Meat	5-15 min.



**IMPORTANT INFORMATION FOR CORRECT DISPOSAL OF THE PRODUCT IN ACCORDANCE WITH EC DIRECTIVE 19/2012/UE.**

At the end of its working life, the product must not be disposed of as urban waste.

It must be taken to a special local authority differentiated waste collection centre or to a dealer providing this service.

Disposing of a household appliance separately avoids possible negative consequences for the environment and health deriving from inappropriate disposal and enables the constituent materials to be recovered to obtain significant savings in energy and resources. As a reminder of the need to dispose of household appliances separately, the product is marked with a crossed-out wheeled dustbin.

## WARRANTY

**PLEASE AFFIX YOUR RECEIPT/PROOF OF PURCHASE HERE.  
IN THE EVENT OF A CLAIM UNDER THIS WARRANTY THE AFORESAID RECEIPT/PROOF OF  
PURCHASE MUST BE PRODUCED TOGETHER WITH THIS WARRANTY.**

Model number	(Lot number:       )
Product name	
Date of purchase	
Place of purchase	

1. The party selling the product ("the seller") to the original purchaser of this product ("the customer") hereby warrants that this product will be of good quality and, in good working order and, free of defects and suitable for its intended purpose under normal household use, for a period of 1 (one) year from the date of purchase ("warranty period") of this product.
2. In the event that the warranty period has not lapsed and the product is not of a good quality, or in good working order or, is defective or is not suitable for its intended purpose under normal household use, the customer may, subject to paragraph 3 below, return the product to the seller and have the following options available:
  - 2.1 Within the first 6 (six) months of the warranty: to receive a refund of the actual price paid or exchange the product for the same or similar product of the same purchased value;
  - 2.2 Within the second 6 (six) months of the warranty: to have the product exchanged for the same or similar product of the same purchased value.
3. The seller will not replace the product or refund the customer in terms of this warranty if the product:
  - 3.1 has been altered contrary to the instructions provided in the product manual;
  - 3.2 has been misused, abused or tampered with;
  - 3.3 is defective or not in working order due to ordinary wear and tear;
  - 3.4 is damaged resulting from the customer's gross negligence, recklessness, malicious behavior or criminal conduct;
  - 3.5 has been utilised for commercial use.

4. This warranty applies only to the product that has been purchased from the seller and not to any expendables attached to or installed on the product by the customer.
5. Any claim in terms of this warranty must be supported by the original proof of purchase.
6. Note that the exchange item will only carry the balance of the warranty period as from the original date of purchase.
7. Spares:  
Selected spares can be purchased from:

ServiceTec  
10 Saddle Drive  
Woodmead Office Park  
Woodmead

Email: spares.za@delonghigroup.com  
Tel: 0153 474 11 27+



***Ariete***

De' Longhi Appliances Srl  
Divisione Commerciale Ariete  
Via San Quirico, 300  
50013 Campi Bisenzio FI - Italy  
E-Mail: [info@ariete.net](mailto:info@ariete.net)  
Internet: [www.ariete.net](http://www.ariete.net)