

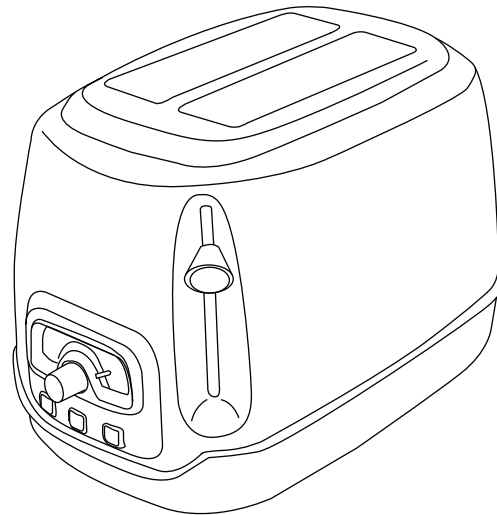
KENWOOD

English

3 - 7

Type TCM45

instructions for use



6345102500 - REV.0 01/12/2020

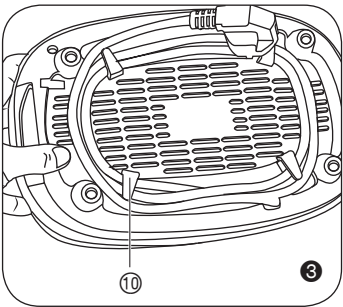
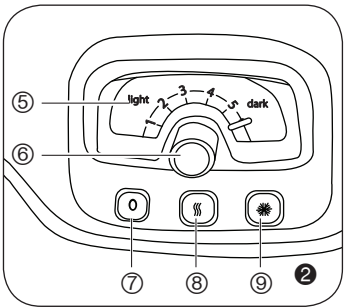
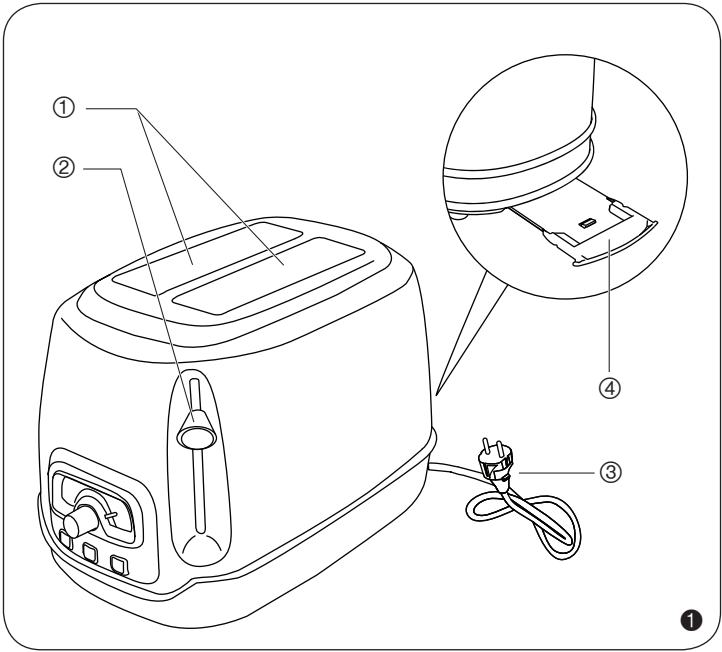
Kenwood Ltd

New Lane
Havant
Hampshire
PO9 2NH

kenwoodworld.com

© Kenwood Ltd 2018





English

Please refer to the first page, where you will find illustrations

About this manual

This appliance is made in conformity with appropriate European Regulations in force, to protect the user wherever possible from potential hazards. Even if you are familiar with this type of appliance, carefully read this manual before use. Only use this appliance for the purpose it is designed for in order to prevent accidents and damage. Keep this manual close by for future consultation. If you should decide to give this appliance to other people, remember to also include these instructions.

Intended use

The appliance must be used to defrost, heat and toast slices of bread and other dry foods of similar consistency. Any other use of the appliance is not intended by the Manufacturer who does not accept any responsibility for damages of any kind caused by improper use of the appliance itself. Improper use also results in any form of warranty being forfeited.

Safety warnings

Read these instructions carefully.


- This appliance is designed only and solely for private use, and is therefore to be considered unsuitable for industrial or professional purposes.
- Do not use the appliance if the power cord or the plug are damaged, or if the appliance is faulty. All repairs, including the power cord replacement, must be carried out only by the Service Center or by authorized technicians, in order to avoid any risk.
- This appliance is designed solely for household and similar uses such as:
 - in cooking areas used by personnel of shops, offices and other professional environments;
 - on farms;
 - guests of hotels, motels and other residential environments;
 - bed and breakfast type of environments.
- This appliance can be used by children

aged from 8 years and above and persons with reduced physical, sensory or mental capabilities or lack of experience and knowledge if they have been given supervision or instruction concerning use of the appliance in a safe way and understand the hazards involved.

- Children shall not play with the appliance or its components.
- Cleaning and maintenance by the user must not be carried out by children unless they are older than 8 years and are monitored during the operation.
- Always keep the appliance and the power cord out of the reach of children under the age of 8 years.
- Do not leave the packaging near children because it is potentially dangerous.
- Any modifications made on this product that are not explicitly authorised by the manufacturer may lead to the forfeiture of its safety and guarantee of its use by the user.
- Before plugging the appliance into the mains socket, ensure that the voltage shown on the rating plate matches the local voltage supply.
- Always connect the appliance to an earthed socket.
- The appliance is not intended to be operated by means of an external timer or separate remote-control system.
- Even when the appliance is not in use, unplug it from the electrical outlet before inserting or removing individual parts or before cleaning it.
- Make sure that your hands are dry before

using or adjusting the switches on the appliance, or before touching the plug and power connections.

- Do not pull the power cord to unplug the appliance.
- Do not leave the power cord against sharp edges or sharp parts.
- Do not put your hands or any type of metal (such as knives or aluminium foil) inside the toaster.
- Warning danger of burns: do not touch the upper edges of the toaster during use, as they are liable to get extremely hot.

 Attention. Hot surface.

- Do not immerse the appliance, the plug or the power cord in water or other liquids. Clean them with a damp cloth.
- Do not place the appliance on or near heat sources.
- The bread can burn, so the toaster must not be used under or near combustible materials such as curtains.
- Do not insert more than two slices for each slit.
- Do not put your hands or any type of metal (such as knives or aluminium foil) inside the toaster.
- In the event that this appliance is to be disposed of, it is suggested that the power cord is cut off. It is also recommended that all potentially dangerous components including the power cord are rendered harmless to prevent personal injury. Do not let children play with the appliance or its components.

Save these instructions for future reference

Description of the appliance

- ① Slits
- ② ON lever
- ③ Power cord
- ④ Crumb tray
- ⑤ Toasting level indicator
- ⑥ Knob for adjusting the toasting level
- ⑦ Stop button
- ⑧ Warming function button
- ⑨ Defrost function button
- ⑩ Cord storage device

Operating instructions

Important

- Do not use slices of bread too thin or broken.
- Do not put too bulky foods.
- **Do not include foods that may drip during cooking. In addition to making difficult the cleaning operations, they can cause fires. Clean the crumb tray from any food residue or crumbs before each use.**
- **Do not put forks or other utensils inside the appliance. This operation can damage the heating elements of the appliance and create a danger of electric shock.**

First use

At the first use it is recommended to keep the appliance on for a few minutes to eliminate the smell of "new". The appliance may give out a little smoke when used for the first time.

How to make toast

- 1 Insert the slices of bread inside of the toaster slits ①.
- 2 Turn the knob ⑥ to set the desired toasting level
- 3 Lower the ON/OFF lever ②.
- 4 After a few minutes the toasting is

completed, and the slices of bread are ejected upwards.

- 5 After use, press the button ⑦ to switch the appliance off.
- 6 Disconnect the power supply cable from the power point. Remove any residues from the crumb tray ④.
- 7 After use, we recommend using the cord storage ⑩ to wrap the cord around the appliance base. Press the button ⑦ to stop the toasting at any time.

Defrost function

You can use the appliance to defrost frozen bread slices.

- 1 Insert the frozen slices of bread inside the toaster slits ①.
- 2 Turn the knob ⑥ to set the toasting level to position "1".
- 3 Lower the ON/OFF lever ②.
- 4 Press the button ⑨ to activate the defrost function. The button remains lit throughout the defrosting time. If you want to defrost and bake bread at the same time, adjust the toasting on higher levels.

Warming function

You can use the appliance to warm the slices of bread.

- 1 Insert the slices of bread inside of the toaster slits ①.
- 2 Lower the ON/OFF lever ②.
- 3 Press the button ⑧ to activate the heating function. The button remains lit throughout the warming time. The warming time is fixed and can not be modified.

Cleaning and maintenance

Regular maintenance and cleaning preserve and maintain the appliance efficient for a longer period.

- **All cleaning operations described below must be made with power off and the electrical plug disconnect from the power outlet.**
- **Each cleaning and**

maintenance operation should be performed when the unit is completely cooled.

- **Don't immerse the base in water. Don't use aggressive products or solvents that may damage the plastic.**
- **Never use sharp metal tools to clean inside the appliance.**

- 1 After each use of the appliance, empty and clean the crumb tray ④.
- 2 Wash the appliance using a slightly wet, non-abrasive cloth, water and few drops of a non-aggressive product.
- 3 Dry the appliance by hand.

Service and customer care

- If you experience any problems with the operation of your appliance, before requesting assistance visit www.kenwoodworld.com.
- Please note that your product is covered by a warranty, which complies with all legal provisions concerning any existing warranty and consumer rights in the country where the product was purchased.
- If your Kenwood product malfunctions or you find any defects, please send it or bring it to an authorised KENWOOD Service Centre. To find up-to-date details of your nearest authorised KENWOOD Service centre, visit www.kenwoodworld.com or the website specific to your Country.
- Made in China.



IMPORTANT INFORMATION FOR CORRECT DISPOSAL OF THE PRODUCT IN ACCORDANCE WITH THE EUROPEAN DIRECTIVE ON WASTE ELECTRICAL AND ELECTRONIC EQUIPMENT (WEEE)

At the end of its working life, the product shall not be disposed of as urban waste.

It shall be taken to a special local authority differentiated waste collection centre or to a dealer providing this service.

Disposing of a household appliance separately avoids possible negative consequences for the environment and health deriving from inappropriate disposal and enables the constituent materials to be recovered to obtain significant savings in energy and resources. As a reminder of the need to dispose of household appliances separately, the product is marked with a crossed-out wheeled dustbin.