

Ariete



Food processor

Numero Verde
800-809065

Ariete

De' Longhi Appliances Srl
Divisione Commerciale Ariete
Via San Quirico, 300
50013 Campi Bisenzio (FI)
E-Mail: info@ariete.net
Internet: www.ariete.net

CE

1779

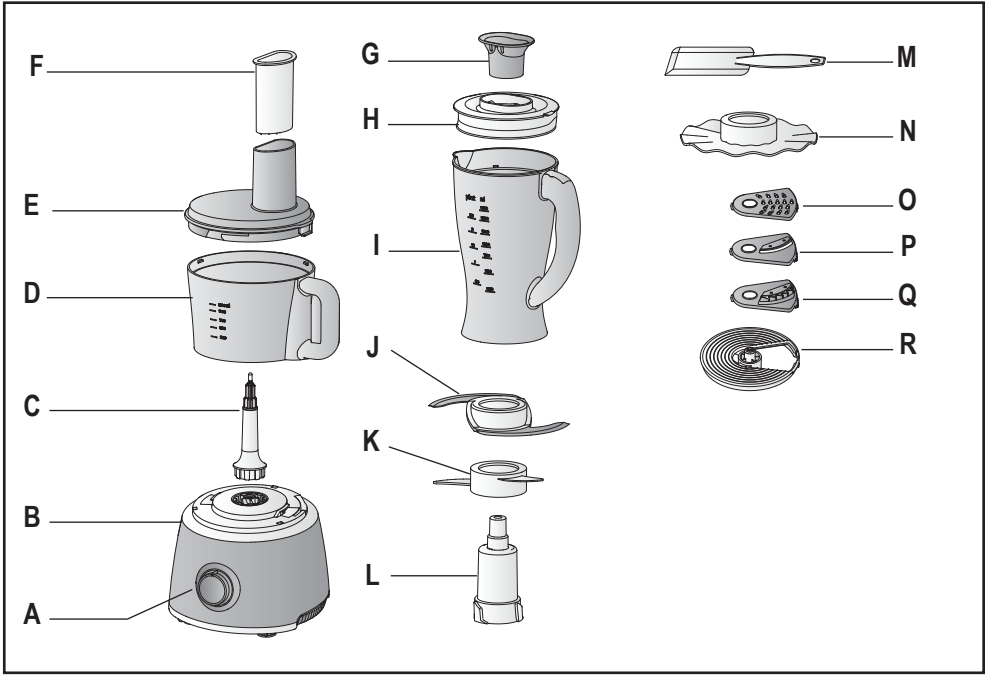


Fig. 1

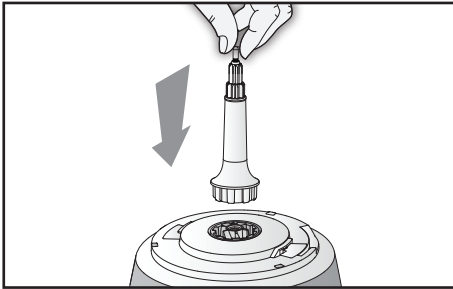


Fig. 2

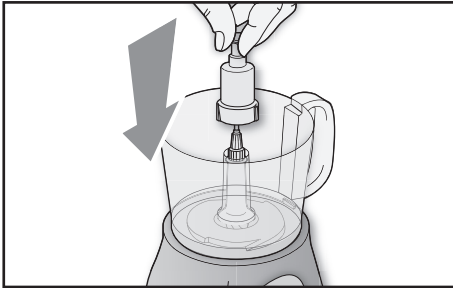


Fig. 4

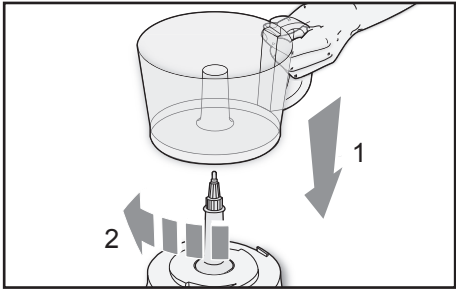


Fig. 3

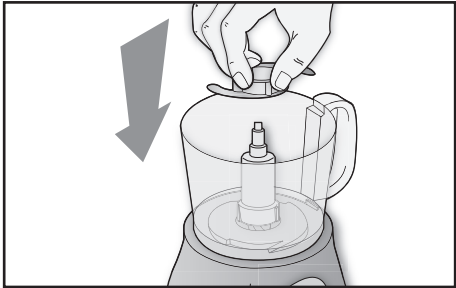


Fig. 5

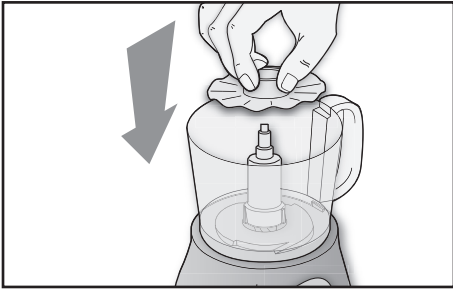


Fig. 6

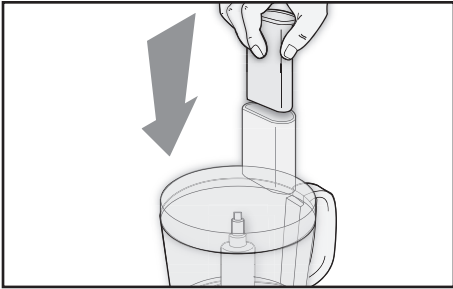


Fig. 8

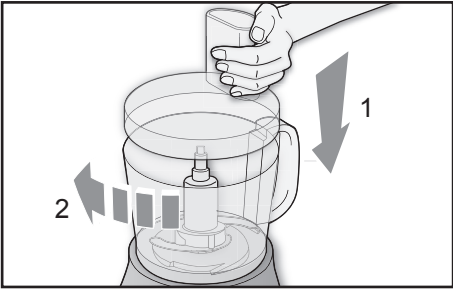


Fig. 7

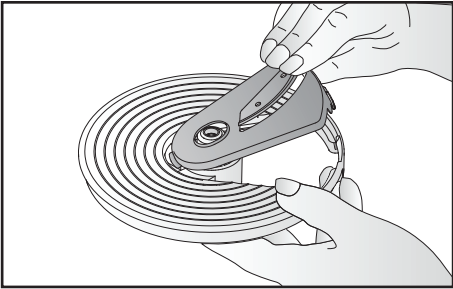


Fig. 9

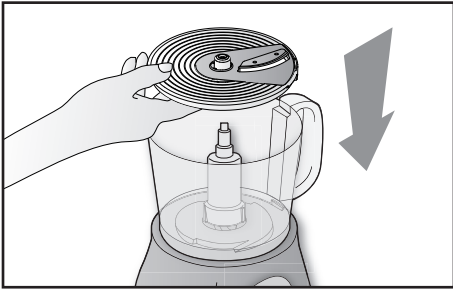


Fig. 10

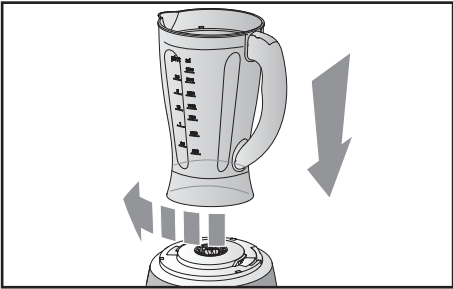


Fig. 11



Fig. 12

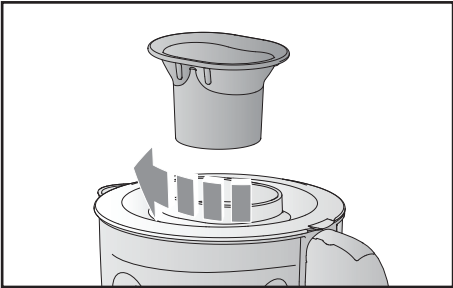


Fig. 13

IMPORTANT SAFEGUARDS


READ THESE INSTRUCTIONS BEFORE USE.

The necessary precautions must be taken when using electrical appliances, and these include the following:

1. Make sure that the voltage on the appliance rating plate corresponds to that of the mains electricity.
2. Never leave the appliance unattended when connected to the power supply; unplug it after every use.
3. Never place the appliance on or close to sources of heat.
4. Always place the appliance on a flat, level surface during use.
5. Never leave the appliance exposed to the elements (rain, sun, etc...).
6. Make sure that the power cord does not come into contact with hot surfaces.
7. This appliance is not intended for use by persons (including children) with reduced physical, sensory or mental capabilities, or lack of experience and knowledge, unless they have been given supervision or instruction concerning use of the appliance by a person responsible for their safety.
8. Children should be supervised to ensure that they do not play with the appliance.
9. NEVER PLACE THE APPLIANCE BODY, PLUG OR POWER CORD IN WATER OR OTHER LIQUIDS; ALWAYS WIPE CLEAN WITH A DAMP CLOTH.
10. ALWAYS UNPLUG THE POWER CORD FROM THE ELECTRICITY MAINS BEFORE FITTING OR REMOVING SINGLE ATTACHMENTS OR BEFORE CLEANING THE APPLIANCE.
11. Always make sure that your hands are thoroughly dry before using or adjusting the switches on the appliance, or before touching the power plug or power connections.
12. NEVER TOUCH MOVING PARTS.
13. WARNING: ALWAYS FIT THE BLADE BEFORE INSERTING THE FOOD.
Before removing the lid, unplug the appliance and make sure that the blade has stopped moving.
14. Never operate the appliance when empty.
15. Never use the appliance if the blade is damaged.
16. NEVER PLACE INGREDIENTS, INCLUDING LIQUIDS, ABOVE THE MAXIMUM LIMIT SHOWN ON THE BOWL.
17. Never use the appliance to chop excessively hard foods (e.g., ice cubes or meat on the bone).
18. Never use the fitted bowl to move the appliance; i.e., the handle on the bowl is not a carry handle for the appliance as a whole.
19. To prevent accidents or damage to the appliance, always keep hands and

- cooking utensils well away from moving blades or cutting discs.
20. The blades are sharp. Handle them with care. Always hold them by the plastic parts.
 21. Never introduce foods by hand. Always use the pusher.
 22. Never remove foods from the sides of the bowl while the appliance is operating. Switch off the appliance, unplug the power cord from the mains and use the special spatula.
 23. THIS APPLIANCE HAS BEEN DESIGNED TO OPERATE ONLY IF THE BOWL AND RELEVANT LID HAVE BEEN FITTED CORRECTLY. IF THIS IS NOT THE CASE, TAKE IT TO YOUR NEAREST AUTHORISED ASSISTANCE CENTRE.
 24. ALWAYS UNPLUG THE APPLIANCE BEFORE CARRYING OUT ANY OPERATION INSIDE THE BOWL.
 25. PREPARE THE BLENDER GOBLET WITH THE FOODS TO BE BLENDED AND FIT IT TO THE POWER BASE BEFORE PLUGGING IN THE APPLIANCE.
 26. Never pick up or carry the appliance by the bowl when fitted. In other words, the bowl handle must never be used to carry the appliance.
 27. To unplug the appliance, grip the plug and remove it directly from the power socket. Never pull the power cord to unplug the appliance.
 28. Never use the appliance if the power cord or plug are damaged or if the appliance itself is faulty; in this case, take it to your nearest Authorised Assistance Centre.
 29. To prevent any risks, if the power cord is damaged, it must be replaced by the manufacturer, its Technical Assistance Service or a similarly qualified person.
 30. This appliance is designed for HOME USE ONLY and may not be used for commercial or industrial purposes.
 31. The appliance complies with Regulation (EC) No 1935/2004 of 27/10/2004 on the materials in contact with food.
 32. Any changes to this product that have not been expressly authorised by the manufacturer may lead to the user's guarantee being rendered null and void.
 33. In the event that you decide to dispose of the appliance, we advise you to make it inoperative by cutting off the power cord. We also recommend that any parts that could be dangerous be rendered harmless, especially for children, who may play with the appliance or its parts.
 34. Packaging must never be left within the reach of children since it is potentially dangerous.



35.  To dispose of product correctly according to European Directive 2012/19/UE, please refer to and read the provided leaflet enclosed with the product.

DO NOT THROW AWAY THESE INSTRUCTIONS

DESCRIPTION OF THE APPLIANCE (Fig. 1)

- A Operating dial
- B Power base
- C Motor shaft
- D Bowl
- E Lid
- F Pusher
- G Blender lid cap
- H Blender cover
- I Blender
- J Chopping blade
- K Mixing blade
- L Blade support
- M Spatula
- N Whisking disc
- O Julienne blade
- P Slicing blade
- Q Chip cutting blade
- R Blade disc

WARNING

The appliance is fitted with a device to prevent it from operating if the lid (E) is not securely locked in place and the bowl (D) is not correctly inserted.

INSTRUCTIONS FOR USE

WARNING

Make sure that the appliance is unplugged and that the control dial (A) is set to "0" before cleaning it or fitting or removing attachments.



- Insert the motor shaft (C) into the special seating on the power base (B) (Fig. 2).
- Fit the bowl (D) onto the power base (B) and lock it into place turning it clockwise so that the tab in the bottom section of the handle clicks perfectly into the slit in the power base (Fig. 3).
- Fit the blade support (L) onto the motor shaft (C) inside the bowl (D) (Fig. 4).

Chopping, mixing or whisking

- To use the appliance as a chopper, fit the metal blade (J) onto the blade support (L), while for mixing, fit the plastic blade (K) by making sure that the slots inside the base of the blade are in line with the notches in the support and pressing the blade downwards (Fig. 5).
- To use the appliance to whisk egg whites or whip cream, fit the special attachment (N) onto the blade support (L), as illustrated in Fig. 6.

WARNING

Before starting the appliance, make sure that the bowl (D) and the disc (N) are perfectly clean and without any traces of butter or egg yolk.

- Cut the foods into small pieces and place them inside the bowl (D) or for mixing, insert the ingredients.
- Fit the lid (E) over the bowl (D) moving the mark inside the bowl (D) so that it is in line with the symbol . Block the lid (E) so it clicks into place by moving it clockwise  (Fig. 7).
- Plug the appliance into the mains power.
- Start the appliance, selecting the rotation speed of the blade using the operating dial (A).
The appliance is equipped with a control knob for adjusting the speed from a minimum to a maximum.

WARNING

When the appliance is used to for mixing or whipping-up, it is recommended to start with the lowest speed and then increase the speed. When used to chop, it is advisable to use the pulse function, turning the dial (A) anticlockwise to the "P" setting. For optimum use, press the button in short bursts (2/3 sec.).

- For smoother, finer chopped foods, remove the food, if necessary, from the sides of the bowl with a spatula, pushing it towards the centre.
- If it is necessary to add foods during appliance operation, use the opening in the lid (E). Push the foods down with the pusher (F) on its own (Fig. 8).
- To stop the appliance, turn the dial (A) to "0".

Slicing

WARNING

The blades are sharp; handle with care.

- Fit the required blade, the slicing blade (P), julienne blade (O) or chip blade (Q) into the blade disc (R) so that the hole in the blade is in the centre of the disc (Fig. 9).
- Fit the assembled blade support disc (R) on the motor shaft (C), gripping it by the relevant slots and keeping the blade so it is facing upwards (Fig. 10).
- Fit the lid (E) over the bowl (D) and proceed as described in the section "Chopping, mixing or whisking".

INSTRUCTIONS FOR BLENDER USE

- Fit the blender (I) onto the power base (B) and turn it clockwise until it clicks into place and so that the tabs on the blender fit perfectly into the slots in the power base (Fig. 11).
- Fit the lid (H) onto the blender (I) and press it gently down until fully inserted (Fig. 12).
- Insert the foods (prepared previously) through the opening in the lid, without exceeding the maximum level, which is marked on the blender (I) and then insert the plug (G) into the lid (H) pressing it gently downwards and turning it clockwise to lock it into place (Fig. 13).

Note: The plug (G) also has a measure.

- Switch on the appliance, selecting the blade rotation speed with the operating dial (A). The appliance is equipped with a control knob for adjusting the speed from a minimum to a maximum.

It is also possible to select pulse operation by turning the dial (A) anticlockwise to "P". For the best use of this function, only turn the dial for a very short time (2-3 sec.).

Note: For softer fruit and vegetables (e.g., bananas), start at slow speed and then increase the speed as required. For firmer fruit or vegetables (e.g., carrots), use the maximum speed.

- For a smoother result, switch the appliance off, unplug it, remove the lid (H) and, using a suitable cooking spatula, bring food stuck on the sides of the blender towards the center (I).
- Repeat the above steps for processing other foods.

Note: Never place more than 500g of firm fruit or vegetables into the blender at any one time.

Note: To prevent liquid spills, never place more than 1000 ml of soups, purées or other liquids into blender.

WARNING

The blades are sharp; handle them with care.

Remove the protections from the metal blade before use.

Never add foods over the maximum level marked on the bowl .

Make sure that the lid is firmly locked into place before starting the appliance.

Never operate the appliance for more than 10 minutes at a time. Wait at least 30 minutes before operating it again.

Never remove foods from the sides of the bowl or the blender while the appliance is operating. Always switch off the appliance and unplug it from the mains power.

To prevent accidents or damage to the appliance, always keep hands and cooking utensils well away from moving blades or discs.

Do not use your fingers to remove food from the sides of the bowl while the appliance is functioning. Always use a suitable cooking spatula.

Never add liquids to mix together chopped foods when using the bowl.

Never press foods into the opening in the lid using your hands. Always use the food presser.

Always fit the lid before starting the blender.

Before blending warm liquids, always remove the blender filler cap. Never place hot liquids inside the blender.

CLEANING

WARNING

NEVER PLACE THE APPLIANCE BODY, PLUG OR POWER CORD IN WATER OR OTHER LIQUIDS; ALWAYS WIPE CLEAN WITH A DAMP CLOTH.

WARNING

ALWAYS UNPLUG THE POWER CORD FROM THE ELECTRICITY MAINS BEFORE FITTING OR REMOVING SINGLE ATTACHMENTS OR BEFORE CLEANING THE APPLIANCE.

WARNING

The blades are extremely sharp. Always handle them with care.

- Remove all of the attachments used, working in the opposite order to the way they were fitted.
- All attachments can be washed in the top rack of the dishwasher, at a maximum temperature of 50°C/ 122°F.
- Wipe the power base (B) clean with a slightly damp cloth.

IMPORTANT INFORMATION FOR CORRECT DISPOSAL OF THE PRODUCT IN ACCORDANCE WITH EC DIRECTIVE 2021/19/UE



At the end of its working life, the product must be not disposed of as urban waste.

It must be taken to a special local authority differentiated waste collection centre or to a dealer providing this service.

Disposing of a household appliance separately avoids possible negative consequences for the environment and health deriving from inappropriate disposal and enables the constituent materials to be recovered to obtain significant savings in energy and resources. As a reminder of the need to dispose of household appliances separately, the product is marked with a crossed-out wheeled dustbin.

WARRANTY

PLEASE AFFIX YOUR RECEIPT/PROOF OF PURCHASE HERE.

IN THE EVENT OF A CLAIM UNDER THIS WARRANTY THE AFORESAID RECEIPT/PROOF OF PURCHASE MUST BE PRODUCED TOGETHER WITH THIS WARRANTY.

Model number	(Lot number:)
Product name	
Date of purchase	
Place of purchase	

1. The party selling the product ("the seller") to the original purchaser of this product ("the customer") hereby warrants that this product will be of good quality and, in good working order and, free of defects and suitable for its intended purpose under normal household use, for a period

- of 1 (one) year from the date of purchase ("warranty period") of this product.
2. In the event that the warranty period has not lapsed and the product is not of a good quality, or in good working order or, is defective or is not suitable for its intended purpose under normal household use, the customer may, subject to paragraph 3 below, return the product to the seller and have the following options available:
 - 2.1 Within the first 6 (six) months of the warranty: to receive a refund of the actual price paid or exchange the product for the same or similar product of the same purchased value;
 - 2.2 Within the second 6 (six) months of the warranty: to have the product exchanged for the same or similar product of the same purchased value.
 3. The seller will not replace the product or refund the customer in terms of this warranty if the product:
 - 3.1 has been altered contrary to the instructions provided in the product manual;
 - 3.2 has been misused, abused or tampered with;
 - 3.3 is defective or not in working order due to ordinary wear and tear;
 - 3.4 is damaged resulting from the customer's gross negligence, recklessness, malicious behavior or criminal conduct;
 - 3.5 has been utilised for commercial use.
 4. This warranty applies only to the product that has been purchased from the seller and not to any expendables attached to or installed on the product by the customer.
 5. Any claim in terms of this warranty must be supported by the original proof of purchase.
 6. Note that the exchange item will only carry the balance of the warranty period as from the original date of purchase.
 7. Spares:
- Selected spares can be purchased from:

ServiceTec
 10 Saddle Drive
 Woodmead Office Park
 Woodmead

Email: spares.za@delonghigroup.com
 Tel: +27 11 474 0153