

# KENWOOD

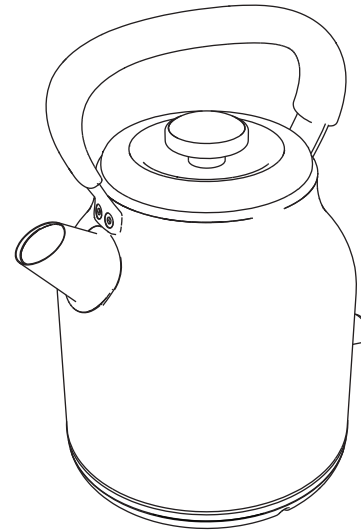
English

3 - 9

## Type ZTM45

---

instructions for use



628510500 - REV.0 03/12/2020

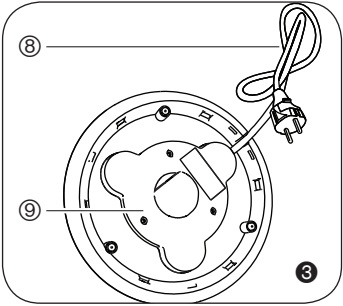
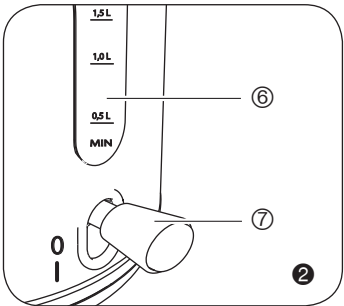
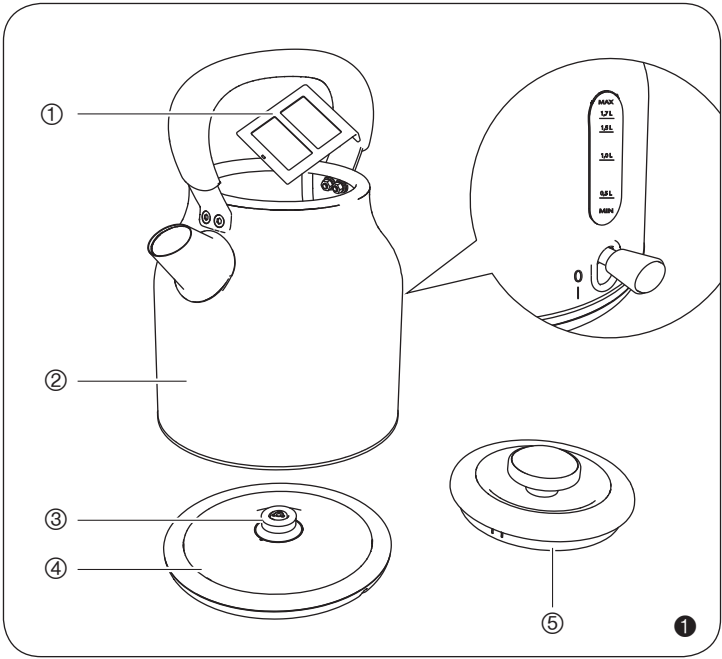
### Kenwood Ltd

New Lane  
Havant  
Hampshire  
PO9 2NH

[kenwoodworld.com](http://kenwoodworld.com)

© Kenwood Ltd 2018





# English

**Please refer to the first page, where you will find illustrations**

## With regard to this manual

This appliance is made in conformity with appropriate European Regulations in force, to protect the user wherever possible from potential hazards. Even if you are familiar with this type of appliance, carefully read this manual before use. Only use this appliance for the purpose it is designed for in order to prevent accidents and damage. Keep this manual close by for future consultation. If you should decide to give this appliance to other people, remember to also include these instructions.

## Intended use

You can use the appliance for boiling water only. No other use of the product is allowed by the manufacturer, which is exempt from any liability for all types of damages caused by improper use of the appliance. Improper use also results in any form of warranty being forfeited.

## Safety warnings

### **Read these instructions carefully.**

- This appliance is designed solely for household and similar uses such as:
  - in cooking areas used by personnel of shops, offices and other professional environments;
  - on farms;
  - guests of hotels, motels and other residential environments;
  - bed and breakfast type of environments.
- We decline any responsibility resulting from misuse or any use other than those covered in this booklet.
- It is recommended to keep the original packaging, because the free repair service does not cover failures caused by inadequate packaging of the product when shipped to an authorised Service Centre.
- Using accessories not recommended or not supplied by the manufacturer of the appliance may entail risks of fire, electric shock or injuries to people and will invalidate

your warranty.

- The appliance complies with Regulation (EC) No 1935/2004 of 27/10/2004 on the materials in contact with food.
- This appliance can be used by children aged from 8 years and above and persons with reduced physical, sensory or mental capabilities or lack of experience and knowledge if they have been given supervision or instruction concerning use of the appliance in a safe way and understand the hazards involved.
- Children shall not play with the appliance or its components.
- Do not let the power cord hang in a place where it could be grasped by a child.
- Do not leave the packaging near children because it is potentially dangerous.
- In the event that this appliance is to be disposed of, it is suggested that the power cord is cut off. It is also recommended that all potentially dangerous components including the power cord are rendered harmless to prevent personal injury.
- Unplug the appliance when the kettle is not being used and before all maintenance and cleaning operations.
- Always turn off the appliance and unplug the power cord from the electrical outlet before filling the kettle with water. Do not go past the MAX level.
- Do not immerse the appliance in water or other liquids.
- Never let the kettle base, power supply base, cord or mains plug come into contact with

water: risk of short circuit and / or electric shock.

- Never leave the appliance unattended when it is connected to the power supply.
- The appliance must be used and rested on a stable heat resistant surface.
- The appliance is not to be used if it has been dropped, if there are visible sign of damage or if it is leaking. Do not use the appliance if the power cord or the plug are damaged, or if the appliance is faulty. To prevent any accident, all repairs, including the replacement of the power cord, must be carried out by an Authorised Service Centre or, in any case, by qualified personnel.
- Place the appliance in an adequately illuminated environment and with the power outlet easily accessible.
- Warning: do not use the appliance on an inclined surface.
- Warning: make sure the appliance is turned off before removing the kettle from the power base.
- Do not lift the appliance by grasping its body or the power base. Hold it only by the handle.
- Only use the power supply base supplied: keep the base clean and dry.
- Avoid spilling water on the appliance connector.
- Never fill the appliance beyond the maximum limit; there is a risk of spurts of the kettle boiling over.
- Make sure the lid is correctly placed on the kettle before turning on the unit.
- Do not operate the kettle dry, without water.

- Never fill the kettle with hot or boiling water.
- The cable must not touch any hot parts of the appliance.
- The product cannot be powered by external timers or with separate remote control systems.
- Do not touch the hot surfaces. Only hold by the handle and knob provided for the purpose.
- Do not use sparkling (carbonated) water.
- Never use the appliance outdoors.
- Never put the appliance on or near gas stoves or electric hotplates.
- Do not expose the appliance to outdoor elements (rain, sun, etc.).
- Before cleaning the appliance always unplug it and allow it cool down. Clean only with a non-abrasive cloth that has been slightly dampened with water, adding a few drops of mild, non-aggressive detergent (never use solvents that damage plastic).
- Never fill the appliance beyond the maximum limit; there is a risk of spurts of boiling water.
- Be careful not to come into contact with the hot water while preparing beverages or cleaning; danger of burns.
- When filling the kettle, avoid contact with the steam that escapes from the spout and lid.
- Warning: do not remove the lid while the water is boiling.
- Lift the kettle by its handle.
- During use, the appliance heats up. Avoid contact with the kettle.
- **Save these instructions for future reference.**

## Description of the appliance

- ① Filter
- ② Kettle
- ③ Connector
- ④ Power supply base
- ⑤ Lid
- ⑥ Water level indicator (Max and Min)
- ⑦ On lever / Operation indicator
- ⑧ Power cord + Plug
- ⑨ Cord storage device

## Preliminary phases for use

### Using the appliance for the first time

Before connecting the appliance to the power supply, make sure that the voltage shown on the rating plate on the bottom of the appliance corresponds to the local mains voltage. Place the appliance on a horizontal, stable and heat resistant surface.

- **Do not place the appliance or power cord close to or on top of hot electric or gas cookers, or close to a microwave oven.**
- **Prevent the cord from protruding beyond the edge of the table or surface. Prevent children from grabbing the cord, in this way tipping over the appliance.**
- **If the power cord is too long, wrap it around the power supply base cord storage device ③. The cable must not touch any hot parts of the appliance.**
- **Position the appliance so that children cannot reach the hot parts.**

## Instructions for use

- **The water filling and emptying operations must be performed with the kettle separated from the power supply base.**
- **Before connecting or disconnecting the appliance from the electrical outlet, check that the ON/OFF lever is in the “0” position.**
- **Do not use the kettle without water.**

### Important

- Boil the water the first time the appliance is turned on. Empty and rinse the kettle. Repeat the operation two or three times.  
Fill the kettle with cool tap water to the desired level.
- Do not go past the MAX level.
  - 1 Replace the lid.
  - 2 Place the kettle on the power supply base ④.
  - 3 Insert the plug into the socket, which must be earthed.
  - 4 Lower the ON lever ⑦ to position “1”. The operation light ⑦ turns on. When the water boils, the appliance automatically turns off. The ON lever returns to “0” and the operation light turns off.
- **Do not open the kettle lid while the water is boiling. Danger of splashing from boiling water.**

Make sure that the kettle is off before lifting it from its power supply base.

- 5 Grasp the kettle by its handle.
- 6 Lift the kettle away from its power supply base.
- 7 Pour the water into the cups.
- 8 Empty any water remaining in the kettle after every use.

If you turn on the kettle when the water inside is below the level indicated by Min, the appliance turns off automatically. To boil water again, wait a few seconds to allow the boil dry protection device to reset.

### Important

- If the kettle should turn on and off during use, or if it turns off before coming to the boil, check the appliance for an accumulation of scale (see "Removing lime").
- Any drops of water under the kettle is entirely normal: it is only condensation.

## Cleaning the appliance

- **All cleaning operations described below must be performed with the appliance off and with the mains plug disconnected from the socket-outlet.**
- **Regular maintenance and cleaning preserve and keep the appliance efficient for a longer period of time. Never wash any part of this appliance in the dishwasher. Do not use direct jets of water.**
- **All cleanings operations must be performed when the appliance is cold.**

Cleaning the kettle and power supply base

- **Do not wash the appliance in a dishwasher.**

Clean the appliance using a damp, non-abrasive cloth so as to not damage the body. Dry thoroughly with a soft cloth.

### Filter

- 1 Open the lid.
  - 2 Remove the filter from the kettle.
  - 3 Wash the filter under running water. If necessary use a soft brush.
  - 4 Rinse thoroughly.
  - 5 Place the filter in the kettle.
- Alternatively you can leave the filter in the kettle and proceed with the descaling as described in the next paragraph.

### Removing lime

Good maintenance and regular cleaning preserve and keep the appliance operating efficiently for a

longer period of time, considerably limiting the risks of lime deposits forming inside the appliance. However, should your kettle fail to work properly as a result of the frequent use of hard, high calcium content water, you may perform a decalcification procedure to restore its operational efficiency. For this purpose you must use only citric acid-based decalcifying products. This product is easily found at the technical Service Centres. Kenwood does not accept any responsibility whatsoever for damage to components inside the appliance caused by the use of non-compliant products containing chemical additives. Should you need to decalcify your appliance, please follow the instructions which come with the decalcifying product.

## Putting out of service

If the appliance is put out of service, electrically disconnect it.

- 1 Cut the power cord.

In the case of scrapping, you must separate the various materials used in making the appliance and dispose of them based on their composition and on the legal provisions in force in the country of use.



## Service and customer care

- If you experience any problems with the operation of your appliance, before requesting assistance visit [www.kenwoodworld.com](http://www.kenwoodworld.com).
- Please note that your product is covered by a warranty, which complies with all legal provisions concerning any existing warranty and consumer rights in the country where the product was purchased.
- If your Kenwood product malfunctions or you find any defects, please send it or bring it to an authorised KENWOOD Service Centre. To find up-to-date details of your nearest authorised KENWOOD Service centre, visit [www.kenwoodworld.com](http://www.kenwoodworld.com) or the website specific to your Country.
- Made in China.



### **IMPORTANT INFORMATION FOR CORRECT DISPOSAL OF THE PRODUCT IN ACCORDANCE WITH THE EUROPEAN DIRECTIVE ON WASTE ELECTRICAL AND ELECTRONIC EQUIPMENT (WEEE)**

At the end of its working life, the product shall not be disposed of as urban waste.

It shall be taken to a special local authority differentiated waste collection centre or to a dealer providing this service.

Disposing of a household appliance separately avoids possible negative consequences for the environment and health deriving from inappropriate disposal and enables the constituent materials to be recovered to obtain significant savings in energy and resources. As a reminder of the need to dispose of household appliances separately, the product is marked with a crossed-out wheeled dustbin.