

## Warranty

We grant a **three-year warranty** from the date of purchase.

This product was manufactured using the latest production techniques and has undergone thorough quality control inspection. We guarantee that the product is in perfect condition.

We will remedy all defects in workmanship or materials within the warranty period. In order for the warranty to be granted, all warranty claims must be accompanied by proof of purchase from Tchibo or from an authorised Tchibo distribution partner.

If, contrary to our expectations, a defect is found, please contact our customer care service at the following e-mail address:

**service@tchibo.de**

Our customer consultants will be pleased to advise you on further procedure.

Damage due to improper use, as well as worn parts and consumables, are not covered by the warranty.

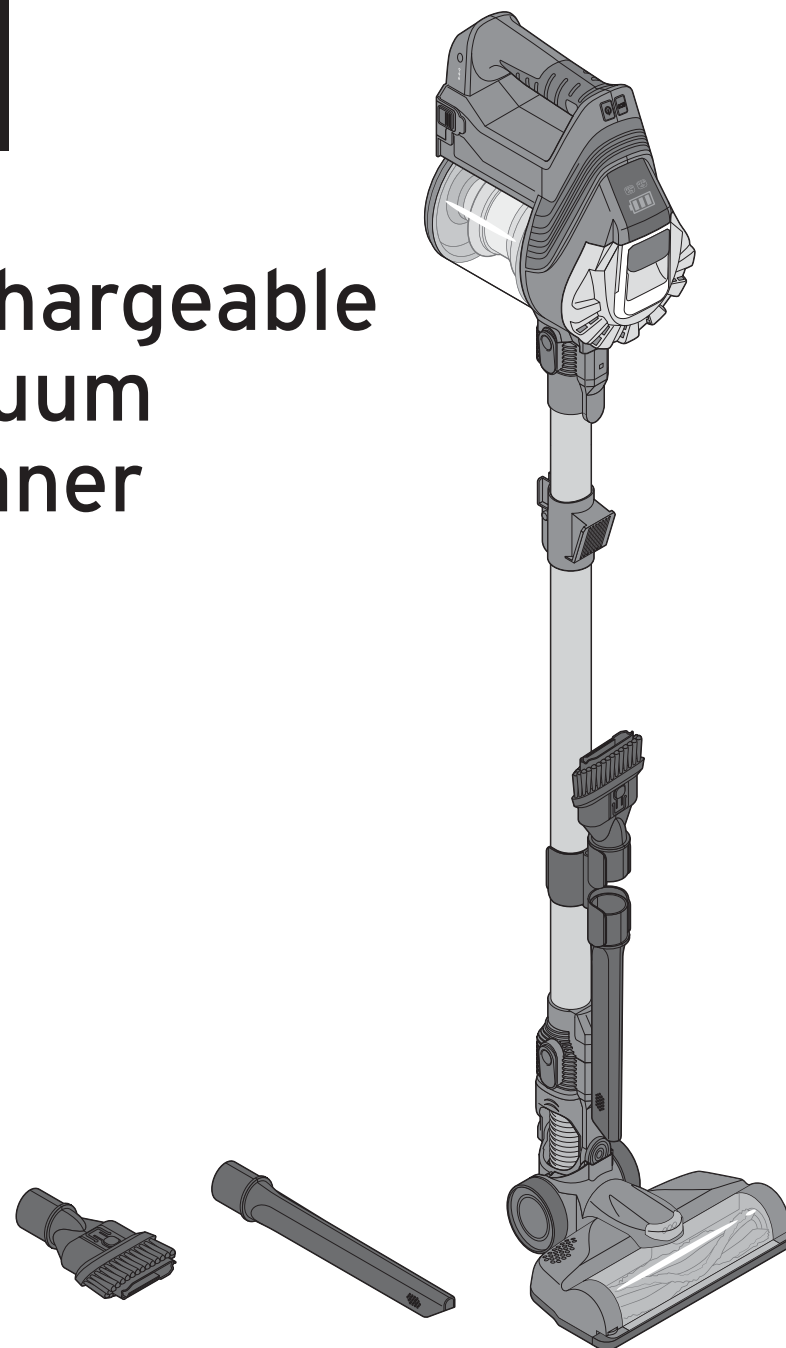
Please have the product number at hand in case of any queries.

This warranty does not restrict statutory warranty rights.

**Product number: 366 942**



# Rechargeable Vacuum Cleaner



**en Instructions for use and warranty**

Tchibo GmbH D-22290 Hamburg • 97978FV01X001X • 2018-08

## Dear Customer

Your new rechargeable vacuum cleaner is equipped with a powerful motor. It is brilliant for quick bits of cleaning here and there.

Hard-to-reach places can be easily accessed using the handy crevice nozzle. The upholstery brush is especially gentle on your sofas and armchairs.

We hope you enjoy using your new rechargeable vacuum cleaner.

## Your Tchibo Team



[www.tchibo.de/instructions](http://www.tchibo.de/instructions)

(Please enter the product number in the box labelled "Bedienungsanleitungssuche" and click on "Suchen".)

## Contents

<b>3 Safety warnings</b>	14 Cleaning the motor protection and HEPA filters
<b>3 About these instructions</b>	16 Cleaning the casing and attachments
<b>6 At a glance (features)</b>	17 Storage without the wall mount
<b>7 Charging the battery</b>	<b>18 Disposal</b>
<b>8 Assembling the vacuum cleaner</b>	18 Removing the rechargeable battery
<b>10 Mounting the wall mount</b>	<b>19 Technical specifications</b>
<b>10 Use</b>	<b>19 Problems / solutions</b>
<b>11 Cleaning</b>	<b>20 Warranty</b>
11 Emptying the dust collector	
11 Cleaning the floor head	
13 Cleaning the air outlet filter	

## Technical specifications



Model:	366 942
<b>Mains adapter</b>	
Model:	RKGSDC2700500
Input:	100-240 V ~ 50/60 Hz
Output:	27 V --- 500 mA
Protection class:	II
<b>Rechargeable battery</b>	
Type:	Lithium-ion rechargeable battery
Model:	ST07-6S1
Voltage, capacity:	22.2 V ---, 2200 mAh
Battery element:	6 x 3.7 V ---, 2200 mAh
Charging time:	approx. 4.5 hours
<b>Vacuum cleaner</b>	
Suction power:	max. 130 W
Nominal voltage:	22.2 V ---
Sound level:	75 dbA (measured 100 cm from the motor block, idle state)
Vacuum:	max. 5.5 kPa
Operating time:	approx. 20 min. (approx. 40 min. in ECO mode)

## Problems / solutions

• Not working	• Is the battery charged up?
• Poor suction	• Is the dust collector full?
	• Are the filters very dirty?
	• Is the battery sufficiently charged up?
• Dust leakage	• Is the dust collector full?
	• Has the dust collector been inserted correctly?
• The brush inside the floor head does not rotate.	• Has the floor head been firmly fitted?
	• Is the brush very dirty?

## Disposal

The product, its packaging and the rechargeable battery supplied have been manufactured from valuable materials that can be recycled. Recycling reduces the amount of refuse and helps to preserve the environment.

Dispose of the **packaging** in the proper manner. Make use of the local facilities provided for collecting paper, cardboard and lightweight packaging.



**Appliances** marked with this symbol must not be disposed of along with normal household refuse!

You are legally bound to dispose of old appliances separately from household waste. Information about collection points where old devices can be disposed of free of charge is available from your local authorities.



**Standard batteries and rechargeable batteries** must not be disposed of along with household refuse!

You are legally bound to dispose of flat batteries and rechargeable batteries at a local authority collection point or to return them to a battery retailer.

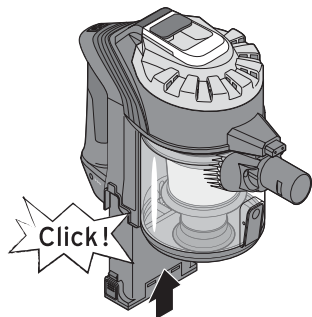
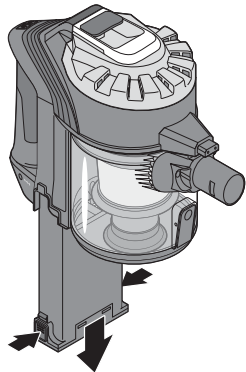
### Removing the rechargeable battery

If the rechargeable battery is worn out or defective, or if you wish to dispose of the entire appliance, first remove the rechargeable battery and dispose of it in accordance with statutory regulations.

▷ Press the battery casing release and pull the battery down and off.

▷ To insert a new battery, slide it onto the motor block from underneath until you hear and feel it click into place.

New rechargeable batteries can be ordered from the customer care service for a charge (see "Warranty").



## About these instructions

This product is equipped with safety features. Nevertheless, read the safety warnings carefully and only use the product as described in these instructions to avoid accidental injury or damage.

Keep these instructions for future reference. If you pass this product on to another person, remember to give them these instructions.

Symbols in these instructions:



This symbol warns you of the danger of injury.



This symbol warns you of the danger of injury caused by electricity.

The term **DANGER** warns of potential severe injury and danger to life.

The term **WARNING** warns of injury and severe material damage.

The term **CAUTION** warns of minor injury or damage.



This indicates additional information.

## Safety warnings



### Intended use

- The rechargeable vacuum cleaner has been designed to vacuum dust, dirt, crumbs, etc. in dry indoor rooms. It is not suitable for cleaning larger areas or for continuous operation.
- The product is suitable for private use and is not suitable for commercial purposes.

### **DANGER to children and people with a restricted capability of operating appliances**

- This appliance may be used by children aged 8 and up and by people with reduced physical, sensory or mental capacities or a lack of sufficient experience and/or knowledge, provided that they are supervised or have been trained in the safe use of

the appliance and understand the potential dangers. Cleaning and maintenance must not be carried out by children without supervision. Children must not be allowed to play with the appliance.

- Keep the packaging material away from children. There is a risk of suffocation!

### **DANGER due to electricity**

- Never immerse the appliance or mains adapter in water or other liquids as this poses a risk of electric shock. Do not touch the mains adapter while your hands are wet.
- Only use the mains adapter provided, or the vacuum cleaner may be damaged.

- Only connect the article to a properly installed wall socket with a voltage that complies with the technical specifications of the mains adapter.
- Ensure that the wall socket is easily accessible, so that the mains adapter can be disconnected quickly if need be. Route the mains cord in such a way that it cannot be tripped over.
- Remove the mains adapter from the wall socket if you are not going to use the vacuum cleaner for any length of time (e.g. while on holiday).
- Do not operate the appliance if the vacuum cleaner itself, its mains adapter or connecting cord show any sign of damage or if the vacuum cleaner has been dropped.
- Do not disassemble the appliance any more than instructed in this manual. Do not make any modifications to the product. Only have repairs to the appliance, mains adapter or connecting cord carried out by a specialist workshop, or contact the customer care service.
- We have provided mounting material (screws and wallplugs) for wall mounting. The fittings provided are suitable for standard, solid masonry. Before mounting, find out which mounting material is suitable for your wall. Before drilling, make sure that there are no pipes or electrical wiring

located behind the wall where the holes will be drilled.

**WARNING - hazards resulting from misuse**

- Never vacuum up the following:
  - glowing ash, cigarette butts, matchsticks, etc.: fire hazard!
  - toner for printers: fire or explosion hazard!
  - caustic or toxic substances (e.g. acid, asbestos or asbestos dust, etc.): danger to health!
  - liquids (in particular liquid carpet cleaners): danger of short circuit!
  - pointed, hard objects (splinters of glass, nails, etc.): these can destroy the filter.
  - plaster, cement, dust from drilling, construction waste, make-up, etc.: they could block the filter and damage the appliance.
  - cables, wiring, etc.: the insulation could be damaged or they could be rolled up by the brush and the appliance be damaged.

**WARNING - risk of injury**

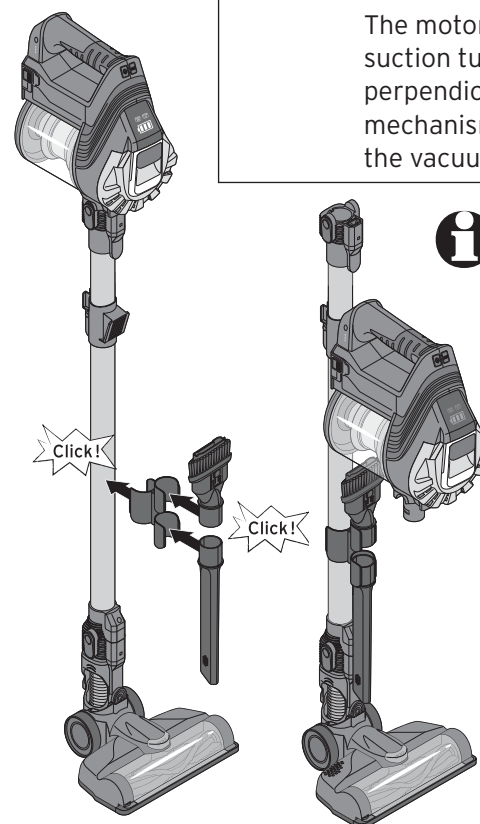
- Never use the vacuum cleaner on people or animals. Always keep hair, parts of the body and items of clothing such as shoe laces and scarves well away from the suction opening. Never attempt to remove a blockage when the vacuum cleaner is operating.

**Storage without the wall mount**

1. Empty the dust collector.
2. Attach the accessory holder to the suction tube.
3. Slide the upholstery brush and crevice nozzle into the accessory holder.
4. Attach the floor head to the suction tube if this is not already the case.
5. Press the release for the suction tube and disconnect the motor unit from the suction tube.
6. Tilt the suction tube forward so that it is perpendicular to the floor head. You should hear and feel the locking mechanism click into place.

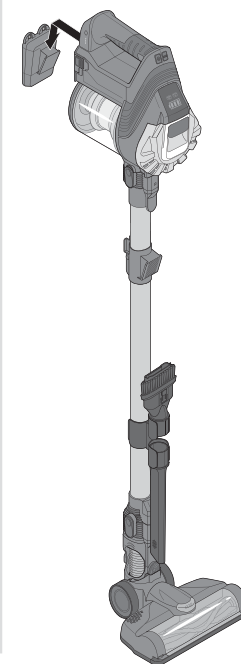
**CAUTION - material damage**

The motor unit must not be attached to the suction tube when you lock the suction tube perpendicular to the floor head with the locking mechanism to store it away. Doing so may cause the vacuum cleaner to fall over.

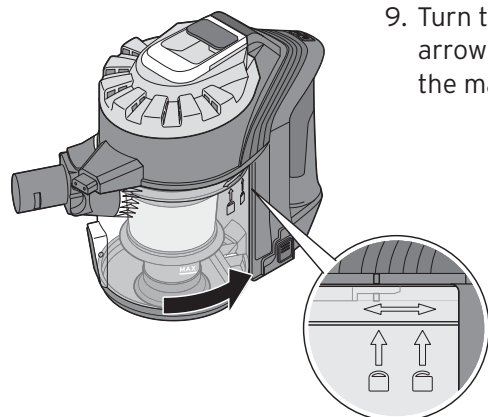



**i** You can remove the accessory holder during use or leave it on the suction tube, whichever is most convenient for you.

**Storage in the wall mount**



7. Attach the motor unit to the holder on the suction tube. You can now store the rechargeable vacuum cleaner away.



9. Turn the dust collector clockwise so that the arrow above the  symbol is aligned with the mark on the motor unit.

The HEPA filter should be replaced every 6 months for hygiene reasons.

You can order a new HEPA filter for a fee from the customer care service (see "Warranty").

### Cleaning the casing and attachments

- ▷ Use a slightly dampened, lint-free cloth to clean the casing and attachments.
- ▷ If necessary, remove dirt from the upholstery brush.

- Always switch the appliance off before removing or connecting the suction tube or an attachment.
- Disconnect the appliance from the mains adapter before using or cleaning the vacuum cleaner and before removing the dust collector.
- The metal parts of the appliance get very hot during use. Do not touch them.
- Take extra care when using the appliance on stairs.
- Put the appliance away after use so that it cannot be tripped over.
- Do not attempt to open the battery casing. If the battery is defective, dispose of the entire battery casing at a collection point where the battery will be disposed of properly.
- The rechargeable vacuum cleaner may only be used when fully assembled.

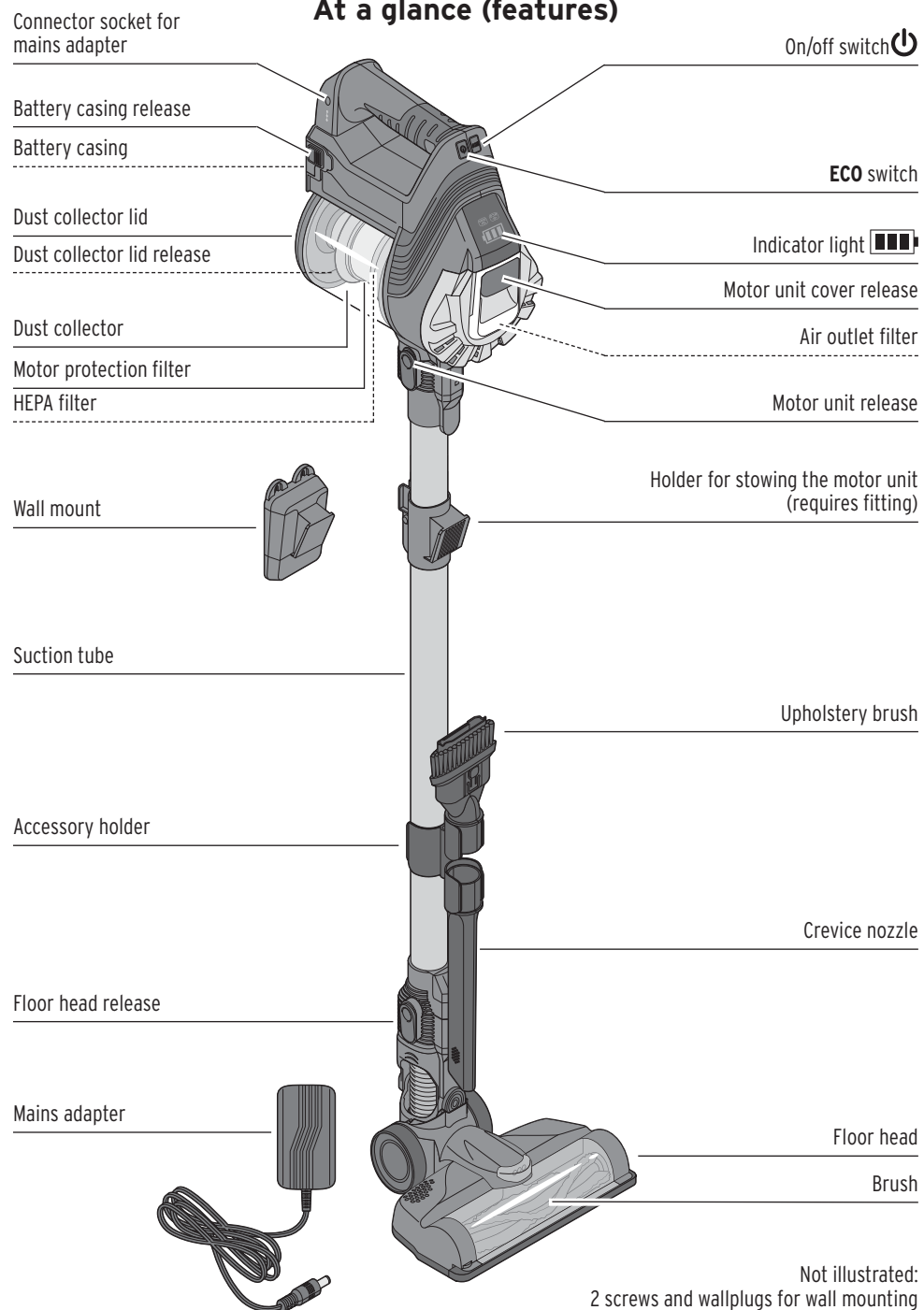
### DANGER - risk of fire

- Do not use the appliance in the vicinity of highly flammable materials. Do not vacuum up sharp-edged objects or highly flammable substances such as matches or ashes. Do not use the appliance to vacuum up small objects.
- Rechargeable batteries must not be taken apart, thrown into fire or short-circuited.
- Only use the same type of rechargeable battery or its equivalent (see the section "Technical specifications").

### CAUTION - material damage

- Do not overheat the vacuum cleaner. Switch it off after a maximum of 20 minutes and let it cool to room temperature. Ensure that the airing vents on the appliance are not covered by dust or similar substances.
- If an object like the fringes of a rug or a piece of cloth gets jammed in the brush, switch off the appliance immediately and remove the object.
- The appliance must not be operated outdoors or in rooms with high humidity. Do not store it in rooms exposed to moisture such as cellars or garages.
- Do not put any objects into the openings on the appliance.
- Always use the rechargeable vacuum cleaner with the filters fitted.
- Only use the original parts.
- Do not use abrasive or caustic products or hard brushes, etc. for cleaning.
- Protect the appliance from impacts, falls, dust, moisture, direct sunlight and extreme temperatures. Protect the rechargeable battery in particular from excessive heat.
- Clean the rechargeable battery and appliance contacts when needed.  
Danger of overheating!

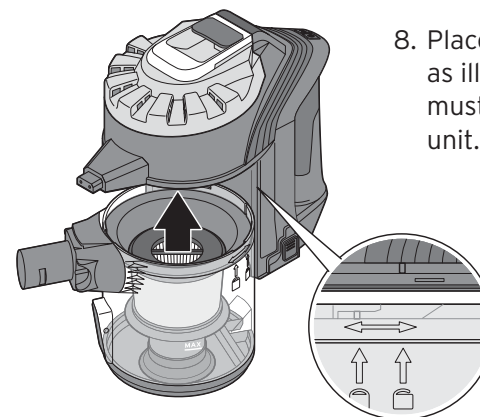
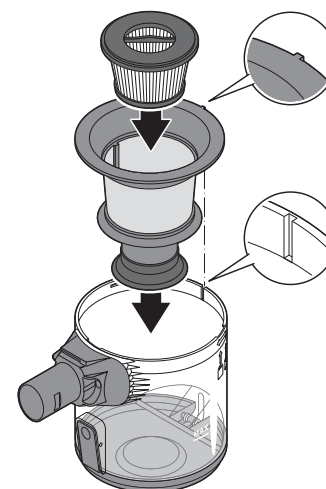
## At a glance (features)




6

6

5. Wash the filters with clear water **without** adding any cleaning agents. Let the filters dry completely before inserting them again.
6. Replace the motor protection filter first. The tab must slot into the opening at the front of the dust collector.
7. Insert the HEPA filter in the motor protection filter and press it down.



8. Place the dust collector onto the motor unit as illustrated. The arrow above the  symbol must be aligned with the mark on the motor unit.


15

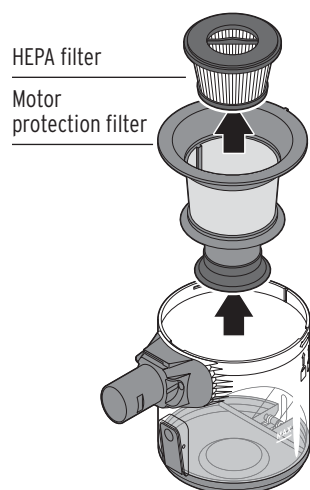
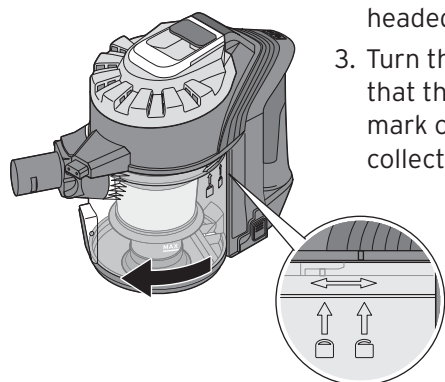
15

## Cleaning the motor protection and HEPA filters

The HEPA filter is a high-performance filter that filters particles of all kinds, even bacteria.

The motor protection and HEPA filters must be cleaned regularly. When you should clean the filters depends on how often you use the appliance.

1. Press the suction tube/attachment release to disconnect the suction tube or attachment from the motor unit.
2. Empty the dust collector (refer to the section headed "Emptying the dust collector").
3. Turn the empty dust collector anticlockwise so that the arrow above the  symbol points to the mark on the motor unit and remove the dust collector.



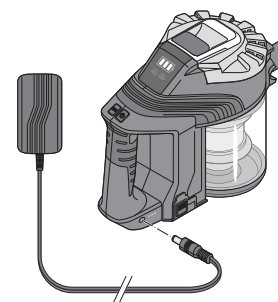
4. Remove the motor protection filter and pull the HEPA filter out of the motor protection filter.

## Charging the battery

- ▷ Remove all the packaging material before using the appliance for the first time.

**i** For charging, the appliance must be switched off and the suction tube and attachments removed. The battery casing must be correctly positioned in the appliance.

The rechargeable battery is not fully charged upon delivery. To reach the battery's maximal charging capacity, charge the appliance up fully before using it for the first time.



1. Insert the connecting plug of the mains adapter into the connection socket on the side of the rechargeable vacuum cleaner.
2. Plug the mains adapter into a wall socket.

The indicator light flashes blue while it is charging. Once the indicator light lights up blue continuously and all the bars on the indicator light are visible, this means the battery is fully charged.

The indicator light  also serves as a charge level indicator.

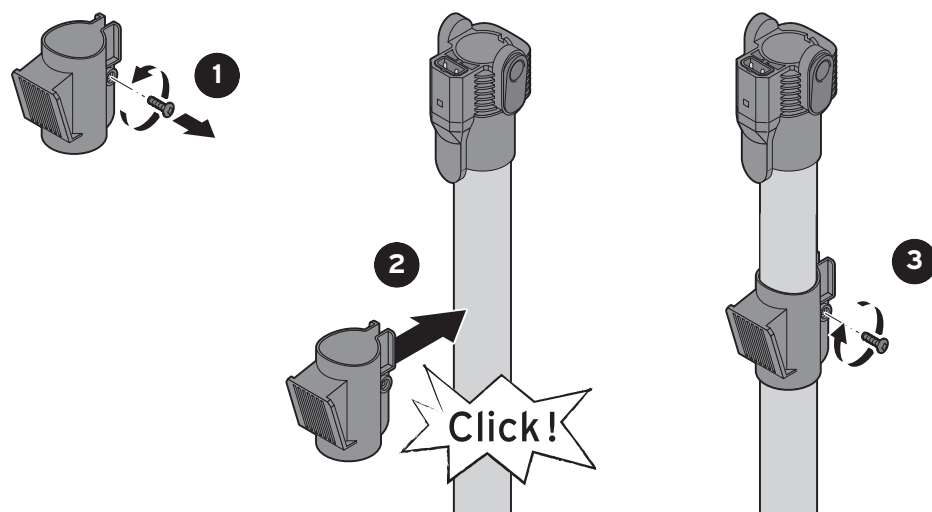
You can read off the remaining battery charge from the number of bars on the indicator light. When no more bars are visible, you must charge the battery.

The charging time is approx. max. 4.5 hours. The operating time of the vacuum cleaner with a fully charged battery is approx. 20 minutes or 40 minutes in ECO mode.

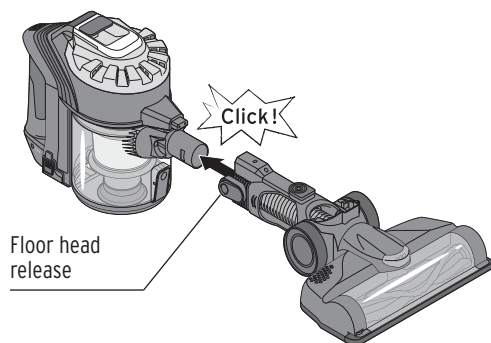
- i**
- The battery casing will become warm during charging. This is normal and not a fault.
  - If used regularly, you should only charge the vacuum cleaner once the battery is flat and the vacuum cleaner has switched itself off automatically, or when the suction power decreases significantly.

## Assembling the vacuum cleaner

Before first use, attach the holder for stowing the motor unit.

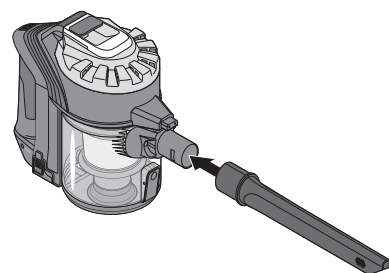


### Connect directly to the motor unit



#### Floor head

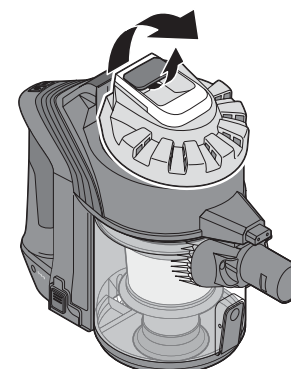
The floor head is suitable for all floors.



#### Crevice nozzle

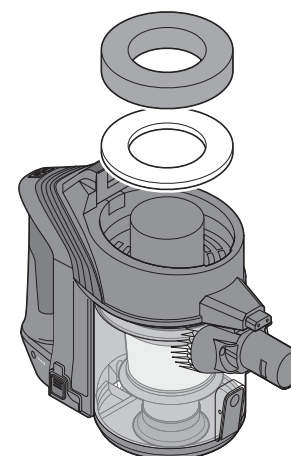
The crevice nozzle is suitable for narrow gaps such as between radiator bars, etc.

## Cleaning the air outlet filter

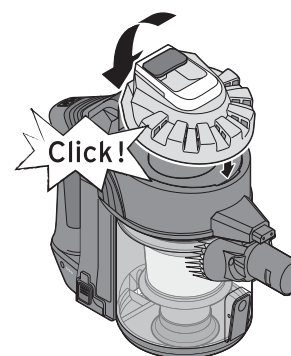


The air outlet filters must be cleaned regularly. When you should clean the filters depends on how often you use the appliance.

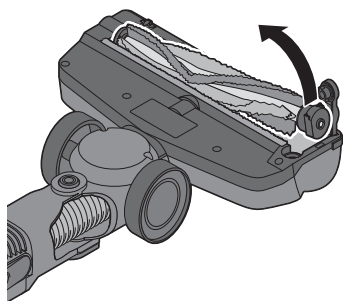
1. Press the suction tube/attachment release to disconnect the suction tube or attachment from the motor unit.
2. Pull up the release catch for the motor unit cover and remove the cover.



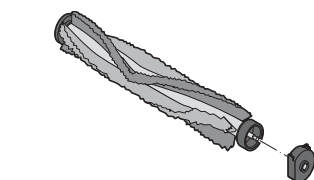
3. Remove the black and white filters.
4. Wash the filters with clear water **without** adding any cleaning agents. Let the filters dry completely before inserting them again.
5. Insert the white filter first and then the black filter.



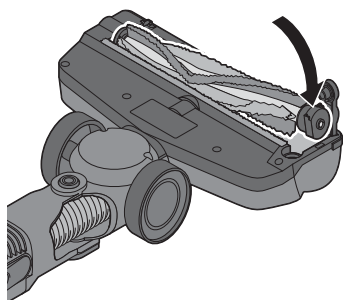
6. First attach the cover at the front and then press it down at the back where the release catch is located. You should hear and feel it click into place.



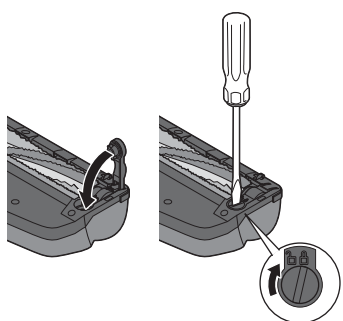
3. Lift one side of the brush as illustrated and pull it out of the holder.
4. Clean the brush and remove any dirt by hand.
5. Wipe over the brush mount with a slightly moistened, lint-free cloth and also remove any dirt from the soft bristles of the mount.




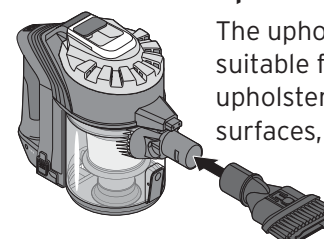
6. Replace the support as illustrated if it has worked loose from the brush axle.



7. Then replace the brush in its mount as illustrated.

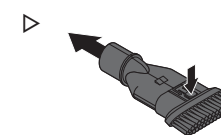


8. Close the cover and turn the lock button clockwise towards  as illustrated.



### Upholstery brush

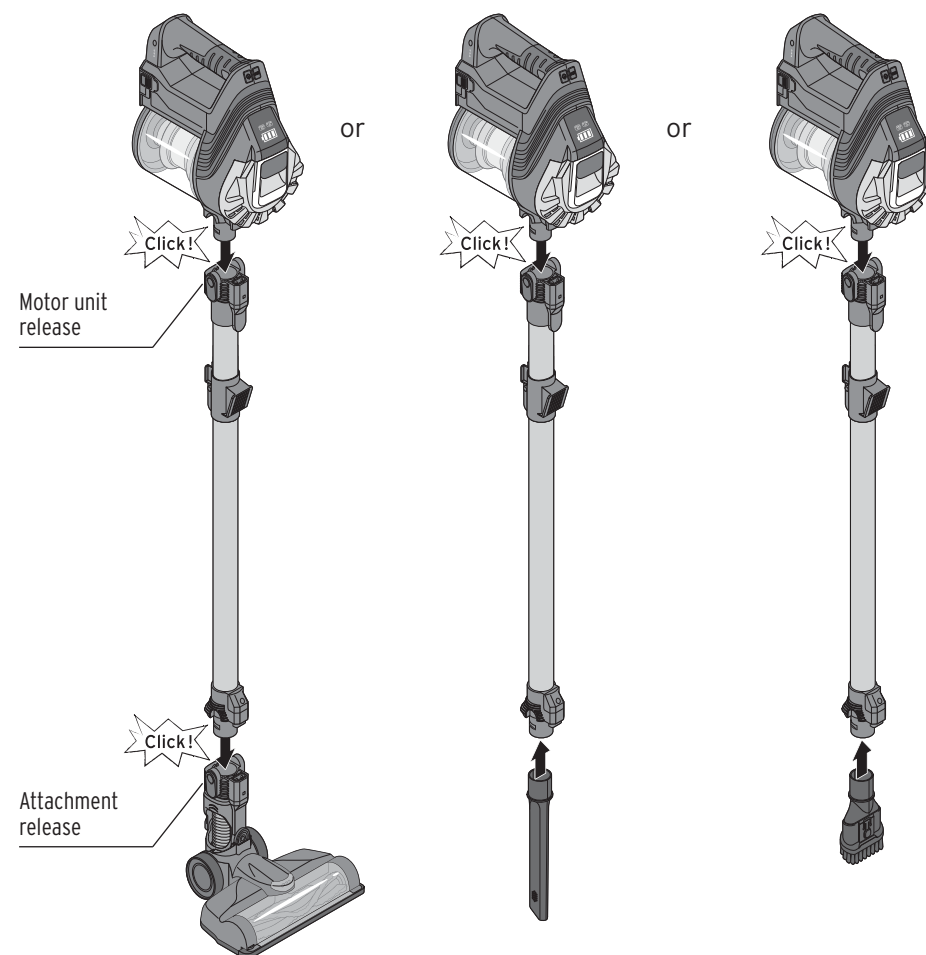
The upholstery brush is suitable for use on upholstered and sensitive surfaces, etc.



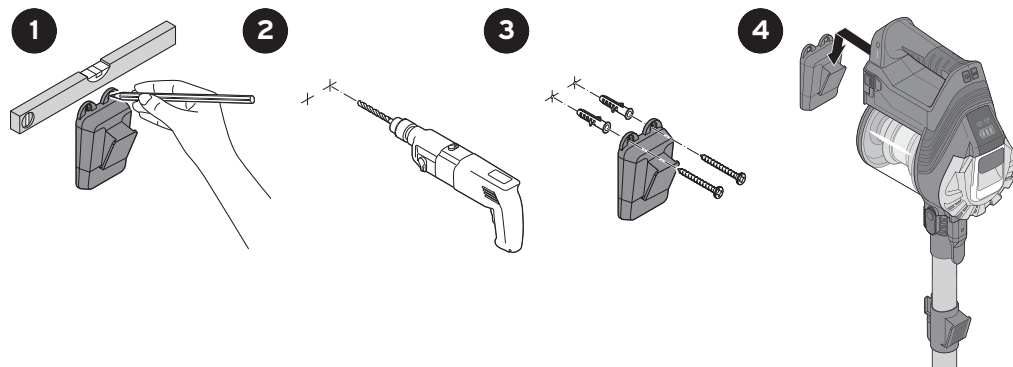
Press the button to extend the upholstery brush.

- ▷ Press it again to collapse the brush.

### Connecting to the motor unit with the suction tube as an extension



## Mounting the wall mount



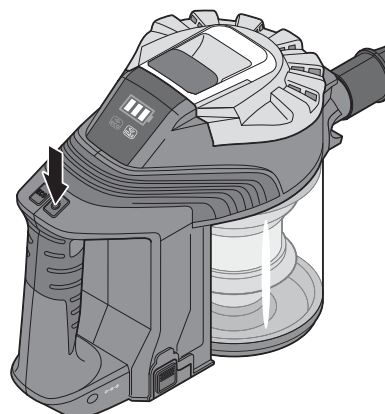
## Use

### Switching the vacuum cleaner on or off

- ▷ If you need the full suction power, press the on/off switch to switch it on.

The indicator light lights up blue.

The symbol lights up red.



- ▷ If you want to vacuum in energy-saving mode, also press the **ECO** button.

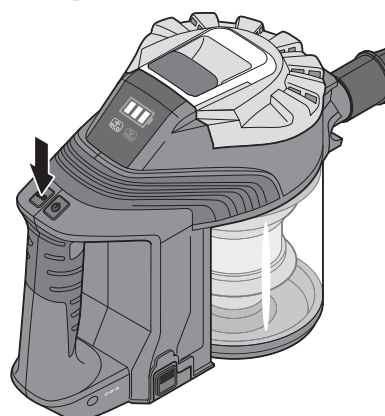
The symbol will go out and the symbol lights up green.

- ▷ If you do need to use full suction power, simply press the button again.

The symbol will go out and the symbol will light up red again.

- ▷ To switch the product off, press the on/off switch .

All the indicator lights will go out.



## Cleaning



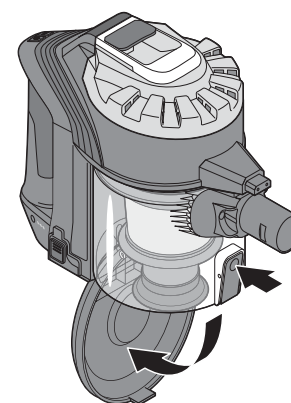
### WARNING - risk of injury

- Disconnect the appliance from the mains adapter before cleaning the vacuum cleaner or removing the dust collector.

### CAUTION - material damage

- Do not use the vacuum cleaner without a filter attached.
- Do not use any caustic, aggressive or abrasive products for cleaning.

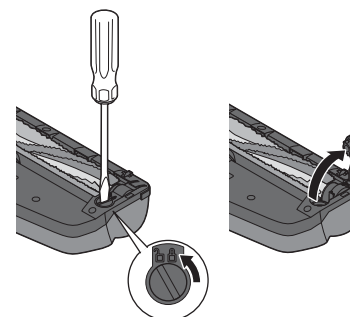
### Emptying the dust collector



When the dust collector is filled up to the **MAX** mark it must be emptied.

1. Press the suction tube/attachment release to disconnect the suction tube or attachment from the motor unit.
2. Hold the dust collector over a bin and press the dust collector lid release. The lid will open and the dust falls out.
3. Then close the lid again. You should be able to feel and hear it click into place.

### Cleaning the floor head



1. Press the floor head release, remove the floor head and place it down as illustrated.
2. Turn the locking button slightly anticlockwise towards - e. g. using a coin or small screwdriver - and lift the small cover.