

KENWOOD

English

3 - 7

Type CGM16

instructions for use



4095100600 - REV.0 03/12/2020

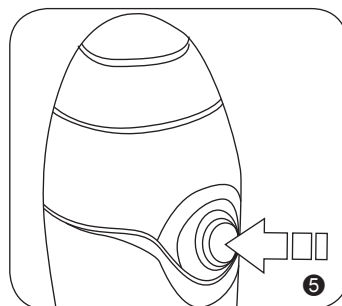
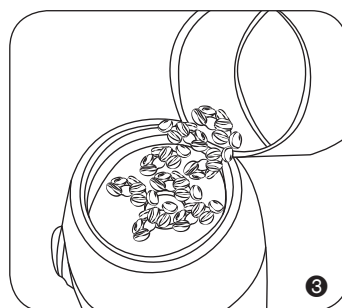
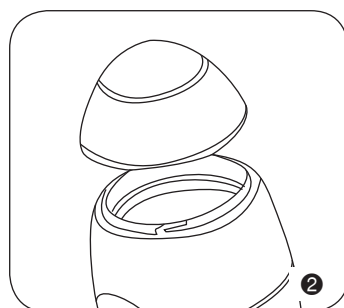
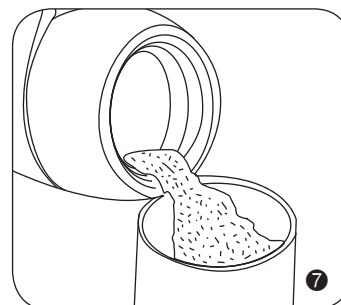
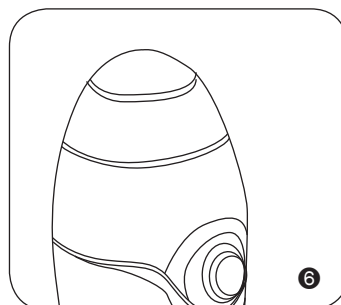
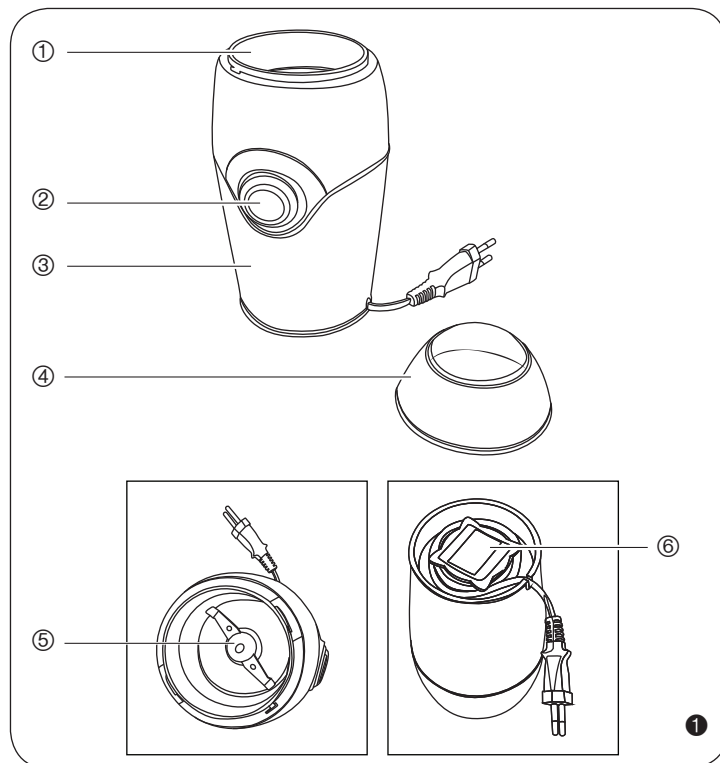
Kenwood Ltd

New Lane
Havant
Hampshire
PO9 2NH

kenwoodworld.com

© Kenwood Ltd 2018





English

Please refer to the first page, where you will find illustrations

intended use

You can use the appliance to grind toasted coffee beans. Do not insert other food but coffee. Any other use of the appliance is not intended by the Manufacturer which disclaims all liability for damages of any kind caused by improper use of the appliance itself. Improper use also results in any form of warranty being forfeited.

Safety warnings

Read these instructions carefully.

- This appliance is intended to be used in household and similar applications such as:
 - staff kitchen areas in shops, offices and other working environments
 - farm houses
 - by clients in hotels, motels and other residential type environments
 - bed and breakfast type environments.
- Keep the original packaging. Free service is not provided for failures caused by unsuitable packaging of the product for shipment to an authorized service center.
- The use of accessories not recommended or not supplied by the appliance manufacturer may cause risk of fire, electrical shock or damage to persons.
- This appliance can be used by persons who have reduced physical sensory or mental capabilities, or lack of experience and knowledge, only if they are monitored by a responsible person or if they have received and understood the instructions and dangers which may arise during the appliance use.
- This appliance must not be used by children. Keep the appliance and its cord out of the reach of children.

- Children shall not play with the appliance or its components.
- Do not leave the packaging near children because it is potentially dangerous.
- To dispose of the appliance, cut the power cord. Render harmless the appliance parts which may constitute a danger to children.
- The use of extensions not approved by the manufacturer can result in damage to property and personal injury.
- If the power cord is damaged, it must be replaced by the manufacturer or by its Technical Assistance Service or by a similarly qualified person in order to avoid any hazard.
- Never put live parts into contact with water: It can cause a short circuit!
- Never immerse the appliance in water or other liquids.
- Never touch the appliance, the plug and the power cable with wet hands
- Unplug the appliance before putting in or taking out the single parts or before cleaning it, even when it is not in operation.
- The product must not be powered by external timers or with separate remote control systems
- Always connect the appliance to an earthed socket.
- Switch on the device only when it is in vertical position.
- The appliance must be used and left at rest on a stable surface.
- The blades are sharp. Be careful, switch off and disconnect from supply the appliance when handling the blades, emptying the

bowl and during cleaning.

- Never use the appliance if the blades are damaged.
- Never touch the moving parts.
- Do not operate the appliance when it is empty.
- Do not insert your hands when the appliance is connected with the electric grid.
- Before removing the lid wait until the blade has completely stopped and always disconnect the power plug from the outlet.
- Always unwind the power cord before use.
- Do not pull the power cord to unplug the appliance.
- Do not place the appliance on or near heat sources.
- Do not leave the appliance exposed to weathering (rain, sun, etc.).
- The appliance complies with the Regulations (EC) No 1935/2004 of 27/10/2004 on the materials in contact with food.

Save these instructions for future reference

With regard to this manual

The appliances are manufactured in accordance with the specific European standards in force and are protected in all their potentially dangerous parts. Read these warnings carefully and use the appliance only for the use for which it was intended in order to prevent injury and damage. Keep this booklet handy for future reference. If you should decide to give this appliance to other people, remember to also include these instructions.

Identification data

The plate located under the appliance support base shows the following identification data:

- manufacturer and CE marking
 - Model (Mod.)
 - serial number (SN)
 - electrical supply voltage (V) and frequency (Hz)
 - electrical power consumption (W)
 - assistance toll-free phone number
- When ordering at Authorized Service Centers, indicate the model and serial number.

Description of the appliance

- ① Container
- ② Start button
- ③ Motor body
- ④ Lid
- ⑤ Blade support
- ⑥ Cable reel base

Important

- The appliance is equipped with a device that blocks the functioning if the lid is not correctly inserted in the motor body.

Instructions for use

Operation

- 1 To open the container turn the lid counter-clockwise ②.
- 2 Insert the coffee in the container ②. The container has a capacity of 35

gr. The coffee beans should not go beyond the container edge.

- 3 To close the container turn the lid clockwise ④. The mark on the container must be aligned with the mark on the lid.
- 4 Completely unwind the power cord from the winding base.
- 5 Insert the plug into a power outlet.
- 6 The appliance works by pulse. To grind the coffee hold the start button ⑤.
- 7 When the coffee is grinded open the lid and empty the container.
- 8 To open the container turn the lid counter-clockwise ⑥.
- 9 Empty the container ⑦.
- **Wait at least a minute before starting a new coffee milling.**
- 10 After using, roll up the power cord on the cable reel base.

Appliance cleaning

Regular cleaning maintains the appliance efficient for a longer time.

- **All cleaning operations described below must be carried out with the appliance switched off and with the plug disconnected from the socket.**
- **Never immerse the appliance in water or other liquids**
- **Check the state of the power cable of your appliance on a regular basis before using it, and if it is damaged, take it to the service centre closest to you to have it replaced only by specialised personnel.**
- **Never use solvents which may damage the plastic parts. Don't use potentially abrasive products.**

To clean the motor body ③, the lid ④ and the container ①, use a damp towel.

- **The blades are sharp. Be careful, switch off and**

disconnect from supply the appliance when handling the blades, emptying the bowl and during cleaning.



Service and customer care

- If you experience any problems with the operation of your appliance, before requesting assistance visit www.kenwoodworld.com.
- Please note that your product is covered by a warranty, which complies with all legal provisions concerning any existing warranty and consumer rights in the country where the product was purchased.
- If your Kenwood product malfunctions or you find any defects, please send it or bring it to an authorised KENWOOD Service Centre. To find up-to-date details of your nearest authorised KENWOOD Service centre, visit www.kenwoodworld.com or the website specific to your Country.
- Made in China.

IMPORTANT INFORMATION FOR CORRECT DISPOSAL OF THE PRODUCT IN ACCORDANCE WITH THE EUROPEAN DIRECTIVE ON WASTE ELECTRICAL AND ELECTRONIC EQUIPMENT (WEEE)

At the end of its working life, the product shall not be disposed of as urban waste.

It shall be taken to a special local authority differentiated waste collection centre or to a dealer providing this service.

Disposing of a household appliance separately avoids possible negative consequences for the environment and health deriving from inappropriate disposal and enables the constituent materials to be recovered to obtain significant savings in energy and resources. As a reminder of the need to dispose of household appliances separately, the product is marked with a crossed-out wheeled dustbin.