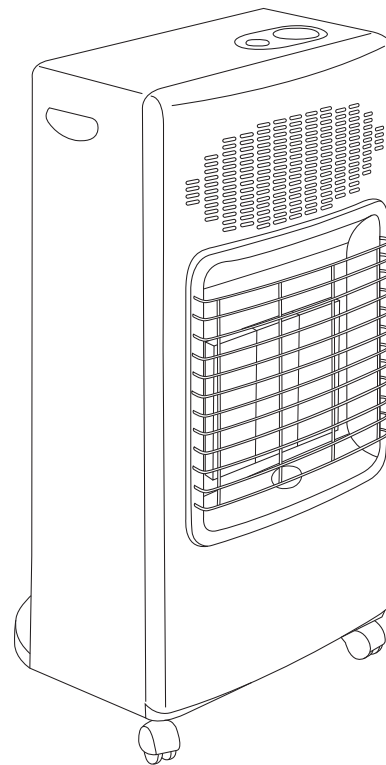


## Type GHM.10

GAS HEATER - Instructions manual

Cod. 3065104800 - Rev. 0 - 23/03/2022



### Kenwood Ltd

New Lane  
Havant  
Hampshire  
PO9 2NH  
[kenwoodworld.com](http://kenwoodworld.com)



### WARNINGS

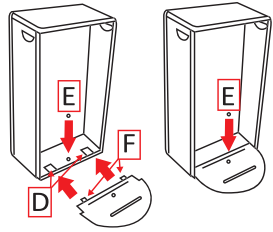


Fig. 1

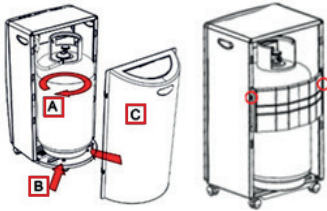


Fig. 2

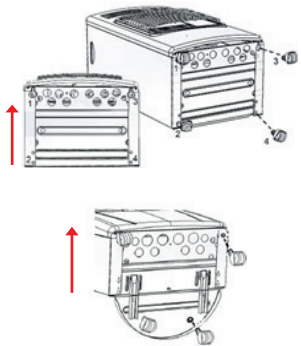


Fig. 3

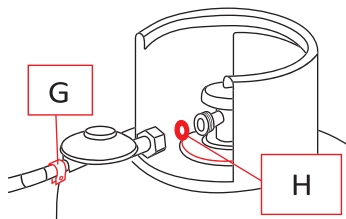


Fig. 4

- The stove must always be used according to the instructions. Please read them carefully and keep them in a safe place.
- For the first usage please place the gas heater outside and turn it on for at least 15 minutes (smell may arise following the first ignition)
- This appliance requires a rubber tube and a pressure regulator complying with current regulations; if they are not supplied as standard, contact your local gas supplier or your authorized dealer.
- Use the appliance only in sufficiently ventilated rooms.
- The current legislation expects, in the rooms where the gas appliances are installed, two openings, one at the top and one at the bottom with a section equal to 2500 mm<sup>2</sup> per kW of power.
- This appliance must not be used in basements, bathrooms, bedrooms and rooms with a volume of less than 15 m<sup>3</sup> (30 m<sup>3</sup> for living room).
- This appliance emits the combustion products in the environment in which it is used
- The protection grid is expected to prevent the risk of fire and burns and none of the parts should be permanently disassembled.
- THE GRID DOES NOT PROTECT THE SAFETY OF CHILDREN AND INVALID PEOPLE.
- DO NOT place clothes or other materials on the stove, as, in addition to the danger of fire, their presence may damage the operation of the appliance.

- DO NOT MOVE the stove from room to another room when it is turned on.
- DO NOT position heater alongside a wall or near tent or chairs etc ...
- ALWAYS face heater towards centre of room.
- Special precautions must be taken if the stove is in rooms where it can easily be moved or hit by children or dogs, etc.
- The following minimum distances from the neighbouring walls must be respected: 20 cm from the sides, 150 cm from the front.
- DO NOT USE in recreational vehicles such as caravans and campers.
- For installation, follow the instructions in the UNI CIG 7129 and UNI CIG 7131 standards paragraphs 3.1 - 3.2 - 5.4 - 6.1 - 6.2 - 6.3.
- The stove you have purchased is equipped with safety devices that intervene in case of malfunctions during the use of the product. In case of accidental extinguishing of the pilot flame (placed in front of the burner) or if the room is not sufficiently ventilated, the safety device blocks the gas flow by switching off the stove.
- DO NOT THROW AWAY THESE INSTRUCTIONS.

## ASSEMBLY INSTRUCTIONS

### Mounting of the bottom

- Remove the plastic button (E).
- Insert the two strips (F) of the base into the rear holes (D) of the base.
- Plug in the plastic button in to the hole (E) to lock

### Back cover mounting

- A - Turn the gas bottle so that the opening remains external for easier entry of the tap.

B - Be sure that the gas bottle is positioned internally to the wheel-nuts

C

- Position the back cover by putting the 4 hooks into the holes on the body

Place the gas heater horizontally with the heating panel up, mount the 4 wheels in the right holes.

### **Gas Leaks are recognizable by the smell**

If you suspect that there is a gas leak, close the cylinder valve. Open the window and ventilate the room.

DO NOT disconnect the pressure regulator. Turn off all the lights and the flames. Turn on the gas slowly and spray the connections with soapy water or liquid detergent. A gas leak will form bubbles. If there is a leak, close the gas and inform your local gas dealer.

DO NOT use the heater again until it has been inspected thoroughly by an authorized expert!

NEVER USE matches or other flames to locate the lost!

## GENERAL SAFETY INSTRUCTIONS

### Cylinder

The heater is suitable for a cylinder of 15 kg maximum capacity.

The replacement of the gas bottle must not be carried out in presence of flames. Use the cylinder only and exclusively in a vertical position. If a screw regulator is used, make sure that there is a seal and that it is in good condition, if in doubt replace it. Then place the cylinder in the cylinder compartment holder and hang up the back cover. DO NOT OVERTURN THE CYLINDER TO MAKE FULL USE OF ITS CONTENT.

### Pressure regulators, pipes and hose clamps

CHECK that the rubber tube is fully inserted on the hose connector and is firmly locked by the clamps, in accordance with UNI-CIG 7140 norms and as showed [G].

Check expiry date and conditions of the hose regularly.

If damaged or expired, replace it with one complying with the current 400 mm length regulations.

Always check the presence of the SEAL GASKET particular [H], fixed on the pressure regulator connection.

When proceeding to connection, according to UNI-CIG 7131, of B type fixed pressure regulator 30mbar, compliant to UNI-CIG 7141, to the cylinder, avoid bending and make bottlenecks on the rubber tube.

### Ventilation of rooms

USE ONLY IN WELL-VENTILATED ROOMS, in rooms where the stove is used, adequate ventilation must be provided. This ensures the removal of the exhaust combustion products and guarantees the exchange of air.

## OPERATING INSTRUCTIONS

- 1) Open the gas cylinder valve.
- 2) STARTING FROM POSITION "●🔥" press the adjustment knob for about 10 seconds, and then continuing to press it, crush one or more times the piezo igniter until the ignition of the pilot flame and the central plate.
- 3) When the pilot flame has been switched on continue to hold the knob pressed for 20 seconds, to allow the thermocouple to heat,
- 4) Then push and rotate the knob to select the desired power level according to the following instruction:  
(Small flame) minimum flow,  
(medium flame) average flow, (large flame) maximum power.
- 5) Keep on the knob pressed for 20 seconds; release the knob if the pilot flame remains lit, the heater is regular working, if the pilot flame goes out repeat the ignition procedure.
- 6) To turn off the heater you must close the cylinder valve.

All our heaters are equipped with a safety device (ODS) that operates automatically turning it off if the percentage of CO<sub>2</sub> (Carbon dioxide) exceeds the legal limit.



### CAUTION

**Stuck "in the low position" the control knob, cancels the intervention of the safety devices; Be careful to always keep the control knob from returning to "high" position of rest.**

# Type GHM.10

## Infrared Model

### technical features

Gas	Category Gas	Minimum Power (consumption)	Medium Power (consumption)	Maximum Power (consumption)	Usage Pressure
G30/ G31	I3+	1.6Kw 100g/h	2.8Kw 200g/h	4.2Kw 300g/h	28-30/37 mbar

This Appliance is designed to operate on LPG at a nominal pressure of 30 mbar. For a regular combustion of the gas an amount of air equal to 8.4 m<sup>3</sup> /h is required.

**This product is not suitable for primary heating functions**

### COMMISSION REGULATION (EU) 2015/1188 (28 April 2015)

Model identifier Type GHM.10							
Indirect heating function: (yes / no) NO							
Direct thermal power [kW] 4.2							
Indirect thermal power [kW] 0							
Fuel					Emissions due to environment heating		
					NO <sub>x</sub> <sup>(1)</sup>		
Select the type of fuel				[gaseous / liquid]	[to specify]	[mg / kWh <sub>input</sub> ] (GCV)	
G30				gaseous		NA <sup>(2)</sup>	
Data	Symbol	Value	Unit	Data	Symbol	Value	Unit
Thermal power				Useful efficiency (NCV)			
Nominal thermal power	$P_{nom}$	4.2	kW	Useful efficiency at nominal heat output	$\eta_{th, nom}$	NA <sup>(2)</sup>	%
Minimum heat output (indicative)	$P_{min}$	1,6	kW	Useful efficiency at minimum heat output (indicative)	$\eta_{th, min}$	NA <sup>(2)</sup>	%
Type of thermal power / control of the ambient temperature							
Two or more manual steps without control of room temperature						YES	
Power required for the pilot flame					$P_{pilot}$	0.160	kW
(1) NO <sub>x</sub> = nitrogen oxides (2) NA = Not Applicable (no reference standard applicable to the product, which provides for measurement of this parameter)							
Contacts		<b>Kenwood Ltd</b> , New Lane, Havant, Hampshire, PO9 2NH kenwoodworld.com					

# MAINTENANCE

- Sprinkle with a soft wet cloth only when switched off, cold and unplugged.
- Do not use solvents or abrasive detergents.
- Check that the dust does not obstruct the air openings inlet or outlet.
- To clean use a vacuum cleaner.
- Cover and store the appliance in a dry and dust-free place.
- For any technical and / or maintenance problems please contact authorized dealer.
- Every five years should be made a maintenance check at authorized service centre



## information on disposal and recycling

At the end of the life of the gas stove, it must be respected the environment complying with local regulations regarding the disposal of waste and, where possible, to implement the separate collection of product's materials following the instructions below.

## do not dispose this product as unsorted urban waste

### **THIS PRODUCT MUST BE DISPOSED AT THE NEAREST WASTE SORTING CENTER.**

#### **Infrared model composition:**

Mixed Metal components	91.4% (ca 12.4 kg)
Plastic materials	6.7% (ca 0.92 kg)
Ceramic Components	1.9% (ca 0.26 kg)

### **Disassembly and separation instructions for disposal of different materials:**

- 1 Remove the rubber hose by unscrewing the metal clamps
- 2 Remove the round control knob with the aid of a plier,
- 3 Unscrew the locking nut of the valve
- 4 Detach the command group in plastic material levering from below.
- 5 Unmount the four wheels of plastic material with the aid of big screwdriver pulling down
- 6 Pull of the protective grid
- 7 Breaking and detach from the burner ceramic plates with the aid of a hammer and chisel.

### **ERC (European Waste Catalog)**

- 17 04 07 mixed metals
- 17 02 03 plastic
- 17 01 03 tiles and ceramics

These materials can be handled according to local instructions regarding waste disposal

## service and customer care

- If the cord is damaged it must, for safety reasons, be replaced by KENWOOD or an authorized KENWOOD repairer.
- If you experience any problems with the operation of your appliance, before requesting assistance refer to the "troubleshooting guide" section in the manual or visit [www.kenwoodworld.com](http://www.kenwoodworld.com).
- Please note that your product is covered by a warranty, which complies with all legal provisions concerning any existing warranty and consumer rights in the country where the product was purchased.
- If your Kenwood product malfunctions or you find any defects, please send it or bring it to an authorised KENWOOD Service Centre. To find up to date details of your nearest authorized KENWOOD Service centre visit [www.kenwoodworld.com](http://www.kenwoodworld.com) or the website specific to your Country.
- Made in Italy.



**IMPORTANT INFORMATION FOR  
CORRECT DISPOSAL OF THE  
PRODUCT IN ACCORDANCE  
WITH THE EUROPEAN  
DIRECTIVE ON WASTE  
ELECTRICAL AND ELECTRONIC  
EQUIPMENT (WEEE)**

At the end of its working life, the product must not be disposed of as urban waste. It must be taken to a special local authority differentiated waste collection centre or to a dealer providing this service. Disposing of a household appliance separately avoids possible negative consequences for the environment and health deriving from inappropriate disposal and enables the constituent materials to be recovered to obtain significant savings in energy and resources. As a reminder of the need to dispose of household appliances separately, the product is marked with a crossed-out wheeled dustbin.