

IMPORTANT SAFEGUARDS

- 1) Read the instructions carefully
- 2) The appliance contains pressurised steam. Incorrect or improper use could be dangerous. The appliance is designed for household use only as described in the manual. The manufacturer declines all liability for damage deriving from improper use of the product.
- 3) Do not leave the appliance unsupervised when plugged into the mains.
- 4) After use and before cleaning the appliance or carrying out maintenance, always unplug from the mains.
- 5) Before use, make sure the mains voltage corresponds to the voltage indicated on the rating plate on the bottom of the appliance.
- 6) Plug the appliance into an efficiently earthed socket with a minimum rating of 10 A.
- 7) Never direct the steam jet towards power sockets or appliances containing electrical components such as those inside ovens. They could be damaged.
- 8) Never direct the steam jet towards the appliance.
- 9) Never unplug the appliance by pulling the power cable or appliance itself. Do not touch the plug with wet hands.
- 10) Do not run the appliance over the power cable. Avoid closing the door on the cable or rubbing it over sharp edges. Keep it away from hot surfaces.
Never place the appliance in a vertical position. Always keep the appliance in a horizontal position when in use.
- 11) **When filling the tank, never place the appliance under the tap to add water.**
- 12) Avoid the steam coming into contact with the skin. The high temperature could cause serious burns. Never direct the steam jet towards persons or animals or towards surfaces or objects with could be damaged by high temperatures.
- 13) To move the appliance, hold it by the handgrip. As it contains a steam generator, surfaces become hot during use. Persons affected by particular pathologies causing abnormal sensitivity to heat should take special care when using this appliance.
- 14) Do not add detergent to the tank. Use water only.
- 15) Never wash the appliance with triethylene or other solvents. Clean with a damp cloth and normal washing up liquid only. **NEVER immerse the appliance in water.**
- 16) Take the utmost care when using the appliance to clean stairs.
- 17) The appliance is not intended for use by persons (including children) with reduced physical, sensory or mental capabilities, or lack of experience and knowledge, unless they have been given supervision or instruction concerning use of the appliance by a person responsible for their safety. Children should be supervised to ensure that they do not play with the appliance.
- 18) Keep the appliance out of reach of children or persons not capable of using it without supervision.
- 19) Do not use the appliance if it appears to be faulty. Contact your local dealer or an authorised service centre.
- 20) Protect the appliance from atmospheric agents (rain, frost, sun, etc).
- 21) For all repairs contact your dealer or an authorised service centre to maintain the efficiency of your appliance and the validity of the guarantee. For the same reasons, you are always recommended to use original spare parts.
- 22) Each appliance is tested to make sure it works perfectly. Drops of water may therefore be seen through the water level viewing window (H).
- 23) If the power cable is damaged, it must be replaced by the manufacturer, an authorised service centre or a qualified electrician in order to eliminate all risk.

KEEP THESE INSTRUCTIONS CAREFULLY

DESCRIPTION

- A** Flexible hose with handgrip and steam regulation
- B** "Steam ready" light
- C** "No water" light
- D** ON/OFF switch and light
- E** Tank cap
- F** Cable tidies
- G** Tool holder
- H** Water level indicator

Accessories

- I** Extension tubes
- L** Crevice tool
- M** In-line brush for crevice tool
- N** Round brushes for crevice tool

- O** Carpet/floor brush
- P** Cleaning cloth
- Q** Squeegee/Wall cleaner
- R** Frame for wall cleaner
- S** Cloth floor wall cleaner

Garment care

- T** Clothes hook
- U** Clothes hook base
- V** Garment care
- W** Clothes freshening brush
- X** Garment care's extension
- Y** Triangular brush

DO NOT USE THE GARMENT CARE AS STEAM CLEANER OR FLOOR CLEANER

PREPARATIONS FOR USE

Filling the tank

Before performing maintenance or cleaning the appliance, make sure it is unplugged from the mains.

- To open the tank, remove the cap (fig. 1).
- Pour the water into the tank, taking care not to exceed the top notch on the water level indicator (H) (fig. 2).
- Close the cap.

Fitting the hose to the appliance and preparing the cleaning tools

To fit the hose to the appliance, insert the plug into the socket until it hooks into place (fig. 3). To remove, press the button and pull out (fig. 4). The tools provided have the same attachment system and can be used on either the extension tubes or the handgrip.

USING FOR THE FIRST TIME

- The first time you use the appliance and **whenever you turn it on**, drops of water will be given off with the first steam discharges. This is caused by the low temperature of the hose which leads to the **formation of condensate**. As you use the appliance, the hose warms up and steam discharge is optimised. ***This phenomenon is normal and is not a defect.***
- When used for the first time, **the appliance may give out smoke and an odour for several minutes**. This is caused by heating and subsequent drying of the sealers used in assembling the steam generator. **You are recommended to ventilate the room.**

USING THE APPLIANCE

- Plug the appliance into the mains.
- Press the ON/OFF switch (D). The light on the switch comes on.
- When the "steam ready" light (B) goes off, the appliance is ready to use. To use the steam press the button on the handgrip (fig. 5). To stop steam delivery just release the button.

STEAM REGULATION

The steam regulator is located on the hose at the bottom of the handgrip (fig. 6). This can be used to reduce or increase the quantity of steam according to the type of surface to be cleaned (eg. hard floors, tile joints - maximum steam; sofas, upholstery - minimum steam).

When you turn the appliance on, you are recommended to turn the steam regulator to maximum.

TOPPING UP THE WATER IN THE TANK

When the "no water" light (C) comes on (fig. 7), the tank must be filled. Proceed as follows:

- Turn the appliance off using the ON/OFF switch (D) and unplug from the mains socket.
- Remove the cap and fill the tank with **cold** water. Replace the cap.

IMPORTANT: during operation, the appliance fills the steam generator with water from the tank (continuous fill). It is normal to hear the noise caused by filling at regular intervals to maintain constant steam pressure.

If the water in the tank **runs out completely**, there is still enough steam left for about 10 minutes operation, depending on the quantity

being used. If you do not fill the tank, the pump vibrates and no more steam is given off.

When the water in the tank has been topped up, the appliance operates as if it were turned on for the first time. Before cleaning, you must therefore wait for the steam to be ready. This takes about three minutes, during which time the water is pumped into the steam generator.

When the water in the tank has run out, you should not continue steam cleaning, leaving the pump vibrating. If continued over time, this practice could irreparably damage internal components.

IMPORTANT: there may be water on the surface under the appliance. This is caused by the pressure relief valve. To avoid water spilling out of the tank when moving the appliance, always close the tank with the cap.

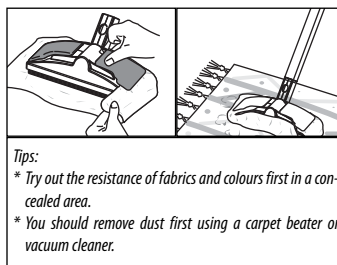
AFTER USE

After use, put the appliance away tidily by unplugging, wrapping the power cable around the cable ties and putting the tools away on the tool holder (fig. 8).

CLEANING TIPS

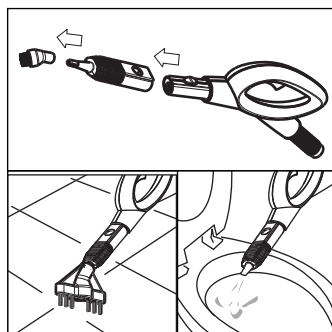
Rugs and carpet

Tools: carpet/floor brush + cloth attached to the spring clips.



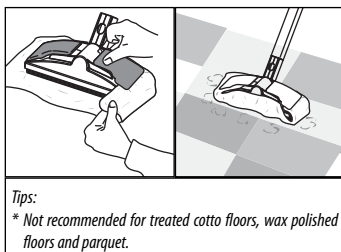
Joints between tiles, radiators, shutters, door jambs, inaccessible points, vases, bicycles, mountain bikes, car engines, motorbikes, garden equipment (mower), children's toys (swing)

Tools: crevice tool + brushes (round or in-line).



Hard floors

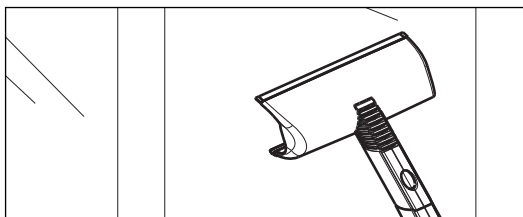
Tools: carpet/floor brush + cloth attached to the spring clips.



Mirrors, windows, car windows, verandas and greenhouses

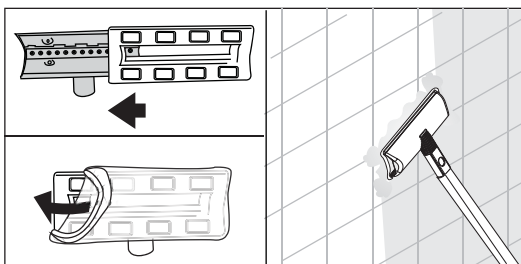
Tools: squeegee directly on the hose or extension tubes.

Important: in low temperatures, you are recommended to warm the windows first with a weak jet of steam to avoid the risk of breakage due to sudden temperature changes.



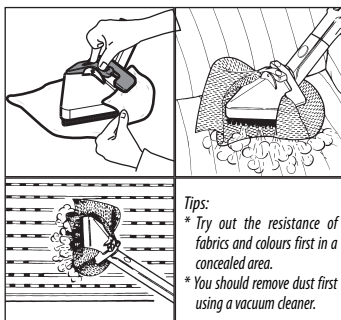
Walls, vertical surfaces

Tools: Wall cleaner+ frame + cloth.



Armchairs, sofas, cushions, mattresses, car, interiors, blinds, vertical walls, garden furniture, gazebos, garden umbrellas and rocking chairs.

Tools: triangular brush + cloth attached to the spring clips.



CLOTHES AND FABRIC FRESHENING SET

Tools: Garment care: Accessory for ironing and revitalization of clothes and fabrics.

Fitting the garment care to the appliance

To fit the garment care to the appliance, insert the plug into the socket until it hooks into place (fig. 3). To remove, press the button and pull out (fig. 4).

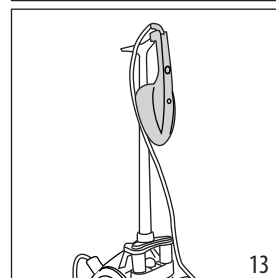
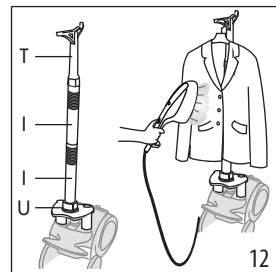
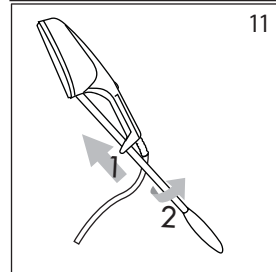
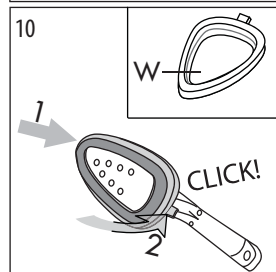
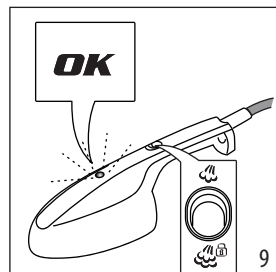
Using the garment care

- Plug the appliance into the mains.
- Press the ON/OFF switch (D). The light on the switch, the "steam ready light" (B) and the OK light on the garment care (fig. 9) come on.
- When "OK" and "steam ready light" go off, the appliance is ready to use.
- Hook the relative brush to the garment care (fig. 10).
- Press and move forward the button to release steam. If you want continuous steam, press and move the button to the position. The button has a safety device that avoid accidental emissions of steam: that's the reason why it is always necessary to press the button before move it to the steam position. It is recommended to unlock the steam button before switching off the appliance.
- If you have to refresh curtains, fit the extension tube and press the button to position (fig. 11).
- The appliance is fitted with a accessory ideal for refreshing clothes (fig. 12).
- You can rest the garment care on the clothes hook (fig. 13) on a stable surface.

IMPORTANT:

The appliance must not be left unattended while it is connected to the mains.

Do not use the garment care if it has been dropped and there are visi-



ble signs of damage or leaks. When resting the accessory in its hook, ensure that the surface on which the appliance is rested is stable.



NEVER IMMERSE THE APPLIANCE: IT IS AN ELECTRICAL PRODUCT! Use a dry soft cloth to clean the appliance.
DANGER OF SCALDINGS!



Always keep attention not to touch the area where steam is released as it could be hot.

DISPOSAL



In compliance with European Directive 2002/96/EC, the appliance must not be disposed of as household waste, but must be taken to an official differentiated waste collection centre.