

Register Now 
www.delonghi.com/register



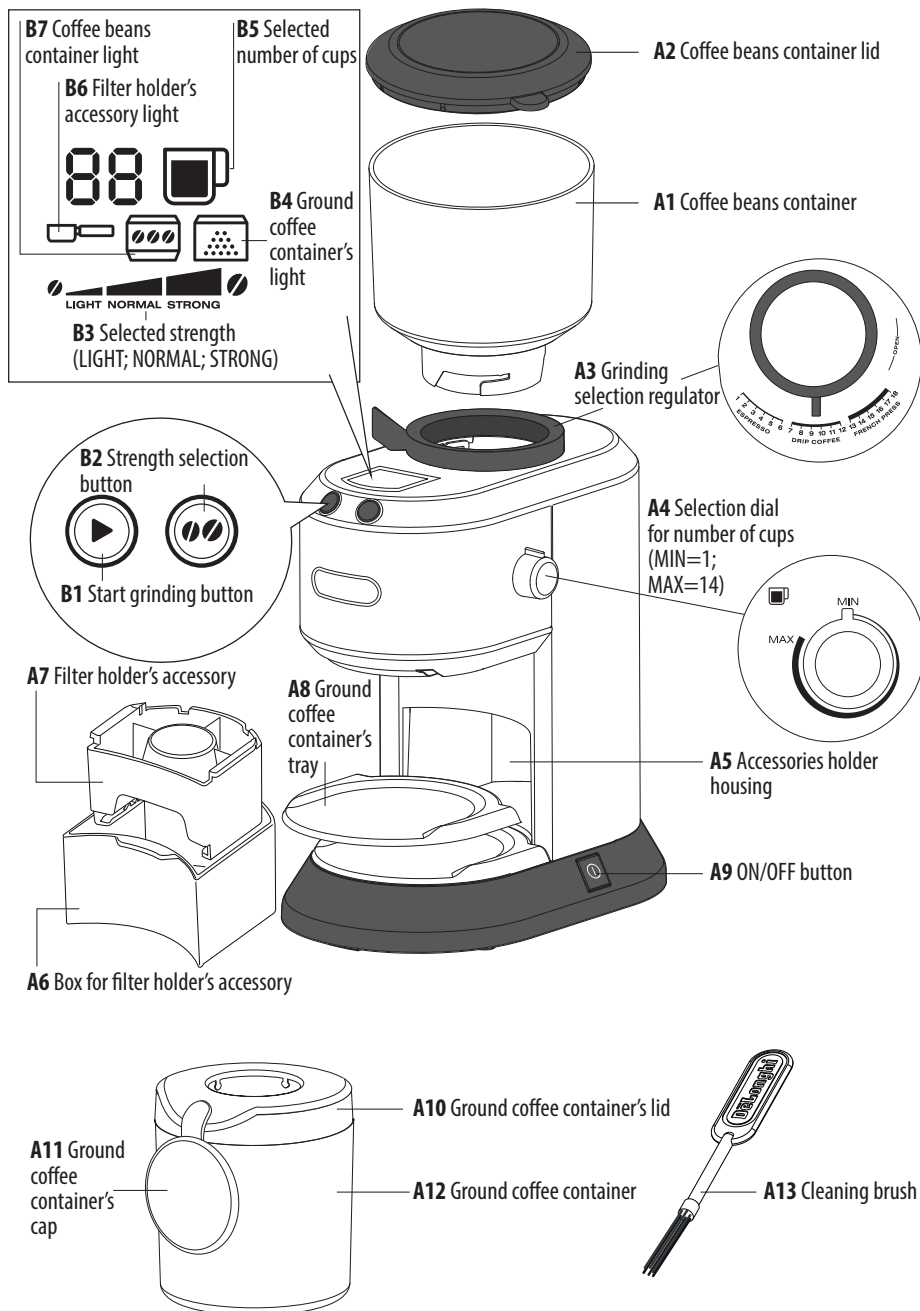
5717710231_00_1019

KG521

MACINACAFFÈ
Instructions for use



De'Longhi



1. FUNDAMENTAL SAFETY WARNINGS

- Appliances can be used by persons with reduced physical, sensory or mental capabilities or lack of experience and knowledge if they have been given supervision or instruction concerning use of the appliance in a safe way and if they understand the hazards involved.
- Children should be supervised to ensure that they do not play with the appliance.
- Never clean by immersing the appliance in water.
- Do not use the appliance if the cover protecting the rotating part is damaged or ruined.
- This is an household appliance only. It is not intended to be used in: staff kitchen areas in shops, offices and other working environments; farm houses; by clients in hotels, motels and other residential type environments; bed and breakfast type environments.
- If the plug or cord is damaged, it must be replaced by Customer Services only to avoid all risk.

FOR EUROPEAN MARKETS ONLY:

- Always unplug the appliance when left unattended and before assembly, taking apart or cleaning.
- This appliance shall not be used by children. Keep the appliance and its cord out of reach of children.
- Children shall not play with the appliance.

2. SAFETY WARNINGS



Danger! Failure to observe the warning may result in life threatening injury by electric shock.

This is an electrical appliance and may cause electric shock.

You should therefore follow these safety warnings:

- Never touch the appliance with damp hands or feet.
- Never touch the plug with damp hands.
- Make sure the socket used is freely accessible at all times, enabling the appliance to be unplugged when necessary.
- Unplug directly from the plug only. Never pull the cord as you could damage it.
- To disconnect the appliance completely you must unplug it from the mains socket.
- If the appliance is faulty, do not attempt to repair. Turn it off, unplug from the mains socket and contact Customer Services.
- Before cleaning the appliance, turn it off and unplug from the mains socket.



Important: Failure to observe the warning could result in injury or damage to the appliance.

- Keep all packaging (plastic bags, polystyrene foam) away from children.
- Do not locate the appliance above or near electric or gas hobs or a hot oven.
- Make sure there are no foreign objects in the coffee grinder.
- Avoid contact with moving parts.

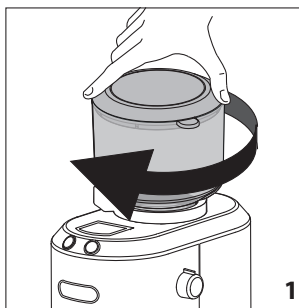
Designated use

This appliance must be used exclusively for the purpose for which it was expressly conceived. All other uses are considered improper. This appliance is not suitable for commercial use. The manufacturer is not liable for damage deriving from improper use of the appliance.

Never try to chop ice or use the appliance other than as indicated in the Instruction for Use.

2.1 Instruction for Use

Read this Instruction for Use carefully before using the appliance. Failure to follow this Instruction for Use may result in injury or damage to the appliance.



The manufacturer is not liable for damage deriving from failure to respect this Instruction for Use.

i Please note:

Keep this operating instructions for future use. If the appliance is passed to other persons, they must also be provided with this Instruction for Use.

3. CHECKING THE APPLIANCE

After removing the packaging, make sure the product is complete and undamaged and that all accessories are present. Do not use the appliance if it is visibly damaged. Contact De'Longhi Customer Services.

4. CONNECTING THE APPLIANCE

⚡ Danger!

Check that the mains power supply voltage corresponds to the value indicated on the rating plate on the bottom of the appliance.

Connect the appliance to an efficiently earthed and correctly installed socket with a minimum current rating of 10A only. If the power socket does not match the plug on the appliance, have the socket replaced with a suitable type by a qualified professional.

5. BEFORE USE

Before using the coffee grinder, clean the outer housing and the container for loading coffee beans with a clean damp cloth. Wash all the accessories in hot soapy water, then rinse and dry.

⚠ Important:

The grinder should not be washed and must always be kept dry. Clean the grinder with a stiff bristle brush.

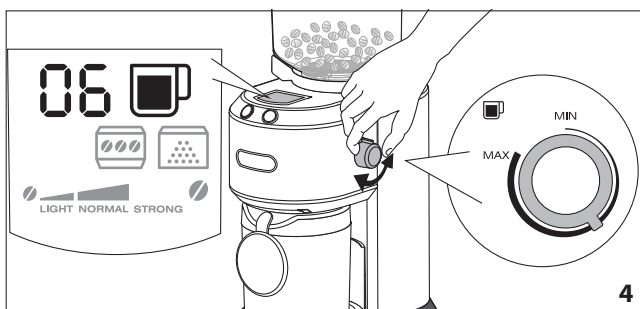
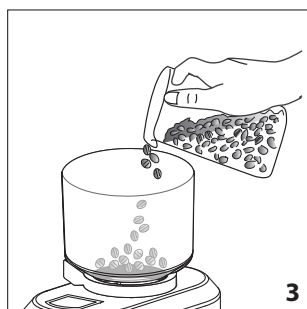
6. USING THE APPLIANCE

6.1 Using the ground coffee container

1. Place the appliance on a flat surface.
2. Screw the coffee beans container turning it clockwise (fig. 1);
3. Remove the coffee beans container lid (fig. 2);
4. Pour the desired coffee beans quantity in the container (fig. 3);
5. Close the lid pushing it firmly;

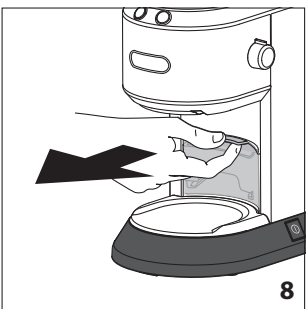
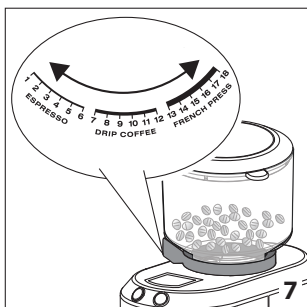
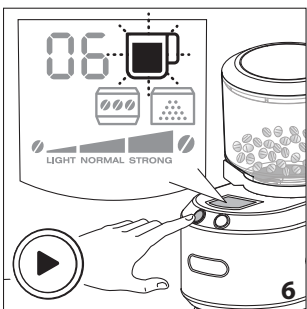
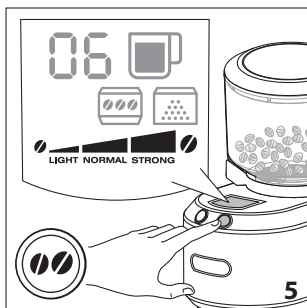
⚠ Important:

Never remove the container if there are coffee beans inside.



6. Plug the appliance into the mains socket;

7. Set the dial (A4) to the quantity of coffee corresponding to the number of cups for which you want to grind the beans: the relative number appears on the display (fig. 4). Use this ratio as a rough guide only, since the



- amount will vary according to the taste, type and roasting of coffee beans as well as the fineness of grinding selected;
- Press the strength selection button (B2) until the desired aroma appears on the display (fig. 5);

! Important:

- The quantity of ground coffee varies upon the different coffee grind.
- Adjust the coffee grind and strength according to the personal taste.
- FRENCH PRESS: when preparing ground coffee for this kind of coffee machine, it is recommended to set max 8 cups.

- Push the start grinding button (B1) (fig. 6);
- Select the grind of coffee by adjusting the regulator (A3) to the type of coffee desired (fig. 7): adjust the regulator when the appliance is working;
- Once the previously selected amount of coffee is reached, the appliance will stop automatically;
- If you want to stop the appliance before grinding is finished, press the start grinding button again;

i Please note:

Stop grinding if the ground coffee reaches the max level.

- Remove the pre-ground coffee container, gently tap the container, remove the lid and pour the pre-ground coffee into the filter of the coffee machine. If you don't use all the ground coffee, it can be stored in the container, closing the cap (A11) to avoid losing aroma.

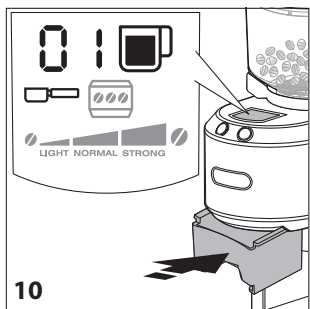
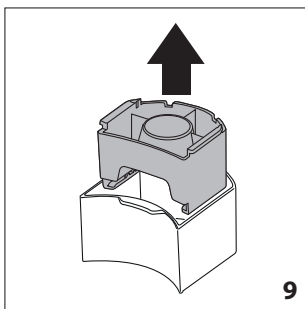
Always empty the ground coffee container before using the appliance again.

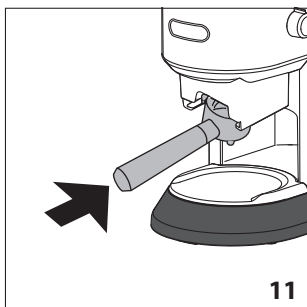
6.2 Grinding directly in the filter holder

- Prepare the coffee beans container as illustrated in steps 1 to 6 of the previous paragraph;
- Extract the filter holder accessory's box (A6) from its housing (fig. 8);
- Extract the filter holder accessory (A7) (fig. 9);
- Insert the accessory to the appliance, pushing it as far as it goes: the corresponding light comes steady on the display (fig. 10);

i Please note:

- When using the filter holder accessory, you can not choose the number of the cups: you can only grind coffee for 1 or 2 cups of espresso;





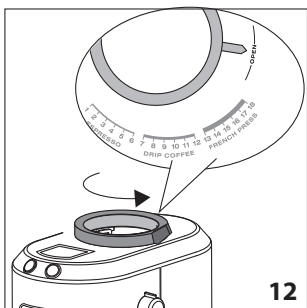
- When using the filter holder accessory, turn the grinding selection regulator (A3) to number 1 or 6 of the "ESPRESSO" section.

Note: do not grind beyond number 6 to avoid to overfill the filter holder.

- Insert the filter holder to the accessory (fig. 11). It is recommended to hold in place the filter holder, as the accessory is suitable for standard dimensions and do not cover all the models;
- Push the start button (B1) (fig. 6): to grind the 2-cups quantity, push two times the start button within 1 second after the grinding starts;
- Grinding automatically stops: if you want to stop it earlier, press the start button once again;
- Extract the filter holder and proceed preparing espresso coffee.

7. TIPS

- Always close the beans coffee container to maintain the taste and aroma of the coffee beans.
- Only grind the coffee quantity for the single preparation.
- Never overfill the coffee beans container. As a rough guide, use a tablespoon of beans per cup (e.g. 4 tablespoons of beans for 4 cups of coffee). As you use the grinder, you will of course discover the optimum quantities for your own personal taste.
- After 2 preparations consequently, wait 15 minutes before next use.
- To ensure good quality in terms of coffee freshness, always clean the appliance after each use. It is not advisable to grind oil beans.



8. PROGRAMMABLE SETTINGS

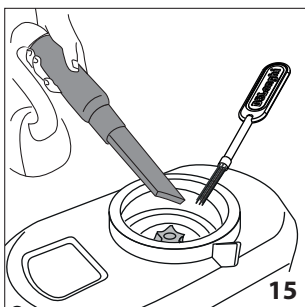
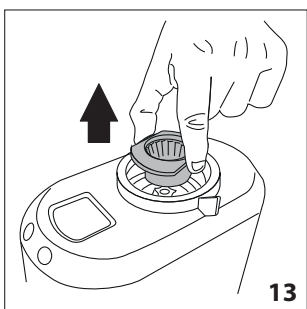
8.1 Programming grinding time with the filter holder accessory (A7)

- Insert the filter holder accessory;
- Insert the filter holder of your coffee machine;
- Push the start grinding button (A1) and keep it pushed: the grinding starts and the cup symbol flashes fast to indicate that the appliance is in programming mode;
- Once reached the coffee quantity, release the button: the appliance stops grinding and the time for 1 espresso cup is programmed.



Please note:

- To avoid excessive quantities, the max programmable grinding time is about 7 seconds.



- It is possible to program the 1-cup quantity: when preparing the quantity for 2 cups, the appliance grinds a double quantity.

8.2 Display contrast

The display can be set on 5 different levels of contrast:

- Switch the appliance on by pressing the ON/OFF button (A9);

2. Extract the ground coffee container (A12) or the filter holder accessory (A7) (if inserted);
3. Press one button: on the display appears the current number of the contrast level (fig. 16);
4. Press the buttons to increase or decrease the contrast;
5. Once selected the desired contrast, insert the ground coffee container of the filter holder accessory: the appliance is ready to use.

8.3 Reset to default values

1. Switch the appliance on by pushing the ON/OFF button (A9);
2. Extract the ground coffee container (A12) or the filter holder accessory (A7) (if inserted);
3. Press both buttons simultaneously: the appliance reset to the default values of display contrast and grinding time when using the filter holder accessory;
4. Insert the ground coffee container or the filter holder accessory: the appliance is ready to use.

9. CLEANING



Danger!

Before performing any cleaning operations, the machine must be turned off and disconnected from the mains power supply. Never immerse the coffee machine in water.

1. Unplug from the mains.
2. Unhook the coffee beans container (A1) rotating it counterclockwise and extract it. Ensure it is empty when removing;
3. Extract the ground coffee container (A12);

4. Extract the filter holder accessory's box (A6);
5. Lift the ground coffee container's tray (A8);
6. Wash all the accessories with soapy mild water: do not wash in dishwasher! Dry thoroughly the accessories before use.



Please note:

Regularly clean the grinders, proceeding as follows:

1. Turn counterclockwise the regulator, to "OPEN" position (fig. 12);
2. Extract by lifting the upper grinder (fig. 13);
3. Clean the extracted grinder with the stiff bristle brush (fig. 14);
4. Clean the inner grinder with a brush and vacuum up the residues of coffee with a vacuum cleaner (fig. 15);
6. Re-insert the upper grinder and turn the regulator by choosing the desired grinding level.

10. TECHNICAL DATA

Voltage: 220-240V ~50/60 Hz max. 10A

Absorbed power: 150W

Weight: 3.5kg



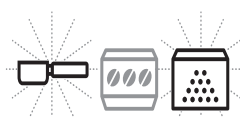

This appliance complies with European regulation no. 1935/2004 on food contact materials.

11. DISPOSING OF THE APPLIANCE



The appliance must not be disposed of with household waste, but taken to an authorised waste separation and recycling centre.

12. TROUBLESHOOTING

The appliance does not work.	Make sure the plug is correctly plugged into the mains socket and is functioning correctly.
	Neither the ground coffee container (A12) nor the filter-holder accessory (A7) is inserted. Insert the required accessory
	The accessory is not inserted correctly. Extract, then insert again.
	The beans container is not inserted (A1). Insert the container.
	The beans container (A1) is not inserted correctly. Extract, then insert again.
The appliance stops during grinding.	The appliance has overheated. The thermal cutout on the motor has tripped. Contact an authorised Customer Services.
There is not enough ground coffee.	Over time the burrs wear down. Replace them with new burrs purchased from an authorised Customer Services centre (see section "9. cleaning")