

Instructions for use

PAC AP Series

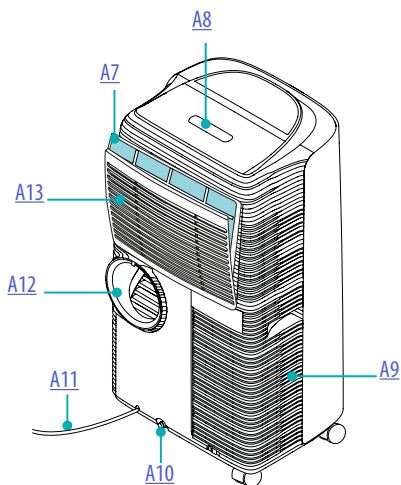
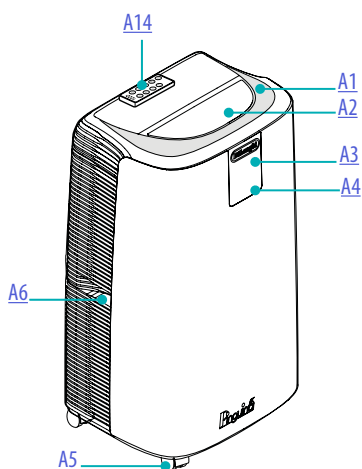
**Pinguino**  
Gentle Jet

**DeLonghi**

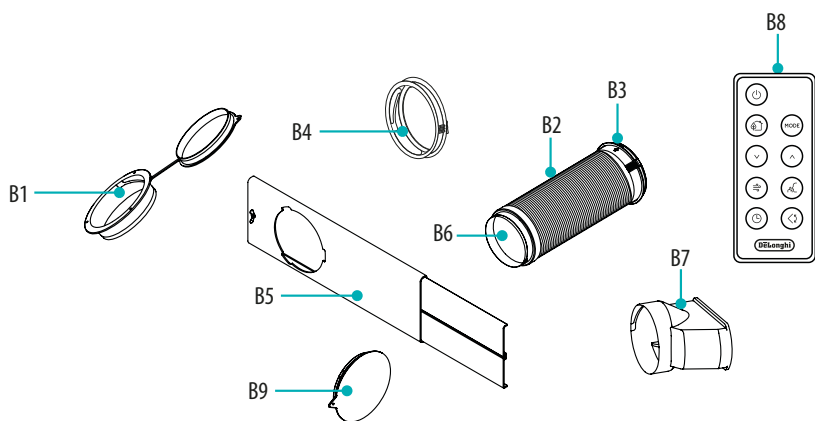
<b>CONTENTS .....</b>	<b>2</b>
<b>DESCRIPTION .....</b>	<b>3</b>
<b>INSTALLATION .....</b>	<b>5</b>
Electrical Connection .....	5
Air conditioning without installation.....	5
Sliding windows .....	6
Air conditioning with installation .....	6
<b>USE .....</b>	<b>7</b>
Operating from the control panel .....	7
Description of the control panel.....	7
Control panel operation.....	8
Mode selection .....	8
Air Conditioning mode .....	8
Dehumidifying mode .....	9
Fan mode .....	9
Select the temperature.....	9
Operating from the remote control.....	10
Using the remote control .....	10
Description of the remote control .....	10
Turning the appliance ON/OFF .....	11
Selecting the operating modes.....	11
Selecting the temperature.....	11
Selecting the air flow .....	11
Setting the timer .....	11
Eco Real Feel function.....	12
Silent function .....	13
Swing function .....	13
<b>SELF-DIAGNOSIS.....</b>	<b>14</b>
<b>SELF-DIAGNOSIS (SOME MODELS ONLY).....</b>	<b>15</b>
<b>TIPS FOR CORRECT USE .....</b>	<b>16</b>
Cleaning .....	16
Cleaning the cabinet .....	16
Cleaning air filter.....	16
Start of season checks .....	17
End of season operations.....	17
Technical specifications .....	17
Limit conditions.....	17
<b>TROUBLESHOOTING .....</b>	<b>18</b>

## AP Description

---



- A1.** Air outlet
- A2.** Air outlet flap
- A3.** Remote control signal receiver
- A4.** Control panel
- A5.** Castors
- A6.** Handles
- A7.** Filter
- A8.** Remote control compartment
- A9.** Air intake grille
- A10.** Drainage hose with cap
- A11.** Power cable
- A12.** Air exhaust hose housing
- A13.** Air intake grille
- A14.** Remote control



- B1.** Wall flange with cap
- B2.** Air exhaust hose
- B3.** Hose adapter
- B4.** Adapter for window bracket
- B5.** Window bracket with wing nut
- B6.** Adapter for wall mounting/window outlet
- B7.** Window outlet
- B8.** Remote control
- B9.** Window bracket cap



### Electrical Connection

Before plugging into the mains, check the following:

- the mains voltage is the same as that indicated on the plate on the back of the appliance;
- the socket and electrical line are sized to support the load required;
- the socket is the proper type for the plug, otherwise, replace the socket;
- the socket is connected to an efficient earthing system.

The manufacturer is not responsible in the event of noncompliance with these injury prevention standards.

**The power cable must only be replaced by specialised technicians.**

**Please note:** The instructions below will enable you to prepare your air conditioner for operation as efficiently as possible. Before use, make sure the air intake and outlet grilles are unobstructed.

**Please note:** This appliance is provided with an auto-evaporation feature for condensate removal during cooling and dehumidifying modes.

### Air conditioning without installation

#### CASEMENT WINDOW

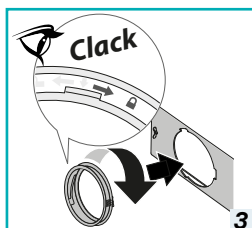
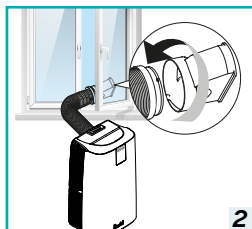
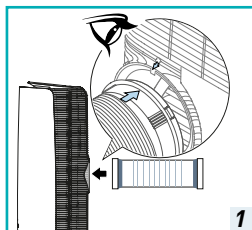
If you have a casement window proceed as follows:

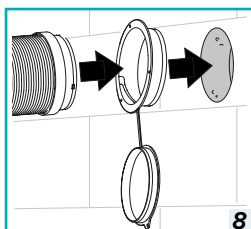
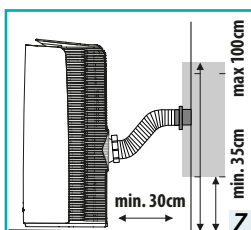
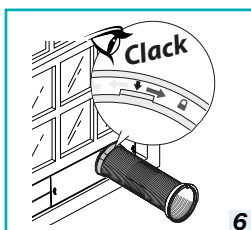
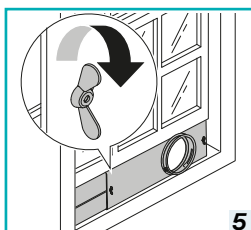
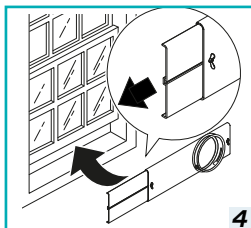
- Fit the air exhaust hose (B2) in the relevant housing located on the rear side of the appliance paying attention to align the two arrows as shown in figure 1, in order to hook it. To remove the exhaust hose rotate it in the clockwise or anticlockwise directions.
- Screw the window outlet (B7) and place outside the window to exhaust the hot air (fig. 2).

#### DOUBLE-HUNG WINDOW

If you have a double-hung window proceed as follows:

- Insert and lock the adapter for window bracket (B4) into the slot of the window bracket (B5) (fig.3)
- Place the window bracket in the window sill, and extend the bracket fully within the window frame (fig. 4).
- Fix the bracket by the wing nut (fig. 5) (Should the window bracket be too large for the window the plastic can be cut with a saw by a qualified professional).
- Insert the air exhaust hose (B2) into the adapter for window bracket (B4) and rotate it as shown in fig. 6.
- In order to facilitate the fitting of the air exhaust hose (B2) in the relevant housing located on the rear side of the appliance, position the hose adapter's tabs (B6) in a vertical axis and proceed as shown in fig.1.



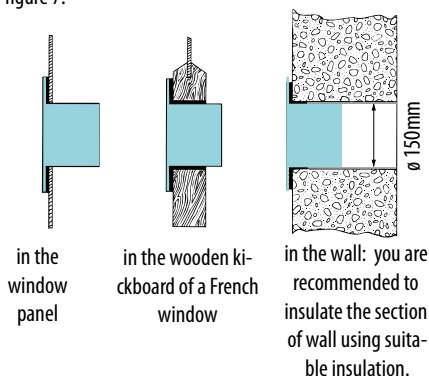


## Sliding windows

Thanks to the locking wing nut, it's possible to use the window bracket also for sliding windows. Position the bracket vertically with the hole in the lower part so to allow a easier installation of the exhaust hose.

## Air conditioning with installation

- Fit the air exhaust hose (B2) in the relevant housing located on the rear side of the appliance (fig. 1).
- Drill a hole 150 mm in an outside wall or through a window panel. Respect the distances, dimensions and height of the hole given in figure 7.

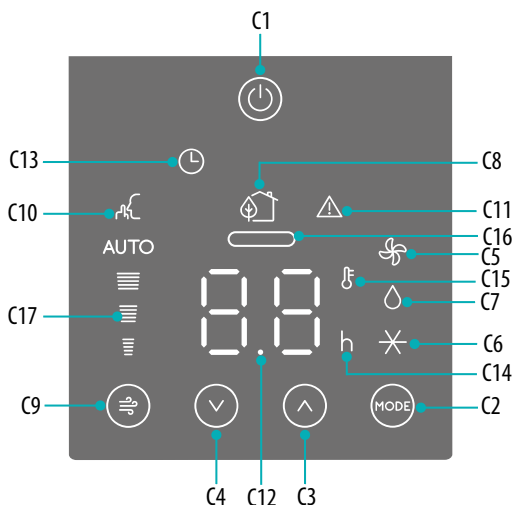


- Fit the wall flange (B1) into the hole.
- Fit the air exhaust hose (B2) into the wall flange (B1) (Fig. 8).
- When the hose (B2) is not connected, the drilled hole can be closed with the flange cap (B1).

**Please note:** As special tools are required for installation, we suggest you have the appliance installed by specialized personnel.

- When installing the air conditioner, you should leave a door slightly open little as 1 cm to guarantee correct ventilation and room pressure.
- Keep the air hose as short and free of curves as possible to avoid constrictions.

## Operating from the control panel



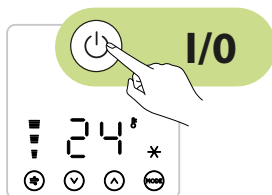
## Description of the control panel


- C1.** ON/STAND-BY (on/off) key
- C2.** MODE key
- C3.** Temperature increase key
- C4.** Temperature decrease key
- C5.** Fan symbol
- C6.** Air conditioning symbol
- C7.** Dehumidifying symbol
- C8.** Eco Real Feel symbol
- C9.** Fan speed key
- C10.** Silent symbol
- C11.** General alarm symbol
- C12.** Set temperature values, programmed on/off time
- C13.** Timer symbol
- C14.** Timer hours indicator
- C15.** Temperature indicator
- C16.** Eco Real Feel status indicator
- C17.** Selected fan speed indicator

## Control panel operation


### Turning the appliance on and off

Insert the plug in the socket. Two dashes appear on the display indicating that the appliance is in stand-by.

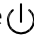


Touch the  (C1) key to turn on the appliance.

When the appliance comes on the last function set before it was shut off is activated.

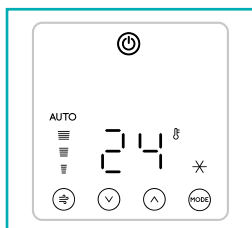
To turn the appliance off, touch the  key.

**Please note:** If start-up is not continued, after a few minutes the display light dims in order to reduce energy consumption.

**Please note:** Never turn off the air conditioner by simply pulling the plug. Touch the  key in order to put your air conditioner in stand-by and wait a few minutes before pulling the plug. In this way, the appliance can perform the operating status checks.

## Mode selection

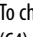
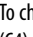

To select the desired operating mode, touch repeatedly the MODE key (C2) until the desired function is selected.



### ✱ Air Conditioning mode

This is ideal for hot and humid weather when the room needs to be both cooled and dehumidified.

To correctly set this mode:

- Touch repeatedly the **MODE** key (C2) until the air conditioning ✱ symbol appears. Wait a few seconds for the command to be acquired. The display will show the desired temperature.
- To change the temperature to be reached, touch the  (C3) or  (C4) key.
- Select the desired fan speed by touching the  (C9) key.

The air flows available are:

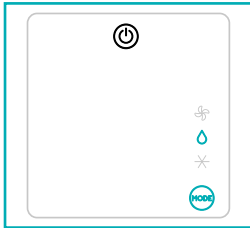
**Minimum air flow:** when maximum silent operation is desired.

**Medium air flow:** when the noise level needs to be low but with a good comfort level.

**Maximum air flow:** to reach the desired temperature as soon as possible.

**Auto:** The appliance automatically chooses the best fan speed based on the temperature selected and the environmental conditions.

*The most suitable temperatures during the summer range from 24 to 27°C. However, setting the temperature significantly lower than the outdoor temperature is not recommended.*

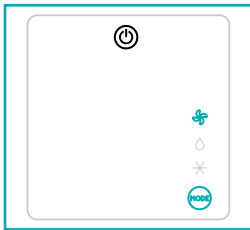


### △ Dehumidifying mode

This is ideal for reducing humidity in the room (spring and autumn, damp rooms, rainy periods, etc). For this type of use, the appliance must be set up as for air conditioning mode. That is, the air exhaust hose (B2) must be fitted to the appliance to allow the humidity to be discharged outside.

To correctly set this mode:

- Touch repeatedly the **MODE** key (C2) until the dehumidifying △ symbol appears. Wait a few seconds for the command to be acquired.
- The appliance will automatically choose the best air flow.



### ✪ Fan mode

When using this mode, the air exhaust hose (B2) does not need to be attached to the appliance.

To correctly set this mode:

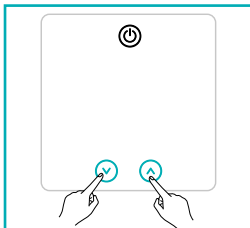
- Touch repeatedly the **MODE** (C2) key until the fan ✪ symbol appears. Wait a few seconds for the command to be acquired.
- Select the desired fan speed by touching the ⇄ (C9) key.

The air flows available are:

**Minimum air flow:** when most silent operation is desired.

**Medium air flow:** when the noise level needs to be low but with a good comfort level.

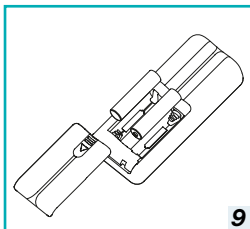
**Maximum air flow:** for maximum performance.



### Select the temperature scale

The temperature can be displayed in °C or °F.

To change the temperature unit of measure touch simultaneously for ten seconds the increase ^ (C3) and decrease v (C4) keys.



## Operating from the remote control

### Inserting or replacing the batteries

- Remove the cover on the rear of the remote control;
- Insert or replace the batteries with two new LR03 "AAA" 1.5V batteries, inserting them correctly (see the directions inside the battery compartment) (fig. 9);
- Replace the cover.

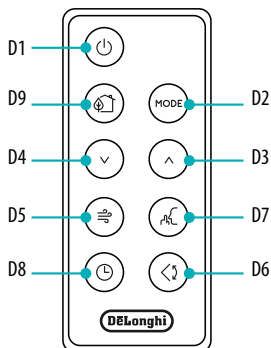
**Please note:** If the remote control unit is replaced or discarded, the batteries must be removed and disposed of in accordance with current legislation as they are harmful to the environment. Do not mix old and new batteries.

Do not mix alkaline, standard (carbon-zinc) or rechargeable (nickel-cadmium) batteries. Do not dispose of batteries in fire. Batteries may explode or leak. If the remote control is not be used for a certain length of time, remove the batteries.

### Using the remote control

- Point the remote control at the receiver (A11) on the air conditioner. The remote control must be no more than 7 metres away from the appliance (without obstacles between the remote control and the receiver).
- The remote control must be handled with care. Do not drop it or expose it to direct sunlight or sources of heat.

**Please note:** The remote control can be safely stored in the appropriate compartment (A12).

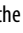



### Description of the remote control


- D1.** ON/STAND-BY button
- D2.** MODE button
- D3.** Increase button
- D4.** Decrease button
- D5.** Air flow button
- D6.** Swing button
- D7.** Silent button
- D8.** Timer button
- D9.** Eco Real Feel button

---

### Turning the appliance ON/OFF

- Plug into the outlet.
- Press the  button (D1), when turned on, the air conditioner starts operating in the same mode as when it was turned off.
- To switch the appliance off, press the  button (D1).

**Please note:** Never switch the appliance off by removing the plug.

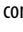

Always switch it off by pushing the  button and waiting few minutes before removing the plug. Only in this way the appliance will perform the standard checkings.

### Selecting the operating modes

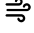
To select the desired operating mode, press repeatedly the MODE button (D2) until the desired function is selected.

Most of the commands available on the remote control correspond to those on the appliance control panel.

### Selecting the temperature

In conditioning mode press  (D3) and  (D4) buttons to increase/decrease/increase the desired temperature.

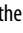

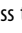
### Selecting the air flow

In conditioning and fan modes, press  (D5) button to decrease/increase the desired air flow.

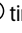
### Setting the timer

The timer allows the delayed start up or shut down of the appliance. This function will prevent wasting electricity by optimising the operating periods.

#### How to program delayed shut down

- While the appliance is on in any operating mode, delayed shut down can be programmed.
- Press the  timer button (D8), the timer symbol (C13) and hours (C14) light up.
- Press the  (D3) and  (D4) buttons until the desired number of hours to shut down appears on the display.

A few seconds after the timer is set, the setting is acquired, the display shows the operating mode and the timer symbol stays lit.

Once the set time is elapsed, the air conditioner goes into standby. To cancel the timer program, press the  timer button (D8) twice. The timer symbol (C13) will go off.

**Please note:** Once the timer has been activated, by pressing the timer button only one time, the remaining hours to shut down will be displayed.

### How to program delayed start up

- Plug in the appliance and set to standby.
- Press the ☹ timer button (D8), the timer symbol (C13) and hours (C14) light up.
- Press the ^ (D3) and v (D4) buttons until the desired number of hours to start up appears. Start up can be programmed at any time within the 24 hours that follow.

A few seconds after the timer is set, the setting is acquired, the display shows the operating mode and the timer symbol stays lit.

When the set time is elapsed, the appliance will start to operate in the same operating mode that was previously set.

To cancel the timer program, press the timer button (D8) twice.

The timer symbol (C13) will go off.

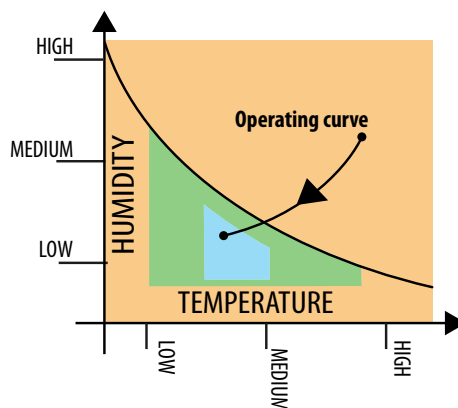
**Please note:** Once the timer has been activated, by pressing the timer key only one time, the remaining hours to the start up will be displayed.



### Eco Real Feel function

Eco Real Feel is the innovative De'Longhi technology that works simultaneously on temperature reduction and humidity control, securing best comfort level. With traditional systems, during working time, optimal comfort conditions may be reached but not secured over time. With Eco Real Feel, once optimal comfort is reached, PAC automatically modulates compressor action and air flow, to keep it over time.

To activate the function, press the Eco Real Feel button (D9). The Eco Real Feel symbol (C8) appears.



After approx. 1 minute, the ECO REAL FEEL indicator (C16) turns on. It changes color when approaching the best comfort level (see graph below).



---

**ORANGE LIGHT:** Room conditions far from optimal level.

**GREEN LIGHT:** Most people feel good room conditions, near optimal level.

**BLUE LIGHT:** Best comfort level.

- The well-being feeling is a subjective condition. For this reason, different people may judge differently the same environmental conditions.
- In particularly severe environmental conditions (large size of the environment, high temperature or humidity outside, poor insulation of the room, too many of people or strong heat load in the room, strong exposure to the sun ...) this device may not be able to reach the best comfort level.

### **Silent function**

By activating this function (available in conditioning mode only) the operating noise is further reduced. To activate it, press silent button (D7) on the remote control. The display shows the relative symbol (C10).

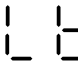
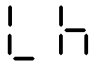
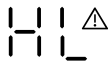
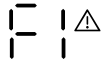
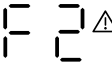
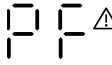
### **Swing function**

The swing button (D6) activates and deactivates the swing function. When the internal fan is running, the swing function distributes the air evenly into the room moving the flap forwards and backwards alternatively. If pressed again, the flap will be locked into its current position.

**NOTE:** If the fan is not running, the swing function will also not operate. In order to avoid damaging the internal mechanisms, the flap must not be moved manually.

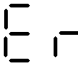
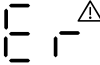
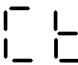
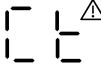
## AP Self-diagnosis

The appliance has a self diagnosis system to identify a number of warning/malfunctions. Error messages are displayed on the appliance display.

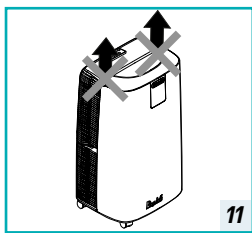
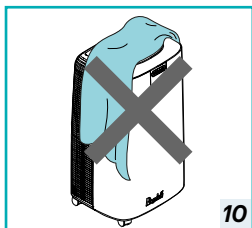
IF ... IS DISPLAYED,	IF ... IS DISPLAYED,	IF ... IS DISPLAYED,	IF ... IS DISPLAYED,	IF ... IS DISPLAYED,	IF ... IS DISPLAYED,
					
"Low Temperature" (Frost prevention)	"Low humidity"	"High Level" (Internal tray full) and general alarm	Failure 1 and general alarm	Failure 2 and general alarm	"Probe Failure" (Probe damaged) and general alarm
<b>..WHAT SHOULD I DO?</b>	<b>..WHAT SHOULD I DO?</b>	<b>..WHAT SHOULD I DO?</b>	<b>..WHAT SHOULD I DO?</b>	<b>..WHAT SHOULD I DO?</b>	<b>..WHAT SHOULD I DO?</b>
The appliance is fitted with a frost protection device to avoid excessive formation of ice. The appliance starts up again automatically when the defrosting process is completed.	The message will only be displayed when in Eco Real feel function, indicating that the room humidity level is extremely low. To resume operation, switch the unit to any other mode other than the Eco Real Feel function.	Empty the internal safety tank following the instructions in the section "End of season operations".	If this appears, consult the nearest authorized service centre.	If this appears, consult the nearest authorized service centre.	If this appears, consult the nearest authorized service centre.

## AP Self-diagnosis (some models only)

The appliance has a self diagnosis system to identify a number of warning/malfunctions. Error messages are displayed on the appliance display.

IF ... IS DISPLAYED,	IF ... IS DISPLAYED,	IF ... IS DISPLAYED,	IF ... IS DISPLAYED,
			
Anomaly in the appliance performance	Anomaly in the appliance performance and general alarm	"Compressor temperature" very high	"Compressor temperature" very high and general alarm
<b>..WHAT SHOULD I DO?</b>	<b>..WHAT SHOULD I DO?</b>	<b>..WHAT SHOULD I DO?</b>	<b>..WHAT SHOULD I DO?</b>
When this appears flashing, the appliance is providing a checking and is operating some functions cycles, afterwards this alarm will disappear.	If this appears steady, consult the nearest authorized service centre. To reset the alarm, the unit must be unplugged the re-plugged.	When this appears flashing, the air flow is temporarily forced at maximum, then the air flow should return to the correct values.	If this appears steady, the protection device has intervened to avoid excessive temperature of the compressor. To reset the alarm, the unit must be unplugged then re-plugged.


## AP Tips for correct use



To ensure optimal results from your air conditioner, follow these recommendations:

- close the windows and doors in the room to be air conditioned. When using the air conditioner with installation, you should leave a door slightly open (as little as 1 cm) to guarantee proper ventilation.
- Never use the appliance in very damp rooms (laundries for example).
- Protect the room from direct exposure to the sun by partially closing curtains and/or blinds to make the appliance much more economical to run.
- Never use the appliance outdoors.
- Make sure there are no heat sources in the room.
- Make sure the air conditioner is standing on a level surface.
- Do not cover the appliance (fig. 10).
- Never rest objects of any kind on the air conditioner.
- Never obstruct the air intake or outlet flap.
- Never lift the appliance from the air outlet conveyor, use the handles (fig. 11).

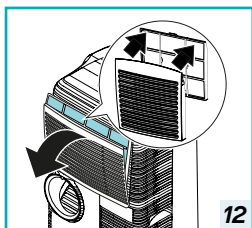
### Cleaning

Before cleaning or maintenance, turn the appliance off by pressing the  button, then unplug from the outlet.

### Cleaning the cabinet

You should clean the appliance with a slightly damp cloth then dry with a dry cloth. For safety reasons, never wash the air conditioner with water.

**Attention!** Never use petrol, alcohol or solvents to clean the appliance. Never spray insecticide liquids or similar.



### Cleaning air filter

The filter helps capture dust and pollen.

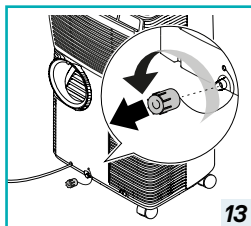
If the filter is dirty, air circulation is compromised and the efficiency of the appliance decreases. It is therefore good practice to clean the filter at regular intervals. The frequency depends on the duration and conditions of operation. If the unit is used constantly or systematically, you are recommended to clean the filter once a week.

The filter is housed in the intake grille. To clean the filter, extract as shown in fig. 12. Use a vacuum cleaner to remove the dust collected on the filter. If it is very dirty, immerse in warm water and rinse a number of times. The water should never be hotter than 40°C.

After washing the filter, allow it to dry completely before repositioning it.

### Start of season checks

Make sure the power cable and plug are undamaged and the earth system is efficient. Follow the installation instructions precisely.



### End of season operations

When storing the appliance we suggest you to drain all water from the circuit: remove the external cap (A10) by unscrewing it in the anticlockwise direction (fig. 13) and allow the water to drain out into a basin.

When the appliance is empty, replace the caps.

Clean the filter and dry thoroughly before putting back.

### Technical specifications

Power supply voltage      see rating label

Max. absorbed power  
during air conditioning      "

Refrigerant      "

Cooling capacity      "

### Limit conditions

Room temperature for air conditioning       $18^{\circ} \div 35^{\circ}\text{C}$

**Transport, filling, cleaning, recovery and disposal of refrigerant should be performed by a technical service centre appointed by the manufacturer only.**

**The appliance should be disposed of by a specialist centre appointed by the manufacturer only.**

### Attention! TO AVOID DAMAGE TO THE UNIT:

NEVER TRANSPORT OR TURN THE APPLIANCE UPSIDE DOWN OR ON ITS SIDE. IF THIS OCCURS, WAIT 6 HOURS BEFORE TURNING THE APPLIANCE ON, 24 HOURS IS RECOMMENDED. After the unit has been on its side, oil needs to return to the compressor to ensure proper function. Without allowing the unit this time (6-24 hours) the unit may function for only a short time, and then the compressor will break down from lack of oil.

PROBLEM	CAUSE	SOLUTION
The air conditioner does not come on	it is not plugged into the outlet	plug into the outlet
	there is no current	wait
	the internal safety device has tripped	call the authorised service centre
The air conditioner works for a short time only	there are bends or kinks in the air exhaust hose	position the air hose correctly, keeping it as short and free of curves as possible to avoid bottlenecks
	something is preventing the air from being discharged	check and remove any obstacles obstructing air discharge
The air conditioner works, but does not cool the room	windows, doors and/or curtains open	close doors, windows and curtains, bearing in mind the "Tips for correct use" given above
	there are heat sources in the room (oven, hairdryer, etc.)	eliminate the heat sources
	the air exhaust hose is detached from the appliance	fit the air exhaust hose in the housing at the back of the appliance (fig. 1).
	filter clogged	clean or replace the filter as described above
	the technical specification of the appliance is not adequate for the room in which it is located.	
During operation, there is an unpleasant smell in the room	filter clogged	clean the filter as described above
The air conditioner does not operate for about three minutes after restarting it	an internal safety device prevents the appliance from being restarted until three minutes have elapsed since it was last turned off	wait. This delay is part of normal operation.
One of the following messages is displayed: Lt/ Lh/ HL/ F1/ F2/ PF/ (Er/ Ct only for AP98)	the appliance has a self diagnosis system to identify a number of malfunctions.	see the Self-diagnosis chapter

