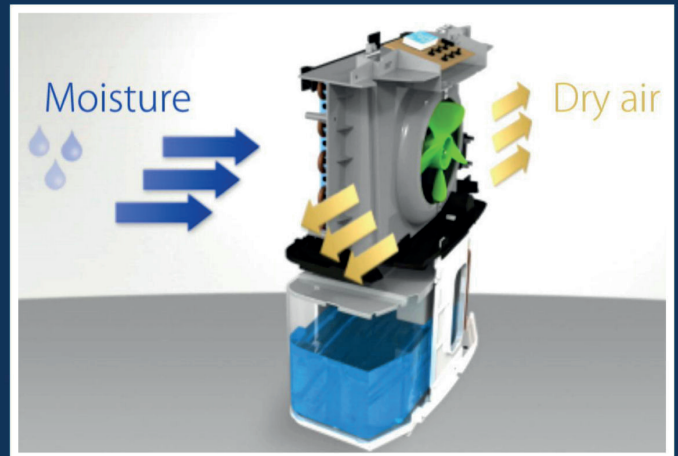
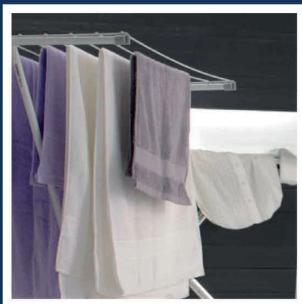


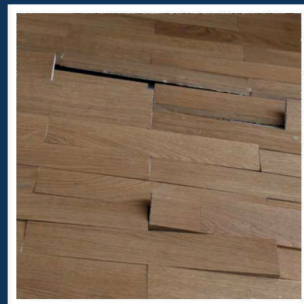
Your De'longhi dehumidifier removes excess moisture from the room and deposits into the water tank



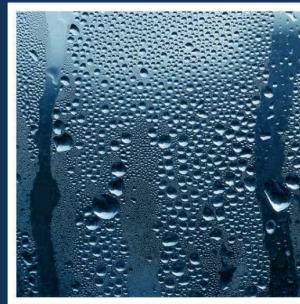
Examples of excess moisture



Wet laundry



Swollen wooden floors



Condensation



Mould deposits

If your dehumidifier is not collecting as much water as expected

Please consider the following:

Room Temperature - Your dehumidifier is more effective when pulling in warm moisture. If the room is too cold less water will be extracted. The ideal room temperature is 17°C or above.

Important - During normal operation the **low temperature** indication light can come on in room temperatures up to 17°C. This does not indicate a fault with the unit.
Certain models only

Relative humidity - This is the dampness in the air of the room. If the environment is too dry or there are no sources of humidity, the dehumidifier will not collect as much water as expected in the tank

Always ensure that the filter is regularly cleaned. If the filter is dirty, air circulation can be compromised and the efficiency of the dehumidifier may be reduced. Please refer to your user instructions.

If you have a query regarding operation of your product or you want to find out more, please visit www.delonghi.co.uk and click on the Customer Experience tab

De'Longhi