
EXAM44X.5Y

RIVELIA

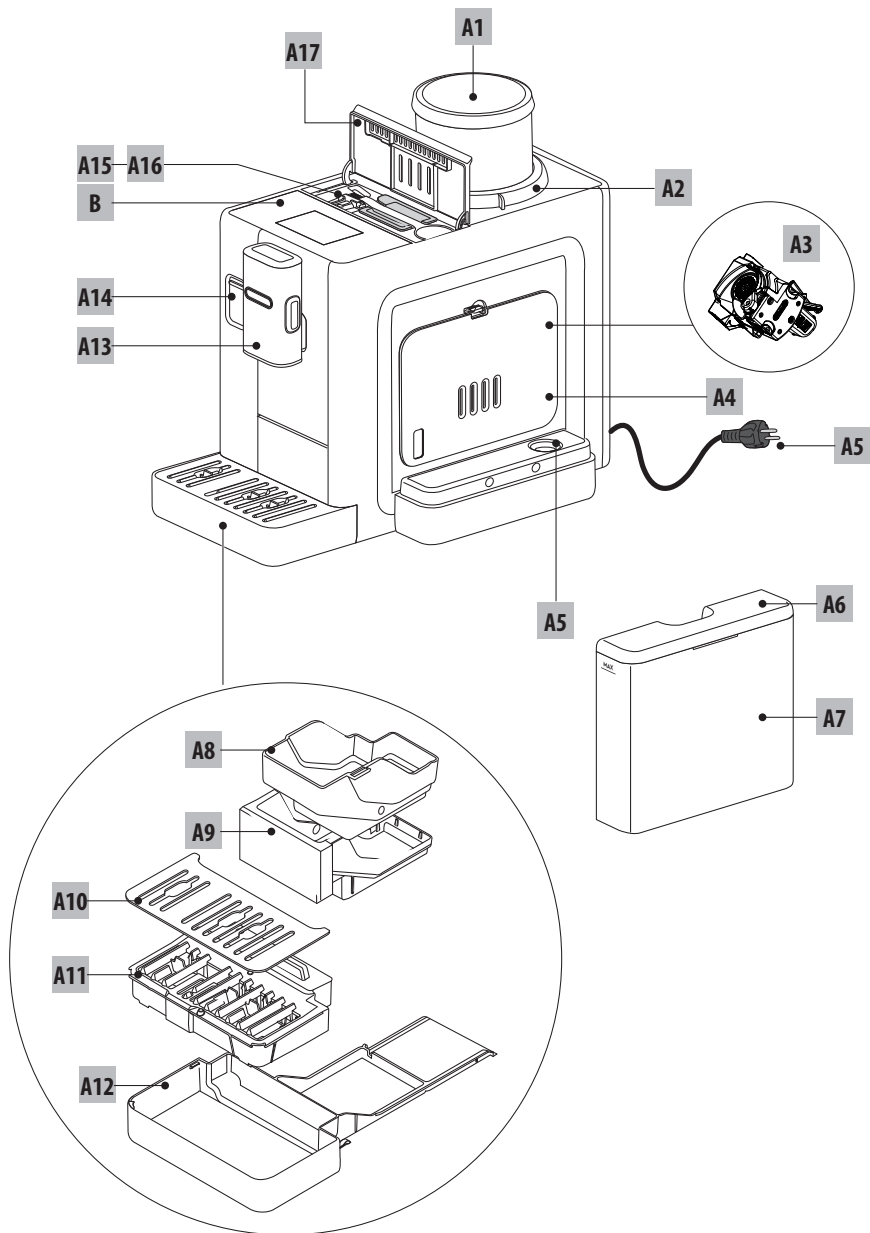
BEAN TO CUP ESPRESSO AND
CAPPUCCINO MACHINE

Instruction for Use

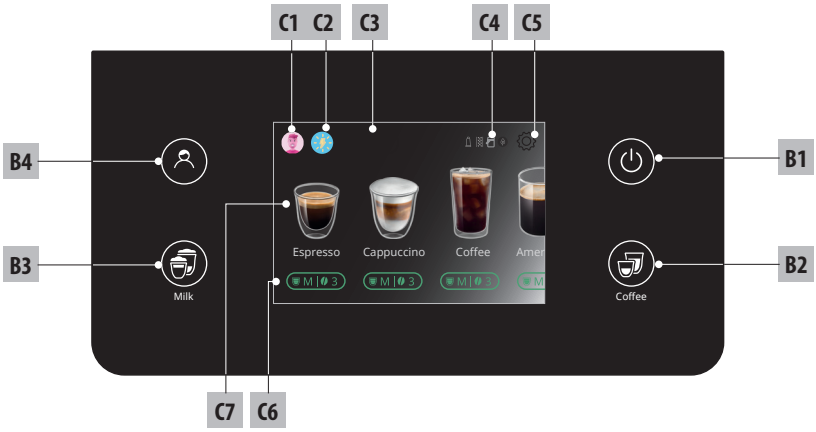


DeLonghi

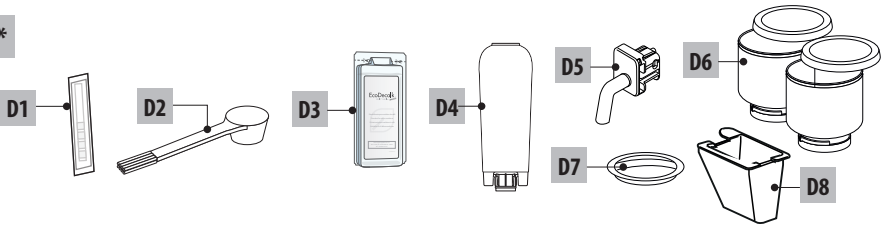
A



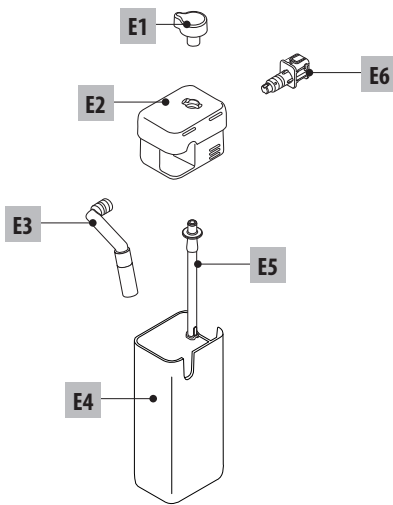
B C



D*



E LatteCrema HOT



CONTENTS

| | |
|---|-----------|
| 1. FUNDAMENTAL SAFETY WARNINGS..... | 5 |
| 2. GENERAL INFORMATION..... | 5 |
| 2.1 Instruction for Use..... | 5 |
| 3. BEFORE USE..... | 6 |
| 3.1 Checking the appliance | 6 |
| 3.2 Installing the appliance..... | 6 |
| 3.3 Connecting the appliance..... | 6 |
| 3.4 Setting up the appliance | 6 |
| 3.5 What water to use? | 6 |
| 3.6 Cleaning and maintenance of materials in contact with food | 6 |
| 3.7 Making cappuccinos and milk-based drinks .. | 6 |
| 4. INTRODUCTION..... | 6 |
| 4.1 Letters in brackets..... | 6 |
| 4.2 Troubleshooting and repairs..... | 6 |
| 5. DESCRIPTION..... | 7 |
| 5.1 Description of the appliance (A) | 7 |
| 5.2 Description of the control panel (B)..... | 7 |
| 5.3 Description of the homepage (main screen) (C) | 7 |
| 5.4 Description of the accessories (D) (*different for type and number according to model).... | 7 |
| 5.5 Description of milk carafe (E) | 7 |
| 6. SETTING UP THE APPLIANCE | 7 |
| 7. TURNING THE APPLIANCE ON | 9 |
| 8. TURNING THE APPLIANCE OFF | 9 |
| 8.1 Switching off for extended periods | 9 |
| 9. MENU SETTINGS | 9 |
| 9.1 Rinsing | 9 |
| 9.2 Descaling | 10 |
| 9.3 Water filter | 10 |
| 9.4 General | 10 |
| 9.5 Auto-off | 10 |
| 9.6 Support..... | 10 |
| 9.7 Grind & Empty..... | 10 |
| 9.8 Milk carafe cleaning | 10 |
| 9.9 Coffee temperature | 10 |
| 9.10 Statistics..... | 11 |
| 9.11 Languages..... | 11 |
| 9.12 Day and time..... | 11 |
| 9.13 Grinder setting | 11 |
| 9.14 Water hardness | 11 |
| 9.15 Empty circuit | 11 |
| 9.16 Default values | 12 |
| 10. DRINK SELECTION..... | 12 |
| 11. MAKING COFFEE DRINKS | 12 |
| 11.1 Prepare the machine to make coffee drinks.12 | |
| 11.2 Directly selected drinks | 13 |
| 11.3 Customising the drinks..... | 13 |
| 11.4 Making coffee using pre-ground coffee..... | 13 |
| 11.5 Extra shot..... | 14 |
| 11.6 General indications for making coffee drinks... 14 | |
| 11.7 Tips for a hotter coffee..... | 14 |
| 12. BEAN ADAPT TECHNOLOGY | 15 |
| 13. COFFEE ROUTINE..... | 15 |
| 14. MAKING MILK DRINKS | 15 |
| 14.1 Preparing the milk carafes (E) | 15 |
| 14.2 Which milk to use? | 15 |
| 14.3 Filling and attaching the milk carafe | 16 |
| 14.4 Adjusting the froth..... | 16 |
| 14.5 Making milk drinks..... | 16 |
| 14.6 Cleaning the milk carafe after every use | 16 |
| 15. PREPARING HOT WATER | 17 |
| 16. MAKING “TO GO” DRINKS | 17 |
| 16.1 Cleaning the De’Longhi travel mug after use (sold separately) | 18 |
| 17. CHANGING BEAN HOPPER..... | 18 |
| 18. “MY” FUNCTION (“HOT” DRINKS ONLY) | 18 |
| 19. CLEANING | 19 |
| 19.1 Cleaning the machine | 19 |
| 19.2 Cleaning the internal circuit | 19 |
| 19.3 Cleaning the bean hoppers | 19 |
| 19.4 Cleaning the coffee grounds container..... | 20 |
| 19.5 Cleaning the drip tray and drip tray grille.... | 20 |
| 19.6 Cleaning the inside of the machine | 20 |
| 19.7 Cleaning the water tank..... | 20 |
| 19.8 Cleaning the coffee spouts | 21 |
| 19.9 Cleaning the pre-ground coffee funnel | 21 |
| 19.10 Cleaning the brewing unit..... | 21 |
| 19.11 Complete cleaning of the milk carafes (E) ... | 21 |
| 20. DESCALING | 22 |
| 21. WATER SOFTENER FILTER | 23 |
| 21.1 Installing the filter | 23 |
| 21.2 Replacing or removing the filter..... | 24 |
| 22. DISPLAYED MESSAGES..... | 25 |
| 23. TROUBLESHOOTING | 27 |
| 24. TECHNICAL DATA..... | 29 |
| 24.1 Tips for Energy Saving | 29 |

1. FUNDAMENTAL SAFETY WARNINGS

- The appliance is not intended for use by persons (including children) with reduced physical, sensory or mental capabilities, or lack of experience and knowledge, unless they have been given supervision or instruction concerning use of the appliance by a person responsible for their safety.
- Children should be supervised to ensure that they do not play with the appliance.
- Designated use: this appliance is designed and made to prepare beverages based on coffee, milk and hot water. Use drinking water only in the tank. Never use the accessories to make beverages other than those described in these instructions. Any other use is considered improper and thus dangerous. The manufacturer is not liable for damage deriving from improper use of the appliance.
- The surface of the heating element remains hot after use and the outside of the appliance may retain the heat for several minutes depending on use.
- Clean all the components thoroughly, taking particular care with parts in contact with the milk.
- Cleaning and user maintenance shall not be made by children without supervision.
- Never clean by immersing the appliance in water.
- IMPORTANT: to prevent damage to the appliance, do not clean with alkaline detergents; use a soft cloth and, where applicable, neutral detergent.
- This is an household appliance only. It is not intended to be used in: staff kitchen areas in shops, offices and other working environments; farm houses; by clients in hotels, motels and other residential type environments; bed and breakfast type environments.
- If the plug or power cord is damaged, it must be replaced by customer services only to avoid all risk.
- Appliances with removable cord: avoid splashes of water on the power cord connector or socket at the back of the appliance.
- IMPORTANT: Models with glass surfaces: do not use the appliance if the surface is cracked.
- The coffee maker must not be placed inside a cabinet or kitchen unit during use



Never clean the machine by immersing it in any kind of liquid.

FOR EUROPEAN MARKETS ONLY:

- This appliance can be used by children aged from 8 years and above if they have been given supervision or instruction concerning use of the appliance in a safe way and understand the hazards involved. Cleaning and user maintenance shall not be made by children unless they are above 8 years old and supervised. Keep the appliance and power cord away from children under 8 years of age.

- The appliance can be used by persons with reduced physical, sensory or mental capabilities or lack of experience and knowledge if they are supervised or have been given instruction concerning use of the appliance in a safe way and if they understand the hazards involved.
- Children shall not play with the appliance.
- Always unplug the appliance when left unattended and before assembly, taking apart or cleaning.



Surfaces marked with this symbol become hot during use (the symbol is present in certain models only).

This is an electrical appliance and may cause electric shock. You should therefore follow these safety warnings:

- Never touch the appliance with damp hands or feet.
- Never touch the plug with damp hands.
- Make sure the socket used is freely accessible at all times, enabling the appliance to be unplugged when necessary.
- Unplug directly from the plug only. Never pull the cord as you could damage it.
- To disconnect the appliance completely you must unplug it from the mains socket.
- If the appliance is faulty, do not attempt to repair. Turn it off, unplug from the mains socket and contact Customer Services.
- Before cleaning the appliance, turn it off, unplug from the mains socket and allow to cool.

Important!

Keep all packaging (plastic bags, polystyrene foam) away from children.

CHOKING HAZARD. The appliance might contain small parts. Some of those small parts might be required to get disassembled during cleaning and maintenance operations. Handle with care and keep small parts out of reach of children.

Danger of burns!

This appliance produces hot water and steam may form while it is in operation.

During operation (automatic rinsing, hot beverage delivery, steam delivery, cleaning), avoid contact with splashes of hot water or steam.

When the appliance is in operation, the cup shelf could become very hot.

2. GENERAL INFORMATION

2.1 Instruction for Use

Read all the Instruction for Use carefully before using the appliance. Failure to follow this Instruction for Use may result in burns or damage to the appliance.

The manufacturer is not liable for damage deriving from failure to respect this Instruction for Use.

Please note:

These safety warnings are valid for all De'Longhi coffee machines.

Keep this leaflet together with the instructions accompanying the appliance.

If the appliance is passed to other persons, they must also be provided with this Instruction for Use.

3. BEFORE USE

3.1 Checking the appliance

After removing the packaging, make sure the product is complete and undamaged and that all accessories are present. Do not use the appliance if it is visibly damaged. Contact De'Longhi Customer Services.

3.2 Installing the appliance

When you install the appliance, you should respect the following safety warnings:

- Use this appliance on a horizontal and stable surface.
- The appliance gives off heat. After positioning the appliance on the worktop, leave a space of at least 3 cm between the surfaces of the appliance and the side and rear walls and at least 15 cm above the coffee maker.
- Water penetrating the appliance could cause damage. Do not place the appliance near taps or sinks.
- The appliance could be damaged if the water it contains freezes. Do not install the appliance in a room where the temperature could drop below freezing point.
- Arrange the power cord in such a way that it cannot be damaged by sharp edges or contact with hot surfaces (e.g. electric hot plates).

3.3 Connecting the appliance

Check that the mains power supply voltage corresponds to that indicated on the rating plate on the bottom of the appliance.

Connect the appliance to an efficiently earthed and correctly installed socket with a minimum current rating of 10A only.

If the power socket does not match the plug on the appliance, have the socket replaced with a suitable type by a qualified professional.

3.4 Setting up the appliance

The first time you use the machine, the water circuit is empty and the appliance could be very noisy. The noise becomes less as the circuit fills.

3.5 What water to use?

- Potable fresh water is recommended.
- Do not use sparkling (carbonated) or distilled water

3.6 Cleaning and maintenance of materials in contact with food

- When utilized for the first time, or after 3 days without use, clean the appliance and the removable accessories that come into contact with water, coffee and milk, as indicated in the instructions for use. Check in the instructions which accessories are dishwasher safe.
- After 3 days without the machine being used, before making any further drinks, change the water in the tank and rinse out the circuit as described in the instructions. If the machine is not going to be used for a period longer than 3 days, it is advisable to empty the water tank.
- Be certain to take maximum care when carrying out all cleaning and maintenance operations described in the instructions for use and/or prompted by the display or warning lights of the appliance itself.

3.7 Making cappuccinos and milk-based drinks

- The machine can be used both with cow's milk and with plant-based beverages.
- Do not use raw milk.
- Use pasteurized or UHT milk, or plant-based beverages kept and stored in accordance with the indications given by the producer.
- The cleaning methods described in the instructions do not guarantee the complete removal of allergens.
- Before dispensing any kind of drink, make certain that the machine has not been operated previously using types of milk, or types of plant-based beverage, containing allergens to which you may be allergic or substances you may be intolerant to.
- In the event that unused milk or plant-based beverage may be left in the jug, this can be kept in the refrigerator for further use, observing the indications for storage given by the producer of the beverage, and under no circumstances for longer than 2 days. If the milk jug is not returned to the refrigerator, empty the contents and clean the jug as described in the instruction manual.

4. INTRODUCTION

4.1 Letters in brackets

The letters in brackets refer to the description of the appliance on pages 2- 3.

4.2 Troubleshooting and repairs

In the event of problems, first try and resolve them by reading the information given in sections "22. Displayed messages" and "23. Troubleshooting".

If this does not resolve the problem or further information is required, consult the customer services department at the numbers indicated on the website www.delonghi.com.

If repairs are required, contact De'Longhi customer services only. Addresses can be found on the website www.delonghi.com.

5. DESCRIPTION





5.1 Description of the appliance (A)

- A1. Bean hopper
- A2. Grinding coarseness regulator
- A3. Brewing unit
- A4. Brewing unit door
- A5. Power cord
- A6. Water tank lid
- A7. Water tank
- A8. Coffee grounds container
- A9. Coffee grounds container support
- A10. Cup tray
- A11. Tray grille
- A12. Drip tray
- A13. Coffee spouts (adjustable height)
- A14. Accessories connector with lid
- A15. Hot water spout housing
- A16. Removable pre-ground coffee funnel
- A17. Accessories storage lid

5.2 Description of the control panel (B)

- B1.  ON/Standby
- B2.  "Coffee" drinks menu
- B3.  "Milk" drinks menu
- B4.  "Profile" selection

5.3 Description of the homepage (main screen) (C)

- C1. Selected profile
- C2. Coffee routine icon
- C3. Bean Adapt Technology
- C4. Indicator lights:
 -  Energy saving active light
 -  Milk carafe cleaning required light
 -  Descaling required light
 -  Filter exhausted light
- C5. Settings
- C6. Drink customising
- C7. Drink selection

5.4 Description of the accessories (D) (*different for type and number according to model)

- D1. "Total Hardness Test" indicator paper
- D2. Pre-ground coffee scoop/cleaning brush
- D3. Descaler
- D4. Water softener filter

- D5. Hot water spout
- D6. Bean hopper with upper lid (2 in pack)
- D7. Grinder protection lid
- D8. Extractable funnel

5.5 Description of milk carafe (E)

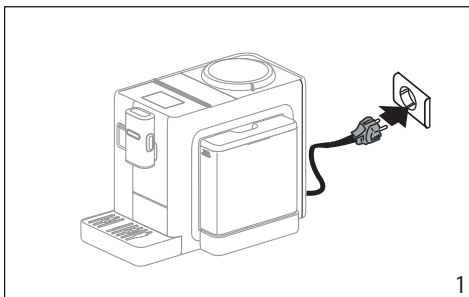


- E1. Froth adjustment/Clean dial
- E2. Milk carafe lid
- E3. Milk spout (adjustable height)
- E4. Milk spout extension
- E5. Milk container
- E6. Milk intake tube
- E7. Milk carafe connector (removable for cleaning)

6. SETTING UP THE APPLIANCE

Please note:

- Possible traces of coffee in the grinder are the result of settings tests performed on the appliance before sale, proof of the meticulous care and attention we invest in our products.
 - The first time you use the appliance, all removable accessories (milk carafe (E), water tank (A7) and (A6), hot water spout (D5)) destined to come into contact with water or milk should be rinsed with hot water. We recommend washing the milk carafe in a dishwasher.
1. Connect the power cord (A5) to the mains supply (fig. 1).



The machine switches on and leads you to set it up: follow the instructions on the display and your machine will be ready for coffee!

Select your language:

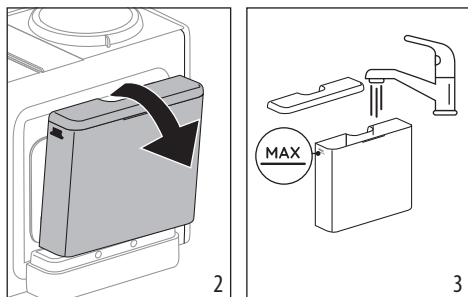
2. Press the flag corresponding to the desired language, then press "Done" for next step.

Set time and day

3. Set time zone, then press "Next".
4. Set current day and time, then press "Next".

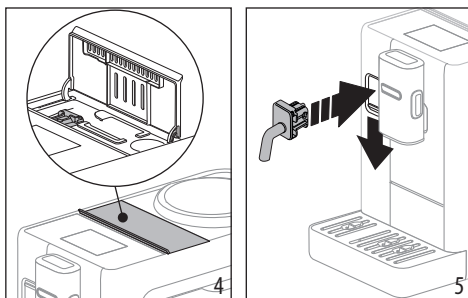
Fill the water tank

5. Remove the water tank (A7) (fig. 2) and fill to the MAX line with fresh potable water (fig. 3), then press "Next".



Set up the machine

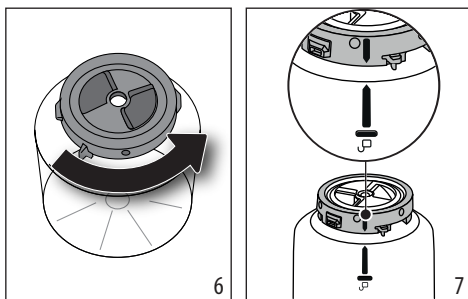
- Open the accessories storage lid (A17) and take out the hot water spout (D5) (fig. 4).



- Slide down the accessory connector lid and insert the hot water spout (fig. 5). Press "Next"
- Check that the grinding coarseness regulator (A2) is on "5", then press "Next".
- Remove the grinder protection lid (D7). Press "Next".

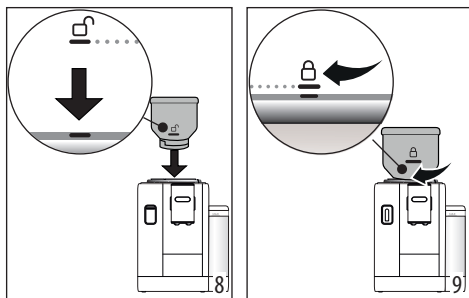
Insert the bean hopper

- Take one bean hopper (D6), turn it upside down and ensure the lower part is closed well rotating it until it clicks (fig. 6). The bean hopper is correctly closed when the two arrows are aligned (fig. 7). Press "Next".



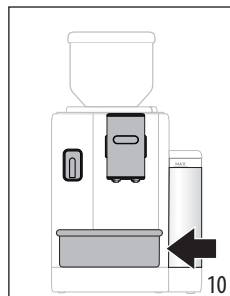
- Fill the bean hopper with coffee beans. Press "Next".
- Insert the bean hopper in its housing and rotate it clockwise to lock it. For correct operation, align the "unlock"

symbol to the mark on the ring (fig. 8) and, once inserted, rotate it to the "lock" position (fig. 9). Press "Next".



Prime the machine

- Place a container with a minimum capacity of 200 ml under the coffee spouts (A13) and hot water spout (fig. 10).



- Press "Yes" to start rinsing. Wait until delivery automatically stops.

Tips

A couple of tips appear on the display. Read paying attention: this will help when using the machine. Press "Next" to continue.






Test water hardness

The descaling alarm is displayed after a period of time established according to water hardness. The machine can also be programmed according to the actual hardness of the local water supply, so that the descaling procedure will be required less frequently. Proceed as follows:

- Press "Start" and remove the "Total hardness test" indicator paper (D1) from its pack. Press "Next".
- Immerse the paper completely in a glass of water for about one second.
- Remove the strip from the water and shake lightly. After about a minute, 1, 2, 3, or 4 red squares appear, depending on the hardness of the water. Each square corresponds to 1 level. Press "Next".

Set water hardness

- Press the dot corresponding to the water hardness measured previously as indicated in the following table.

| Total Hardness Test (D1) | Water hardness |
|---|----------------|
| <p>Green</p>  <p>Red Green</p>  | Level 1 |
| <p>Red Green</p>  | Level 2 |
| <p>Red Green</p>  | Level 3 |
| <p>Red</p>  | Level 4 |

19. Press “Ok”.


The machine is now reprogrammed with your water hardness setting.

Please note:

You can change the water hardness setting any time using the dedicated function in the menu setting (see “9.14 Water hardness”).

Profiles

20. Set how many people will use the machine. Press “Next”.

21. To customise the number, press  on the profile icon, make the choices, then press the button showing the name, press “Change”, and finally press “Save”.

22. Press “Next”. the profiles are confirmed.

Tutorial

23. Press “Next”: the machine is ready for a short tutorial.

24. Press “Start” and watch the display.

25. Now the machine shows its main features. Press “Next” to move on.

Once finished the introduction, press “Start” and enjoy your machine.

Please note:

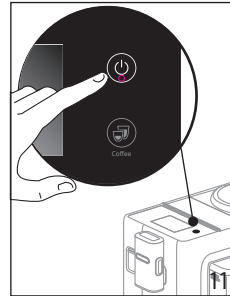
- The first time you use the machine, you need to make 4-5 cappuccinos before the results in the cup will be satisfactory.
- The first time you use the machine, the water circuit is empty and the appliance could be very noisy. The noise becomes less as the circuit fills.

7. TURNING THE APPLIANCE ON

Please note:

- Each time the appliance is turned on, it performs an automatic preheat and rinse cycle which cannot be interrupted. The appliance is not ready for use until the cycle has been completed.


1. To turn the appliance on, press the  button (B1) (fig. 11): the appliance comes on



2. When at temperature, the appliance performs a rinse cycle delivering hot water from the coffee spouts (A13); as well as heating the boiler, this also heats the internal circuits by circulating hot water.

8. TURNING THE APPLIANCE OFF

Whenever the coffee machine is turned off after being used to make coffee, it performs an automatic rinse cycle.

1. To turn the machine off, press the  button (B1) (fig. 11).
2. If a coffee drink has been delivered, the appliance rinses the coffee spouts (A13) with hot water, then goes off (stand-by).


Important!

Never unplug while the appliance is on.

8.1 Switching off for extended periods

If the machine is not going to be used for any length of time (e.g. holidays, periods of absence), follow the directions in heading “9.15 Empty circuit”.

In the event of the machine not being used for a few days, proceed as follows:

- Press the  button (B1) to turn the machine off;
- empty out and clean the grounds container (A8) and the water tank (A7);
- unplug the power cord from the socket.

Please note:

When turning the machine on again, fill the water tank and, before making any kind of drink, run 3 rinse cycles as indicated in section “9.1 Rinsing”.


9. MENU SETTINGS

9.1 Rinsing

Use this function to deliver hot water from the coffee spouts (A13), to clean and heat the appliance’s internal circuit.

Place a container with a minimum capacity of 200 ml under the spouts (fig. 10).

To enable the function, proceed as follows:

1. Enter the setting menu by pressing  (C5);
2. Scroll through the pages until "Rinsing" is displayed;
3. Press "Yes" to start delivery. After a few seconds, hot water is delivered to clean and heat the appliance's internal circuit;
4. To stop rinsing, press "Stop" or wait for rinsing to stop automatically.

Please note:

- If the appliance is not used for more than 3 days, you should clean and fill the water tank with fresh potable water. We strongly recommend to perform 2-3 rinses before brewing your drink.
- After rinsing, it is normal for the grounds container (A8) to contain water.



9.2 Descaling

For instructions on descaling, see section "20. Descaling".

9.3 Water filter

For instructions on the filter (D4), see section "21. Water softener filter".

9.4 General

1. Enter the setting menu by pressing  (C5);
 2. Scroll through the pages until "General" is displayed;
- Here you can enable or disable the following functions with a simple touch:
- "Beep sound": when enabled, the appliance beeps whenever an operation is performed.
 - "Energy saving": use this function to enable or disable energy saving. When enabled, the function reduces energy consumption in compliance with European regulations.
-  is displayed on the homepage to show it is active.
3. Press "X" to save the new selection and go back to the homepage (C).


Please note:

The serial number of the machine is displayed on the screen: this is useful for identification purposes.

9.5 Auto-off

Auto-off can be set so that the appliance goes off after 15 or 30 minutes, or 1 or 3 hours of inactivity.

To programme auto-off, proceed as follows:

1. Enter the setting menu by pressing  (C5);
2. Scroll through the pages until "Auto-off" is displayed;
3. Select the desired time interval (15 or 30 minutes, or 1 or 3 hours).
4. Press "X" to save the new selection and go back to the homepage (C).


9.6 Support

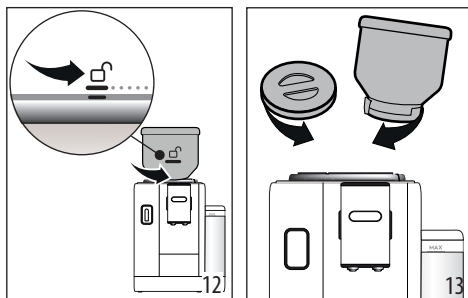
Scan the QR-Code to access manual and get support.

Press "X" to go back to the homepage. (C)

9.7 Grind & Empty

To empty the coffee grinder, grind the remaining beans away:


1. Enter the setting menu by pressing  (C5);
2. Scroll through the pages until "Grind & Empty" is displayed;
3. Press "Read more";
4. Rotate the bean hopper (A1) to the 'unlock' position (fig. 12) and leave it there until the operation finishes;
5. Press "Start": the machine grinds the remaining beans in the grinder;



6. Once finished, remove the bean hopper and insert the other one (see "6. Setting up the appliance") or put the grinder protection lid (D7) (fig. 13);
7. The appliance goes back to the homepage (C).

9.8 Milk carafe cleaning

The appliance proposes a tutorial on a deep cleaning of the carafe to ensure its proper functioning over the time.


1. Enter the setting menu by pressing  (C5);
2. Scroll through the pages until "Milk carafe cleaning" is displayed;
3. Press "Next" or "Back" to read the tips.
4. At the last slide, press "Ok" to go back to the setting menu.
5. Press "X" to go back to the homepage (C).

Please note:

Refer to "19.11 Complete cleaning of the milk carafes (E)".

9.9 Coffee temperature

To change the temperature of the water used to make the coffee, proceed as follows:

1. Enter the setting menu by pressing  (C5);
2. Scroll through the pages until "Coffee temperature" is displayed;
3. Press "Set";
4. Select the required temperature from those proposed;

5. Press “<” to save the new selection and go back to the settings menu.
6. Press “X” to go back to the homepage (C).

Please note:


Varying the temperature has most effect for long drinks.

Bean Adapt Technology :

We suggest accessing Bean Adapt Technology from the homepage, so that this parameter can be set as appropriate for the particular coffee bean used.


9.10 Statistics

This displays statistics relating to the machine. To view the statistics, proceed as follows:

1. Enter the setting menu by pressing  (C5);
2. Scroll through the pages until “Statistics” and the principal statistics are displayed. To view more information, press “Read more”;
3. Press “<” to go back to the settings menu.
4. Press “X” to go back to the homepage (C).


9.11 Languages

To change the language on the homepage, proceed as follows:

1. Enter the setting menu by pressing  (C5);
2. Scroll through the pages until “Languages” is displayed;
3. Press “Set”;
4. Press the flag corresponding to the language you want to set. The display is immediately updated with the selected language;
5. Press “<” to save the new selection and go back to the settings menu;
6. Press “X” to go back to the homepage (C).


9.12 Day and time

To change the day and time on the homepage, proceed as follows:

1. Enter the setting menu by pressing  (C5);
2. Scroll through the pages until “Day and time” is displayed;
3. Press “Set”;
4. Select “Set the time zone”: scroll to select your time zone. Press “Ok”;
5. Select “Set day and time”: scroll to set.
6. Press “<” to go back to the settings menu.
7. Press “X” to go back to the homepage (C).

9.13 Grinder setting

The appliance proposes a tutorial on how to adjust grinding correctly for best results:

1. Enter the setting menu by pressing  (C5);
2. Scroll through the pages until “Grinder setting” is displayed;

3. Press “Read more” to consult the tutorial on how to adjust the grinding coarseness. Press “Next” or “Back” to read the tips.
4. At the last slide, press “Ok” to go back to the setting menu.
5. Press “X” to go back to the homepage (C).

Please note:


- After carrying out the above procedure, we recommend making at least 3 coffees before adjusting again. If the coffee is still not brewed correctly, repeat the procedure.
- The grinding coarseness regulator (A2) must only be turned when the coffee grinder is in operation during the initial phase of coffee preparation.

Bean Adapt Technology :

We suggest accessing Bean Adapt Technology from the homepage, so that this parameter can be set as appropriate for the particular coffee bean used.


9.14 Water hardness

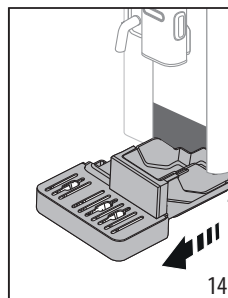
To change the water hardness, proceed as follows:

1. Test the water hardness proceeding as describer on “6. Setting up the appliance” “Test water hardness”.
2. Enter the setting menu by pressing  (C5).
3. Scroll through the pages until “Water hardness”. Press “Set”.
4. Select the level corresponding to the test.
5. Press “<” to go back to the settings menu.
6. Press “X” to go back to the homepage (C).

9.15 Empty circuit

To avoid the water in the circuit freezing if the appliance is to be left idle for a long period of time, or before taking it to customer services, we recommend emptying the water circuit. Proceed as follows:

1. Enter the setting menu by pressing  (C5);
2. Scroll through the pages until “Empty circuit” is displayed;
3. Press “Ok” to start the guided procedure;
4. Extract, empty and replace the grounds container (A8) and drip tray (A12) (fig. 14), then press “Next”;



5. Position a 0,2 l container under the spouts (fig. 10). Press “Next”;


6. The appliance performs a rinse cycle with hot water from the coffee spouts (A13);
7. At the end of rinsing, extract the water tank (A7) (fig. 2) and empty;
8. If present, remove the water softener filter (D4) from the water tank and press "Next";
9. Put the empty water tank back in the appliance and press "Yes";
10. Confirm you are ready to start and press "Yes".
11. Wait for the appliance to empty the circuit; (Important: hot water from the spouts!). As the water circuit empties, the appliance could become noisier. This is part of normal operation.
12. When the circuit is empty, extract and empty the drip tray, put it back in the appliance and press "Next";
13. Press "Ok". The appliance goes off (standby).
14. Unplug the appliance.

The next time the appliance is turned on, follow the instructions in section "6. Setting up the appliance".

9.16 Default values

This resets all menu settings and user customisation back to the default values (with the exception of the language, which remains as set, and the statistics).

Proceed as follows:

1. Enter the setting menu by pressing  (C5);
2. Scroll through the pages until "Default values" is displayed;
3. Press "Read more";
4. Select whether you want to reset the entire machine or a single profile, then press "Next";
5. Follow the instructions, then confirm the reset by pressing "Ok".
6. Press "X" to go back to the homepage (C).

Please note:

Whenever the machine (not the individual profile) is reset to the factory default values, the system will suggest running the first time start-up operations from "Profiles".

10. DRINK SELECTION

You can use your machine to make a great variety of drinks.

| | Hot | Cold |
|----------------|-----|------|
| Espresso | ✓ | ✓ |
| 2X Espresso | ✓ | ✗ |
| Espresso Lungo | ✓ | ✗ |
| Coffee | ✓ | ✓ |
| → | | |

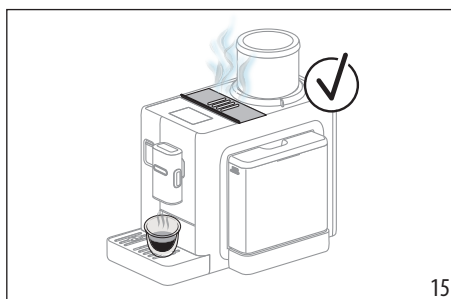
| | Hot | Cold |
|--------------------|-----|------|
| Long | ✓ | ✗ |
| Americano | ✓ | ✓ |
| Cappuccino | ✓ | ✗ |
| Latte Macchiato | ✓ | ✗ |
| Caffelatte | ✓ | ✗ |
| Cappuccino Mix | ✓ | ✗ |
| Espresso Macchiato | ✓ | ✗ |
| Flat White | ✓ | ✗ |
| Cortado | ✓ | ✗ |
| Milk | ✓ | ✗ |
| Hot water | ✓ | ✗ |

From the panel, access the type of drink you want to make (Coffee or Milk) and fit the necessary accessories.

11. MAKING COFFEE DRINKS

Please note:

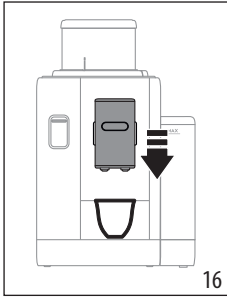
Steam will come out after each drink (fig. 15). This is part of normal use.



11.1 Prepare the machine to make coffee drinks **Important!**

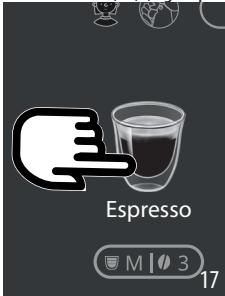
Do not use green, caramelised or candied coffee beans as they could stick to the coffee grinder and make it unusable.

1. Place 1 or 2 cups under the coffee spouts (A13);
2. Lower the spouts as near as possible to the cup (fig. 16). This makes a creamier coffee.



11.2 Directly selected drinks

1. Press the image on the homepage (C) corresponding to the coffee you want to make (C7) (e.g. eEspresso, fig. 17);



2. **Hot coffee drink:** the appliance starts preparation.

Cold coffee drinks:

- Select to make an "Ice" or "Extra Ice" drink: press "Next";
- Depending on the previous selection, before delivery, the appliance suggests the quantity of ice cubes. Add the quantity of ice cubes indicated to the glass (fig. 18), then press "Brew".



- The appliance starts preparation.

A description of each individual phase (grinding, brewing coffee) appears on the display.

At the end of preparation, the appliance is ready to make the next drink.

11.3 Customising the drinks

To make coffee drinks with customised parameters, proceed as follows:

1. Press the customisation bar (C6) at the bottom of the image corresponding to the coffee you want to make (e.g. espresso, fig. 19). The parameters that can be customised according to taste appear on the display:



| | |
|-----------|--|
| Size | |
| Intensity | |

2. **Hot coffee drink:** After setting the parameters, press "Brew". The appliance starts making the drink and a description of each individual phase (grinding, brewing coffee) appears on the display;

Cold coffee drinks: Set the size, then press "Start" and proceed as follows:

- Select whether to make an "Ice" or "Extra Ice" drink, then press "Next";
 - Depending on the previous selection, before delivery, the appliance suggests the quantity of ice cubes. Add the quantity of ice cubes indicated to the glass (fig. 16), then press "Brew".
 - The appliance starts making the drink and a description of each individual phase (grinding, brewing coffee) appears on the display.
3. At the end of delivery, press "Save" to save the new settings, or "Cancel" to retain the previous parameters. You can also save for the moment of the Coffee Routine.

Please note:

If saved, the new settings will be stored ONLY in the selected profile.

The appliance is ready to be used again.


11.4 Making coffee using pre-ground coffee

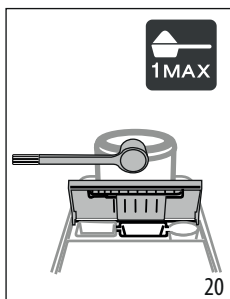
Important!

- Never add pre-ground coffee when the machine is off or it could spread through the inside of the machine and dirty it. This could damage the machine.

- Never use more than 1 level scoop (D2) as it could soil the inside of the coffee machine or block the funnel (A16).

When using pre-ground coffee, only one cup can be made at a time.

- Making **Long** coffee: halfway through preparation, when requested by the appliance, add one level measure of pre-ground coffee and press "Ok".
 - You cannot make **2x Espresso** drinks using pre-ground coffee.
1. Press the customising settings (C6) at the bottom of the image corresponding to the drink you want to make (e.g. espresso, fig. 19).
 2. Select "Pre-ground" ;
 3. Choose the size and press "Brew".
 4. Lift the pre-ground coffee funnel lid (A17), make sure the funnel (A16) is not blocked, then add one level scoop (D2) of pre-ground coffee (fig. 20). Press "Ok" to make the drink;



5. The appliance starts making the drink and a description of each individual phase appears on the display.

At the end of preparation, the appliance is ready to make the next drink.


11.5 Extra shot

Give a boost to the following drinks by adding an extra shot of espresso:

| | Hot |
|--------------------|-----|
| Espresso | ✓ |
| Espresso Lungo | ✓ |
| Espresso Macchiato | ✓ |
| Long | ✓ |
| Coffee | ✓ |
| Americano | ✓ |
| → | |

| | Hot |
|-----------------|-----|
| Cappuccino | ✓ |
| Latte Macchiato | ✓ |
| Caffelatte | ✓ |
| Cappuccino Mix | ✓ |
| Cortado | ✓ |
| Flat White | ✓ |

Proceed as follows:

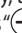


1. Press the customisation bar (C6) at the bottom of the image corresponding to the drink you want to make (e.g. espresso, fig. 19). The parameters that can be customised according to preference appear on the display:
2. Press "Extra Shot", then "Ok".
3. Select the desired size and intensity. Press "Brew".
4. Confirm by pressing "Ok".
5. The appliance starts making the drink and a description of each individual phase appears on the display.
6. At the end of delivery, press "Save" to save the new settings, or "Cancel" to retain the previous parameters. You can also save it for the moment in the Coffee Routine. In this instance, the Extra Shot is indicated by the  symbol in the customisation bar of the drink.

Please note:

If saved, the new settings will be stored **ONLY** in the selected profile.



The appliance is ready to be used again.

11.6 General indications for making coffee drinks

- While the machine is making the coffee, preparation can be interrupted at any moment by pressing "Stop" or "Cancel".
- At the end of delivery, to increase the quantity of coffee in the cup, simply press  Extra". When the required quantity has been reached, press  "Stop" or "Cancel".
- Various alarm messages could be displayed while using the appliance ("Please fill the tank with fresh water up to MAX level" etc.). Their meaning is explained in section "22. Displayed messages".
- If the coffee is delivered a drop at a time, too weak and not creamy enough, or too cold, consult the "9.13 Grinder setting" tutorial included in the setting menu  (C5) and section "23. Troubleshooting".
- If "Energy Saving" mode is activated, there may be a few seconds delay before the first coffee is delivered.

11.7 Tips for a hotter coffee




To make a hotter coffee, proceed as follows:

- perform a hot rinse cycle before making hot drinks (see “9.1 Rinsing” in the menu  (C5));
- warm the cups with hot water using the hot water function (select the relative picture and follow the instructions on the display);
- increase the coffee temperature (“9.9 Coffee temperature” in the menu  (C5)).

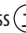


12. BEAN ADAPT TECHNOLOGY

A coffee expert at your fingertips to help you optimise coffee brewing and the result in your cup in just a few steps.

The smart technology guides you to adjust the machine according to the coffee beans used - from grinding coarseness to brewing, each phase will be regulated to get the best results from the coffee bean.

1. On the homepage, press  (C3).
2. Enable Bean Adapt switching it on on the display.
3. The machine shows a reminder that before any adjustment of the coffee grinder, at least 3 coffees need to be made. Press “Ok”.
4. Select the variety of coffee bean being used: 100% Arabica or a blend of Arabica and Robusta (this information will be found on the pack containing the beans). Press  for additional information. Press “Next”.
5. Select the type of roast, tapping the colour depth description that appears closest to the colour of the beans. Press  for additional information. Press “Next”.

The machine will now check how the settings can be adjusted to give the best possible outcome, based on the information it has:

6. Check the current setting of the coffee grinder and select it from the drop-down menu. Press  for additional information. Press “Next”.
7. Press “Deliver” to prepare an Espresso. Following delivery, press “Next”.
8. The machine will ask how the coffee tasted and, according to the answer it gets, recommend the optimum parameters: press “Next” on each page to bring up the next parameter:
 - Coffee temperature;
 - Intensity;
 - Coffee grinder setting (turn the indicator ring (A2) only when the beans are actually being ground).
9. Tap  on the name of the beans and the keyboard pops up to allow changes. To confirm the current name, press “Ok”.
10. Press “Save”: the machine stores the settings and the name of the bean appears in place of the  logo.

Please note

- Bean Adapt Technology is applicable only to Espresso coffee.

- Up to 6 different bean profiles can be stored. All the stored profiles are accessed by pressing the name on the homepage.

13. COFFEE ROUTINE

If you enable the coffee routine, your machine will remember the settings you decide for each moment during the day.

1. On the homepage, press the symbol corresponding to the current coffee routine (C2).
2. Enable the function activating the switch on the display and press “Yes” to confirm.
3. A symbol appears on the homepage, which will differ according to the time of day

In this way the machine is able to offer the preferences saved from previous preparations: your favourite coffee, just how you like it.

Please note:

To disable this function, go to the homepage and press the symbol indicating the current coffee routine, then switch the coffee routine off. In this instance:

- confirm that the function is to be disabled by pressing “Yes”;
- the machine prompts for an existing routine to be selected and confirmed with “Ok”.

This symbol  now appears on the homepage, replacing the symbol of the coffee routine currently selected.

14. MAKING MILK DRINKS

14.1 Preparing the milk carafes (E)

Please note:

To avoid milk with poor froth or large bubbles, always clean the milk carafes as described in sections “14.6 Cleaning the milk carafe after every use” and “19.11 Complete cleaning of the milk carafes (E)”.

14.2 Which milk to use?

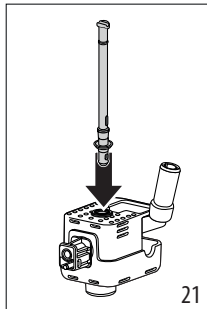
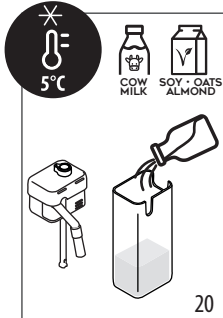
The quality of the froth will vary depending on:

- the temperature of the milk or plant-based drink (for best results, always use milk or plant-based drinks at refrigerator temperature (5°C));
- type of milk or plant-based drink;
- brand used;
- ingredients and nutritional value.

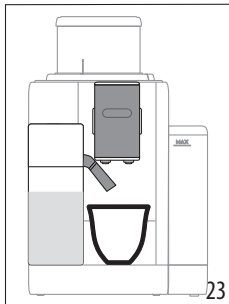
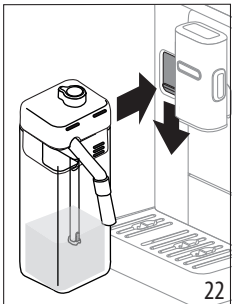
| Cow's milk | |
|---|---|
| Whole (fat content >3.5%) | ✓ |
| Partially skimmed (fat content between 1.5 and 1.8%) | |
| Skimmed (fat content < 0.5%) | |
| Plant-based drinks | |
| Soy | ✓ |
| Almond | ✓ |
| Oat | ✓ |

14.3 Filling and attaching the milk carafe

1. Lift the lid (E2) and fill the milk container (E5) with a sufficient quantity of milk, not exceeding the MAX level marked on the carafe (fig. 21);
2. Make sure the milk intake tube (E6) is correctly inserted on the bottom of the milk carafe lid (fig. 22);



3. Put the lid back on the milk container;
4. Slide down the lid and attach the carafe to the connector (A14), pushing as far as it will go (fig. 23). The machine emits a beep (if the function is enabled);



5. Place a sufficiently large cup under the coffee spouts (A13) and milk spout (E3) (fig. 24). The milk spout of the "Hot"

lattecrema can be lengthened by adjusting the extension (E4);

Please note:

If "Energy Saving" mode is enabled, you may have to wait a few seconds before the appliance makes the drink.

14.4 Adjusting the froth

Turn the froth adjustment dial (E1) to adjust the froth delivered while making milk drinks.

| Dial position | Recommended for... |
|---------------|--|
| | LatteCrema HOT |
| Delicate | • Caffe latte |
| Creamy | • Latte Macchiato • Flat White • Cortado |
| Dense | • Cappuccino • Cappuccino Mix • Espresso Macchiato • Hot milk (frothed) |

14.5 Making milk drinks

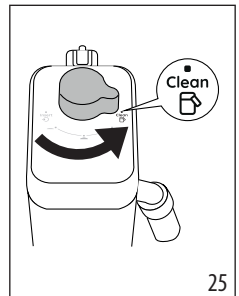
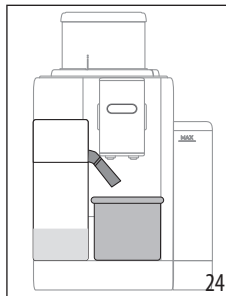
On the homepage (C), press the image corresponding to the drink you want to make (C7).

As for coffee drinks, you can make a customised drink by pressing the drink customising symbol (C6) at the bottom of the image on the homepage.

14.6 Cleaning the milk carafe after every use

Each time you deliver a milk drink, the appliance asks you to perform the CLEAN function to clean the milk carafe lid (E2). To start cleaning, proceed as follows:

1. Leave the milk carafe in the machine (you do not need to empty it);
2. Place a cup or other recipient under the milk spout (E3) (fig. 25);



- Turn the froth adjustment/clean dial (E1) to "Clean" (fig. 26). Hot water and steam are delivered from the milk spout. Cleaning stops automatically;
- Turn the dial back to one of the froth selections;


Where several drinks are prepared in succession:

- To proceed with making the next drinks, when the "Clean" message is displayed, press "Cancel". Clean the milk carafe after making the last drink.

At the end of preparation, the milk carafe is empty, or there is not enough milk for other drinks

- After cleaning using the "Clean" function, extract the milk carafe and clean all the components as described in section "19.11 Complete cleaning of the milk carafes (E)"


At the end of preparation, there is enough milk left in the carafe for other drinks

- After cleaning using the "Clean" function, extract the milk carafe and place it immediately in the refrigerator. The "HOT" carafe  can be kept in the refrigerator for no more than 2 days; then all the components should be cleaned as described in section "19.11 Complete cleaning of the milk carafes (E)".

Important:

If the milk carafe has been left out of the refrigerator for more than **30 minutes**, disassemble and clean all the components as described in section "19.11 Complete cleaning of the milk carafes (E)".

General notes after making milk drinks:

- If you do not clean the milk carafe, the  symbol appears on the homepage to remind you that it needs cleaning.
- In certain cases, the appliance will need to warm up before the carafe can be cleaned.
- To ensure correct cleaning, wait for the Clean function to end. The function stops automatically. It must not be interrupted while underway.

15. PREPARING HOT WATER

- Insert the hot water spout (D5) in the machine (fig. 5);
- Place a cup under the hot water spout;
- On the homepage (C):
 - directly press the image corresponding to hot water (C7): delivery starts.
 - choose the quantity by pressing the customising symbol (C6) at the base of the image, then press "Brew". Delivery starts.
- Preparation begins and stops automatically.


Please note:

- To stop brewing, press "Stop" or "Cancel".
- As soon as delivery has ended, to increase the quantity of water, just press "Extra". When the required quantity is reached, press "Stop" or "Cancel".

16. MAKING "TO GO" DRINKS

Use your personal mug and create your drink to go.




Visit delonghi.com to find out the recommended mug:

| | |
|---|--|
|  | Travel mug (sold separately) (capacity 236 ml/ 130mm) |
| | Type: DLSC074 |
| | EAN:8004399024465 |

You can use your machine to make a great variety of "To go" drinks.

| | Hot | Cold |
|-----------------|-----|------|
| Coffee | ✗ | ✓ |
| Americano | ✓ | ✓ |
| Cappuccino | ✓ | ✗ |
| Latte Macchiato | ✓ | ✗ |
| Caffelatte | ✓ | ✗ |
| Cappuccino Mix | ✓ | ✗ |
| Flat White | ✓ | ✗ |
| Milk | ✓ | ✗ |

Proceed as follows:

- Press the customisation bar (C6) at the bottom of the image corresponding to the coffee you want to make. The display shows the parameters that are customizable according to preference, and the functions that can be selected:
- Press  : you entered the "to go" function.
- Press "Next", then "Ok".
- Pressing  displays information on the quantities corresponding to the size of the travel mug;
- Press  to select the size of your drink: press "Save".
- The new "to go" size is saved and next time will be automatically set. Press "X".
- Press "Brew": the machine proceed preparing the drink as usual.

Please note:

- Each time you use a mug different from the one used previously, we recommend you remain nearby to check the quantity of drink delivered.
- If you save the new settings, they are memorised ONLY in the selected profile.
- To maintain the temperature of hot drinks, preheat the travel mug with hot water.

- It is advisable to use the travel mug only for the drinks indicated on the homepage.
- When choosing the travel mug to use, make sure it is no taller than 14 cm.

Important

- Before screwing on the lid, open the closing cap to release the pressure;
- At the end of preparation of milk drinks, clean the milk carafe (E) as illustrated on paragraph “14.6 Cleaning the milk carafe after every use”.
- You should use the contents within a maximum of 2 hours. After that time, empty and clean as described in the following section.
- For more information, see the leaflet attached to the travel mug.

16.1 Cleaning the De’Longhi travel mug after use (sold separately)

For hygiene reasons, the travel mug should always be cleaned after use. Do not use abrasive materials that could damage the surface of the container.

Proceed as follows:

1. Unscrew the lid and rinse the container and lid with hot drinking water (40°C).
2. Soak the components in hot water (40°C) with washing up liquid for at least 30 minutes. Do not use scented detergents.
3. Clean the inside of the container and the lid with a clean sponge and washing up liquid, removing any visible dirt.
4. Rinse all components with hot drinking water (40°C).
5. Dry all components with a clean, dry cloth or paper towels, then reassemble.
6. Wash the lid in the dishwasher once a week. The metal container is not dishwasher safe

17. CHANGING BEAN HOPPER



Switch the bean hopper (D6) to enjoy a different coffee blend.

Proceed as follows:

1. Rotate the bean hopper in “unlock” ☐ position (fig. 12) and leave it in this position until the procedure is finished;
2. The display shows the “Switch mode” procedures: select one option and follow the steps:

Choose a drink (Use the remaining beans to make a drink of your choice):

3. Select “Choose a drink”

4. Press “Start”: the homepage displays the drinks you can choose from (the intensity is already set and cannot be changed).
5. Press “Ok” and prepare the drink as usual (Tick the box; the message will not be displayed again).

Grind & Empty (Run a grinding cycle to remove the remaining beans):

3. Select “Grind & Empty”: the machine grinds the remaining beans;
4. Press “Start” and wait until the machine automatically stops;

Now you can switch the bean hopper

6. Remove the bean hopper;
7. Insert the new bean hopper in its housing and rotate it clockwise to lock it. For correct operation, align the unlock ☐ symbol to the mark on the ring (fig. 8) and, once inserted, rotate it to the lock ☐ position (fig. 9).

Please note:

If you directly change the bean hopper without emptying the grinder, the coffee brewed will be with a mix between the old and new blends.

Attention:

- It is normal to find coffee powder on the bean hopper’s housing on the machine.
- If it is difficult to insert the new hopper, make sure there is no coffee beans on the hopper housing on the machine. In this case, clean the hopper’s housing on the machine with the cleaning brush (D2) and a soft, damp cloth. To remove the coffee powder, use a hand vacuum cleaner.




18. “MY” FUNCTION (“HOT” DRINKS ONLY)

With the “my function”, you can customise the drink as follows:

1. Make sure the profile (B4) whose drink you want to customise is active;
2. Press drink customising bar (C6) at the bottom of the image corresponding to the drink you want to make (fig. 17);
3. Press (my) ;
4. Press “Start”;
5. When preparing coffee based drinks, select the intensity or the “Bean Adapt” function: press “Next”;
6. Make sure that a cup of the right size is placed under the coffee spout, and press “Brew”;
7. As the drink is delivered, a progress bar will fill up gradually. Once the minimum programmable quantity is reached, the “Stop” button will be enabled. The ☑ symbol indicates the previous quantity.
8. When the quantity in the cup is as desired, press “Stop”;
9. Press “Save” to store the new parameters for the drink under the selected profile: if “Coffee Routine” is enabled,

the machine will suggest the option of saving the drink for that particular time of the day.

Please note:

- If you save the new settings, they are memorised ONLY in the selected profile.
- When you customise a single drink, the respective double version is also customised.
- Press “X” to exit programming at any moment. The values will not be saved.
- To disable the function and prepare the drink using other parameters, press the customization bar relative to the drink: press  on the page to disable the function () and revert to the factory default values.
- To reprogramme the My drink, the parameters must be reset to the factory default values: press the customisation bar of the drink and check that the function is enabled (). Press “Reset” to restore the factory default values for the drink. The drink can now be reprogrammed.

| Drink quantity table | | |
|----------------------|-------------------|-----------------------|
| Drink | Standard quantity | Programmable quantity |
| Espresso | 40 ml | 20-180 ml |
| 2X Espresso | 40 ml + 40 ml | 20-180 ml + 20-180 ml |
| Espresso Lungo | 120 ml | 60-180 ml |
| Coffee | 180 ml | 100-270 ml |
| Long | 160 ml | 115-250 ml |
| Americano | 150 ml | 70-480 ml |
| Hot water | 250 ml | 20-420 ml |

19. CLEANING



19.1 Cleaning the machine

The following parts of the machine must be cleaned regularly:

- the appliance’s internal circuit;
- bean hopper (A1);
- coffee grounds container (A8);
- drip tray (A12) and drip tray grille (A11);
- inside of the machine;
- water tank (A7);
- coffee spouts(A13);
- pre-ground coffee funnel (A16);
- brewing unit (A3), extractable after opening the brewing unit flap door (A4);
- milk carafe (E) .

Important!

- Do not use solvents, abrasive detergents or alcohol to clean the coffee machine. With De’Longhi superautomatic coffee machines, no chemical products are required for cleaning purposes.
- Do not use metal objects to remove encrustations or coffee deposits as they could scratch metal or plastic surfaces.

| dishwasher safe  | hand wash only  |
|---|--|
| drip tray (A12) | bean hopper (A1) |
| coffee grounds container (A8) | coffee grounds container support (A9) |
| tray grille (A11) | water tank (A7) |
| “Hot” milk carafe (E) | removable brewing unit (A3) |
| | pre-ground coffee funnel (A16) |

19.2 Cleaning the internal circuit


If the appliance is not used for more than 3 days, before using it again, we strongly recommend empty and fill the water tank with fresh potable water, switch it on and perform 2/3 rinse cycles by selecting the “Rinsing” function (“9.1 Rinsing”).

Please note:

After cleaning, it is normal for the grounds container (A8) to contain water.

19.3 Cleaning the bean hoppers

Periodically clean the bean hopper (A1). Proceed as follows:

1. Rotate counterclockwise the bean hopper to the “unlock”  position (fig. 12) and leave it in this position until the procedure finishes: you enter the “Switch mode”.
2. Select one option (“Choose a drink (Use the remaining beans to make a drink of your choice):” or “Grind & Empty (Run a grinding cycle to remove the remaining beans):”) and follow the dedicated steps.
3. Then remove the bean hopper.
4. Remove the bean hopper lid. If the bean hopper is not empty, store the coffee beans in a container.
5. Wipe the inside and the outside of the hopper clean with a soft moist cloth, removing all residual traces of coffee.
6. Clean the bean hopper socket on the machine, using the brush and a soft clean cloth. Remove powdery coffee residues with a vacuum cleaner.
7. Dry the bean hopper and the lid thoroughly, using a clean dry cloth or absorbent paper: make certain all the surfaces are completely dry.

- Fill the hopper with coffee beans, close it with its lid. Insert the bean hopper in its housing and rotate it clockwise to lock it. For correct operation, align the “unlock” symbol to the mark on the ring (fig. 8) and, once inserted, rotate it to the “lock” position (fig. 9)

19.4 Cleaning the coffee grounds container

When the machine requires it, the grounds container must be emptied and cleaned. The appliance cannot be used to make coffee until you have cleaned the grounds container (A8). Even if not full, the empty grounds container message is displayed 72 hours after the first coffee has been prepared. For the 72 hours to be calculated correctly, the machine must never be disconnected from the mains power supply.

Important! Danger of scalding

If you make a number of milk-based drinks one after the other, the metal cup tray (A10) becomes hot. Wait for it to cool down before touching it

To clean (with the machine on):

- Remove the drip tray (A12) and grounds container (A8) (fig. 14).
- Empty the drip tray and grounds container and clean thoroughly to remove all residues left on the bottom.
- Put the drip tray complete with grille (A11) and grounds container back in the appliance.

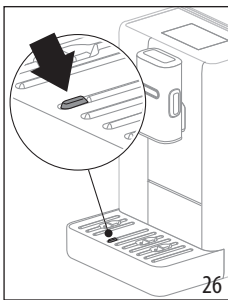
Important!

When removing the drip tray, the grounds container must be emptied, even if it contains only a few grounds. If this is not done, when you make the next coffees, the grounds container will fill up more than expected and clog the machine.

19.5 Cleaning the drip tray and drip tray grille

Important!

The drip tray (A12) is fitted with a level indicator (red) showing the amount of water it contains (fig. 27).



Before the indicator protrudes from the cup tray (A10), the drip tray must be emptied and cleaned, otherwise the water may overflow the edge and damage the appliance, the surface it rests on or the surrounding area. To remove the drip tray, proceed as follows:

- Remove the drip tray with all the components;
- Remove and empty the drip tray and coffee grounds container (A8);
- Remove the cup tray (A10) and drip tray grille (A11) and wash all components;
- Put the drip tray complete with all the components.

Important!

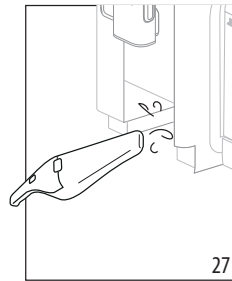
When removing the drip tray, the grounds container must be emptied, even if it contains few grounds. If this is not done, when you make the next coffees, the grounds container will fill up more than expected and clog the machine.

19.6 Cleaning the inside of the machine

Danger of electric shock!

Before cleaning internal parts, the machine must be turned off (see section “7. Turning the appliance on”) and unplugged from the mains power supply. Never immerse the machine in water.

- Check regularly (about once a month) that the inside of the appliance (accessible after removing the drip tray (A12)) is not dirty.
- Remove all residues with a hand vacuum cleaner (fig. 28).



19.7 Cleaning the water tank

Clean the water tank (A7) periodically (about once a month) and whenever you replace the water softener filter (D4).

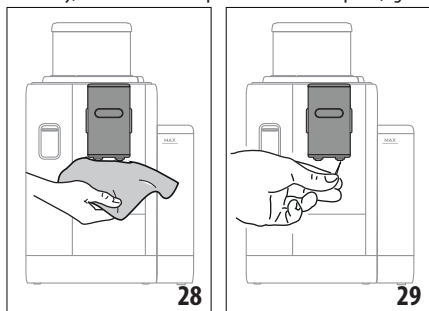
- Extract the water tank, remove the water softener filter (if present) and rinse with drinking water;
- Empty the water tank and clean with warm water (40 °C approx), wiping if necessary with a clean, non-abrasive cloth. Rinse thoroughly under running water;
- Put the filter back in the appliance, if removed previously, fill the tank with fresh drinking water up to the MAX level and put the tank back;
- (models with water softener filter only) Deliver 100ml of hot water to reactivate the filter.

Please note:

If the appliance is not used for more than 3 days, you should clean the tank as described above.

19.8 Cleaning the coffee spouts

1. Clean the coffee spouts (A13) regularly with a sponge or cloth (fig. 28);
2. Check the holes in the coffee spouts are not blocked. If necessary, remove coffee deposits with a toothpick (fig. 29).



19.9 Cleaning the pre-ground coffee funnel

Clean the pre-ground coffee funnel (A16) regularly (about once a month) with a damp cloth. Proceed as follows:

1. Turn the machine off (see chapter "8. Turning the appliance off");
2. Open the accessories storage lid (A17);
3. Remove the coffee scoop/cleaning brush (D2);
4. Extract the removable funnel.
5. Clean the funnel with the brush provided;
6. Reinsert the funnel in its housing;
7. Close the lid.

Important!

After cleaning, make sure there are no accessories left in the funnel. The presence of foreign objects in the funnel while the machine is in operation could damage the appliance.

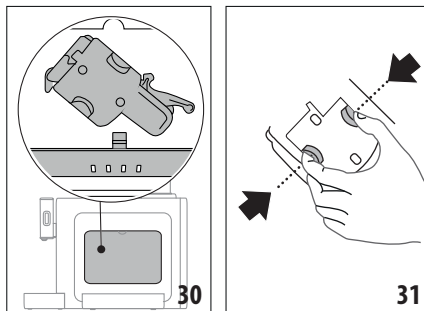
19.10 Cleaning the brewing unit

The brewing unit (A3) must be cleaned at least once a month.

Important!

The brewing unit cannot be extracted while the machine is on.

1. Make sure the machine is correctly turned off (see section "8. Turning the appliance off");
2. Remove the water tank (A7);
3. Open the brewing unit door (A4) (fig. 30) on the right side of the appliance;



4. Press the two coloured release buttons inwards and at the same time pull the brewing unit outwards (fig. 31);
5. Soak the brewing unit in water for about 5 minutes, then rinse under the tap;

Important!

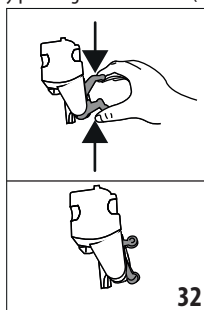
RINSE WITH WATER ONLY

NO DETERGENTS - NO DISHWASHER

6. Do not use detergents when cleaning the brewing unit, as they could damage it.
7. Use the cleaning brush (D2) to remove any coffee residues left in the brewing unit housing, visible through the brewing unit flap;
8. After cleaning, replace the brewing unit by sliding it onto the internal support, then push the PUSH symbol fully in until it clicks into place;

Please note:

If the brewing unit is difficult to insert, before insertion, adapt it to the right size by pressing the two levers (fig. 32).



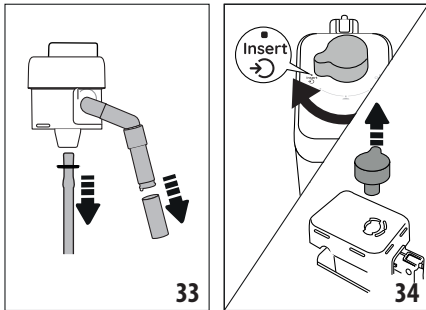
9. Once inserted, make sure the two coloured buttons have snapped out;
10. Close the brewing unit door;
11. Put the water tank back.

19.11 Complete cleaning of the milk carafes (E)

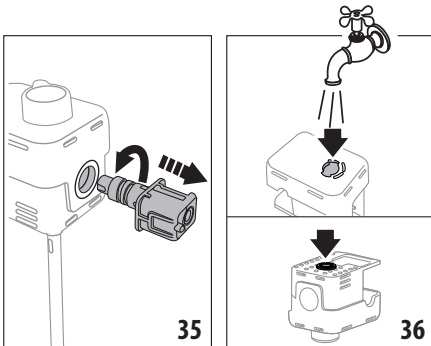
Each week the appliance reminds you to clean the milk carafes thoroughly and proposes the correct cleaning sequence: this cleaning will grant optimal results through the time.

Proceed as follows:

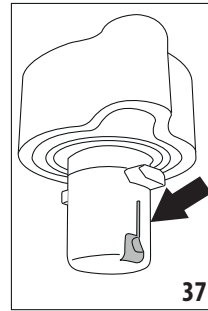
1. Extract the milk carafe lid (E2);



2. Extract the milk spout (E3), milk spout extension (E4) ("Hot" carafe only) and milk intake tube (E6) (fig. 33);
3. Turn the froth adjustment dial (E1) clockwise over the "Insert" position (fig. 34) and pull to extract;
4. Turn counterclockwise and remove the milk carafe connector (E7) (fig. 35).



5. Wash in a dishwasher (recommended) or by hand as indicated below:
 - **In a dishwasher:** Rinse all the above components and the milk carafe with hot running drinking water (at least 40°C), then place them in the top basket of the dishwasher and run a programme at 50°C, e.g. standard ECO.
 - **By hand:** Thoroughly rinse all the components and the milk carafe with hot running drinking water (at least 40°C) to remove all visible milk residues; make sure to run the water through the holes in the lid (fig. 36). Then immerse all the components in hot drinking water (at least 40°C) and washing up liquid for at least 30 minutes. Rinse all the above components thoroughly under hot drinking water, rubbing them one at a time with your hands.
6. Make sure there are no milk residues on the hollow and groove under the dial (fig. 37). If necessary, scrape the groove with a toothpick;



7. Check that the intake tube and spout are not clogged with milk residues;
8. Dry all the components with a clean dry cloth;
9. Reassemble all the lid components;
10. Attach the lid back on the milk carafe.

Please note:

Each week the appliance reminds you to clean the milk carafe thoroughly and proposes the correct cleaning sequence again.


20. DESCALING

Important!

- Before use, read the instructions and labelling on the descaler pack.
- Use De'Longhi descaler only. Using unsuitable descaler and/or performing descaling incorrectly may result in faults not covered by the manufacturer's guarantee.
- Descaler could damage delicate surfaces. If the product is accidentally spilt, dry immediately.

| To descale | |
|------------|-----------------------------|
| Descaler | De'Longhi descaler |
| Container | Recommended capacity: 1,5 l |
| Time | ~30min |

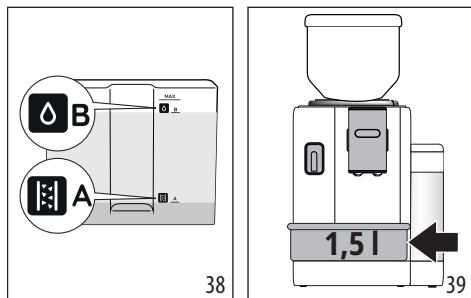
Descalce the appliance when the corresponding message appears on the homepage. To descale immediately, press "Ok" and follow the step by step instructions on the display.

To descalce the appliance later, press "Cancel". The  symbol (C4) appears on the homepage to remind you the appliance needs descaling. (The message appears each time you turn the appliance on).

To access the descaling menu:

1. Press the settings menu icon (C5) on the homepage;
2. Scroll through the menu items until "Descaling" is displayed;
3. Press "Start" to enter the guided descaling procedure;
4. Press "Yes" to begin;
5. Insert the water spout (D5) (fig. 5) (it is stored in the accessories compartment on top of the machine);

6. Remove and empty the drip tray (A12) and coffee grounds container (A8) (fig. 14), then put both back in the appliance and press "Next";
7. Remove the water tank (A7), lift the lid (A6) and (if inserted) remove the filter (D4). Empty the tank completely.
8. Pour the descaler into the tank up to the level A marked inside the tank (equal to one 100ml pack), then add water (one litre) up to level B (fig. 38). Put the water tank (with lid) back in the appliance and press "Start";



9. Place an empty 1,5 l container under the spouts (fig. 39). Press "Done": desing starts ("Back" to go back to the previous screen or "X" to exit the procedure, remembering to remove the descaling solution from the tank)

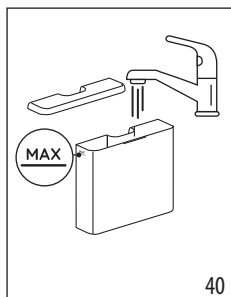
Important! Danger of scalding

Hot water containing acid flows out of the spouts. Take care to avoid contact with splashes of this solution.

10. The descale programme starts and the descaler liquid comes out of the hot water and coffee spouts. A series of rinses is performed automatically to remove all the scale residues inside the coffee machine;

After about 20 minutes, the descaling action ceases;

11. The appliance is now ready to be rinsed through with clean water. Empty the container used to collect the descaler solution. Remove the water tank, empty, rinse under running water, fill with fresh potable water up to the MAX level and put back in the appliance (fig. 40). Press "Next";



12. Place the container used to collect the descaler solution empty under the spouts and press "Yes" to start rinsing;
13. Hot water is delivered from both the hot water spout and coffee spouts;
14. When the water in the tank has run out, empty the container used to collect the rinsing water;
15. Extract the water tank and put back the water softener filter if removed previously.
16. Fill the tank with fresh water up to the MAX level, put back in the appliance and press "Next" to continue.
17. Place the container used to collect the descaler solution empty under the spouts and press "Next" to start another rinsing cycle;
18. When the water in the tank has run out, empty the container used to collect the rinsing water, remove and empty the drip tray (A12) and grounds container (A8), then put back in the appliance. Press "Next".
19. The descaling process is now complete". Press "OK".
20. Extract the water tank, top up to the max level and put it back in the machine
21. The appliance performs a rapid preheat cycle and then goes back to the homepage.

Please note:

- If the descaling cycle is not completed correctly (e.g. electrical power failure) the appliance will request to complete it next time you switch it on;
- After descaling, it is normal for the grounds container (A8) to contain water.
- If the water tank has not been filled to the MAX level after descaling, the appliance prompts for a third rinse to ensure that the descaler solution has been completely eliminated from the machine's internal circuits. Before starting rinsing, remember to empty the drip tray.

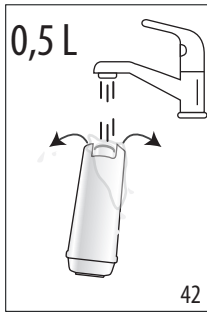
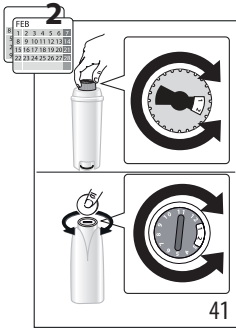
21. WATER SOFTENER FILTER

Certain models are fitted with a water softener filter (D4). If this is not the case with your model, you are recommended to purchase one from De'Longhi Customer Services.

To use the filter correctly, follow the instructions below.

21.1 Installing the filter

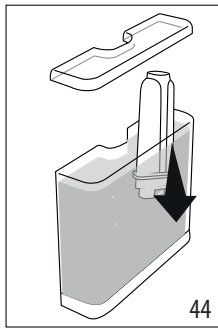
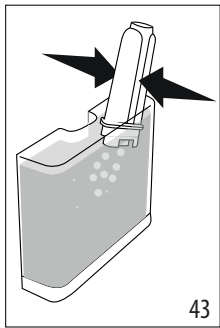
1. Press the settings menu (C5);
2. Scroll through the pages and select "Water filter";
3. Press "Yes" to enter the guided procedure
4. Remove the filter from the packaging and turn the date indicator to view the next 2 months (fig. 41);



Please note:

The filter lasts about two months if the appliance is used normally. If the machine is left unused with the filter installed, it will last a maximum of 3 weeks.

5. Press "Next" to continue ("Back" to go back to the previous screen; "X" to cancel the operation);
6. To activate the filter, run potable water through the hole in the centre of the filter until water comes out of the openings at the side for more than a minute (fig. 42). Press "Next";
7. Extract the water tank (A7) (fig. 2) and fill with potable water; insert the filter in the water tank and immerse the bottom pressing the center of the filter 2 or 3 times to enable the air bubbles to escape (fig. 43). Press "Next";



8. Insert the filter in the filter housing (fig. 44) and push it down firmly. Close the tank with its lid (A6) and ; press "Next";
9. Insert the hot water spout (D5). Press "Next";
10. Position an empty container with a minimum capacity of 0.5 litres under the hot water spout (fig. 6) and press "Yes" to activate the filter;
11. The appliance delivers hot water, then stops automatically. Press "OK" to go back to the homepage;
12. The filter is now active and you can use the coffee machine.

21.2 Replacing or removing the filter

Replace the filter (D4) when the replace filter message appears on the homepage (C). To replace the filter immediately, press "OK"

and follow the instructions from point 3 of the previous section. To replace the filter later, press "Cancel". The filter symbol appears on the display to remind you the filter needs replacing.

To replace, proceed as follows:


1. Press the settings menu (C5);
2. Scroll through the pages until "Water filter" is displayed, then press "Read More";
3. Press "Yes" to enter the guided procedure;
4. Extract the water tank (A7) and exhausted filter.
5. To remove the filter, press "OK" ("Back" to go back to the previous screen; "X" to cancel the operation);
6. To replace the filter, press "Next" and follow the operations described in the previous section from point (4).





Please note:

After two months (see date indicator) or when the appliance has not been used for 3 weeks, you should replace the filter even if the message has not yet been displayed.

22. DISPLAYED MESSAGES

| DISPLAYED MESSAGE | MEANING | SOLUTION |
|---|--|---|
| Time to fill the water tank with fresh water and then insert it | Insufficient water in the tank (A7). | Take out the tank, fill with potable fresh water to Max level, and reposition in the machine. |
| Please insert the water tank | The tank (A7) is not correctly in place. | Insert the tank correctly and press as far as it will go. |
| Fill the tank with fresh water. Please empty drip tray and grounds container | The amount of water in the tank is not enough to make the drink and the message to empty the grounds container will be displayed shortly. | The appliance asks for both operations to be performed so that no further intervention will be necessary and more drinks can be made one after the other without interruption. |
| Please insert the brewing unit | The brewing unit (A3) has not been replaced after cleaning. | Insert the brewing unit as described in section "19.10 Cleaning the brewing unit" |
| Please empty grounds container | The grounds container (A8) is full. | Clean as described in section "19.4 Cleaning the coffee grounds container" |
| Please insert grounds container and drip tray | The grounds container (A8) and/or drip tray (A12) is not correctly in place or is missing. | Insert the drip tray complete with grounds container and press as far as it will go. |
| Please add your preferred pre-ground coffee. - max: one scoop! | Preparation with pre-ground coffee has been selected. | Make sure the funnel (A16) is not blocked, then add one level scoop (D2) of pre-ground coffee, press "Next" on the display and follow the instructions in section "11.4 Making coffee using pre-ground coffee". |
| Fill the beans hopper and press "OK" to resume brewing | The coffee beans have run out. | Fill the beans hopper (A1) and press "OK" to resume brewing |
| Please insert the water spout | The spout (D5) is not correctly in place or is missing. | Insert the spout and push as far as it will go (fig. 5). The appliance emits a beep (if the beep function is enabled). |
| Please insert the milk carafe | The milk carafe is not inserted correctly or is missing. | Insert the milk carafe and push as far as it will go. The machine emits a beep (if the beep function is enabled). |
| Just doing a little cleaning. I'll be back in a few seconds | The appliance has detected impurities in its internal circuits. | Wait for the appliance to be ready again and reselect the required drink. Contact customer services if the problem persists. |
| The new settings have not been saved | While customising the drinks (see section "18. "My" function ("Hot" drinks only)", preparation has been deliberately interrupted by pressing "X" or an alarm has been triggered. | Press "X" to go back to the homepage (C) to view the alarm causing the interruption. Follow the instructions corresponding to the alarm displayed (see section "22. Displayed messages") |
| | | → |

| DISPLAYED MESSAGE | MEANING | SOLUTION |
|--|--|--|
| Sorry, I am unable to complete your drink. Please reduce the intensity and try again | The grinding is too fine and the coffee is delivered too slowly or not at all. | Select a milder "Intensity" (see "11.3 Customising the drinks") |
| | If the water softener filter (D4) is present, an air bubble may have been released inside the circuit, obstructing delivery. | Press "OK" and deliver a little water (see section "15. Preparing hot water") until the flow is regular. If the problem continues, remove the filter (see section "21.2 Replacing or removing the filter") |
| If the delivery is slow and your espresso tastes burned, increase the grinding level by 1 (+1) | The grinding is too fine and the coffee is delivered too slowly or not at all. | Press "OK" and adjust the coffee grinder (see "9.4 Adjust grinder"). |
| Sorry, I am unable to complete your drink. Please reduce the intensity and try again | Too much coffee has been used. | Select a milder "Intensity" (see "11.3 Customising the drinks") or reduce the quantity of pre-ground coffee (maximum 1 measure). Press "OK" to go back to the homepage or wait until the message disappears. |
| Remember to store the milk carafe in the fridge | A milk-based drink has been prepared and the milk carafe is still inserted in the appliance | Remove the carafe and place in the refrigerator. |
| The machine needs to be descaled. Press OK to start (~30min) | The machine must be descaled. | To proceed with descaling, press "OK" and follow the guided procedure, otherwise press "Cancel". In this case, the  symbol (C4) appears on the homepage (C) to remind you that descaling is needed (see section "20. Descaling"). |
| Oops, the process has been interrupted | Descaling process interrupted or not correctly completed | Press Ok to continue (see chap. "20. Descaling"). |
| It's time to replace your water filter. Ready? | The water softener filter (D4) is exhausted. | Press "OK" to replace or remove the filter, or "Cancel" to carry out the procedure later. Follow the instructions in section "21. Water softener filter". |
| Something's not right: Can you refer to the user manual? | The inside of the appliance is very dirty. | Clean the inside of the appliance thoroughly, as described in section "19. Cleaning". If the message is still displayed after cleaning, contact De'Longhi Customer Services and/or an approved Service Centre |
| Water circuit empty. Press OK to start filling process | The water circuit is empty | Press "OK" to fill the circuit. Delivery stops automatically. It is normal for there to be water in the drip tray (A12) after filling. If the problem persists, make sure the water tank (A7) is fully inserted. |
| | A new water softener filter has been inserted (D4) | Make sure you have followed the instructions for inserting the new filter (sections "21.1 Installing the filter" and "21.2 Replacing or removing the filter"). If the problem continues, remove the filter. |
| | | → |


| DISPLAYED MESSAGE | MEANING | SOLUTION |
|--|--|--|
|  | Energy saving is enabled. | To disable energy saving, proceed as described in section "9.4 General". |
|  | The machine must be descaled. | The descaling procedure described in section "20. Descaling" needs to be performed. |
|  | The filter must be replaced (D4) | Replace the filter or remove it as described in section "21. Water softener filter". |
|  | Remember to clean the milk carafe (E). | Turn the froth adjustment dial (E1) to CLEAN. |
| The coffee beans profile has changed! Remember to brew at least 3 coffees before changing the coffee beans profile | The appliance needs to brew at least 3 coffees before Bean Adapt can be adjusted | Brew at least 3 coffees with the new coffee before changing the Bean Adapt |

23. TROUBLESHOOTING

Below is a list of some of the possible malfunctions.

If the problem cannot be resolved as described, contact customer services.

| PROBLEM | POSSIBLE CAUSE | SOLUTION |
|---|--|---|
| The appliance does not come on | It is not plugged into the mains socket. | Plug into the mains socket (fig. 1) and push the ON/Standby button (B1). |
| It is difficult to insert the bean hopper | There are coffee beans in the hopper's housing on the machine | Clean the hopper's housing on the machine with the cleaning brush (D2) and a soft, damp cloth. To remove the coffee powder, use a hand vacuum cleaner. |
| The coffee is not hot. | The internal circuits of the appliance have cooled down because 2-3 minutes have elapsed since the last coffee was made. | Before making the coffee, heat the internal circuits by rinsing using the rinse function (in the setting menu). |
| | Coffee temperature setting too low. | Set a hotter coffee temperature in the settings menu (C5). |
| | The cups were not preheated. | Warm the cups by rinsing them with hot water (Please note: you can use the hot water function). |
| | The machine must be descaled | Proceed as described in section "20. Descaling". Next, check the water hardness in the setting menu and make certain the machine setting matches the local water supply hardness. |
| → | | |

| PROBLEM | POSSIBLE CAUSE | SOLUTION |
|--|---|--|
| The coffee is weak or not creamy enough. | The coffee is ground too coarsely. | Access the settings menu (C5) and follow the instructions to adjust grinding. The effect is only visible after delivering 3 coffees. |
| | The coffee is unsuitable. | Use coffee for espresso machines. |
| | Coffee not fresh. | The coffee pack has been opened for too long and has lost its taste. |
| The coffee is delivered too slowly or a drop at a time. | The coffee is ground too finely. | Access the settings menu (C5) and follow the instructions to adjust grinding. The effect is only visible after delivering 3 coffees. |
| Coffee does not come out of one or both spouts. | The coffee spouts (A13) are blocked. | Clean the coffee spouts with a sponge or toothpick. |
| The coffee delivered is watery. | The funnel (A16) is clogged. | Clean the funnel with the help of the brush (D2) as described in section "19.9 Cleaning the pre-ground coffee funnel". |
| Too little drink is delivered | Insufficient water in tank | Fill the tank to MAX level. |
| The appliance does not make coffee. | The appliance has detected impurities in its internal circuits. "Just doing a little cleaning..." is displayed. | Wait for the appliance to be ready again and reselect the required drink. Contact customer services if the problem persists. |
| The brewing unit (A3) cannot be extracted. | The appliance has not been turned off correctly | Turn the appliance off by pressing the  button (B1) (see section "8. Turning the appliance off"). |
| At the end of descaling, the appliance requests a third rinse. | During the two rinse cycles, the water tank (A13) has not been filled to the MAX level | Follow the instructions displayed by the appliance, but first empty the drip tray (A12) to avoid the water overflowing. |
| Milk does not flow from the milk spout (E3). | The milk carafe lid (E1) or is dirty | Clean the milk carafe lid as described in section "19.11 Complete cleaning of the milk carafes (E)". |
| | The lid (E1) is not assembled correctly. | Assemble all the components correctly as described in sections "14.1 Preparing the milk carafes (E)" and turn the milk froth knob to the maximum froth position. |
| → | | |

| PROBLEM | POSSIBLE CAUSE | SOLUTION |
|--|--|---|
| The milk contains large bubbles and squirts out of the milk spout (E3) there is little froth. | The milk is not cold enough or not suitable for the drink requested | For best results, make sure to use the right type of milk to prepare drinks (see section "14.2 Which milk to use?"). Use drinks at refrigerator temperature (about 5° C). |
| | The milk carafe lid (E1) is dirty | Clean the milk carafe as described in section "14.6 Cleaning the milk carafe after every use" |
| | There is water in the groove under the froth adjustment dial (E1) | Extract the dial and dry thoroughly. |
| | Plant-based drinks have been used. | For best results, use drinks at refrigerator temperature (about 5° C). Adjust the amount of froth as suggested in the display |
| The machine emits noises or small puffs of steam while not in use | The machine is ready for use, or has recently been turned off, and condensate is dripping into the hot vaporiser | This is part of normal operation. To limit the phenomenon, empty the drip tray. |
| The appliance emits puffs of steam from the drip tray (A12) and/or there is water on the surface the appliance rests on. | The drip tray grille (A11) has not been put back after cleaning. | Put the drip tray grille back in the drip tray. |
| The To Go drink is too much or has spilled out of the travel mug | An unsuitable quantity has been selected | Choose a smaller quantity |
| | | Adjust the quantity in the mug so that the next drink is prepared correctly |
| Too little To Go drink is prepared | An unsuitable quantity has been selected | Choose a larger quantity |
| | | Adjust the quantity in the mug so that the next drink is prepared correctly |

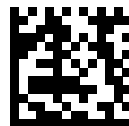
24. TECHNICAL DATA

| | |
|------------------------|-------------------|
| Voltage: | See rating label |
| Power: | See rating label |
| Pressure: | 1.9 MPa (19 bars) |
| Water tank capacity: | 1,4 L |
| Size LxDxH: | 250x430x390 mm |
| Cord length: | 1200 mm |
| Weight: | 11 kg |
| Beans hopper capacity: | 250 g |

De'Longhi reserves the right to modify the technical specification and styling of its products at any moment, without compromising their functionality and quality.

24.1 Tips for Energy Saving

- To reduce energy consumption, after delivering one or more drinks, remove the milk carafe.
- Set auto-off to 15 minutes (setting menu);
- Enable Energy Saving (setting menu);
- Always carry out the descaling cycle when prompted by the machine.



57132(9201_00_0724