




Instructions for use


EXAM44X.5Y  
FEB4455

**RIVELIA**

**DēLonghi**

<b>DESCRIPTION OF THE MACHINE .....</b>	<b>5</b>
<b>DESCRIPTION OF PANEL AND HOMEPAGE.....</b>	<b>7</b>
<b>DESCRIPTION OF ACCESSORIES * .....</b>	<b>8</b>
<b>DESCRIPTION OF MILK CARAFE .....</b>	<b>9</b>
<b>USING THE MACHINE FOR THE FIRST TIME .....</b>	<b>10</b>
Select your language.....	10
Select the day and time.....	10
Fill the water tank .....	11
Prepare the machine .....	11
Fit the bean hopper .....	11
Using for the first time.....	12
Tips.....	12
Check the hardness of the water.....	12
Setting water hardness.....	12
Profiles .....	13
Tutorial .....	13
<b>TURNING THE MACHINE ON .....</b>	<b>14</b>
<b>TURNING THE MACHINE OFF .....</b>	<b>15</b>
Switching off for extended periods.....	15
<b>MENU SETTINGS .....</b>	<b>16</b>
Rinsing .....	16
Descaling .....	16
Water filter.....	16
General.....	16
Auto-off.....	17
Support .....	17
Grind & Empty .....	17
Cleaning the milk carafe.....	18
Coffee temperature .....	18
Statistics.....	18
Languages.....	18
Day and time.....	19
Coffee grinder settings .....	19
Water hardness.....	19
Drain water .....	20
Default values .....	20
<b>COFFEE-BASED DRINKS  .....</b>	<b>22</b>
Setting up the machine to make coffee-based drinks.....	22
Directly selected drinks.....	22
Customised coffee-based drinks .....	22

---

Preparation with pre-ground coffee .....	23
<b>EXTRA SHOT .....</b>	<b>25</b>
<b>INDICATIONS FOR MAKING COFFEE-BASED DRINKS .....</b>	<b>26</b>
Tips for a hotter coffee.....	26
<b>BEAN ADAPT TECHNOLOGY .....</b>	<b>27</b>
<b>COFFEE ROUTINE .....</b>	<b>28</b>
<b>MILK-BASED DRINKS  .....</b>	<b>29</b>
Preparing the milk carafe .....	29
Which milk to use? .....	29
Filling and attaching the milk carafe .....	29
Adjusting the amount of froth .....	30
Making milk-based drinks .....	30
Cleaning the milk carafe after use .....	30
<b>MAKING “TO GO” BEVERAGES.....</b>	<b>32</b>
Cleaning the De’Longhi travel mug (sold separately) every time after use .....	33
<b>HOT WATER .....</b>	<b>34</b>
<b>“MY” FUNCTION .....</b>	<b>35</b>
Choose the drink (Use the beans left in the coffee grinder to make a drink): .....	37
Grind & Empty (Run a grinding cycle without preparing any drink, to empty the grinder of its contents) .....	37
You can now switch the bean hopper .....	37
<b>BEAN SWITCH SYSTEM .....</b>	<b>37</b>
<b>CLEANING THE MACHINE .....</b>	<b>38</b>
Internal circuit of the machine.....	39
Bean hopper.....	39
Coffee grounds container.....	40
Drip tray and drip tray grille .....	40
Inside of the machine .....	41
Water tank.....	41
Coffee spouts.....	42
Pre-ground coffee funnel .....	42
Removable brewing unit .....	42
Thorough cleaning of milk carafe .....	43
<b>DESCALING.....</b>	<b>45</b>
<b>WATER SOFTENER FILTER .....</b>	<b>48</b>
Installing the filter.....	48
Replacing or removing the filter .....	49
<b>FREQUENT AND ALARM MESSAGES .....</b>	<b>50</b>

---

**FAQ 57**

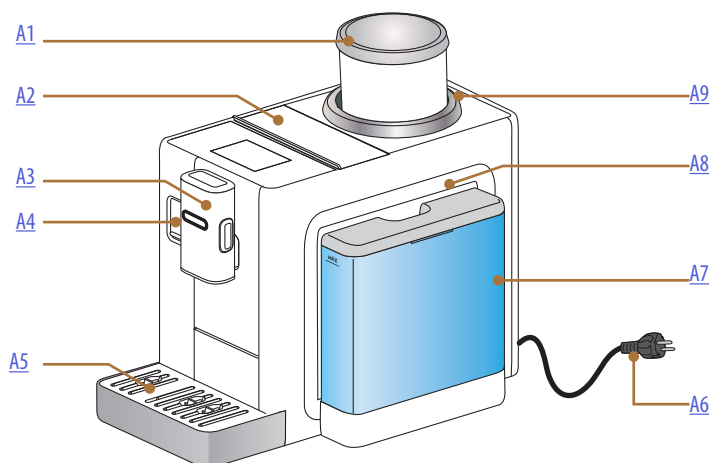
**TECHNICAL DATA..... 62**

Tips for Energy Saving .....62

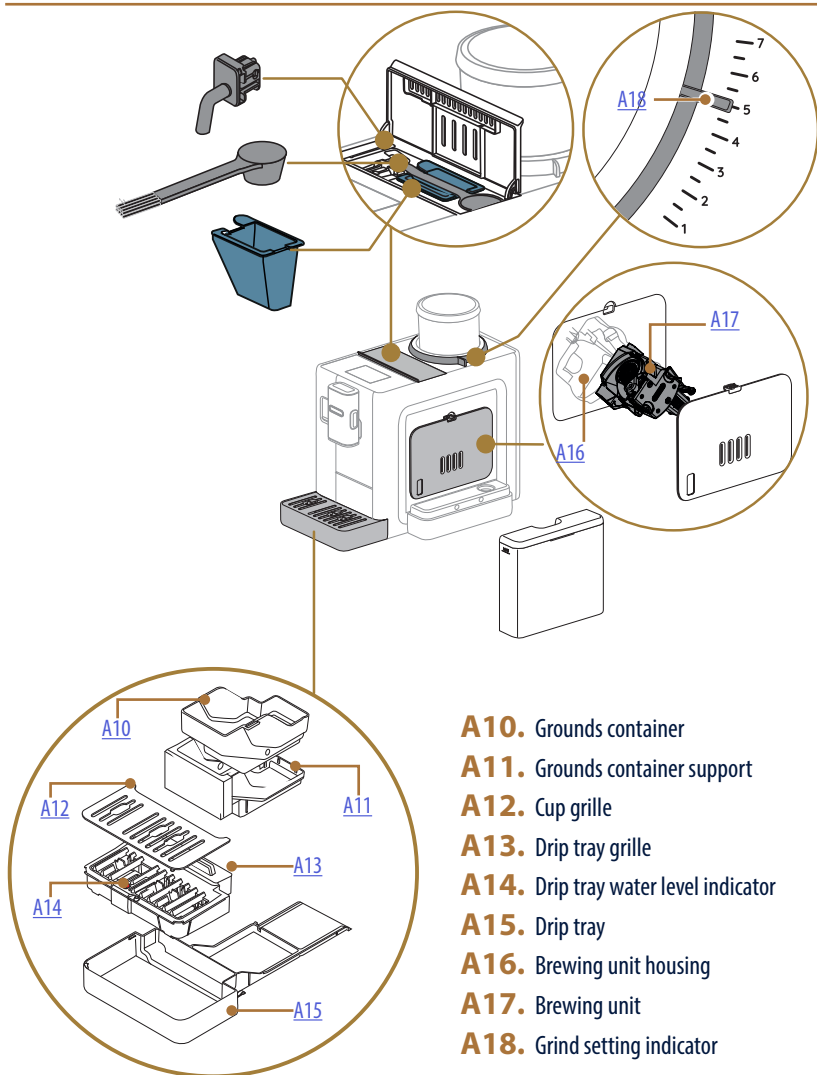


## Rivelia Description of the machine

---

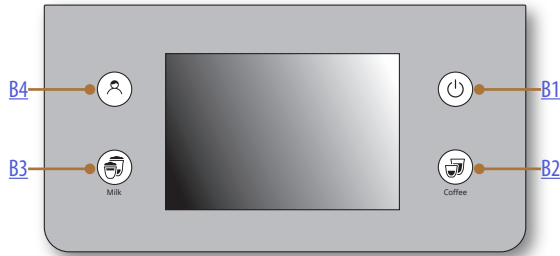


- A1.** Bean hopper with lid
- A2.** Lid covering accessories/pre-ground coffee compartment
- A3.** Coffee spouts (height-adjustable)
- A4.** Flap covering milk carafe connector/hot water spout
- A5.** Drip tray
- A6.** Power cord
- A7.** Water tank and lid
- A8.** Brewing unit access flap (accessible when water tank is removed)
- A9.** Coffee grinding adjuster ring

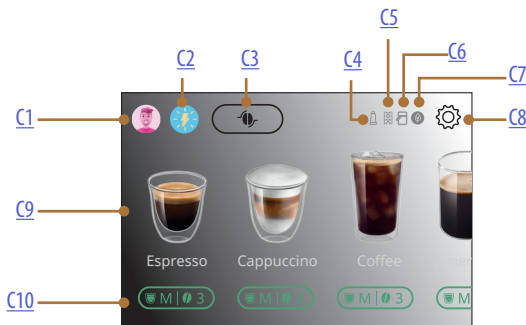




## Rivelia Description of panel and homepage



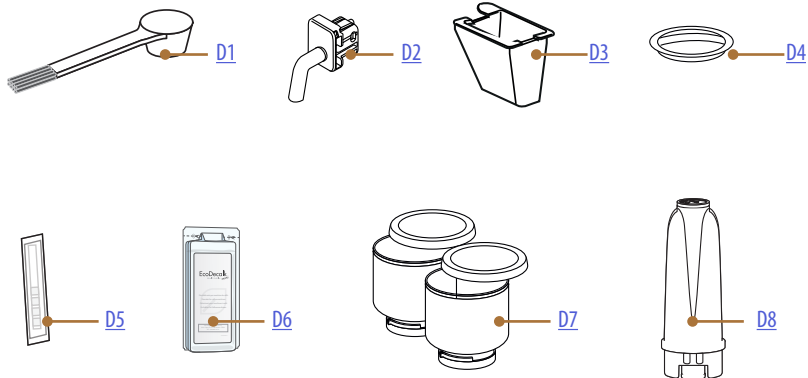
- B1.** ON/Standby button
- B2.** Coffee-based drinks selection button
- B3.** Milk-based drinks selection button
- B4.** Profile selection button



- C1.** Selected profile
- C2.** Coffee Routines
- C3.** Bean Adapt Technology
- C4.** Filter spent indicator
- C5.** Descale warning indicator
- C6.** Milk carafe Clean indicator
- C7.** Energy saving indicator
- C8.** Settings menu
- C9.** Direct drink selection
- C10.** Drink customization bar

## Rivelia Description of accessories \*

---



\* Accessories: number and type differ according to model

### INSIDE THE MACHINE ACCESSORIES COMPARTMENT [A2](#)

- D1.** Pre-ground coffee scoop/brush
- D2.** Hot water spout
- D3.** Removable pre-ground coffee funnel

### ON THE SOCKET WHERE THE BEAN HOPPER IS FITTED TO THE MACHINE

- D4.** Coffee grinder protective cover

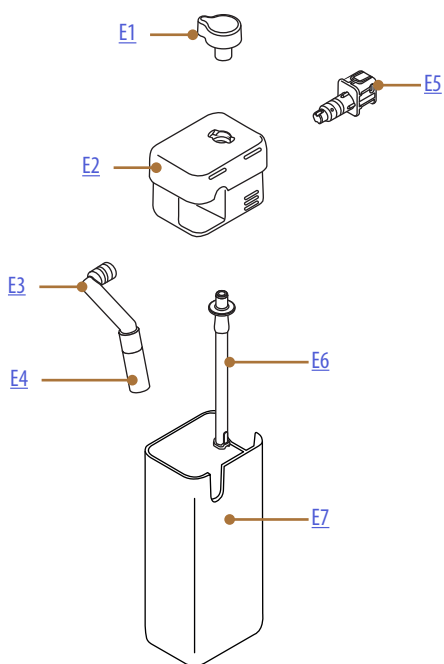
### IN THE ACCESSORIES PACK

- D5.** "Water Hardness Test" strip
- D6.** Descaler
- D7.** Interchangeable bean hoppers
- D8.** Water softener filter

## Rivelia Description of milk carafe

---

**LatteCrema**  
HOT 



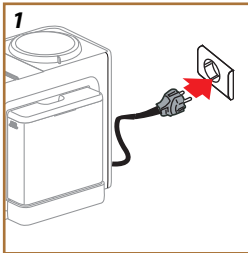
- E1.** Froth adjustment/Clean dial
- E2.** Milk carafe lid
- E3.** Milk spout (height-adjustable)
- E4.** Milk spout extension
- E5.** Milk carafe connector (removable for cleaning)
- E6.** Milk intake tube (silicone)
- E7.** Milk container

## Rivelia Using the machine for the first time



### Please note:

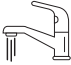
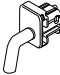
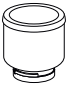

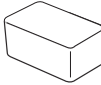
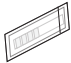
- Possible traces of coffee in the grinder are the result of settings tests performed on the machine before sale, proof of the meticulous care and attention we invest in our products.
- When used for the first time, all removable accessories that make contact with water or milk (milk carafe, water tank) should be rinsed with hot water. For best results, wash the milk carafe in a dishwasher.

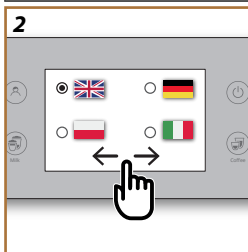


1. Connect the power cord to the mains supply (fig. 1).

The machine switches on and will show you how to set it up the way you prefer: follow the instructions displayed and the Rivelia will be ready for use!

### Here are the essentials:

	Fresh drinking water
	Hot water spout
	Bean hopper <i>(you'll find it in the accessories pack)</i>
	Your favourite coffee beans
	A container <i>(make sure the capacity is at least 0.2 litres)</i>
	Water hardness test strip <i>(you'll find it in the accessories pack)</i>

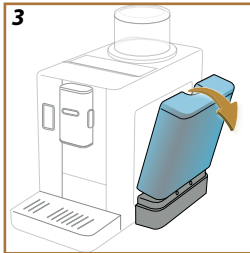


### Select your language

2. Scroll through the pages of the display (fig. 2) until your language appears, then select the corresponding flag;
3. Press "Done" to go to the next step.

### Select the day and time

4. Select the exact day and time and press "Next": select the day and time display format and press "Next".



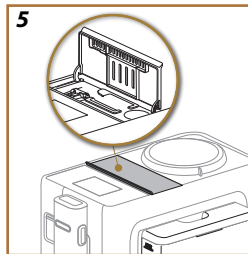
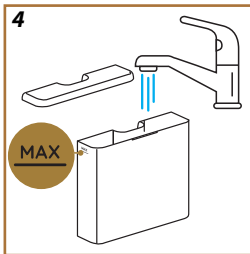
### Fill the water tank

5. Detach the water tank.

#### Please note:

Tilt the water tank slightly to ensure that it separates correctly from the machine (fig. 3).

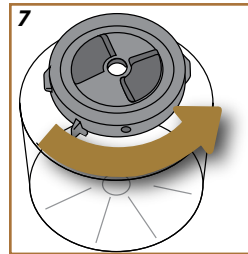
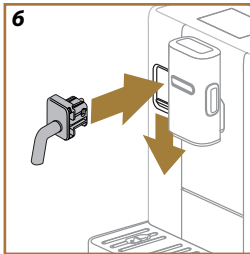
6. Fill the tank with fresh drinking water up to the MAX level (fig. 4) and reposition it in the machine, then press "Next".



### Prepare the machine

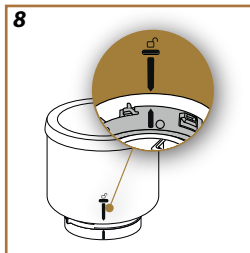
7. Open the lid of the accessories compartment and take out the hot water spout (fig. 5).

8. Push down the flap of the milk carafe connector/hot water spout and attach the hot water spout (fig. 6). Press "Next".



### Fit the bean hopper

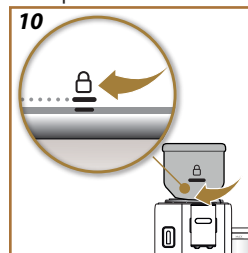
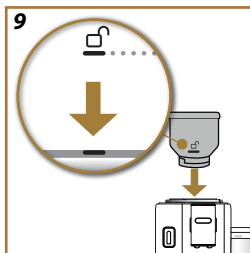
9. Check that the grind setting indicator is set to "5", and if not, set it to "5". Press "Next".
10. Remove the protective cover of the coffee grinder from the bean hopper socket.

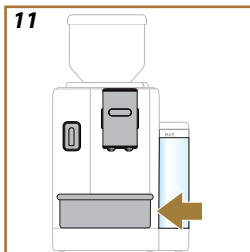


11. Take one of the bean hoppers, turn it upside down and check that the bottom section is securely closed: to make absolutely sure, turn the bottom section anticlockwise until a click is heard (fig. 7). The bean hopper is closed correctly when the two arrows are aligned (fig. 8). Press "Next".

12. Fill the bean hopper with the beans you want to use and close it securely again: press "Next".

13. Position the bean hopper in the socket and twist clockwise to lock it in place. To ensure it is fitted correctly, align the ☐ symbol with the mark on the lower ring (fig. 9) and, when inserted, turn the hopper to the ☐ position (fig. 10). Press "Next".





### Using for the first time

- Position a container of at least 0.2 litres capacity under the coffee and hot water spouts (fig. 11).
- Press "Yes" to start the rinse function. Delivery will stop automatically.

### Tips

Tips for use will appear on the display. Read them carefully: they will be of help when using the machine. Press "Next" to continue.

### Check the hardness of the water

The machine will prompt for descaling to be carried out after a predetermined period of time, depending on the water hardness. The machine can also be programmed according to the actual hardness of the local water supply, so that descaling is required less frequently. Proceed as follows:

- Press "Start" and remove the supplied "Total hardness test" strip (in the accessories pack) from its wrapper. Press "Next".
- Immerse the strip completely in a glass of water for about one second.
- Remove the strip from the water and shake lightly. Press "Next". After about a minute, 1, 2, 3, or 4 red squares will appear, depending on the water hardness; each square corresponds to 1 level;

### Setting water hardness

- Press the dot corresponding to the water hardness measured previously, as indicated in the following table:

Test strip	Water hardness
	Level 1
	Level 2
	Level 3
	Level 4

- Press "Ok".
- The machine is now reprogrammed with the new water hardness setting.

#### **Please note:**

The water hardness can be changed at any time by way of the settings menu (see "[Water hardness](#)").




---

This done, the machine is ready to be configured on the basis of your needs and preferences: press “Start”.

[WATCH THE VIDEO HERE](#)

### Profiles



1. Set the number of users for this machine. Press "Next".
2. To customise the number, press  on the profile icon, make the choices, then press the button showing the name, press “Change”, and finally press “Save”.
3. Press "Next". the profiles are confirmed.

### Tutorial

1. Press "Next": the machine is ready to show a short introductory video.
2. Press “Start” and watch the display.
3. The machine illustrates the main functions. Press "Next" to move on to the next screens.

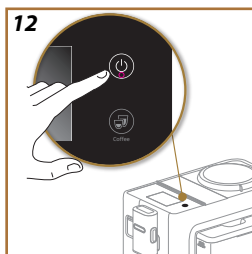
When the introduction has finished, press “Start” and enjoy your machine.

#### **Please note:**

- The first time the machine is used, it will be necessary to make 4-5 cappuccinos before the drink in the cup tastes as it should.
- The first time the machine is used, the water circuit will be empty and operation could be very noisy. The noise becomes less as the circuit fills.


## Rivelia Turning the machine on

---



**Please note:**


Each time the machine is turned on, it will run an automatic preheat and rinse cycle that cannot be interrupted. The machine is not ready for use until the cycle has been completed.

1. To turn the machine on, press the  button (fig. 12): the machine switches on.
2. Once the machine has heated up, a rinse cycle begins, during which hot water is delivered from the coffee spout; in addition to heating up the boiler, this has the effect of heating up the internal circuits as hot water is circulated through them.

## Rivelia Turning the machine off

---

Whenever the machine is turned off after being used to make coffee, it will run a rinse cycle automatically.

1. To turn the machine off, press the  button (fig. 12).
2. If envisaged, the machine runs a rinse cycle, delivering hot water from the coffee spouts, then switches off (stand-by).


### **Important!**

Never unplug the machine while it is switched on.

### *Switching off for extended periods*

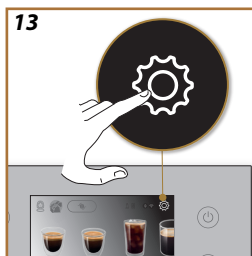
If the machine is not going to be used for extended periods (e.g. holidays, periods of absence), follow the directions in heading [Drain water](#).

If the machine has not been used for a few days, proceed as follows:

- press the  button to turn the machine off;
- empty and clean the grounds container and the water tank (fig. 16);
- unplug the power cord from the socket.

### **Please note:**

When turning the machine on again, fill the water tank and, before making any kind of drink, run 3 rinse cycles as indicated in heading [Rinsing](#).




### Rinsing

Using this function, hot water can be delivered from the coffee spouts to clean and heat the internal circuit of the machine.

Place a container of at least 0.2 litres capacity under the spouts (fig. 11).

To activate this function, proceed as follows:

1. Press  to access the settings menu (fig. 13).
2. Scroll through the pages until the item "Rinse" is displayed;
3. Press "Yes" to start delivery: after a few seconds, hot water is delivered from the coffee spout to clean and heat the internal circuit of the machine.
4. To stop rinsing, press "Stop", or wait for the rinse cycle to stop automatically.

#### **Please note:**

- If the machine is not used for more than 3-4 days, it is highly advisable, when turning it on again, to run 2-3 rinses before use;
- Water may find its way into the grounds container during the rinse procedure: this is quite normal.



### Descaling

For instructions on descaling the machine, go to ["Descaling"](#).

### Water filter

For instructions regarding the water filter, go to ["Water softener filter"](#).

### General

1. Press  to access the settings menu (fig. 13).
2. Scroll through the pages until the item "General" is displayed;  
In this section of the menu, the following functions can be activated or deactivated with a simple tap:
  - "Audible warning": when active, the machine beeps every time an operation is performed.
  - "Energy saving": use this function to activate or deactivate energy saving mode. When active, the function reduces energy consumption in compliance with current European regulations: the  symbol appears on the homepage.
3. Press "X" to save the new selection and go back to the homepage.


#### **Please note:**

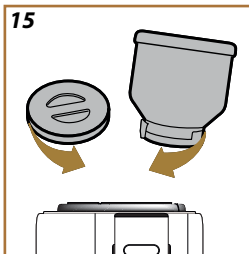
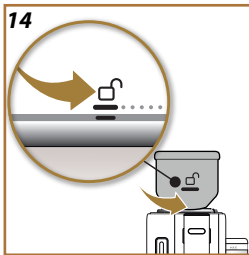
The serial number of the machine is displayed on the screen: this is useful for identification purposes.

## Auto-off

Auto-off can be set so that if the machine is not being used, it will switch off after a given interval of time has elapsed.

To programme Auto-off, proceed as follows:

1. Press  to access the settings menu (fig. 13).
2. Scroll through the pages until the item "Auto-off" is displayed;
3. The display will show the auto-off time currently selected, along with the other options that are available: select the auto-off time as desired.
4. Press "X" to save the new selection and go back to the homepage.



### **Please note:**



The auto-off time used by the machine is factory-set to a low value, so as to minimize energy consumption. Selecting a higher value for a longer auto-off time will have the effect of increasing the energy consumption of the machine.

## Support

1. Scan the QR-Code to see the manual and access support.
2. Press "X" to go back to the homepage.

## Grind & Empty

This function, which clears away residual beans by grinding them up, can be used to empty the coffee grinder (not the bean hopper).

1. Press  to access the settings menu (fig. 13).
2. Scroll through the pages until the item "Grind&Empty" is displayed;
3. Press "Read more";
4. Twist the bean hopper to the unlocked position () (fig. 14) and leave it there until the operation has been completed.
5. Press "Start": the machine will grind any beans there may be left in the grinder.
6. When done, remove the bean hopper and either position the other one (see "[Fit the bean hopper](#)") or fit the protective cover over the coffee grinder (fig. 15).
7. The homepage reappears, and the machine is ready for use.


### **Important!**

- The presence of powdery coffee residues in the bean hopper socket is perfectly normal.
- If the bean hopper proves difficult to fit, make sure there are no coffee beans in the hopper socket on the machine. If traces of coffee are found, clean the bean hopper socket with the brush provided and wipe with a soft clean cloth. Remove powdery coffee residues with a vacuum cleaner.

---

### *Cleaning the milk carafe*

The machine offers a tutorial on thorough cleaning of the carafe, which will ensure smooth operation of the Lattecrema system over time.


1. Press  to access the settings menu (fig. 13).
2. Scroll through the pages until the item “Cleaning the milk carafe” is displayed.
3. Press “Next” or “Back” to read the suggested sequence of steps.
4. When at the final step, press “Done” to go back to the settings menu.
5. Press “X” to go back to the homepage.

**Please note:**

The procedure is illustrated in heading [Thorough cleaning of milk carafe](#)

### *Coffee temperature*

To change the temperature of the water used to make coffee, proceed as follows:

1. Press  to access the settings menu (fig.13).
2. Scroll through the pages until the item “Coffee temperature” is displayed;
3. Press “Set”.
4. Select the required temperature from those suggested;
5. Press “<” to save the new selection and go back to the settings menu;
6. Press “X” to go back to the homepage.

**Please note:**


The effect of varying the temperature is most noticeable with long drinks.

**Bean Adapt Technology :**

We suggest accessing Bean Adapt Technology from the homepage, so that this parameter can be set as appropriate for the particular coffee bean used.


### *Statistics*

This function displays statistics relating to the machine. To view the statistics, proceed as follows:

1. Press  to access the settings menu (fig. 13).
2. Scroll through the pages until the item “Statistics” and the main data are displayed; To see further information, press “Read more”.
3. Press “<” to quit the page.
4. Press “X” to go back to the homepage.


### *Languages*

To change the language of the homepage, proceed as follows:

- 
1. Press  to access the settings menu (fig. 13).
  2. Scroll through the pages until the item "Languages" is displayed:
  3. Press "Set".
  4. Press the flag corresponding to the desired language: the display is updated immediately and presented in the selected language.
  5. Press "<" to save the new selection and go back to the settings menu;
  6. Press "X" to go back to the homepage.


### *Day and time*

To change the day and time on the homepage, proceed as follows:

1. Press  to access the settings menu (fig. 13).
2. Scroll through the pages until the item "Day and time" is displayed;
3. Press "Set".
4. Set the hour and minutes, and the day, and select the format. Press "Ok" to confirm (or "<" to cancel and go back to the previous step).
5. Press "X" to go back to the homepage.

### *Coffee grinder settings*

The machine offers a tutorial on how to adjust the coffee grinder correctly and ensure the best results.

1. Press  to access the settings menu (fig. 13).
2. Scroll through the pages until the item "Coffee grinder settings" is displayed.
3. Press "Read more"; to watch tutorial on how to adjust the level of grinding. Press "Next" or "Back" to read the advice.
4. When at the final page, press "Ok" to go back to the settings menu.
5. Press "X" to go back to the homepage.

#### **Please note:**


- After completing the above procedure, at least 3 coffees should be prepared and delivered before making any further adjustment to the coffee grinder. If the coffee is still not being delivered correctly by the machine, repeat the procedure.
- The adjuster ring must be turned only when the coffee grinder is in operation during the initial step of preparing coffee-based drinks.

#### **Bean Adapt Technology :**

We suggest accessing Bean Adapt Technology from the homepage, so that this parameter can be set as appropriate for the particular coffee bean used.

### *Water hardness*

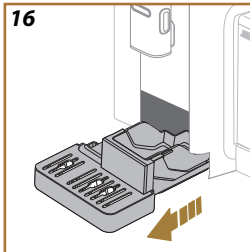
To enter a new water hardness setting, proceed as follows:


1. Measure the water hardness as described above, see "[Check the hardness of the water](#)".
2. Press  to access the settings menu (fig. 13).
3. Scroll through the pages until the item "Water hardness" is displayed. Press "Set".
4. Select the level corresponding to the result give by the test strip.
5. Press "<" to save the new selection and go back to the settings menu.
6. Press "X" to go back to the homepage.

### Drain water

To avoid the water in the circuit freezing if the machine is to be left idle for an extended period, or before taking it to a service centre, it is advisable to drain the water circuit.

Proceed as follows:




1. Press  to access the settings menu (fig. 13).
2. Scroll through the pages until the item "Empty circuit" is displayed.
3. Press "Ok" to start the guided procedure;
4. Remove, empty and reposition the grounds container and the drip tray (fig. 16), then press "Next";
5. Position a container of 0.2l capacity under the spouts (fig. 11). Press "Next".
6. The machine runs a rinse cycle, delivering hot water from the spouts.
7. Once rinsing is complete, remove the water tank (fig. 3) and empty it.
8. Remove the filter (if installed) from the water tank and press "Next".
9. Reposition the tank (empty) and press "Yes";
10. When ready, press "Yes" to confirm.
11. Wait for the machine to empty the circuit; (Caution: beware of hot water coming from the spouts!). As the water circuit gradually empties, the machine could become noisier: this is a normal aspect of operation.
12. Once the circuit has emptied, remove, empty and reposition the drip tray, then press "Yes";
13. Press "Ok": the machine will switch off (standby).
14. Unplug the machine from the mains power supply.
15. The next time the machine is turned on, follow the instructions in the heading "[Using the machine for the first time](#)".

### Default values

This function resets all menu settings and all user customizations, restoring the factory default values (with the exception of the language, which remains as set, and the statistics).

Proceed as follows:



- 
1. Press  to access the settings menu (fig. 13).
  2. Scroll through the pages until the item "Default values" is displayed.
  3. Press "Read more":
  4. Select the items you want to reset: machine or individual profile, then press "Next";
  5. Follow the relative instructions until prompted to confirm, and press "Ok";
  6. Press "V" to go back to the homepage (C)

**Please note:**

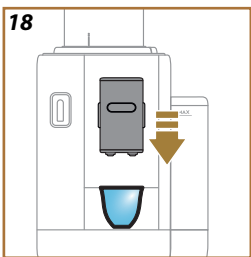
Whenever the machine (not the individual profile) is reset to the factory default values, the system will suggest running the first time start-up operations from [Profiles](#)



Your machine can be used to make a great variety of drinks: scroll through the options on the display until you see the one you want (fig. 17):

	Hot	Cold
Espresso	✓	✓
2X Espresso	✓	✗
Espresso lungo	✓	✗
Coffee	✓	✓
Filter Style / Long	✓	✗
Americano	✓	✓

### Setting up the machine to make coffee-based drinks



#### Important!

Do not use green, caramelized or candied coffee beans as they could stick to the coffee grinder and render it unusable.

1. Place 1 or 2 cups under the coffee spout.
2. Lower the spout as near as possible to the cup (fig. 18): this will give a creamier top.

### Directly selected drinks



1. Touch the image on the homepage that illustrates the desired coffee drink (e.g. espresso, fig. 19).

2. **Hot coffee-based drinks:** the machine proceeds with preparation.

#### Cold coffee-based drinks:

- Select either an "Ice" drink or an "Extra ice" drink: press "Next";
- Depending on the selection made, the machine will suggest the amount of ice to add to the drink before proceeding with preparation: place the recommended number of ice cubes in the glass (fig. 20): press "Deliver".
- The machine proceeds with the preparation.

A description of each single step (grinding, delivery of coffee) appears on the display.

Once the preparation has been completed, the machine is ready for use again.

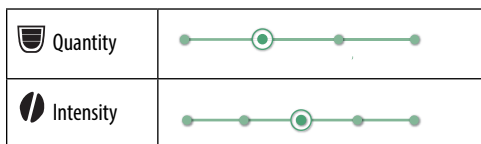


### Customised coffee-based drinks

To make coffee-based drinks with customised parameters, proceed as follows:



1. Press the customization bar at the bottom of the image corresponding to the desired drink (e.g. espresso, fig. 21). The display shows the parameters that are customizable according to preference:



2. **Hot coffee-based drinks:** After setting the parameters, press "Deliver": the machine proceeds with preparation and a description of each single step (grinding, delivery of coffee) appears on the display;  
**Cold coffee-based drinks:** Select the quantity, then press Start and proceed as follows:
  - Select either an "Ice" drink or an "Extra ice" drink: press "Next";
  - Before delivering the drink, the machine suggests an appropriate number of ice cubes to add: place the quantity of ice indicated in the glass (fig. 22); press "Deliver".
  - The machine proceeds with the preparation. A description of each single step (grinding, preparation, delivery of coffee) appears on the display.
3. When delivery has ended, press "Save" to store the new settings or "Cancel" to retain the previous parameters. You can also save them in your Coffee Routine by ticking the relative box

#### ***Please note***

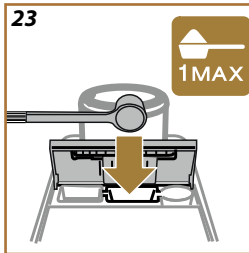
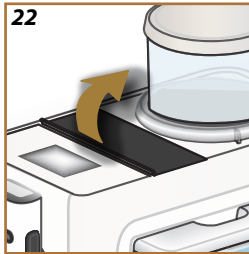
If saved, the new settings will be stored ONLY in the selected profile.


The machine is ready to be used again.

#### ***Preparation with pre-ground coffee***

##### ***Important!***

- Never add pre-ground coffee when the machine is off, or it could spread through and soil the inside of the machine. In this situation the machine could be damaged.
- Never use more than one level scoop as it could dirty the inside of the machine or clog the funnel.
- When using pre-ground coffee, you can make only one cup at a time.
- When making **Filter Style / Long** or **2X Espresso**: halfway through preparation, when prompted by the machine, add one level scoop of pre-ground coffee and press "Ok".




1. Press the customization bar at the bottom of the image corresponding to the desired drink (e.g. espresso, fig. 21). The display shows the parameters that are customizable according to preference:
2. Select "Pre-ground" ;
3. Choose the quantity and press "Deliver".
4. Lift the lid of the accessories compartment (fig. 22).
5. Check that the pre-ground coffee funnel is inserted and make sure it is not blocked; add one level scoop of pre-ground coffee (fig. 23). Press "OK" to proceed with delivery.
6. The machine proceeds with preparation and a description of each single step (water heating, delivery of coffee) appears on the display. Once the preparation has been completed, the machine is ready for use again.

Give a boost to the following drinks by adding an extra shot of espresso:

	Hot
Espresso	✓
Espresso lungo	✓
Filter Style / Long	✓
Coffee	✓
Americano	✓
Cappuccino	✓
Latte Macchiato	✓
Espresso Macchiato	✓
Caffelatte	✓
Cappuccino Mix	✓
Cortado	✓
Flat White	✓

Proceed as follows:

1. Press the customization bar at the bottom of the image corresponding to the desired drink (e.g. espresso, fig. 21). The display shows the parameters that are customizable according to preference:
2. Press "Extra Shot", then "Ok".
3. Select the desired quantity and intensity. Press "Deliver".
4. Confirm by pressing "Ok". (Ticking the box, the message will not be displayed again).
5. The machine proceeds with preparation and a description of each single step appears on the display.
6. When delivery has ended, press "Save" to store the new settings or "Cancel" to retain the previous parameters. You can also save them in your Coffee Routine by ticking the relative box. In this instance, the Extra Shot is indicated by the  symbol in the customization bar of the drink.



**Please note**

If saved, the new settings will be stored ONLY in the selected profile.

The machine is ready to be used again.



## Rivelia Indications for making coffee-based drinks

---

- When the machine is making coffee, delivery can be interrupted at any moment by pressing “Stop” or “Cancel”.
- At the end of delivery, to increase the quantity of coffee in the cup, simply press “ Extra”. When the required quantity has been reached, press “ Stop” or “Cancel”.
- Sundry alarm messages could be displayed while using the machine (“Fill tank with fresh water up to the MAX level”, etc.) their meaning is explained in heading “[Frequent and alarm messages](#)”.
- If the coffee emerges drop-by-drop, too weak and not creamy enough or too cold, refer to the tutorial on adjusting the coffee grinder (see under “[Coffee grinder settings](#)”) and to heading “[FAQ](#)”.
- If “Energy Saving” mode is activated, there may be a few seconds delay before the first coffee is delivered.

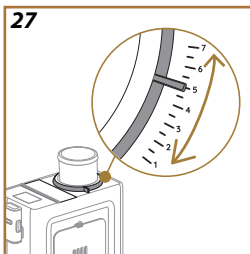
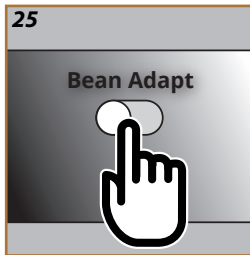
### *Tips for a hotter coffee*

To make a hotter coffee, proceed as follows:



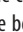
- run a rinse cycle before preparing and delivering the coffee (see “[Rinsing](#)” in the settings menu .
- warm the cups with hot water using the hot water function (see heading “[Hot water](#)”).
- select a higher temperature setting for the coffee (see “[Coffee temperature](#)” in the settings menu .






## Rivelia Bean adapt technology



A coffee expert at your fingertips that helps you, in a few short steps, to optimize the brewing of your coffee and the way it tastes in the cup. Smart technology guides you through adjustment and operation of the machine, according to the selected coffee beans: from grinding to brewing, each step will be controlled to get the best from any coffee bean.

1. On the homepage, press  (fig. 24).
2. Enable Bean Adapt (fig. 25).
3. The machine shows a reminder that before any adjustment of the coffee grinder, at least 3 coffees need to be made. Press Ok.
4. Select the variety of coffee bean being used: 100% Arabica or a blend of Arabica and Robusta (this information will be found on the pack containing the beans). Press  for additional information. Press "Next".
5. Select the type of roast, tapping the colour depth description that appears closest to the colour of the beans (fig. 26). Press  for additional information. Press "Next".

The machine will now check how the settings can be adjusted to give the best possible outcome, based on the information it has:

6. Check the current setting of the coffee grinder and select it from the drop-down menu. Press  for additional information. Press "Next".
7. Press "Deliver" to prepare an Espresso. Following delivery, press "Next".
8. The machine will ask how the coffee tasted and, according to the answer it gets, recommend the optimum parameters: press "Next" on each page to bring up the next parameter:
  - Coffee temperature;
  - Intensity;
  - Coffee grinder setting (turn the indicator ring only when the beans are actually being ground) (fig. 27).
9. Tap  on the name of the beans and the keyboard pops up to allow changes. To confirm the current name, press "Ok".
10. Press "Save": the machine stores the settings and the name of the bean appears in place of the  logo.

### Please note

- Bean Adapt Technology is applicable only to Espresso coffee.
- Up to 6 different bean profiles can be stored. All the stored profiles are accessed by pressing the name on the homepage.



With the Coffee Routine function, Rivelia can remember how you like your coffee during the day and update your drinks list.


1. On the homepage, press the symbol corresponding to the current coffee routine (fig. 28).
2. Activate the coffee routine (fig. 29) and press “Yes” to confirm.
3. A symbol appears on the homepage, which will differ according to the time of day (fig. 30).

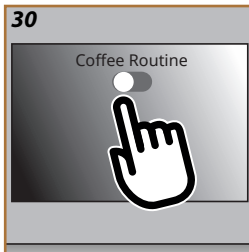
In this way the machine is able to offer the preferences saved from previous preparations: your favourite coffee, just how you like it.

**Please note**

To disable this function, go to the homepage and press the symbol indicating the current coffee routine, then press the “Coffee Routine” button (fig. 29). In this instance:

- confirm that the function is to be disabled by pressing “Yes”;
- the machine prompts for an existing routine to be selected and confirmed with “Ok”.

This symbol  now appears on the homepage, replacing the symbol of the coffee routine currently selected.







## Preparing the milk carafe

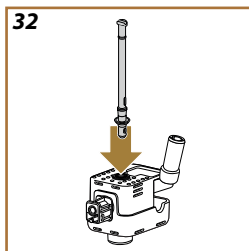
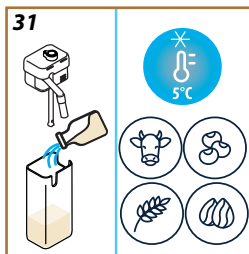
### Please note






To avoid the preparation of milk with insufficient froth or large bubbles, always clean the milk carafes as described in headings "[Cleaning the milk carafe after use](#)" and "[Thorough cleaning of milk carafe](#)"

## Which milk to use?

The quality of the froth can vary depending on:

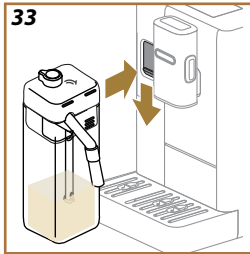
- the temperature of the milk or vegetable drink used (for best results, always use milk or vegetable drinks straight from the fridge, 5 °C);
- type of milk or vegetable drink;
- the brand used;
- ingredients and nutritional values.



LatteCrema HOT 	
 Cow's milk	
Whole (fat >3,5%)	✓
Semi-skimmed (fat between 1.5 and 1.8%)	
Skimmed (fat <0.5%)	
Vegetable drinks	
 Soya	✓
 Almond	✓
 Oatmeal	✓

## Filling and attaching the milk carafe

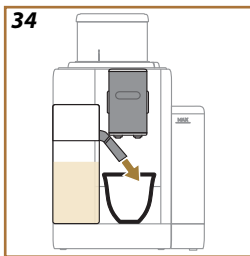
1. Raise the lid and fill the milk container with a sufficient quantity of milk, not exceeding the MAX level marked on the container (fig. [31](#));







2. Make sure the milk intake tube is secured correctly to the socket located on the underside of the milk carafe lid (fig. 32);
3. Reposition the lid on the milk container;
4. Lower the flap and attach the carafe to the connector, pushing it fully home (fig. 33). The machine emits a beep (if the beep function is enabled);
5. Place a sufficiently large cup under the coffee spouts and under the milk spout. The milk spout can be lengthened by adjusting the extension (fig. 34);
6. Select the desired drink as described in the following steps.

### Adjusting the amount of froth

Turn the froth adjustment dial to select the amount of froth on the milk that will be delivered when making milk-based drinks.



Dial position	Recommended for...
	LatteCrema HOT 
 Delicate	<ul style="list-style-type: none"> <li>• Caffelatte</li> </ul>
 Creamy	<ul style="list-style-type: none"> <li>• Latte Macchiato</li> <li>• Flat White</li> <li>• Cortado</li> </ul>
 Dense	<ul style="list-style-type: none"> <li>• Cappuccino</li> <li>• Cappuccino Mix</li> <li>• Espresso Macchiato</li> <li>• Hot Milk (frothed)</li> </ul>



### Making milk-based drinks

On the homepage, press directly on the image corresponding to the required drink (fig. 35).

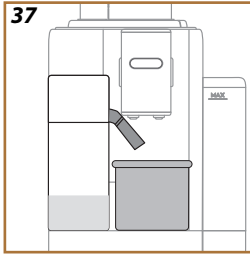
As in the case of coffee-based drinks, a drink can be customised by pressing on the bar at the bottom of the image on the homepage (fig. 36).

To interrupt delivery of the drink manually, press "Stop" or "Cancel".



### Cleaning the milk carafe after use

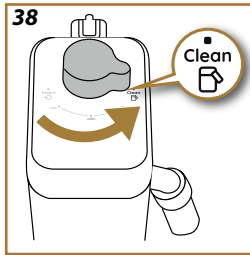
Every time a milk-based drink is delivered, the machine will prompt the user to clean the carafe (Clean function) to ensure that the lid of the carafe is not left unwashed. To start the cleaning operation, proceed as follows:



1. Leave the milk carafe in the machine (there is no need to empty the container);
2. Place a cup or other recipient under the milk spout (fig. 37);
3. Turn the froth adjustment/clean dial to the "Clean" position (fig. 38): hot water and steam are delivered from the milk spout. Cleaning stops automatically;
4. Turn the dial back to one of the froth selections;

**Preparing several drinks in succession:**


- To proceed with further preparations, when the message to clean the carafe appears (Clean function), press "Cancel". Proceed with cleaning of the carafe after the final preparation.



**After multiple preparations, the milk container is empty or the milk that remains is not enough to make further drinks**

- Having carried out the cleaning step (with the "Clean" function), disassemble the milk carafe and clean all components, proceeding as described in heading "[Cleaning the milk carafe after use](#)"


**After multiple preparations, there is enough milk left in the container to make further drinks**

- Having carried out the cleaning step with the "Clean" function, remove the milk carafe and put it straight in the refrigerator. The "HOT" carafe  can be kept in the refrigerator no more than 2 days, after which time all components should be cleaned as described in the heading "[Thorough cleaning of milk carafe](#)".

**Important:**

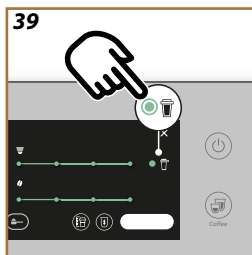
If the milk carafe is left out of the refrigerator for more than **30 minutes**, disassemble and clean all components, proceeding as described under heading "[Thorough cleaning of milk carafe](#)".


**Following preparation of milk-based drinks — general notes:**

- If the milk carafe is not cleaned, the symbol  appears on the homepage as a reminder that cleaning is required.
- In certain cases, the machine will need to heat up before cleaning can take place.
- Wait until the Clean function has finished, to ensure it is completed correctly. The function is automatic. It must not be stopped while in progress.

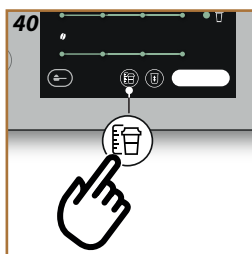
The “To Go” function is ideal for anyone who may want to create a customized take-away drink .

Search the delonghi.com website to find the recommended travel mug for your machine:

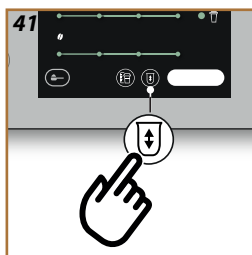


	Travel mug (not included) (capacity 236 ml/ h 130 mm)
	Type: DLSC074
	EAN: 8004399024465




The “To Go” function can be used for preparation of the following drinks:



	Hot	Cold
Coffee	✗	✓
Americano	✓	✓
Cappuccino	✓	--
Latte Macchiato	✓	--
Caffelatte	✓	--
Cappuccino Mix	✓	--
Flat White	✓	--
Milk	✓	--



Proceed as follows:

1. Press the customization bar at the bottom of the image corresponding to the desired drink (e.g. espresso, fig. 21). The display shows the parameters that are customizable according to preference, and the functions that can be selected:
2. Select  (fig. 39): this accesses the “To go” function.
3. Press “Next”, then “Ok”.
4. Pressing  the display will show information relating to the quantity of the drink, and therefore to the requisite size of the travel mug (fig. 40).
5. Press  (fig. 41) to select the quantity of the drink: press “Save”.
6. The new quantity of the “to go” drink will be stored and set automatically for the next time the drink is prepared. Press “X”.
7. Press “Brew”: the machine proceeds with preparation of the drink.

---

**Please note:**

- Each time a different mug is used, it is advisable to stay close to the machine to check the amount of liquid effectively dispensed.
- If saved, the new settings will be stored ONLY in the selected profile.
- A good way to ensure that hot drinks stay warm is to preheat the travel mug with hot water.
- It is advisable to use the travel mug only for the drinks indicated on the homepage.
- If the intention is to use a travel mug other than the one supplied, bear in mind that it must be no taller than 14 cm.

**Important**

- Before screwing on the lid, open the cap to release the pressure;
- Whenever drinks have been prepared with milk, clean the carafe as indicated in the heading "[Following preparation of milk-based drinks — general notes:](#)".
- The contents should be used within 2 hours maximum: once this time has elapsed, empty and clean the mug as described on the following pages.
- For more information, refer to the leaflet accompanying the travel mug.

*Cleaning the De'Longhi travel mug (sold separately) every time after use*

In the interests of hygiene, the travel mug should always be cleaned after use. Do not use abrasive materials that could damage the surface of the container.

Proceed as follows:

1. Unscrew the lid and rinse the container and lid with warm drinking water (40-50 °C).
2. Soak the components in warm water (40-50 °C) and washing up liquid for at least 30 minutes. Do not use scented detergents.
3. Clean the inside of the container and the lid with a clean sponge and washing up liquid, removing any visible dirt.
4. Rinse all components with warm drinking water (40-50 °C).
5. Dry all components with a clean, dry cloth or paper towels, then reassemble.
6. Wash the lid in the dishwasher once a week. The metal container is not dishwasher-safe.



1. Push down the flap of the accessories compartment and attach the hot water spout (fig. 6). Press "Next".
2. Place a cup under the hot water spout.
3. On the homepage:
  - press directly on the image corresponding to hot water: delivery begins;
  - press the customization bar at the bottom of the image and select the quantity to be delivered, then press "Brew": delivery begins;
4. Delivery will stop automatically.

***Please note***




- To stop delivery manually, press "Stop" or "Cancel"
- Immediately after delivery has stopped automatically, the quantity can be increased by pressing "Extra".

## Rivelia “My” function

With the “My” function, you can select the quantity of each single ingredient used for preparation of the hot drink you want to make.

1. Check that the profile selected is the one for which you want to customize the drink;
2. Press the customization bar under the image of the desired drink (e.g. espresso, fig. 21).
3. Press ;
4. Press “Start”;
5. When preparing coffee based drinks, select the intensity or the “Bean Adapt” function: press “Next”;
6. Make sure that a cup of the right size is placed under the coffee spout, and press “Brew”;
7. As the drink is delivered, a progress bar will fill up gradually. Once the minimum programmable quantity is reached, the “Stop” button will be enabled. The  symbol indicates the previous quantity.
8. When the quantity in the cup is as desired, press “Stop”;
9. Press “Save” to store the new parameters for the drink under the selected profile: if “Coffee Routine” is enabled, the machine will suggest the option of saving the drink for that particular time of the day.

### **Please note**

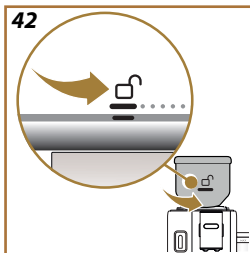
- If saved, the new settings will be stored ONLY in the selected profile.
- Customizing a single drink, the respective double version of the drink is automatically customized as well.
- It is possible to exit programming mode at any given moment by pressing “X”: the values will not be saved.
- To disable the function and prepare the drink using other parameters, press the customization bar relative to the drink: press  on the page to disable the function (  ) and revert to the factory default values.
- To reprogramme the My drink, the parameters must be reset to the factory default values: press the customization bar of the drink and check that the function is enabled (  ). Press “Reset” to restore the factory default values for the drink. The drink can now be reprogrammed.

Quantities table		
Drink	Standard quantity	Programmable quantity
Espresso	40ml	20-180 ml
...>		

---

2X Espresso	40 ml + 40 ml	20-180 ml + 20-180 ml
Espresso lungo	120ml	60-180 ml
Coffee	180ml	100-270 ml
Filter Style / Long	160ml	115-250 ml
Americano	150ml	70-480 ml
Hot water	250ml	20-420 ml

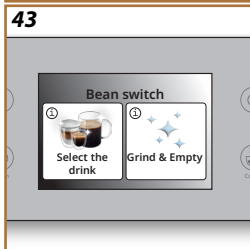




Switch the bean hopper to enjoy a different blend of coffee beans  
Proceed as follows:

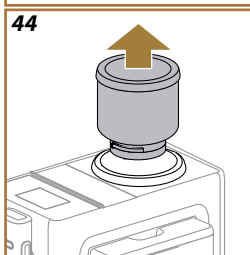
1. Twist the bean hopper to the unlocked position ☞ (fig. 42) and leave it there until the end of the procedure;
2. The display shows the options for the “Bean Switch”: select one of the options and follow the procedure (fig. 43):

*Choose the drink (Use the beans left in the coffee grinder to make a drink):*



3. Select “Choose the drink”.
4. Press “Start”: the homepage displays the drinks you can choose from (the intensity is already set and cannot be changed).
5. Press “Ok” and prepare the drink as usual (ticking the box, the message will not be displayed again).

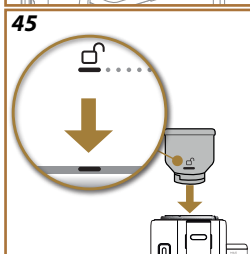
*Grind & Empty (Run a grinding cycle without preparing any drink, to empty the grinder of its contents)*



3. Select “Grind & Empty”
4. Press “Start” and wait for the machine to finishing grinding.

*You can now switch the bean hopper*

5. Remove the bean hopper (fig. 44);
6. Insert the new hopper and twist clockwise to secure it in the socket. To carry out the operation correctly, align the unlock symbol ☞ with the notch on the adjuster ring (fig. 45) and, when inserted, twist the bean hopper into the locked position ☜ (fig. 46).

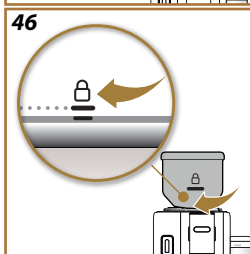


**Please note**

If the bean hopper is switched without emptying the coffee grinder, the coffee delivered subsequently will be made with a blend of old beans and new beans.

**Important!**

- The presence of powdery coffee residues in the bean hopper socket is perfectly normal.
- If the bean hopper proves difficult to fit, make sure there are no coffee beans in the hopper socket on the machine. If traces of coffee are found, clean the bean hopper socket with the brush provided and wipe with a soft clean cloth. Remove powdery coffee residues with a vacuum cleaner.





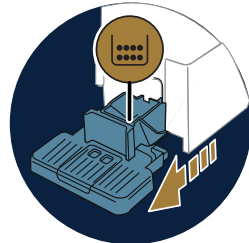
## Rivelia Cleaning the machine



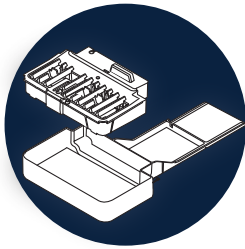
[INTERNAL CIRCUIT OF THE MACHINE](#)



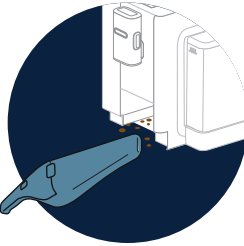
[BEAN HOPPER](#)



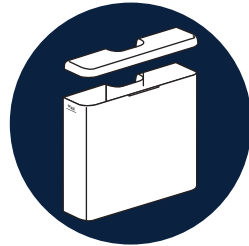
[COFFEE GROUNDS CONTAINER](#)



[DRIP TRAY AND DRIP TRAY GRILLE](#)



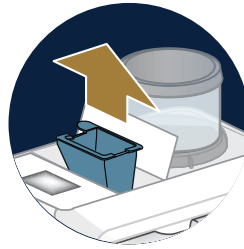
[INSIDE OF THE MACHINE](#)



[WATER TANK](#)



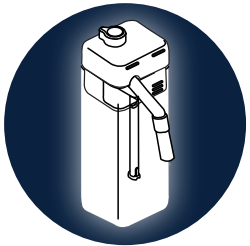
[COFFEE SPOUTS](#)



[PRE-GROUND COFFEE FUNNEL](#)



[REMOVABLE BREWING UNIT](#)

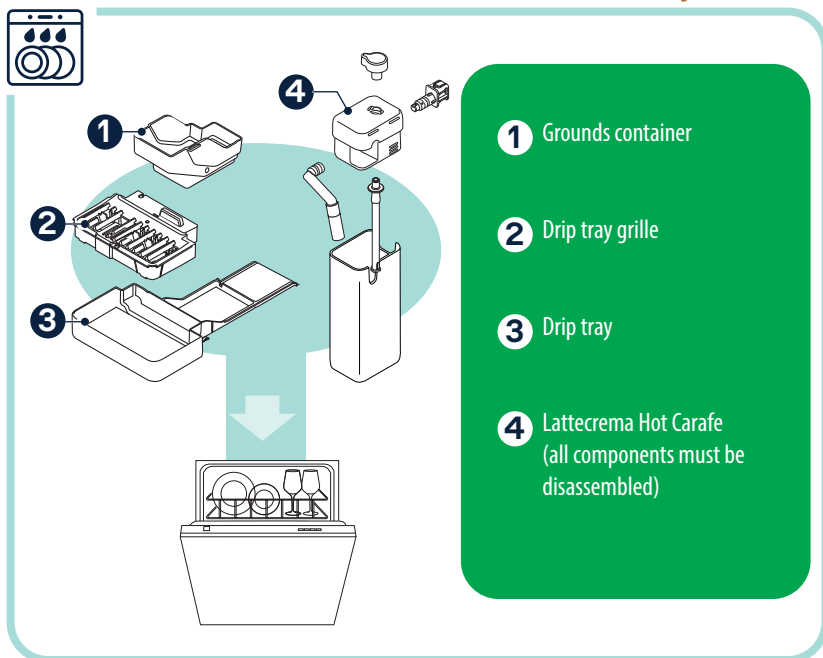


["THOROUGH CLEANING OF MILK CARAFE"](#)

### **Please note**

- Do not use solvents, abrasive detergents or alcohol to clean the machine. With De'Longhi superautomatic coffee machines, no chemical additives are required for cleaning purposes.
- Do not use metal objects to remove encrustations or coffee deposits as they could scratch metal or plastic surfaces.

## Which items are dishwasher-safe



### Internal circuit of the machine


If the machine has not been used for more than 3-4 days, it is strongly recommend that before any further use, it should be switched on and rinsed 2 or 3 times, selecting the relative function “[Rinsing](#)”.



#### **Please note**

Water may find its way into the grounds container during the above cleaning procedure: this is quite normal.

### Bean hopper

Clean the bean hopper periodically. Proceed as follows:

1. Twist the bean hopper to the unlocked position  (fig. [42](#)) and leave it there until the end of the procedure: the machine is now in “Bean Switch” mode (fig. [43](#));
2. Select one of the modes available ([Choose the drink \(Use the beans left in the coffee grinder to make a drink\)](#); or [Grind & Empty \(Run a grinding cycle without preparing any drink, to empty the grinder of its contents\)](#)) and carry out the procedure;
3. Next, remove the bean hopper;

4. Remove the lid from the bean hopper. Empty out the hopper, transferring any remaining beans to another recipient;
5. Wipe the inside and the outside of the hopper clean with a soft moist cloth, removing all residual traces of coffee.
6. Clean the bean hopper socket on the machine, using the brush and a soft clean cloth. Remove powdery coffee residues with a vacuum cleaner.
7. Dry the bean hopper and the lid thoroughly, using a clean dry cloth or absorbent paper: make sure all the surfaces are completely dry.
8. Fill the hopper with coffee beans and close with the lid. To carry out the operation correctly, align the unlock symbol  with the notch on the adjuster ring (fig. 45) and, when inserted, twist the bean hopper into the locked position  (fig. 46).

### *Coffee grounds container*

When required by the machine, this must be emptied and cleaned. The machine cannot be used to make coffee until the grounds container has been cleaned. The machine will display the message indicating the need to empty the grounds container 72 hours after the first coffee has been prepared, even if the container is not full (for the 72 hours to be calculated correctly, the machine must never be disconnected from the mains power supply).

#### **Important! Danger of scalding**

If several milk-based drinks are prepared one after the other, the metal cup grille becomes hot. Wait for it to cool down before touching it, and handle from the front only.

To clean (with the machine on):

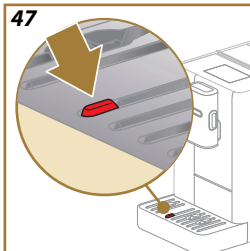
1. Remove the drip tray and coffee grounds container;
2. Empty the drip tray and the grounds container and clean them, taking care to remove all residues that may have collected on the bottom.
3. Reposition the drip tray in the machine, complete with grille and grounds container.

#### **Important!**

When removing the drip tray, the coffee grounds container must always be emptied, even if it has not filled up noticeably. If this is not done, it can happen that the grounds container will fill up more than expected when further coffees are prepared, causing the machine to clog.

### *Drip tray and drip tray grille*

The drip tray is fitted with a float level indicator (colour red) showing the amount of water it contains (fig. 47).



---

The drip tray must be emptied and cleaned before the indicator starts to project from the cup tray, otherwise the water may spill over the rim and damage the machine, the surface on which the machine is placed, or the surrounding area. To remove the drip tray, proceed as follows:

1. Remove the drip tray with all its components;
2. Separate the grounds container from its support: empty the grounds container;
3. Remove the cup grille and the drip tray grille and wash all components thoroughly: the cup grille cannot be put in a dishwasher;
4. Reposition the drip tray in the machine, complete with all its components.

***Important!***

When removing the drip tray, the coffee grounds container must always be emptied, even if it has not filled up noticeably. If this is not done, it can happen that the grounds container will fill up more than expected when further coffees are prepared, causing the machine to clog.

*Inside of the machine*

***Danger of electric shock!***

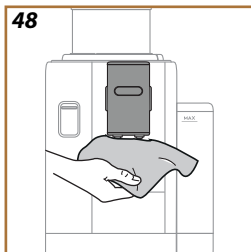
Before carrying out cleaning operations on internal parts, the machine must be turned off (see [“Turning the machine off”](#)) and unplugged from the mains power supply. Never immerse the machine in water

1. Check periodically (about once a month) that the inside of the machine (accessible after removing the drip tray) is not dirty.
2. Remove all residues with a vacuum cleaner

*Water tank*

Periodically (about once a month) and whenever the water softener filter is replaced, clean the water tank.

1. Take out the water tank, remove the water softener filter (if installed) and rinse with drinking water;
2. Empty the water tank and clean with warm water (40-50 °C approx), wiping if necessary with a clean, non-abrasive cloth. Rinse thoroughly under running water;
3. Reinstall the filter, if removed previously, then fill the water tank with fresh drinking water up to the MAX level and return it to the machine.
4. (Only if a water softener filter is installed) release 100ml of hot water to reactivate the filter.

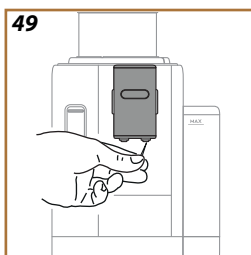


**Please note:**

If the machine has not been used for more than 3 days, clean the water tank as described above.

**Coffee spouts**

1. Clean the coffee spout regularly with a sponge or cloth (fig. 48);
2. Check that the holes in the coffee spout are not blocked. If necessary, remove coffee deposits with a toothpick (fig. 49).



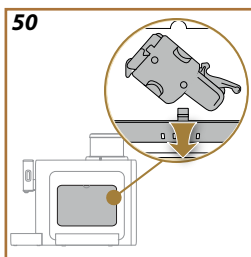
**Pre-ground coffee funnel**

Clean the removable pre-ground coffee funnel regularly (about once a month). Proceed as follows:

1. Switch off the machine (see [“Turning the machine off”](#));
2. Lift the lid of the accessories compartment (fig. 22).
3. Remove the scoop/brush;
4. Take out the removable funnel;
5. Wash the funnel under warm running water (40-50 °C approx) and dry with a clean cloth. The funnel can also be washed in a dishwasher, in which case a 50 °C cycle is suitable.
6. Return the funnel to its housing and put away the brush;
7. Close the lid.

**Important!**

After cleaning, check that no accessories have been left in the funnel. The presence of foreign matter in the funnel during operation could cause damage to the machine.

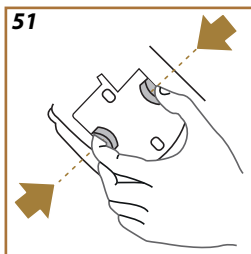


**Removable brewing unit**

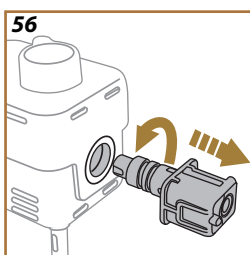
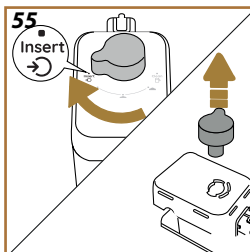
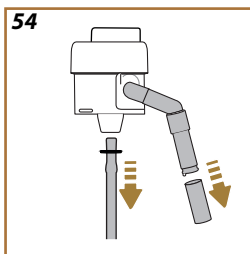
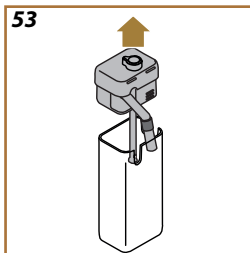
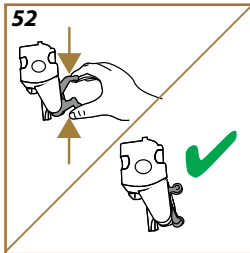
The brewing unit must be cleaned at least once a month.

**Important!**

The brewing unit cannot be removed while the machine is on.



1. Make sure the machine has run the shutdown procedure correctly (see heading [“Turning the machine off”](#));
2. Remove the water tank (fig. 3);
3. Open the brewing unit flap (fig. 50) on the right side of the machine, by releasing the top catch;
4. Press the two coloured release buttons inwards (fig. 51) at the same time pulling the brewing unit outwards;
5. Immerse the brewing unit in fresh drinking water for about 5 minutes, then rinse under the tap;



**Important!**

RINSE WITH WATER ONLY  
NO DETERGENTS - NO DISHWASHER

6. Do not use detergents when cleaning the brewing unit, as they could damage it.
7. Use the brush to remove any coffee residues left in the brewing unit housing, visible through the flap.
8. After cleaning, replace the brewing unit by sliding it into its housing, then apply pressure to the component until it clicks into place;

**Please note:**

If the brewing unit is difficult to fit, adapt it to the right size (before insertion) by applying pressure to the two levers (fig. 52).

9. Once inserted, make sure the two coloured buttons have snapped out;
10. Close the brewing unit flap and ensure it is firmly in place;
11. Reposition the water tank in the machine.

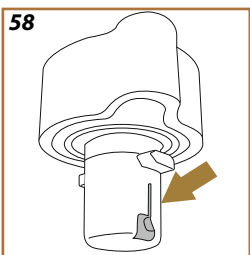
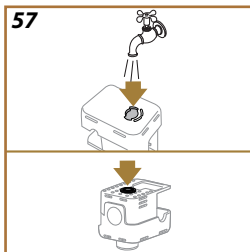
[WATCH THE VIDEO HERE](#)

*Thorough cleaning of milk carafe*



This operation will guarantee optimum results over time. Proceed as follows:

1. Remove the lid of the milk carafe (fig. 53);
2. Detach the milk spout, the milk spout extension and the milk intake tube (fig. 54);
3. Turn the froth adjustment dial clockwise to the "Insert" position (fig. 55) and pull off;
4. Turn the connector-coupling of the milk carafe anticlockwise and pull out (fig. 56).
5. Wash in a dishwasher (recommended) or by hand, as indicated below:
  - **In a dishwasher:** Rinse all components with warm drinking water (40-50 °C), then place them in the top basket of the dishwasher and run a programme at 50 °C, e.g. Eco Standard.
  - **By hand:** Rinse each component carefully with warm drinking water (40-50 °C) to ensure that all visible residues are removed: make sure the water passes through the holes (fig. 57). Immerse all components (including the milk container) in a solution of warm drinking water (40-50 °C) and washing-up liquid for at least 30 minutes. Rinse all components thoroughly with warm drinking water, rubbing them individually between fingers and thumbs.



6. Make sure there are no milk residues left in the cavity and the channel on the underside of the dial (fig. 58). If necessary, scrape with a toothpick;
7. Check that the intake tube and the outlet tube are not clogged with milk residues;
8. Dry the components with a clean dry cloth;
9. Reassemble all components of the milk carafe.

**Please note:**

The machine will give a reminder periodically of the need for thorough cleaning of the milk carafe, and indicate the full sequence of steps.




**Important!**

- Before use, read the instructions and the labelling on the descaler pack.
- Use only descaler supplied by De'Longhi. If unsuitable descaler is used, or descaling is not carried out properly and when required, the machine may develop faults not covered by the manufacturer's guarantee.
- Descaler can cause damage to delicate surfaces. If the product is accidentally spilt, dry immediately.


To descale	
Descaler	De'Longhi descaler
Container	Recommended capacity: 1.5 litres
Time	~30min

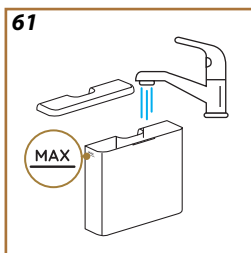
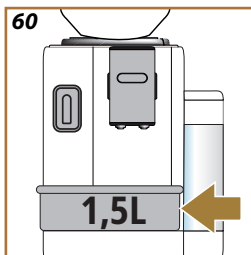
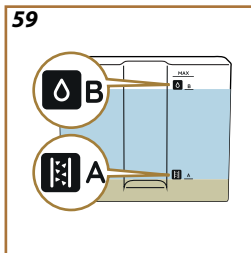
Descal the machine when the corresponding message appears on the homepage: if you already have the necessary De'Longhi descaler and want to proceed straight away, press "Yes" and follow the instructions step by step on the machine display.

If you have not yet procured your De'Longhi descaler, visit the [delonghi.com](http://delonghi.com) website, or, if the product QR code appears on the machine display, scan it with your smartphone.

To postpone descaling until later, press "Cancel": the homepage will continue to show the corresponding symbol  (C5) as a reminder that descaling still needs to be carried out. (The message reappears every time the machine is turned on).

To access the descaling menu:

1. Tap  (C8) on the homepage;
2. Scroll through the pages until the item "Descal" appears;
3. Press "Start" to initiate the guided descaling procedure (if the alarm is already active, respond with "Yes" and continue from step 6);
4. Certain models only: the machine displays a QR code with details of how and where to purchase the descaler, in the event that you may not have it ready; if this is the case, press '<' and 'x' to go back to the homepage and postpone descaling until later. If you already have the descaler, press "Next" to continue.
5. Press "Yes" to start: attach the hot water spout (D2), fig. 6) (this is kept in the accessories compartment (A2) on top of the machine);
6. Remove and empty the drip tray (A15) and the coffee grounds container (A10) (fig. 16), then reposition both in the machine and press "Next";



7. Remove the water tank (A7), lift the lid and (if installed) remove the filter (D8), then press "Next".
8. Empty the water tank completely and pour in the descaler, filling up to the level A marked on the inside of the tank (which corresponds to 100ml, or one single use pack of De'Longhi descaler), then add drinking water (one litre) up to level B (fig. 59). Reposition the water tank (with lid) in the machine and press "Start";
9. Place an empty container of at least 1.5 litres capacity under the spouts (A3) and (D2) (fig. 60). Press "Done" to start the procedure;

**Important! Danger of scalding**

Hot water containing acid flows out of the spouts. Accordingly, take care to avoid contact with this solution.

10. The descale programme starts and the descaler liquid comes out of the hot water spout and the coffee spout; a succession of rinses is performed automatically at set intervals to remove all the scale residues inside the coffee machine;

After a number of minutes, the machine completes the first step of the descaling cycle, which is followed by multiple rinse steps. Proceed as follows:

11. The machine is now ready to be rinsed out with cold water. Empty the container used to collect the descaler solution. Remove and empty the water tank, rinse thoroughly under running drinking water, then fill the tank with fresh water up to the MAX level (fig. 61) and return it to the machine. Press "Next"
12. Having emptied the container used previously to collect the descaler solution, reposition it under the spouts and press "Yes" to start the first rinse;
13. Hot water is released both from the hot water spout and from the coffee spout;
14. When the water in the tank has run out, empty the container used to collect the rinsing water;
15. Take out the water tank and reposition the water softener filter, if removed previously. Press "Next" to continue;
16. Fill the tank with fresh water to the MAX level, and return it to the machine; Press "Next" to continue;
17. Having emptied the container used previously to collect the descaler solution, reposition it under the spouts and press "Yes" to start another rinsing cycle;
18. When the water in the tank has run out, empty the container used to collect the rinsing water, then remove the drip tray and the grounds container, empty them and return them to the machine;

- 
19. Detach the water tank, top up to the max level, return it to the machine and press "Next";
  20. The descaling procedure is now complete: press "Ok";
  21. The machine performs a rapid preheat cycle and then goes back to the homepage.

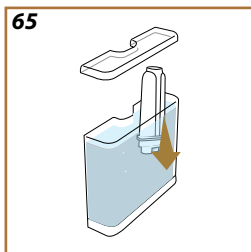
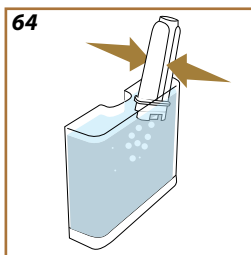
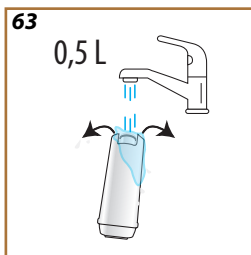
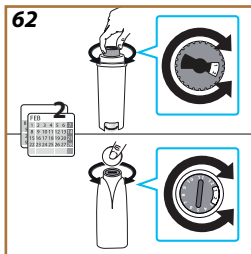
***Please note:***

- If the descaling cycle is not completed successfully (e.g., due to a power outage), when the machine is powered up again, it will ask to resume the cycle from the point at which it was interrupted.
- Water may find its way into the grounds container ([A10](#)) during the descale procedure. This is quite normal.
- If the water tank has not been refilled to the MAX level, the machine prompts for a third rinse to ensure that the descaler solution has been completely eliminated from the internal circuits. Before starting the rinse, remember to empty the drip tray.

To ensure the performance of the machine remains constant over time, it is advisable to install a De'Longhi water softener filter (D8).


For further information, visit [www.delonghi.com](http://www.delonghi.com).

**WATERFILTER**  EAN: 8004399327252



To ensure correct use of the filter, proceed as follows:

### Installing the filter

1. Tap  (C8) on the homepage;
2. Scroll through the pages until the item "Water filter" is displayed;
3. Press "Yes" to view the guided procedure;
4. Certain models only: the machine displays a QR code with details of how and where to purchase the De'Longhi water softener filter (D8) in the event that you may not have it ready; if this is the case, press '<' and 'x' to go back to the homepage and postpone installation until later. If you already have the filter, press "Next" to proceed;
5. Remove the filter from the packaging and turn the date indicator to view the next 2 months (fig. 62);

#### **Please note:**

The filter lasts about two months assuming normal use of the machine; if on the other hand the machine remains idle with the filter installed, it will not last more than three weeks, at most.


6. Press "Next" to continue;
7. To activate the filter, run tap water through the hole in the centre of the filter until water comes out of the openings at the side for more than a minute (fig. 63). Press "Next", "Back" or "X" to exit;
8. Remove the water tank (A7) from the machine and fill with cold drinking water; remove the lid of the tank and immerse the filter in the water, while squeezing the middle section 2 or 3 times so that the air bubbles can escape (fig. 64). Press "Next";
9. Finally, locate the filter in the special housing (fig. 65) and push fully home. Refit the lid to close the water tank; press "Next";
10. Return the tank to the machine and press "Yes";
11. Position an empty container of at least 0.5 litres capacity under the hot water spout (D2), and press "Yes";
12. The machine delivers hot water, then stops automatically. Press "OK" to go back to the homepage;
13. The filter is now active and the machine can be used.

---


### Replacing or removing the filter

Replace the filter when the corresponding message appears on the homepage: if you already have the De'Longhi water softener filter and want to proceed straight away, press "Yes" and follow the instructions step by step on the machine display.

If you have not yet procured the water softener filter, visit the delonghi.com website, or, if the product QR code appears on the machine display, scan it with your smartphone.

To postpone installation until later, press "Cancel": the homepage continues to show the corresponding symbol  (C4) as a reminder that the filter needs to be replaced or removed. (The message reappears every time the machine is turned on).

To replace, proceed as follows:

1. Tap  (C8) on the homepage;
2. Scroll through the pages until the item "Water filter" is displayed;
3. Press "Read more" to initiate the guided procedure (if the alarm is already active, respond with "Yes" and continue from step 6);
4. Certain models only: the machine displays a QR code with details of how and where to purchase the De'Longhi water softener filter (D8) in the event that you may not have it ready; if this is the case, press '<' and 'x' to go back to the homepage and postpone installation until later. If you already have the water softener filter, press "Next" to proceed;
5. Press "Yes" to continue;
6. Detach the water tank (A7), remove the lid and the spent filter, then press "Ok" (or "Done", if the alarm was already active and "Yes" was the response given at step 3) to remove the filter;
7. To replace the spent filter with a new part, select "Yes" and follow the procedure described above from step 5, otherwise select "No" to go back to the homepage.

#### **Please note:**

After two months (see date indicator), or after 3 weeks if the machine has not been used, the filter should be replaced even if the warning message has not yet been displayed.

## Rivelia Frequent and alarm messages

---

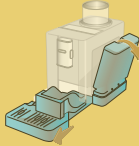
*Time to fill the water tank with fresh water and then insert it.*



- Insufficient water in the tank  
Remove the tank (fig. 3), fill the tank with fresh drinking water up to the MAX level (fig. 4), and return it to the machine
- Tank not correctly in place  
Fit the tank correctly

---

*Can you empty the drip tray and the grounds container? Fill water tank with fresh water and then insert it.*



- There is not enough water in the tank to make a drink, and the machine will soon be asking for the grounds container to be emptied  
The machine asks for both operations to be done straight away so that multiple drinks can be prepared, without interruption

---

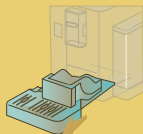
*Can you insert the brewing unit?*



- The brewing unit has not been fitted after cleaning  
Fit the brewing unit as described in heading [“Removable brewing unit”](#)

---

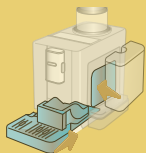
*Time to empty the grounds container and the drip tray. Even if not full, it is important to clear them out regularly*



- The grounds container is full.  
Clean as described in heading [“Coffee grounds container”](#)

---

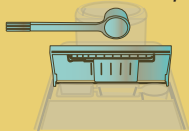
*Empty the grounds container and drip tray.  
Once done, if you still see this message,  
ensure the side door is closed.*



- Grounds container and/or drip tray not correctly in place or missing completely.  
Grounds container and/or the drip tray not correctly in place or missing completely.
- Side flap missing or not correctly in place.  
Position the flap or ensure it is properly shut. Empty the grounds container so the machine can continue counting correctly.

---

*Are you sure you have added the  
pre-ground coffee?  
Add it now One scoop only!*



- Preparation of a drink using pre-ground coffee has been selected, but the amount of pre-ground coffee inserted is not sufficient  
Check that the funnel is not blocked, then add one level scoop of pre-ground coffee, press "Ok" on the display and follow the instructions in heading "[Preparation with pre-ground coffee](#)".

---

*Oops! it looks like you're out of  
coffee beans. Time to add some  
more.*



- The coffee beans have run out.  
Fill the bean hopper and press "Done".

---

*The new settings have not been saved*

- In the course of customizing a drink (see heading [“My function”](#)), preparation has been deliberately interrupted by pressing “X”, or an alarm has been tripped.  
Press “OK” to go back to the homepage (C) and view the alarm that has caused the interruption. Follow the instructions corresponding to the alarm displayed (see heading [“Frequent and alarm messages”](#))

---

*Just doing a little cleaning.  
I'll be back in a few seconds*

- The machine has detected impurities in its internal circuits. Wait until the machine is ready for use again and reselect the required drink. Contact an Authorized Service Centre if the problem persists.



*I am unable to complete your drink.  
Please reduce the pre-ground coffee  
quantity and try again*

Ok

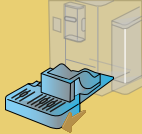
- Too much pre-ground coffee has been used  
Reduce the amount of pre-ground coffee (1 scoop, max). Press “OK” to go back to the homepage
- If the water softener filter is present, an air bubble may have been released inside the circuit, obstructing delivery.  
Press “Ok and release a little water (see heading [“Hot water”](#)) until the flow is regular. If the problem persists, remove the filter (see heading [“Replacing or removing the filter”](#))





---

*I am unable to complete your drink. Please reduce the pre-ground quantity, empty the grounds container and try again*



- Too much pre-ground coffee has been used  
Reduce the amount of pre-ground coffee (1 scoop, max). Carry out the cleaning procedure as described in heading [“Coffee grounds container”](#)



*Sorry, I am unable to complete your drink. Increase the grind setting by 1 (+1).*

Ok

- The beans are too finely ground, so that the coffee is delivered too slowly or not at all.  
Press “Ok”, “Next” and proceed to adjust the coffee grinder as appropriate (see heading [“Coffee grinder settings”](#)).



*Sorry, I am unable to complete your drink. Please reduce the intensity and try again*

Ok

- Too much coffee has been used.  
Select a milder “intensity” (see [“Customised coffee-based drinks”](#))  
Press “OK” to go back to the homepage.

---

*Remember to store the milk carafe in the fridge*




Ok

- A milk-based drink has been prepared and the milk carafe is still on the machine  
Remove the milk carafe and put it in the refrigerator.

---


*It's time to descale the machine. Scan the QR code if you don't have the descaler. Ready? (~30 min)*



Cancel Yes

- Indicates that the machine needs descaling. Proceed as described in heading [“Descaling”](#). If descaling is postponed until later, the corresponding symbol (C5) will remain alight on the homepage as a reminder that descaling still needs to be carried out.

---

  
*It's time to descale the machine. Ready? (~30 min)*

Cancel Yes

- Indicates that the machine needs descaling. Proceed as described in heading [“Descaling”](#). If descaling is postponed until later, the corresponding symbol (C5) will remain alight on the homepage as a reminder that descaling still needs to be carried out.


---

*Oops, the process has been interrupted*

- Descaling interrupted or not completed correctly. Press OK to continue (see heading [“Descaling”](#)).

---

*It's time to replace the water filter. Scan the QR code if you don't have a replacement. Ready?*

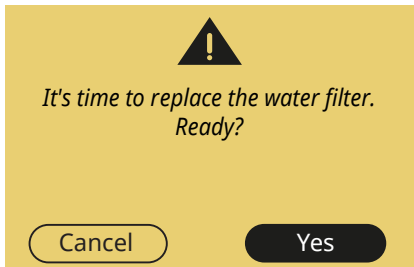


Cancel Yes

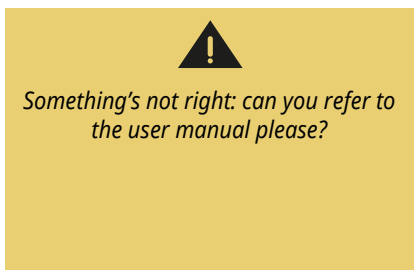
- Water softener filter spent. Proceed as described in heading [“Replacing or removing the filter”](#). If the operation is postponed until later, the corresponding symbol (C4) will remain alight on the homepage as a reminder that the filter needs to be replaced or removed.

---

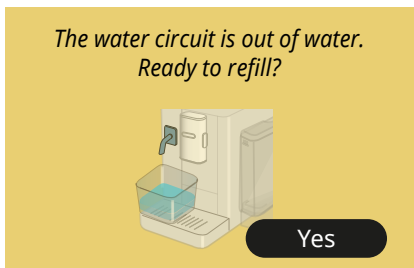




- Water softener filter spent. Proceed as described in heading "[Replacing or removing the filter](#)". If the operation is postponed until later, the corresponding symbol (C4) will remain alight on the homepage as a reminder that the filter needs to be replaced or removed.



- The inside of the machine is very dirty. Clean the inside of the machine thoroughly, as described in heading "[Description of the machine](#)". If the message is still displayed after cleaning, contact De'Longhi Customer Services and/or an approved Service Centre





- The water circuit is empty. Press "Yes" to fill the circuit: the flow of water will stop automatically. If the problem persists, make sure the water tank is correctly in place.
- A new water softener filter has been fitted. Make sure the instructions for installing the new filter have been followed correctly (see headings "[Installing the filter](#)" and "[Replacing or removing the filter](#)"). If the problem persists, remove the filter.





*Prepare at least 3 coffees before changing again*

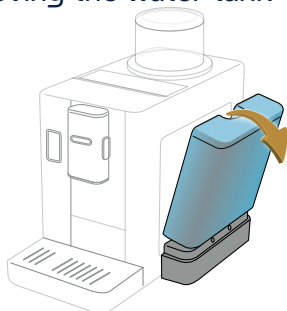
- The machine needs to brew 3 drinks before an adjustment can be changed using “Bean Adapt”  
Make at least 3 coffees, then proceed with the adjustment/ tuning.



-  Reminder that the filter must be replaced  
Replace the filter, or remove it, as described in heading [“Replacing or removing the filter”](#).
-  Reminder that the machine must be descaled.  
The descaling procedure needs to be carried out without delay, see heading [“Descaling”](#)

-  Reminder that the milk carafe needs to be cleaned.  
See heading [Cleaning the milk carafe after use](#)
-  Indicates that energy saving is activated.  
To deactivate energy saving, proceed as described in heading [“General”](#).

- Difficulty removing the water tank



*Tilt the tank away from the machine: once released, it will detach easily.*

- Steam comes out of the top after delivering coffee

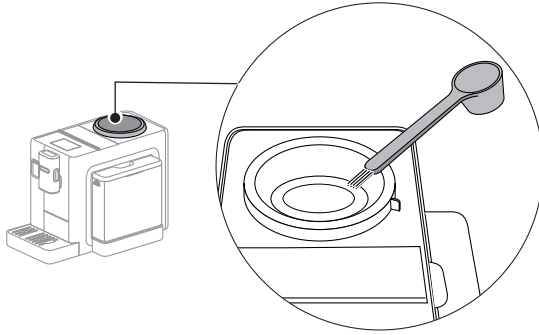



*This is water vapour that escapes from the dose of coffee utilized and is released automatically by way of the grounds container. This happens as part of normal and correct operation.*

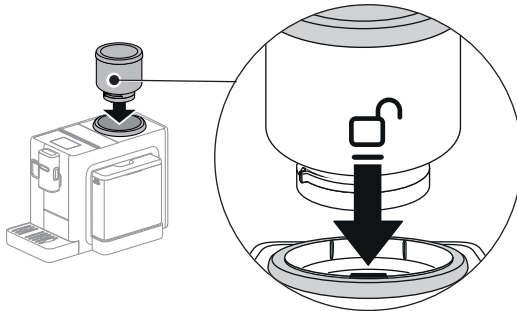
---


- Difficulty fitting the bean hopper

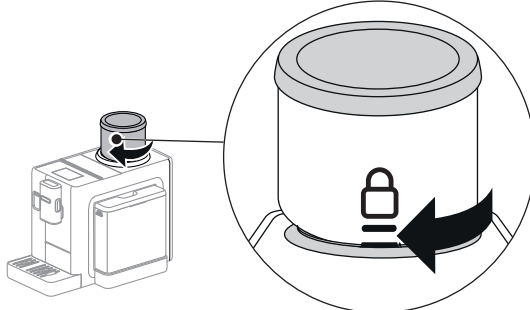
*Make sure that the bean hopper socket is clean and free of loose beans: use the brush to remove any residual traces of coffee.*



*Locate the bean hopper in the socket, being sure to align the unlock position  with the notch on the machine*



*Twist the bean hopper clockwise to the point at which the lock position  aligns with the notch on the machine*



---

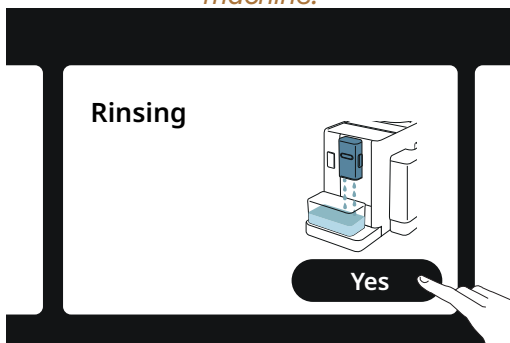
- Coffee not hot (1)

*It has been 2-3 minutes since the last preparation and the internal circuit of the machine has cooled down: in this situation, a hot rinse is advisable.*

*On the homepage, press  to enter the settings menu:*



*Scroll through the pages until the item “Rinse” is displayed and press “Yes” to start the procedure: after a few seconds, hot water will begin flowing to clean and heat up the internal circuit of the machine.*



---

- Coffee not hot (2)

*The temperature set for preparation of the coffee is too low.*

*Select a higher temperature as indicated below:*

*On the homepage, press  to enter the settings menu:*



*Scroll through the pages until the item “Coffee temperature” is displayed and press “Set” to change the temperature.*



*Select a higher temperature (Medium or Max).*

- Coffee not hot (3)




*Descaling is required: proceed as illustrated in the heading*

[Descaling.](#)

*This done, check that the water hardness setting is right for the water provided by your local supplier (see [Check the hardness of the water](#) and [Setting water hardness](#)).*



- Milk presents large bubbles, or splashes from the milk spout, or is under-frothed (1).

LatteCrema HOT	
Cow's milk	
Whole (fat >3,5%)	✓
Semi-skimmed (fat between 1.5 and 1.8%)	
Skimmed (fat <0.5%)	
Vegetable drinks	
 Soya	✓
 Almond	✓
 Oatmeal	✓

*Use cow's milk or vegetable drinks at refrigerator temperature (about 5° C).*

*If the result is still not as expected, try changing the brand of milk.*

*In the case of vegetable drinks, use "Barista" versions for best results.*

- Milk presents large bubbles, or splashes from the milk spout, or is under-frothed (2).

*Clean the lid of the milk carafe thoroughly, as indicated in headings "[Cleaning the milk carafe after use](#)" and "[Thorough cleaning of milk carafe](#)".*

## Rivelia Technical data

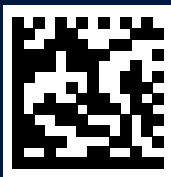
---

Voltage:	220-240 V~ 50-60 Hz max. 10 A
Power:	1450 W
Pressure:	1.9 MPa (19 bar)
Water tank capacity:	1.4l
Size LxDxH:	250x430x390 mm
Cord length:	1200 mm
Weight:	11 kg
Bean hopper capacity:	250 g

De'Longhi reserves the right to change the technical specification and styling of its products at any time, while maintaining their functionality and quality unaffected.

### *Tips for Energy Saving*

- To reduce energy consumption, remove the milk carafe after one or more drinks have been delivered;
- Set auto-off to 15 minutes (see heading "[Auto-off](#)");
- Activate Energy Saving (see heading "[General](#)");
- Always carry out the descaling cycle when prompted by the machine.



57132C8962\_02\_0525