
ECAM32X.6Y - 32X.7Y

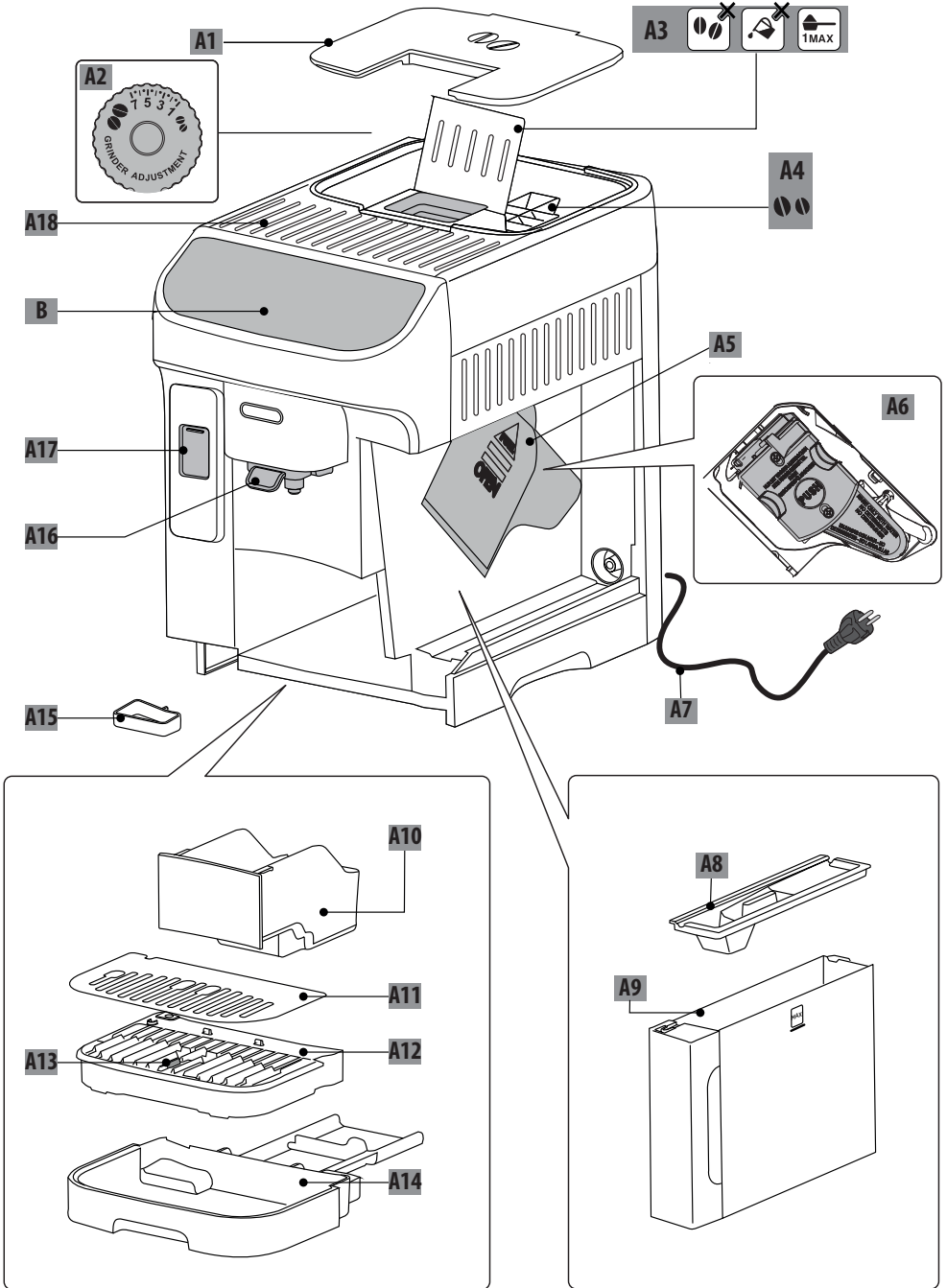
MAGNIFICA
— PLUS —

BEAN TO CUP ESPRESSO AND
CAPPUCCINO MACHINE
Instruction for Use



DeLonghi

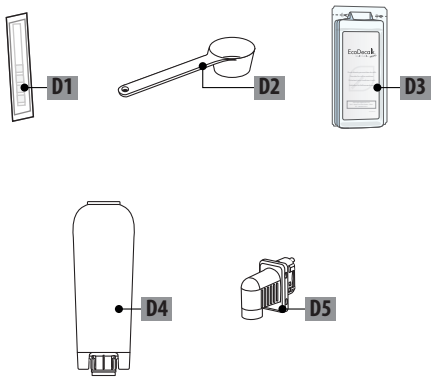
A



B-C

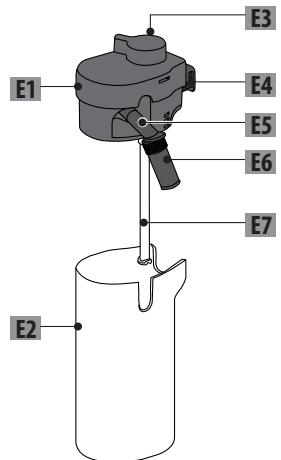


D**



E

**LatteCrema
HOT**



CONTENTS

1. INTRODUCTION	5
1.1 Letters in brackets.....	5
1.2 Troubleshooting and repairs.....	5
2. DESCRIPTION	5
2.1 Description of the appliance (A).....	5
2.2 Description of control panel (B).....	5
2.3 Description of homepage (main screen) (C) ..	5
2.4 Description of accessories (D) (**number and type differ according to model).....	5
2.5 Description of milk carafe (E).....	5
3. OPERATING THE APPLIANCE FOR THE FIRST TIME	5
4. TURNING THE MACHINE ON	7
5. TURNING THE APPLIANCE OFF	8
5.1 Switching off for extended periods:	8
6. MENU SETTINGS	8
6.1 Rinsing	8
6.2 Descaling	8
6.3 Water filter	8
6.4 General	8
6.5 Auto-off	9
6.6 Coffee temperature	9
6.7 Statistics.....	9
6.8 Languages.....	9
6.9 Coffee mill settings	9
6.10 Water hardness	9
6.11 Empty circuit	9
6.12 Default values	10
7. SELECTION OF DRINKS	10
8. PREPARATION OF COFFEE DRINKS	10
8.1 Prepare the machine to make coffee drinks.....	10
8.2 Directly selected coffee drinks.....	10
8.3 Customization of the drink	11
8.4 Making drinks using pre-ground coffee.....	11
8.5 Extra shot.....	12
8.6 General indications for making coffee-based drinks	12
8.7 Tips for a hotter coffee.....	13
9. MAKING CAPPUCCINOS AND MILK BASED COFFEES	13
9.1 Preparing the milk carafe (E).....	13
9.2 What milk to use?	13
9.3 Filling and attaching the milk carafe.....	13
9.4 Adjusting the amount of froth.....	13
9.5 Making milk-based drinks.....	14
9.6 Cleaning the milk carafe after use	14
10. PREPARING HOT WATER	14
11. “MY” FUNCTION (hot drinks only)	14
12. SELECTING YOUR PERSONAL PROFILE	15
13. CLEANING	15
13.1 Cleaning the machine	15
13.2 Cleaning the internal circuit	16
13.3 Cleaning the coffee grounds container.....	16
13.4 Cleaning the drip tray and drip tray grille....	16
13.5 Cleaning the inside of the machine	17
13.6 Cleaning the water tank.....	17
13.7 Cleaning the pre-ground coffee funnel	17
13.8 Cleaning the infuser	17
13.9 Cleaning the control panel (B).....	18
13.10 Cleaning the milk carafe (E)	18
14. DESCALING	19
15. WATER SOFTENER FILTER	20
15.1 Installing the filter	20
15.2 Replacing or removing the filter.....	20
16. TECHNICAL DATA	20
16.1 Tips for Energy Saving	20
17. MESSAGES SHOWN ON THE DISPLAY	21
18. TROUBLESHOOTING	23

Before using the appliance for the first time, be sure to read the safety warnings.

1. INTRODUCTION

Take a few minutes to read these Instructions for Use. This will avoid all risks and damage to the appliance.

1.1 Letters in brackets

The letters in brackets refer to the description of the appliance on pages 2- 3.

1.2 Troubleshooting and repairs

In the event of problems, first try and resolve them by reading the information given in sections “17. Messages shown on the display” and “18. Troubleshooting”.

If this does not resolve the problem or further information is required, consult the customer services department at the numbers indicated on the website www.delonghi.com.

If repairs are required, contact De’Longhi customer services only. Addresses can be found on the website www.delonghi.com.

2. DESCRIPTION

2.1 Description of the appliance (A)





- A1. Beans container lid
- A2. Coffee grinder adjustment dial
- A3. Pre-ground coffee funnel flap
- A4. Beans container
- A5. Infuser flap
- A6. Removable infuser
- A7. Power cord
- A8. Water tank lid
- A9. Water tank
- A10. Coffee grounds container
- A11. Cup tray
- A12. Drip tray grille
- A13. Drip tray water level indicator
- A14. Drip tray
- A15. Condensate tray
- A16. Height-adjustable coffee spout
- A17. Accessories connector
- A18. Cup shelf

2.2 Description of control panel (B)

- B1. ON/standby button
- B2. “Coffee” drinks menu with Leds
- B3. “Milk” drinks menu with Leds
- B4. Profile selection button

2.3 Description of homepage (main screen) (C)

- C1. Customizable profiles (see “12. Selecting your personal profile”)

- C2.  Filter spent indicator
- C3.  Descaling required indicator
- C4.  Milk carafe cleaning required indicator
- C5.  Energy saving ON indicator
- C6. Appliance settings menu
- C7. Selectable drinks (direct selection) (*number and type of drinks differ according to models)
- C8. Drink settings customization bar

2.4 Description of accessories (D) (**number and type differ according to model)

- D1. “Total Hardness Test” strip
- D2. Pre-ground coffee measure
- D3. Descaler
- D4. Water softener filter
- D5. Hot water spout

2.5 Description of milk carafe (E)

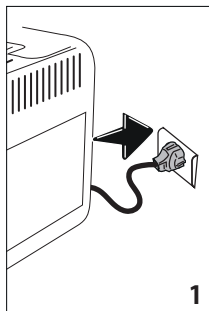
LatteCrema
HOT 

- E1. Milk carafe lid
- E2. Milk container
- E3. Froth adjustment/Clean dial
- E4. Milk carafe connector (removable for cleaning)
- E5. Milk spout (height-adjustable)
- E6. Milk spout extension
- E7. Milk intake tube (silicone)

3. OPERATING THE APPLIANCE FOR THE FIRST TIME

Please note:

- When using the machine for the first time, all components that make contact with water or milk should be rinsed with hot water. It is advisable to wash the milk carafe (E) (see section “13.10 Cleaning the milk carafe (E)”).
 - Any traces of coffee that may be found in the mill are left by the factory tests carried out on the machine before it goes on sale — evidence of the meticulous care we have for the product.
 - The first time the machine is used, the water circuit will be empty and the appliance could be very noisy. The noise becomes less as the circuit fills.
 - When starting the machine for the first time, make sure the water spout (D5) is fitted.
1. Connect the appliance to the mains supply (fig. 1).



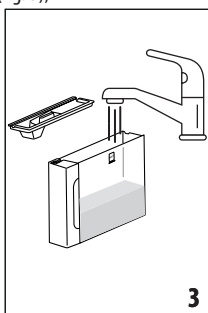
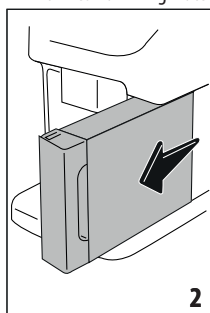
Select the language

- Press the flag corresponding to the desired language and confirm the selection by pressing "Done".

Now follow the instructions indicated on the display of the appliance:

Fill the water tank

- Remove the water tank (A9) (fig. 2), and fill to the MAX line with fresh drinking water (fig. 3);



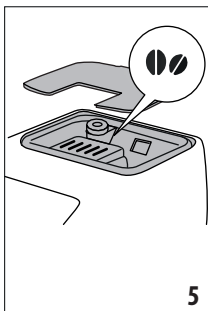
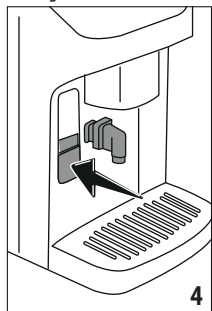
- Reposition the tank, then confirm by pressing "Next";

Fit the hot water spout

- Lift the flap and fit the hot water spout (D5) to the accessories connector (A17) (fig.4): Press "Next";

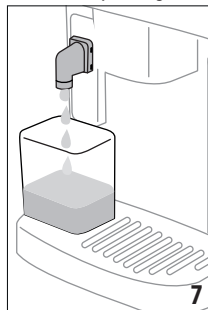
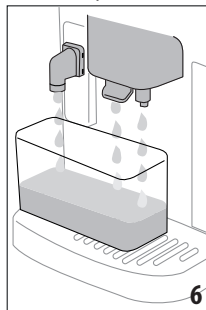
Fill the beans container

- Fill the beans container (A4) (fig. 5), then confirm by pressing "Next";



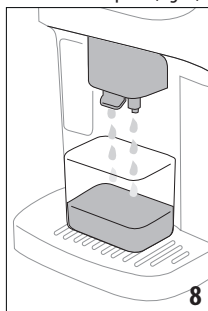
Filling the water circuit and rinsing

- Position a container of at least 200 ml capacity under the coffee spout (A16) and the hot water spout (fig. 6);



- Press "Yes" to fill the water circuit: the appliance delivers water from the hot water spout (fig. 7);

- At the end of delivery, the machine proceeds with heating and terminates the procedure with a rinse cycle, delivering hot water from the coffee spout (fig. 8).



Please note:

- The first time the appliance is used, it will be necessary to make 4-5 cappuccinos before the drink in the cup tastes as it should.
- The first time the machine is used, the water circuit will be empty and the appliance could be very noisy. The noise becomes less as the circuit fills.

Measuring water hardness

The descaling alarm is displayed after a period of time established according to water hardness. The machine can also be programmed according to the actual hardness of the local water supply, so that the descaling procedure will be required less frequently. Accordingly, it is advisable to set the correct value without delay, following the machine's step by step guide:

- Take out the test strip (D1): press "Start" to proceed.
- Immerse the strip completely in a glass of water for about one second.
- Remove the strip from the water and shake lightly. Press "Next".

- After about a minute, 1, 2, 3 or 4 red squares appear, depending on the hardness of the water.

Setting water hardness

Select the water hardness level on the display according to the result of the measurement procedure described above, and press "Ok".

The water hardness selected will be saved in the machine settings.

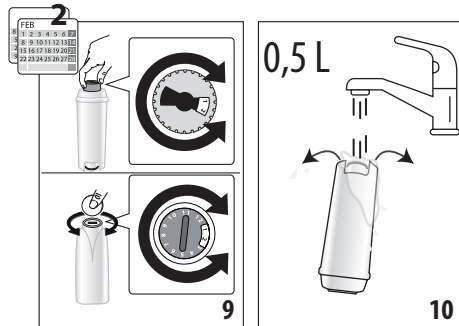
Please note:

The water hardness can be changed directly from the settings menu (see "6.10 Water hardness").

Installing the water softener filter

Certain models are fitted with a water softener filter (D4). If this is not the case with your model, you are recommended to purchase one from De'Longhi Customer Services.

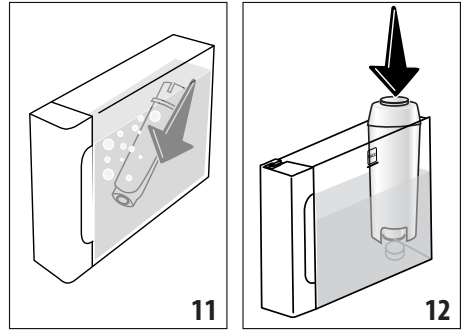
- The appliance prompts for installation of the filter: press "Start" to proceed (to put the operation off, on the other hand, press "Later").
- Remove the water tank (A9) (fig. 2), fill to the MAX line with fresh drinking water (fig. 3) and press "Next".
- Remove the filter from the packaging and turn the date indicator so that it shows the next 2 months (fig. 9); Press "Next".



Please note:

The filter lasts about two months assuming normal use of the machine; if on the other hand the machine remains idle with the filter installed, it will not last more than three weeks, at most.


- To activate the filter, run tap water through the hole in the centre of the filter until water comes out of the openings at the side for more than a minute (fig. 10); Press "Next".
- Insert the filter in the water tank and immerse it completely for about ten seconds, angling and pressing it lightly so that the air bubbles can escape (fig. 11). Press "Next".
- Insert the filter in the filter housing (fig. 12) and press it fully home; press "Next";



- Close the tank with the lid (A8);
- Reposition the water tank in the machine and press "Next".
- Position an empty container of at least 0.5 litres capacity under the hot water spout (fig. 7) and press "Ok" to activate the filter;
- The appliance delivers hot water, then stops automatically.
- The filter is now active and the machine can be used. Remove the water tank, and refill it with fresh drinking water.


Now that all the technical aspects have been covered, press "Start" to get to know the machine.

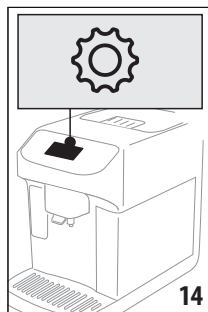
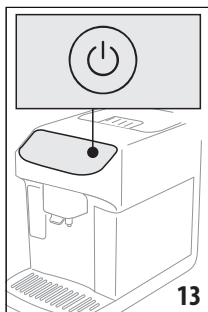
Setting profiles

- Select the number of persons who will be using the machine. Press "Next".
- The machine creates a profile automatically for each user: to customize the profile, press  (press the "Change" or "Profile" button). Having made the desired changes, press "Save".
- Press "Next".
- Press "Start" to run a video tutorial.
- At the end of the video, press "Start": the machine is ready for use.

4. TURNING THE MACHINE ON

Please note:

- Each time the appliance is turned on, it performs an automatic preheat and rinse cycle which cannot be interrupted. The appliance is not ready for use until the cycle has been completed.
- To turn the appliance on, press  (B1)(fig. 13): the appliance will switch on



2. Once preheated to a preset temperature, a rinse cycle takes place and hot water flows from the coffee spouts (A16); in addition to heating the boiler, this has the effect of heating the internal circuits by circulating hot water through them.


5. TURNING THE APPLIANCE OFF

Whenever the machine is turned off after being used to make coffee, it performs an automatic rinse cycle.

1. To turn the appliance off, press  (B1) (fig. 13).
2. If envisaged, the appliance performs a rinse cycle, delivering hot water from the coffee spouts(A16), following which it will switch off (stand-by).

5.1 Switching off for extended periods:

If the machine is not going to be used for any length of time (e.g. before going on holiday):

- switch off by pressing  (B1) (fig. 13).
- empty out and clean the grounds container (A10) and the water tank (A9);
- remove the plug (A7) from the power socket. (Important! Never unplug the machine while it is still switched on)

Please note:

When turning the machine on again, fill the water tank and, before making any kind of drink, run 3 rinse cycles as indicated in section "6.1 Rinsing"

6. MENU SETTINGS

6.1 Rinsing

Using this function, hot water can be delivered from the coffee spouts (A16) (and, if fitted, the hot water spout (D5)) to clean and heat the appliance's internal circuit.

Place a container of at least 100ml capacity under the spouts (fig. 6).

To activate the function:

1. Press the settings menu (C6) (fig. 14);

2. Select the item "Rinse";
3. Press "Yes" to start the rinse cycle: after a few seconds, hot water is delivered to clean and heat the internal circuit of the machine (fig. 7-8);
4. To stop rinsing, press "Stop" or wait for rinsing to stop automatically.

Please note:

- If the appliance is not used for more than 3-4 days, it is highly advisable, when turning it on again, to run 2-3 rinses before use;
- Water may find its way into the grounds container (A10) during the rinse procedure: this is quite normal.


6.2 Descaling

For instructions on descaling, see section "14. Descaling".

6.3 Water filter

For instructions on the filter (D4), see section "15. Water softener filter".

6.4 General

1. Press the settings menu (C6) (fig. 14);
2. Scroll through the menu pages until "General" is displayed; In this section of the menu, the following functions can be activated or deactivated at a simple touch:
 - "Audible warning": if activated, the appliance beeps whenever an operation is performed.
 - "Energy saving": use this function to activate or deactivate energy saving mode. When activated, the function reduces energy consumption in compliance with European regulations.  is displayed on the homepage to show it is active.
3. Press "X" to save the new selections and go back to the homepage (C).

The screen also shows the serial number of the machine, which is an essential item of information should it be necessary for customer service to identify the machine precisely.

6.5 Auto-off

Auto-off can be set so that if the appliance is not being used, it will switch off after 15 or 30 minutes or after 1 or 3 hours have elapsed.

To programme Auto-off, proceed as follows:

1. Press the settings menu (C6) (fig. 14);
2. Scroll through the menu pages until "Set Auto-off" is displayed;
3. Select the desired time interval (15 or 30 minutes, or 1 or 3 hours).
4. Press "X" to save the new selection and go back to the homepage (C).

6.6 Coffee temperature

To change the temperature of the water used to make coffee, proceed as follows:

1. Press the settings menu (C6) (fig. 14);
2. Scroll through the menu pages until "Coffee temperature" is displayed;
3. Press "Set";
4. Select the required temperature from those suggested;
5. Press "<" to go back to the settings menu.

Please note:

The effect of varying the temperature is most noticeable with long drinks.

6.7 Statistics

This displays statistics relating to the machine. To view the statistics:

1. Press the settings menu (C6) (fig. 14);
2. Scroll through the menu pages until "Statistics" is displayed along with the main statistical data: to view more data, press "Read more";
3. Press "<" to go back to the settings menu.

6.8 Languages

To change the language on the homepage, proceed as follows:

1. Press the settings menu (C6) (fig. 14);
2. Scroll through the menu pages until "Languages" is displayed;
3. Press "Set";
4. Press the flag corresponding to the desired language (scroll through the pages to see all the languages available). the display updates immediately and shows the selected language;
5. Press "<" to go back to the settings menu.

6.9 Coffee mill settings

The machine offers a tutorial on how to adjust the grinding and ensure the best results:

1. Press the settings menu (C6) (fig. 14);

2. Scroll through the menu pages until the item "Grinding adjustment" is displayed;
3. Press "Read more" to see the tutorial on how the coffee mill is adjusted.

Please note:

- After completing the above procedure, at least 3 coffees should be made before making any further adjustment. If coffee delivery is still not correct, repeat the procedure.
- The adjustment dial (A2) must be turned only when the coffee mill is in operation, during the initial step of preparing the coffee.

6.10 Water hardness

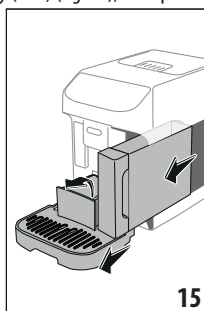
To change the default water hardness setting when the machine is used for the first time, proceed as follows:

1. Repeat the hardness test as indicated in the section "Measuring water hardness";
2. Press the settings menu (C6) (fig. 14);
3. Scroll through the menu pages until the item "Water hardness" is displayed.
4. Press "Set".
5. Select the water hardness level on the display according to the result of the test: the new setting will be stored.
6. Press "<" to go back to the settings menu.

6.11 Empty circuit

To avoid the water in the circuit freezing if the appliance is to be left idle for an extended period, or before taking it to a service centre, it is advisable to drain the water circuit.

1. Press the settings menu (C6) (fig. 14);
2. Scroll through the menu pages until "Empty circuit" is displayed;
3. Press "Yes" to start the guided procedure;
4. Remove, empty and refit the grounds container (A10) and the drip tray (A14) (fig. 15), then press "Next";



5. Attach the spout (D5) to the connector (A17) (fig. 4);
6. Position a container of 200 ml capacity under the spouts (fig. 6). Press "Next";
7. The appliance performs a rinse cycle, releasing hot water from the spouts;

8. Once the rinse has been completed, remove the water tank (A9) (fig. 2) and empty it;
 9. Remove the water softener filter (if installed) (D4) from the water tank, and press "Next";
 10. Reposition the water tank (empty) and press "Yes";
 11. Wait for the machine to begin emptying the circuit; (Caution: beware of hot water coming from the spouts!). As the water circuit empties, the appliance could become noisier. This is part of normal operation.
 12. Once the circuit has emptied, remove, empty and reposition the drip tray, and press "Yes";
 13. Press "Ok": the appliance switches off (standby).
- The next time the appliance is turned on, follow the instructions in section "3. Operating the appliance for the first time".

6.12 Default values

This function resets all menu settings and all user customizations, restoring the factory default values (with the exception of the language, which remains as set, and the statistics).

1. Press the settings menu (C6) (fig. 14);
2. Scroll through the menu pages until the item "Default values" is displayed;
3. Press "Read more";
4. Select the items to be reset: machine or individual profile, then press "Next";
5. Follow the instructions until prompted to confirm, and press "OK": the homepage (C) will reappear.

Please note:

Whenever the machine (not the individual profile) is reset to the factory default values, the introductory tutorial will reappear.

7. SELECTION OF DRINKS

Your machine can be used to make a great variety of drinks*.

(*Number and type of drinks differ according to model).

	Hot	Cold
Espresso	✓	✗
2X Espresso	✓	✗
Coffee	✓	✓
Doppio+	✓	✗
Long	✓	✗
Americano	✓	✓
Cappuccino	✓	✗
Latte Macchiato	✓	✗
		→

	Hot	Cold
Caffelatte	✓	✗
Cappuccino Mix	✓	✗
Espresso Macchiato	✓	✗
Flat White	✓	✗
Cappuccino+	✓	✗
Cortado	✓	✗
Milk	✓	✗
Hot water	✓	✗

From the panel, access the type of drink desired (Milk (B3): milk based drinks; Coffee (B2): coffee based drinks), ensuring the machine is equipped with the necessary accessories.

8. PREPARATION OF COFFEE DRINKS

8.1 Prepare the machine to make coffee drinks **Important!**

Do not use green, caramelized or candied coffee beans as they could stick to the coffee mill and render it unusable.

1. Place 1 or 2 cups under the coffee spout (A16);
2. Bring the spout down as close as possible to the cup (fig. 16). This makes a creamier coffee.



8.2 Directly selected coffee drinks

1. Press the image on the homepage (C) that corresponds to the desired coffee (C1) (e.g. Espresso, fig. 17);



2. **Hot coffee drink:** the machine proceeds with preparation.

Cold coffee drink:

- make the selection between “Iced” or “Extra iced” drink: press “Next”;
- depending on the selection made, the machine will suggest the amount of ice to add to the drink before proceeding with preparation: place the recommended number of ice cubes in the glass (fig. 18), and press “Deliver”.



- The machine proceeds with the preparation.

A description of each single step (grinding, delivery of coffee) appears on the display.

Once the preparation has been completed, the machine is ready for use again.

8.3 Customization of the drink

To make coffee-based drinks with customised parameters, proceed as follows:

1. Press the customization bar (C8) at the bottom of the image corresponding to the desired coffee (e.g. espresso, fig. 19): the parameters that can be selected according to personal preference appear on the display:

Quantity	
Intensity	

2. **Hot coffee drink:** After setting the parameters, press “Deliver”: the machine proceeds with preparation and a description of each single step (grinding, delivery of coffee) appears on the display;

Cold coffee drink: After setting the parameters, press “Start” and proceed as follows:

- make the selection between “Iced” or “Extra iced” drink: press “Next”;
- depending on the selection made, the machine will suggest the amount of ice to add to the drink before proceeding with preparation: place the recommended number of ice cubes in the glass (fig. 18), and press “Deliver”.
- The appliance proceeds with preparation and a description of each single step (grinding, delivery of coffee) appears on the display.

3. When delivery has ended, press “Save” to store the new settings or “Cancel” to retain the previous parameters.

Please note:

If saved, the new settings will be stored ONLY in the selected profile.


4. Press “X” to go back to the homepage (C).
The appliance is ready to be used again.

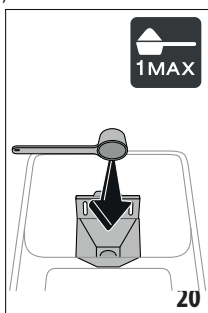
8.4 Making drinks using pre-ground coffee

Important!

- Never add pre-ground coffee when the machine is off, or it could spread through and soil the inside of the machine. This could damage the machine.
- Never use more than 1 level measure (D2) as it could soil the inside of the coffee machine or block the funnel (A3).

When using pre-ground coffee, only one cup can be made at a time.

- Making **Long** coffee: halfway through preparation, when prompted by the machine, add one level measure of pre-ground coffee and press "OK".
 - Certain drinks cannot be prepared using pre-ground coffee: **Doppio+**, **2x Espresso**, **Cappuccino+**
1. Press the customization bar (C8) at the bottom of the image corresponding to the desired coffee (e.g. espresso, fig. 19): the parameters that can be selected according to personal preference appear on the display:
 2. Select the quantity, and select pre-ground coffee  ;
 3. Press "Deliver";
 4. Lift the pre-ground coffee funnel lid, make sure the funnel (A3) is not blocked, then add one level measure (D2) of pre-ground coffee (fig. 20) and press "OK" to proceed with preparation;



5. The machine proceeds with preparation and a description of each single step (water heating, delivery of coffee) appears on the display.

Once the preparation has been completed, the machine is ready for use again.

8.5 Extra shot

In certain cases, another Espresso (30 cc) can be added to give an extra 'kick'. The Extra Shot option is available with the following drinks*:

(*Number and type of drinks differ according to model).


Espresso	✓
Espresso Macchiato	✓
Long	✓
Coffee (hot only)	✓
Doppio+	✓
Americano (hot only)	✓
Cappuccino	✓
→	

Latte Macchiato	✓
Caffelatte	✓
Cappuccino Mix	✓
Cortado	✓
Flat White	✓
Cappuccino+	✓


1. Press the customization bar (C8) at the bottom of the image corresponding to the desired coffee (e.g. espresso, fig. 19).
2. Press "Extra Shot", making sure that cup being used is big enough, then press "Ok".
3. Select the desired quantity and intensity. Press "Deliver".
4. Press "Ok" to confirm.
5. The machine proceeds with preparation and a description of each single step (grinding, delivery of coffee + extra grinding and delivery) appears on the display.
6. When done, press "Save" to store the new settings, or "Cancel" to retain the previous parameters.

The appliance is ready to be used again.

Please note:

- If saved, the new settings will be stored ONLY in the selected profile.
- If Extra Shot has been selected, it will not be possible to change the quantity setting or use pre-ground coffee.
- When "Extra Shot" is selected, the  symbol appears on the customization bar.

8.6 General indications for making coffee-based drinks

- When the machine is making coffee, delivery can be interrupted at any moment by pressing "Stop" or "Cancel".
- As soon as delivery has ended, the quantity of coffee can be increased if so desired simply by pressing "Extra": once the required quantity has been reached, press  "Stop" or "Cancel".
- Certain alarm messages could be displayed while using the machine ("Fill tank with fresh water up to MAX level", etc.); their meaning is explained in section "17. Messages shown on the display".
- If the coffee emerges drop-by-drop, too weak and not creamy enough or too cold, refer to the tutorial on adjusting the coffee mill (see heading "6.9 Coffee mill settings") and section "18. Troubleshooting".
- If "Energy Saving" mode is enabled, there may be a few seconds delay before the first coffee is delivered.

8.7 Tips for a hotter coffee

To make a hotter coffee, proceed as follows:

- run a rinse cycle before brewing coffee (heading “6.1 Rinsing” in the settings menu);
- warm the cups with hot water using the hot water function (see section “10. Preparing hot water”);
- increase the coffee temperature setting (section “6.6 Coffee temperature” in the settings menu).

9. MAKING CAPPUCCINOS AND MILK BASED COFFEES

9.1 Preparing the milk carafe (E)

Please note:

To avoid the preparation of milk with insufficient froth or large bubbles, always clean the milk carafe as described in headings “9.6 Cleaning the milk carafe after use” and “13.10 Cleaning the milk carafe (E)”.

9.2 What milk to use?

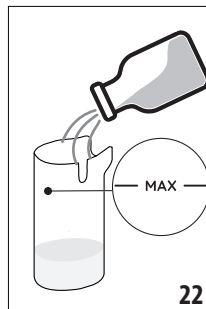
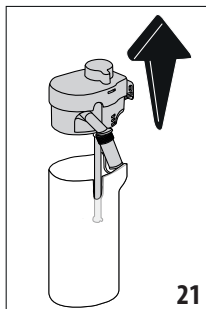
The quality of the froth will vary depending on:

- the temperature of the milk or vegetable drink used (for best results, always use milk or vegetable drink straight from the fridge, 5 °C);
- type of milk or vegetable drink;
- the brand used;
- ingredients and nutritional values.

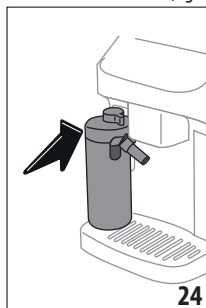
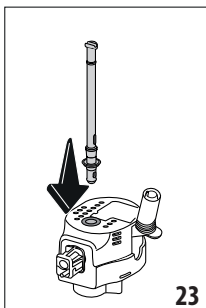
LatteCrema HOT	
Cow's milk	
Whole (fat >3,5%)	✓
Semi-skimmed (fat between 1.5 and 1.8%)	
Skimmed (fat <0.5%)	
Vegetable drinks	
Soya	✓
Almond	✓
Oatmeal	✓

9.3 Filling and attaching the milk carafe

1. Lift the lid (E1) (fig. 21);



2. Fill the milk container (E2) with a suitable quantity of milk, not exceeding the MAX level marked on the container (fig. 22).
3. Make sure the milk intake tube (E7) is secured correctly to the socket on the underside of the milk carafe lid (fig. 23);




4. Reposition the lid on the milk container;
5. Raise the flap, then attach the carafe to the connector (A17) and push fully home (fig. 24): the machine emits a beep (if the beep function is enabled);
6. Place a sufficiently large cup under the coffee spouts (A16) and under the milk spout (E5). The milk spout — only the milk spout — can be made longer by adjusting the extension (E6);
7. Select the desired drink as described in the following sections.

Please note:

If "Energy Saving" mode is enabled (see section “6.4 General”), there may be a few seconds delay before the drink is delivered.

9.4 Adjusting the amount of froth

Turn the froth adjustment dial (E3) to select the amount of milk froth delivered when making milk based drinks.

Dial position	Recommended for . . .
 Delicate	<ul style="list-style-type: none"> • Caffe latte • Hot milk (not frothed)

 Creamy	<ul style="list-style-type: none"> • Latte Macchiato • Flat White • Cortado
 Dense	<ul style="list-style-type: none"> • Cappuccino • Cappuccino Mix • Espresso Macchiato • Cappuccino+ • Hot milk (frothed)

9.5 Making milk-based drinks

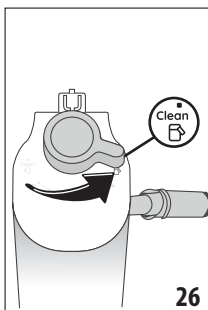
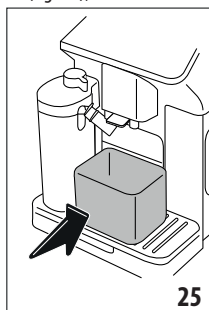
On the homepage (C), press directly on the image corresponding to the required drink (C7).

As in the case of coffee drinks, a drink can be customized by pressing on the customization bar (C8) at the bottom of the image on the homepage.

9.6 Cleaning the milk carafe after use

After each delivery of a milk drink, the machine will prompt the user to run the CLEAN function to clean the milk carafe lid (E1). To start cleaning, proceed as follows:

1. Leave the milk carafe in the machine (there is no need to empty the container);
2. Place a cup or other recipient under the milk spout (E5) (fig. 25);



3. Turn the froth adjustment/clean dial (E3) to "Clean" (fig. 26): hot water and steam are delivered from the milk spout. Cleaning stops automatically;
4. Turn the dial back to one of the froth selections;

Where several drinks are prepared in succession:


- To proceed with further preparations, when the message to clean the carafe appears (dial positioned on "Clean"), press "Cancel". Proceed with cleaning of the carafe after the final preparation.

After multiple preparations, the milk container is empty or the milk that remains is not enough to make further drinks

- Having run the cleaning operation on the milk carafe (dial positioned on "Clean"), disassemble the milk carafe and

clean all components, proceeding as described in heading "13.10 Cleaning the milk carafe (E)"

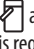
After multiple preparations, there is enough milk left in the container to make further drinks

- run the cleaning operation on the milk carafe (dial positioned on "Clean"), remove the milk carafe and put it straight in the refrigerator. The Hot Milk carafe  can be kept in the refrigerator for no more than 2 days, after which time all components should be cleaned, proceeding as described in the section "13.10 Cleaning the milk carafe (E)".

Important:

If the milk carafe is left out of the refrigerator for more than **30 minutes**, disassemble and clean all components, proceeding as described in the section "13.10 Cleaning the milk carafe (E)".

Following preparation of milk-based drinks — general notes:

- If the milk carafe is not cleaned, the symbol  appears on the homepage as a reminder that cleaning is required.
- In certain cases, the machine will need to heat up before cleaning can take place.
- To ensure correct cleaning, wait for the CLEAN function to end. The function is automatic. It must not be stopped while in progress.

10. PREPARING HOT WATER

1. Attach the hot water spout (D5) to the machine (fig. 4);
2. Place a cup under the spout;

Direct selection:

3. On the homepage (C), press directly on the image corresponding to hot water: delivery begins, and will stop automatically.

Customization of quantity:


3. Press the customization bar (C8) at the bottom of the image corresponding to hot water: the display shows the quantity to be selected;
4. Press "Deliver": delivery begins and will stop automatically.

Please note:

Delivery can be interrupted by pressing "Stop" or "Cancel".

11. "MY" FUNCTION (hot drinks only)

Using the "my" function, drinks can be customized as follows:

1. Make certain the intended profile (C1) for customization of the drink is active;
2. Press the customization bar (C8) at the bottom of the image corresponding to the desired drink;
3. Press ;
4. Press "Start" and follow the guided procedure;
5. Select the desired intensity, if envisaged for the drink, and press "Next";

- Press "Deliver" to start delivery;
- When the desired quantity has been delivered into the cup, press "Stop".
- If the drink in the cup is as desired, press "Save" to store the settings, or "Cancel" to retain the previous parameters.
- Press "X" to go back to the homepage.

The appliance goes back to the homepage (C).

Please note:

- If saved, the new settings will be stored ONLY in the selected profile.
- When customizing a single drink, the corresponding double version is customized likewise, automatically, and the machine displays the message "Settings saved for both double and single recipe";
- It is possible to exit programming mode at any given moment by pressing "X": the values will not be saved.
- Once the drink has been customized, the settings will show "Reset" (in the middle of the bottom line) and "my" (among the quantity selections). Pressing "Reset", the settings for the drink revert to the factory default values.

Drink quantities table		
Drink	Standard quantity	Programmable quantity
Espresso	40ml	20-180 ml
2X Espresso	40 ml + 40 ml	20-180 ml + 20-180 ml
Coffee	180ml	100-240 ml
Long	160ml	115-250 ml
Doppio+	120ml	80-180 ml
Americano	150ml	70-480 ml
Hot water	250ml	20-420 ml

12. SELECTING YOUR PERSONAL PROFILE

The machine allows multiple profiles to be saved, each one associated with a different icon.

The customized drink settings are saved in each profile. The order in which all the drinks are displayed is based on the frequency of selection.

To select a profile, proceed as follows:


- From the homepage (C), press the profile currently in use (C1): the list of selectable profiles will appear;
- Now select the required profile.

To add a new profile:


- From the homepage (C), press the profile currently in use (C1): the list of selectable profiles will appear;
- Press "+Add" and create the new profile

- Press "Change" to change the image and colour of the profile.
- To rename the profile, press on the existing name at the bottom of the profile: the keypad will pop up. Type the new name and press Ok.
- Press "Save".
- The new profile has been created. Press "X" to go back to the homepage.

To edit an existing profile:

- From the homepage (C), press the profile currently in use (C1): the list of selectable profiles will appear;
- Press  on the profile to be edited.
- Press "Change" to change the image and colour of the profile.
- To rename the profile, press on the existing name at the bottom of the profile: the keypad will pop up. Type the new name and press Ok.
- Having made the desired changes, press "Save".

To delete an existing profile:

- From the homepage (C), press the profile currently in use (C1): the list of selectable profiles will appear;
- Press  on the profile to be edited.
- Press "Delete".
- Confirm the operation by pressing "Yes".
- Press "X" to go back to the homepage.

Please note:

Once a selection has been made, the coloured bars of the drink settings will all appear in the same colour as the profile;

13. CLEANING



13.1 Cleaning the machine

The following parts of the machine must be cleaned periodically:

- internal circuit;
- coffee grounds container (A10);
- drip tray (A14) and drip tray grille(A12);
- water tank (A9);
- coffee spout (A16);
- removable infuser (A6), accessible after opening the relative service flap (A5);
- pre-ground coffee funnel (A3);
- control panel (B).
- milk carafe (E)

Important!

- Do not use solvents, abrasive detergents or alcohol to clean the machine. With De'Longhi superautomatic coffee machines, no chemical additives are required for cleaning purposes.
- Do not use metal objects to remove encrustations or coffee deposits as they could scratch metal or plastic surfaces.

dishwasher safe 	hand wash only 
drip tray grille (A12)	drip tray (A14)
milk carafe (E)	coffee grounds container (A10)
	cup tray (A11)
	water tank (A9)
	removable infuser (A6)

13.2 Cleaning the internal circuit

If the machine is not used for more than 3/4 days, it is strongly advisable, before using it after such a break, to empty the tank (A9) and refill it with fresh drinking water, then switch on and run 2/3 rinse cycles selecting the "Rinse" function (section "6.1 Rinsing").

Please note:

It can happen, during the rinse procedure, that water will find its way into the grounds container (A10): this is quite normal.

13.3 Cleaning the coffee grounds container

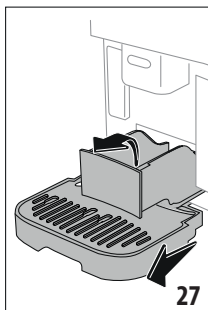
When "Empty grounds container" appears on the display, the grounds container must be emptied and cleaned. The machine cannot make coffee again until the grounds container (A10) has been cleaned. The machine will display the message indicating the need to empty the grounds container 72 hours after the first coffee has been prepared, even if the container is not full (for the 72 hours to be calculated correctly, the machine must never be disconnected from the mains power supply).

Important! Danger of scalding

If you make a number of milk-based drinks one after the other, the metal cup tray (A11) becomes hot. Wait for it to cool down before touching it and handle it from the front only.

To clean (with the machine on):

1. Remove the drip tray (A14) and grounds container (A10) (fig. 27);



2. Empty the drip tray and the grounds container and clean thoroughly with a brush to remove all residues that may have collected on the bottom.
3. Put the drip tray complete with grille and grounds container back in the appliance.

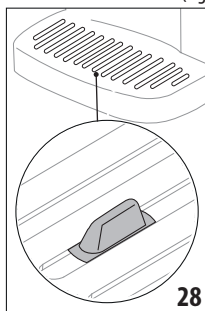
Important!

- When removing the drip tray, the coffee grounds container must always be emptied, even if it has not filled up noticeably. If this is not done, it can happen that when further coffees are prepared, the grounds container will fill up more than expected and clog the machine.
- The grounds container on certain models is made up of two distinct parts: after cleaning, reassemble the parts before returning the container to the machine.

13.4 Cleaning the drip tray and drip tray grille

Important!

The drip tray (A14) is fitted with a level indicator (A13) (red) showing the amount of water it contains (fig. 28).



Before the indicator protrudes from the cup tray (A11), the drip tray must be emptied and cleaned, otherwise the water may overflow the edge and damage the appliance, the surface it rests on or the surrounding area. To remove the drip tray, proceed as follows:

1. Remove the drip tray complete with grille (A12) and tray, and the grounds container (A10) (fig. 24);
2. Check the condensate drip tray, which is coloured red (A15) and empty if necessary;
3. Check the red-coloured condensate tray;
4. Remove the cup tray (A11) and drip tray grille (A12), then empty the drip tray and grounds container and wash all components.
5. Put the drip tray complete with grille, tray and grounds container back in the appliance.

Important!

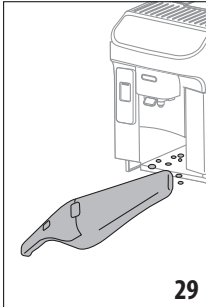
When removing the drip tray, the coffee grounds container must always be emptied, even if it has not filled up noticeably. If this is not done, it can happen that when further coffees are prepared, the grounds container will fill up more than expected and clog the machine.

13.5 Cleaning the inside of the machine

Danger of electric shock!

Before cleaning internal parts, the machine must be turned off (see section "5. Turning the appliance off") and unplugged from the mains power supply. Never immerse the machine in water.

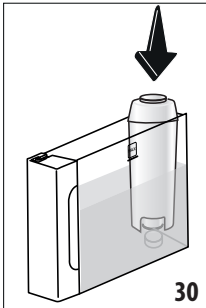
1. Check regularly (about once a month) that the inside of the appliance (accessible after removing the drip tray (A14)) is not dirty. If necessary, remove coffee deposits with a brush and a sponge.
2. Remove all residues with a vacuum cleaner (fig. 29).



13.6 Cleaning the water tank

Periodically (about once a month) and whenever the water softener filter (D4) is replaced, clean the water tank (A9).

1. Take out the water tank (fig. 2), remove the water softener filter (if installed) and rinse under running water;
2. Empty the water tank and clean with a damp cloth and a little washing up liquid. Rinse thoroughly with water;
3. Reinstall the filter (fig. 30), fill the tank with fresh water up to the MAX level (fig. 3) and reposition the tank;



4. (Only if a water softener filter is installed): release 100ml of hot water to reactivate the filter.

Please note:

If the appliance is not used for more than 3-4 days, it is advisable to clean the tank as described above.

13.7 Cleaning the pre-ground coffee funnel

Clean the pre-ground coffee funnel (A3) regularly (about once a month) with a damp cloth. Proceed as follows:

1. Turn the machine off (see chapter "5. Turning the appliance off");
2. Open the funnel flap;
3. Clean the funnel with a brush;
4. Close the flap.

Important!

After cleaning, make sure that no object or accessory has been left in the funnel: the presence of foreign matter in the funnel during operation could cause damage to the machine.

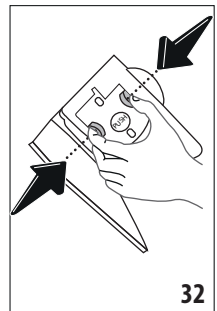
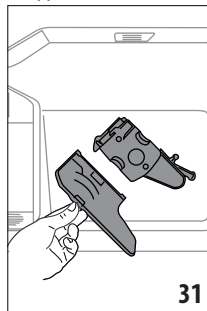
13.8 Cleaning the infuser

The infuser (A6) must be cleaned at least once a month.

Important!

The infuser cannot be removed while the machine is on.

1. Make sure the machine is correctly turned off (see section "5. Turning the appliance off");
2. Remove the water tank (A9) (fig. 2);
3. Open the infuser door (A5) (fig. 31) on the right side of the appliance;



4. Press the two coloured release buttons inwards and at the same time pull the infuser outwards (fig. 32);
5. Immerse the infuser in water for about 5 minutes, then rinse under the tap;

Important!

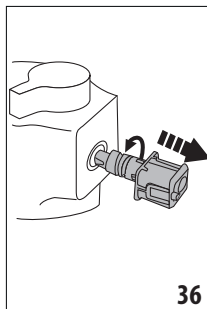
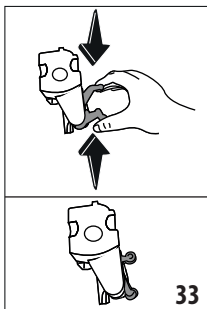
RINSE WITH WATER ONLY

NO DETERGENTS - NO DISHWASHER

6. Do not use detergents when cleaning the infuser, as they could damage it.
7. Use a brush to remove any coffee residues left in the infuser housing, which can be seen through the infuser flap (A5);
8. After cleaning, replace the infuser by sliding it into its housing, then apply pressure to the PUSH symbol until it clicks into place;


Please note:

If the infuser is difficult to insert, before insertion, adapt it to the right size by pressing the two levers (fig. 33).



9. Once inserted, make sure the two coloured buttons have snapped out;
10. Close the infuser flap;
11. Reposition the water tank in the machine.

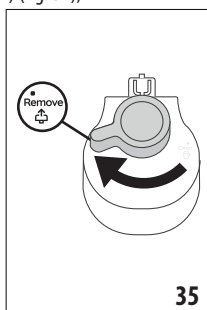
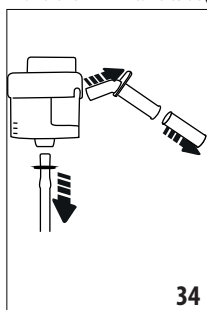
13.9 Cleaning the control panel (B)


1. Turn the machine off by pressing the  button (B1);
2. Wipe with a soft, non-abrasive cloth;
3. Apply firm pressure to remove persistent fingerprints, without ever using excessive force.

13.10 Cleaning the milk carafe (E)

Clean the milk carafe after each use, as described below:

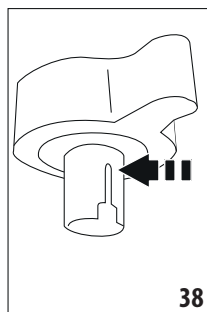
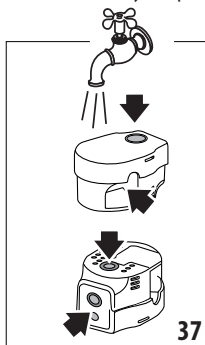
1. Remove the lid of the milk carafe (E1) (fig. 18);
2. Detach the milk spout (E5), the milk spout extension (E6) and the milk intake tube (E7) (fig. 34);



3. Turn the froth adjustment dial (E3) clockwise to the  position (fig. 35) and pull;
4. Turn the milk carafe connector (E4) anticlockwise and pull out (fig. 36).

5. Wash in a dishwasher (recommended) or by hand as indicated below:

- **In a dishwasher:** Rinse all the above components and the milk container under hot running drinking water (at least 40 °C), then place them in the top basket of the dishwasher and run a wash programme at 50 °C, e.g. standard ECO.
 - **By hand:** Rinse all the components and the milk container thoroughly with hot running drinking water (at least 40 °C) to remove all visible milk residues, making certain to direct the water through all the holes in the lid (fig. 37). Next, immerse all the components in a solution of hot drinking water (at least 40 °C) and washing up liquid for at least 30 minutes. Rinse all the components described above thoroughly under hot drinking water, rubbing each one individually between fingers and thumbs.
6. Check carefully that no milk residues have been left in the recess and the channel on the underside of the dial (fig. 38); if necessary, scrape the channel clean with a toothpick;



7. Check that the intake tube and spout are not clogged with milk residues;
8. Dry all the components with a clean dry cloth;
9. Reassemble all the lid components;
10. Refit the lid to the milk container.

Please note:

The machine will give a reminder each week of the need for thorough cleaning of the milk carafe, indicating the correct procedure.


14. DESCALING

Important!

- Before use, read the instructions and the labelling on the descaler pack.
- Use only descaler supplied by De'Longhi. Using unsuitable descaler and/or performing descaling incorrectly may result in faults not covered by the manufacturer's guarantee.
- Descaler could damage delicate surfaces. If the product is accidentally spilt, dry immediately.

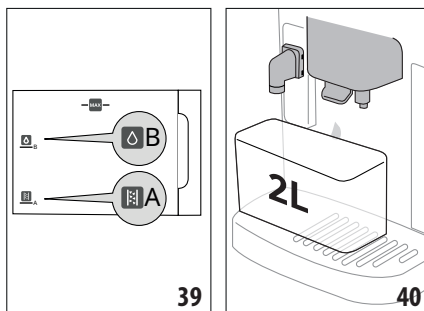
To descale	
Descaler	De'Longhi descaler
Container	Recommended capacity: 2 litres
Time	~25min

Descale the appliance when the corresponding message appears on the homepage (C); to proceed immediately with descaling, press "Yes" and follow the instructions from point (6).

To delay descaling until later, press "Cancel": the homepage will continue to show the corresponding symbol  (C3) as a reminder that descaling needs to be carried out. (The message reappears every time the machine is turned on).

To access the descaling menu:

1. Press the settings menu icon (C6) on the homepage;
2. Scroll through the pages of the menu until the item "Descalc" appears;
3. Press "Yes" to initiate the guided descale procedure (or "Read more" for additional information);
4. Press "Yes" to start;
5. Attach the water spout (D5) (fig. 4);
6. Remove and empty the drip tray (A14) and the coffee grounds container (A10) (fig. 24), then reposition both and press "Next";
7. Remove the water tank (A9), lift the lid (A8), remove the filter (if installed) (D4) and press "Next";
8. Empty the tank completely and press "Next";
9. Pour the descaler into the tank up to the level A marked inside the tank (equal to one 100ml packet), then add water (1 litre) up to level B (fig. 39). Reposition the water tank (with lid) in the machine and press "Start";



10. Place an empty container of at least 2 litres capacity under the spouts (fig. 40). Press "Done" to start the procedure;

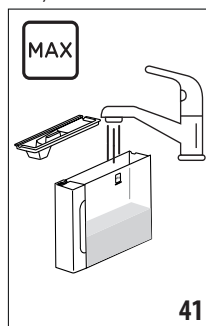
Important! Danger of scalding

Hot water containing acid flows out of the spouts. Accordingly, take care to avoid contact with this solution.

11. The descale programme starts and the descaler solution comes out of the hot water spout and the coffee spout; a succession of rinses is performed automatically at set intervals to remove the scale residues from inside the coffee machine;

After about 15 minutes, the descaling action ceases;

12. The appliance is now ready to be rinsed out with clean water. Empty the container used to collect the descaler solution. Remove the water tank from the machine, empty it and rinse under running water, then fill with clean water up to the MAX level and reposition it in the machine (fig. 41). Press "Next";



13. Having emptied the container used previously to collect the descaler solution, reposition it under the spouts and press "Yes" to start the rinse sequence;
14. Hot water is released both from the hot water spout and from the coffee spout;
15. When the water in the tank has run out, empty the container used to collect the rinsing water;

16. Take out the water tank and reposition the water softener filter, if removed previously. Press "Yes" to continue;
17. Fill the tank with fresh water up to the MAX level, return it to the machine and press "Yes" to continue;
18. Having emptied the container used previously to collect the descaler solution, reposition it under the spouts and press "Yes" to start another rinsing cycle;
19. When the water in the tank has run out, empty the container used to collect the rinsing water, then remove, empty and reposition the drip tray (A14) and the grounds container (A10) and press "Next";
20. Take out the water tank, top up to the max level and reposition in the machine;
21. The descaling procedure is now complete: press "OK". The appliance performs a rapid preheat cycle and then goes back to the homepage.

Please note:

- If the descaling cycle is not completed correctly (e.g. electrical power failure) it is advisable to repeat the procedure;
- Water may find its way into the grounds container (A10) during the descale cycle: this is quite normal.
- If the water tank has not been refilled to the MAX level, the machine prompts for a third rinse to ensure that the descaler solution has been completely eliminated from the internal circuits. Before starting the rinse, remember to empty the drip tray.

15. WATER SOFTENER FILTER

15.1 Installing the filter


To install the filter, proceed as follows:

1. Press the settings menu (C6);
2. Scroll through the pages until the item "Water filter" is displayed;
3. Press "Read more";
4. Press "Yes" to initiate the guided procedure
5. Proceed from point (3) of heading "Installing the filter" in the section "Operating the appliance for the first time".

Please note:

The filter lasts about two months assuming normal use of the machine; if on the other hand the machine remains idle with the filter installed, it will not last more than three weeks, at most.

15.2 Replacing or removing the filter

Replace the filter (D4) when the corresponding message appears on the homepage (C): to replace the filter immediately, press "Yes" and follow the instructions from point (3). To delay replacement of the filter until later, press "Cancel": the display will continue to show the corresponding symbol  as a reminder that the filter needs replacing.

To replace, proceed as follows:

1. Press the settings menu (C6);
2. Scroll through the pages until the item "Water filter" is displayed, and press "Read more";
3. Press "Yes" to initiate the guided procedure;
4. Remove the water tank (A9) and the spent filter.
5. To remove the filter, press "Ok";
6. To install a new filter, press "Yes". Proceed with the operations illustrated under heading "Installing the filter" in section "Operating the appliance for the first time" from point (3).

Please note:

After two months (see date indicator), or after 3 weeks if the appliance has not been used, the filter should be replaced even if the warning message has not yet been displayed.

16. TECHNICAL DATA

Voltage:	220-240 V~ 50-60 Hz max. 10 A
Power:	1450 W
Pressure:	1.9 MPa (19 bars)
Water tank capacity:	1.8l
Size LxDxH:	260x450x385 mm
Cord length:	1200 mm
Weight (varies according to model):	11.2 kg
Beans container capacity:	300 g


De'Longhi reserves the right to modify the technical specification and styling of its products at any moment, without compromising their functionality and quality.





16.1 Tips for Energy Saving

- To reduce energy consumption, after delivering one or more drinks, remove the milk carafes or accessories.
- Set auto-off to 15 minutes (see section "6.5 Auto-off");
- Enable Energy Saving (see paragraph "6.4 General");
- Always carry out the descaling cycle when prompted by the machine.

17. MESSAGES SHOWN ON THE DISPLAY

DISPLAYED MESSAGE	MEANING	REMEDY
The water tank needs filling with fresh water.	Insufficient water in the tank (A9).	Extract the tank and fill with fresh water, then put back in the appliance.
Can you fit the water tank?	The tank (A9) is not correctly in place.	Reposition the tank correctly and press fully home.
Can you fit the infuser?	The infuser (A6) has not been replaced after cleaning.	Insert the infuser as described in section "13.8 Cleaning the infuser"
The grounds container and the drip tray need emptying. Empty them regularly, even if they are not full	The grounds container (A10) is full.	Clean as described in section "13.3 Cleaning the coffee grounds container"
Fit grounds container and drip tray	Grounds container (A10) and/or drip tray (A14) not correctly in place, or missing.	Refit the drip tray complete with grounds container and press fully home.
Ok, let's get started. Add the pre-ground coffee you prefer — no more than one measure!	Preparation with pre-ground coffee has been selected.	Make certain the funnel (A3) is not blocked, then add one level measure (D2) of pre-ground coffee, press "Next" on the display and follow the instructions in section "8.4 Making drinks using pre-ground coffee".
Fill the beans container	The coffee beans have run out.	Fill the beans container (A4) and press OK to resume delivery
Fit the water spout	Spout (D5) not correctly in place, or missing.	Fit the spout and push fully home (fig. 5). The machine emits a beep (if the beep function is enabled).
Can you fit the LatteCrema Hot carafe?	Milk carafe (E) not positioned correctly, or missing.	Position the milk carafe and push fully home: the machine emits a beep (if the beep function is enabled).
Cleaning in progress. Back in a moment	The appliance has detected impurities in its internal circuits.	Wait until the appliance is ready for use again and reselect the required drink. Contact an authorized Service Centre if the problem persists.
The new settings have not been saved	In the course of customizing a drink (see section "11. "My" function (hot drinks only)"), preparation has been deliberately interrupted by pressing "Cancel", or an alarm has been tripped.	Press "OK" to go back to the homepage (C) and view the alarm that has caused the interruption. Follow the instructions corresponding to the alarm displayed (see section "17. Messages shown on the display")
		→

DISPLAYED MESSAGE	MEANING	REMEDY
Sorry, impossible to complete this drink. Reduce the intensity and try again	The grinding is too fine, so that the coffee is delivered too slowly or not at all.	Select a milder intensity (see "8.3 Customization of the drink")
	If the water softener filter (D4) is installed, an air bubble may have found its way into the internal circuit, obstructing delivery	Press "OK" and deliver a little water (see section "10. Preparing hot water") until the flow is regular. If the problem continues, remove the filter (see section "15.2 Replacing or removing the filter")
Impossible to complete the drink. Adjust the coffee mill, turning the dial to give a finer setting, 1 step at a time (+1)	The beans are too finely ground, so that the coffee is delivered too slowly or not at all.	Press "OK" and proceed to adjust the coffee mill as appropriate (see section "6.9 Coffee mill settings").
Impossible to complete the drink. Reduce the amount of pre-ground coffee and try again	Too much coffee has been used.	Select a milder intensity (see "8.3 Customization of the drink") or reduce the quantity of pre-ground coffee (maximum 1 measure). Press "OK" to go back to the homepage or wait until the message disappears.
Remember to put the milk carafe in the refrigerator	A milk-based drink has been prepared and the milk carafe is still positioned in the appliance	Remove the milk carafe and place it in the refrigerator.
Descaling is required. Ready to start? (~ 30 min)	Indicates that the machine needs descaling.	If the intention is to proceed with descaling, press "OK" and follow the guided procedure, otherwise press "Cancel": in this case, the homepage (C) continues to display the corresponding symbol  (C3) as a reminder that descaling is required (see section "14. Descaling").
The water filter needs to be replaced. Ready to start?	The water softener filter (D4) is spent.	Press "OK" to replace or remove the filter, or "Cancel" to carry out the procedure later. Follow the instructions in section "15. Water softener filter".
Something is not right: have a look at the instruction manual to improve things	The inside of the appliance is very dirty.	Clean the inside of the appliance thoroughly, as described in section "13. Cleaning". If the message is still displayed after cleaning, contact De'Longhi Customer Services and/or an approved Service Centre
		→


DISPLAYED MESSAGE	MEANING	REMEDY
The water circuit is empty. Ready to fill?	The water circuit is empty	Press "OK" to fill the circuit. Delivery stops automatically. It is normal for there to be water in the drip tray (A14) after filling. If the problem persists, make sure the water tank (A9) is fully inserted.
	A new water softener filter has been inserted (D4)	Make sure the instructions for inserting the new filter have been followed correctly (section "15.1 Installing the filter" and "15.2 Replacing or removing the filter"). If the problem continues, remove the filter (section "15.2 Replacing or removing the filter").
	Energy saving is enabled.	To disable energy saving, proceed as described in section "6.4 General".
	The machine must be descaled.	The descaling procedure described in section "14. Descaling" needs to be performed.
	The filter must be replaced (D4)	Replace the filter or remove it as described in section "15. Water softener filter".
	Remember that the milk carafe (E) must be cleaned	Turn the froth adjustment dial (E3) to the Clean position.

18. TROUBLESHOOTING

Possible malfunctions of the machine are listed below.

If the problem cannot be resolved as described, contact Customer Service.

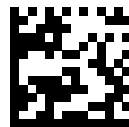
PROBLEM	POSSIBLE CAUSE	REMEDY
The appliance does not come on	The cord is not plugged into the mains socket.	Plug into the mains socket (fig. 1).
Coffee not hot	The internal circuits of the appliance have cooled down because 2-3 minutes have elapsed since the last coffee was made.	Before making the coffee, heat the internal circuits by rinsing, using the rinse function (see section "6.1 Rinsing").
	Coffee temperature setting too low.	Set a higher coffee temperature in the settings menu (C6) (see section "6.6 Coffee temperature").
	The cups were not preheated.	Warm the cups by rinsing them with hot water (Please note: the hot water function can be used).
	The machine needs descaling	Proceed as described in section "14. Descaling". Next, check the water hardness ("Measuring water hardness") and make sure the machine setting matches the local water supply hardness ("Setting water hardness").
		→

PROBLEM	POSSIBLE CAUSE	REMEDY
The coffee is weak or not creamy enough.	Coffee ground too coarsely.	Access the setting menu (C6) and follow the indications for adjustment of the coffee mill. The effect is visible only after 3 further coffees have been made (see section "6.9 Coffee mill settings").
	Coffee not suitable.	Use coffee for espresso machines.
	Coffee not fresh.	The coffee pack has been opened for too long and has lost its taste.
The coffee emerges too slowly or drop-by-drop.	Coffee ground too finely.	Access the settings menu (C6) and follow the indications to adjust grinding level. The effect is visible only after 3 further coffees have been made (see section "6.9 Coffee mill settings").
Coffee does not come out of one or both spouts.	The coffee spouts (A16) are blocked.	Clean the coffee spout with a sponge or a toothpick.
The coffee delivered is watery.	The funnel (A3) is clogged.	Clean the funnel with the aid of a brush as described in section "13.7 Cleaning the pre-ground coffee funnel".
Delivery of the drink short of measure	Not enough water in the tank	Always fill the tank at least to the MAX level
The machine does not deliver coffee.	Impurities have been detected internally of the machine: the message "Cleaning in progress" appears in the display.	Wait until the appliance is ready for use again and reselect the required drink. Contact an authorized Service Centre if the problem persists.
The infuser (A6) cannot be removed.	The appliance has not been turned off correctly	Turn the machine off by pressing the  button (B1) (see section "5. Turning the appliance off").
On completion of the descale cycle, the machine calls for a third rinse.	During the two rinse cycles, the water tank (A9) has not been filled to the MAX level	Follow the procedure indicated by the machine, but first empty the drip tray (A14) to avoid water overflowing.
Milk not flowing from the milk spout (E5) .	The lid (E1) of the milk carafe is dirty	Clean the lid as described in section "13.10 Cleaning the milk carafe (E)".
	The lid (E1) is not correctly assembled.	Assemble all the various components correctly as indicated in section "9.1 Preparing the milk carafe (E)" and "9.4 Adjusting the amount of froth".
→		

PROBLEM	POSSIBLE CAUSE	REMEDY
The milk presents large bubbles, or splashes from the milk spout (E5), or is under-frothed.	The milk is not cold enough, or the type of milk not suitable for the drink requested	To ensure optimum results, check that the right type of milk is being used (see section "9.2 What milk to use?"). Use drinks at refrigerator temperature (about 5° C).
	The lid (E1) of the milk carafe is dirty	Clean the milk container as described in section "9.6 Cleaning the milk carafe after use"
	There is water in the channel located on the underside of the froth adjustment dial (E3)	Detach the dial and dry thoroughly.
	Vegetable drinks are being used.	For best results, use drinks at refrigerator temperature (about 5° C). Adjust the amount of froth as described in section "9.4 Adjusting the amount of froth"
The cup shelf (A11) is hot.	Several drinks have been prepared in rapid succession	
After cleaning, there is difficulty repositioning the drip tray in the machine	The condensate tray(A15) is not in the correct position	Make sure the condensate tray is inserted correctly
The machine emits noises or small puffs of steam while not in use	The machine is ready for use, or has recently been turned off, and condensate is dripping into the hot vaporiser	This is part of normal operation. To limit the phenomenon, empty the drip tray.
The appliance emits puffs of steam from the drip tray (A14) and/or there is water on the surface the appliance rests on.	The drip tray grille (A12)has not been replaced after cleaning.	Reposition the grille in the drip tray.

Register Now

www.delonghi.com/register



57132C8470_00_0823