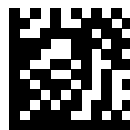


Proudly distributed by  
**De'Longhi Australia Pty Limited**  
P.O. BOX 4540  
CASULA MALL NSW 2170  
Customer Service Ph: 1800 126 659  
Fax: 1800 706932  
[www.delonghi.com.au](http://www.delonghi.com.au)  
e-mail: [info.au@delonghigroup.com](mailto:info.au@delonghigroup.com)

**De'Longhi New Zealand Limited**  
99 Khyber Pass Road  
Grafton 1023  
Auckland  
New Zealand  
P.O. Box 58-056 Botany  
MANUKAU 2163  
Customer Service Ph: 0508 200 300  
Fax: 0508 200 301  
[www.delonghi.co.nz](http://www.delonghi.co.nz)  
e-mail: [info.nz@delonghigroup.com](mailto:info.nz@delonghigroup.com)

**Register Now**   
[www.delonghi.com/register](http://www.delonghi.com/register)



---

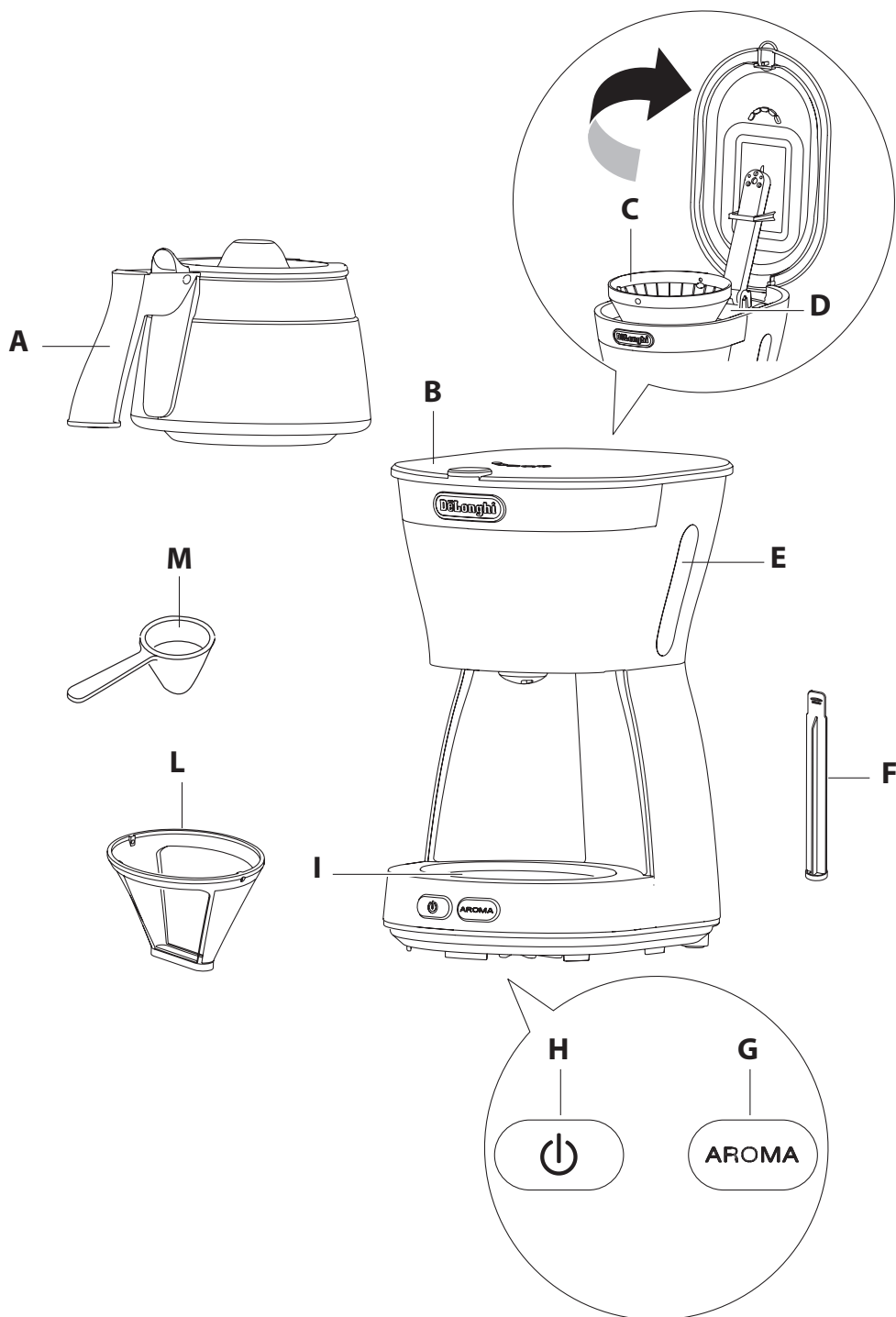
ICM12 series

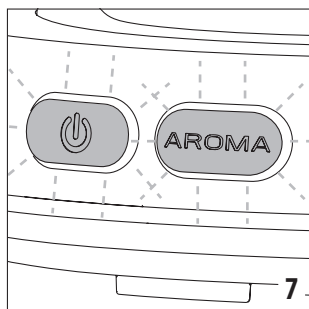
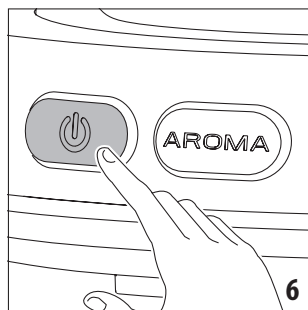
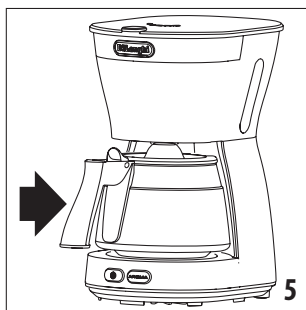
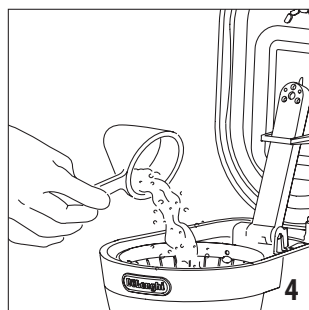
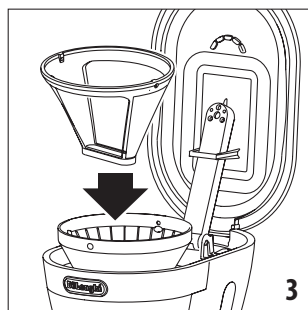
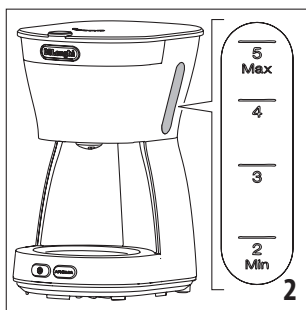
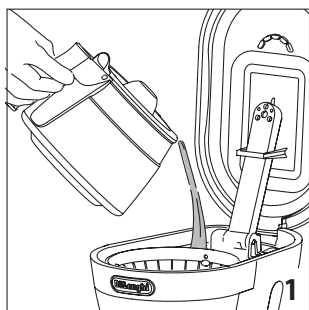
COFFEE MAKER



---

**De'Longhi**





## IMPORTANT SAFEGUARDS



### **Danger!**

Failure to observe the warning may result in life threatening injury by electric shock.

- The power cable of this appliance must not be replaced by the user as the operation requires the use of special tools.

If it is damaged or must be replaced, contact De'Longhi Customer Services to avoid all risk.

- Never immerse the coffee maker in water. It is an electrical appliance.
- Unplug the appliance and turn off the main switch when not in use. Do not leave the appliance switched on unnecessarily.
- As with all electrical appliances, use the coffee maker with care and common sense, particularly in the presence of children.
- Check that the voltage of the mains power supply corresponds to the value indicated on the appliance rating plate. Connect the appliance to an efficiently earthed electrical socket with a minimum rating of 10A only. The manufacturer declines all liability for any accidents caused by the absence of an efficient earth system.
- If the power socket does not match the plug on the appliance, have the socket replaced with a suitable type by a qualified electrician.
- When filling the water tank or removing the jug from the machine, avoid spilling liquid on the plug or power cable.



### **Danger of burns!**

Failure to observe the warning could result in scalds or burns.

- This appliance is designed and made to "prepare coffee". Be careful to avoid being scalded by spraying water or steam or due to improper use of the appliance.
- When using the appliance do not touch the hot surfaces. Use the knobs or handles.
- Never touch the appliance with wet or damp hands or feet.
- The plate remains hot after the appliance has been used.



### **Important!**

Failure to observe the warning could result in injury or damage to the appliance.

- The manufacturer is not liable for damage caused by inappropriate, incorrect or irresponsible use.
- In the event of failure or malfunction, unplug the appliance from the mains. If it requires repair, contact De'Longhi Customer Services only and ask for original spare parts to be used. Failure to respect the above could jeopardise the safety of the appliance.

- The appliance is not intended for use by persons (including children) with reduced physical, sensory or mental capabilities, or lack of experience and knowledge, unless they have been given supervision or instruction concerning use of the appliance by a person responsible for their safety.

Children should be supervised to ensure that they do not play with the appliance.

- After removing the packaging, make sure the appliance is complete and undamaged. If in doubt, do not use the appliance and contact qualified personnel only.
- The packing elements (plastic bags, polystyrene foam, etc.) should be kept out of reach of children as they are a safety hazard.
- Place the appliance on a work surface far away from water taps, basins and sources of heat.
- Never install the appliance in environments where the temperature may reach 0°C or lower (the appliance may be damaged if the water freezes).



### **Please note:**

This symbol identifies important advice or information for the user.

- Read this instruction booklet carefully before installing and using the appliance. This is the only way to ensure the best results and maximum safety for the user.

- This is a household appliance only.

It is not intended to be used in: staff kitchen areas in shops, offices and other working environment; farm houses; by clients in hotels, motels and other residential type environments; bed and breakfast type environments

Any other use is considered improper and thus dangerous.




- This appliance conforms to EC Regulation 1935/2004 on materials and articles intended to come into contact with food.

- After positioning the appliance on the work top, leave a space of at least 5 cm between the surfaces of the appliance and the side and rear walls and at least 20 cm above the coffee maker.


## INSTRUCTIONS FOR UK PLUG ONLY

If needed, always replace the fuse with one of the same value as fitted to the product when purchased.

## DESCRIPTION OF APPLIANCE

- A. Glass jug
- B. Lid
- C. Filter holder for drip coffee
- D. Water fill compartment
- E. Water level window
- F. Water tank filter
- G. Aroma button
- H.  On/stand by button
- I. Plate (heats up in models with glass jug only)
- L. Permanent filter (if provided) or paper filter
- M. Measure

## HOW TO MAKE DRIP COFFEE

 **Please note:** the first time the appliance is used, all accessories and the internal circuits must be washed through by making at least two jugs of coffee without using pre-ground coffee.


- Open the lid (B) at the top and use the jug to pour clean cold water into the water fill compartment (D) (fig. 1) up to the level indicated for the number of cups of coffee you want to make. Check the level of water in the tank through the level window (E) (fig. 3). You are recommended to use the jug provided as a measure as the maximum capacity of the jug and the tank are the same.
- Position the permanent filter (L) (if present) in the filter holder (C) (fig. 3). In versions without permanent filter, use the paper filter (size 1x2).
- Place the pre-ground coffee in the filter using the measure (M) provided and level evenly (fig. 4). See the table for recommended quantities. Use good quality, medium pre-ground coffee for drip coffee makers.

## Recommended quantities:

No. cups	No. measures (*)
2	2
3	3
4	4
5	5

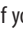

(\*) 1 level measure = 1 tablespoon (5 g)


The quantities given in the table are indicative and should be adapted to your personal taste and the type of coffee. Never exceed the maximum quantity of 5 measures. The type of blend has a considerable influence on the coffee you make. You should therefore try various types of coffee to find the one best suited to your taste.

- Close the lid (B) at the top of the appliance and place the closed jug on the plate (fig. 5).
- Press the  On/stand by button (H) (fig. 6). The light on the switch indicates that the coffee maker is operating. Coffee delivery will start after a few seconds. The coffee maker emits a 'beep' when delivery begins, then three beeps when it ends.

 **Please note:** percolation times vary according to the type of coffee used.

The taste of the coffee can be optimised by pressing the AROMA button (G). This function enables a process of percolation which releases the water in the filter more slowly. Filtering a little at a time improves the flavour and aroma of the coffee. To enable the function, press the AROMA button (G) (the light on the button comes on) after pressing On/stand by button (H). To disable the function, press the AROMA button again. You are recommended to use the AROMA button when you do not want to make a full jug of coffee.

- If you leave the  On/stand by button (H) pressed after percolation has finished, the plate will keep the coffee at the ideal temperature. The appliance goes off automatically 40 minutes after coffee delivery ends. To turn the plate off press the  On/stand by button (H) button again.
- It is completely normal for the appliance to give off steam while the coffee is percolating.
- For a new brewing cycle switch off the appliance pressing On/stand by button (H) and restart.

 **Please note:** removing the jug before all the coffee requested has been delivered does not interrupt coffee making, but merely blocks flow into the jug. If you want to pour out a little coffee immediately, you should do so as rapidly as possible in order to avoid the coffee overflowing.

## CLEANING AND MAINTENANCE

---

Before maintenance or cleaning of the appliance, turn off, unplug from the mains socket and allow to cool.

- Do not use solvents or abrasive detergents to clean the coffee maker. Just wipe with a soft damp cloth.
- Never immerse the coffee maker in water. It is an electrical appliance.
- The water tank filter (F) can be reached through the lid (B). Clean when necessary.
- Do not wash the jug and accessories in the dishwasher.

## DESCALING

---

If the water in your area is hard, limescale builds up over time. These deposits may affect correct operation of the appliance. You are recommended to descale the coffee maker every 40 coffee making cycles.

When AROMA button (G) and ☺ On/stand by button (H) flashes simultaneously (fig. 7), (about every 40 cycles) you have to descale the appliance.

- The appliance resets automatically after descaling.
- To descale, always use special commercially available descaling products for drip coffee makers.
- Dilute the product in the jug, following the instructions on the descaler pack;
- Pour the solution into the water fill compartment;
- Place the jug on the warming plate; press the ☺ On/Stand-by button (H) and the AROMA button (G) simultaneously for longer than 1.5 seconds.
- Once the descaling cycle is complete (the lights on the two buttons will turn off), rinse by running the device with water only, at least twice (2 full tanks of water).
- Failure to clean as described above invalidates the guarantee.

## TECHNICAL DATA

---

Mains voltage:	220-240V-50-60Hz
Absorbed power:	750W
Weight:	1.35 kg

## DISPOSING OF THE APPLIANCE

---



The appliance must not be disposed of with household waste, but taken to an authorised waste separation and recycling centre.