

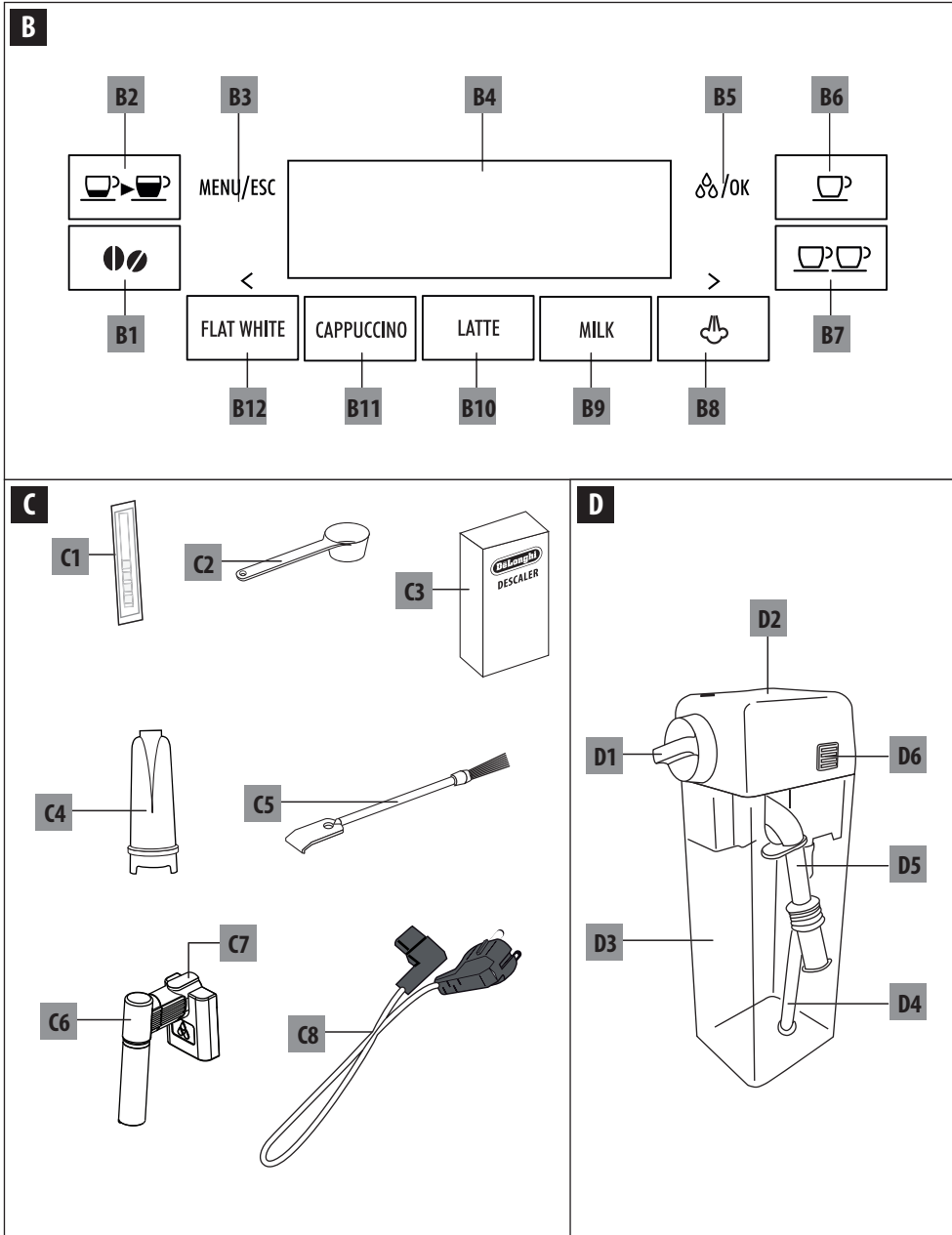
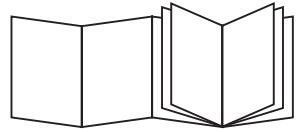


---

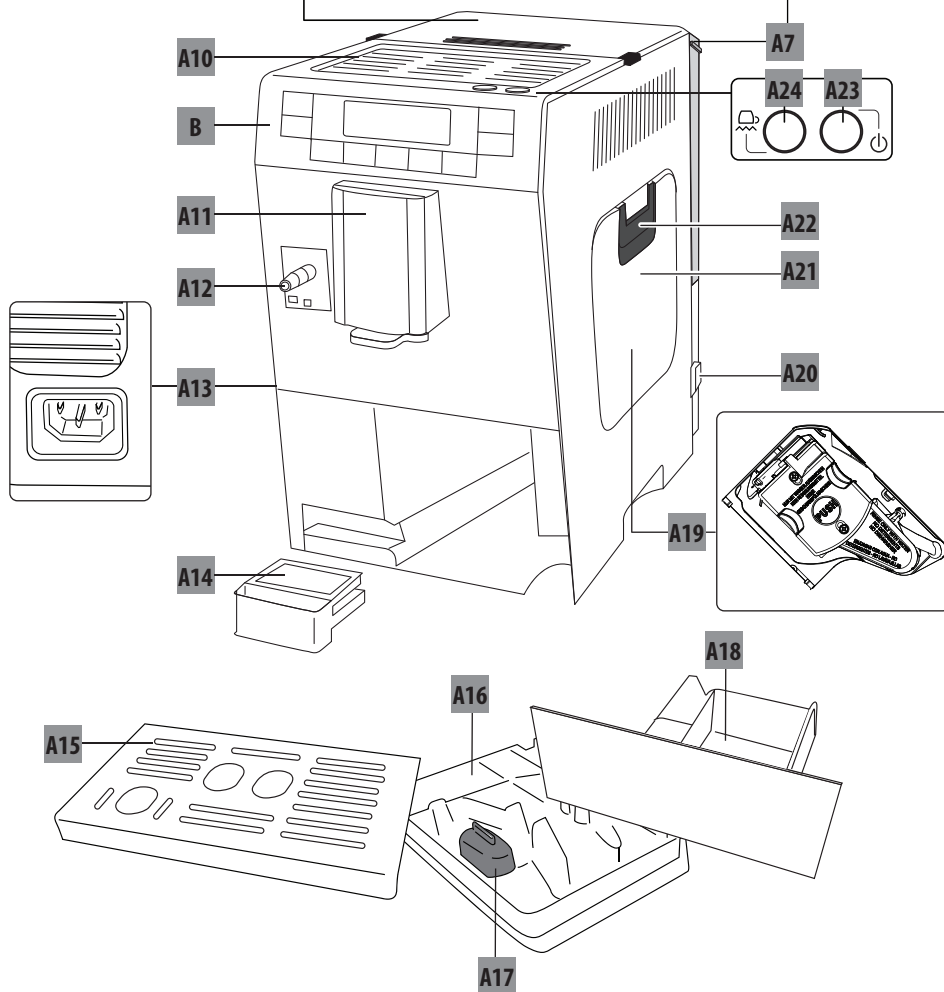
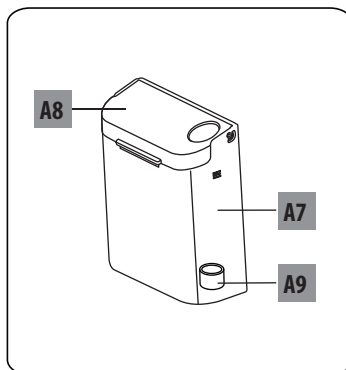
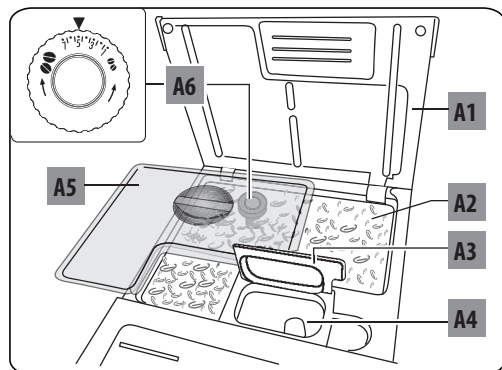
ETAM3636X

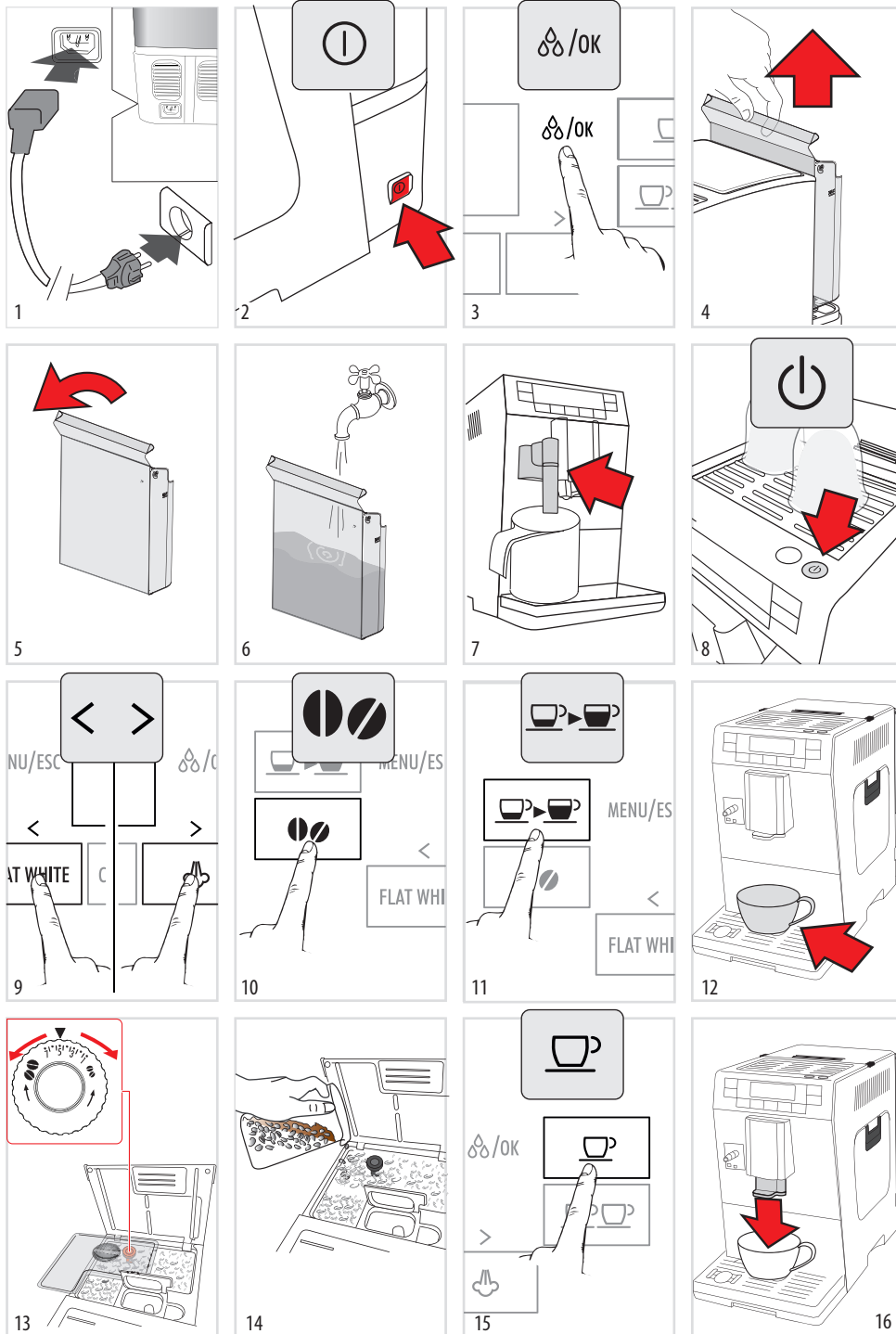
BEAN TO CUP ESPRESSO  
AND CAPPUCCINO  
MACHINE  
Instruction for Use

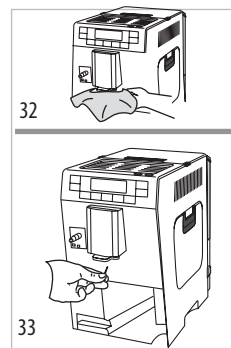
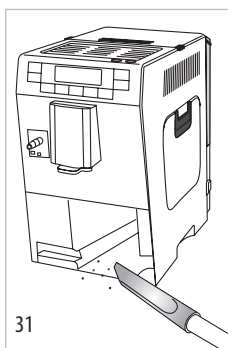
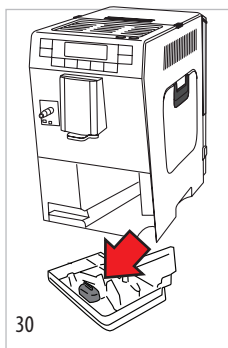
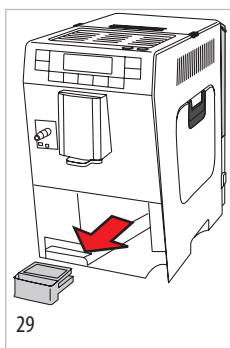
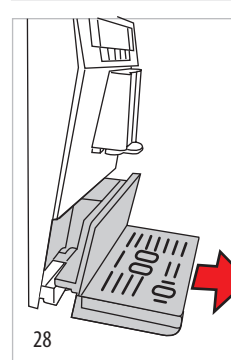
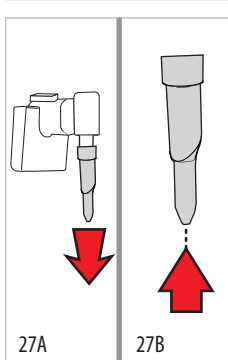
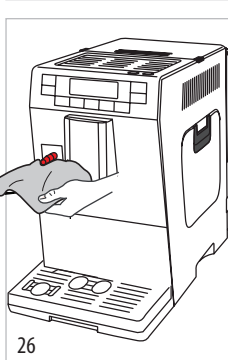
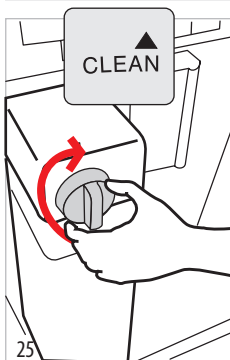
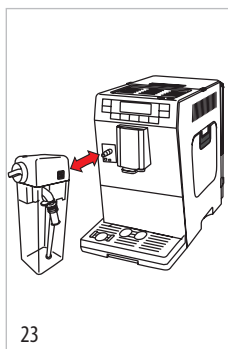
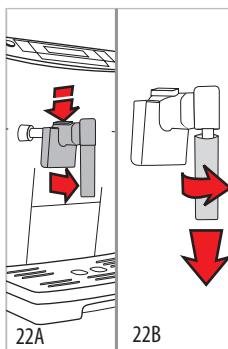
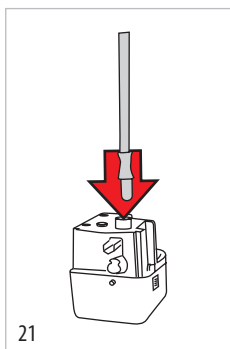
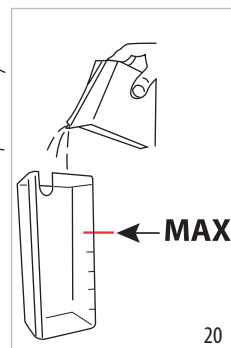
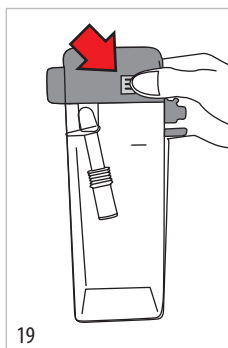
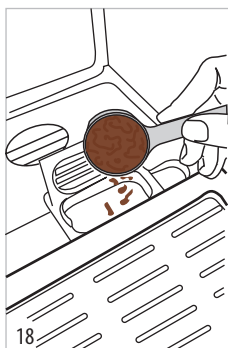
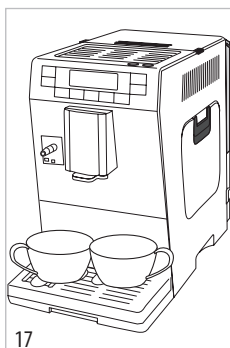




**A**







## CONTENTS

<b>1. FUNDAMENTAL SAFETY WARNINGS .....</b>	<b>7</b>
<b>2. SAFETY WARNINGS .....</b>	<b>8</b>
2.1 Symbols used in these instructions .....	8
2.2 Designated use.....	8
2.3 Instruction for Use.....	8
<b>3. INTRODUCTION .....</b>	<b>8</b>
3.1 Letters in brackets .....	8
3.2 Troubleshooting and repairs.....	8
<b>4. DESCRIPTION.....</b>	<b>9</b>
4.1 Description of the appliance.....	9
4.2 Description of the control panel .....	9
4.3 Description of the accessories.....	9
4.4 Description of the milk container .....	9
<b>5. BEFORE USE.....</b>	<b>9</b>
5.1 Checking the appliance .....	9
5.2 Installing the appliance.....	9
5.3 Connecting the appliance.....	9
5.4 Setting up the appliance .....	10
<b>6. TURNING THE APPLIANCE ON.....</b>	<b>10</b>
<b>7. TURNING THE APPLIANCE OFF .....</b>	<b>10</b>
<b>8. MENU SETTINGS .....</b>	<b>10</b>
8.1 Rinsing.....	10
8.2 Descale.....	11
8.3 Install filter.....	11
8.4 Replacing the water softener filter (if installed).....	11
8.5 Adjust time .....	11
8.6 Auto-start .....	11
8.7 Auto-off .....	11
8.8 Auto-standby timer/ auto-off timer.....	11
8.9 Energy saving .....	12
8.10 Setting the temperature .....	12
8.11 Setting water hardness .....	12
8.12 Setting the language .....	12
8.13 Beep.....	12
8.14 Cup lighting .....	12
8.15 Default values (reset) .....	12
8.16 Statistics function.....	13
<b>9. MAKING COFFEE.....</b>	<b>13</b>
9.1 Selecting the coffee taste .....	13
9.2 Selecting the quantity of coffee in the cup.....	13
9.3 Customising the "my coffee" quantity.....	13
9.4 Adjusting the coffee mill .....	13
9.5 Tips for a hotter coffee.....	13
9.6 Making coffee using coffee beans .....	14
9.7 Making coffee using pre-ground coffee.....	14
<b>10. MAKING CAPPUCCINOS AND MILK-BASED COFFEES .....</b>	<b>14</b>
10.1 Filling and attaching the milk container.....	14
10.2 Adjusting the amount of froth.....	15
10.3 Making cappuccinos and milk-based coffees automatically .....	15
10.4 Cleaning the milk frother using the CLEAN function .....	15
10.5 Programming the quantity of coffee and milk in the cup for the FLAT WHITE, CAPPUCCINO, LATTE and MILK buttons. ....	15
<b>11. DELIVERING HOT WATER AND STEAM .....</b>	<b>15</b>
11.1 Hot water delivery.....	16
11.2 Changing the quantity of water delivered automatically .....	16
11.3 Steam delivery .....	16
11.4 Tips for using steam to froth milk.....	16
11.5 Cleaning the spout after use.....	16
<b>12. CLEANING.....</b>	<b>16</b>
12.1 Cleaning the machine .....	16
12.2 Cleaning the machine's internal circuit .....	17
12.3 Cleaning the coffee grounds container .....	17
12.4 Cleaning the drip tray and condensate tray.....	17
12.5 Cleaning the inside of the coffee machine.....	17
12.6 Cleaning the water tank.....	17
12.7 Cleaning the coffee spouts .....	17
12.8 Cleaning the pre-ground coffee funnel .....	18
12.9 Cleaning the infuser .....	18
12.10 Cleaning the milk container .....	18
12.11 Cleaning the hot water/steam connection nozzle.....	19
<b>13. DESCALING .....</b>	<b>19</b>
<b>14. SETTING WATER HARDNESS .....</b>	<b>20</b>
14.1 Measuring water hardness .....	20
14.2 Setting water hardness .....	20
<b>15. WATER SOFTENER FILTER .....</b>	<b>20</b>
15.1 Installing the filter .....	20
15.2 Replacing the filter.....	21
15.3 Removing the filter .....	21
<b>16. TECHNICAL DATA.....</b>	<b>21</b>
<b>17. DISPOSAL .....</b>	<b>21</b>
<b>18. DISPLAYED MESSAGES.....</b>	<b>22</b>
<b>19. TROUBLESHOOTING .....</b>	<b>23</b>
<b>20. ELECTRICAL REQUIREMENTS (UK ONLY).....</b>	<b>25</b>

## 1. FUNDAMENTAL SAFETY WARNINGS

---

- Appliances can be used by persons with reduced physical, sensory or mental capabilities or lack of experience and knowledge if they have been given supervision or instruction concerning use of the appliance in a safe way and understand the hazards involved.
- Children shall not play with the appliance.
- Never clean by immersing the appliance in water.
- This is an household appliance only. It is not intended to be used in: staff kitchen areas in shops, offices and other working environments; farm houses; by clients in hotels, motels and other residential type environments; bed and breakfast type environments.
- If the plug or cord is damaged, it must be replaced by Customer Services only to avoid all risk.

### FOR EUROPEAN MARKETS ONLY:

- Always unplug the appliance when left unattended and before assembly, taking apart or cleaning.
- This appliance shall not be used by children. Keep the appliance and its cord out of reach of children.
- Appliances can be used by persons with reduced physical, sensory or mental capabilities or lack of experience and knowledge if they have been given supervision or instruction concerning use of the appliance in a safe way and if they understand the hazards involved.
- Children shall not play with the appliance.



Surfaces marked with this symbol become hot during use (the symbol is present in certain models only).



## 2. SAFETY WARNINGS

### 2.1 Symbols used in these instructions

Important warnings are identified by these symbols. It is vital to respect these warnings.



#### **Danger!**

Failure to observe the warning may result in life threatening injury by electric shock.



#### **Important!**

Failure to observe the warning could result in injury or damage to the appliance.



#### **Danger of burns!**

Failure to observe the warning could result in scalds or burns.



#### **Please note:**

This symbol identifies important advice or information for the user.



#### **Danger!**

This is an electrical appliance and may cause electric shock.

You should therefore follow these safety warnings:

- Never touch the appliance with damp hands or feet.
- Never touch the plug with damp hands.
- Make sure the socket used is freely accessible at all times, enabling the appliance to be unplugged when necessary.
- Unplug directly from the plug only. Never pull the cord as you could damage it.
- To disconnect the appliance completely you must unplug it from the mains socket.
- If the appliance is faulty, do not attempt to repair. Turn it off, unplug from the mains socket and contact Customer Services.
- Before cleaning the appliance, turn it off, unplug from the mains socket and allow to cool.



#### **Important:**

Keep all packaging (plastic bags, polystyrene foam) away from children.



#### **Danger of burns!**

This appliance produces hot water and steam may form while it is in operation.

Avoid contact with splashes of water or hot steam.

When the appliance is in operation, the cup shelf (A10) could become very hot.

### 2.2 Designated use

This appliance is designed and made to prepare coffee and heat drinks.

Any other use is considered improper and thus dangerous. The manufacturer is not liable for damage deriving from improper use of the appliance.

### 2.3 Instruction for Use

Read this Instruction for Use carefully before using the appliance. Failure to follow this Instruction for Use may result in burns or damage to the appliance.

The manufacturer is not liable for damage deriving from failure to respect this Instruction for Use.



#### **Please note:**

Keep this Instruction for Use. If the appliance is passed to other persons, they must also be provided with this Instruction for Use.

## 3. INTRODUCTION

Thank you for choosing this bean to cup espresso and cappuccino machine.

We hope you enjoy using your new appliance. Take a few minutes to read this Instruction for Use. This will avoid all risks and damage to the appliance.

### 3.1 Letters in brackets

The letters in brackets refer to the legend in the description of the appliance on pages 2-3.

### 3.2 Troubleshooting and repairs

In the event of problems, first try and resolve them by reading the information given in the sections "18. Displayed messages" and "19. Troubleshooting".



If this does not resolve the problem or you require further information, you should consult Customer Services by calling the number given on the annexed "Customer Service" sheet.

If your country is not among those listed on the sheet, call the number given in the guarantee. If repairs are required, contact De'Longhi Customer Services only. The addresses are given in the guarantee certificate provided with the machine.

## 4. DESCRIPTION

### 4.1 Description of the appliance



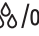
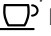
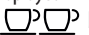

(page 3 - A )

- A1. Top lid
- A2. Beans container
- A3. Pre-ground coffee funnel lid with pressure closure
- A4. Pre-ground coffee funnel
- A5. Beans container lid
- A6. Grinding adjustment dial
- A7. Water tank
- A8. Tank lid
- A9. Water softener filter housing
- A10. Cup warmer shelf
- A11. Coffee spouts (adjustable height)
- A12. Hot water/steam connection nozzle
- A13. Power cord connector socket
- A14. Condensate tray
- A15. Cup tray
- A16. Drip tray
- A17. Drip tray water level indicator
- A18. Coffee grounds container
- A19. Infuser
- A20. Main switch
- A21. Infuser door
- A22. Infuser door catch
- A23.  button: turns the appliance on and off (standby)
- A24.  button: to enable or disable the cup warmer

### 4.2 Description of the control panel

(page 2 - B )

A number of buttons on the panel have a double function. This is indicated in brackets in the description.

- B1.  aroma selection button: to select the coffee taste
- B2.  button: to select the coffee quantity
- B3. **MENU** button to access the menu (*When in the settings menu, press to exit the menu*)
- B4. Display: guides the user in using the appliance
- B5.  /OK button: to deliver hot water (*When in the settings menu, press to confirm the selection*)
- B6.  button: to make 1 cup of coffee with the settings displayed
- B7.  button: to make 2 cups of coffee with the settings displayed
- B8.  button: to deliver steam (*When in the settings menu, press to scroll through the menu*)
- B9. **MILK** button: to deliver a cup of milk
- B10. **LATTE** button: to deliver a latte
- B11. **CAPPUCCINO** button: to deliver a cappuccino
- B12. **FLAT WHITE** button: to deliver a flat white (*When in the settings menu, press to scroll through the menu*)

### 4.3 Description of the accessories

(page 2 - C )

- C2. Pre-ground coffee measure
- C3. Descaler
- C4. Water softener filter (certain models only)
- C5. Cleaning brush
- C6. Cappuccino maker/hot water spout release button
- C7. Cappuccino maker/hot water spout
- C8. Power cord

### 4.4 Description of the milk container

(page 2 - D )

- D1. Froth adjustment and CLEAN dial
- D2. Milk container lid
- D3. Milk container
- D4. Milk intake tube
- D5. Frothed milk spout (adjustable)
- D6. Lid extraction button

## 5. BEFORE USE

### 5.1 Checking the appliance

After removing the packaging, make sure the product is complete and undamaged and that all accessories are present. Do not use the appliance if it is visibly damaged. Contact De'Longhi Customer Services.

### 5.2 Installing the appliance



#### Important!

When you install the appliance, you should respect the following safety warnings:

- The appliance gives off heat. After positioning the appliance on the worktop, leave a space of at least 3 cm between the surfaces of the appliance and the side and rear walls and at least 15 cm above the coffee maker.
- Water penetrating the coffee maker could cause damage. Do not place the appliance near taps or sinks.
- The appliance could be damaged if the water it contains freezes. Do not install the appliance in a room where the temperature could drop below freezing point.
- Arrange the cord in such a way that it cannot be damaged by sharp edges or contact with hot surfaces (e.g. electric hot plates).

### 5.3 Connecting the appliance



#### Important!

Check that the mains power supply voltage corresponds to that indicated on the rating plate on the bottom of the appliance.

Connect the appliance to an efficiently earthed and correctly installed socket with a minimum current rating of 10A only. If the power socket does not match the plug on the appliance, have the socket replaced with a suitable type by a qualified professional.


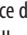
## 5.4 Setting up the appliance



### **Please note!**

- Coffee has been used to factory test the appliance and it is therefore completely normal for there to be traces of coffee in the mill. The machine is, however, guaranteed to be new.
  - You should customise water hardness as soon as possible following the instructions in section “14 Setting water hardness”.
1. Plug the power cord (C8) connector into the socket (A13) at the back of the appliance and connect the appliance to the mains electricity supply (fig. 1). Make sure the main switch (A20) on the side of the appliance is pressed (fig. 2).

You must first choose the language by moving backwards and forwards with the arrows < (B12) or > (B8) (fig. 9), or waiting until the languages scroll through on the display (B4) automatically at intervals of about 3 seconds:

2. When “English” appears, press and hold the /OK button (B5) (fig. 3) for a few seconds until “English set” is displayed.
- Follow the instructions indicated on the appliance display:
3. “FILL TANK”: remove the water tank (A7) (fig. 4), open the lid (A8) (fig. 5), fill to the MAX line with fresh water (fig. 6), replace the lid and put the tank back in the appliance.
  4. “INSERT WATER SPOUT”: Check that the hot water spout (C6) is inserted on the connection nozzle (A12) and place a container holding a minimum of 100ml underneath (fig. 7).
  5. “Water delivery Press OK” appears on the display;
  6. Press the /OK button to confirm. The appliance delivers water from the spout then goes off automatically.

The coffee machine is now ready for normal use.



### **Please note!**

- When setting up the appliance, you need to make 4-5 cups of coffee or 4-5 cappuccinos before the appliance starts to give satisfactory results.
- To enjoy your coffee even more and improve the performance of your appliance, we recommend installing a water softener filter (C4) as described in section “15. Water softener filter”. If your model is not provided with a filter, you can request one from De’Longhi Customer Services.

## 6. TURNING THE APPLIANCE ON



### **Please note!**

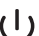
Before turning the appliance on, make sure the main switch (A20) is pressed (fig. 2).

Each time the appliance is turned on, it performs an automatic preheat and rinse cycle which cannot be interrupted. The appliance is ready for use only after completion of this cycle.



### **Danger of burns!**

During rinsing, a little hot water comes out of the coffee spouts (A11) and is collected in the drip tray (A16) underneath. Avoid contact with splashes of water.

- To turn the appliance on, press the  button (A23) (fig. 8). The message “Heating up Please wait” appears on the display (B4).

When heating is complete, the message changes to: “RINSING”; As well as heating the boiler, this also heats the internal circuits by circulating hot water.

The appliance is at temperature when the message indicating the taste and quantity of coffee appears.


## 7. TURNING THE APPLIANCE OFF

Whenever the coffee machine is turned off after being used to make coffee, it performs an automatic rinse cycle.



### **Danger of burns!**


During rinsing, a little hot water flows from the coffee spouts (A11). Avoid contact with splashes of water.

- To turn the appliance off, press the  button (A23) (fig. 8).
- The message “Turning off, Please wait” appears on the display (B4), then the appliance performs a rinse cycle and goes off (standby).



### **Please note!**

If you will not be using the appliance for some time, unplug from the mains socket:

- first turn the appliance off by pressing the  button (fig. 8);
- release the main switch at the side of the appliance (fig. 2).



### **Important!**


Never press the main switch while the appliance is on.

## 8. MENU SETTINGS

### 8.1 Rinsing

Use this function to deliver hot water from the coffee spouts (A11) and hot water spout (C6), if inserted, to clean and heat the appliance’s internal circuit. Place a container with a minimum capacity of 100ml under the coffee and hot water spouts.


To enable the function, proceed as follows:

1. Press the **MENU/ESC** button (B3) to enter the menu;
2. Press < (B12) or > (B8) (fig. 9) until "Rinsing" appears on the display (B4);
3. Press the /OK button (B5). The message "Confirm?" is displayed;



#### **Important! Danger of burns.**

Do not leave the appliance unattended while hot water is being delivered.

4. Press the /OK button (fig. 3): after a few seconds, hot water is delivered first from the coffee spouts (A11) and then from the hot water spout (C6) (if inserted). This cleans and heats the appliance's internal circuit.



#### **Please note!**

- To stop delivery at any time, press any button.
- If the appliance is not used for more than 3-4 days, we strongly recommend, when switching on the appliance, performing 2/3 rinses before using it.

## **8.2 Descale**

For instructions on descaling, see section "13. Descaling".

## **8.3 Install filter**




For instructions on how to install the filter (C4), see section "15.1 Installing the filter".

## **8.4 Replacing the water softener filter (if installed)**

For instructions on how to replace the filter (C4), see the section "15.2 Replacing the filter".

## **8.5 Adjust time**

To adjust the time on the display (B4), proceed as follows:

1. Press the **MENU/ESC** button (B3) to enter the menu;
2. Press < (B12) or > (B8) (fig. 9) until "Adjust time" is displayed;
3. Press the /OK button (B5) (fig. 3): the hours flash on the display;
4. Press < or > (fig. 8) to change the hour;
5. Press the /OK button to confirm. The minutes flash;
6. Press < or > (fig. 9) to change the minutes;
7. Press the /OK button to confirm.

The time is set. Press the **MENU/ESC** button to exit the menu.

## **8.6 Auto-start**




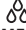
You can set the auto-start time in order to have the appliance ready at a certain time (for example in the morning) so you can make coffee immediately.




#### **Please note!**




To enable this function, the time must already be set correctly.

Per attivare l'autoaccensione, procedere come segue:

1. Press the **MENU/ESC** button (B3) to enter the menu;
2. Press < (B12) or > (B8) (fig. 9) until "Auto-start" appears on the display (B4);
3. Press the /OK button (B5). "Enable?" appears on the display;
4. Press the /OK button to confirm;
5. Press < or > to choose the hour;
6. Press the /OK button to confirm;
7. Press < or > to change the minutes;
8. Press the /OK button to confirm;
9. Press the **MENU/ESC** button to exit the menu.

Once the time has been confirmed, activation of auto-start is indicated by the  symbol displayed alongside the time.

To disable the function:

1. Select auto-start from the menu;
  2. Press the /OK button. "Disable?" appears on the display;
  3. Press the /OK button to confirm.
- The  symbol is no longer displayed.

## **8.7 Auto-off**

When this function is enabled:



- the appliance goes off completely automatically when the main switch (A20) is released. To turn the appliance on again, press the main switch and then the ON/stand-by button (A23).

When this function is disabled:

- the appliance switches to stand-by; power remains on and it consumes a minimal amount of electricity. To turn the appliance on again, press the ON/stand-by button (A23).

The stand-by time can be modified using the "Auto-off timer" (if "auto-off" is enabled) or "Auto-standby timer" (if "auto-off" is disabled) item in the menu.

To enable or disable auto-off, proceed as follows:

1. Press the **MENU/ESC** button (B3) to enter the menu;
2. Press < (B12) or > (B8) (fig. 9) until "Auto-standby timer" (or Auto-off) appears on the display (B4);
3. Press the /OK button (B5). "Enable?" or "Disable?" appears on the display;
4. Press the /OK button to confirm;
5. Press the **MENU/ESC** button to exit the menu.

## **8.8 Auto-standby timer/ auto-off timer**

Auto-off can be set so that the appliance goes off after 15 or 30 minutes, or 1, 2 or 3 hours.

To programme Auto-off, proceed as follows:

1. Press the **MENU/ESC** button (B3) to enter the menu;
  2. Press < (B12) or > (B8) (fig. 9) until "Auto-standby timer" or "Auto-off timer" appears on the display (B4);
  3. Press the  $\Delta\Delta$ /OK button (B5);
  4. Press < or > until the number of minutes/hours of operation appears on the display (15 or 30 minutes, or 1, 2 or 3 hours);
  5. Press the  $\Delta\Delta$ /OK button to confirm;
  6. Press the **MENU/ESC** button to exit the menu.
- Auto-off is now programmed.

## 8.9 Energy saving

Use this function to enable or disable energy saving. When enabled, the function reduces energy consumption in compliance with European regulations.

To disable (or enable) energy saving, proceed as follows:

1. Press the **MENU/ESC** button (B3) to enter the menu;
2. Press < (B12) or > (B8) (fig. 9) until "Energy Saving" appears on the display (B4);
3. Press the  $\Delta\Delta$ /OK button (B5). "Disable?" appears on the display (or "Enable?" if the function has been disabled);
4. Press the  $\Delta\Delta$ /OK button to disable (or enable) energy saving mode;
5. Press the **MENU/ESC** button to exit the menu.

When the function is active, if the machine is not used for some time, "Energy Saving" appears on the display.



### **Please note!**

- When in energy saving mode, a few seconds elapse before the first coffee, cappuccino or milk-based coffee is delivered as the appliance must heat up again.
- To prepare any drink, press any button to exit energy saving, then press the button corresponding to the drink you want to make.
- If the milk container is inserted, "Energy saving" is not activated.

## 8.10 Setting the temperature

To modify the temperature of the water used to make the coffee, proceed as follows:

1. Press the **MENU/ESC** button (B3) to enter the menu;
2. Press < (B12) or > (B8) (fig. 9) until "Set temperature" appears on the display (B4);
3. Press the  $\Delta\Delta$ /OK button (B5);
4. Press < or > until the required temperature is displayed (●=low; ●●●●=maximum);
5. Press the  $\Delta\Delta$ /OK button to confirm;
6. Press the **MENU/ESC** button to exit the menu.

## 8.11 Setting water hardness

For instructions on setting water hardness, see section "14. Setting water hardness".

## 8.12 Setting the language

To modify the language of the display (B4), proceed as follows:

1. Press the **MENU/ESC** button (B3) to enter the menu;
2. Press < (B12) or > (B8) (fig. 9) until "Set language" appears on the display;
3. Press the  $\Delta\Delta$ /OK button (B5);
4. Press < or > until the required language is displayed;
5. Press the  $\Delta\Delta$ /OK button to confirm;
6. A message confirming the language installed is displayed;
7. Press the **MENU/ESC** button to exit the menu.

## 8.13 Beep

This enables or disables the beep emitted by the machine each time a button is pressed or an accessory is inserted/removed. To disable or re-enable the beep, proceed as follows:

1. Press the **MENU/ESC** button (B3) to enter the menu;
2. Press < (B12) or > (B8) (fig. 9) until "Beep" appears on the display (B4);
3. Press the  $\Delta\Delta$ /OK button (B5). "Disable?" (or "Enable?" if disabled) is displayed;
4. Press the  $\Delta\Delta$ /OK button to enable or disable the beep;
5. Press the **MENU/ESC** button to exit the menu.

## 8.14 Cup lighting

This function enables or disables the cup lights. The lighting is enabled by default.

The lights come on each time a coffee or milk-based drink is made and during each rinsing cycle.

To disable or enable this function, proceed as follows:



1. Press the **MENU/ESC** button (B3) to enter the menu;
2. Press < (B12) or > (B8) (fig. 9) until "Cup lighting" appears on the display (B4);
3. Press the  $\Delta\Delta$ /OK button (B5). "Disable?" (or "Enable?" if disabled) is displayed;
4. Press the  $\Delta\Delta$ /OK button to enable or disable the cup lighting;
5. Press the **MENU/ESC** button to exit the menu.

## 8.15 Default values (reset)

This resets all menu settings and programmed quantities back to the default values (with the exception of the language which remains as set).


To reset the default values, proceed as follows:

1. Press the **MENU/ESC** button (B3) to enter the menu;
2. Press < (B12) or > (B8) (fig. 9) until "Default values" appears on the display (B4);

3. Press the /OK button (B5);
4. The message "Confirm?" appears on the display;
5. Press the /OK button to confirm and exit.

### 8.16 Statistics function

This displays statistics relating to the machine. To display the statistics, proceed as follows:

1. Press the **MENU/ESC** button (B3) to enter the menu;
2. Press < (B12) or > (B8) (fig. 9) until "Statistics" appears on the display (B4);
3. Press the /OK button (B5);
4. By pressing < or > (fig. 9), you can check:
  - how many coffees have been made;
  - the total number of cappuccinos and milk-based coffees made;
  - the total number of litres of water delivered;
  - how many times the machine has been descaled;
  - how many times the water softener filter has been replaced.
5. Press the **MENU/ESC** button twice to exit the menu.

## 9. MAKING COFFEE

### 9.1 Selecting the coffee taste

The appliance is set by default to make coffee with a standard taste.

You can also choose one of these tastes:

Extra mild taste

Mild taste


Standard taste

Strong taste

Extra-strong taste

To change the taste, press the  button (B1) (fig. 10) repeatedly until the required taste appears on the display (B4).

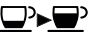
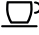

### 9.2 Selecting the quantity of coffee in the cup

The appliance is set by default to make a standard quantity of coffee. To select the quantity of coffee, press the  button (B2) (fig. 11) until the message corresponding to the required quantity of coffee appears on the display (B4):

Coffee selected	Quantity in cup (ml)
MY COFFEE	Programmable: from ≈20 to ≈180
SHORT	≈40
STANDARD	≈60
LONG	≈90
EXTRA LONG	≈120

### 9.3 Customising the "my coffee" quantity

The appliance is set by default to automatically deliver 30 ml of "MY COFFEE". To modify this quantity, proceed as follows:

1. Place a cup under the coffee spouts (A11) (fig. 12).
2. Press the  button (B2) (fig. 11) until "MY COFFEE" is displayed.
3. Press and hold the  button (B6) (fig. 15) until the message "Program quantity 1 MY COFFEE" appears on the display (B4) and coffee delivery begins. Release the button;
4. As soon as the coffee in the cup reaches the required level, press the  button again.

The quantity of coffee in the cup has now been programmed.

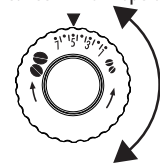
### 9.4 Adjusting the coffee mill

The coffee mill is set by default to prepare coffee correctly and should not require regulating initially.

However, if after making the first few coffees you find that the coffee is either too weak and not creamy enough or delivery is too slow (a drop at a time), this can be corrected by adjusting the grinding adjustment dial (A6) (fig. 13).

#### Please note!

The grinding adjustment dial must only be turned when the coffee mill is in operation.



If the coffee is delivered too slowly or not at all, turn one click clockwise towards "7".

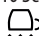

For fuller bodied creamier coffee, turn one click anticlockwise towards "1" (do not turn more than one click at a time

otherwise the coffee could be delivered a drop at a time).

These adjustments will only be evident after at least 2 cups of coffee have been delivered. If this adjustment does not obtain the desired result, turn the dial another click.

### 9.5 Tips for a hotter coffee

For hotter coffee, you should:

- perform a rinse cycle by selecting the "Rinse" function in the settings menu (see section "8.1 Rinsing");
- warm the cups with hot water (using the hot water function);
- set a hotter coffee temperature in the settings menu (see section "8.10 Setting the temperature");
- press the  button (A24) to enable the cup warmer shelf (A10) (the  symbol appears on the display, B4).

## 9.6 Making coffee using coffee beans



Do not use caramelised or candied coffee beans as they could stick to the coffee mill and make it unusable.

1. Fill the container (A2) (fig. 14) with coffee beans;
2. Place under the coffee spouts (A11):
  - 1 cup, if you want to make 1 coffee (fig. 15);
  - 2 cups, if you want 2 coffees (fig. 17);
3. Lower the spouts as near as possible to the cup (fig. 16). This makes a creamier coffee;
4. Press the button corresponding to the number of coffees required ( B6 for 1 cup, or B7 for 2 cups);
5. Preparation begins. The amount of coffee selected appears on the display (B4) together with a progress bar which gradually fills as preparation progresses.



- While the machine is making coffee, delivery can be interrupted at any moment by pressing any button.
- At the end of delivery, to increase the quantity of coffee in the cup, just press and hold (within 3 seconds) one of the coffee buttons ( or ).

Once the coffee has been made, the appliance is ready to make the next drink.



- Various alarm messages could be displayed while using the appliance (fill tank, empty grounds container, etc.). Their meaning is explained in section "18. Displayed messages";
- For hotter coffee, see the section "Tips for a hotter coffee";
- If the coffee is delivered a drop at a time, too weak and not creamy enough or too cold, read the tips in the section "Troubleshooting".

## 9.7 Making coffee using pre-ground coffee



- Never add pre-ground coffee when the machine is off or it could spread through the inside of the machine and dirty it. This could damage the appliance.
- Never use more than 1 level measure (C2) or it could dirty the inside of the coffee machine or block the funnel (A4).



If you use pre-ground coffee, you can only make one cup of coffee at a time.

1. Press the button (B1) (fig. 10) until "Pre-ground" appears on the display (B4).
2. Open the top lid (A1), then open and raise the pre-ground coffee funnel lid (A3).

3. Make sure the funnel is not blocked, then add one level measure of pre-ground coffee (fig. 18).
4. Place a cup under the coffee spouts (fig. 16).
5. Press the 1 cup coffee button (B6) (fig. 15).
6. Preparation begins. The amount of coffee selected is displayed together with a progress bar which gradually fills as preparation progresses.



If "Energy Saving" mode is active, you may have to wait a few seconds before the first coffee is delivered.

## 10. MAKING CAPPUCCINOS AND MILK-BASED COFFEES



- To avoid producing milk with poor froth or large bubbles, always clean the milk container lid (B12) and hot water connection nozzle (D2) as described in sections "10.4 Cleaning the milk container using CLEAN", "12.10 Cleaning the milk container" and "12.11 Cleaning the hot water/steam connection nozzle".

### 10.1 Filling and attaching the milk container

1. Remove the lid (D2) by pressing the lid extraction button (D6) and at the same time lifting the lid upwards (fig. 19);
2. Fill the milk container (D3) with a sufficient quantity of milk, not exceeding the MAX level marked on the container (fig. 20). Each mark on the side of the container corresponds to about 100 ml of milk.





- For a denser more even froth, you must use skimmed or partially skimmed milk at refrigerator temperature (about 5°C).
  - If "Energy saving" mode is enabled, you may have to wait a few seconds before the drink is delivered.
3. Make sure the milk intake tube (D4) is correctly inserted into the bottom of the milk container lid (fig. 21);
  4. Replace the lid on the milk container and press downwards until it clicks in place;
  5. Extract the hot water spout (C6) by pressing the button (C7) on the spout (fig. 22A);
  6. Attach the milk container to the connection nozzle (A12) and push as far as it will go (fig. 23). The machine emits a beep (if the beep function is enabled);
  7. Place a sufficiently large cup under the coffee spouts (A11) and frothed milk spout (D5). Adjust the length of the milk spout. To move it nearer the cup, simply pull it downwards (fig. 24);
  8. Follow the instructions below for each function.



## 10.2 Adjusting the amount of froth

Turn the froth adjustment dial (D1) to adjust the amount of froth on the milk delivered while making cappuccinos and milk-based coffees.

Dial position	Description	Recommended for...
	No froth	FLAT WHITE/ MILK (hot milk)
	Min. froth	LATTE
	Max. froth	CAPPUCCINO / MILK (frothed milk)

## 10.3 Making cappuccinos and milk-based coffees automatically

The FLAT WHITE, CAPPUCCINO, LATTE and MILK buttons on the control panel (B) enable these drinks to be prepared automatically. Proceed as follows:

1. Fill the milk container (D) and attach it as described above;
2. Turn the froth adjustment dial (D1) on the milk container lid (D2) to the position corresponding to the required froth;
3. Press the button corresponding to the required drink. The name of the drink selected appears on the display (B4) together with a progress bar which gradually fills as preparation progresses;
4. After a few seconds, frothed milk is delivered from the milk spout (D5) into the cup below. For drinks with coffee, the machine automatically makes the coffee after delivering the milk.



### **Please note!**

- If you want to interrupt preparation during delivery, press any button.
- At the end of delivery, to increase the quantity of milk or coffee in the cup, just press and hold (within 3 seconds) the button corresponding to the drink being made.
- Do not leave the milk container out of the refrigerator for long periods. The warmer the milk (5°C is ideal), the poorer the quality of froth produced.

## 10.4 Cleaning the milk frother using the CLEAN function



### **Important! Danger of burns**

When cleaning the internal tubes of the milk container (D), a little hot water and steam leak out of the frothed milk spout (D5). Avoid contact with splashes of water.

“SET DIAL TO CLEAN” appears on the display (B4) each time you use a milk function. To eliminate all milk residues, proceed as follows:

1. Leave the milk container in the machine (you do not need to empty it);
2. Place a cup or other recipient under the frothed milk spout;
3. Turn the froth adjustment dial (D1) to “CLEAN” (fig. 25). A progress bar appears on the display and gradually fills as the operation proceeds together with the message “Cleaning underway, Please wait”. Cleaning stops automatically;
4. Turn the dial back to one of the froth selections;
5. Remove the milk container and always clean the steam connection nozzle (A12) with a sponge (fig. 26).



### **Please note!**

- To prepare a number of cappuccinos or milk-based coffees, clean the milk container after you have prepared the last drink only.
- The milk container can be kept in the refrigerator.
- In some cases, before cleaning you must wait for the appliance to heat up.

## 10.5 Programming the quantity of coffee and milk in the cup for the FLAT WHITE, CAPPUCCINO, LATTE and MILK buttons.

The appliance is set by default to automatically deliver standard quantities. To change these quantities, proceed as follows:

1. Place a cup under the coffee spouts (A11) and milk spout (D5);
2. Press and hold one of the function buttons until the message “PROGRAM MILK Program quantity” appears on the display (B4);
3. Release the button. The appliance starts delivering milk;
4. Once the required quantity of milk has been delivered into the cup, press the button again;
5. The appliance stops delivering milk and, if required for the beverage being prepared, after a few seconds the coffee is delivered into the cup. “PROGRAM COFFEE Program quantity” is displayed;
6. Once the required quantity of coffee has been delivered into the cup, press the button again. Coffee delivery stops.

The machine is now reprogrammed with the new milk and coffee quantities.

## 11. DELIVERING HOT WATER AND STEAM



### **Important! Danger of burns.**



Do not leave the appliance unattended while hot water or steam is being delivered. The spout becomes hot during delivery. Hold by the handle only.



### **Please note!**




If “Energy Saving” is active, you may have to wait a few seconds before hot water and steam are delivered.

#### 11.1 Hot water delivery

1. Make sure the hot water spout (C6) is attached correctly (fig. 7);
2. Place a container under the spout (as close as possible to avoid splashes);
3. Press the /OK button (B5) (fig. 3). “Preparation underway” appears on the display (B4) (if provided for). Hot water is then delivered and “HOT WATER” is displayed, together with a progress bar which fills gradually as preparation proceeds;
4. The machine delivers about 250 ml of hot water, then delivery stops automatically. To interrupt delivery of hot water manually, press the /OK button again.



#### 11.2 Changing the quantity of water delivered automatically

The machine is set by default to automatically deliver 250 ml of hot water. To modify these quantities, proceed as follows:

1. Position a container under the hot water spout (C6) (fig. 2);
2. Press and hold the /OK button (B5) until “HOT WATER Program quantity” appears on the display (B4), then release the /OK button;
3. When the hot water in the cup reaches the required level, press the /OK button again.

The machine is now reprogrammed with the new quantity.

#### 11.3 Steam delivery

1. Make sure the hot water spout (C6) is attached correctly (fig. 7);
2. Fill a container with the liquid to be heated/frothed and immerse the spout in the liquid;
3. Press the  button (B8). After a few seconds, the steam to heat the liquid comes out of the spout and “STEAM” appears on the display (B4);
4. When the required temperature is obtained, interrupt steam delivery by pressing the  button again. (You should not discharge steam for more than 3 minutes at a time).

### **Important!**



Always stop steam delivery before extracting the container containing the liquid to avoid burns from splashes.

#### 11.4 Tips for using steam to froth milk

- When choosing the size of the container, bear in mind that the liquid doubles or triples in volume;
- For a richer denser froth, use skimmed or partially skimmed milk at refrigerator temperature (about 5°C);
- For a creamier froth, rotate the container with slow movements in an upward direction;
- To avoid milk with poor froth or large bubbles, always clean the spout (C6) as described in the following section.

#### 11.5 Cleaning the spout after use

Always clean the hot water spout (C6) after use to avoid the build-up of milk residues and prevent it from clogging.

1. Place a container under the hot water spout and press the /OK button (B5) to deliver a little water. Stop hot water delivery by pressing the /OK button again;
2. Wait a few minutes for the hot water spout to cool down, then press the button (C7) on the hot water spout and remove it (fig. 22A). Hold the spout with one hand and with the other, turn the cappuccino maker anticlockwise (fig. 22B) and pull downwards to remove;
3. Also remove the steam connection nozzle by pulling it downwards (fig. 27A);
4. Check the hole shown by the arrow in fig. 27B is not blocked. If necessary, clean with a pin;
5. Wash all parts of the spout thoroughly with a sponge and warm water;
6. Reinsert the nozzle and replace the cappuccino maker on the nozzle, pushing it upwards and turning it until it is attached.

## 12. CLEANING

### 12.1 Cleaning the machine

The following parts of the machine must be cleaned regularly:


- the appliance's internal circuit;
- coffee grounds container (A18);
- drip tray (A16) and condensate tray (A14);
- water tank (A7);
- coffee spouts (A11);
- pre-ground coffee funnel (A4);
- infuser (A19), accessible after opening the infuser door (A21);
- milk container (D);
- cappuccino maker/hot water spout (C6 - section “11.5 Cleaning the spout after use”);
- hot water/steam connection nozzle (A12);
- display (B).

### **Important!**

- Do not use solvents, abrasive detergents or alcohol to clean the coffee machine. With De'Longhi superautomatic coffee machines, you need not use chemical products to clean the machine.
- None of the components of the appliance can be washed in a dishwasher with the exception of the milk container (D).
- Do not use metal objects to remove encrustations or coffee deposits as they could scratch metal or plastic surfaces.

## 12.2 Cleaning the machine's internal circuit

If the appliance is not used for more than 3/4 days, before using it again, we strongly recommend switching it on and:

- performing 2-3 rinse cycles by selecting the "Rinse" function in the settings menu (see section "8.1 Rinsing");
- deliver hot water for a few seconds by pressing the  /OK button (B5).

### **Please note!**

- After cleaning, it is normal for the coffee grounds container (A18) to contain water.

## 12.3 Cleaning the coffee grounds container

When "EMPTY GROUNDS CONTAINER" appears on the display (B4), the grounds container MUST be emptied and cleaned. The appliance cannot be used to make coffee until you have cleaned the grounds container (A18). Even if not full, the empty grounds container message is displayed 72 hours after the first coffee has been prepared. For the 72 hours to be calculated correctly, the machine must never be turned off with the main switch.

### **Important! Danger of burns**

If you make a number of cappuccinos one after the other, the cup warmer shelf (A10) becomes hot. Wait for it to cool down before touching it and handle from the front only.

To clean (with the machine on):

- Remove the drip tray (A16) (fig. 28), empty and clean;
- Empty the grounds container and clean thoroughly to remove all residues left on the bottom. This can be done with the spatula on the brush (C5) provided;
- Check the condensate tray (A14) and empty if necessary (fig. 29).

### **Important!**

When removing the drip tray, the grounds container must be emptied, even if it contains few grounds. If this is not done, when you make the next coffees, the grounds container may fill up more than expected and clog the machine.

## 12.4 Cleaning the drip tray and condensate tray

### **Important!**

The drip tray (A16) is fitted with a level indicator (red) (A17) showing the level of water it contains (fig. 30). Before the indicator protrudes from the cup tray (A15), the drip tray must be emptied and cleaned, otherwise the water may overflow the edge and damage the appliance, the surface it rests on or the surrounding area.

To remove the drip tray:

1. Remove the drip tray and the coffee grounds container (A18) (fig. 28);
2. Empty the drip tray and grounds container and wash them;
3. Check the condensate tray (A14) and empty if necessary;
4. Replace the drip tray and grounds container.

## 12.5 Cleaning the inside of the coffee machine

### **Danger of electric shock!**

Before cleaning internal parts, the machine must be turned off (see section "7. Turning the appliance off") and unplugged from the mains power supply. Never immerse the coffee machine in water.

1. Check regularly (about once a month) that the inside of the appliance (accessible after removing the drip tray, A16) is not dirty. If necessary, remove coffee deposits with the brush (C5) or a sponge;
2. Remove all the residues with a vacuum cleaner (fig. 31).

## 12.6 Cleaning the water tank

1. Clean the water tank (A7) regularly (about once a month) and whenever you replace the water softener filter (C4, if provided) with a damp cloth and a little mild washing up liquid;
2. Remove the filter (if present) and rinse with running water;
3. Replace the filter (if provided), fill the tank with fresh water and replace the tank;
4. (Models with water softener filter only) Deliver about 100 ml of hot water to reactivate the filter.

## 12.7 Cleaning the coffee spouts

1. Clean the coffee spouts (A11) regularly with a sponge or cloth (fig. 32);
2. Check that the holes in the coffee spouts (A11) are not blocked. If necessary, remove coffee deposits with a toothpick (fig. 33).

## 12.8 Cleaning the pre-ground coffee funnel

Check regularly (about once a month) that the pre-ground coffee funnel (A4) is not blocked. If necessary, remove coffee deposits with the brush (C5) supplied.

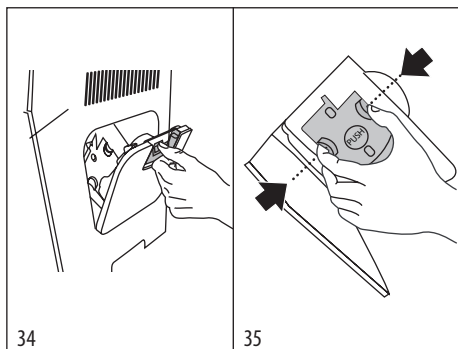
## 12.9 Cleaning the infuser

The infuser (A19) must be cleaned at least once a month.



The infuser may not be extracted when the machine is on.

1. Make sure the machine is correctly turned off (see section "7. Turning the appliance off");
2. Open the infuser door (A21) (fig. 34) on the right side of the appliance;



4. Press the two coloured release buttons inwards and at the same time pull the infuser outwards (fig. 35);
5. Soak the infuser in water for about 5 minutes, then rinse under the tap;

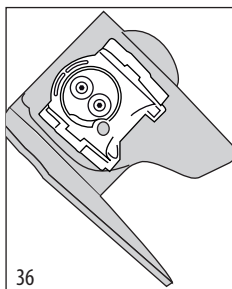


**RINSE WITH WATER ONLY**

**NO WASHING UP LIQUID - NO DISH WASHER**

Clean the infuser without using washing up liquid as it could be damaged.

6. Use the brush (C5) to remove any coffee residues left in the infuser housing, visible through the infuser door;

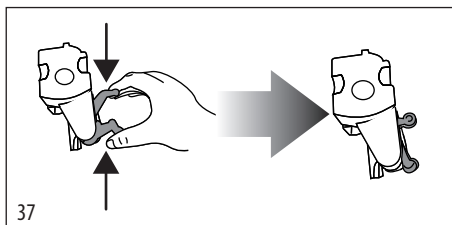


36

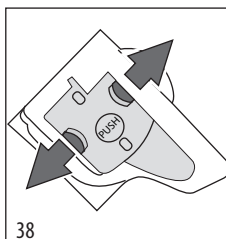
7. After cleaning, replace the infuser by sliding it onto the internal support (fig. 36), then push the PUSH symbol fully in until it clicks into place;

**Please note!**

If the infuser is difficult to insert, before insertion, adapt it to the right size by pressing the two levers shown in fig.



37



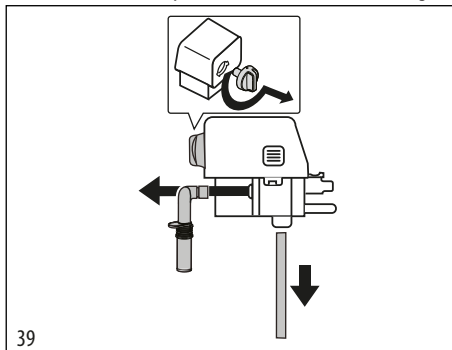
38

8. Once inserted, make sure the two coloured buttons have snapped out (fig. 38);
9. Close the infuser door.

## 12.10 Cleaning the milk container

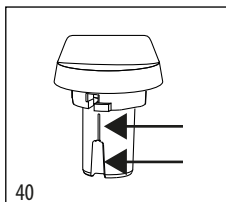
Clean the milk container (D) each time you prepare milk as described below:

1. Remove the lid (D2);
2. Remove the milk spout (D5) and intake tube (D4) (fig. 39);



39

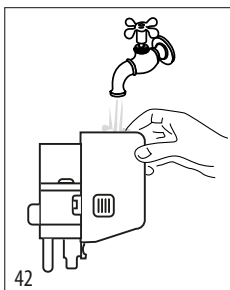
3. Turn the froth adjustment dial anticlockwise to the "INSERT" position (fig. 39) and pull off upwards;



40

Wash all the components thoroughly with hot water and mild washing-up liquid. All components are dishwasher safe, placing them in the top basket of the dishwasher.

Make sure there are no milk residues on the hollow and groove under the dial (fig. 40). If necessary, scrape the groove with a toothpick.



5. Rinse inside the froth adjustment dial seat with running water (fig. 42).
6. Check that the intake tube and spout are not clogged with milk residues.

7. Replace the dial (lining up the arrow with the word "INSERT"), spout and milk intake tube.
8. Place the lid back on the milk container (D3).

### 12.11 Cleaning the hot water/steam connection nozzle

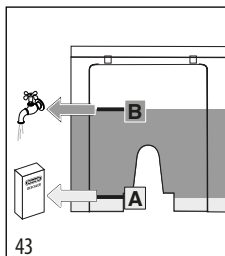
Each time you prepare milk, clean the connection nozzle (A12) with a sponge to remove milk residues from the gaskets (fig. 26).

## 13. DESCALING

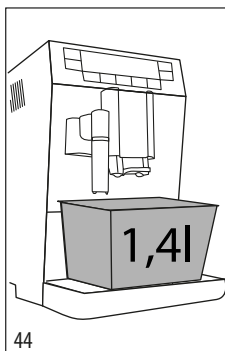
Descalc the machine when the message "DESCALE" flashes on the display (B4) together with the "⚡" symbol.



- Before use, read the instructions and the labelling on the descaler pack.
  - You should use De'Longhi descaler only. Using unsuitable descaler and/or performing descaling incorrectly may result in faults not covered by the manufacturer's guarantee.
1. Turn the appliance on and wait until it is ready for use.
  2. Press the **MENU/ESC** button (B3) to access the menu.
  3. Press < (B12) or > (B8) until "Descaling" is displayed.
  4. Select by pressing the **⏏/OK** button (B5). "Confirm?" is displayed. Press the **⏏/OK** button to confirm.
  5. "EMPTY DRIP TRAY" is displayed, alternating with "REMOVE FILTER" (if the filter is present) and "Add descaler Press OK".
  6. Empty the water tank (A7) completely and remove the water softener filter (C4) (if present). Empty the drip tray (A16) (fig. 28) and grounds container (A18), then put them back in the appliance.



7. Pour the descaler into the tank up to level A (corresponding to a 100 ml pack) marked on the back of the tank (fig. 43), then add water (1 litre) up to level B (fig. 43) and put the water tank back.




8. Place an empty container with a minimum capacity of 1.4 litres under the hot water spout (C6) (fig. 44).



### **Important! Danger of burns**

Hot water containing acid flows out of the hot water spout. Avoid contact with splashes of water.


9. Press the **⏏/OK** button to confirm that you have added the solution. The descale programme automatically performs a series of rinses and pauses to remove limescale deposits from inside the machine. The message "DESCALING" is displayed. The descale programme starts and the descaler liquid comes out of the water spout. After about 30 minutes, the message "RINSING, FILL TANK" is displayed.
10. The appliance is now ready for rinsing through with clean water. Remove the water tank, empty, rinse under running water, fill with fresh water up to the MAX level and put back in the appliance: the message "RINSING, Press OK" is displayed.
11. Empty the container used to collect the descaler solution and replace it empty under the hot water spout.
12. Press the **⏏/OK** button to start rinsing. Hot water flows out of the spout and the message "RINSING, Please wait" is displayed.
13. When the water tank is completely empty, the messages "RINSING", "REPLACE FILTER" (if previously removed) and "FILL TANK" alternate on the display.
14. Remove the water tank, replace the filter (if previously removed), fill the tank up to the MAX level with fresh water and insert it in the appliance: the display will show "RINSE Press OK".

15. Empty the container used to collect the rinsing water and replace it, empty, under the hot water spout and coffee spouts (A11).
16. Press the  /OK button to restart rinsing: the message "RINSING Please wait" appears on the display and water is delivered first from the hot water spout, then from the coffee spouts.



**Important! Danger of burns.**

Do not leave the appliance unattended while hot water is being delivered.

17. When the water tank is completely empty, the message "Rinsing Complete, Press OK" is displayed.
18. Press the  /OK button.
19. The message "FILL TANK" appears on the display; when the tank is filled and replaced the message "Heating please wait" appears on the display, after which the machine is ready to use.



**Please note!**

- If the descaling cycle is not completed correctly (e.g. no electricity) we recommend repeating the cycle.
- After descaling, it is normal for the grounds container (A18) to contain water.

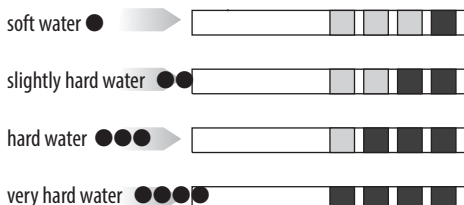
## 14. SETTING WATER HARDNESS

The DESCAL message appears on the display after a period of time established according to water hardness.



The machine is set by default for a hardness value of 4. The machine can also be programmed according to the hardness of the mains water in the various regions so that the machine needs to be descaled less often.

### 14.1 Measuring water hardness

1. Remove the "TOTAL HARDNESS TEST" indicator paper (C1) from its pack (attached to the English instructions).
2. Immerse the paper completely in a glass of water for one second.
3. Remove the paper from the water and shake lightly. After about a minute, 1, 2, 3, or 4 red squares form, depending on the hardness of the water. Each square corresponds to one level.



## 14.2 Setting water hardness

1. Press the **MENU/ESC** button (B3) to enter the menu.
2. Press < (B12) or > (B8) and select "Water hardness".
3. Confirm the selection by pressing the  /OK button (B5).
4. Press < or > repeatedly to set the level as measured by the indicator paper (see previous section).
5. Press the  /OK button to confirm the setting.
6. Press the **MENU/ESC** button to exit the menu.

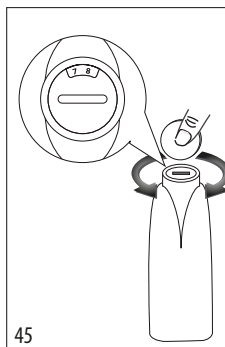
The machine is now reprogrammed with the new water hardness setting.

## 15. WATER SOFTENER FILTER

Certain models are fitted with a water softener filter (C4). If this is not the case with your model, you are recommended to purchase one from De'Longhi Customer Services.

To use the filter correctly, follow the instructions below.

### 15.1 Installing the filter



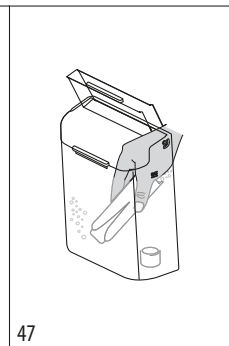
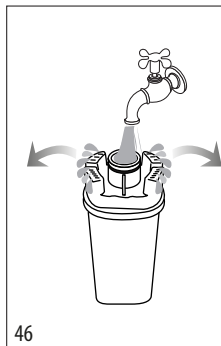
1. Remove the filter (C4) from the packaging.
2. Turn the date indicator disk (see fig. 45) until the next two months of use are displayed.



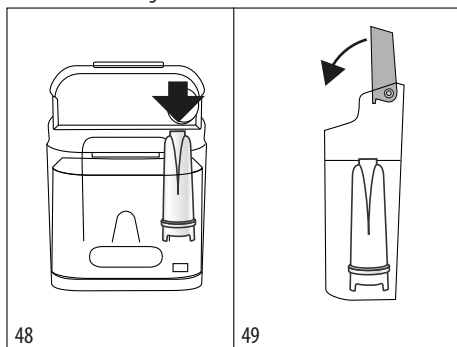
**Please note**

The filter lasts about two months if the appliance is used normally. If the coffee machine is left unused with the filter installed, it will last a maximum of three weeks.

3. To activate the filter, run tap water through the hole in the filter as shown in the figure until water comes out of the openings at the side for more than a minute (fig. 46).
4. Extract the tank (A7) from the appliance and fill with water.



5. Insert the filter in the water tank and immerse it completely for about ten seconds, sloping it and pressing it lightly to enable the air bubbles to escape (fig. 47).
6. Insert the filter in the filter housing (A9) (fig. 48) and press as far as it will go.



7. Close the tank with the lid (A8) (fig. 49), then replace the tank in the machine.

When you install the filter, you must notify the appliance of its presence.

8. Press the **MENU/ESC** button (B3) to enter the menu;
9. Press < (B12) or > (B8) (fig. 9) until "Install filter" appears on the display (B4).
10. Press the  $\Delta$ /OK button (B5).
11. "Install?" is displayed.
12. Press the  $\Delta$ /OK button to confirm the selection. "Water delivery Press OK" is displayed.
13. Position a container under the hot water spout (C6) (min. capacity: 100ml).
14. Press the  $\Delta$ /OK button to confirm the selection. The appliance begins hot water delivery and the message "Please wait" is displayed.
15. After the flow of hot water stops, the appliance automatically resets to "Ready for coffee" status.

After the flow of hot water stops, the appliance automatically resets to "Ready for coffee" status.

## 15.2 Replacing the filter

When the "F" symbol and "REPLACE FILTER" appear on the display (B4), after two months (see date indicator) or when the appliance has not been used for 3 weeks, you should replace the filter (C4):

1. Extract the tank (A7) and exhausted filter.
2. Take the new filter out of its packet and proceed as illustrated in points 2, 3, 4, 5 and 6 in the previous section.
3. Position a container with a minimum capacity of 100ml under the hot water spout (C6).
4. Press the **MENU/ESC** button (B3) to enter the menu.

5. Press < (B12) or > (B8) until "Replace filter?" appears on the display (B4).
  6. Press the  $\Delta$ /OK button (B5).
  7. The message "Confirm?" appears on the display.
  8. Press the  $\Delta$ /OK button to confirm the selection.
  9. "Water delivery Press OK" is displayed.
  10. Press the  $\Delta$ /OK button to confirm the selection. The appliance begins hot water delivery and the message "Please wait" is displayed.
  11. After the flow of hot water stops, the appliance automatically resets to "Ready for coffee" status.
- The new filter is now active and you can use the coffee machine.

## 15.3 Removing the filter

If you want to use the appliance without the filter (C4), you must remove it and notify the appliance of its removal.

Proceed as follows:

1. Extract the tank (A7) and exhausted filter;
2. Press the **MENU/ESC** button (B3) to enter the menu;
3. Press < (B12) or > (B8) (fig. 9) until "Install filter, Installed" appears on the display (B4);
4. Press the  $\Delta$ /OK button (B5);
5. "Uninstall?" appears on the display;
6. Press the  $\Delta$ /OK button to confirm and the **MENU/ESC** button to exit the menu.

## 16. TECHNICAL DATA

Voltage:	220-240 V ~ 50/60 Hz max. 10A
Absorbed power:	1450W
Pressure:	1,5 MPa (15 bar)
Max. water tank capacity:	1,4 l
Size LxDxH:	195x410x330 mm
Cord length:	1750 mm
Weight:	10,4 kg (MB) - 11 kg (M)
Max. beans container capacity:	150 g



The appliance complies with the following EC directives:


- European Standby Regulation 1275/2008
- Materials and accessories coming into contact with food conform to EEC regulation 1935/2004.

## 17. DISPOSAL



The appliance must not be disposed of with household waste, but taken to an authorised waste separation and recycling centre.

## 18. DISPLAYED MESSAGES

DISPLAYED MESSAGE	POSSIBLE CAUSE	SOLUTION
FILL TANK	Insufficient water in the tank (A7).	Fill the tank with water and/or insert it correctly, pushing it as far as it will go until it clicks into place.
EMPTY GROUNDS CONTAINER	The grounds container (A18) is full.	Empty the grounds container and drip tray (A16), clean and replace (fig. 28). Important: when removing the drip tray, the grounds container must be emptied, even if it contains few grounds. If this is not done, when you make the next coffees, the grounds container may fill up more than expected and clog the machine.
GROUND TOO FINE ADJUST MILL	The grinding is too fine and the coffee is delivered too slowly or not at all.	Repeat coffee delivery and turn the grinding adjustment dial (A6) (fig. 13) one click clockwise towards 7 while the coffee mill is in operation. If after making at least 2 coffees delivery is still too slow, repeat the correction procedure, turning the grinding adjustment dial another click until delivery is correct (see section: "9.4 Adjusting the coffee mill").
	If the water softener filter (C4) is present, an air bubble may have been released inside the circuit, obstructing delivery.	Insert the hot water spout (C6) in the appliance and deliver a little water until the flow becomes regular.
INSERT GROUNDS CONTAINER	After cleaning, the grounds container (A18) has not been replaced.	Remove the drip tray (A16) and insert the grounds container.
ADD PRE-GROUND COFFEE	The pre-ground coffee function has been selected without placing any pre-ground coffee in the funnel (A4).	Place pre-ground coffee in the funnel or deselect the "pre-ground" function (fig. 18).
DESCALE	The machine must be descaled.	The descaling procedure described in section "13. Descaling" needs to be performed as soon as possible.
REDUCE COFFEE AMOUNT	Too much coffee has been used.	Select a milder taste by pressing the  button (B1) (fig. 10) or reduce the quantity of pre-ground coffee.
FILL BEANS CONTAINER	The coffee beans have run out.	Fill the beans container (A2) (fig. 14).
	The pre-ground coffee funnel (A4) is clogged.	Empty the funnel (A4) with the help of the brush (C5) as described in section "12.8 Cleaning the pre-ground coffee funnel".
INSERT INFUSER ASSEMBLY	The infuser (A19) has not been replaced after cleaning.	Insert the infuser as described in section "12.9 Cleaning the infuser".
GENERAL ALARM	The inside of the appliance is very dirty.	Clean the inside of the appliance thoroughly, as described in the section "12. Cleaning". If the message is still displayed after cleaning, contact a service centre.

EMPTY CIRCUIT FILL CIRCUIT Water delivery PRESS OK	The water circuit is empty.	Press <b>OK</b> (B5) to deliver water from the spout (C6) until it flows out normally. If the problem persists, make sure the water tank (A7) is fully inserted.
REPLACE FILTER	The water softener filter (C4) is exhausted.	Replace the filter or remove it as described in section "15. Water softener filter".
SET DIAL TO CLEAN	Milk has been delivered recently and the tubes inside the milk container must be cleaned (D).	Turn the froth adjustment dial (D1) to the CLEAN position.
INSERT WATER SPOUT	The hot water spout (C6) is not inserted or is inserted incorrectly.	Insert water spout as far as it will go.
INSERT MILK CONTAINER	The milk container (D) is not inserted correctly.	Insert the milk container (fig. 23) as far as it will go.
DESCALE	Descaling must be performed.	See section "13. Descaling".

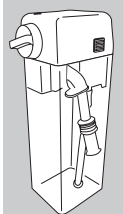
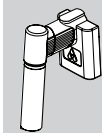

## 19. TROUBLESHOOTING

Below is a list of some of the possible malfunctions.

If the problem cannot be resolved as described, contact Customer Services.

PROBLEM	POSSIBLE CAUSE	SOLUTION
The coffee is not hot.	The cups were not preheated.	<ul style="list-style-type: none"> <li>Enable the cup warmer shelf (A10) and leave the cups at least 20 minutes to warm up.</li> <li>Warm the cups by rinsing them with hot water (Please note: you can use the hot water function).</li> </ul>
	The internal circuits have cooled down because 2/3 minutes have elapsed since the last coffee was made.	Before making the coffee, heat the infuser by rinsing using the "rinse" function (see section "8.1 Rinsing").
	A low coffee temperature is set.	Set a hotter coffee temperature (see section "8.10 Setting the temperature").
The coffee is weak or not creamy enough.	The coffee is ground too coarsely.	Turn the grinding adjustment dial (A6) one click anticlockwise towards 1 while the coffee mill is in operation (fig. 13). Continue one click at a time until coffee delivery is satisfactory. The effect is only visible after delivering 2 coffees (see section "9.4. Adjusting the coffee mill").
	The coffee is unsuitable.	Use pre-ground coffee for espresso machines.
The coffee is delivered too slowly or a drop at a time.	The coffee is ground too finely.	Turn the grinding adjustment dial (A6) one click anticlockwise towards 7 while the coffee mill is in operation (fig. 13). Continue one click at a time until coffee delivery is satisfactory. The effect is only visible after delivering 2 coffees (see section "9.4. Adjusting the coffee mill").



Coffee does not come out of one or both of the spouts.	The coffee spouts (A11) are blocked.	Clean the spouts with a toothpick (fig. 33).
Milk is not delivered from the milk spout	The milk container lid (D2) is dirty	Clean the milk container lid as described in section "12.10 Cleaning the milk container".
 <p>The milk contains large bubbles and squirts out of the milk spout (D5) or there is little froth</p>	The milk is not cold enough or is not semi-skimmed.	Use skimmed or semi-skimmed milk at refrigerator temperature (about 5° C). If the result is not as you wished, try changing brand of milk.
	The froth adjustment dial (D1) is incorrectly adjusted.	Adjust according to the instructions in section "10.2 Adjusting the amount of froth".
	The milk container lid (D2) or froth adjustment dial (D1) on the milk container (D) is dirty.	Clean the milk container lid and dial as described in section "12.10 Cleaning the milk container".
	The hot water/steam connection nozzle (A12) is dirty.	Clean the connection nozzle as described in section "12.11 Cleaning the hot water/steam connection nozzle".
 <p>The milk contains large bubbles and squirts out of the milk spout or there is little froth</p>	The hot water/steam spout (C6) is dirty.	Clean as described in section "11.5 Cleaning the spout after use".
The appliance does not come on	The power cord (C8) connector is not inserted correctly.	Insert the connector as far as it will go in the socket (A13) at the back of the appliance (fig. 1).
	It is not plugged into the mains socket.	Plug into the mains socket (fig. 1).
	The main switch (A20) is not turned on.	Press the main switch (fig. 2).
The infuser cannot be extracted	The appliance has not been turned off correctly	Turn the appliance off by pressing the  button (A23) (section "7. Turning the appliance off").

## 20. ELECTRICAL REQUIREMENTS (UK ONLY)

Before using this appliance ensure that the voltage indicated on the product corresponds with the main voltage in your home, if you are in any doubt about your supply contact your local electricity company.

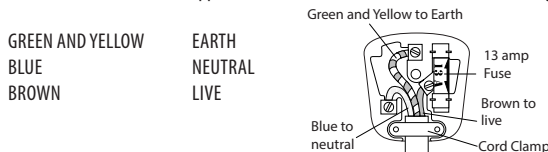
The flexible mains lead is supplied connected to a B.S. 1363 fused plug having a fuse of 13 amp capacity.

Should this plug not fit the socket outlets in your home, it should be cut off and replaced with a suitable plug, following the procedure outlined below.


**Note:** Such a plug cannot be used for any other appliance and should therefore be properly disposed of and not left where children might find it and plug it into a supply socket - with the obvious consequent danger.

**N.B.** We recommend the use of good quality plugs and wall sockets that can be switched off when the machine is not in use.

**IMPORTANT:** the wires in the mains lead fitted to this appliance are coloured in accordance with the following code:



As the colours of the wires in the mains lead of this appliance may not correspond with the coloured markings identifying the terminals in your plug, proceed as follows:

- The wire which is coloured green and yellow must be connected to the terminal in the plug which is marked with the letter E or by the earth symbol  or coloured green or green and yellow.
- The wire which is coloured blue must be connected to the terminal which is marked with the letter N or coloured black.
- The wire which is coloured brown must be connected to the terminal which is marked with the letter L or coloured red.

When wiring the plug, ensure that all strands of wire are securely retained in each terminal. Do not forget to tighten the mains lead clamp on the plug. If your electricity supply point has only two pin socket outlets, or if you are in doubt, consult a qualified electrician.

Should the mains lead ever require replacement, it is essential that this operation be carried out by a qualified electrician and should only be replaced with a flexible cord of the same size.

After replacement of a fuse in the plug, the fuse cover must be refitted. If the fuse cover is lost, the plug must not be used until a replacement cover is obtained. The colour of the correct replacement fuse cover is that of the coloured insert in the base of the fuse recess or elsewhere on the plug. Always state this colour when ordering a replacement fuse cover.

Only 13amp replacement fuses which are asta approved to B.S. 1362 should be fitted.

This appliance conforms to the Norms EN 55014 regarding the suppression of radio interference.

**Warning - this appliance must be earthed**